

O.D.O.T. DISTRICT 2 SURVEY OFFICE (USE ONLY)

PERSONNEL

REFERENCE NO. 13 B

SHEET 2 OF 47

NOTES SIMON DATE 4/23/93

ROUTE US 24

H.C. LOEHRKE WEATHER SUNNY

COUNTY HENRY

R.C. CORDES TEMP. 65°

TOWNSHIP LIBERTY

DWG BY NIESE PID _____

SECTION 2

T 5 N R 7 E

TYPE MONUMENT 1" IPIN

~~ON SURFACE~~ - BELOW 1"

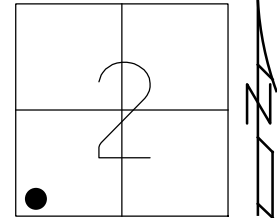
OFFSET C PAVEMENT _____ LT : RT

_____ TO _____ EDGE PAVEMENT

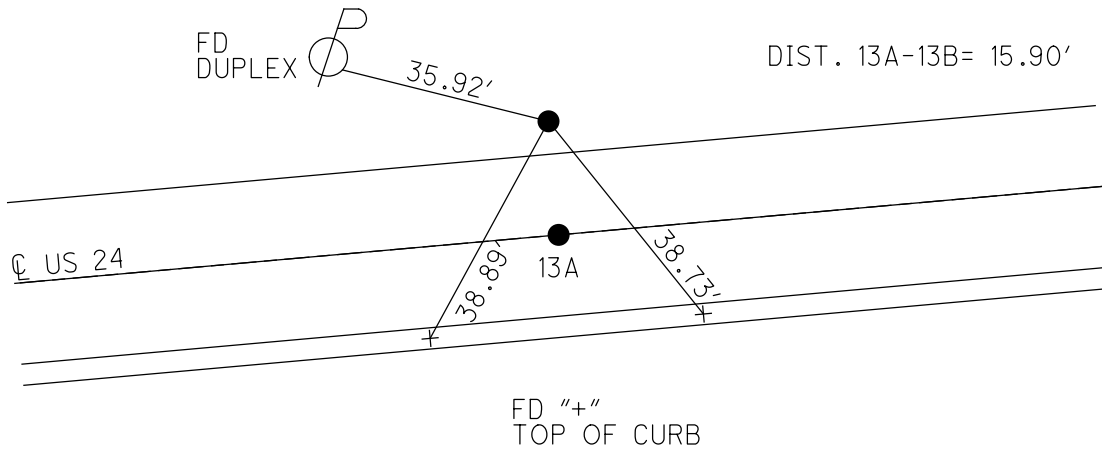
STATION: 589+75

HORZ. DATUM: _____ GEOID: _____

GRID: NORTHING: _____ EASTING: _____



RECORD:
FD 1" IPIN
1" DOWN
4/23/93, CL
SET P.K./WASHER
7/13/93, MB



O.D.O.T. DISTRICT 2 SURVEY OFFICE

PERSONNEL

REFERENCE NO. 13A

SHEET 1 OF 40

NOTES Simon

H.C. Loehrke

DATE 4-23-93

ROUTE U.S. 24

R.C. CordeS

WEATHER Sunny

COUNTY Henry

TEMP. +65

TOWNSHIP Liberty

SECTION 2

T 5 N R 7 E

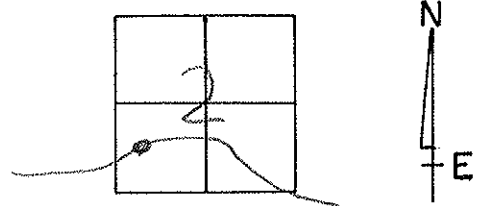
TYPE MONUMENT Small R-R spike

ON SURFACE - ~~BELOW~~ yes

~~LEFT - & PAV'T. - RIGHT~~ yes

D.O TO Left EDGE PAVEMENT

S.L.M. 589475 11.17

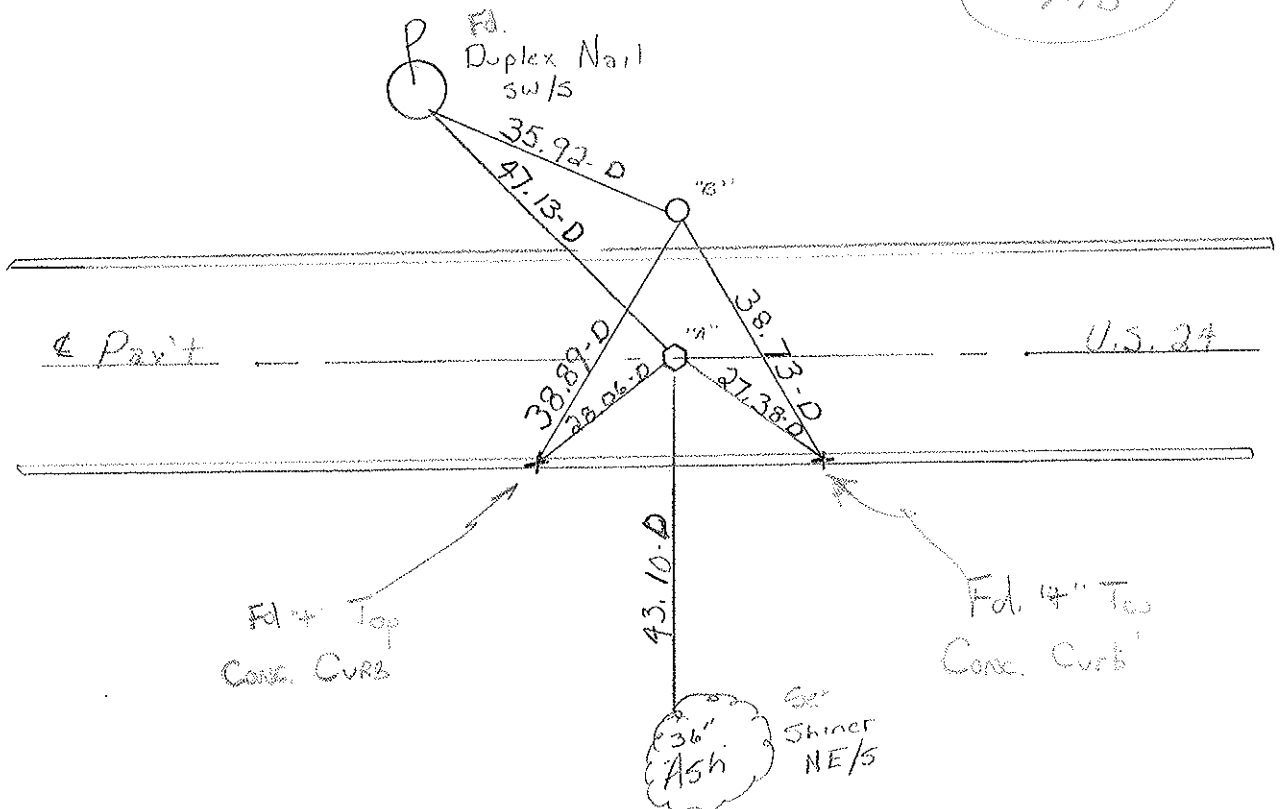


Pt A Small R.R. Spike

Distance Between A+B 15.90-D

Pt B 1" iron rod 1" below surface

RESET PK4 WASHER
 7-13-93
 YTB



P.I. Sta. 796+54.97 Rec.

Resurfaced 1993

O.D.O.T. DISTRICT 2 SURVEY OFFICE

SHEET 1 OF

County HENRY S.R.-US 24

Date 6-1-81

Township LIBERTY

Weather CLEAR

Section 2

Temp. +80°

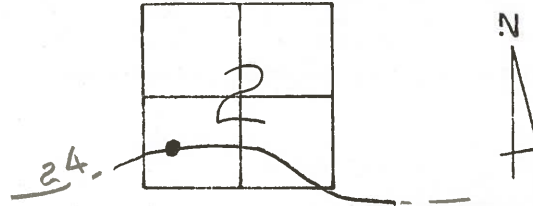
T5N, R7E

Personnel HOFFMAN

13A

LOFFRKE

House holder



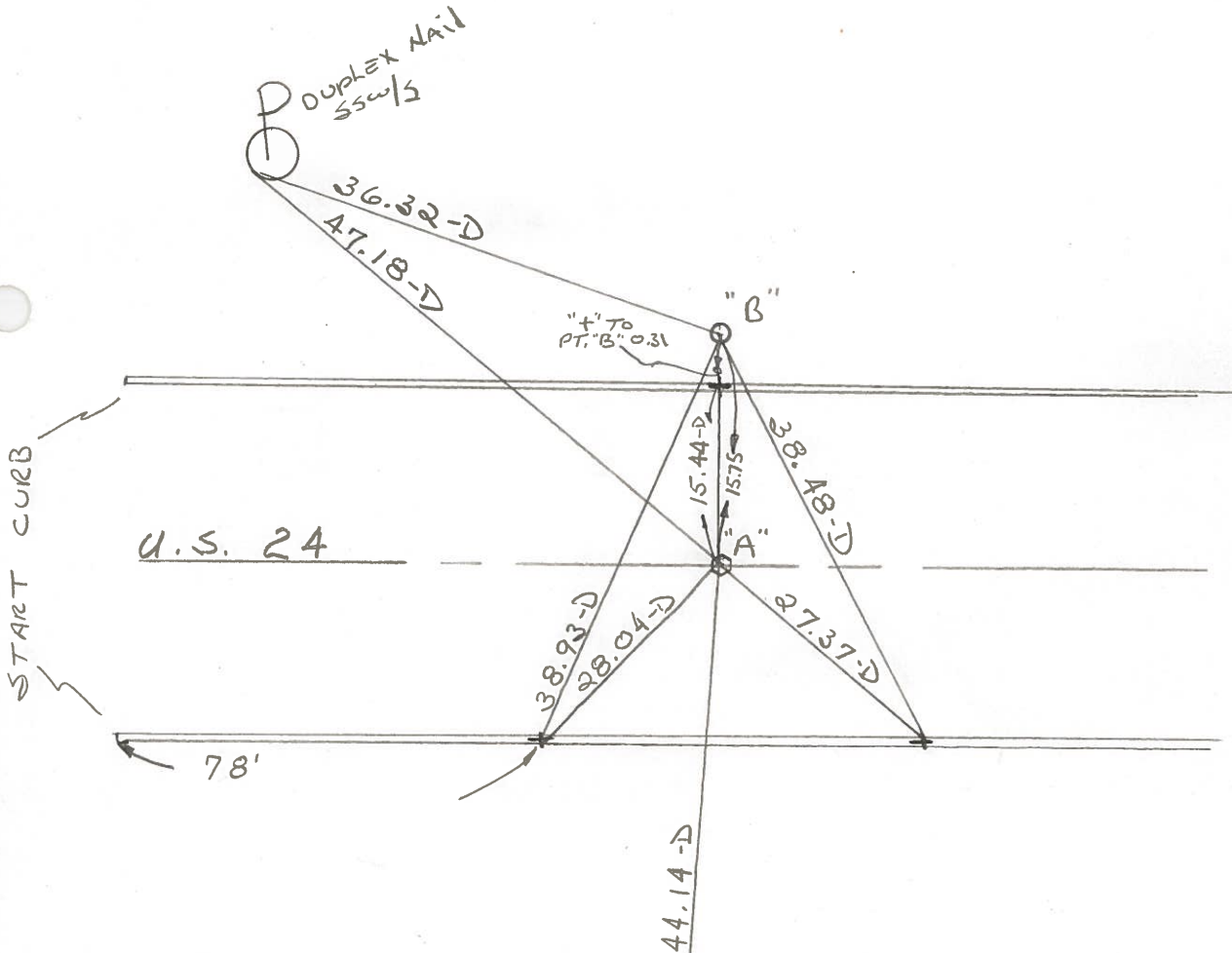
PT. "A" Fd. BOAT SPK. @ SURFACE

PROJECT STA. ± 786+68

PT. "B" Fd. 1" IRON PIPE @ SURFACE

SET SMALL R.R. SPK.

9-2-81
SWH



BERKEN

- SAND PIT &
- BLACKTOP
- PLANT.

ALSO:
59.81-D
TO PT. B

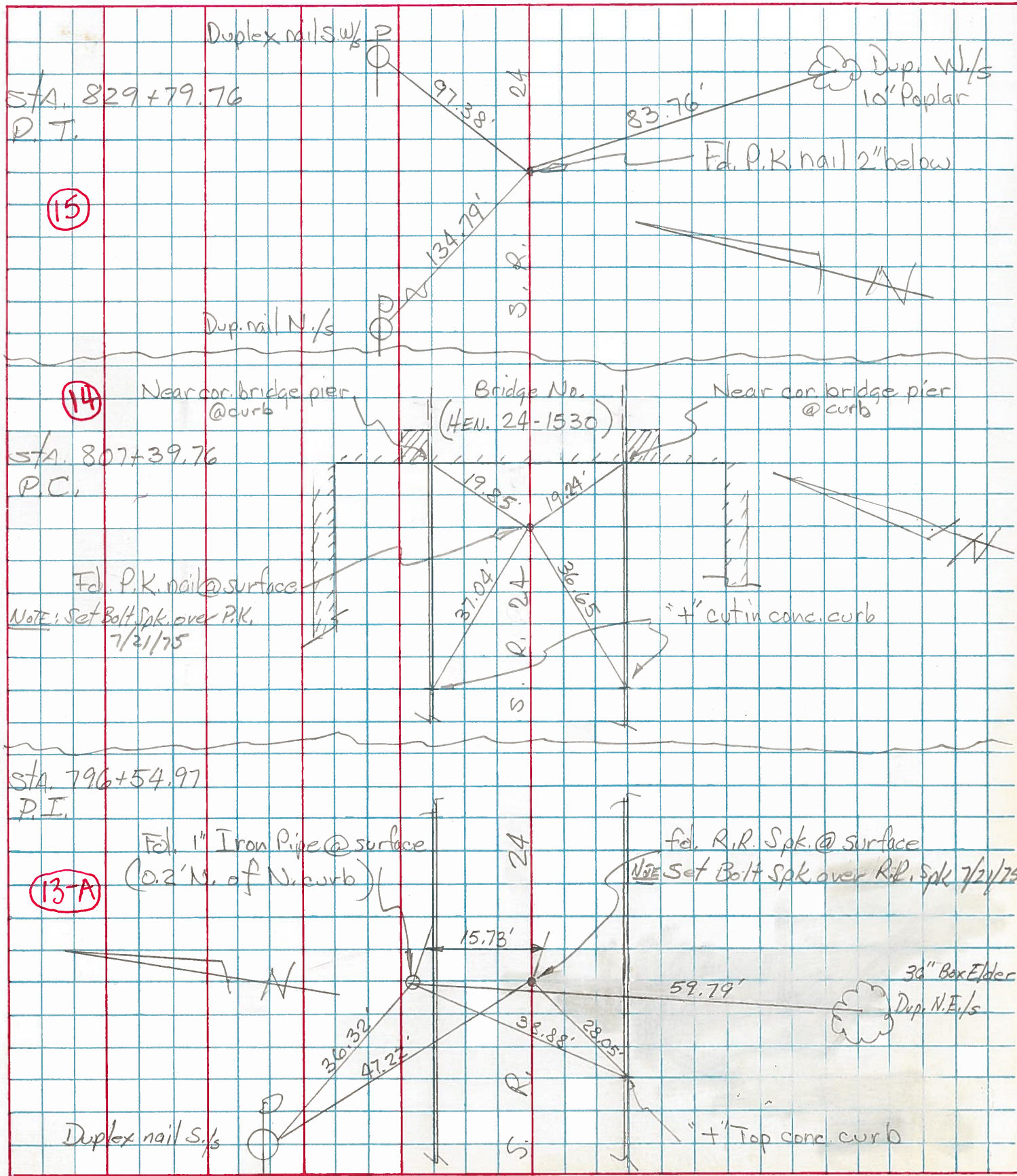
SHINER
N.E. SIDE
36" BOXELDER

P.I. STA 796+54.97 REC.

PERSONNEL	TITLE	PERSONNEL	TITLE
Tomsic			
Neuser			
Granata			

COUNTY HEN. DATE JUNE 18, 1975
 S. R. 24 WEATHER _____
 SEC. LIBERTY TWP. TEMP. _____

DESCRIPTION WEST OF S.R. 109 JOB NO. _____



PERSONNEL TITLE PERSONNEL TITLE

Beach
 Puffer
 Krape
 Delventhal

COUNTY Henry DATE Apr. 59

S. R. US-24 WEATHER _____

SEC. 11.22 TEMP. _____

DESCRIPTION £ constr. LEFT CENTER LINE RIGHT JOB NO. _____

CURVE # 9

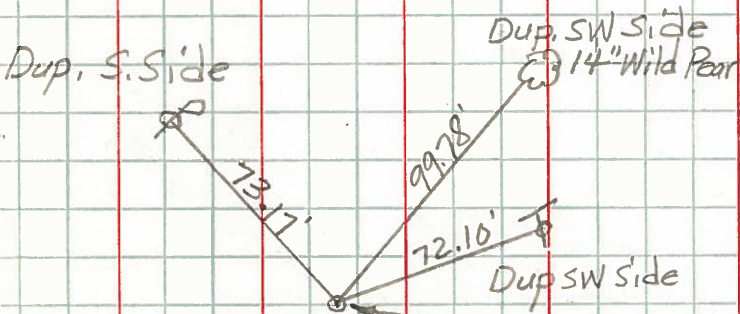
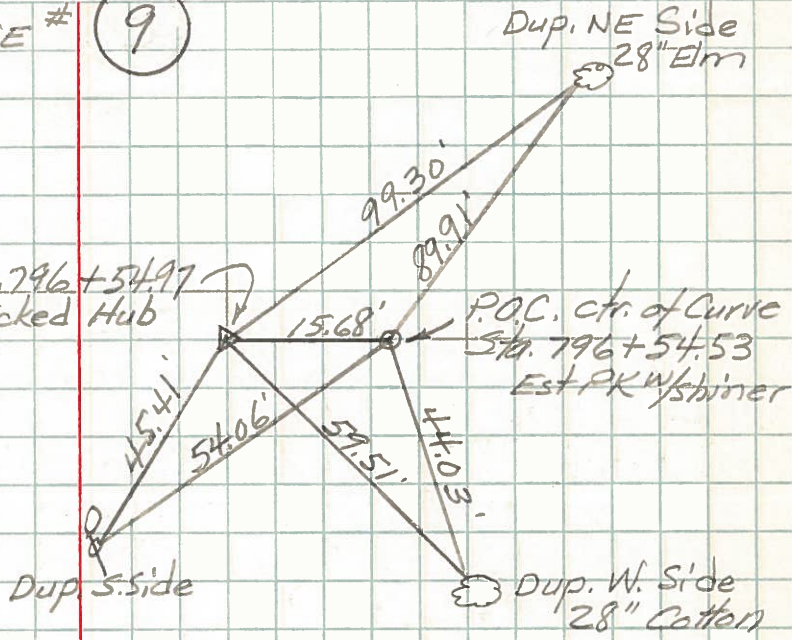
P.I. Sta. 796+54.97

$\Delta - 4^{\circ}53\frac{1}{2}$ Rt.
 D - $0^{\circ}20'$
 T - 734.19'
 L - 1467.50'
 E - 15.68'
 R - 17188.64

P.C. Sta. 789+20.78
 P.T. Sta. 803+88.28

P.I. Sta. 796+54.97
 Est. Tacked Hub

P.O.C. ctr. of Curve
 Sta. 796+54.53
 Est. P.K. w/shiner



P.C. Sta. 789+20.78
 Est. P.K. w/shiner

