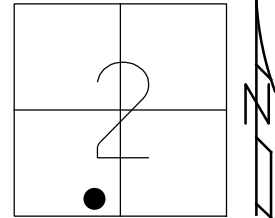


O.D.O.T. DISTRICT 2 SURVEY OFFICE (USE ONLY)

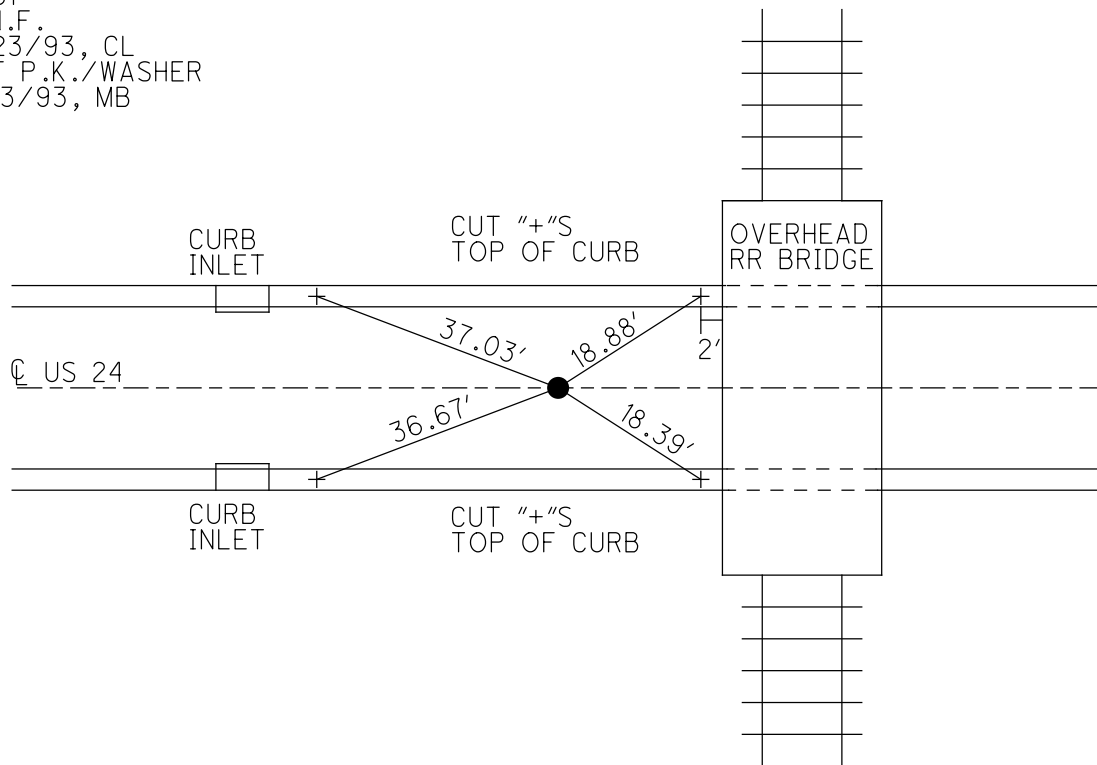
PERSONNEL \_\_\_\_\_ REFERENCE NO. 14 SHEET 3 OF 47  
 NOTES BARNHISEL DATE 7/13/93 ROUTE US 24  
 H.C. \_\_\_\_\_ WEATHER FAIR COUNTY HENRY  
 R.C. \_\_\_\_\_ TEMP. 73° TOWNSHIP LIBERTY  
 DWG BY NIESE PID \_\_\_\_\_ SECTION 2  
 T 5 N R 7 E

TYPE MONUMENT P.K./WASHER  
 ON SURFACE - ~~BELOW~~ ON \_\_\_\_\_  
 OFFSET  $\odot$  PAVEMENT ON \_\_\_\_\_ LT : RT  
13.8' TO RT EDGE PAVEMENT  
 STATION: 600+59



HORZ.DATUM: \_\_\_\_\_ GEOID: \_\_\_\_\_  
 GRID: NORTHING: \_\_\_\_\_ EASTING: \_\_\_\_\_

RECORD: P.C.  
 STA 807+39.76  
 D.N.F.  
 SET SM.R.R.SPIKE  
 6/81  
 D.N.F.  
 4/23/93, CL  
 SET P.K./WASHER  
 7/13/93, MB



# O.D.O.T. DISTRICT 2 SURVEY OFFICE

PERSONNEL \_\_\_\_\_

REFERENCE NO. 14

SHEET 2 OF 40

NOTES Simon

H.C. Loehrke

R.C. Cordes

DATE 4-23-93

WEATHER Sunny

TEMP. ± 65

ROUTE U.S. 24

COUNTY Henry

TOWNSHIP Liberty

SECTION 2

T. 5 N R. 7 E

#14

TYPE MONUMENT None Located

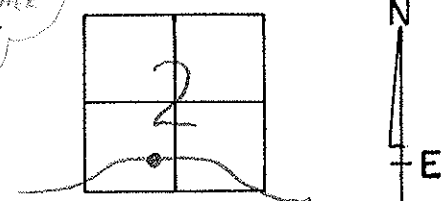
ON SURFACE - BELOW \_\_\_\_\_

LEFT- & PAV'T. - RIGHT yes

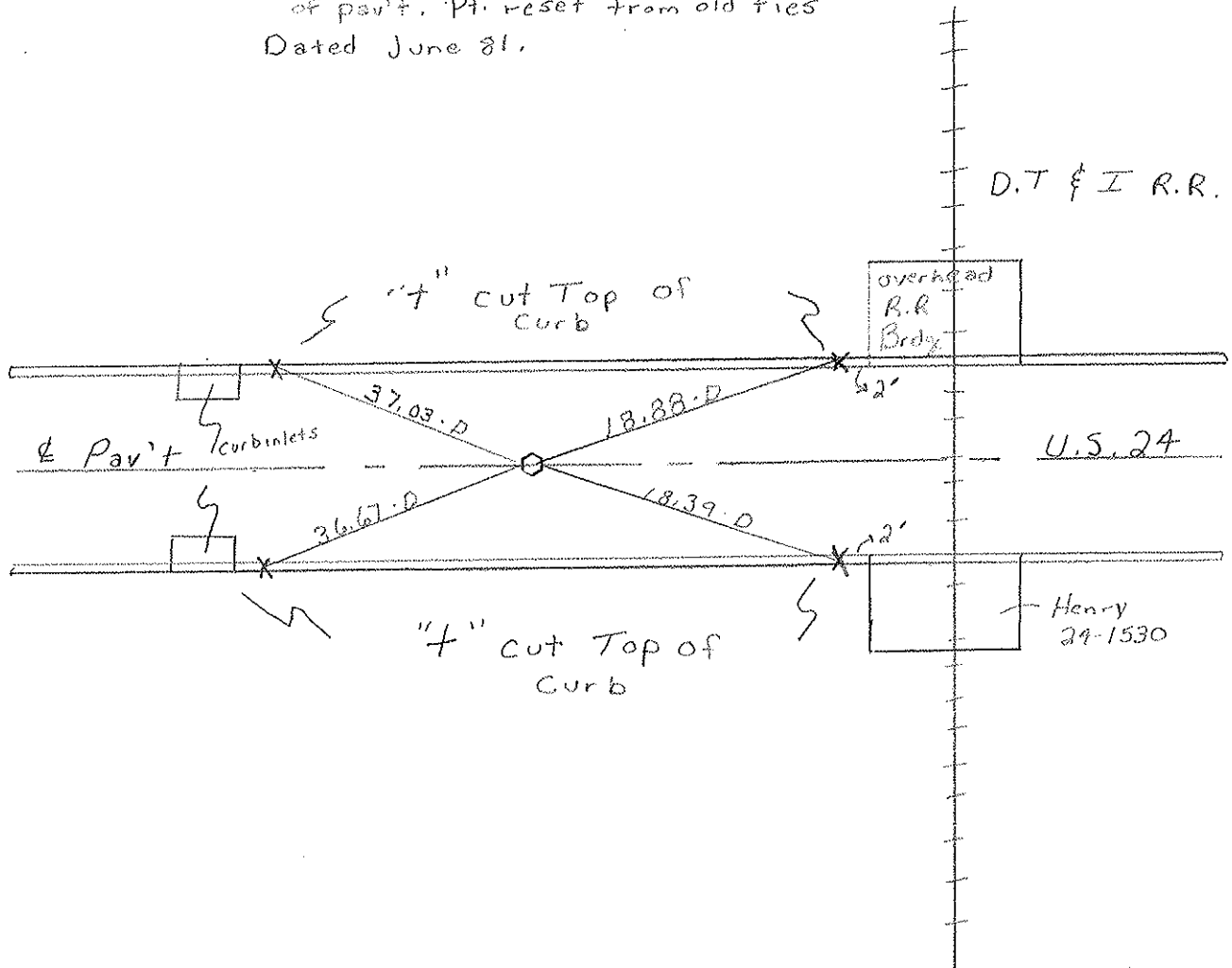
13.8 TO FT. EDGE PAVEMENT CURB

S.L.M. 600 + 59 13.37

SET PK + W/STAKE  
 7-13-93  
 MB



Note: Previous monuments not located  
 Believe removed during earlier grinding  
 of pav't. Pt. reset from old ties  
 Dated June 81.



P.C. Sta. 807 + 39.76 Rec

County HENRY S.R.-U.S. 24

Date 6-1-81

Township LIBERTY

Weather CLEAR

Section 2

Temp. +80°

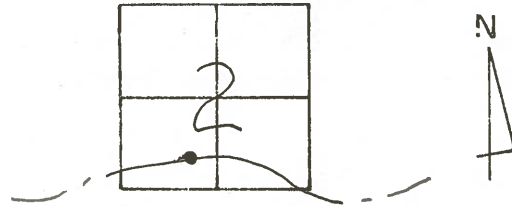
T5N, R7E

Personnel Hoffman

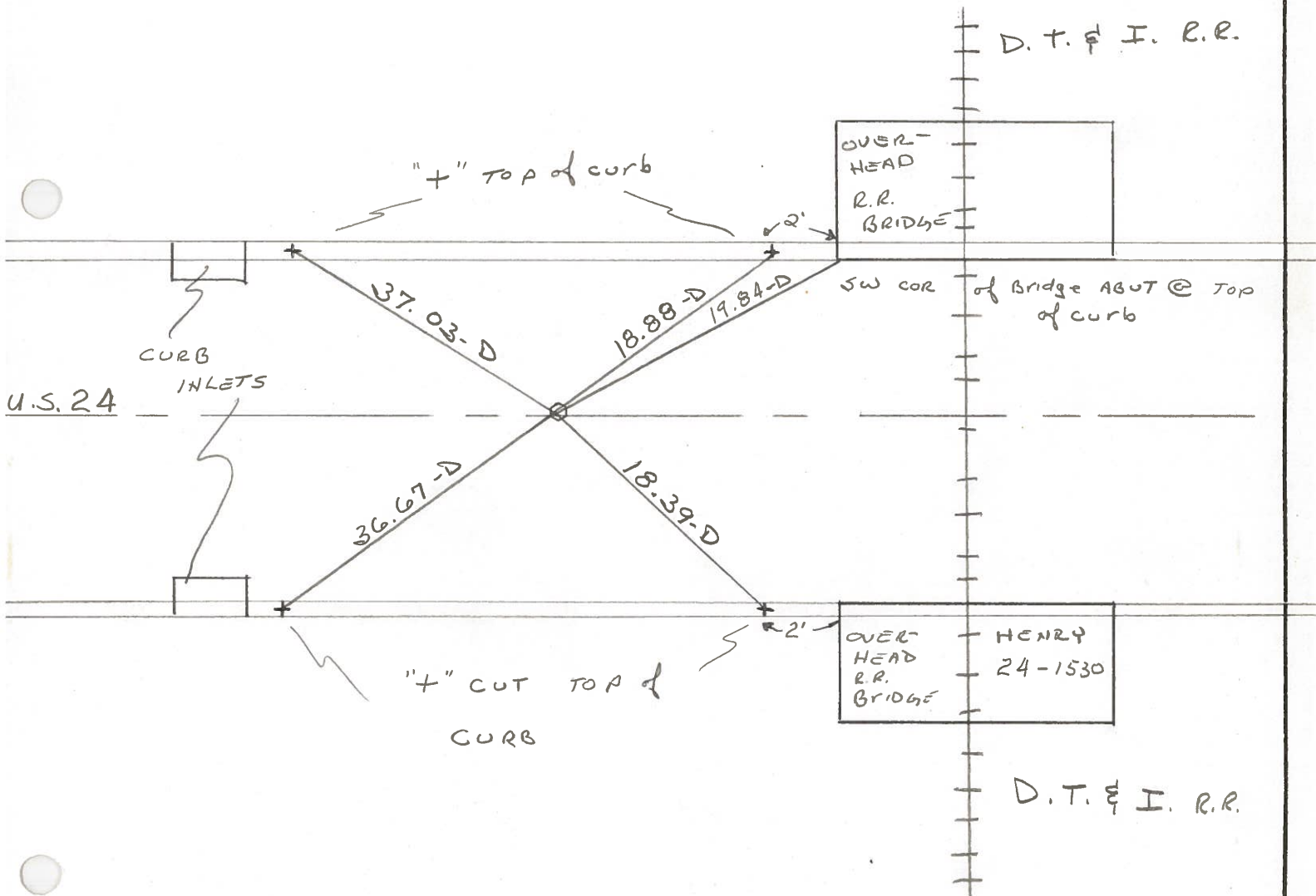
Loehrke

Householder

# 14



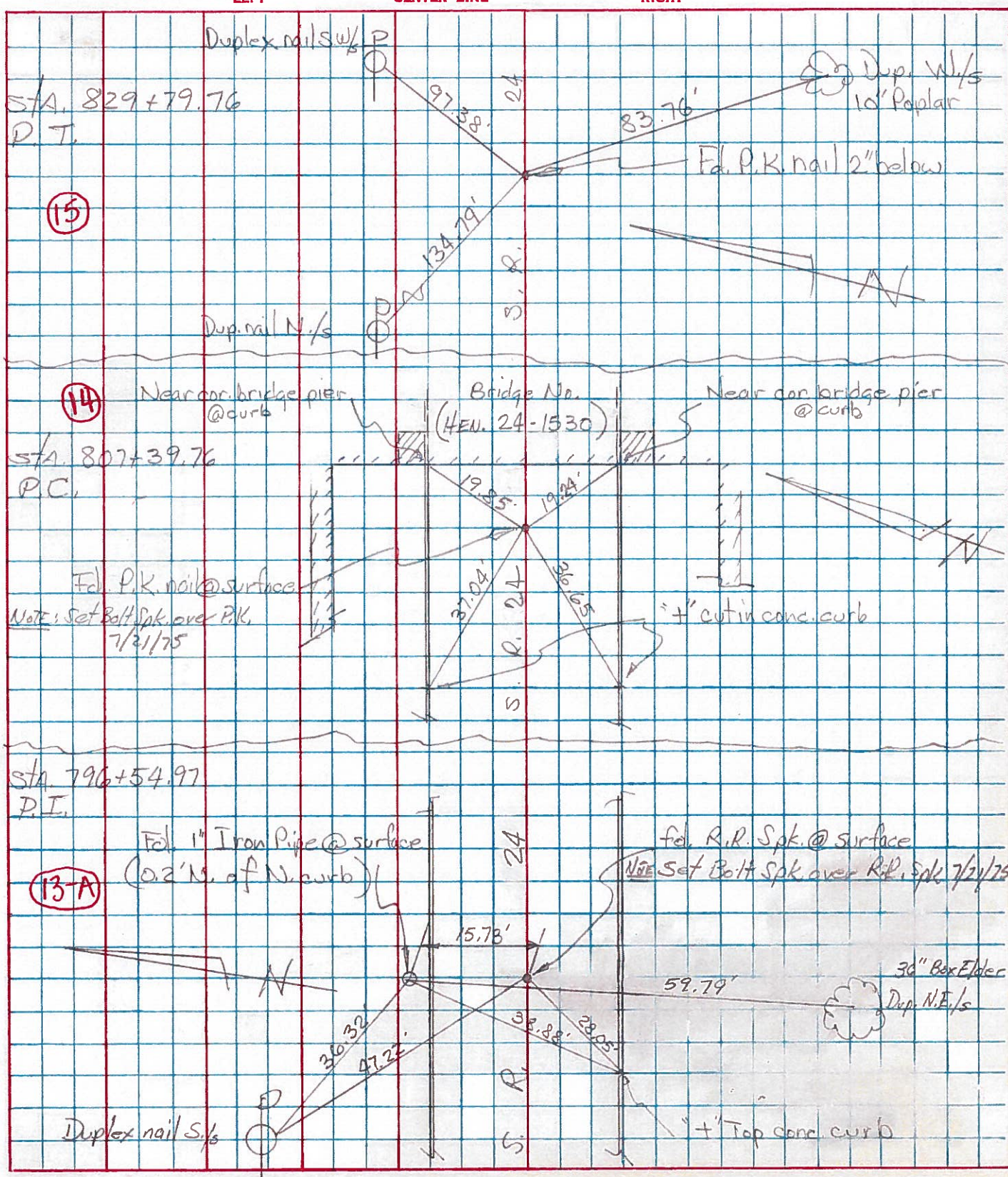
Fd. BOAT SPK @ SURFACE - PROJECT STA ± 796+50  
 @ CTR. of PAUT.  
 SET SMALL R.R. SPK. 9-2-81  
 SWH



P.C. STA 807+39.76 Rec.

PERSONNEL	TITLE	PERSONNEL	TITLE	COUNTY	DATE
Tomsic				HEN.	JUNE 18, 1975
Neuser				S. R. 24	WEATHER
Granata				SEC. LIBERTY TWP.	TEMP.

DESCRIPTION WEST OF S.R. 109 LEFT CENTER LINE RIGHT JOB NO.



PERSONNEL	TITLE	PERSONNEL	TITLE	COUNTY	DATE
Beach				Henry	Apr. 59
Rutter				US-24	
Knape				11.22	
Delventhal					

DESCRIPTION Const. LEFT CENTER LINE RIGHT JOB NO. \_\_\_\_\_

