

O.D.O.T. DISTRICT 2 SURVEY OFFICE (USE ONLY)

PERSONNEL _____

REFERENCE NO. 18

SHEET 7 OF 47

NOTES SIMON

DATE 4/23/93

ROUTE US 24

H.C. LOEHRKE

WEATHER SUNNY

COUNTY HENRY

R.C. CORDES

TEMP. 65°

TOWNSHIP LIBERTY

SECTION 12

DWG BY NIESE PID _____

T 5 N R 7 E

TYPE MONUMENT SM.R.R.SPIKE

~~ON SURFACE~~ - BELOW ON

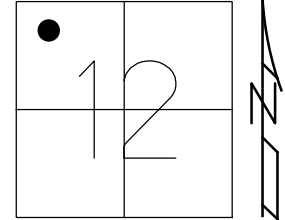
OFFSET 0.8' C PAVEMENT 11.5' ~~±~~ : RT

0.8' TO RT EDGE PAVEMENT

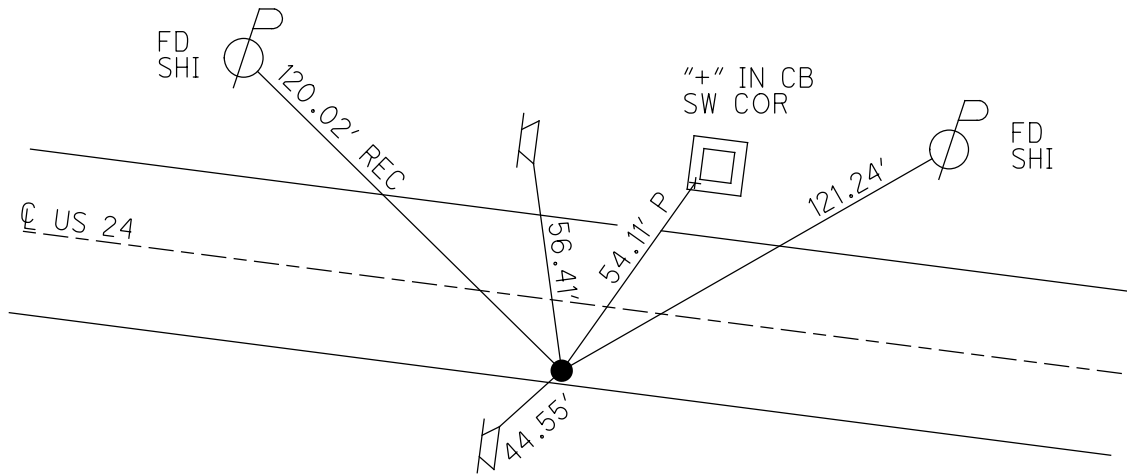
STATION: 658+69

HORZ.DATUM: _____ GEOID: _____

GRID: NORTHING: _____ EASTING: _____



RECORD: P.I.
 STA 865+41.20
 FD SM.R.R.SPIKE
 4/23/93, CL
 SET P.K./WASHER
 7/13/93, CL



SET NOTCH
 "DO NOT PASS"
 SIGN POSTS

O.D.O.T. DISTRICT 2 SURVEY OFFICE

PERSONNEL

REFERENCE NO. 18

SHEET 6 OF 40

NOTES Simon

H.C. Loehrke

R.C. Cordes

DATE 4-23-93

WEATHER Sunny

TEMP. 65°

ROUTE U.S. 24

COUNTY Henry

TOWNSHIP Liberty

SECTION 12 - Fractional

T. 5 N. R. 7 E.

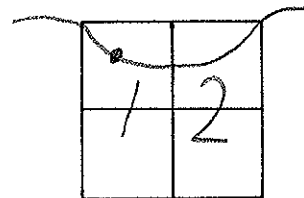
TYPE MONUMENT Small R.R. Spike

ON SURFACE - BELOW yes

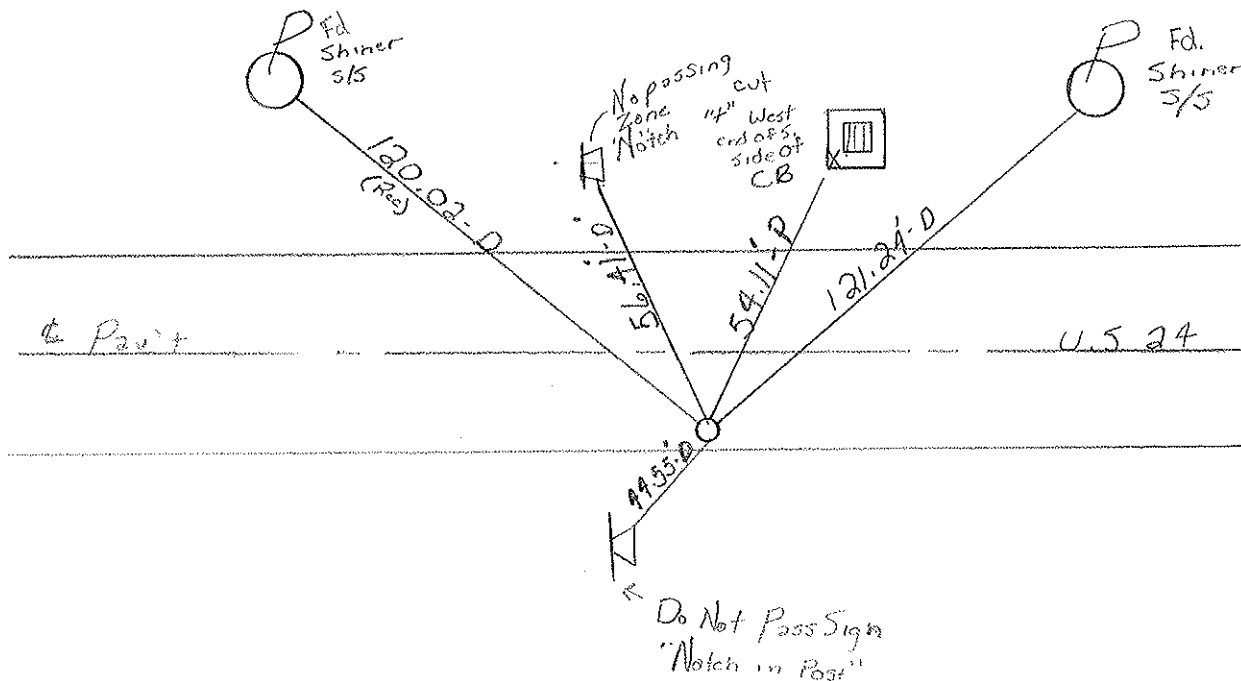
~~LEFT~~ - ~~PAV'T.~~ - RIGHT 11.5

8' TO Right EDGE PAVEMENT

S.L.M. 658469 12.48



RESET PK & WASHER
 7-13-93
 MIB



P.I. STA. 865+41.20 Rec.

County HENRY S.R.-U.S.24

Township LIBERTY

Section 12 - FRACTIONAL

T5N, R7E

Personnel HOFFMAN

LOEHRKE

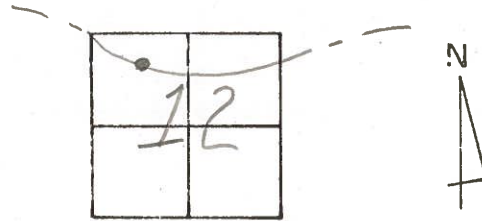
HOUSEHOLDER

18

Date 6-2-81

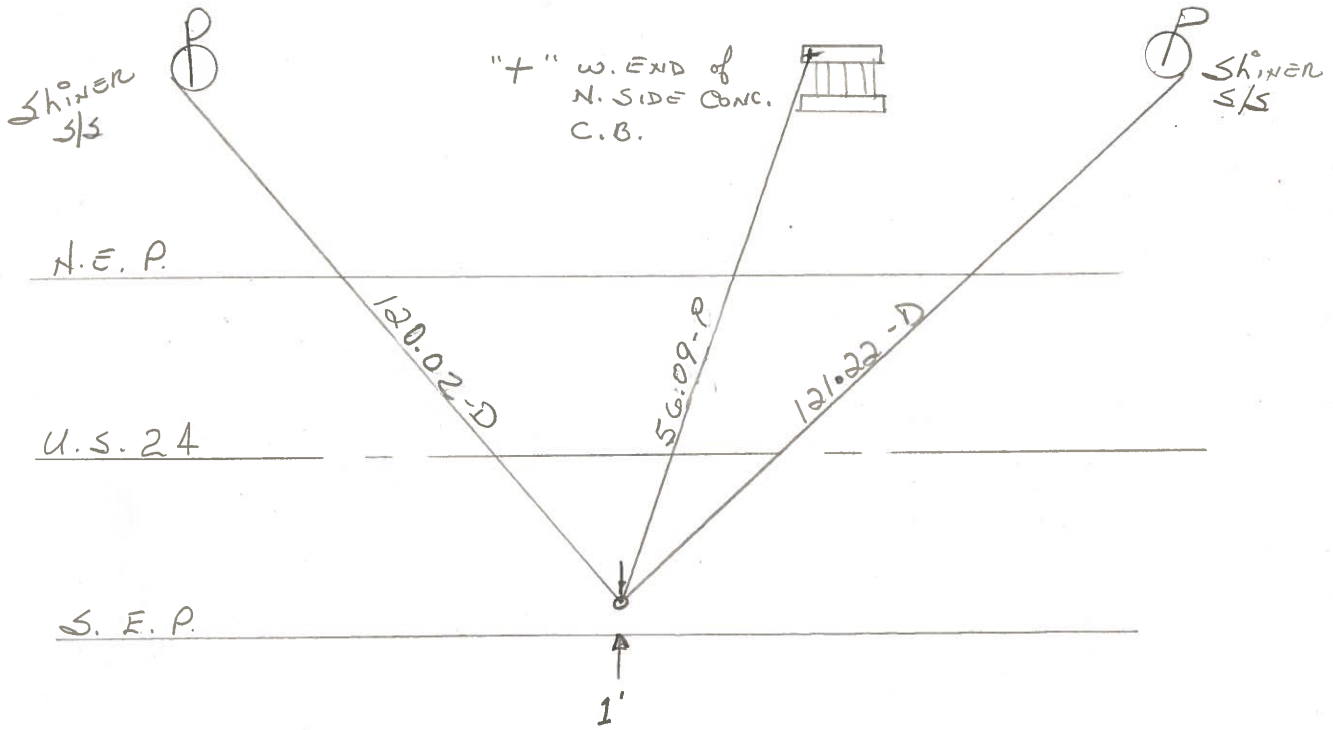
Weather OVERCAST

Temp. +65°



Fd. P.K. 2" Below surface
3.6 N. OF E.P.
11.5 S. OF $\frac{1}{2}$ PAUT.

PROJECT STA. ± 855+55
SET SMALL RR. SPK. 9-21-81
SWH



P.I. STA 865+41.00 REC.

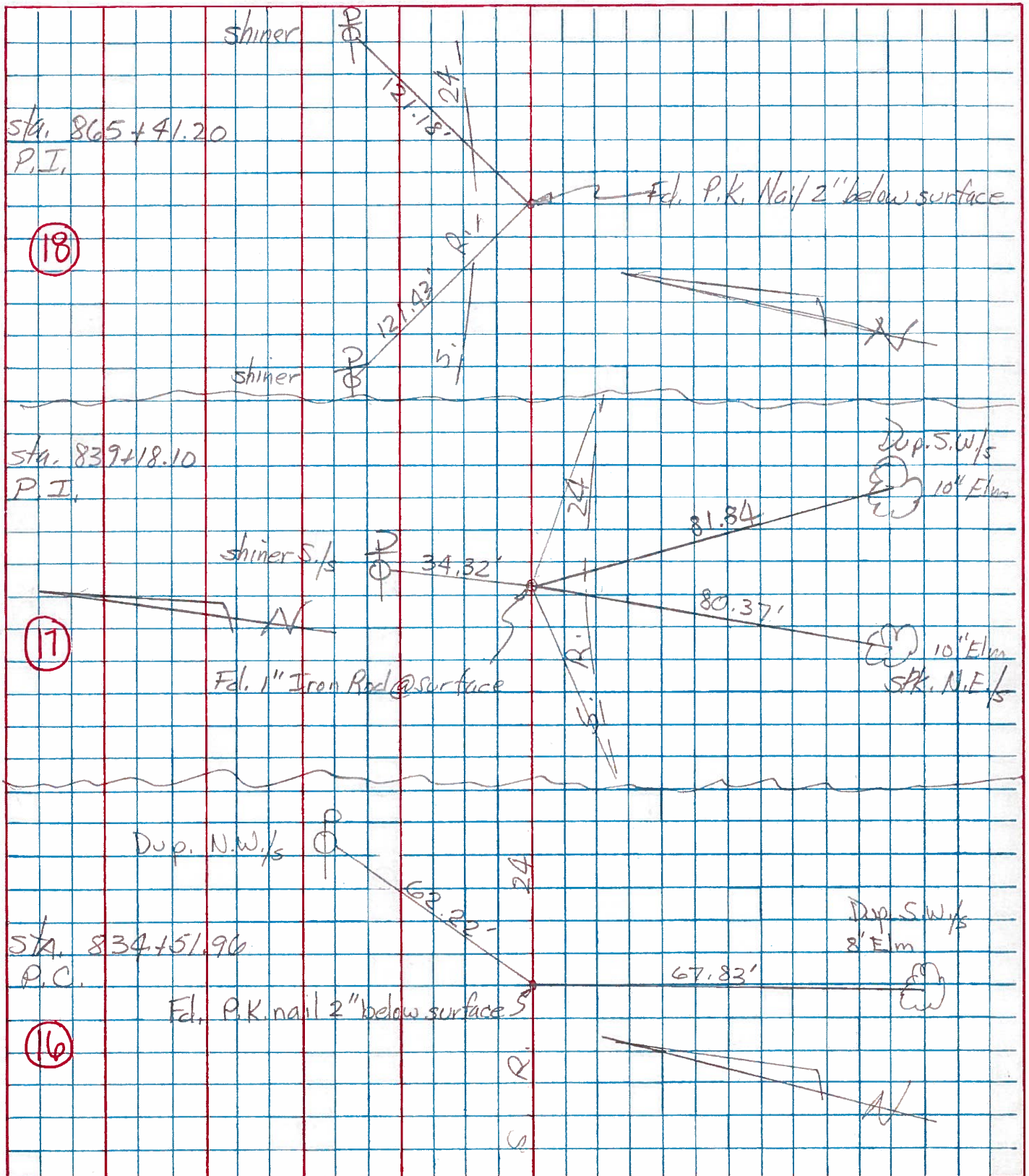
PERSONNEL	TITLE	PERSONNEL	TITLE
Tomsic			
Neuser			
Granata			

COUNTY HEN. DATE JUNE 18, 1975

S. R. 24 WEATHER _____

SEC. LIBERTY TWP. TEMP. _____

DESCRIPTION WEST OF S.R. 109 JOB NO. _____



(18)

(17)

(16)

PERSONNEL TITLE PERSONNEL TITLE

Beach
Ruffer
Knappe
Delventhal

COUNTY Henry

DATE Apr 59

S. R. US-24

WEATHER

SEC 11.22

TEMP.

DESCRIPTION

Const.

JOB NO.

LEFT

CENTER LINE

RIGHT

CURVE #

12

P.I. Sta. 865 + 41.20

Δ - 4° 52' Lt.
D - 0° 30'
T - 486.90'
L - 973.33'
E - 10.31'
R - 11459.15

P.C. Sta 860 + 54.30

P.T. Sta. 870 + 27.63

P.I. Sta. 865 + 41.20
Est PK w/shiner

