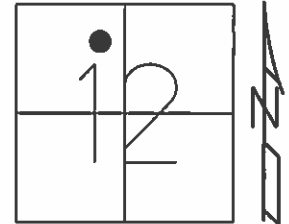


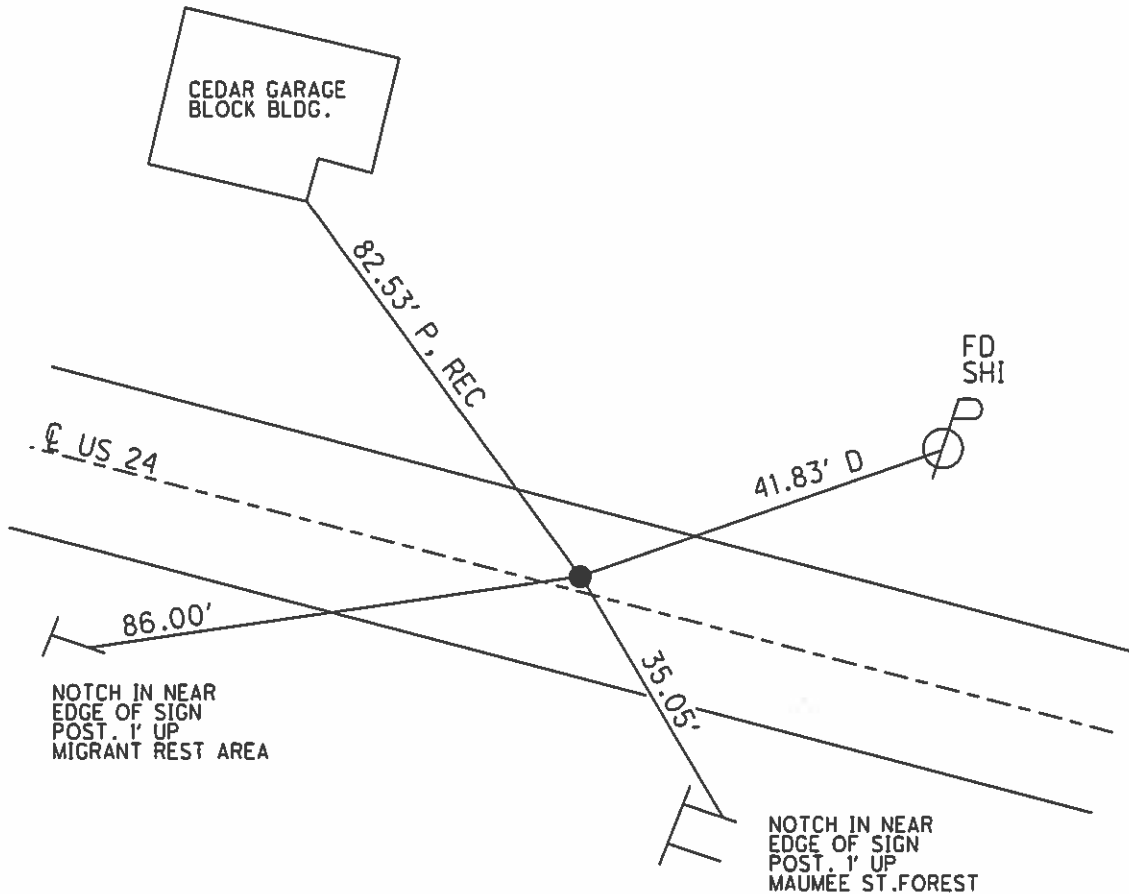
O.D.O.T. DISTRICT 2 SURVEY OFFICE (USE ONLY)

PERSONNEL _____ REFERENCE NO. 19 SHEET 1 OF 40
 NOTES SIMON DATE 4/23/93 ROUTE US 24
 H.C. LOEHRKE WEATHER SUNNY COUNTY HENRY
 R.C. CORDES TEMP. 65° TOWNSHIP LIBERTY
 _____ SECTION 12
 _____ T 5 N R 7 E

TYPE MONUMENT SM.R.R.SPIKE
 ON SURFACE - ~~BELOW~~ ON _____
 LEFT - ☉ PAV'T - ~~RIGHT~~ 1.5'
10.4' TO LT EDGE PAVEMENT
 S.L.M. 663+57



Grid: Northing: _____ Easting: _____



RECORD: P.T.
 STA. 870+27.63

RESET P.K./WASHER
 7/13/93, MB

O.D.O.T. DISTRICT 2 SURVEY OFFICE

PERSONNEL

REFERENCE NO. 19

SHEET 7 OF 40

NOTES Simon

H.C. Loehrke

R.C. Cordes

DATE 04-23-93

WEATHER Sunny

TEMP. +65°

ROUTE U.S. 24

COUNTY Henry

TOWNSHIP Liberty

SECTION 12-Fractional

T. 5 N R. 7 E

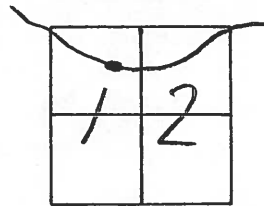
TYPE MONUMENT Small RR Spike

ON SURFACE -- ~~BELOW~~ yes

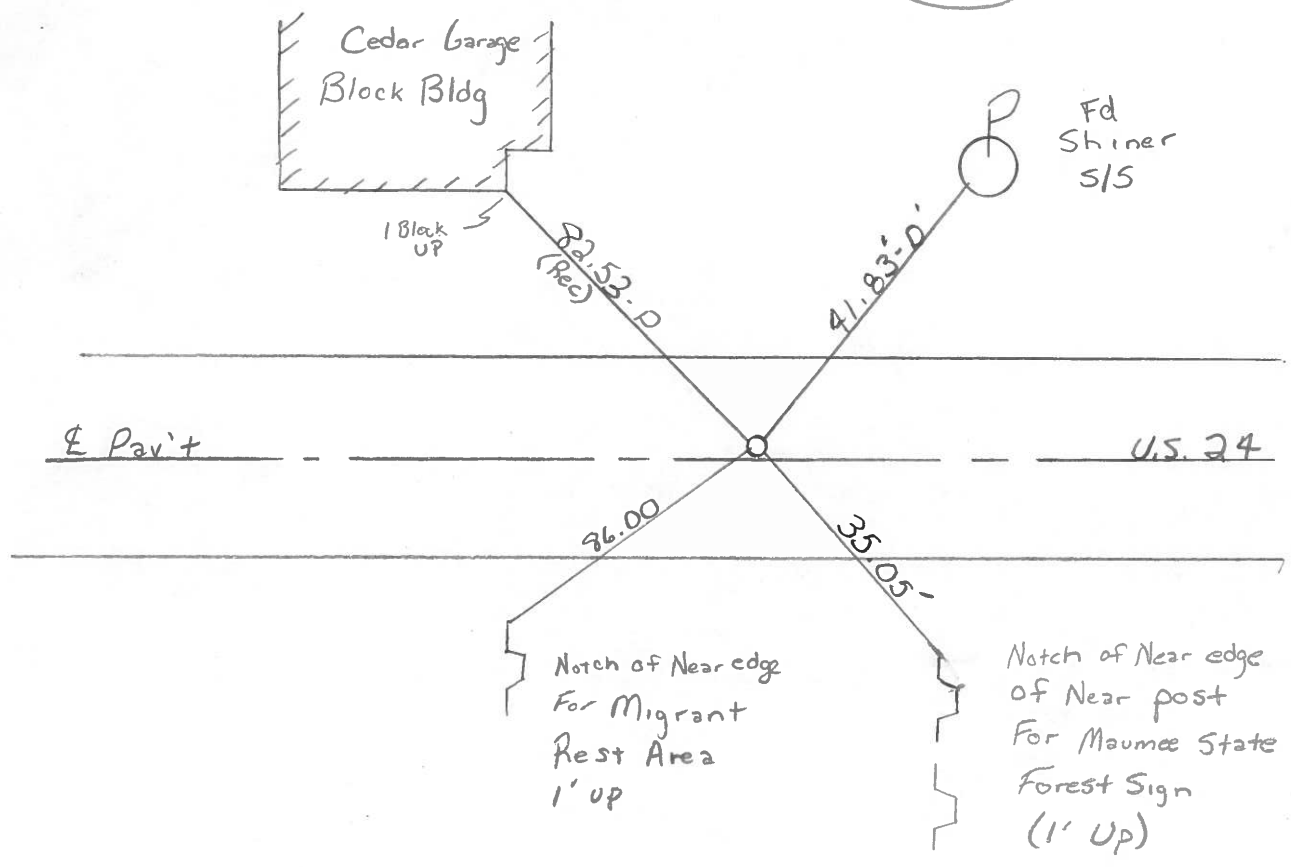
LEFT - ~~PAV'T.~~ RIGHT 1.5 to E

10.4 TO LEFT EDGE PAVEMENT

S.L.M. 663+57 12.57



Reset PK + WASHER
7-13-93
MB



P.T. STA 870+ 27.63 Rec.

County HENRY S.R. -U.S. 24

Township LIBERTY

Section 12 - FRACTIONAL

T5N, R7E

Personnel Hoffman

Loehrke

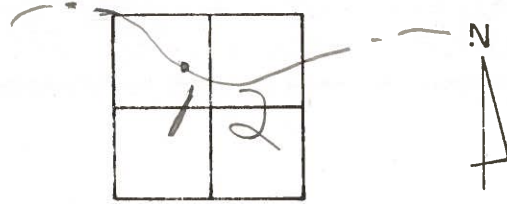
Householder

(19)

Date 6-2-81

Weather OVERCAST

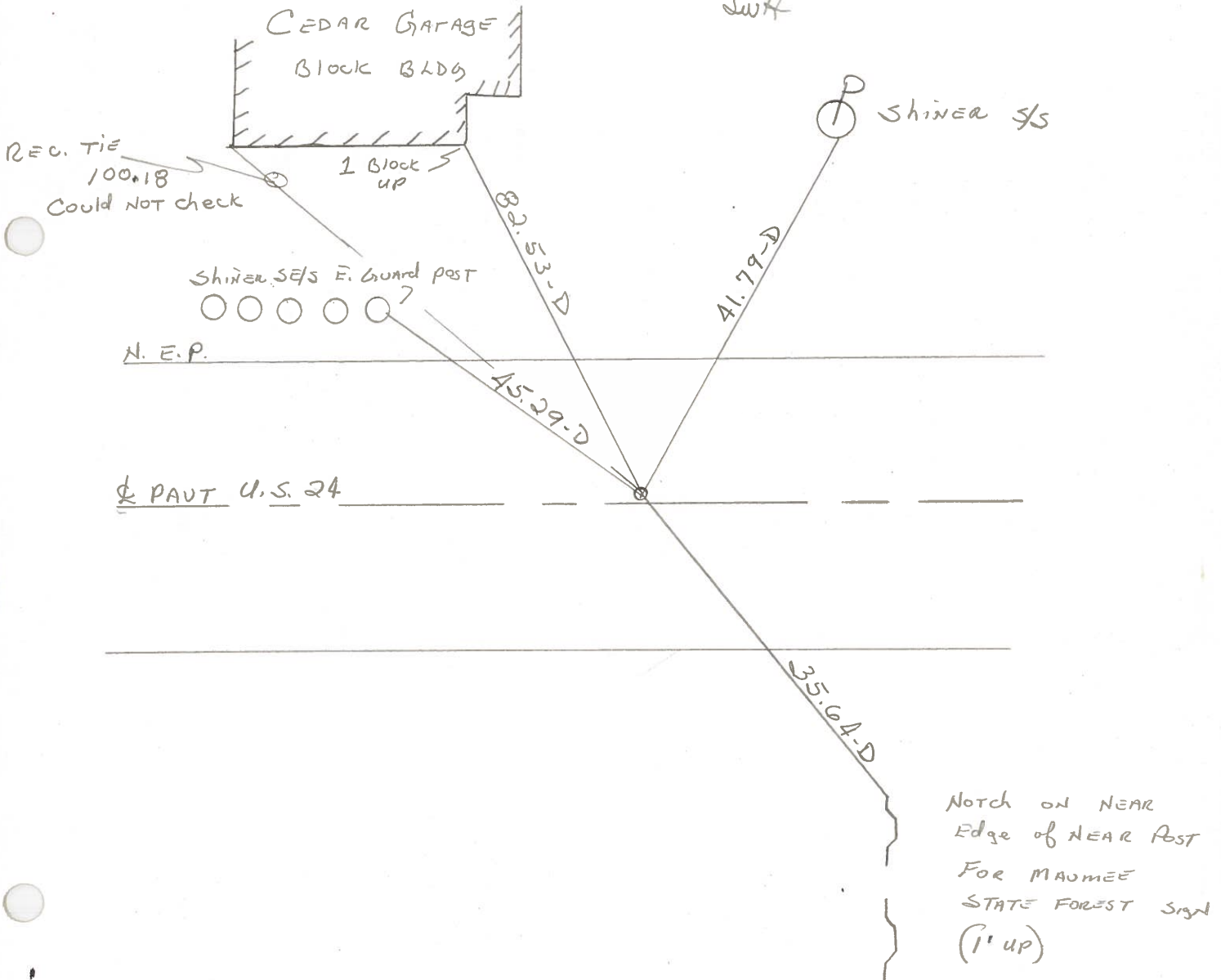
Temp. + 65°



Fd. P.K. 2" Below Surface
22.5' to S. Edge PAVT.

PROJECT STA. ± 860 + 43

1.5' N. OF $\&$ SET SMALL R.R. SPK. 9-2-81
SWH



$\&$ PAVT U.S. 24

Notch on NEAR
Edge of NEAR Post
For MAUMEE
STATE FOREST Sign
(1' up)

P.T. STA. 870 + 27.63 REC.

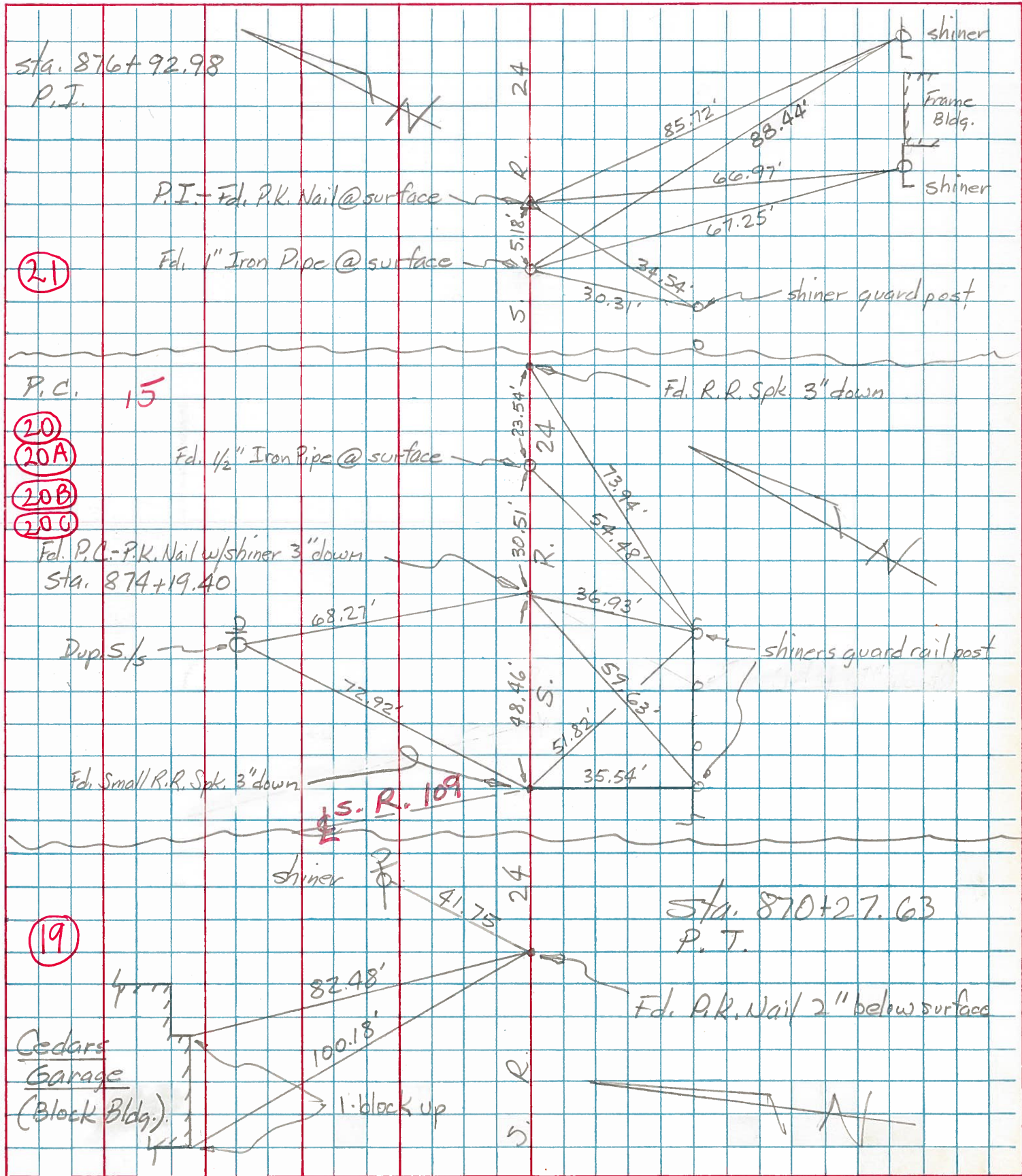
PERSONNEL	TITLE	PERSONNEL	TITLE
Tomsic			
Neuser			
Granata			

COUNTY HEN. DATE JUNE 24, 1975

S. R. 24 WEATHER _____

SEC. LIBERTY TWP TEMP. _____

DESCRIPTION WEST OF S.R. 109 JOB NO. _____



PERSONNEL TITLE PERSONNEL TITLE

Beach
Ruffer
Knappe
Delventhal

COUNTY Henry

DATE Apr 59

S. R. US-24

WEATHER _____

SEC 11.22

TEMP. _____

DESCRIPTION

Constr.

JOB NO. _____

LEFT

CENTER LINE

RIGHT

CURVE #

12

P.I. Sta. 865 + 41.20
 $\Delta - 4^{\circ} 52' \text{ Lt.}$
 $D - 0^{\circ} 30'$
 $T - 486.90'$
 $L - 973.33'$
 $E - 10.31'$
 $R - 11459.15$

P.C. Sta 860 + 54.30
 P.T. Sta. 870 + 27.63

P.I. Sta. 865 + 41.20
 Est PK w/shiner

