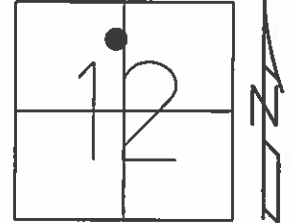


O.D.O.T. DISTRICT 2 SURVEY OFFICE (USE ONLY)

PERSONNEL \_\_\_\_\_ REFERENCE NO. 20 SHEET 2 OF 40  
 NOTES NUHFER DATE 7/14/08 ROUTE US 24  
 H.C. HUSS WEATHER SUNNY COUNTY HENRY  
 R.C. MOSER TEMP. 75° TOWNSHIP LIBERTY  
 \_\_\_\_\_ SECTION 12  
 \_\_\_\_\_ T 5 N R 7 E

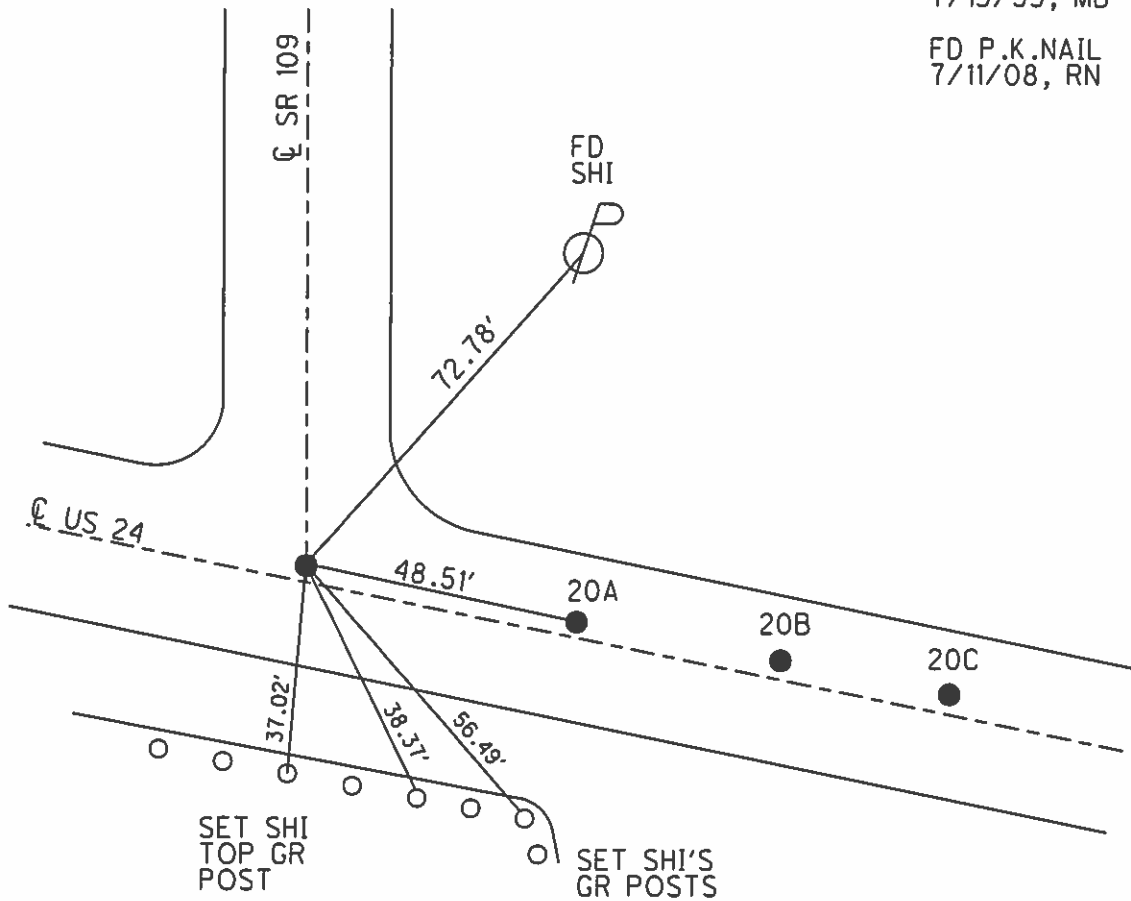
TYPE MONUMENT P.K.SHANK  
 ON SURFACE - ~~BELOW~~ ON \_\_\_\_\_  
 LEFT - ☉ PAV'T - ~~RIGHT~~ 1.2'  
 - TO - EDGE PAVEMENT  
 S.L.M. 667+00  
 Grid: Northing: \_\_\_\_\_ Easting: \_\_\_\_\_



FD SM.R.R.SPIKE  
5/26/93, C.L.

RESET P.K./WASHER  
7/13/93, MB

FD P.K.NAIL  
7/11/08, RN



# O.D.O.T. DISTRICT 2 SURVEY OFFICE

PERSONNEL

REFERENCE NO. 20

SHEET 8 OF 40

NOTES LOGHAKS

H.C. BARNHISEL

DATE 5-26-93

ROUTE U.S. 24

R.C. CANTER BURY

WEATHER Clear

COUNTY Henry

Newell

TEMP. +50

TOWNSHIP Liberty

SECTION 12-Fractional

T.5 N R.7 E

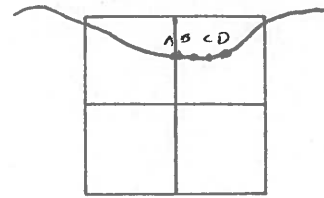
TYPE MONUMENT Sm R.R. Spikes

ON SURFACE - BELOW Yes - ALL

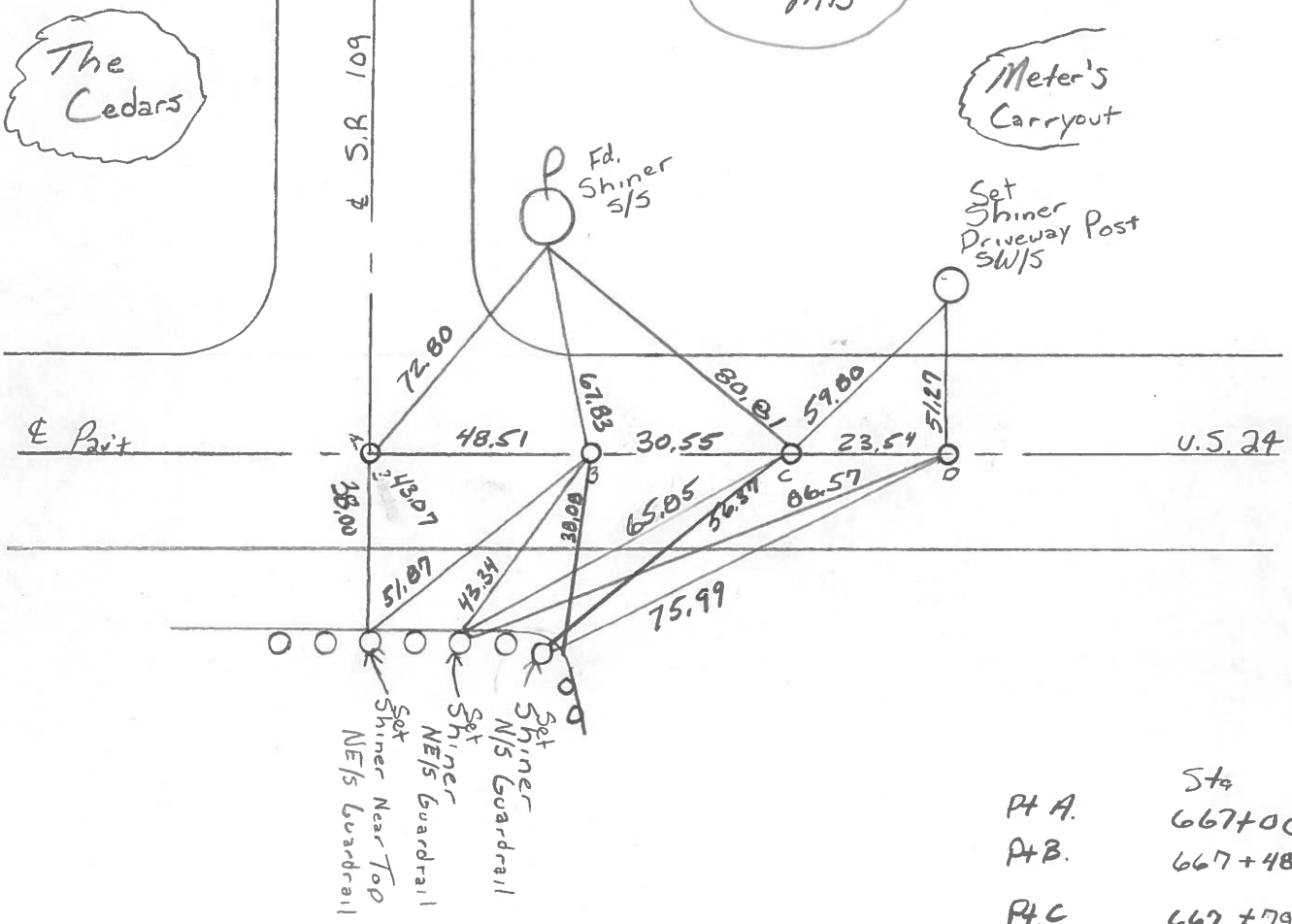
LEFT - & PAV'T. - RIGHT Yes, ALL

TO EDGE PAVEMENT

S.L.M. PA = 667+00 12.63



Reset PK's + WASHERS  
7-13-93  
m13



Pt A.	Sta
	667+00
Pt B.	667+48
Pt C.	667+79
Pt D.	668+03

Pt "B" = P.C. Sta. 874+19.40 Rec.

County Henry S.R. -U.S.24

Township Liberty

Section 12 - FRACTIONAL

T5N, R7E

Personnel HOFFMAN

Householder

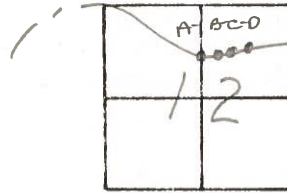
Loehrke

#15

Date 6-2-81

Weather OVERCAST

Temp. +65°



- (20)
- (20A)
- (20B)
- (20C)

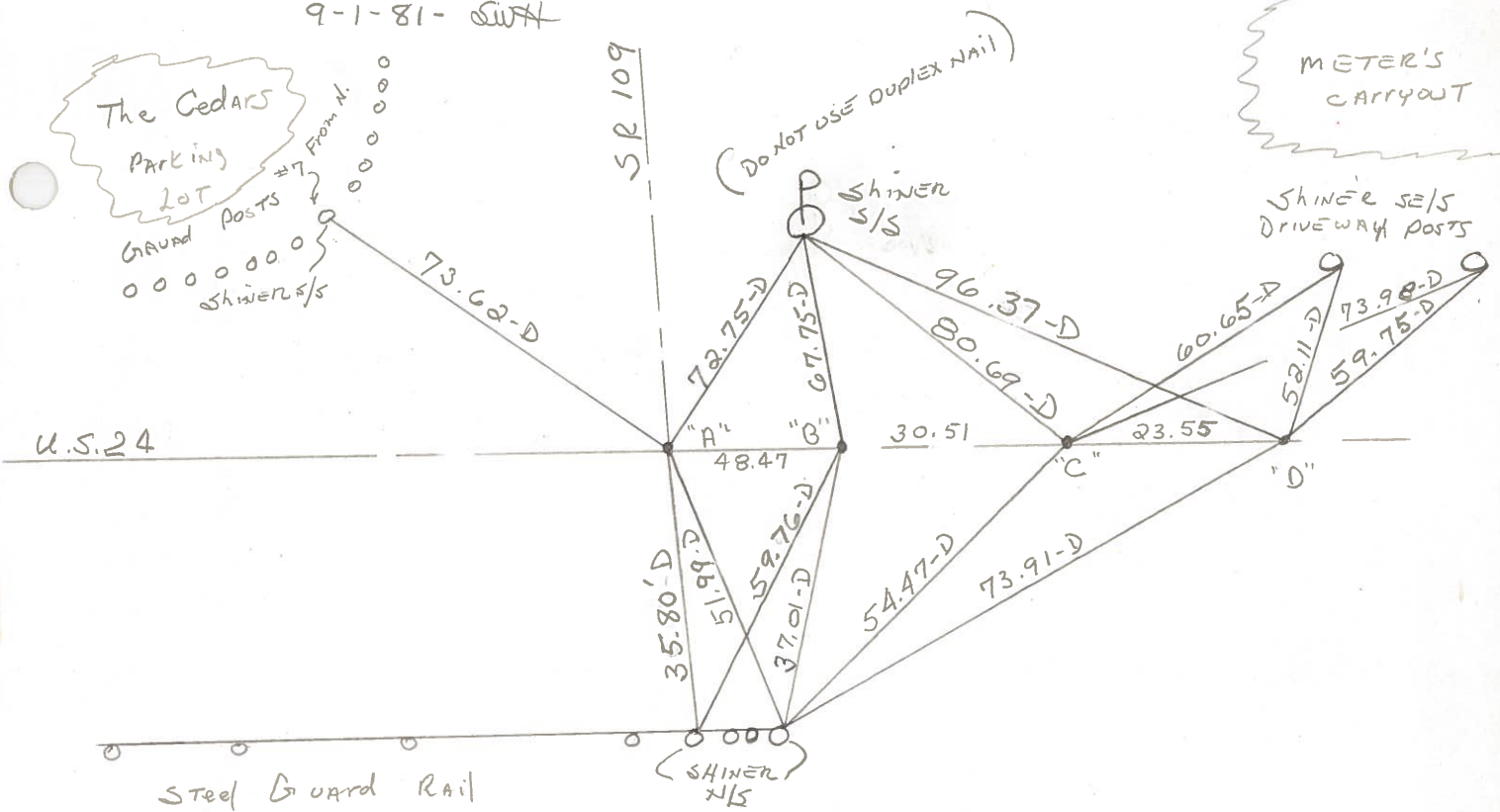
PT. "A" Fd. small R.R. spk. 3" below surface 0.65 N. of E

PT. "B" Fd. P.K. 3" below surface — PROJECT STA ± 864+35  
0.30'S. OF E

PT. "C" Fd. 1/2" IRON PIPE 1" below surface 0.60'S. OF E

PT. "D" Fd. R.R. SPK 3" below surface 0.85'S. OF E

SET SMALL R.R. SPKS @ ALL POINTS  
9-1-81 - SWH



PT. "B" = P.C. STA. 874+19.40 REC.

PERSONNEL	TITLE	PERSONNEL	TITLE
Tomsic			
Neuser			
Granata			

COUNTY HEN. DATE JUNE 24, 1975

S. R. 24 WEATHER \_\_\_\_\_

SEC. LIBERTY TWP TEMP. \_\_\_\_\_

DESCRIPTION WEST OF S.R. 109 JOB NO. \_\_\_\_\_

