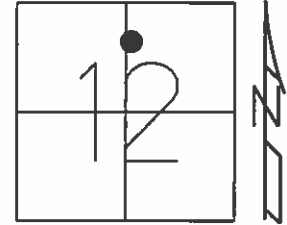


O.D.O.T. DISTRICT 2 SURVEY OFFICE (USE ONLY)

PERSONNEL \_\_\_\_\_ REFERENCE NO. 20 A SHEET 3 OF 40  
 NOTES NUHFER DATE 7/14/08 ROUTE US 24  
 H.C. HUSS WEATHER SUNNY COUNTY HENRY  
 R.C. MOSER TEMP. 75° TOWNSHIP LIBERTY  
 \_\_\_\_\_ SECTION 12  
 \_\_\_\_\_ T 5 N R 7 E

TYPE MONUMENT P.K.NAIL  
 ON SURFACE - ~~BELOW~~ ON  
 LEFT - ☉ PAV'T - ~~RIGHT~~ 1.2'  
- TO - EDGE PAVEMENT  
 S.L.M. 667+48  
 Grid: Northing: - Easting: -

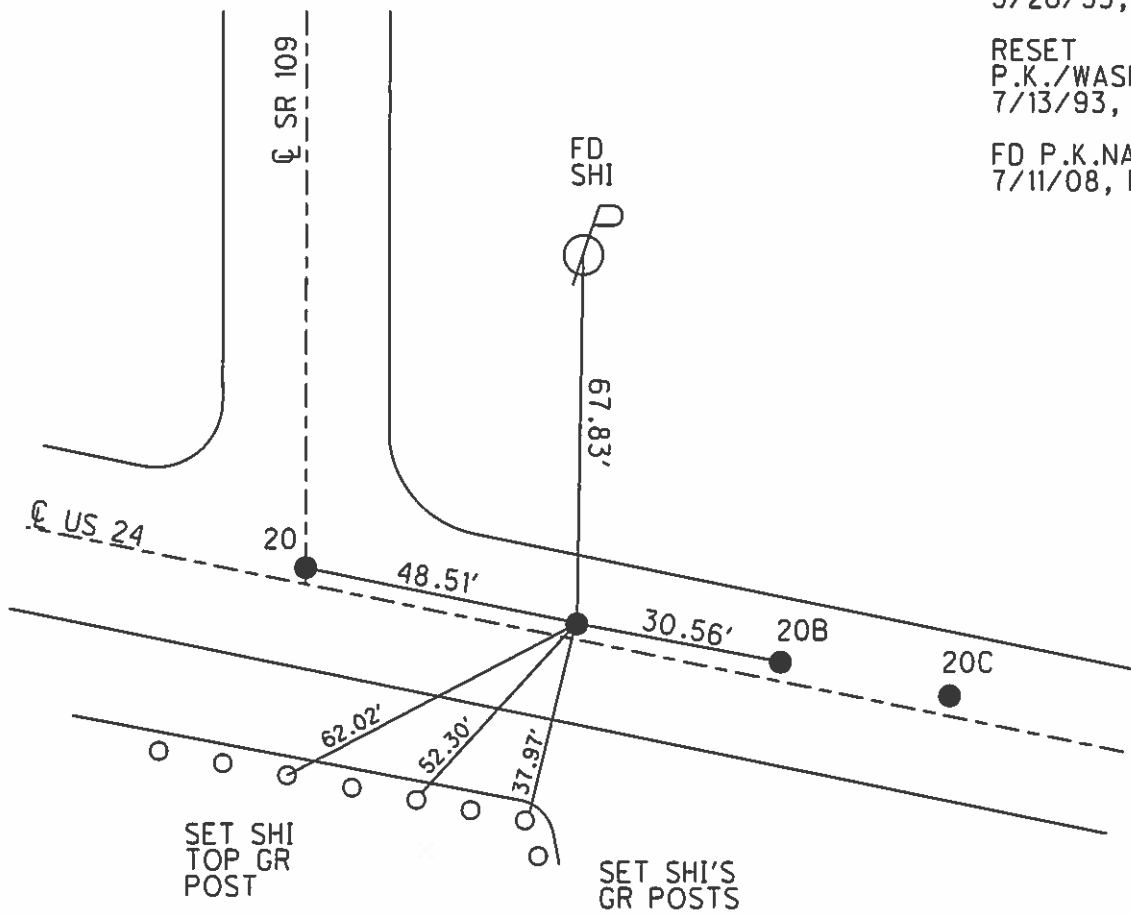


RECORD: P.C.  
 STA. 874+19.40

FD SM.R.R.SPIKE  
 5/26/93, C.L.

RESET  
 P.K./WASHER  
 7/13/93, MB

FD P.K.NAIL  
 7/11/08, RN



# O.D.O.T. DISTRICT 2 SURVEY OFFICE

PERSONNEL

REFERENCE NO. 20

SHEET 8 OF 40

NOTES LOEHRKE

H.C. BARNHISEL

DATE 5-26-93

ROUTE U.S. 24

R.C. CANTER BURY

WEATHER Clear

COUNTY Henry

Newell

TEMP. +50

TOWNSHIP Liberty

SECTION 12 Fractional

T 5 N R 7 E

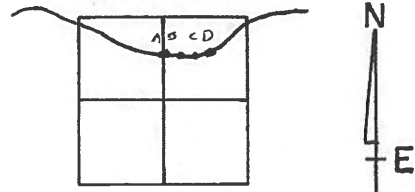
TYPE MONUMENT Sm R.R. Spikes

ON SURFACE - BELOW Yes - ALL

LEFT - PAV'T. - RIGHT Yes ALL

TO EDGE PAVEMENT

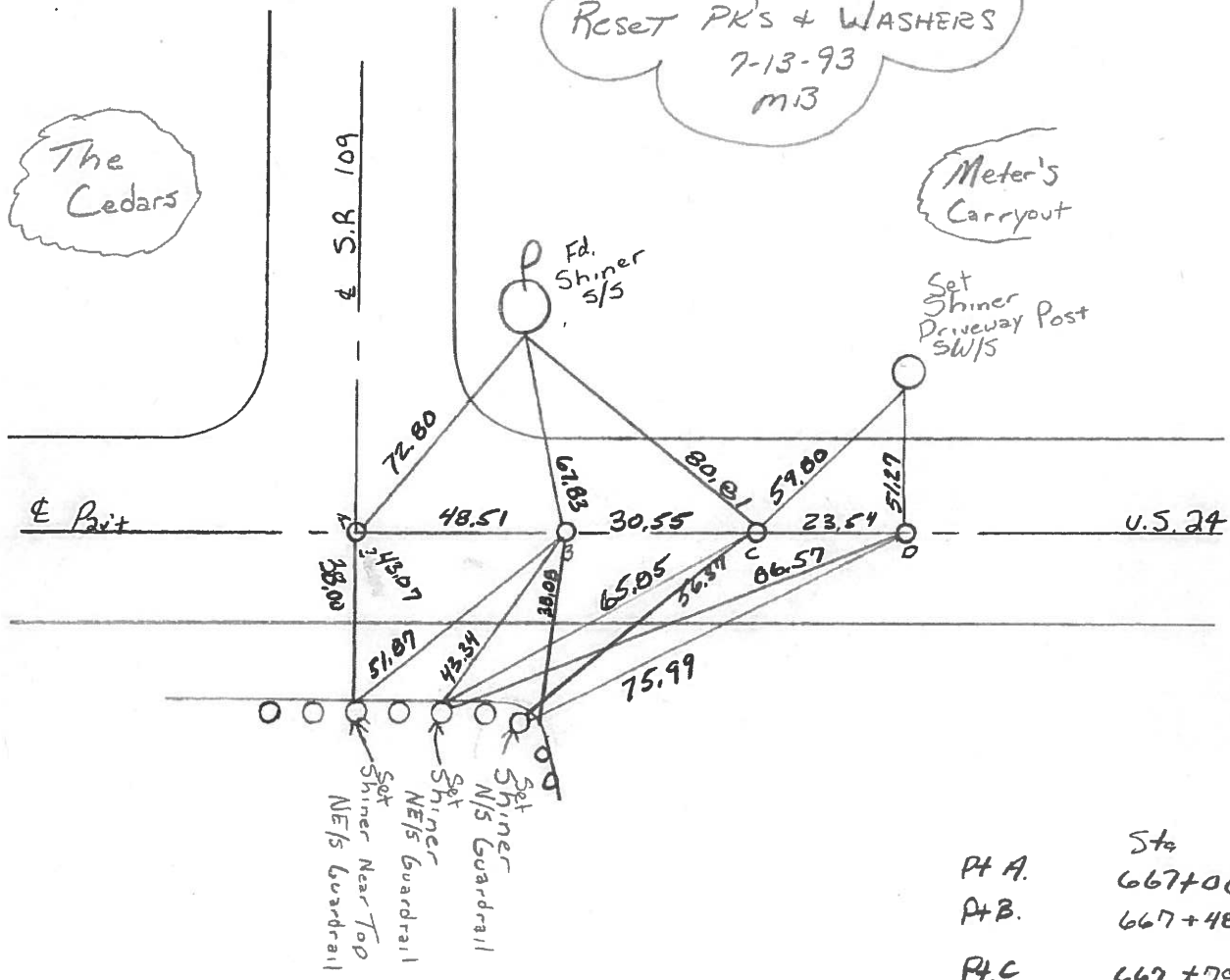
S.L.M. PA = 667+00 12.63



The Cedars

Reset PK's + WASHERS  
7-13-93  
m13

Meter's Carryout



Pt A.	Sta
	667+00
Pt B.	667+48
Pt C.	667+79
Pt D.	668+03

Pt "B" = P.C. Sta. 874+19.40 Rec.

County Henry S.R. - U.S. 24

Date 6-2-81

Township Liberty

Weather OVERCAST

Section 12 - FRACTIONAL

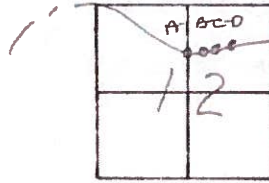
Temp. +65°

T5N, R7E

Personnel HOFFMAN

#15

Householder  
Loehrke



- (20)
- (20A)
- (20B)
- (20C)

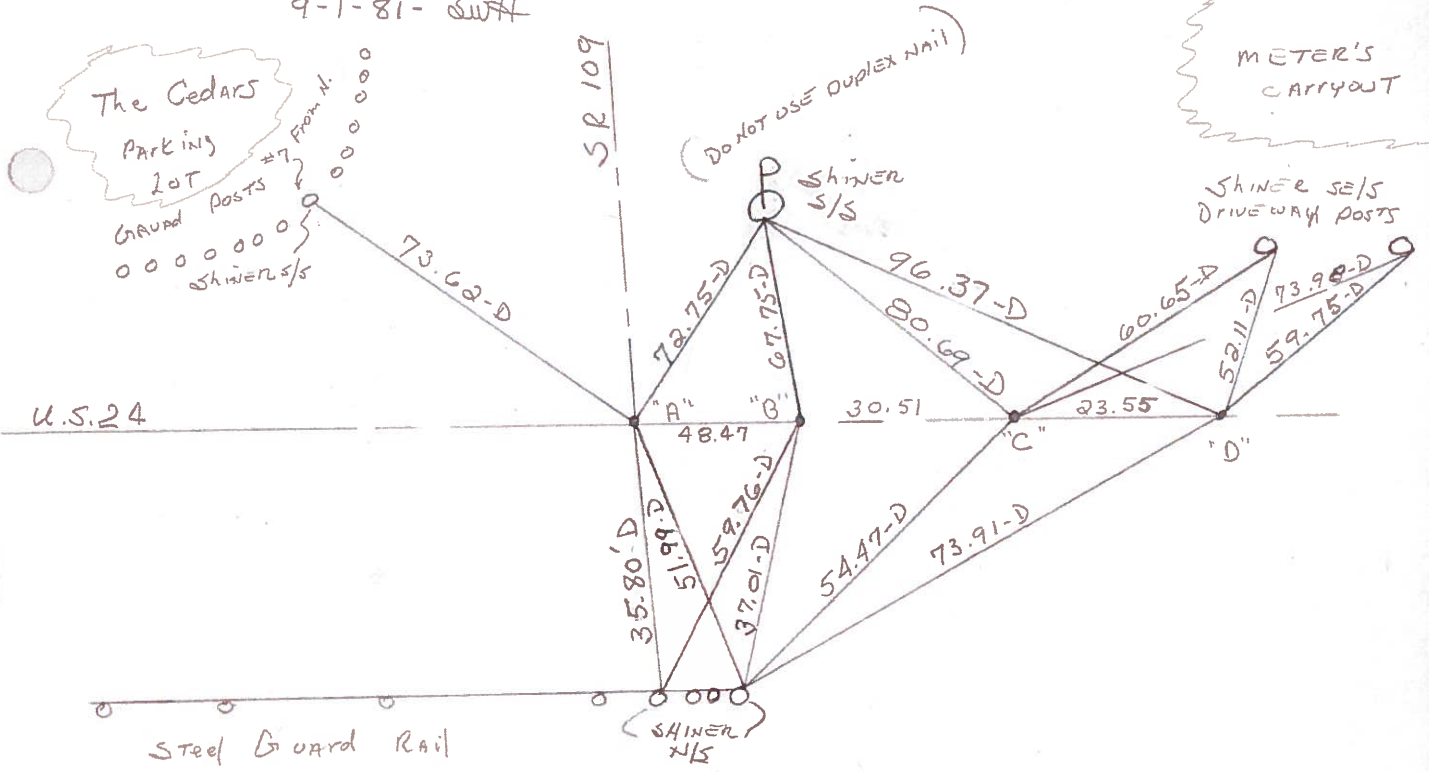
PT. "A" Fd. SMALL R.R. SPK. 3" Below surface 0.65' N. of  $\phi$

PT. "B" Fd. P.K. 3" Below surface — PROJECT STA  $\pm$  864+35  
0.30' S. of  $\phi$

PT. "C" Fd. 1/2" IRON PIPE 1" Below surface 0.60' S. of  $\phi$

PT. "D" Fd. R.R. SPK 3" Below surface 0.85' S. of  $\phi$

SET SMALL R.R. SPKS @ ALL POINTS  
9-1-81- SWA

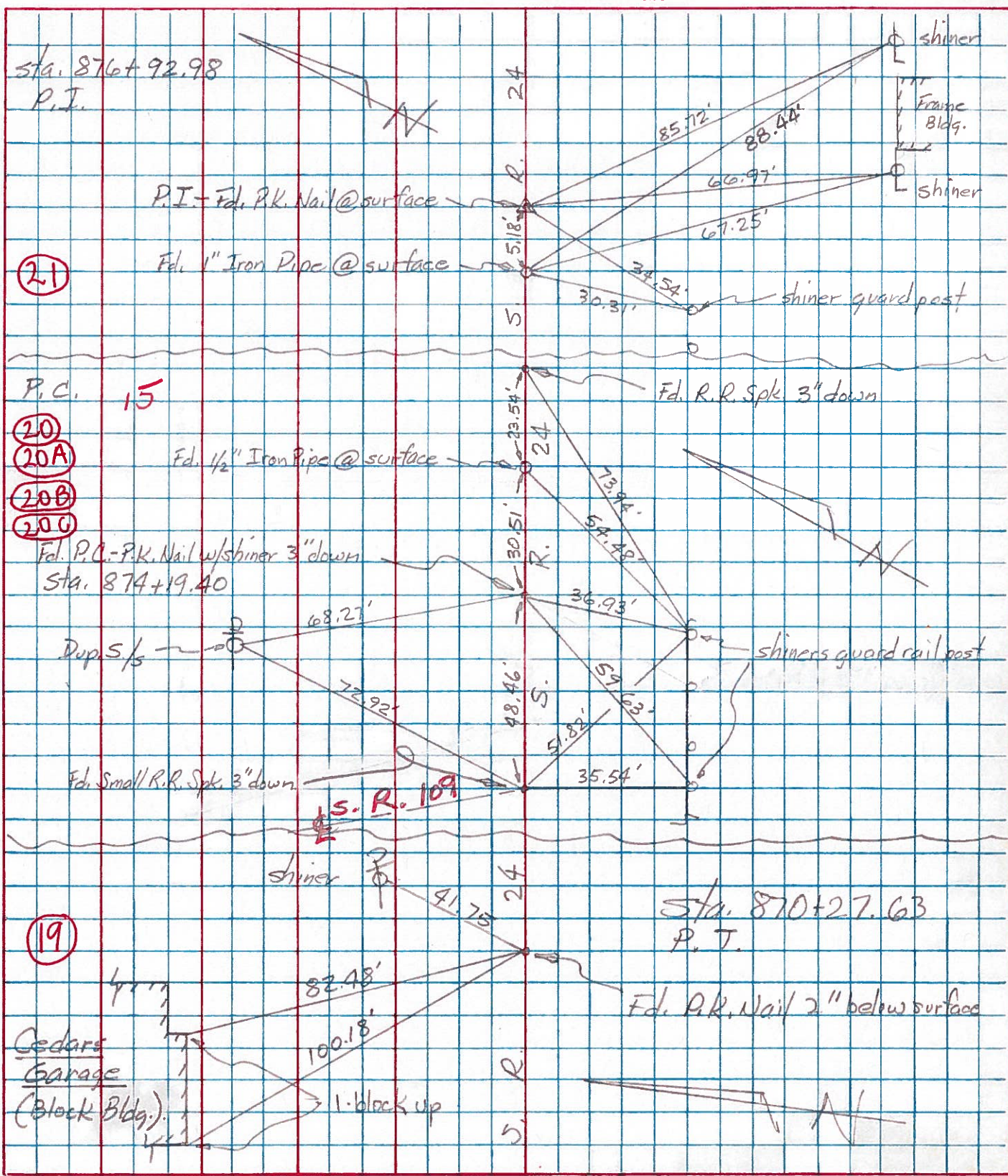


PT. "B" = P.C. STA. 874+19.40 REC.



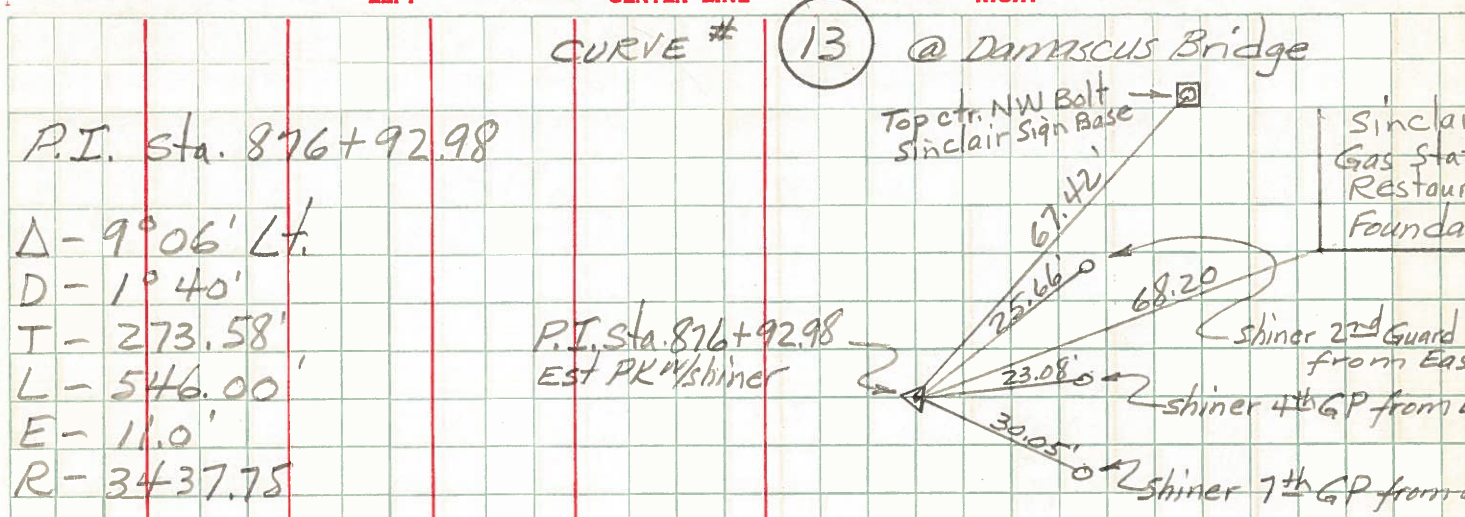
PERSONNEL	TITLE	PERSONNEL	TITLE	COUNTY	DATE
Tomsic				HEN.	JUNE 24, 1975
Neuser				S. R. 24	WEATHER
Granata				SEC. LIBERTY TWP	TEMP.

DESCRIPTION WEST OF S.R. 109





PERSONNEL	TITLE	PERSONNEL	TITLE	COUNTY	Henry	DATE	Apr '59
Beach				S. R.	US-24	WEATHER	
Rutter				SEC.	11.22	TEMP.	
Knape				DESCRIPTION	Const.		
Delventhal				LEFT	CENTER LINE	RIGHT	JOB NO.



$\Delta - 9^{\circ}06' Lt.$   
 $D - 1^{\circ}40'$   
 $T - 273.58'$   
 $L - 546.00'$   
 $E - 11.0'$   
 $R - 3437.75'$

P.C. Sta. 874+19.40  
 P.T. Sta. 879+65.40

