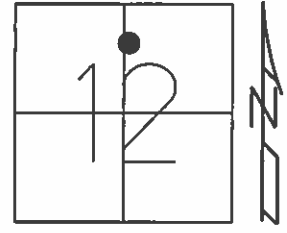


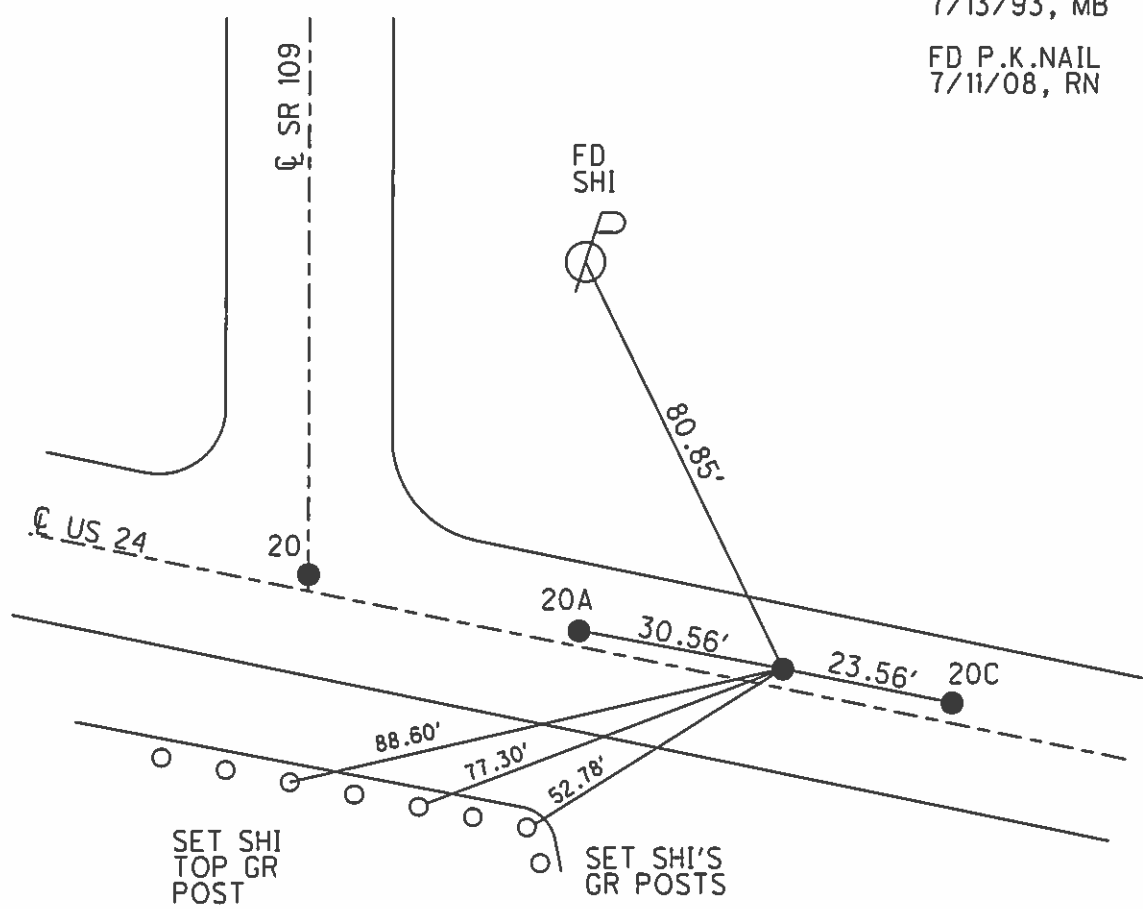
O.D.O.T. DISTRICT 2 SURVEY OFFICE (USE ONLY)

PERSONNEL \_\_\_\_\_ REFERENCE NO. 20 B SHEET 4 OF 40  
 NOTES NUHFER DATE 7/14/08 ROUTE US 24  
 H.C. HUSS WEATHER SUNNY COUNTY HENRY  
 R.C. MOSER TEMP. 75° TOWNSHIP LIBERTY  
 \_\_\_\_\_ SECTION 12  
 \_\_\_\_\_ T 5 N R 7 E

TYPE MONUMENT P.K.NAIL  
 ON SURFACE - ~~BELOW~~ ON  
 LEFT - ☉ PAV'T - ~~RIGHT~~ 1.2'  
- TO - EDGE PAVEMENT  
 S.L.M. 667+79  
 Grid: Northing: - Easting: -



FD SM.R.R.SPIKE  
 5/26/93, C.L.  
 RESET P.K./WASHER  
 7/13/93, MB  
 FD P.K.NAIL  
 7/11/08, RN



# O.D.O.T. DISTRICT 2 SURVEY OFFICE

PERSONNEL

REFERENCE NO. 20

SHEET 8 OF 40

NOTES LOGHRKE

H.C. BARNHISEL

DATE 5-26-93

ROUTE U.S. 24

R.C. CANTERBURY

WEATHER Clear

COUNTY Henry

Newell

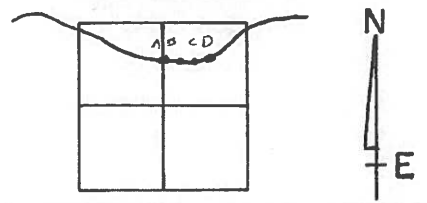
TEMP. +50

TOWNSHIP Liberty

SECTION 12 Fractional

T 5 N R 7 E

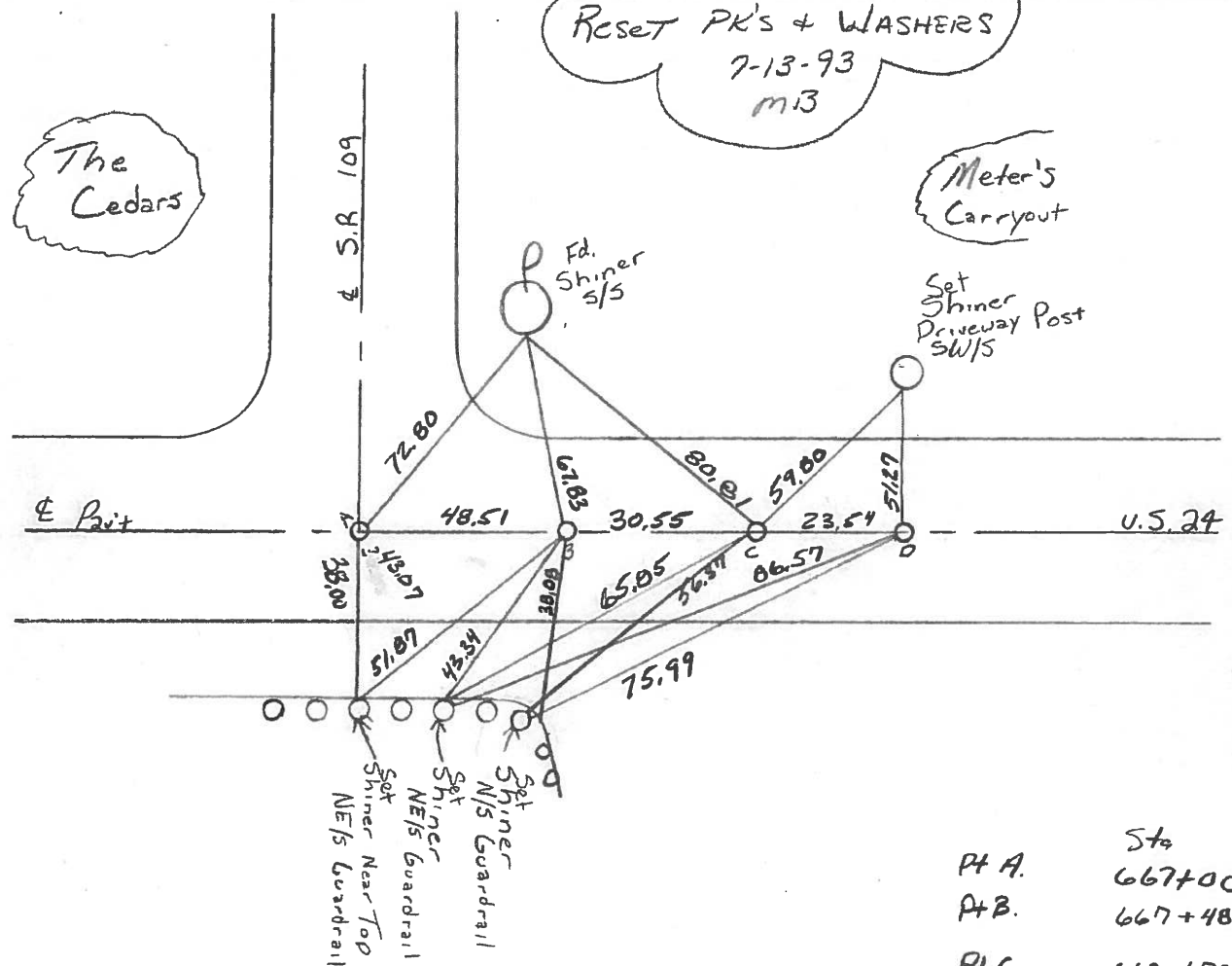
TYPE MONUMENT Sm R.R. Spikes  
 ON SURFACE - BELOW Yes - ALL  
 LEFT - & PAV'T. - RIGHT Yes - ALL  
 TO EDGE PAVEMENT  
 S.L.M. PA = 667+00 12.63



Reset PK's + WASHERS  
7-13-93  
m13

The Cedars

Meter's Carryout



Pt A.	Sta
	667+00
Pt B.	667+48
Pt C.	667+79
Pt D.	668+03

Pt "B" = P.C. Sta. 874+19.40 Rec.

County Henry S.R. - U.S. 24

Date 6-2-81

Township Liberty

Weather OVERCAST

Section 12 - FRACTIONAL

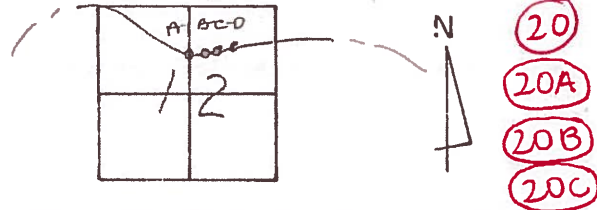
Temp. +65°

T5N, R7E

Personnel HOFFMAN

#15

Householder  
Loehrke



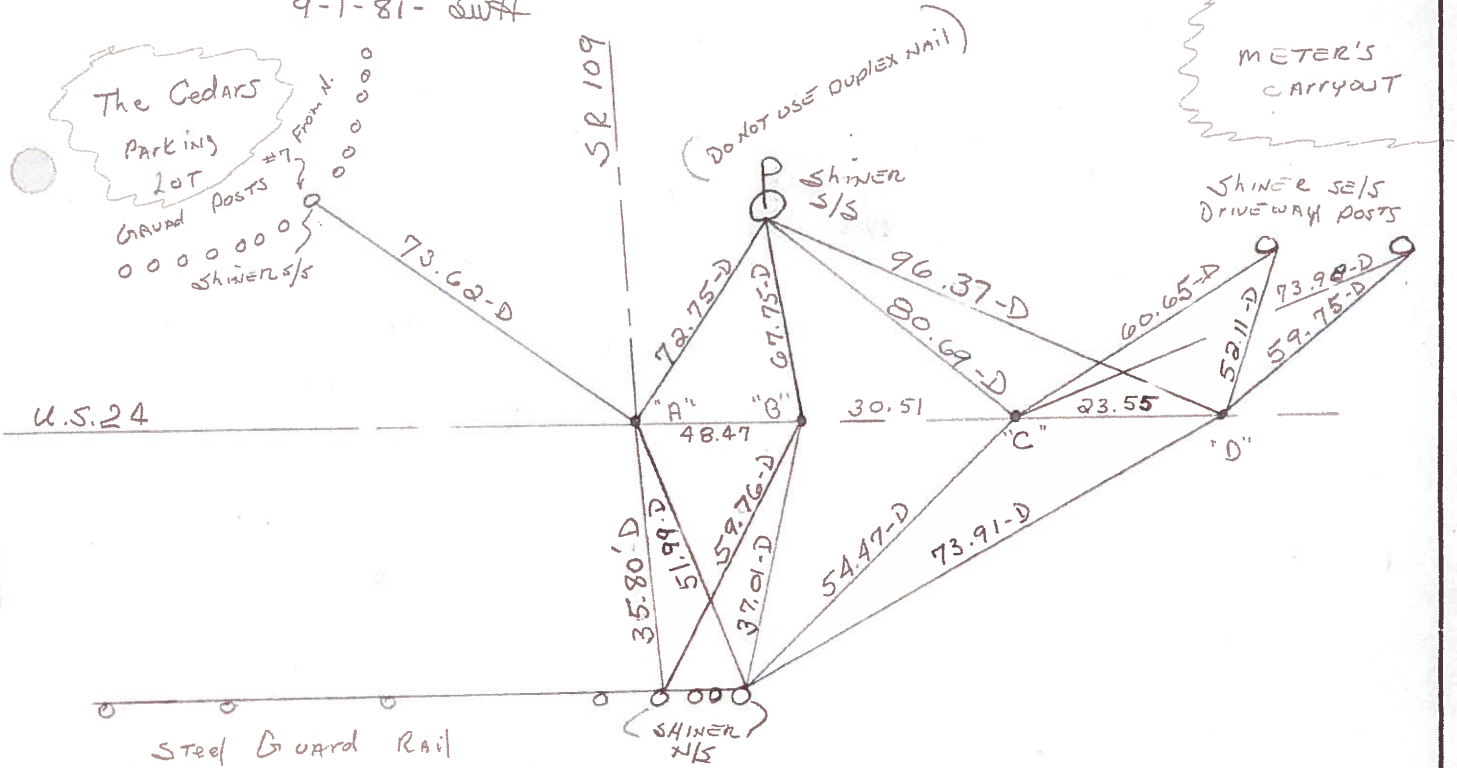
PT. "A" Fd. SMALL R.R. SPK. 3" Below surface 0.65 N. of  $\phi$

PT. "B" Fd. P.K. 3" Below surface — PROJECT STA  $\pm$  864+35  
0.30'S. OF  $\phi$

PT. "C" Fd. 1/2" IRON PIPE 1" Below surface 0.60'S. OF  $\phi$

PT. "D" Fd. R.R. SPK 3" Below surface 0.85'S. OF  $\phi$

SET SMALL R.R. SPKS @ ALL POINTS  
9-1-81- SWH



PT. "B" = P.C. STA. 874+19.40 REC.



PERSONNEL	TITLE	PERSONNEL	TITLE	COUNTY	DATE
Tomsic				HEN.	JUNE 24, 1975
Neuser				S. R. 24	WEATHER
Granata				SEC. LIBERTY TWP	TEMP.

DESCRIPTION WEST OF S.R. 109

