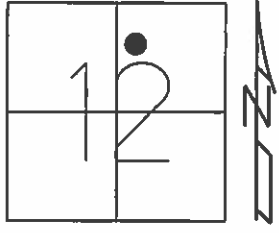


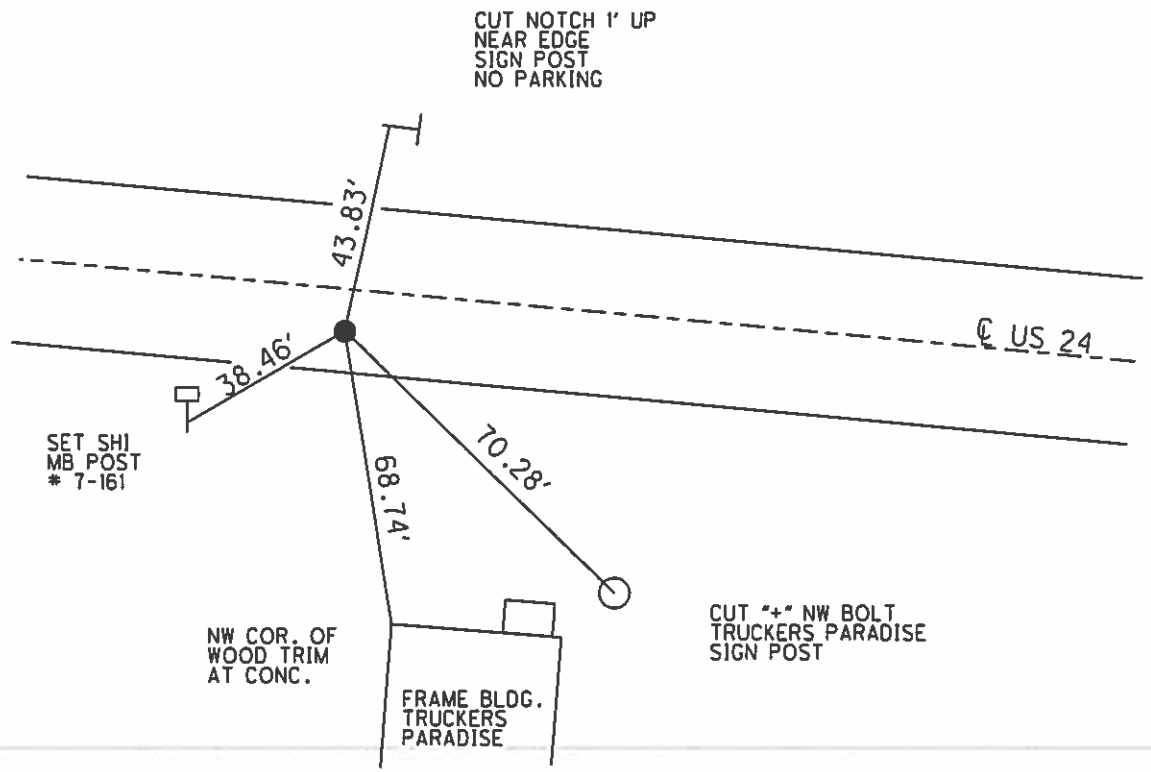
O.D.O.T. DISTRICT 2 SURVEY OFFICE (USE ONLY)

PERSONNEL _____ REFERENCE NO. 21 SHEET 6 OF 40
 NOTES NUHFER DATE 7/14/08 ROUTE US 24
 H.C. HUSS WEATHER SUNNY COUNTY HENRY
 R.C. MOSER TEMP. 75° TOWNSHIP LIBERTY
 _____ SECTION 12
 _____ T 5 N R 7 E

TYPE MONUMENT P.K.NAIL
 ON SURFACE - ~~BELOW~~ ON
~~LEFT~~ - Q PAV'T - RIGHT 12.2'
10.7' TO RT EDGE PAVEMENT
 S.L.M. 670+18
 Grid: Northing: - Easting: -



RECORD: PROJECT
 STA.876+00
 FD SM.R.R.SPIKE
 5/26/93, C.L.
 RESET P.K./WASHER
 7/13/93, MB
 FD P.K.NAIL
 7/11/08, RN



O.D.O.T. DISTRICT 2 SURVEY OFFICE

PERSONNEL

REFERENCE NO. 21

SHEET 9 OF 40

NOTES LOEHRKE

H.C. BARNHISEL

R.C. CANTERBURY

Newell

DATE 5-26-93

WEATHER Nice

TEMP. +55

ROUTE U.S. 24

COUNTY Henry

TOWNSHIP Liberty

SECTION 12 - Fractional

T 5 N R 7 E

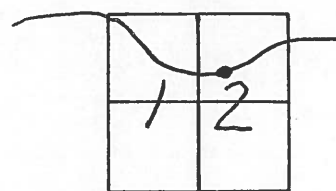
TYPE MONUMENT Sm. R.R. Spike

ON SURFACE - BELOW Yes

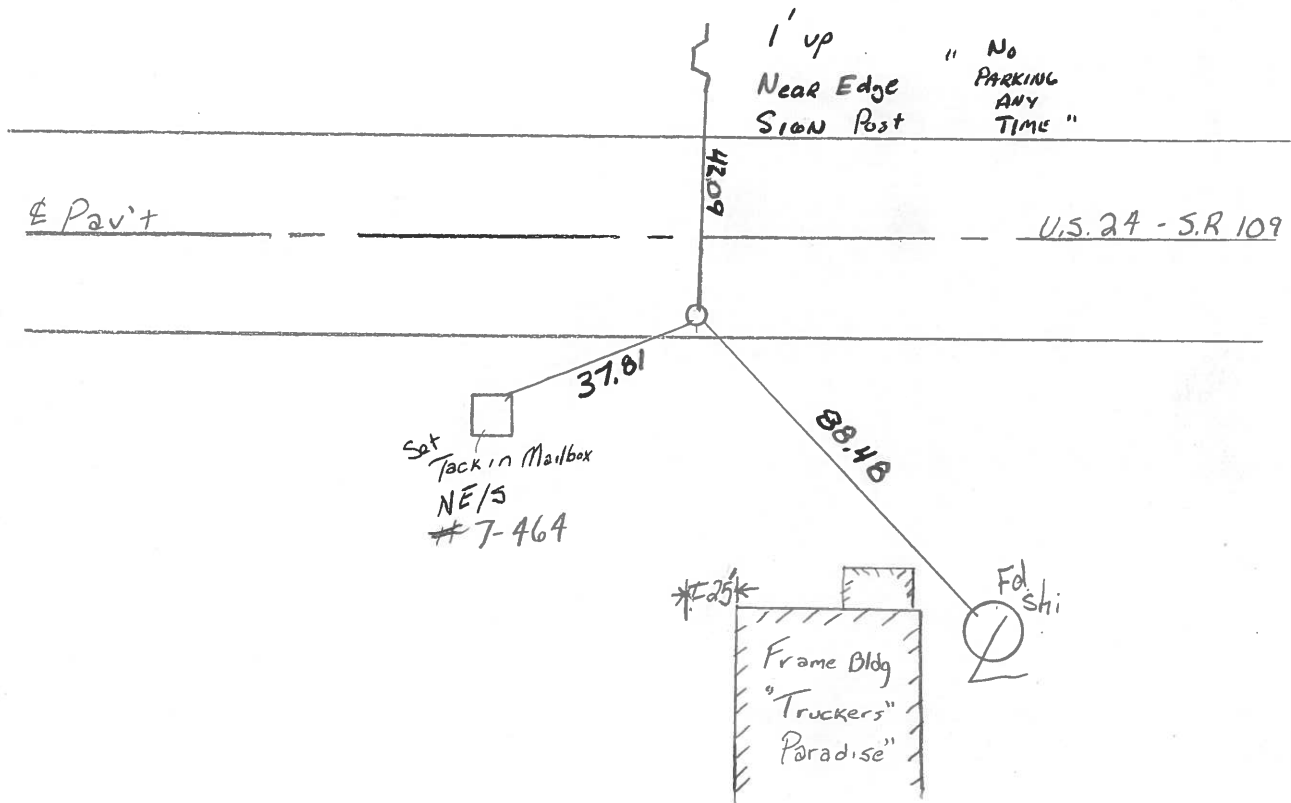
LEFT - ~~X~~ PAV'T. - RIGHT 12.6

TO EDGE PAVEMENT

S.L.M. 670+18 12.69



RESET P.K. & WASHER
 7-13-93
 M.B.



PROJECT STA 867

County HENRY S.R. - U.S. 24

Township LIBERTY

Section 12 - FRACTIONAL

T5N, R7E

Personnel Hoffman

Loehrke

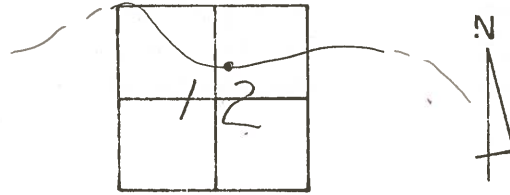
Householder

(21)

Date 6-2-81

Weather OVERCAST

Temp. +70°



Fd. 1" IRON PIPE 1" Below Surface PROJECT STA. ± 867+03
 14.4' TO S. Edge PAUT.
 SET SMALL R.R. SPK. 9-1-81 SWH
 12.6' S. OF. & PAUT.
 1.0' S. OF. WHITE STRIPE

N. E. P.

& PAUT US 24 - SR109

S. E. P.

Guard Posts



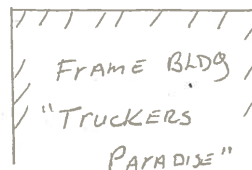
Shiner N/S

30.38-D

67.29-D

88.44-D

Shiner N/S



Shiner N/S

PERSONNEL TITLE PERSONNEL TITLE

Tomsic
Neuser
Granata

COUNTY HEN.

DATE JUNE 24, 1975

S. R. 24

WEATHER

SEC. LIBERTY TWP

TEMP.

DESCRIPTION

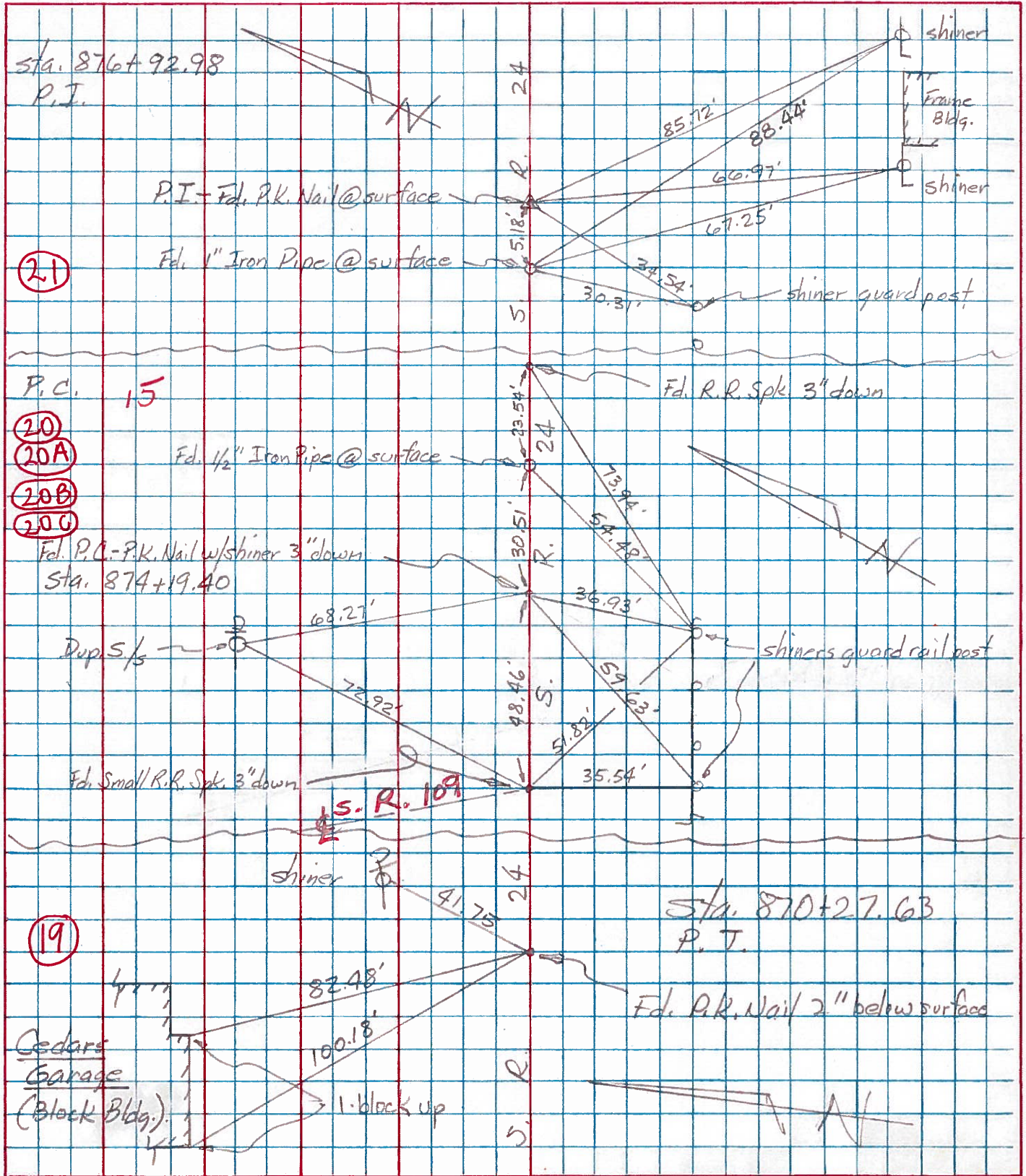
WEST OF S.R. 109

JOB NO.

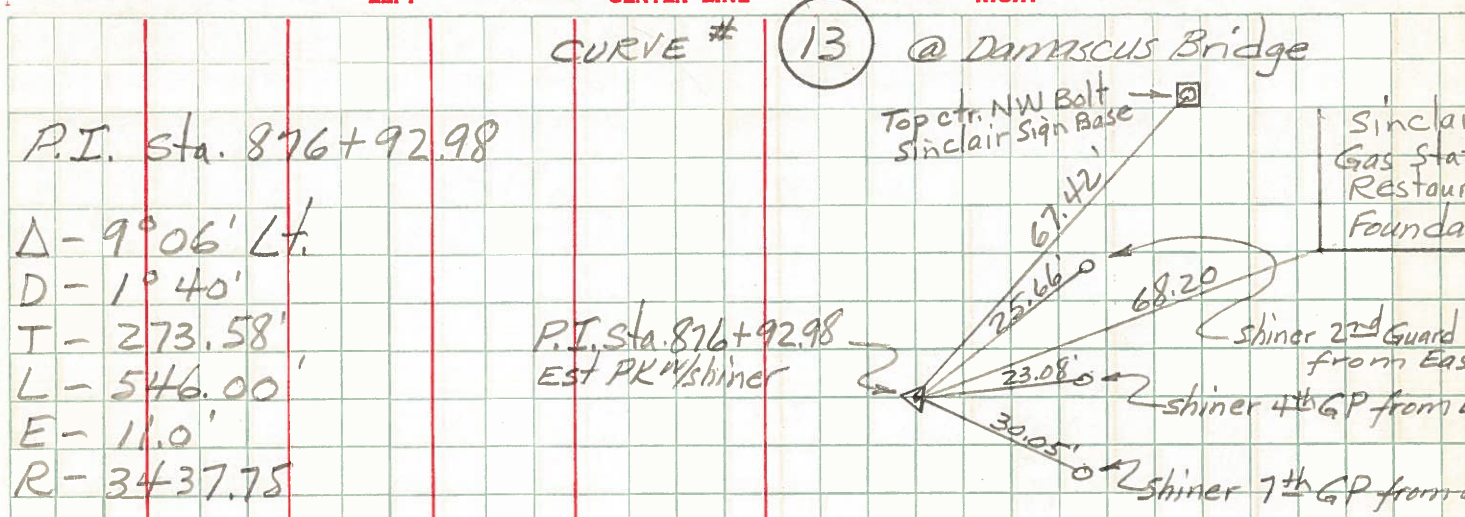
LEFT

CENTER LINE

RIGHT



PERSONNEL	TITLE	PERSONNEL	TITLE	COUNTY	Henry	DATE	Apr '59
Beach				S. R.	US-24	WEATHER	
Rutter				SEC.	11.22	TEMP.	
Knape				DESCRIPTION	Const.		
Delventhal				LEFT	CENTER LINE	RIGHT	JOB NO.



Δ - 9° 06' Lt.

D - 1° 40'

T - 273.58'

L - 546.00'

E - 11.0'

R - 3437.75'

P.C. Sta. 874+19.40

P.T. Sta. 879+65.40

