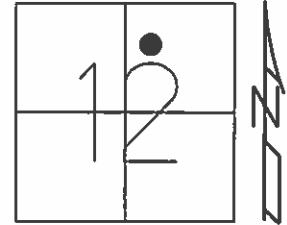


O.D.O.T. DISTRICT 2 SURVEY OFFICE (USE ONLY)

PERSONNEL \_\_\_\_\_ REFERENCE NO. 22 SHEET 7 OF 40  
 NOTES NUHFER DATE 7/14/08 ROUTE US 24  
 H.C. HUSS WEATHER SUNNY COUNTY HENRY  
 R.C. MOSER TEMP. 75° TOWNSHIP LIBERTY  
 \_\_\_\_\_ SECTION 12  
 \_\_\_\_\_ T 5 N R 7 E

TYPE MONUMENT P.K./WASHER  
 ON SURFACE - ~~BELOW~~ ON  
 LEFT - ☉ PAV'T - RIGHT ON  
- TO - EDGE PAVEMENT  
 S.L.M. 672+56

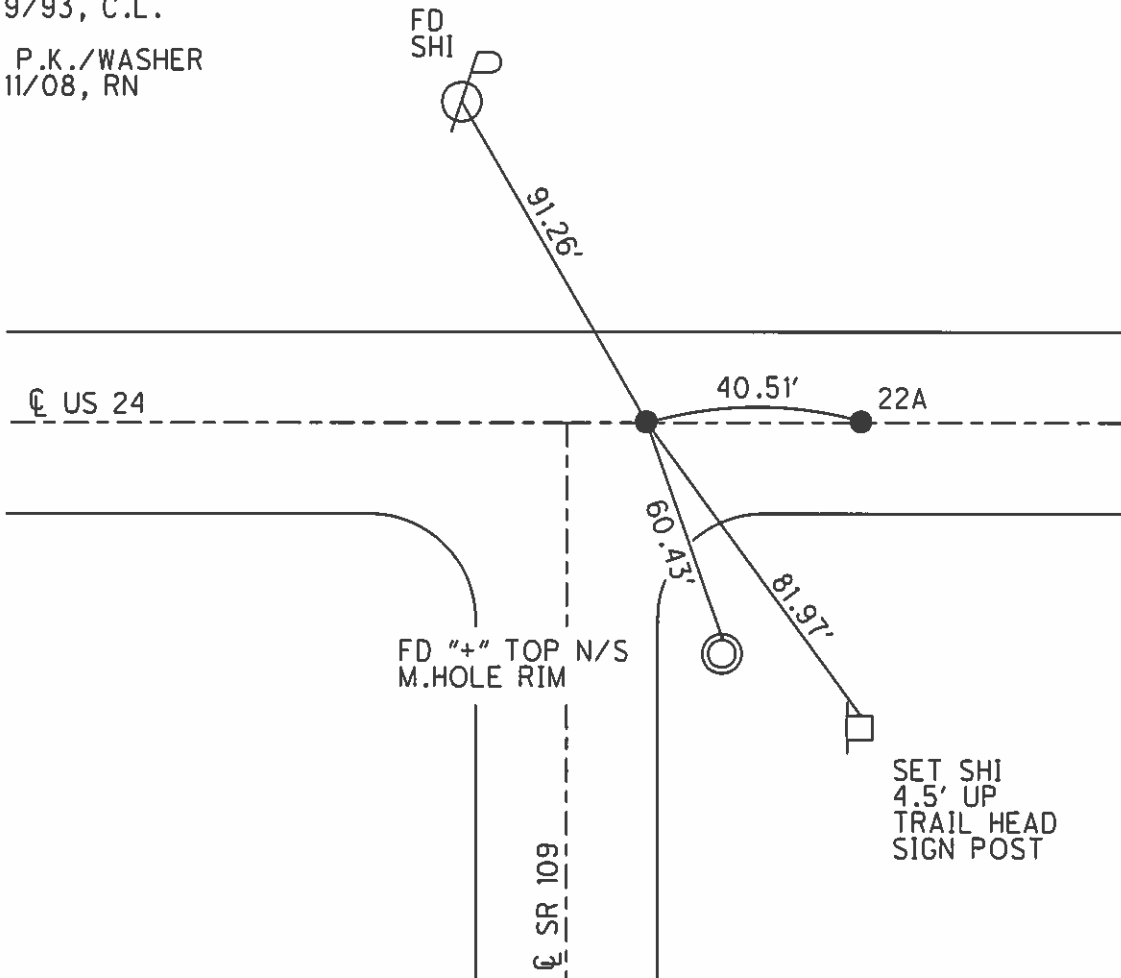


Grid: Northing: - Easting: -

FD SM.R.R.SPIKE  
 5/26/93, C.L.

RESET P.K./WASHER  
 8/9/93, C.L.

FD P.K./WASHER  
 7/11/08, RN



# O.D.O.T. DISTRICT 2 SURVEY OFFICE

PERSONNEL

REFERENCE NO. 22

SHEET 10 OF 40

NOTES LOEHRKE

H.C. BARWISE

R.C. CANTERBURY

Newell

DATE 5-26-93

WEATHER CLEAR

TEMP. +55

ROUTE U.S. 24

COUNTY Henry

TOWNSHIP Liberty

SECTION 12-Fractional

T 5 N R 7 E

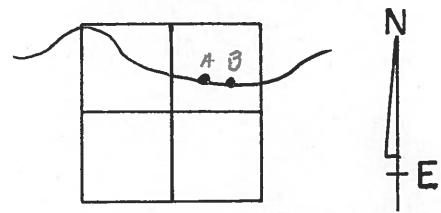
TYPE MONUMENT Sm. R.R. Spike

ON SURFACE - BELOW Yes

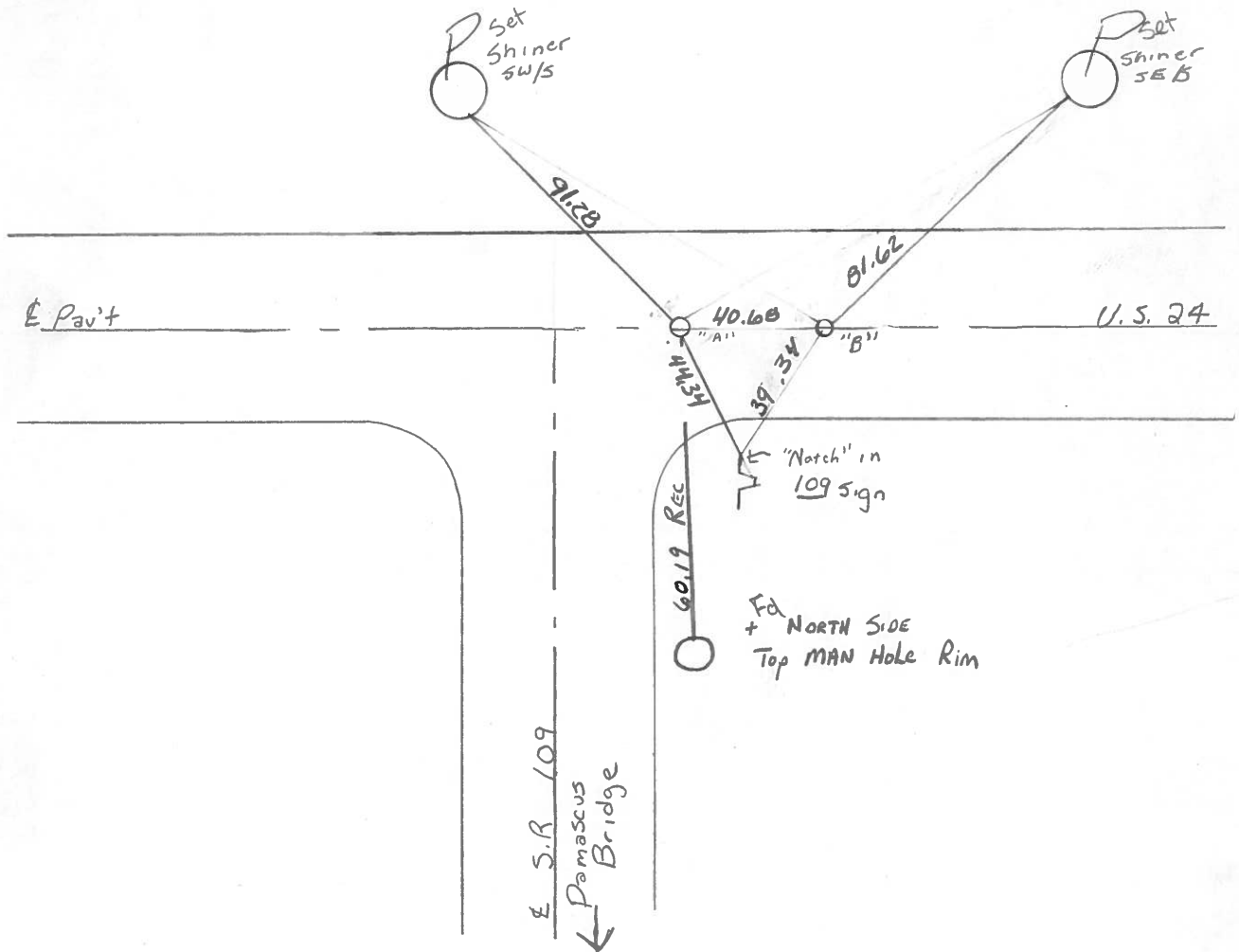
LEFT - CL PAV'T. - RIGHT Yes

TO EDGE PAVEMENT

S.L.M. 672+56 12.74



Pt "A" PK + Washer on CL Reset P.K and washers  
 Pt "B" <sup>sm</sup> R.R Spike CL  
 8-9-93  
 CL



Pt "B" P.T Sta. 879+65.46 Rec

County Henry S.R.-U.S. 24

Township Liberty

Section 12 - FRACTIONAL

T5N, R7E

Personnel Hoffman

Loehrke

Householder

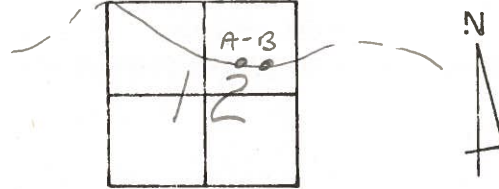
22

22A

Date 6-2-81

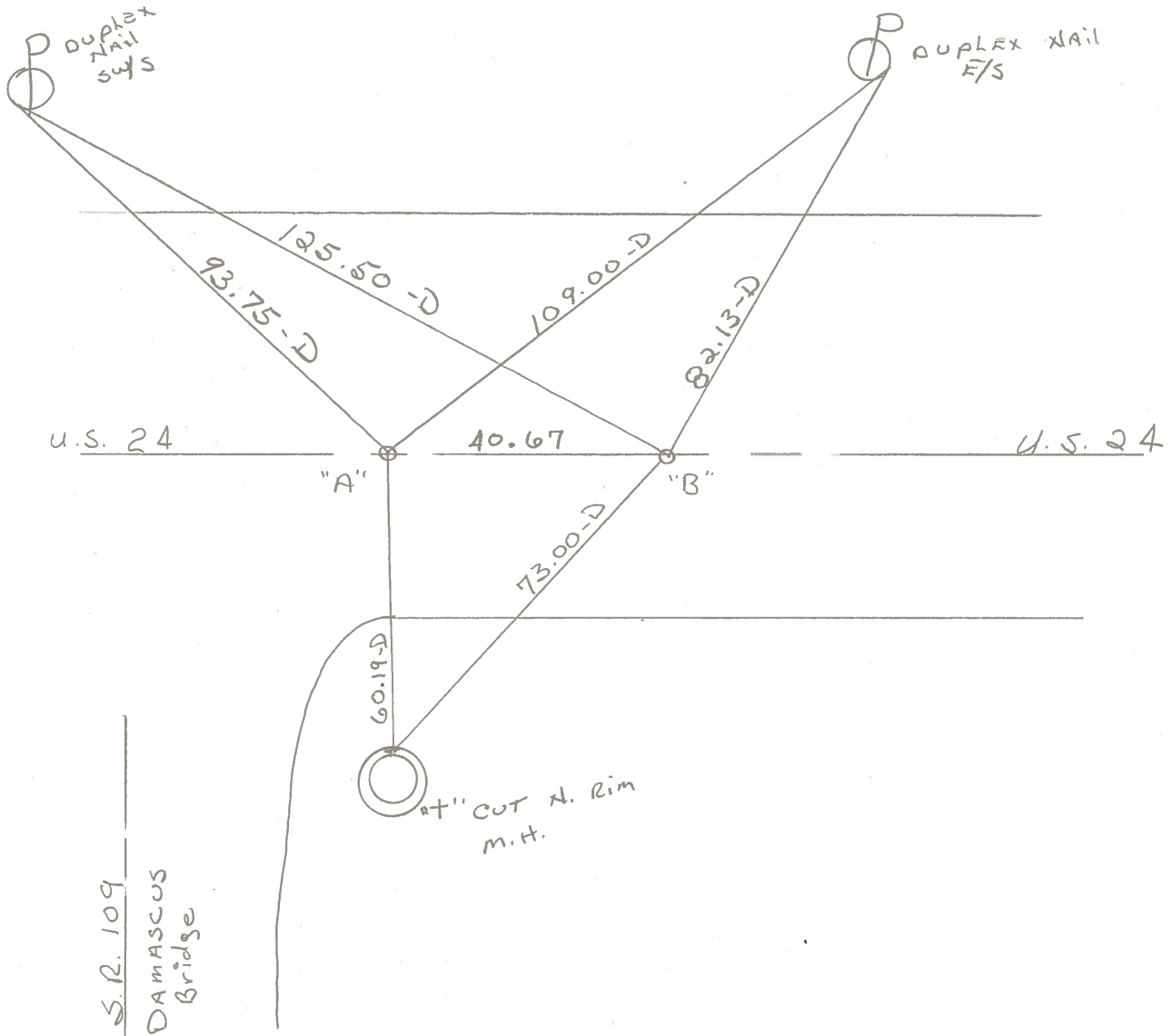
Weather OVERCAST

Temp. +70°



Pt. "A" Fd. P.K. @ SURFACE / 28.4' TO N. EDGE PAVT SET P.K. FWASHER

Pt. "B" Fd. P.K. 3" Below SURFACE / 27.3' TO N. EDGE PAVT. SET SMALL R.R. SAK. 9-1-81 SWN  
ON  $\Phi$  PROJECT STA.  $\pm$  869+79



S.R. 109  
DAMASCUS  
Bridge

Pt. "B" P.T. STA. 879+65.46 REC.