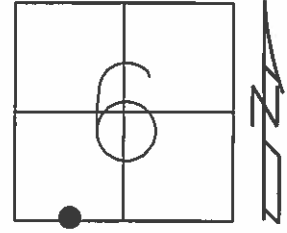


O.D.O.T. DISTRICT 2 SURVEY OFFICE (USE ONLY)

PERSONNEL _____ REFERENCE NO. 24 SHEET 10 OF 40
NOTES NUHFER DATE 7/14/08 ROUTE US 24
H.C. HUSS WEATHER SUNNY COUNTY HENRY
R.C. MOSER TEMP. 75° TOWNSHIP WASHINGTON
SECTION 6
T 5 N R 8 E

TYPE MONUMENT P.K.NAIL
ON SURFACE - ~~BELOW~~ ON _____
LEFT - ☉ PAV'T - ~~RIGHT~~ 0.5'
12.4' TO RT EDGE PAVEMENT
S.L.M. 714+93
Grid: Northing: _____ Easting: _____

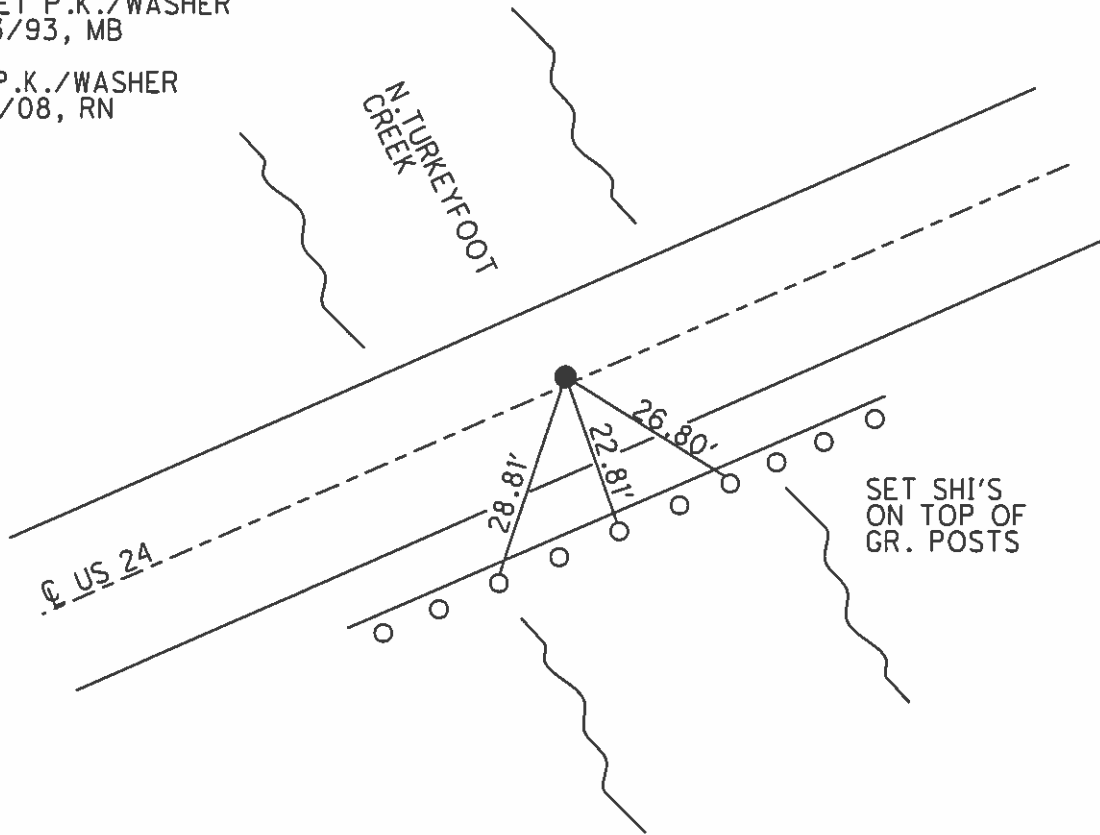


RECORD: P.C.
STA. 921+51.41

FD SM.R.R.SPIKE
5/26/93, C.L.

RESET P.K./WASHER
7/13/93, MB

FD P.K./WASHER
7/11/08, RN



O.D.O.T. DISTRICT 2 SURVEY OFFICE

PERSONNEL

REFERENCE NO. 24

SHEET 12 OF 40

NOTES LOEHRKE

H.C. BARNHISEL

R.C. CANTERBURY

Newell

DATE 5-26-93

WEATHER Nice

TEMP. +60

ROUTE U.S. 24

COUNTY Henry

TOWNSHIP Washington

SECTION 6

T 5 N R 8 E

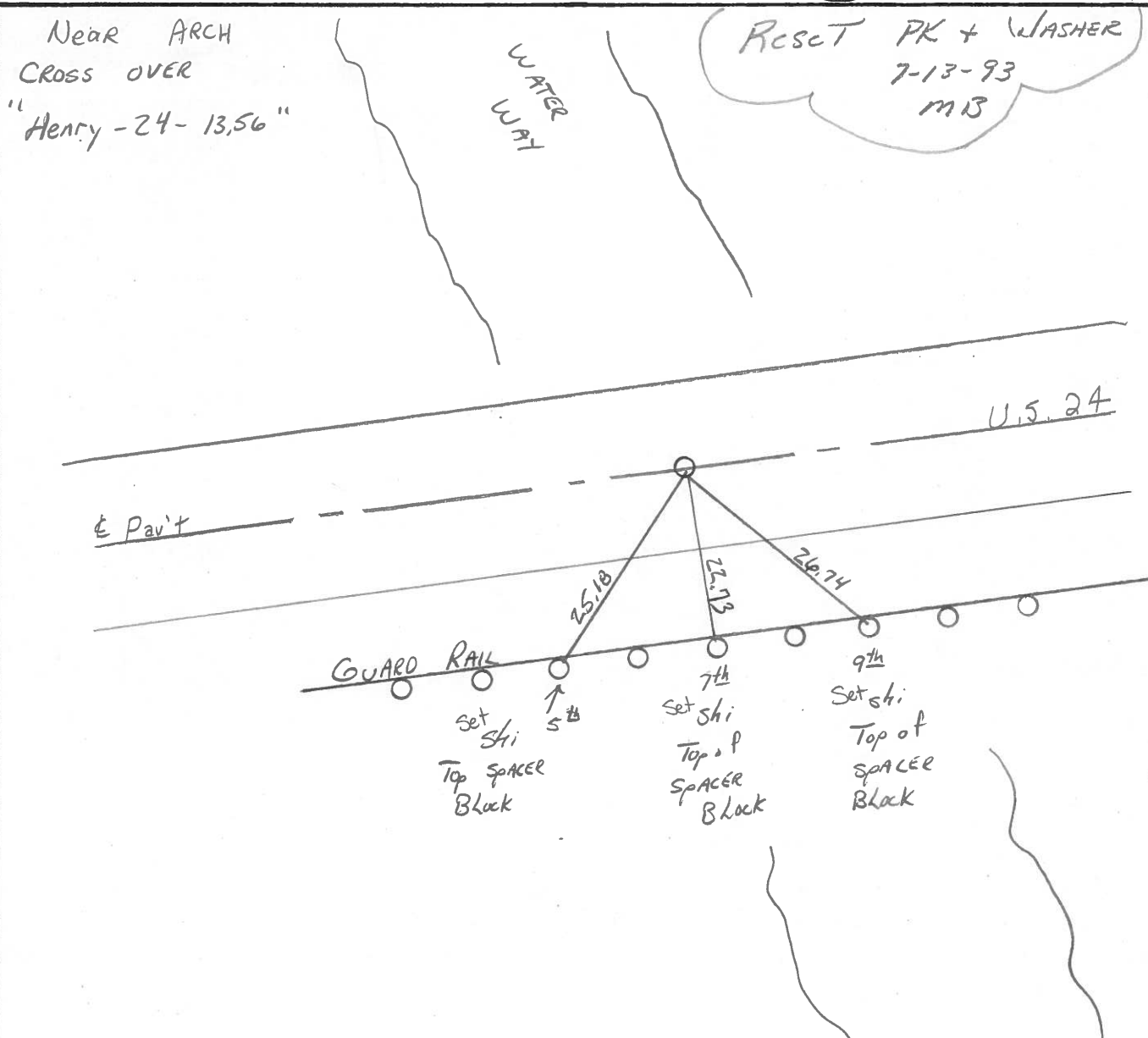
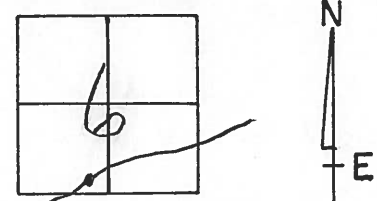
TYPE MONUMENT Sm. R.R. Spike

ON SURFACE - BELOW Yes

LEFT - ☐ PAV'T. - RIGHT Yes

12.4 TO R+ EDGE PAVEMENT

S.L.M. 714+93 13.54



P.C. STA. 921+51.41 Rec.

County HENRY S.R.-U.S. 24

Township WASHINGTON

Section 6

T5N, R8E

Personnel Hoffman

Loehrke

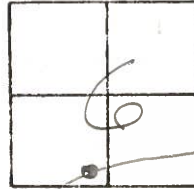
Householder

(24)

Date 6-2-81

Weather OVERCAST

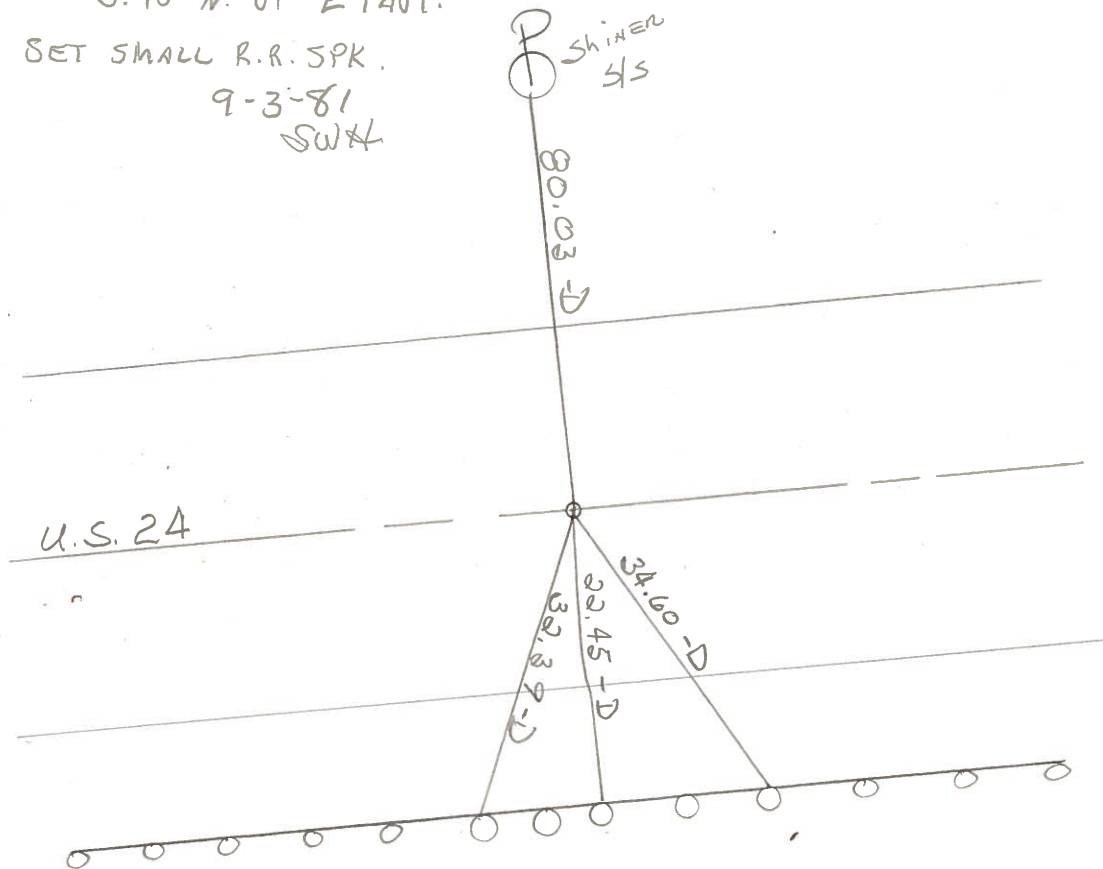
Temp. +72°



Fd. P.K. 3" Below Surface
14.8' to N. Edge PAVT
15.5' to S. Edge PAVT
0.45' N. OF E PAVT.

PROJECT STA ± 911+64

SET SMALL R.R. SPK.
9-3-81
SWH



Steel Guard Rail
BRIDGE No.
HEN-24-1745

P.C. STA. 921+51.41 REC.

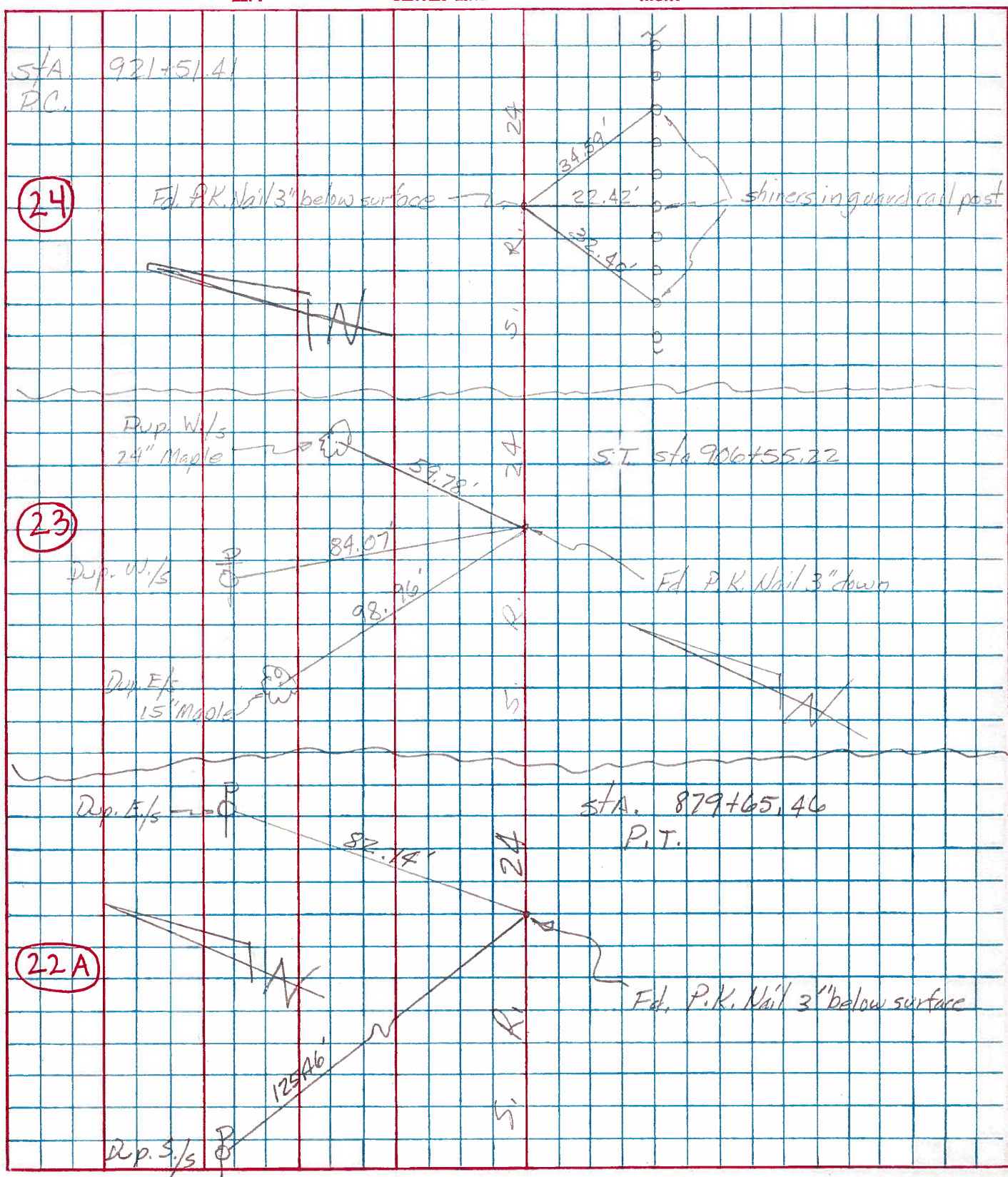
PERSONNEL	TITLE	PERSONNEL	TITLE
Tomsic			
Maxon			
Granata			

COUNTY HEN DATE JUNE 26, 1975

S. R. 24 WEATHER _____

SEC. _____ TEMP. _____

DESCRIPTION _____ LEFT _____ CENTER LINE _____ RIGHT _____ JOB NO. _____



PERSONNEL TITLE PERSONNEL TITLE

Silvester

COUNTY _____ DATE _____

S. R. U.S. 24 WEATHER _____

SEC. _____ TEMP. _____

DESCRIPTION Curve Data witness Ties

LEFT CENTER LINE RIGHT JOB NO. _____

CURVE #

15

P.I. wit { Shiner in Cor. fence Post N.W. 80,
 " " P. Pole N.E. 103.44
 " " T. Pole S.E. 90.65

P.I. Sta 934+48.16
 P.C. 921+57.41
 P.T. 931+43.91

A = 6° 37' RA
 Dc = 0° 40'
 T = 496.75
 L = 992.50
 R = 8594.33
 E = 14.85

P.C. wit. { Iron fence Post N. 2.45
 " " " N. V 57.86
 " " " W. N.W. 73.30

P.T. Shiner in P. Pole N.E. 82.20
 " " " " W. 112.03
 X on N.W. Cor. C Basin S.E. 36.19