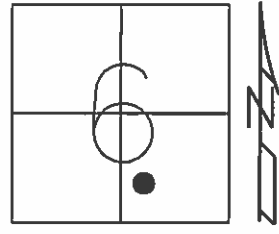


O.D.O.T. DISTRICT 2 SURVEY OFFICE (USE ONLY)

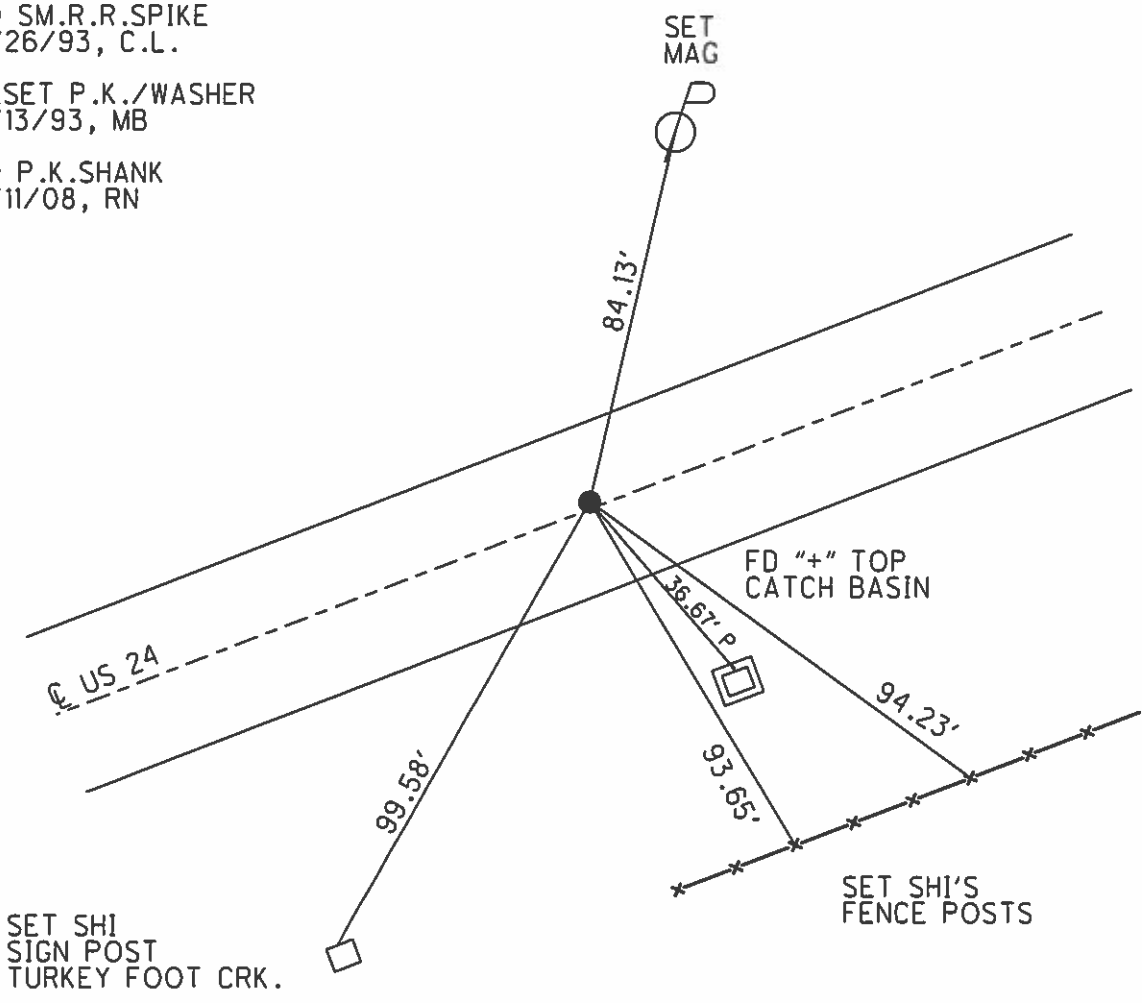
PERSONNEL _____ REFERENCE NO. 26 SHEET 12 OF 40

NOTES NUHFER _____ DATE 7/14/08 ROUTE US 24
 H.C. HUSS WEATHER SUNNY COUNTY HENRY
 R.C. MOSER TEMP. 75° TOWNSHIP WASHINGTON
 _____ SECTION 6
 _____ T 5 N R 8 E

TYPE MONUMENT P.K. SHANK
 ON SURFACE - ~~BELOW~~ ON _____
 LEFT - ☉ PAV'T - ~~RIGHT~~ 1.0'
11.0' TO LT EDGE PAVEMENT
 S.L.M. 724+85
 Grid: Northing: _____ Easting: _____



RECORD: P.T.
 STA.931+43.91
 FD SM.R.R.SPIKE
 5/26/93, C.L.
 RESET P.K./WASHER
 7/13/93, MB
 FD P.K.SHANK
 7/11/08, RN



O.D.O.T. DISTRICT 2 SURVEY OFFICE

PERSONNEL

REFERENCE NO. 26

SHEET 14 OF 40

NOTES LOEHARKE

H.C. BARNHISEL

R.C. CANTERBURY

Newell

DATE 5-26-93

WEATHER Nice

TEMP. 62

ROUTE U.S. 24

COUNTY Henry

TOWNSHIP Washington

SECTION 6

T 5 N R 8 E

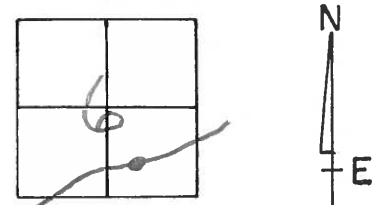
TYPE MONUMENT Sm. R.R. Spike

ON SURFACE - BELOW yes

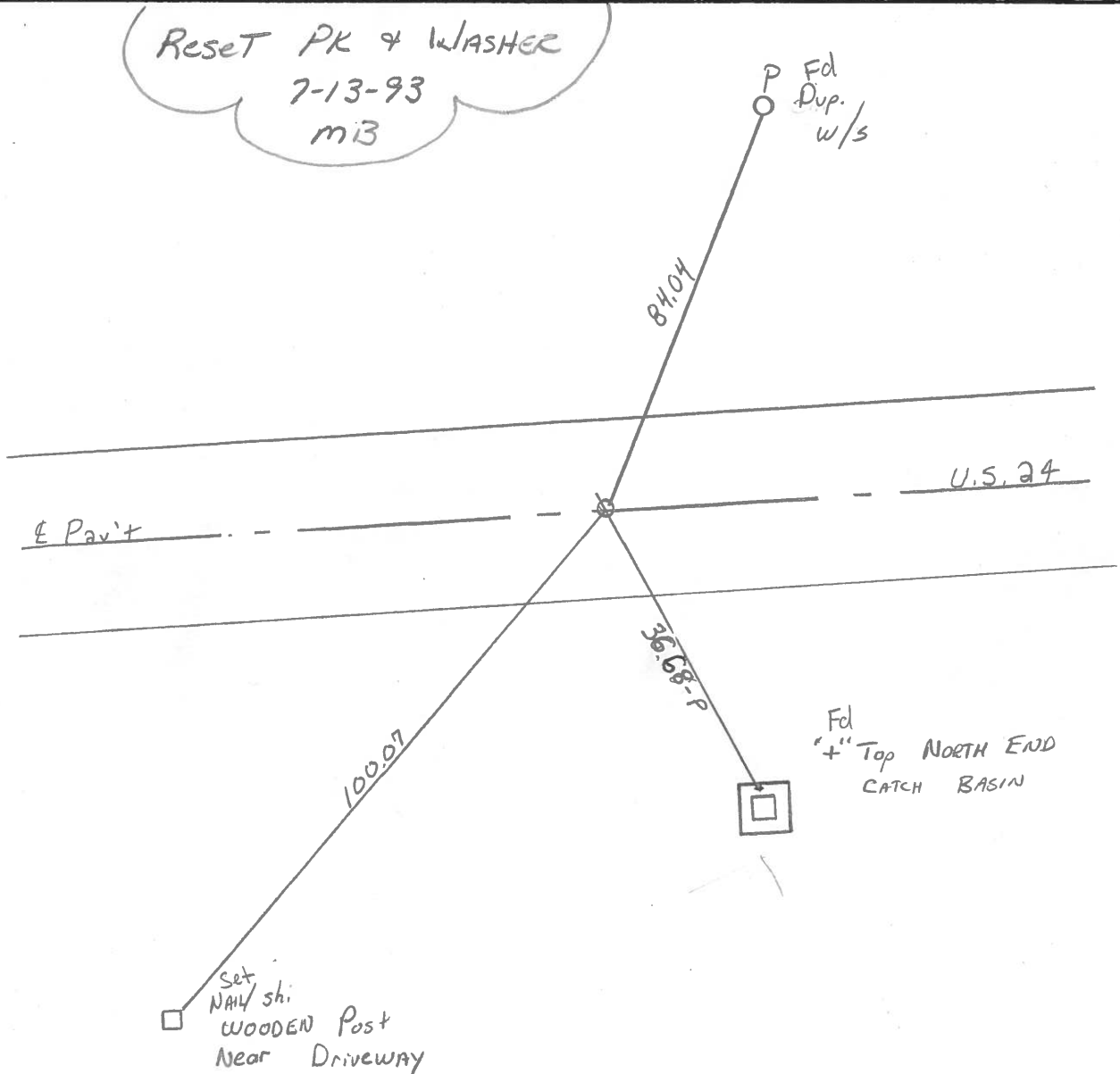
LEFT - ~~X~~ PAV'T. - RIGHT 0.4

12.0 TO Lt EDGE PAVEMENT

S.L.M. 724+85 13.73



Reset PK & WASHER
7-13-93
mib



P.T. STA. 931 + 43.91 Rec.

County HENRY S.R. - U.S. 24

Date 6-2-81

Township WASHINGTON

Weather OVERCAST

Section 6

Temp. +78°

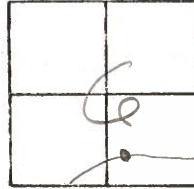
T5N, R8E

Personnel HOFFMAN

Loehrke

House holder

(216)



Fd. P.K. Nail 3" Below Surface PROJECT STA. ± 921+58

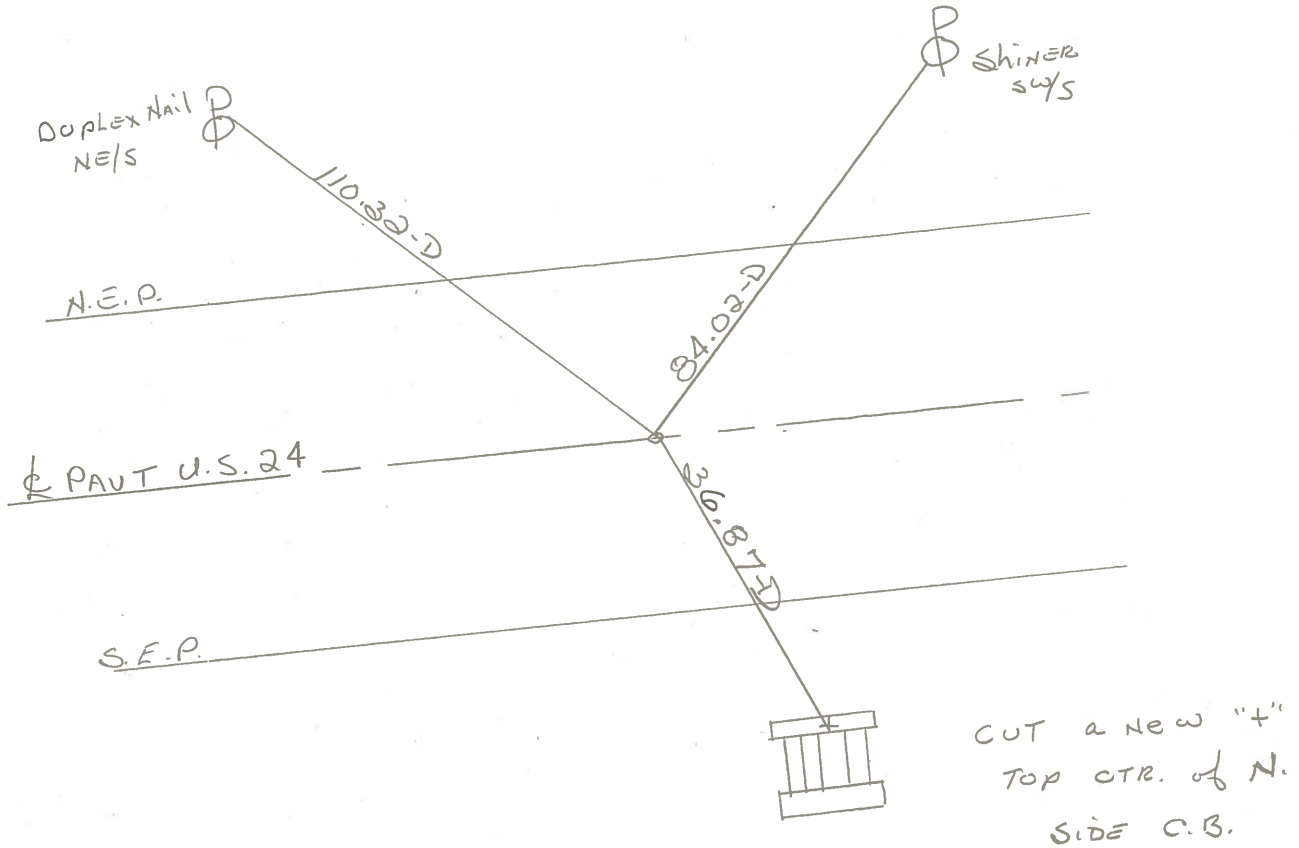
0.3' N. of PAVT.

SET SMALL R.R. SPK.

14.8' To N. E.P.

9-21-81 SWH

15.5' To S. E.P.



P.T. STA. 931+43.91 REC.

PERSONNEL	TITLE	PERSONNEL	TITLE
Tomsic			
Nausser			
Granata			

COUNTY HEN. DATE JUNE 26, 1975

S. R. 24 WEATHER _____

SEC. WASHINGTON TWP TEMP. _____

DESCRIPTION EAST OF S.R. 109 JOB NO. _____

