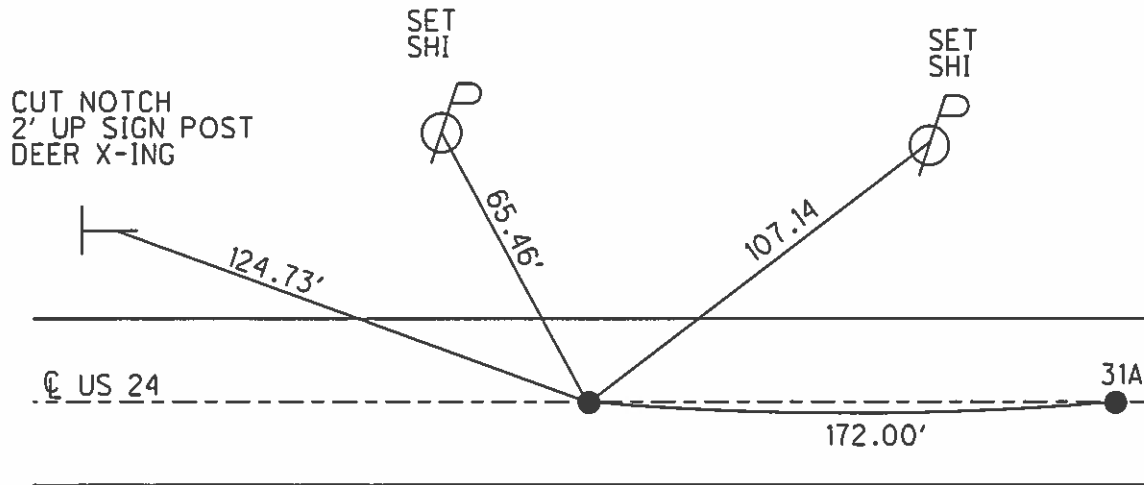
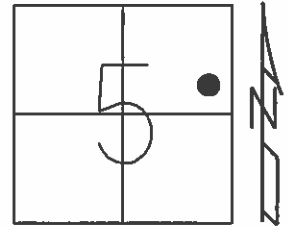


O.D.O.T. DISTRICT 2 SURVEY OFFICE (USE ONLY)

PERSONNEL \_\_\_\_\_ REFERENCE NO. 31 SHEET 17 OF 40  
 NOTES NUHFER DATE 7/14/08 ROUTE US 24  
 H.C. HUSS WEATHER SUNNY COUNTY HENRY  
 R.C. MOSER TEMP. 75° TOWNSHIP WASHINGTON  
 \_\_\_\_\_ SECTION 5  
 \_\_\_\_\_ T 5 N R 8 E

TYPE MONUMENT P.K./WASHER  
 ON SURFACE - ~~BELOW~~ ON  
 LEFT - ☉ PAV'T - RIGHT ON  
11.8' TO LT EDGE PAVEMENT  
 S.L.M. 816+50  
 Grid: Northing: - Easting: -



RECORD: P.T.  
 STA. 1023+10.10

FD SM.R.R.SPIKE  
 5/27/93, C.L.

SET P.K./WASHER  
 8/12/93, C.L.

FD P.K./WASHER  
 7/11/08, RN

# O.D.O.T. DISTRICT 2 SURVEY OFFICE

PERSONNEL

REFERENCE NO. 31

SHEET 19 OF 40

NOTES LOEHRKE

H.C. BARNHISEL

R.C. CANTERBURY

Newell

DATE 5-27-93

WEATHER Pt Cloudy

TEMP. +58

ROUTE U.S. 24

COUNTY Henry

TOWNSHIP Washington

SECTION 5

T. 5 N. R. 8 E

Set P.K./WASHER

8-12-93

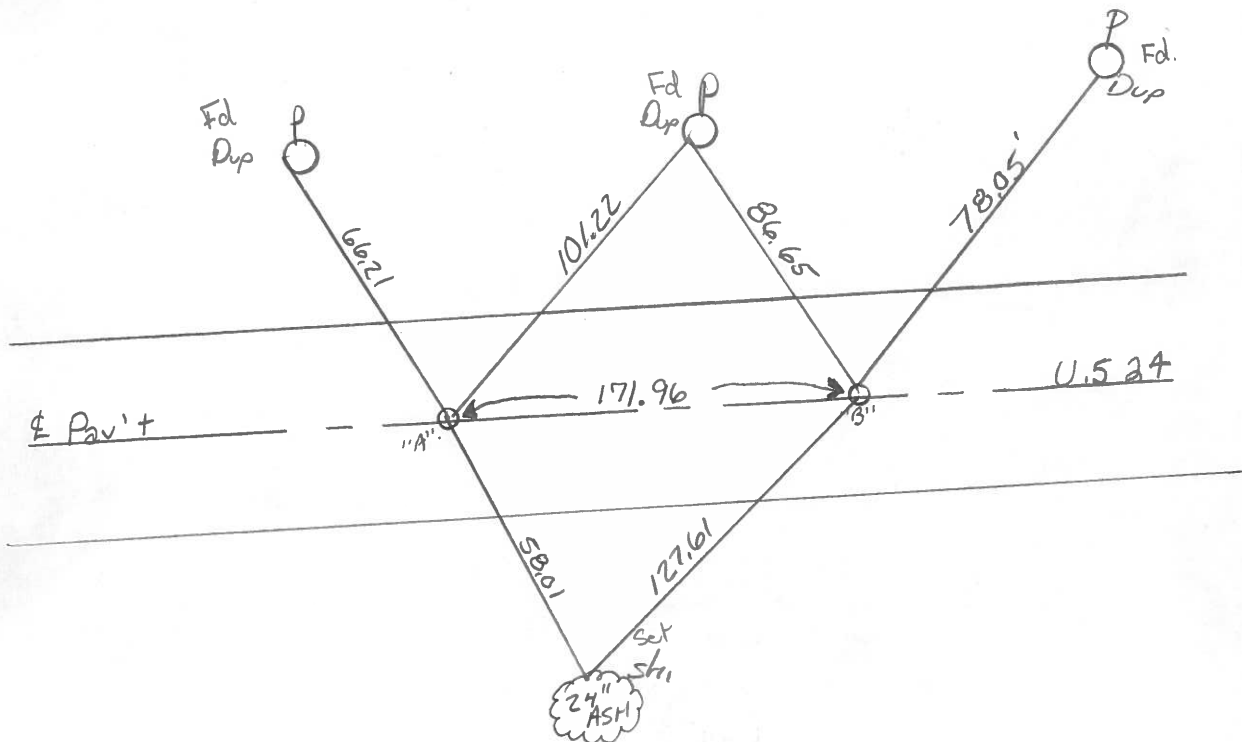
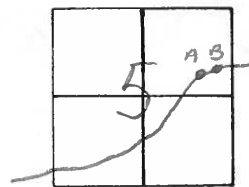
TYPE MONUMENT Sm. R.R. Spikes

ON SURFACE - BELOW Yes

~~LEFT~~ - C PAV'T. - RIGHT ~~Yes~~ 1.3 Lt

11.8 TO Rt EDGE PAVEMENT

S.L.M. 816 +50 818 818 +21 15.46



Pt "A" = P.T. STA. 1023+10.10 Rec.

Pt "B" = P.C. STA. 1024+82.10 Rec

County HERY S.R. U.S. 24

Date 6-3-81

Township Washington

Weather OVERCAST

Section 5

Temp. +60°

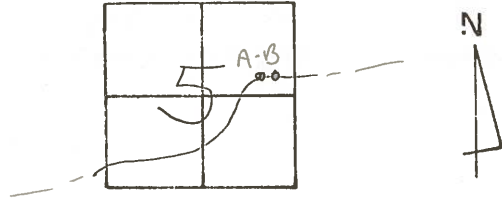
T5N, R8E

Personnel Hoffman

Loehrke

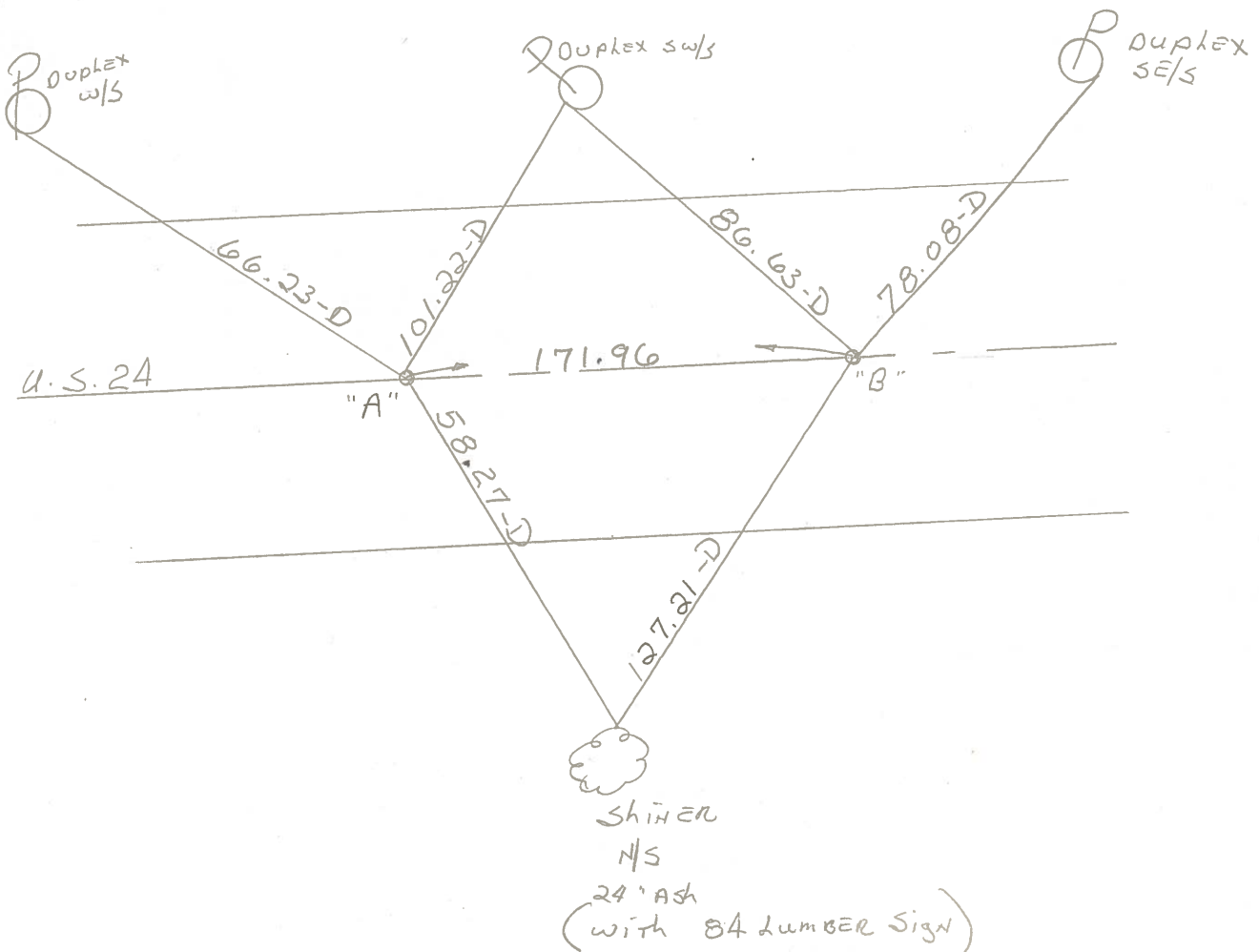
Householder

31



PT. "A" Fd. P.K. 3" Below Surface @ CTR. of PAVT. - PROJECT STA ± 1013+25  
 0.30' S. OF  $\Phi$  15.3 TO N. E.P. 15.0 TO S. E.P. SET SMALL R.R. SPK. 9-21-81

PT. "B" Fd. P.K. 3" Below Surface @ CTR. of PAVT. - PROJECT STA ± 1014+97 SWH  
 0.35' S. OF  $\Phi$  15.5 TO N. E.P. / 14.5 TO S E.P.  
 SET SMALL R.R. SPK. 9-21-81 SWH

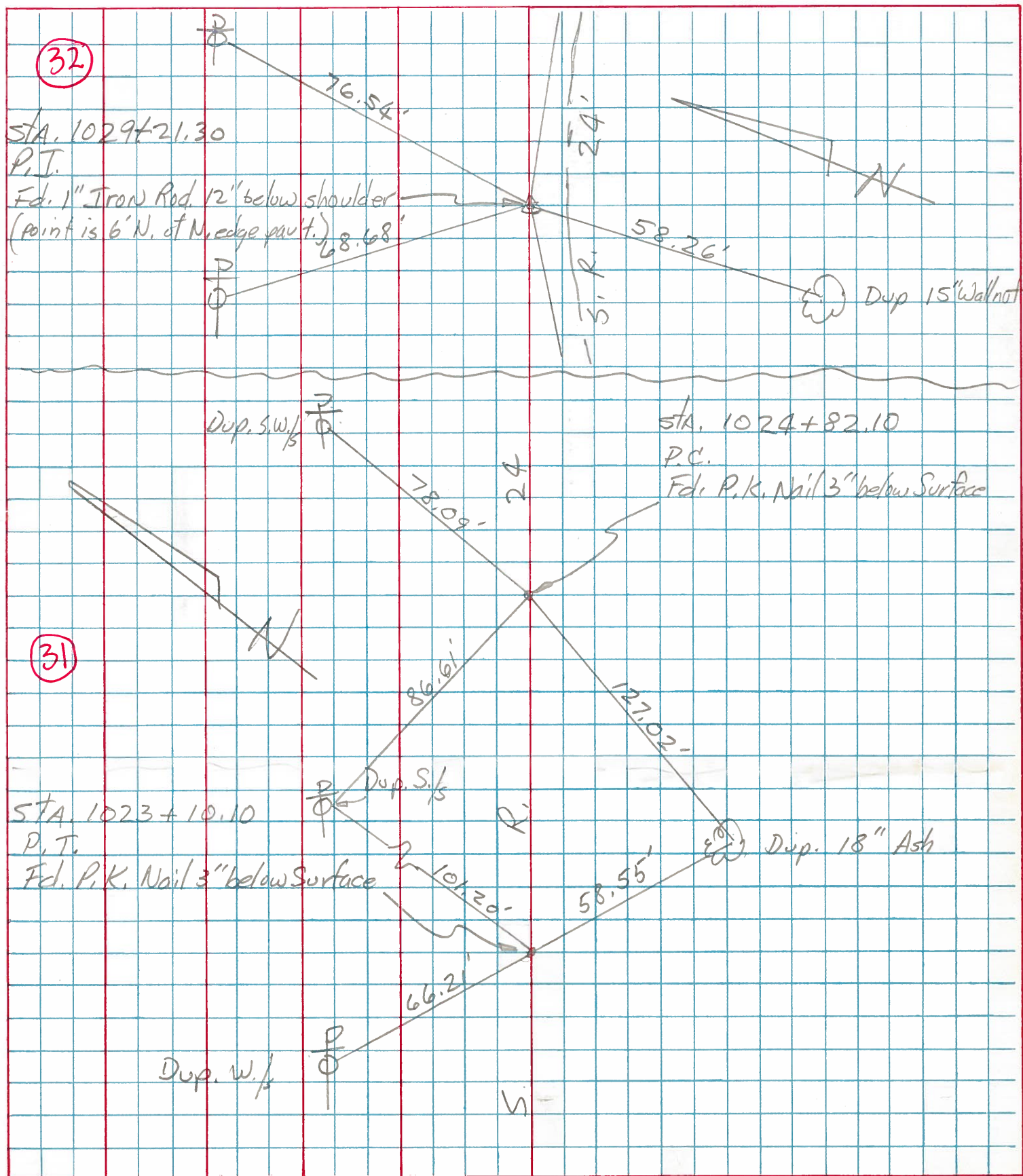


PT. "A" = P.T. STA. 1023+10.10 REC.

PT. "B" = P.C. STA. 1024+82.10 REC.

PERSONNEL	TITLE	PERSONNEL	TITLE	COUNTY	DATE	S. R.	WEATHER	SEC.	TEMP.
Tomsic				HEN.	July 1, 1975	24			
Granata									

DESCRIPTION \_\_\_\_\_ LEFT \_\_\_\_\_ CENTER LINE \_\_\_\_\_ RIGHT \_\_\_\_\_ JOB NO. \_\_\_\_\_





PERSONNEL TITLE PERSONNEL TITLE  
 Beach \_\_\_\_\_  
 Ruffer \_\_\_\_\_  
 Knape \_\_\_\_\_  
 Delventhal \_\_\_\_\_

COUNTY Henry DATE 30 Apr. '59  
 S. R. US-24 WEATHER \_\_\_\_\_  
 SEC. 11.22 TEMP. \_\_\_\_\_

DESCRIPTION Constr. JOB NO. \_\_\_\_\_

