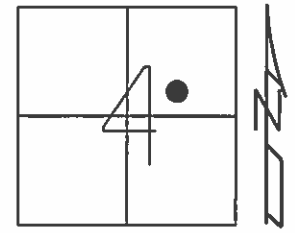


O.D.O.T. DISTRICT 2 SURVEY OFFICE (USE ONLY)

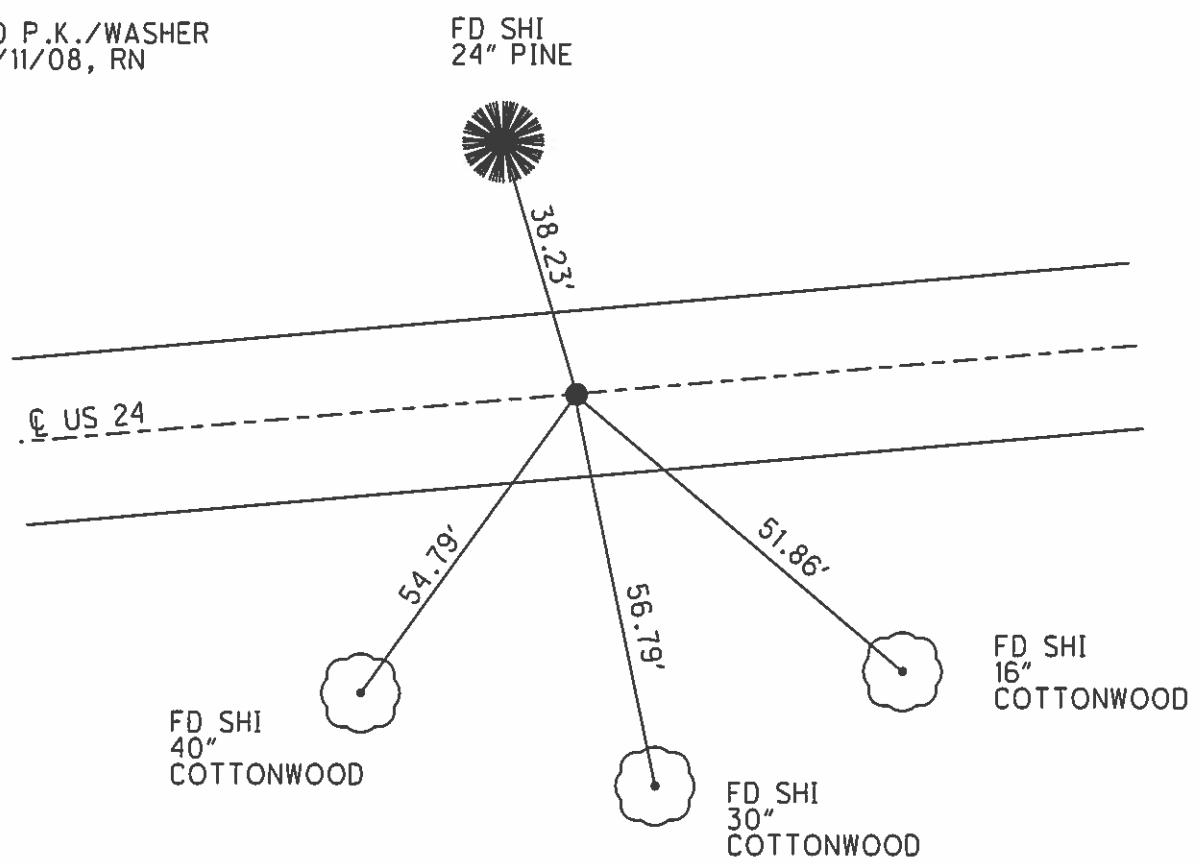
PERSONNEL \_\_\_\_\_ REFERENCE NO. 35 SHEET 22 OF 40  
 NOTES NUHFER DATE 7/14/08 ROUTE US 24  
 H.C. HUSS WEATHER SUNNY COUNTY HENRY  
 R.C. MOSER TEMP. 75° TOWNSHIP WASHINGTON  
 SECTION 4  
 T 5 N R 8 E

TYPE MONUMENT P.K./WASHER  
 ON SURFACE - ~~BELOW~~ ON \_\_\_\_\_  
~~LEFT~~ - Q PAV'T - RIGHT 0.5'  
10.7' TO RT EDGE PAVEMENT  
 S.L.M. 843+64



Grid: Northing: \_\_\_\_\_ Easting: \_\_\_\_\_

RECORD: P.T.  
 STA. 1050+23.12  
 FD SM.R.R.SPIKE  
 5/27/93, C.L.  
 SET P.K./WASHER  
 9/17/93, C.L.  
 FD P.K./WASHER  
 7/11/08, RN



# O.D.O.T. DISTRICT 2 SURVEY OFFICE

PERSONNEL

REFERENCE NO. 35

SHEET 23 OF 40

NOTES LOHRKE

H.C. BARNHISEL

R.C. CANTERBURY

Newell

DATE 5-27-93

WEATHER Cloudy

TEMP. +60

ROUTE U.S. 24

COUNTY Henry

TOWNSHIP Washington

SECTION 4 - In Texas

T. 5 N R. 8 E

Set PK./WASHER  
9-17-93  
C.L.

TYPE MONUMENT Sm. RR Spike

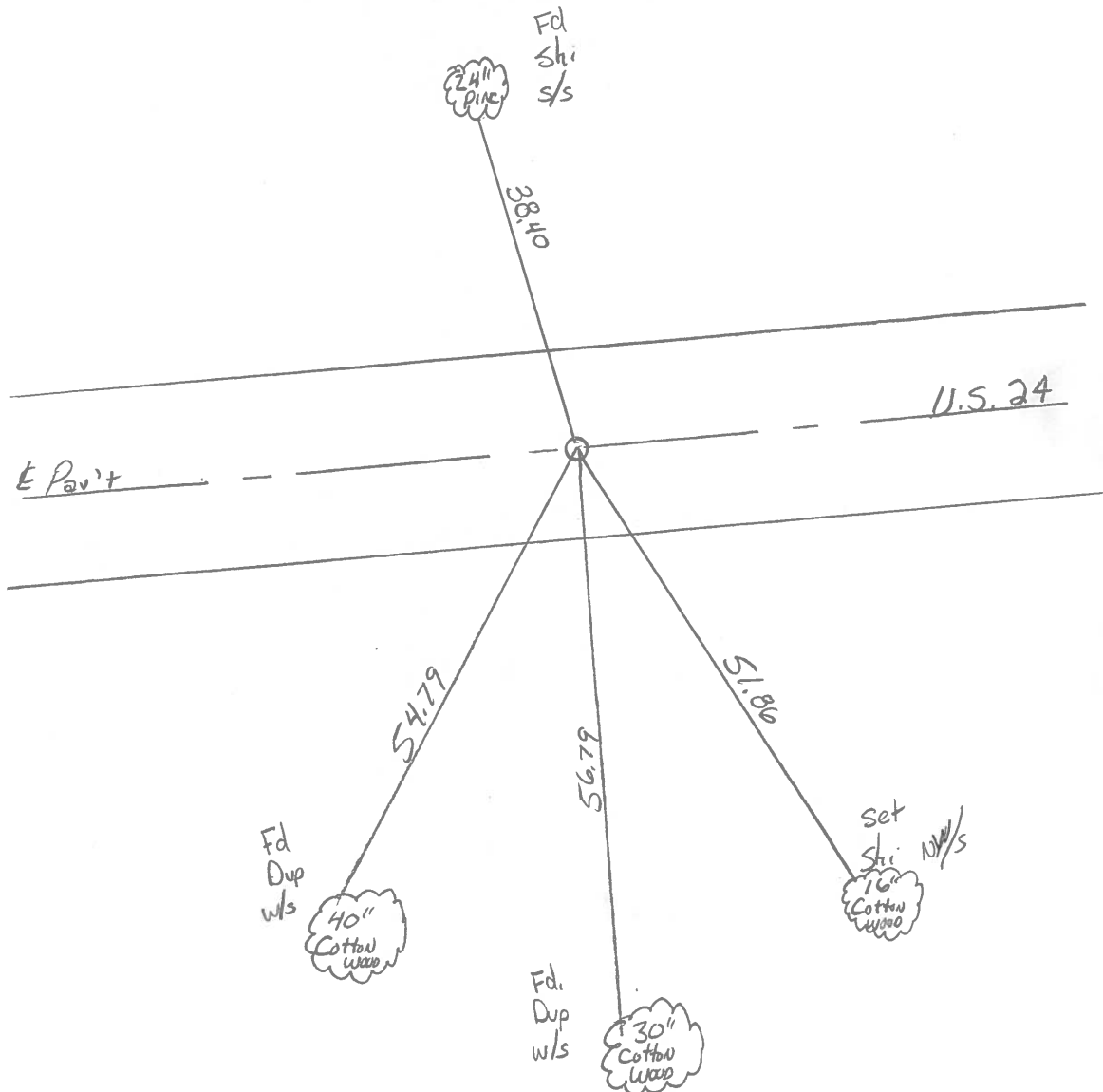
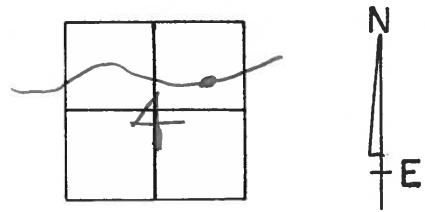
ON SURFACE - ~~BELOW~~ yes

~~LEFT~~ - ~~PAV'T.~~ - RIGHT 0.5'

164 TO Rt EDGE PAVEMENT

S.L.M. 843+64

15.98



P.T. STA. 1050 + 23.12 Rec.

County HENRY S.R.-U.S. 24

Date 6-3-81

Township WASHINGTON

Weather OVERCAST

Section 4 - IN TEXAS

Temp. +65°

TSN, R&E

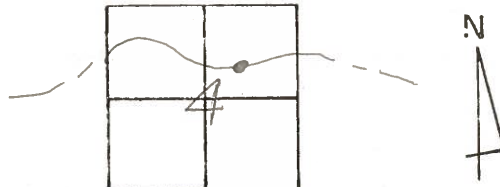
Personnel HOFFMAN

Loehrke

Householder

\_\_\_\_\_

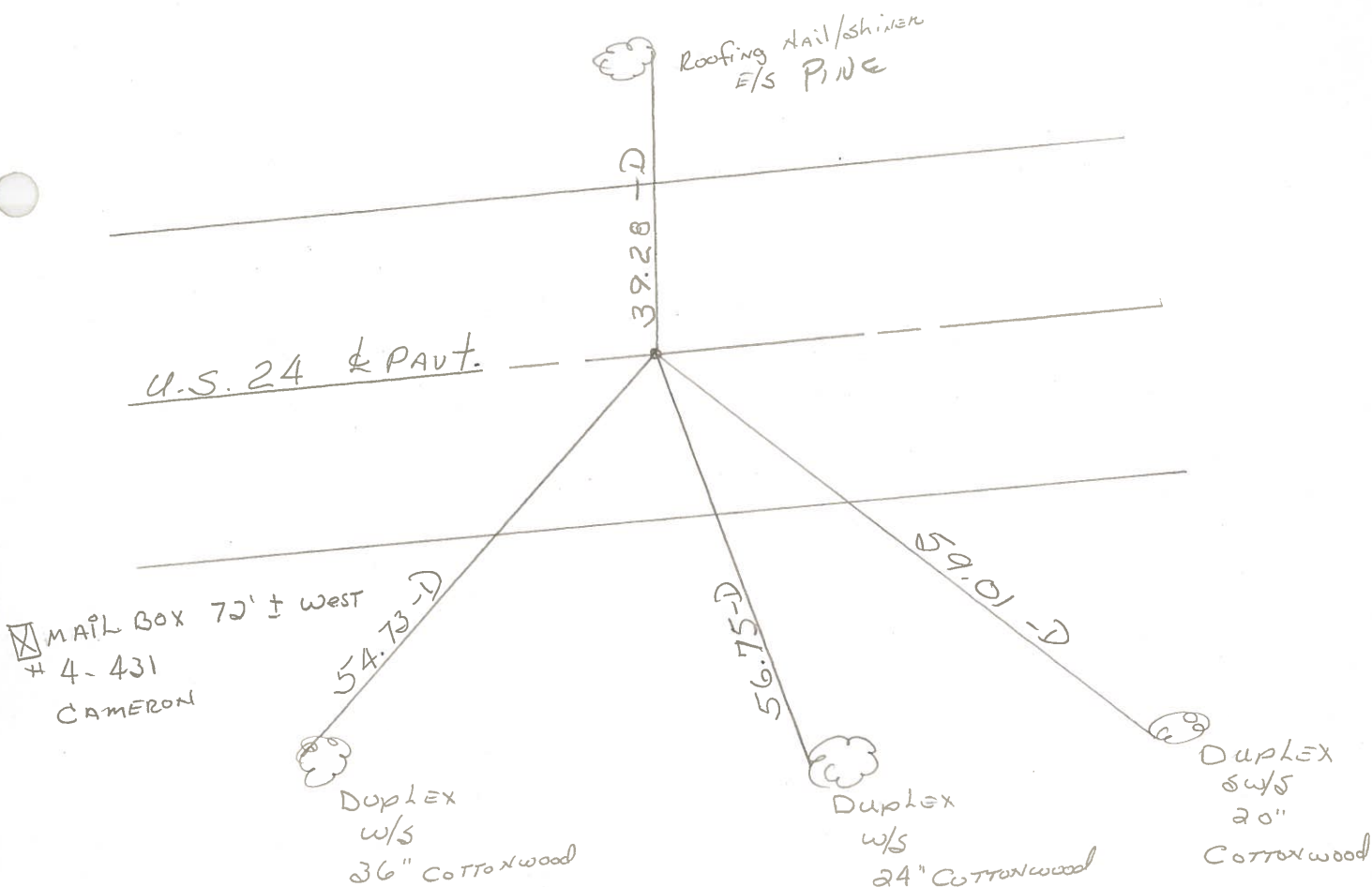
\_\_\_\_\_



34  
35

Fd. P.K. 3" Below Surface PROJECT STA. ± 1040+37  
@ CTR. of PAVT.

SET SMALL R.R. SPK.  
9-17-81 SWH

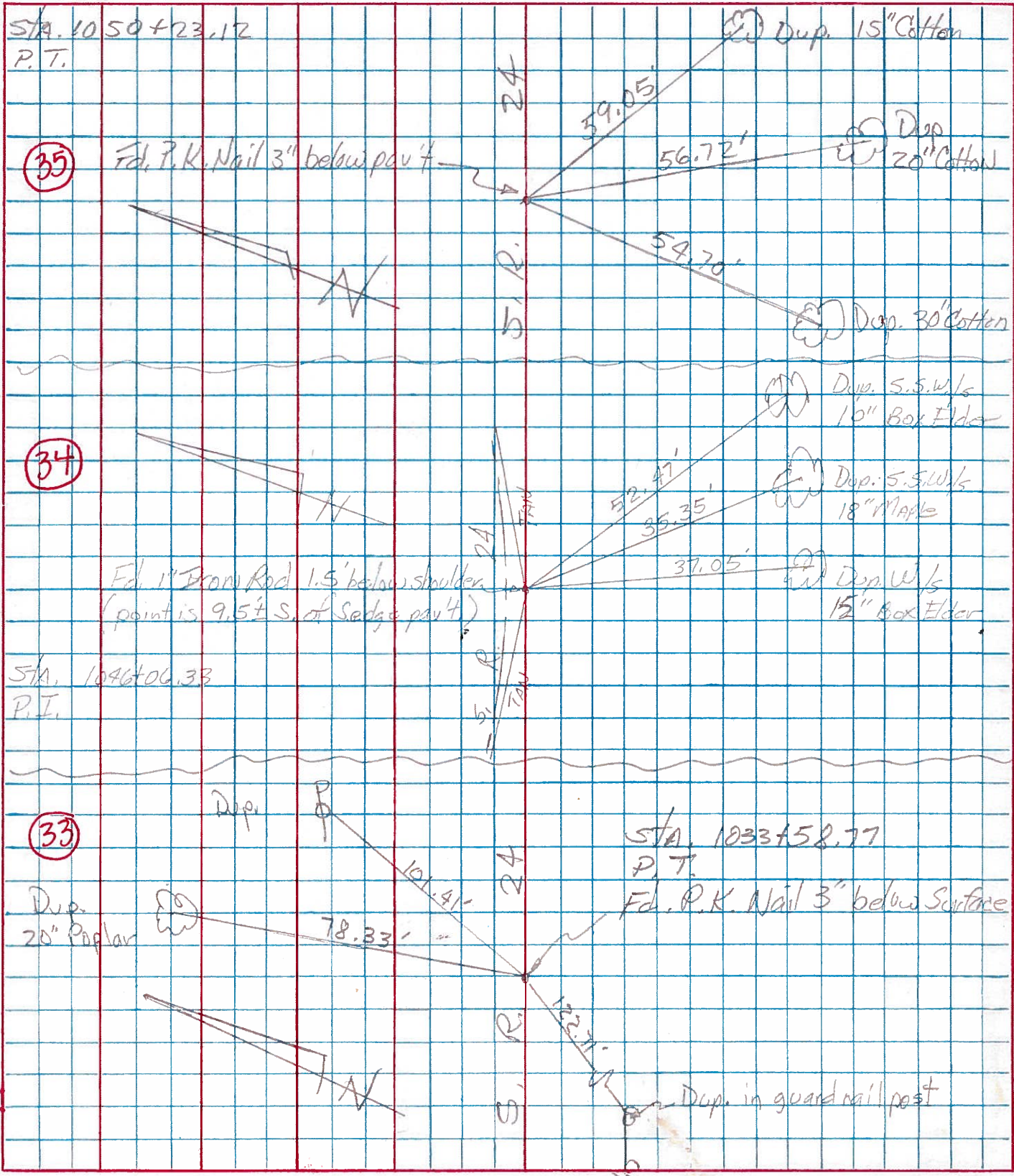


P.T. STA. 1050+23.12 REC.

PERSONNEL	TITLE	PERSONNEL	TITLE
Tomsic			
Granata			

COUNTY ALLEN DATE JULY 2, 1925  
 S. R. 24 WEATHER \_\_\_\_\_  
 SEC. \_\_\_\_\_ TEMP. \_\_\_\_\_

DESCRIPTION LEFT CENTER LINE RIGHT JOB NO.





PERSONNEL	TITLE	PERSONNEL	TITLE	COUNTY	DATE
Beach				Henry	1 May 59
Ruffer				US-24	
Knape					
Delventhal				11.22	

DESCRIPTION ± constr. JOB NO. \_\_\_\_\_

