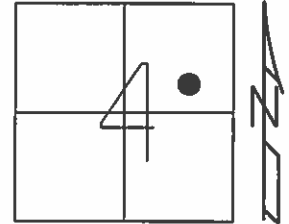


O.D.O.T. DISTRICT 2 SURVEY OFFICE (USE ONLY)

PERSONNEL _____ REFERENCE NO. 36 SHEET 23 OF 40
 NOTES NUHFER DATE 7/14/08 ROUTE US 24
 H.C. HUSS WEATHER SUNNY COUNTY HENRY
 R.C. MOSER TEMP. 75° TOWNSHIP WASHINGTON
 _____ SECTION 4
 _____ T 5 N R 8 E

TYPE MONUMENT P.K./WASHER
 ON SURFACE - BELOW ON
 LEFT - ☉ PAV'T - RIGHT 1.6'
10.6' TO LT EDGE PAVEMENT
 S.L.M. 847+21



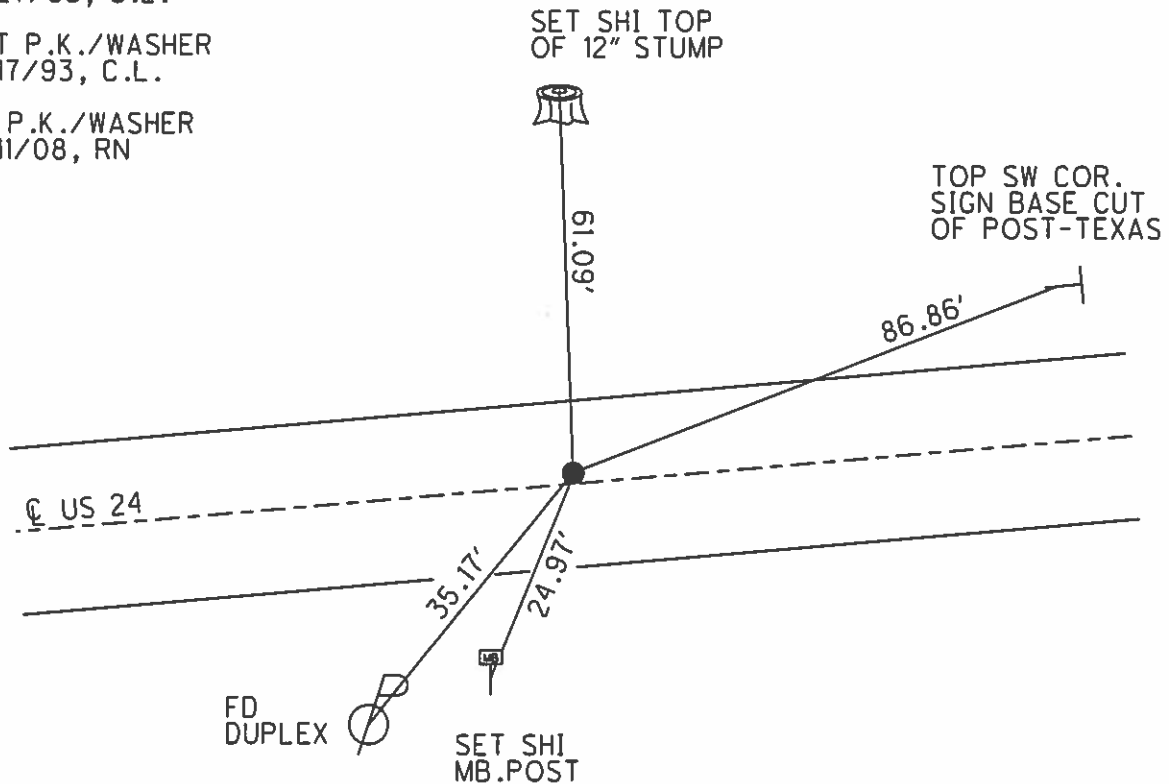
Grid: Northing: _____ Easting: _____

RECORD: T.S.
 STA.1053+78.66

FD BOAT SPIKE
 5/27/93, C.L.

SET P.K./WASHER
 9/17/93, C.L.

FD P.K./WASHER
 7/11/08, RN



O.D.O.T. DISTRICT 2 SURVEY OFFICE

PERSONNEL

REFERENCE NO. 36

SHEET 24 OF 40

NOTES LOEHRKE

H.C. BARNHISEL

R.C. CANTERBURY

Newell

DATE 5-27-93

WEATHER Cloudy

TEMP. +62

Set PK/WASHER
9-17-93

ROUTE U.S. 24

COUNTY Henry

TOWNSHIP Washington

SECTION 4

T 5 N R 8 E

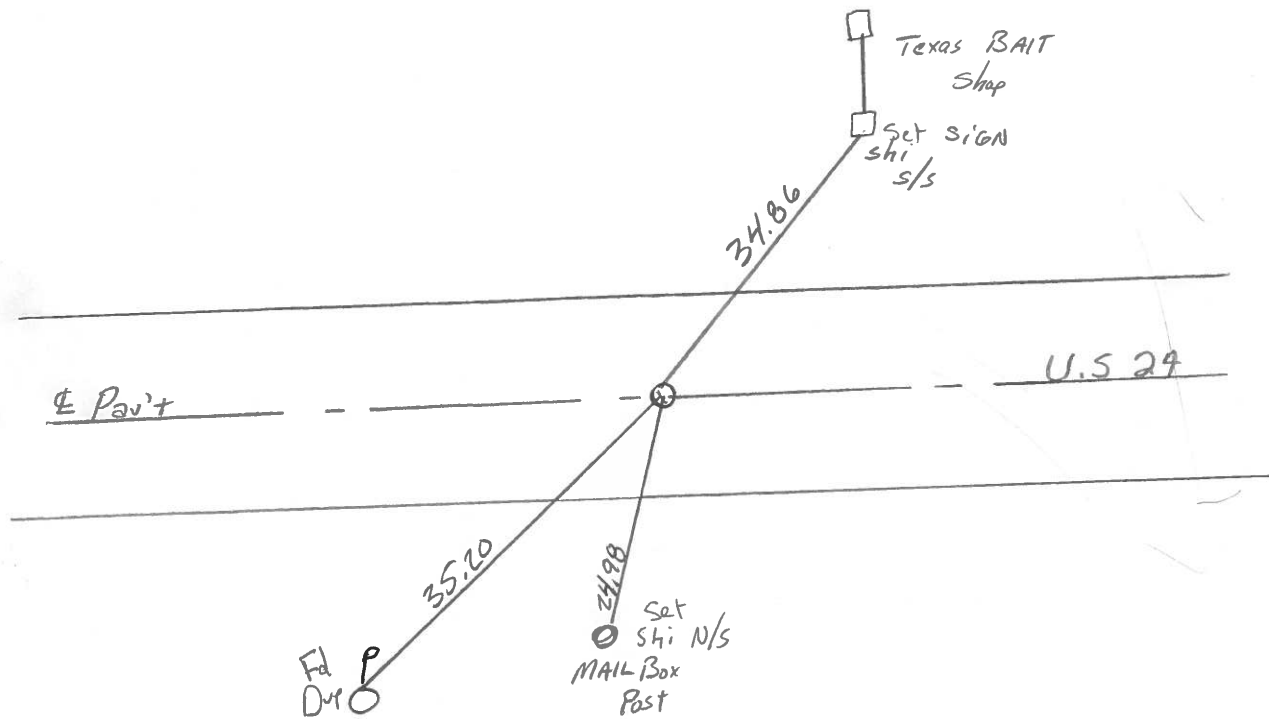
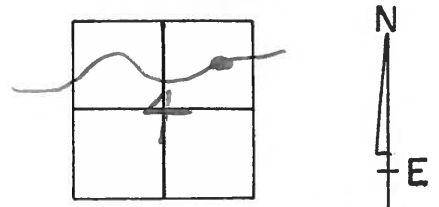
TYPE MONUMENT BOAT Spike

ON SURFACE - BELOW Yes

LEFT-~~Y~~ PAV'T. - RIGHT 1.6

10.6 TO Lt EDGE PAVEMENT

S.L.M. 847+21 16.05



T.S. STA. 1053+78.66 Rec.

County HENRY S.R.-U.S. 24

Date 6-3-81

Township WASHINGTON

Weather OVERCAST

Section 4

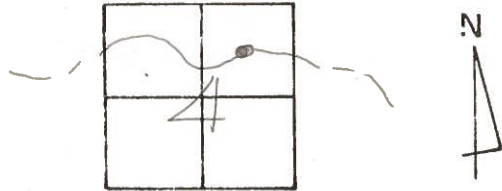
Temp. +70°

T5N, R8E

Personnel HOFFMAN

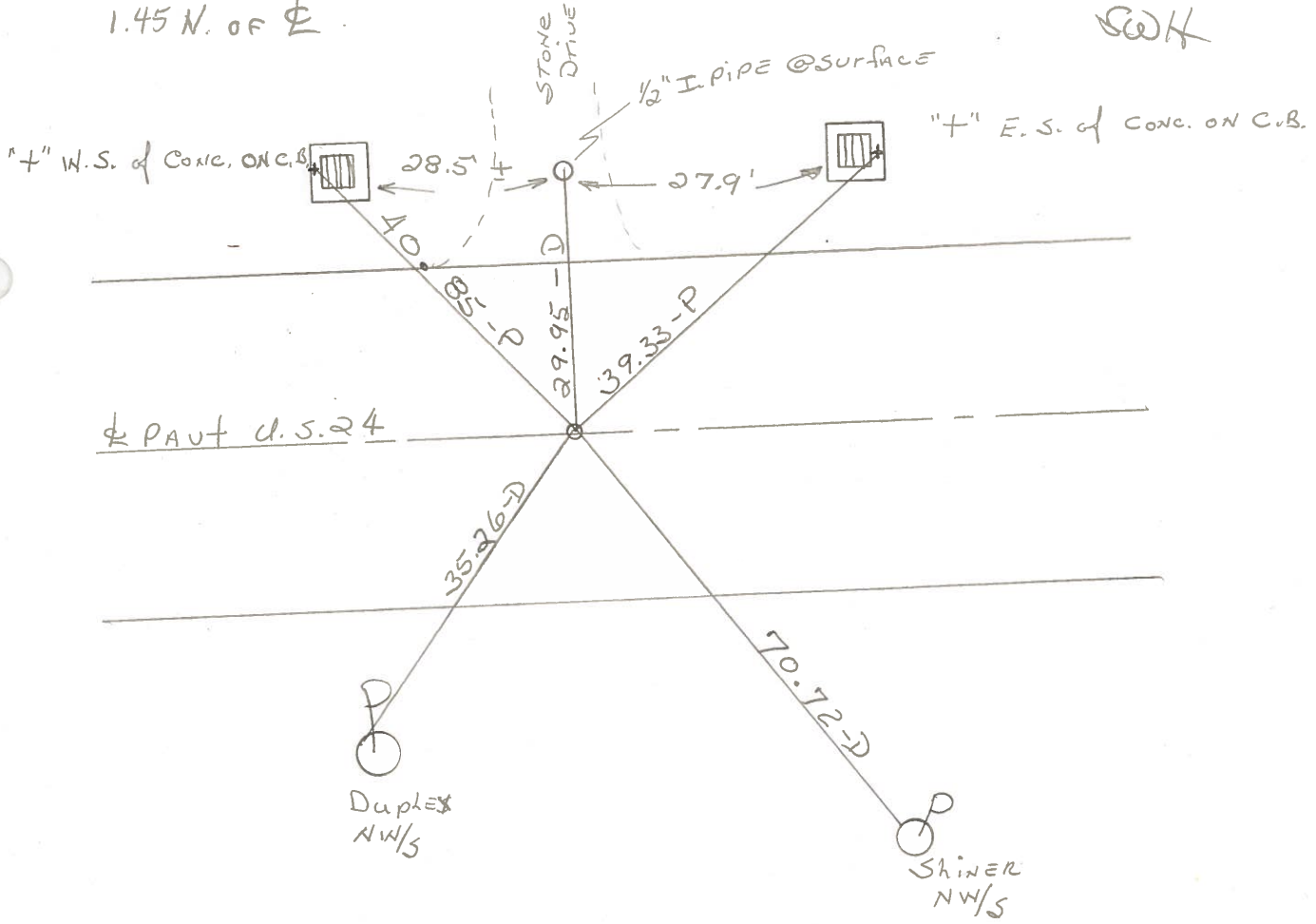
Loehrke

Householder



Fd. P.K. 3" Below Surface
18.6' to N. Edge PAUT
16.7' to S. Edge PAUT.
1.45 N. of Φ

PROJECT STA. \pm 1043+93
SET 3" BOAT SPR/WASHER
9-17-81
SWH

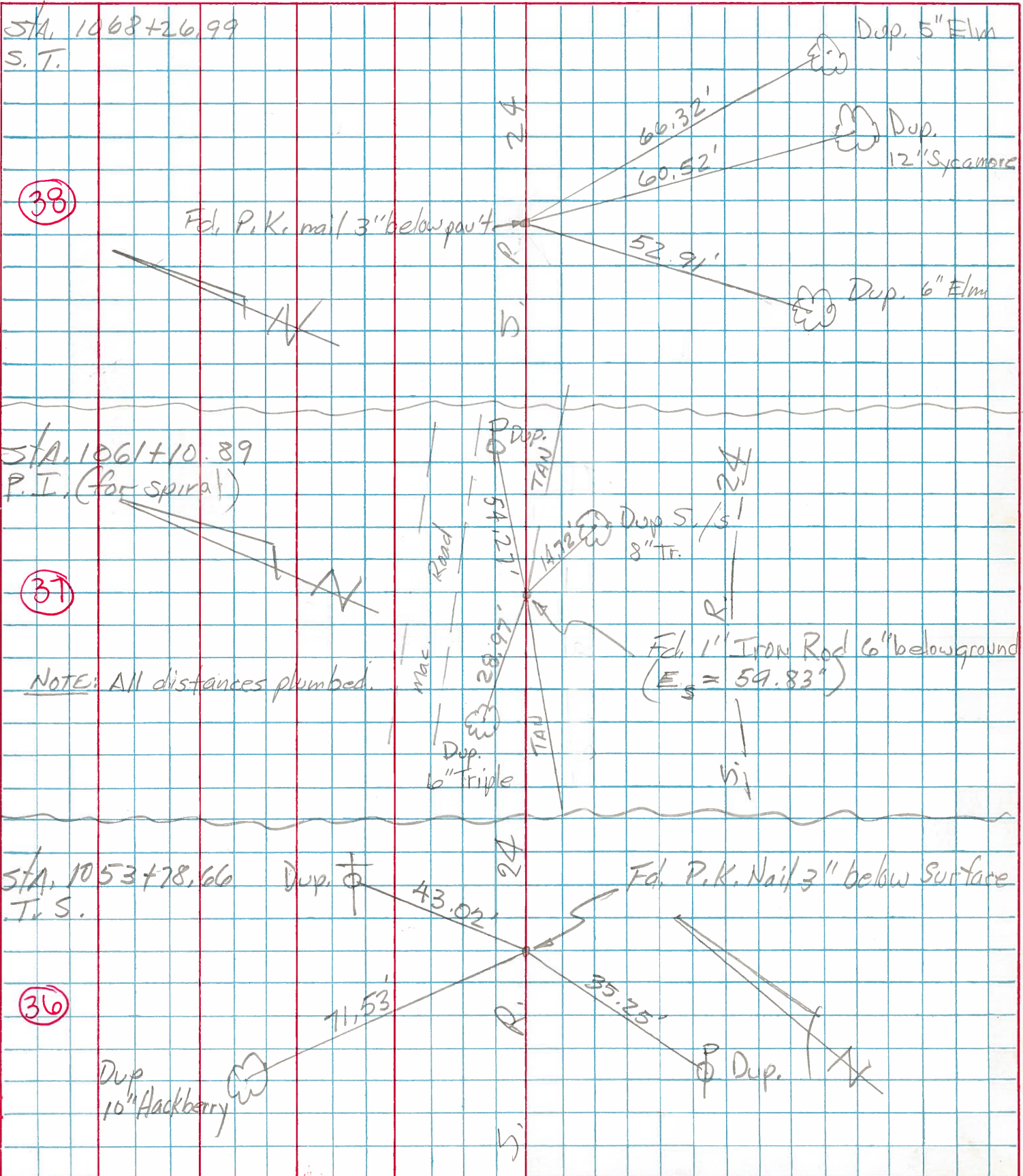


T.S. STA. 1053 + 78.66 REC.

| PERSONNEL | TITLE | PERSONNEL | TITLE |
|-----------|-------|-----------|-------|
| Tomask | | | |
| Neuser | | | |
| Granata | | | |

COUNTY HEN. DATE July 6, 1975
 S. R. 24 WEATHER _____
 SEC. _____ TEMP. _____

DESCRIPTION LEFT CENTER LINE RIGHT JOB NO.



| PERSONNEL | TITLE | PERSONNEL | TITLE | COUNTY | DATE | WEATHER | TEMP. |
|------------|-------|-----------|-------|------------|----------|---------|-------|
| Beach | | | | Henry | 1 May 59 | | |
| Ruffer | | | | US-24 | | | |
| Knape | | | | | | | |
| Delventhal | | | | SEC. 11.22 | | | |

DESCRIPTION ± constr. JOB NO. _____

