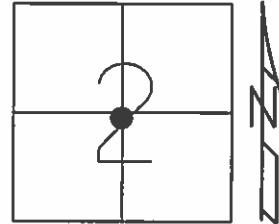


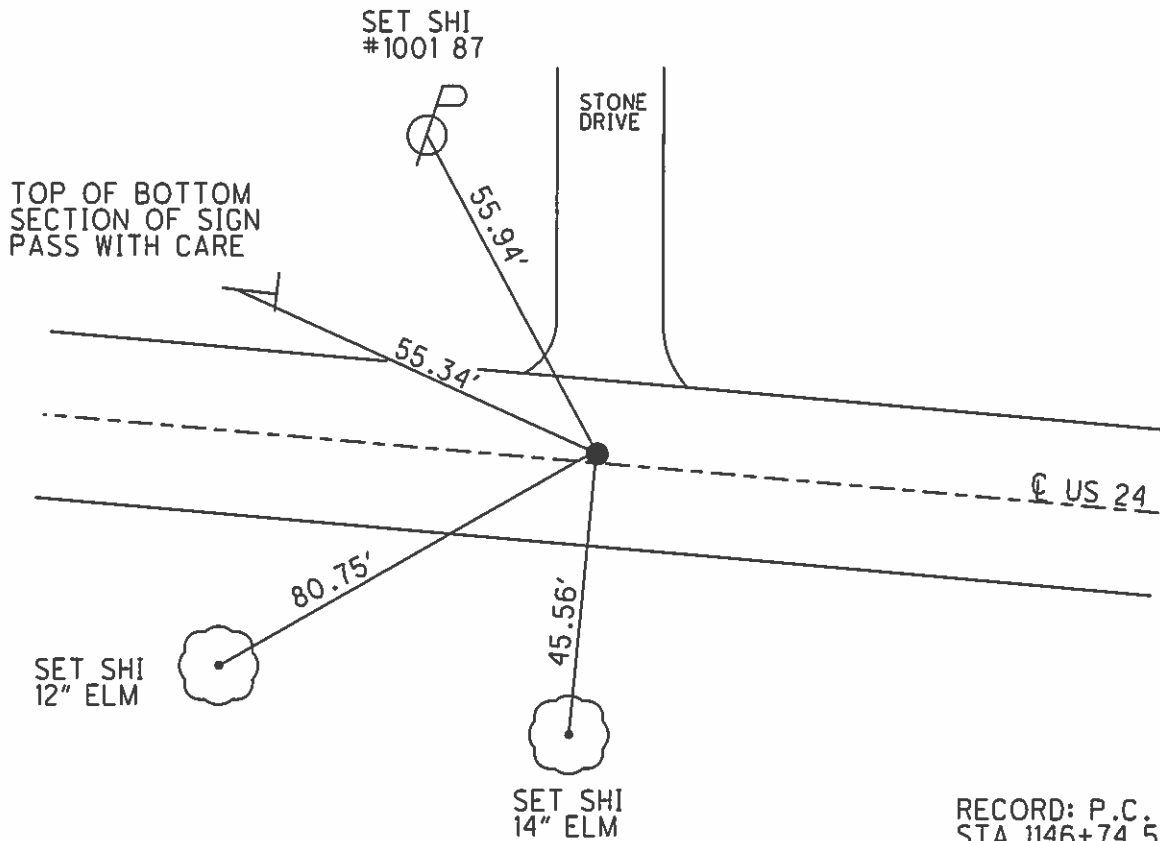
O.D.O.T. DISTRICT 2 SURVEY OFFICE (USE ONLY)

PERSONNEL _____ REFERENCE NO. 43 SHEET 30 OF 40
 NOTES HUSS DATE 7/24/08 ROUTE US 24
 H.C. MOSER WEATHER SUNNY COUNTY HENRY
 R.C. CANTERBURY TEMP. 82° TOWNSHIP WASHINGTON
 _____ SECTION 2
 _____ T 5 N R 8 E

TYPE MONUMENT P.K./WASHER
 ON SURFACE - ~~BELOW~~ ON
~~LEFT~~ - ℄ PAV'T - RIGHT 0.4'
12.6' TO RT EDGE PAVEMENT
 S.L.M. 940+08



Grid: Northing: _____ Easting: _____



RECORD: P.C.
 STA. 1146+74.53

FD SM.R.R.SPIKE
 5/27/93, C.L.

SET P.K./WASHER
 9/17/93, C.L.

O.D.O.T. DISTRICT 2 SURVEY OFFICE

PERSONNEL

REFERENCE NO. 43

SHEET 29 OF 40

NOTES LOHRKE

H.C. BARNHISEL

R.C. CANTERBURY

Newell

DATE 5-27-93

WEATHER Cloudy

TEMP. +70

Set PK. / W ASHER
9-17-93

ROUTE U.S. 24

COUNTY Henry

TOWNSHIP Washington

SECTION 2

T 5 N R 8 E

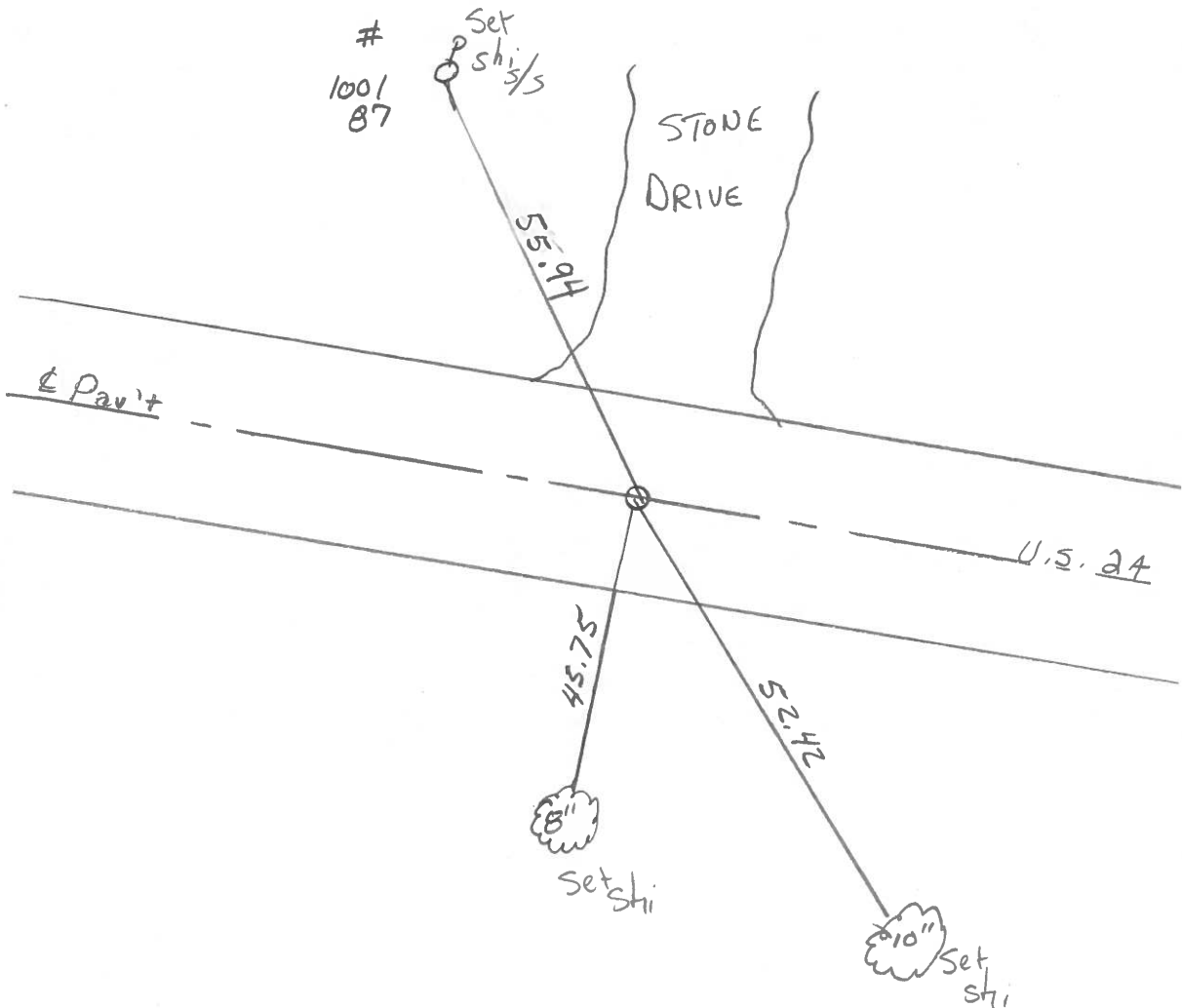
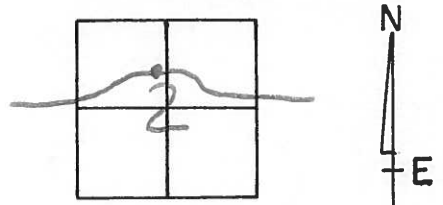
TYPE MONUMENT Sm. RR. Spike

ON SURFACE - BELOW Yes

LEFT - & PAV'T. - RIGHT Yes

12.4 TO Rt EDGE PAVEMENT

S.L.M. 940 + 08 17.80



P.C. STA. 1146 + 74.53

County HENRY S.R.-U.S.24

Date 6-3-81

Township WASHINGTON

Weather cloudy

Section 2

Temp. +78°

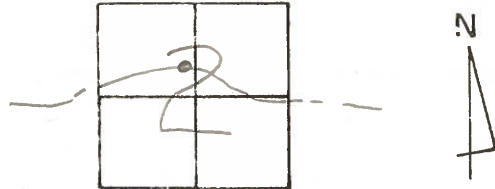
T5N, R8E

Personnel Hoffman

Loehrke

Householder

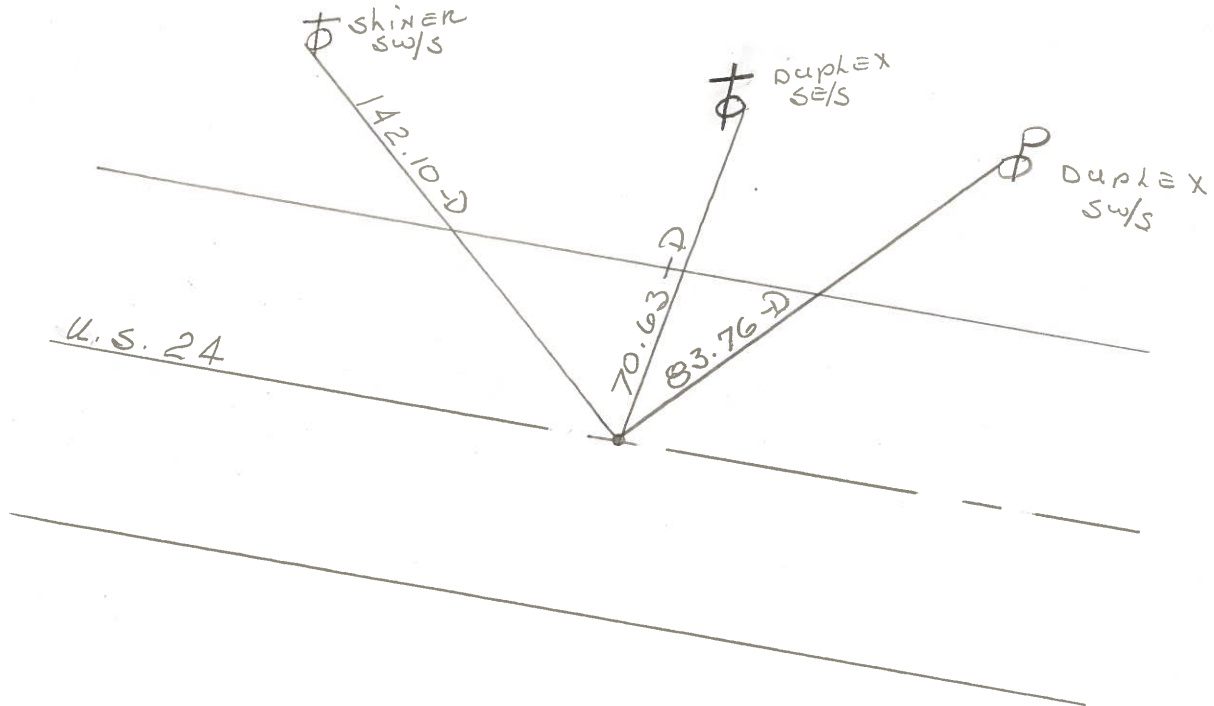
43



Fd. P.K. 3" Below surface PROJECT STA ± 1136+88
@ ctr of PAVT.

SET SMALL R.R. SPR. 9-21-81
SWH

(Just west of rd. 2-B)
±700'



P.C. STA. 1146+74.53 REC.

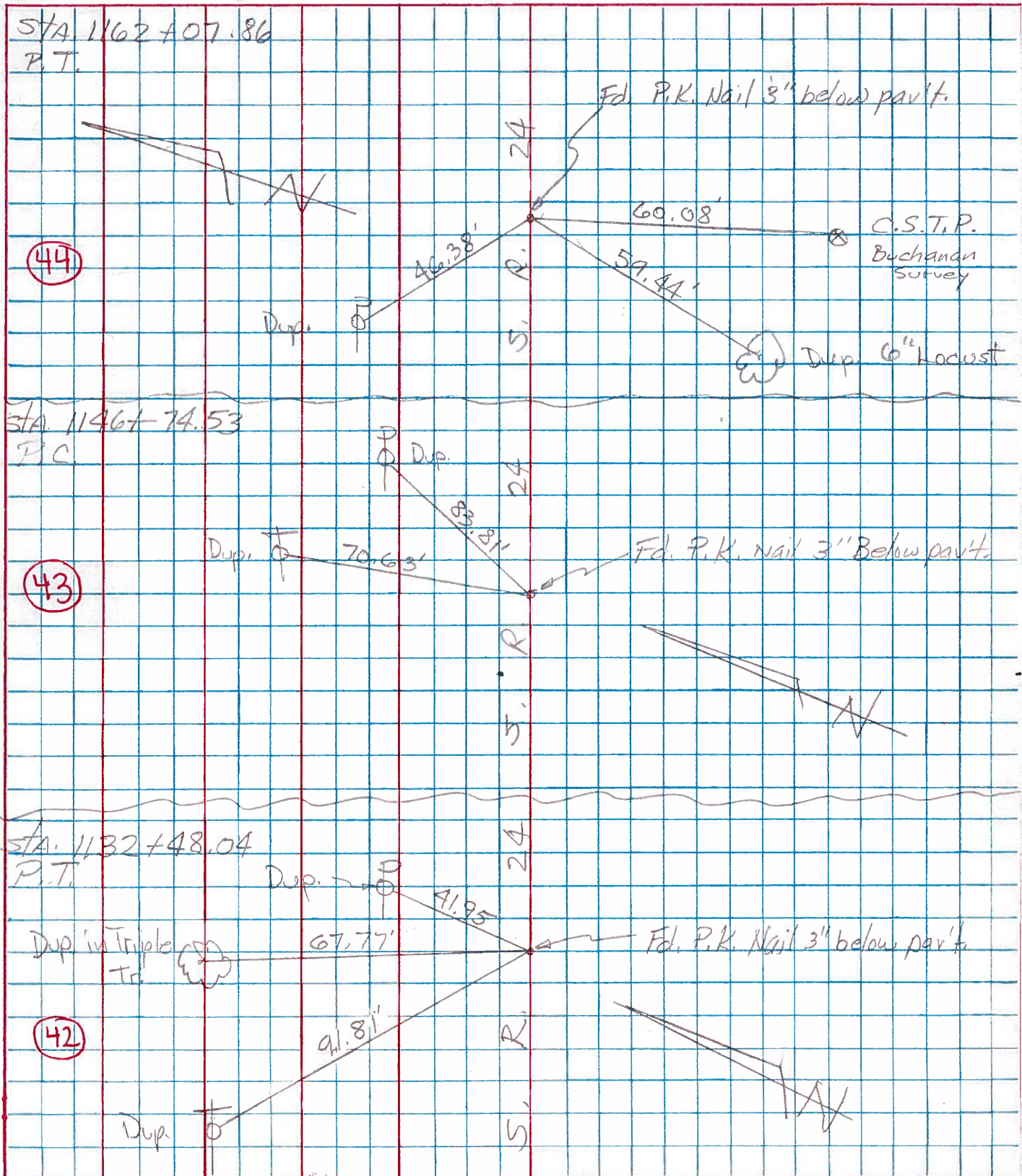
| PERSONNEL | TITLE | PERSONNEL | TITLE |
|-----------|-------|-----------|-------|
| Tomsic | | | |
| Weiser | | | |
| Granata | | | |

COUNTY HEW. DATE JULY 11, 1975

S. R. 24 WEATHER _____

SEC. _____ TEMP. _____

DESCRIPTION LEFT CENTER LINE RIGHT JOB NO.



PERSONNEL
Beach
Krape

TITLE _____

PERSONNEL _____

TITLE _____

COUNTY Henry
S. R. US-24

DATE 5 May 51

SEC. 11.22

TEMP. _____

DESCRIPTION

± Constr.

JOB NO. _____

LEFT

CENTER LINE

RIGHT

CURVE #

(24)

P.I. Sta. 1154 + 42.35
 $\Delta - 7^{\circ} 40'$ Rt.
 $D - 0^{\circ} 30'$
 $T - 767.82'$
 $L - 1533.33'$
 $E - 25.69'$
 $R - 11459.15'$

P.C. Sta. 1146 + 74.53
 P.T. Sta. 1162 + 07.86

P.I. Sta. 1154 + 42.35
 Tacked Hub

Dup. NW Side
 4" Thornapple

Dup. E Side
 15" Elm

Dup. ESE Side
 15" Elm

Dup. ENESide
 10" Elm

P.C. Sta. 1146 + 74.53
 Est. PR w/shiner

P.T. Sta. 1162 + 07.86
 Est. P.K. w/shiner

ESTD
 Buchan
 Survey

Dup. W Side
 14" Wild Cherry

Dup. W Side
 15" Elm

Dup. SW Side

Dup. NW Side
 9" Elm

