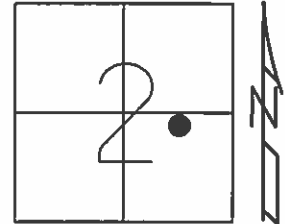


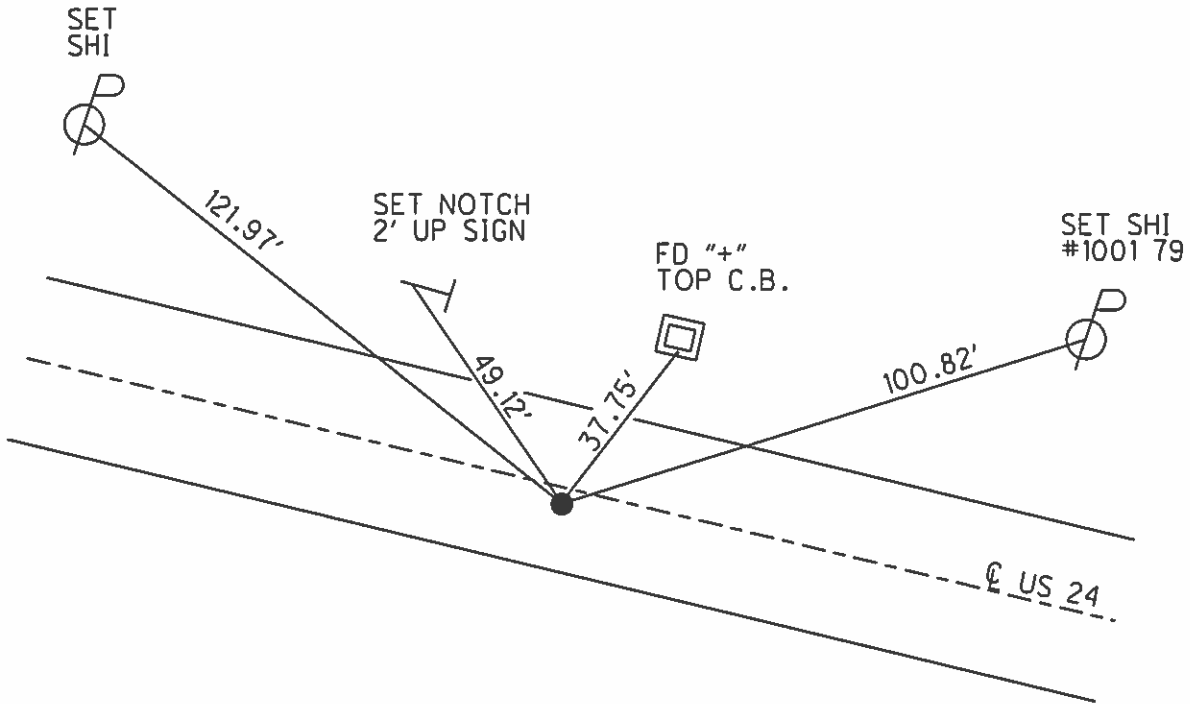
O.D.O.T. DISTRICT 2 SURVEY OFFICE (USE ONLY)

PERSONNEL _____ REFERENCE NO. 44 SHEET 31 OF 40
 NOTES HUSS DATE 7/28/08 ROUTE US 24
 H.C. MOSER WEATHER CLEAR COUNTY HENRY
 R.C. CANTERBURY TEMP. 80° TOWNSHIP WASHINGTON
 SECTION 2
 T 5 N R 8 E

TYPE MONUMENT P.K./WASHER
 ON SURFACE - ~~BELOW~~ ON _____
~~LEFT~~ - ☉ PAV'T - RIGHT 1.4'
10.4' TO RT EDGE PAVEMENT
 S.L.M. 955+42



Grid: Northing: _____ Easting: _____



RECORD: P.T.
 STA.1162+07.86

FD SM.R.R.SPIKE
 5/27/93, C.L.

SET P.K./WASHER
 7/8/93, C.L.

O.D.O.T. DISTRICT 2 SURVEY OFFICE

PERSONNEL

REFERENCE NO. 44

SHEET 30 OF 40

NOTES LOHRKE

H.C. BARNHISEL

R.C. CANTERBURY

Newell

DATE 5-27-93

WEATHER Cloudy

TEMP. +70

ROUTE U.S. 24

COUNTY Henry

TOWNSHIP Washington

SECTION 2

T 5 N R 8 E

TYPE MONUMENT Sm. R.R. Spike

ON SURFACE - BELOW Yes

LEFT - ~~C~~ PAV'T. - RIGHT 1.5

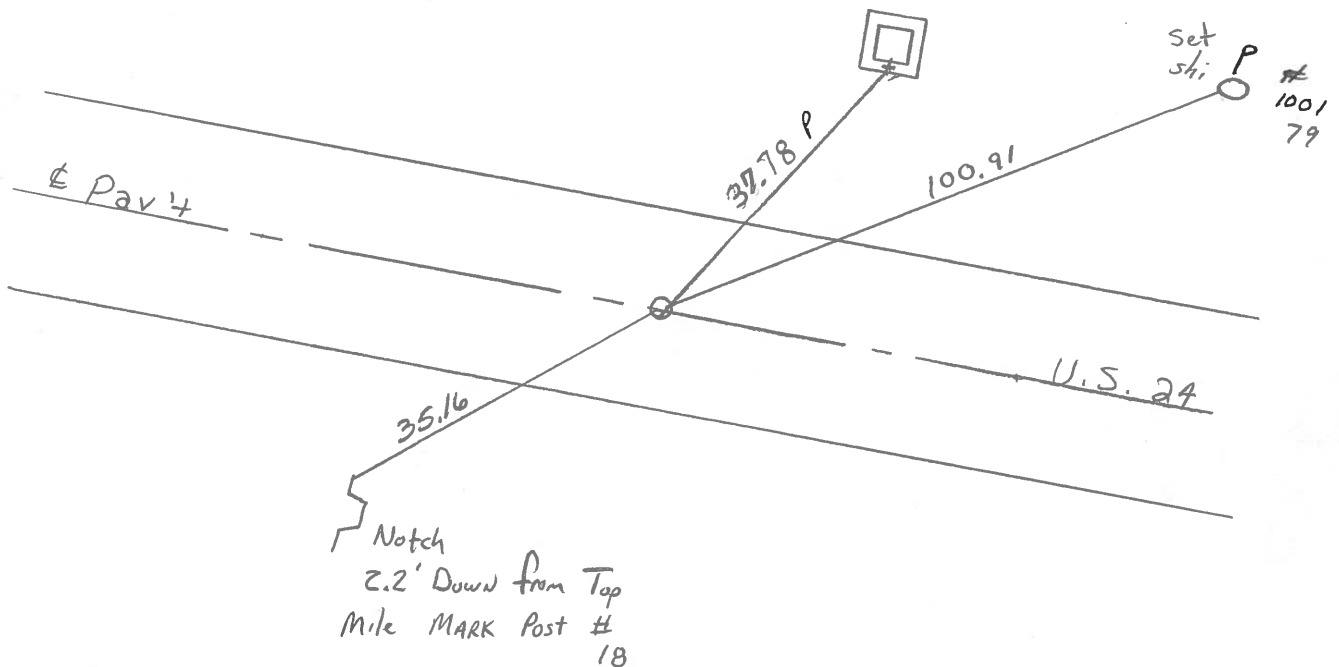
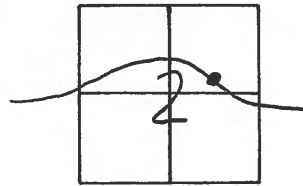
161 TO RT EDGE PAVEMENT

S.L.M. 955+42 18.09

Set P.I.K/WASHER

7-8-93,

C.I.



P.I.T. STA. 1162+07.86 Rec.

County HENRY S.R.-U.S.24

Date 6-4-81

Township WASHINGTON

Weather clear

Section 2

Temp. +80°

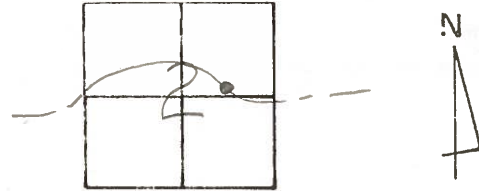
T&N, R&E

Personnel HOFFMAN

Loehrke

HOUSEHOLDER

44



Fd. P.K. 3" Below Surface

PROJECT STA ± 1152+21

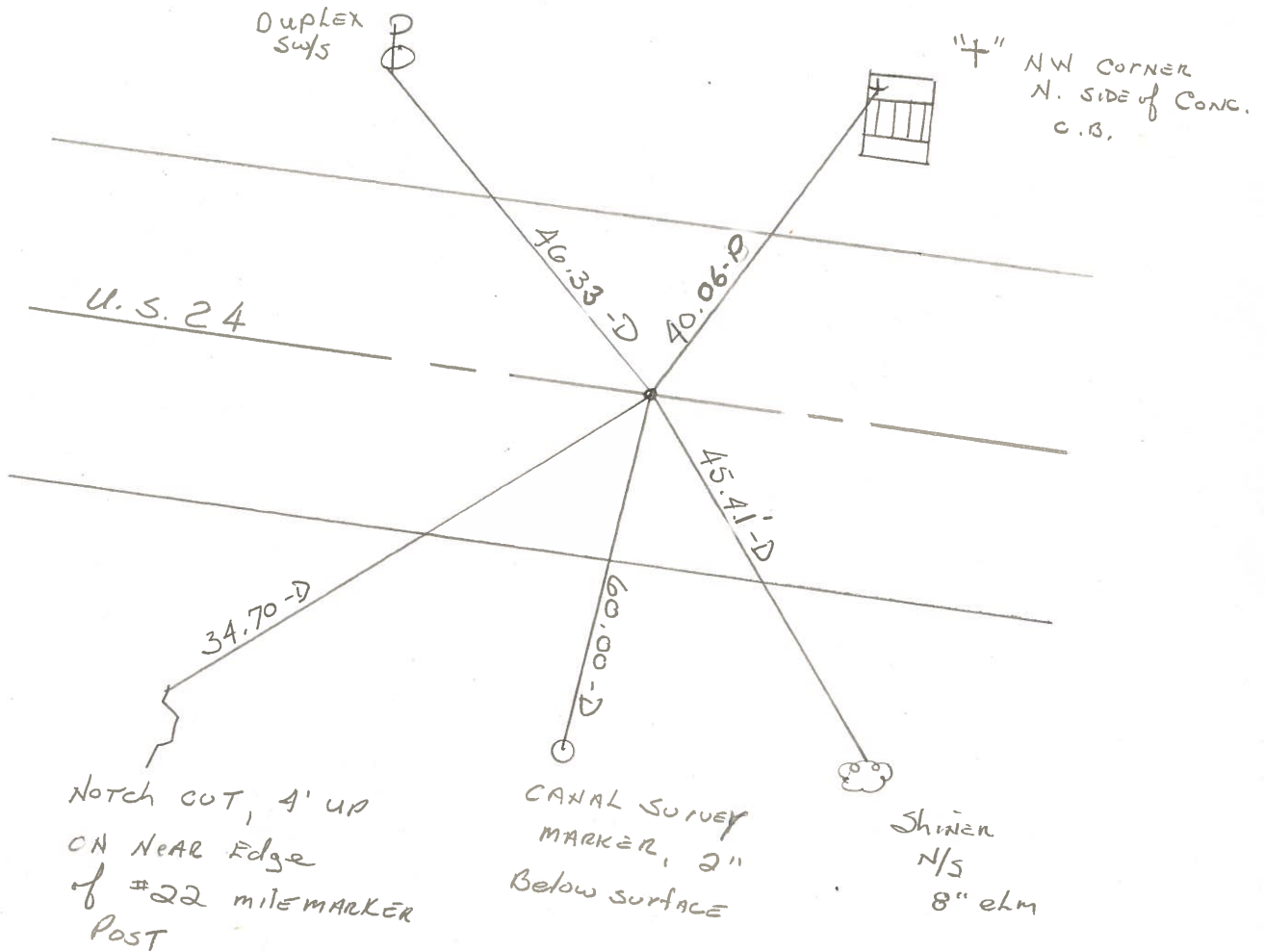
13.1 To S. Edge PAVT.

16.9 To N. Edge PAVT.

1.8 SOUTH OF E

SET SMALL R.R. SPK.

9-18-81 SWH



P.T. STA. 1162+07.86 REC.

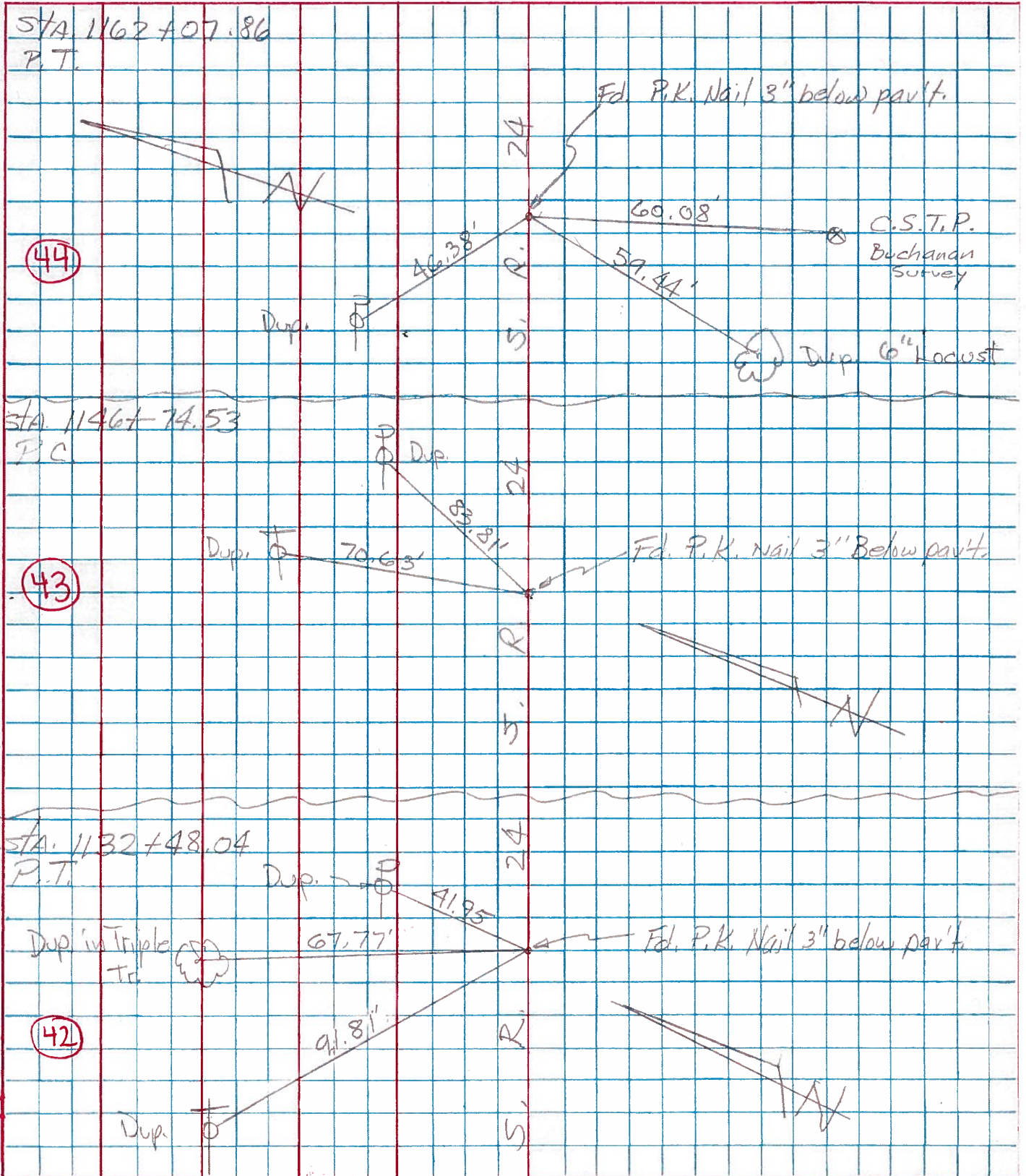
PERSONNEL	TITLE	PERSONNEL	TITLE
TOMSIK			
Neuser			
Granata			

COUNTY HEW. DATE JULY 11, 1975

S. R. 24 WEATHER _____

SEC. _____ TEMP. _____

DESCRIPTION	LEFT	CENTER LINE	RIGHT	JOB NO.
-------------	------	-------------	-------	---------



PERSONNEL
Beach
Knappe

TITLE _____

PERSONNEL _____

TITLE _____

COUNTY Henry

DATE 5 May 51

S. R. US-24

WEATHER _____

SEC. 11.22

TEMP. _____

DESCRIPTION

± Constr.

JOB NO. _____

LEFT

CENTER LINE

RIGHT

CURVE #

24

P.I. Sta. 1154 + 42.35
 Δ - 7° 40' Rt.
 D - 0° 30'
 T - 767.82'
 L - 1533.33'
 E - 25.69'
 R - 11459.15'

P.C. Sta. 1146 + 74.53
 P.T. Sta. 1162 + 07.86

P.I. Sta. 1154 + 42.35
 Tacked Hub

Dup. NW Side
 4" Thornapple

Dup. E Side
 15" Elm

Dup. ESE Side
 15" Elm

Dup. ENESide
 10" Elm

P.C. Sta. 1146 + 74.53
 Est. PR w/shiner

P.T. Sta. 1162 + 07.86
 Est. P.K. w/shiner

ESTD
 Buchan
 Survey

Dup. W Side
 14" Wild Cherry

Dup. W Side
 15" Elm

Dup. SW Side

Dup. NW Side
 9" Elm

