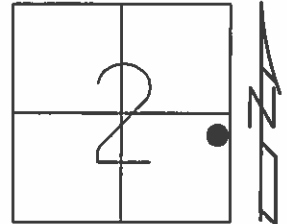


O.D.O.T. DISTRICT 2 SURVEY OFFICE (USE ONLY)

PERSONNEL \_\_\_\_\_ REFERENCE NO. 45 SHEET 32 OF 40  
 NOTES HUSS DATE 7/28/08 ROUTE US 24  
 H.C. MOSER WEATHER CLEAR COUNTY HENRY  
 R.C. CANTERBURY TEMP. 80° TOWNSHIP WASHINGTON  
 \_\_\_\_\_ SECTION 2  
 \_\_\_\_\_ T 5 N R 8 E

TYPE MONUMENT P.K./WASHER  
 ON SURFACE - ~~BELOW~~ ON \_\_\_\_\_  
~~LEFT~~ -  $\odot$  PAV'T - RIGHT 10.4'  
1.5' TO RT EDGE PAVEMENT  
 S.L.M. 970+30

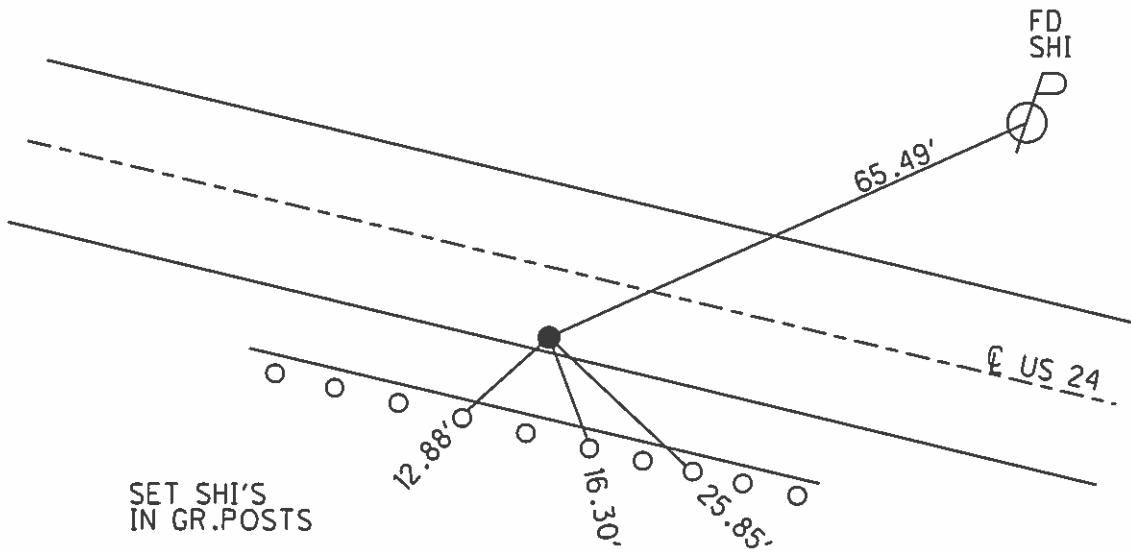


Grid: Northing: \_\_\_\_\_ Easting: \_\_\_\_\_

RECORD: P.I.  
 STA. 1176+95.71

FD SM.R.R.SPIKE  
 5/27/93, C.L.

SET P.K./WASHER  
 9/17/93, C.L.



O.D.O.T. DISTRICT 2 SURVEY OFFICE

PERSONNEL

REFERENCE NO. 45

SHEET 31 OF 40

NOTES LOHRKE

H.C. BARNHISEL

DATE 5-27-93

ROUTE U.S. 24

R.C. CANTERBURY

WEATHER cloudy

COUNTY Henry

Newell

TEMP. +70

TOWNSHIP Washington

Set P.K./WASHER

SECTION 2

9-17-93

T. 5 N R. 8 E

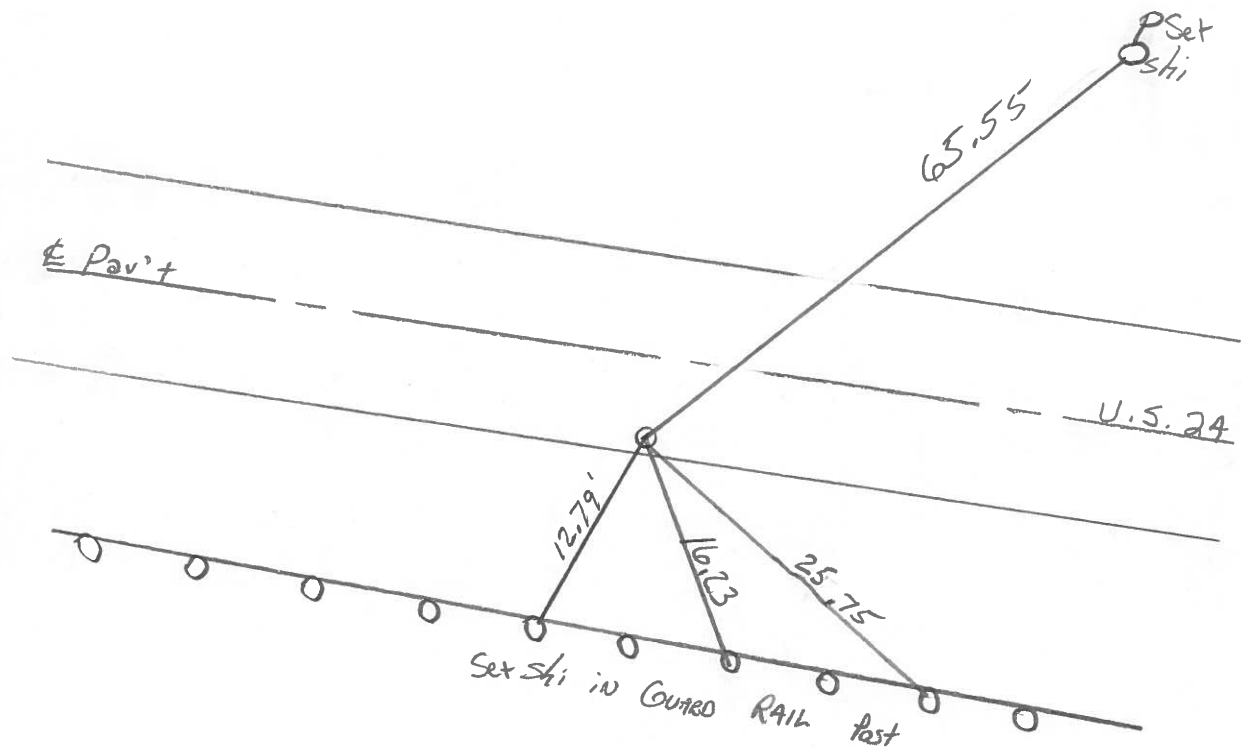
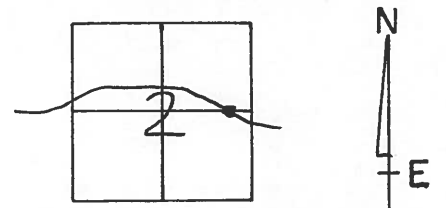
TYPE MONUMENT Sm. R.R. Spike

ON SURFACE - BELOW Yes

LEFT - & PAV'T. - RIGHT 10.9

1.8 TO Rt EDGE PAVEMENT

S.L.M. 970+30 18.38



P.I. STA. 1176+95.71 Rec.

County HENRY S.R. U.S. 24

Date 6-4-81

Township WASHINGTON

Weather clear

Section 2

Temp. +80°

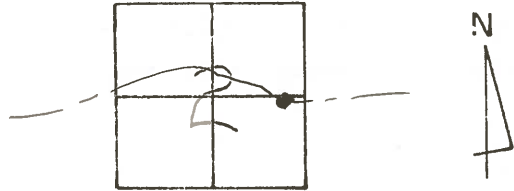
T5N, R8E

Personnel HOFFMAN

Loehrke

House holder

45



Fd. P.K. 3" Below surface

PROJECT STA. ± 1167+09

3.95 N. of E.P.

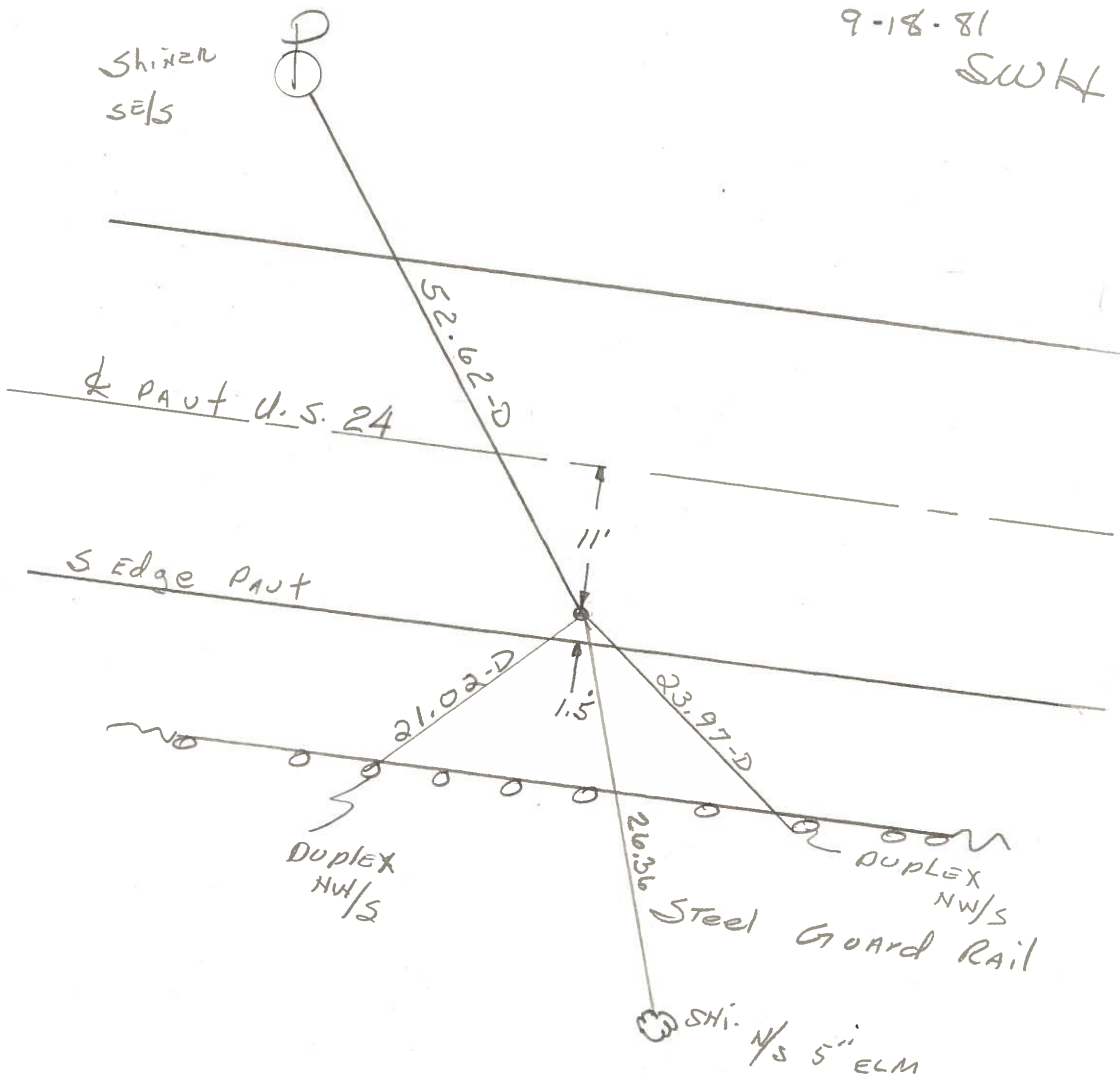
1.45 N. of WHITE STRIPE (S.S. OF STRIPE)

10.7 S. of E

SET SMALL R.R. SPR.

9-18-81

SWH

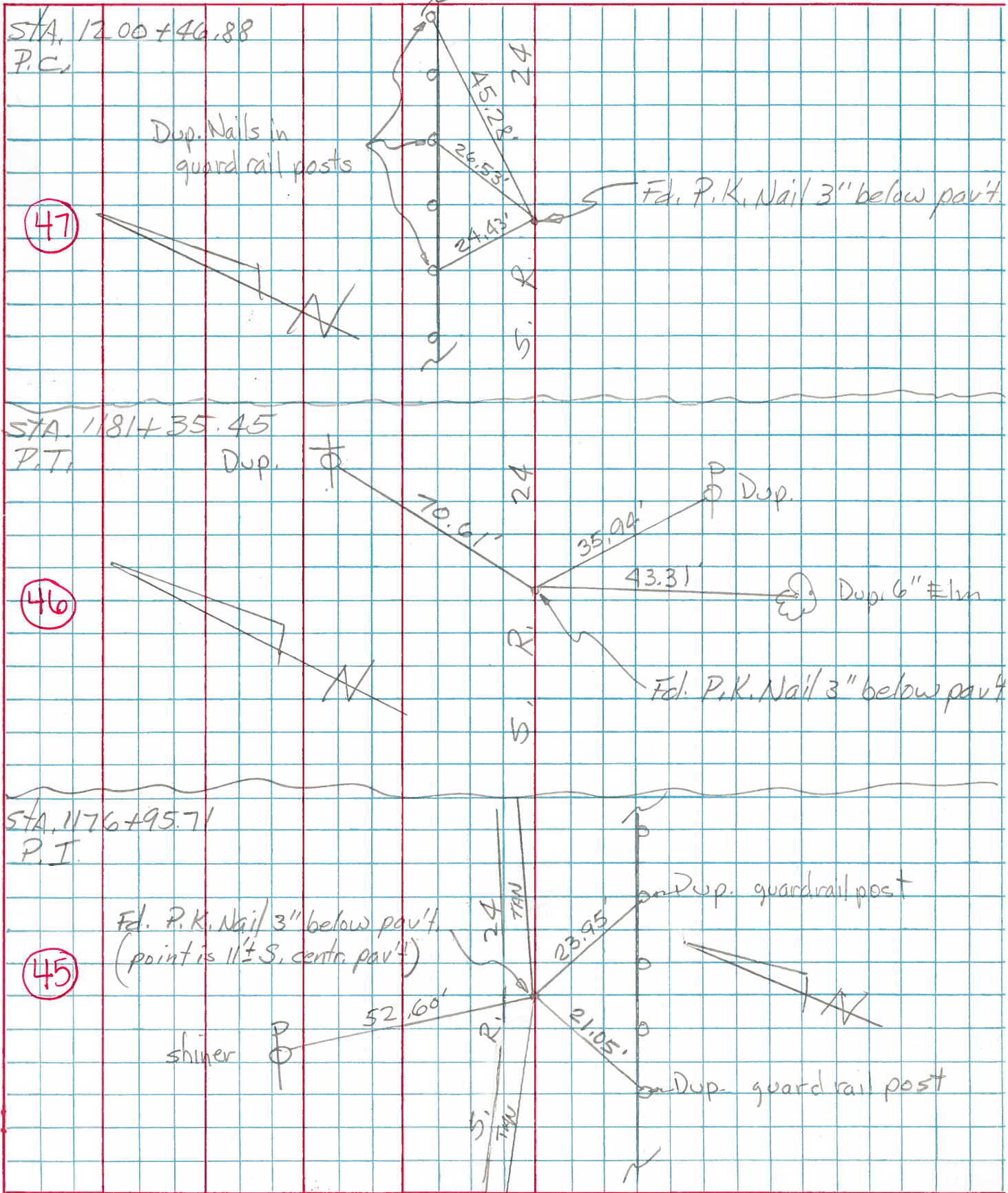


P. I. STA. 1176+95.71 REC.

PERSONNEL	TITLE	PERSONNEL	TITLE
Tomsic			
Neuser			
Granata			
Curtis			

COUNTY HEN. DATE JULY 14, 1977  
 S. R. 24 WEATHER \_\_\_\_\_  
 SEC. \_\_\_\_\_ TEMP. \_\_\_\_\_

DESCRIPTION \_\_\_\_\_ LEFT \_\_\_\_\_ CENTER LINE \_\_\_\_\_ RIGHT \_\_\_\_\_ JOB NO. \_\_\_\_\_



PERSONNEL TITLE PERSONNEL TITLE

*Silvester*

COUNTY *Henry*

DATE \_\_\_\_\_

S. R. *24*

WEATHER \_\_\_\_\_

SEC. \_\_\_\_\_

TEMP. \_\_\_\_\_

DESCRIPTION *Curve Data of witness ties*

LEFT

CENTER LINE

RIGHT

JOB NO. \_\_\_\_\_

CURVE #

**25**

*P.H. Sta. 1176 + 95.71*

*P.G. Sta. 1172 + 55.45*

*P.T. Sta. 1181 + 35.45*

*A = 424' ±*

*Dc = 0° 30'*

*T = 440.26*

*L = 880.00*

*R = 11,459.16*

*E = 8.75*

*P.L. wit*

*Shiner in P. Pole N.W. 52.67*

*Shiner in T. Pole N. 77.57*

*Shiner in 15" Elm N.N.E. 72.80*

*P.G. wit*

*Shiner in P. Pole N.W. 90.27*

*" " 12" Elm N. 69.41*

*" " " " N.E. 79.44*

*P.T. wit*

*Shiner in 10" Elm S.S.W. 40.12*

*Shiner in 12" Elm S.S.E. 52.17*