

O.D.O.T. DISTRICT 2 SURVEY OFFICE (USE ONLY)

PERSONNEL \_\_\_\_\_ REFERENCE NO. 49 SHEET 37 OF 40

NOTES LOEHRKE DATE 6/1/93 ROUTE US 24  
 H.C. ROMETO WEATHER CLEAR COUNTY HENRY  
 R.C. CANTERBURY TEMP. 60° TOWNSHIP WASHINGTON  
BARNHISEL SECTION 1  
 T 5 N R 8 E

TYPE MONUMENT 1/2" IPIN

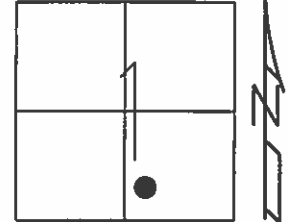
~~ON SURFACE~~ - BELOW 2"

LEFT - ☉ PAV'T - ~~RIGHT~~ 25.0'

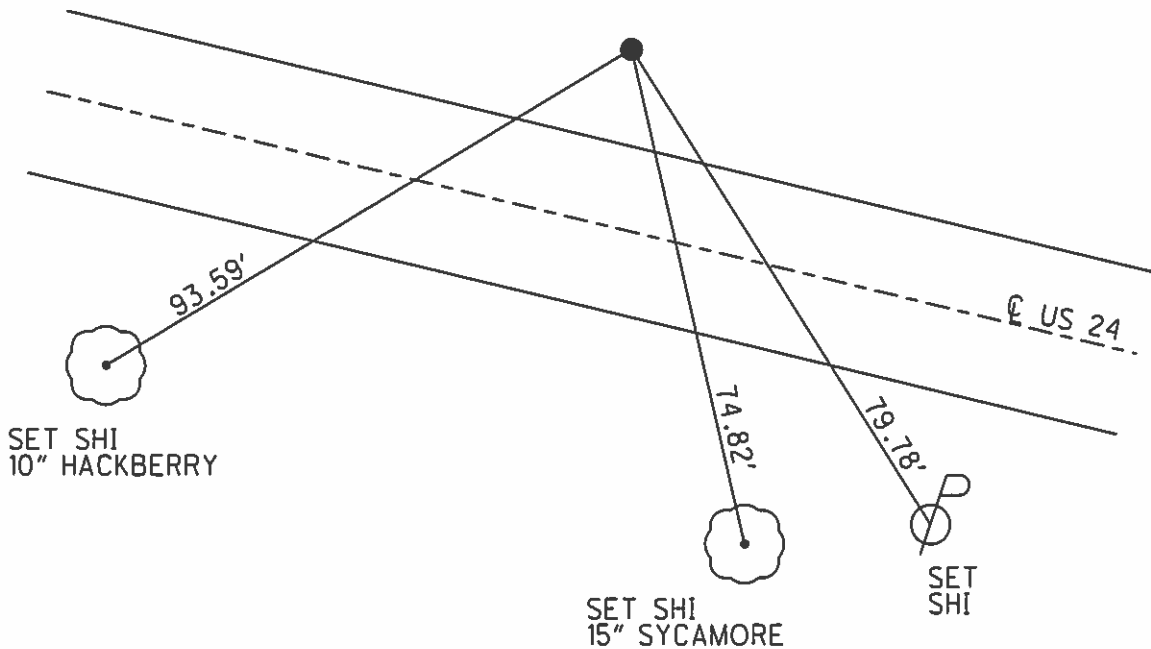
12.7' LT TO LT EDGE PAVEMENT

S.L.M. 999+12

Grid: Northing: - Easting: -



RECORD: P.I.  
 STA. 1205+75.88



O.D.O.T. DISTRICT 2 SURVEY OFFICE

PERSONNEL

REFERENCE NO. 49

SHEET 34 OF 40

NOTES LOEHRKE

H.C. ROMETO

DATE 6-1-93

ROUTE U.S. 24

R.C. CANTERBURY

WEATHER Clear

COUNTY Henry

BARNHISEL

TEMP. +60

TOWNSHIP Washington

SECTION 1

T 5 N R 8 E

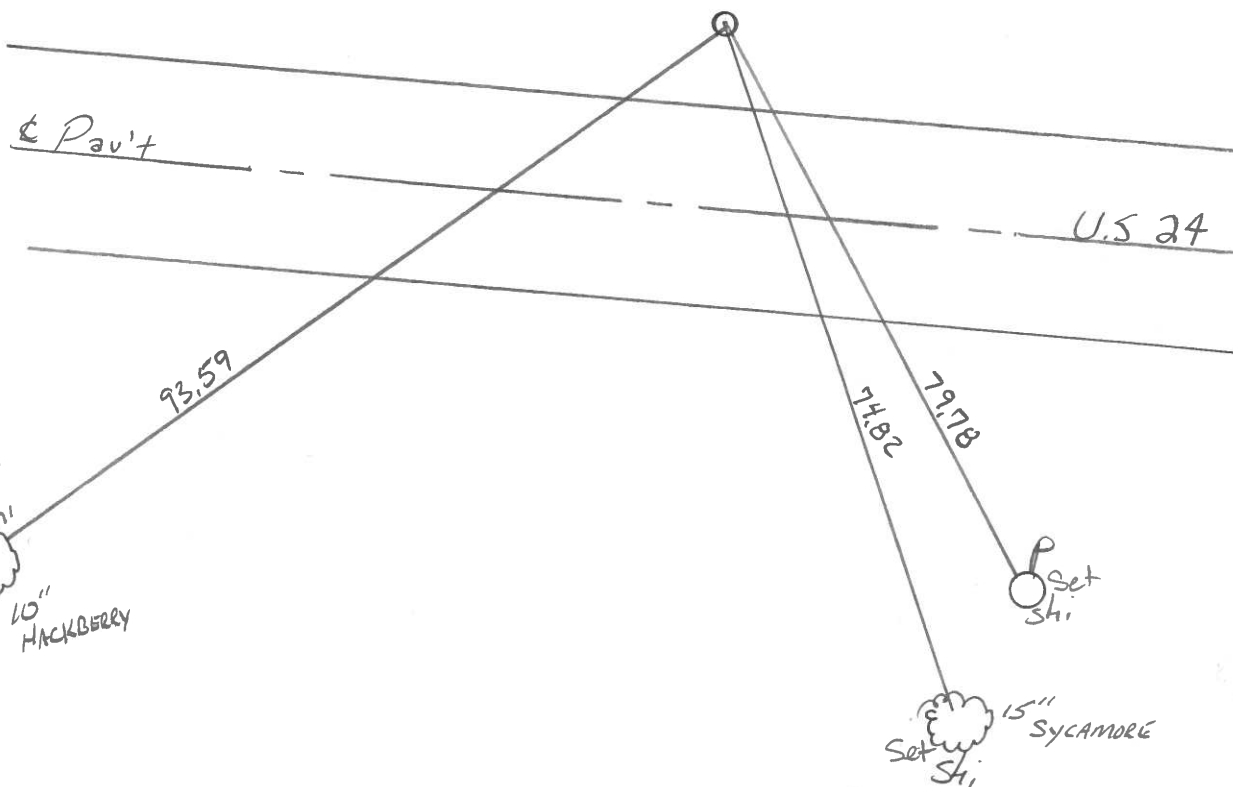
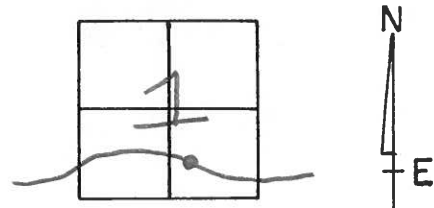
TYPE MONUMENT 1/2" IRON Rod

ON SURFACE - BELOW 2"

LEFT - 0 PAV'T. - RIGHT 25.0

12.71 <sup>ft</sup> <sub>of</sub> 2 EDGE PAVEMENT

S.L.M. 999 +12 18.92



P.F STA. 1205 + 75.88 Rec.

County HENRY S.R. -U.S. 24

Date 6-9-81

Township WASHINGTON

Weather Clear

Section 1

Temp. +70°

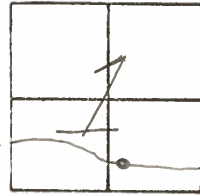
T5N, R8E

Personnel HOFFMAN

Loehrke

Householder

49



Fd.  $\frac{1}{2}$ " IRON Rod 2" Below Surface

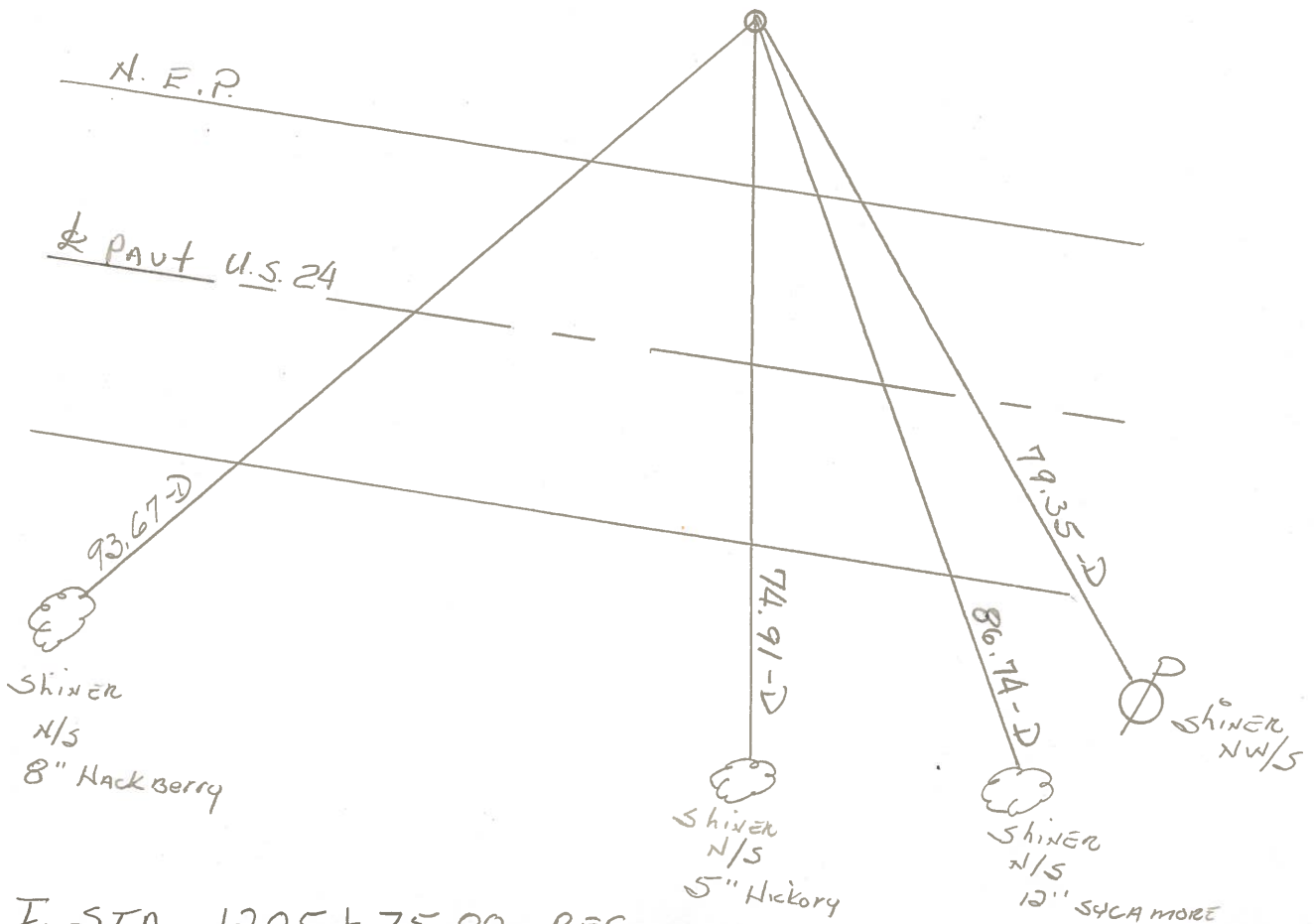
PROJECT STA.  $\pm$  1195+86

24.8' N. of  $\frac{1}{2}$  PAVT.

9.9' N. of N. Edge PAVT.

9-22-81

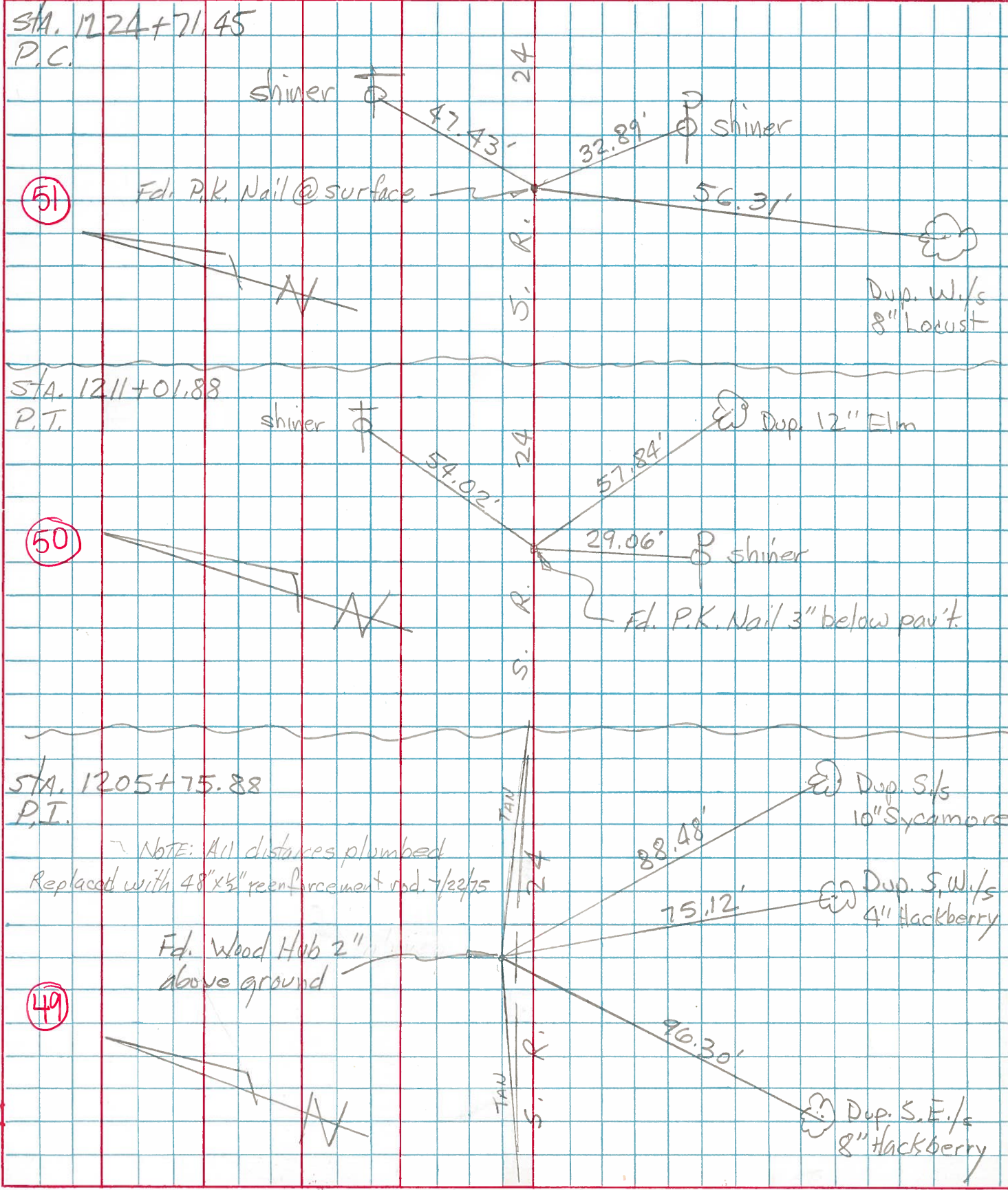
PAINTED ARROW ON SHOULDER  
SWHL



| PERSONNEL | TITLE | PERSONNEL | TITLE |
|-----------|-------|-----------|-------|
| Tomsic    |       |           |       |
| Neuser    |       |           |       |
| Grana fa  |       |           |       |
| Curtis    |       |           |       |

COUNTY HEN. DATE JULY 16, 1972  
 S. R. 24 WEATHER \_\_\_\_\_  
 SEC. \_\_\_\_\_ TEMP. \_\_\_\_\_

DESCRIPTION \_\_\_\_\_ LEFT \_\_\_\_\_ CENTER LINE \_\_\_\_\_ RIGHT \_\_\_\_\_ JOB NO. \_\_\_\_\_





PERSONNEL TITLE PERSONNEL TITLE

*Silvestro*

COUNTY *Henry*

DATE \_\_\_\_\_

S. R. *24*

WEATHER \_\_\_\_\_

SEC. \_\_\_\_\_

TEMP. \_\_\_\_\_

DESCRIPTION *Curve Data of witness ties*

JOB NO. \_\_\_\_\_

LEFT

CENTER LINE

RIGHT

CURVE #

*26*

PI. Sta. *1205+75.83*

PG. Sta. *1200+46.88*

PT. Sta. *1211+01.88*

*A = 10°33' R*

*Dc = 1'00*

*T = 529.00*

*L = 1055.0*

*R = 5729.58*

*E = 24.22*

PI. wit

*Shiner in 6" Elm S.W. 96.20*

*" " 8" " S.S.W. 73.40*

*Shiner in P.Pole S.E. 78.10*

PG. wit

*Shiner in P.Pole W.S.W. 96.3*

*Shiner in T.Pole N.W. 50.96*

*Shiner in 15" Ash S.S.W. 57.30*

PT. wit

*Shiner in T.Pole E.N.E. 54.10*

*" " P.Pole S.S.W. 29.05*

*" " 12" Elm S.E. 57.23*