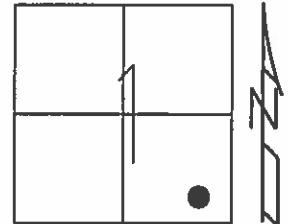


O.D.O.T. DISTRICT 2 SURVEY OFFICE (USE ONLY)

PERSONNEL \_\_\_\_\_ REFERENCE NO. 51 SHEET 39 OF 40  
 NOTES HUSS DATE 7/28/08 ROUTE US 24  
 H.C. MOSER WEATHER FAIR COUNTY HENRY  
 R.C. CANTERBURY TEMP. 80° TOWNSHIP WASHINGTON  
 \_\_\_\_\_ SECTION 1  
 \_\_\_\_\_ T 5 N R 8 E

TYPE MONUMENT P.K./WASHER  
 ON SURFACE - ~~BELOW~~ ON \_\_\_\_\_  
~~LEFT~~ - ℄ PAV'T - RIGHT 2.4'  
9.4' TO RT EDGE PAVEMENT  
 S.L.M. 1018+10



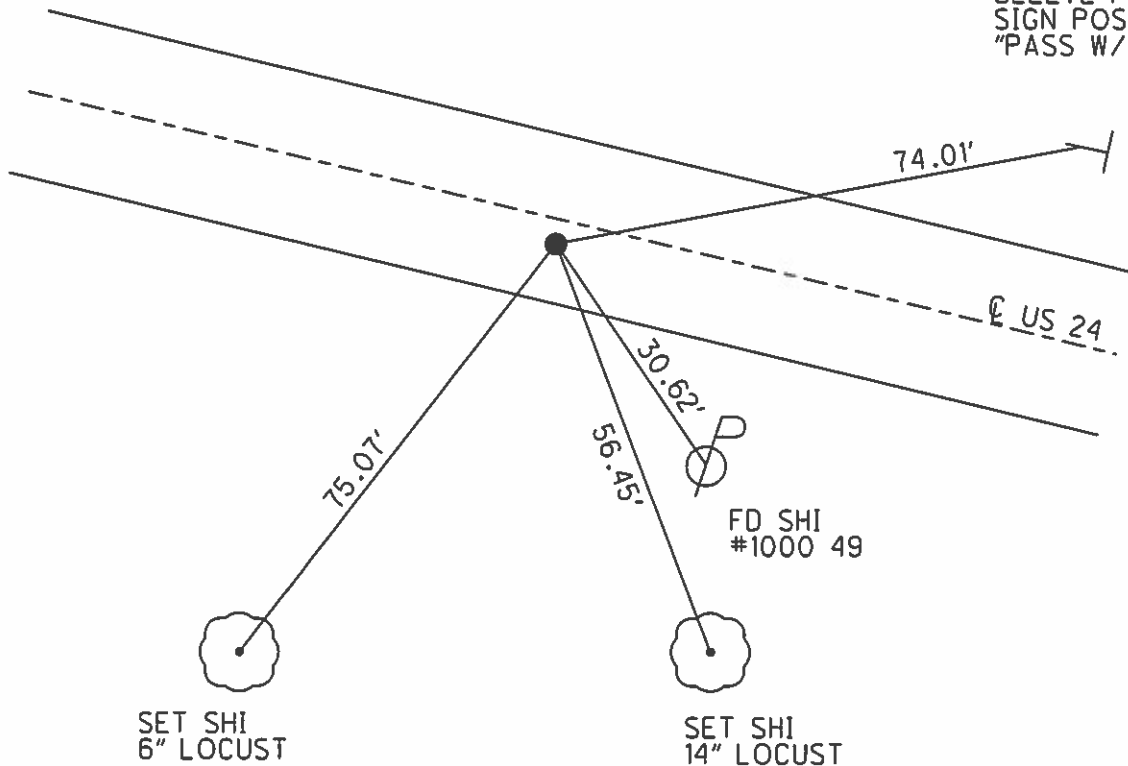
Grid: Northing: \_\_\_\_\_ Easting: \_\_\_\_\_

RECORD: P.C.  
 STA.1224+71.45

FD SM.R.R.SPIKE  
 6/1/93, C.L.

SET P.K./WASHER  
 9/17/93, C.L.

TOP OF LOWER  
 SLEEVE FOR  
 SIGN POST  
 "PASS W/CARE"



O.D.O.T. DISTRICT 2 SURVEY OFFICE

PERSONNEL

REFERENCE NO. 51

SHEET 36 OF 40

NOTES LOHRKE

H.C. ROMETO

R.C. CANTERBURY

BARNHISEL

DATE 6-1-93

WEATHER Clear

TEMP. +60

Set  
PK./WASHER

ROUTE U.S. 24

COUNTY Henry

TOWNSHIP Washington

SECTION 1

T 5 N R 8 E

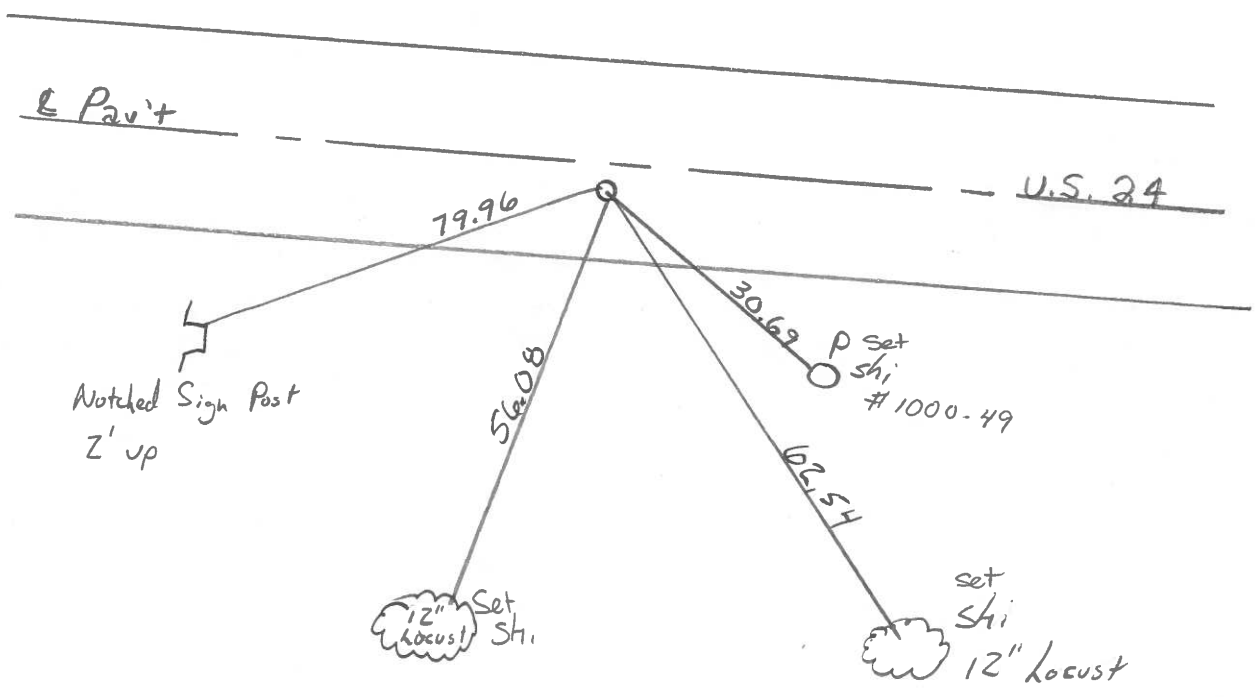
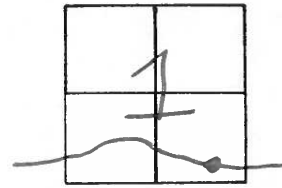
TYPE MONUMENT Sm. R.R. Spike 9-17-93 C.L.

ON SURFACE - ~~BELOW~~ Yes

LEFT - ~~C~~ PAV'T. - RIGHT 2.6

9.6 TO RT EDGE PAVEMENT

S.L.M. 1018+10 19.28



P.C. Sta 1224+71.45 Rec.

County HENRY S.R. -U.S. 24

Date 6-9-81

Township WASHINGTON

Weather CLEAR

Section 1

Temp. +70°

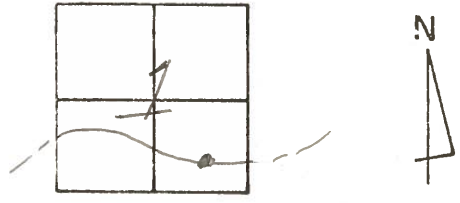
T5N, R0E

Personnel HOFFMAN

Loehrke

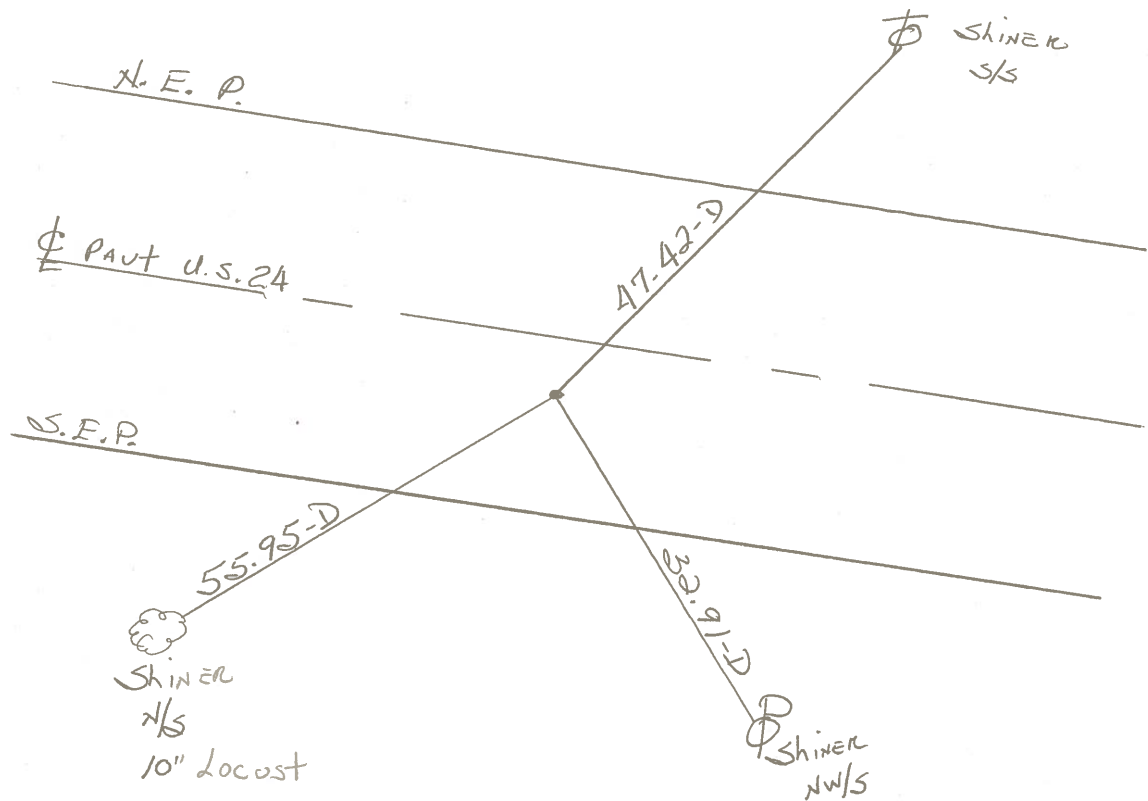
Householder

51



Fd. P.K. @ SURFACE  
 18.2' TO N. Edge PAVT  
 12.4' TO S. Edge PAVT.  
 2.8 S. OF E

PROJECT STA. ± 1214+85

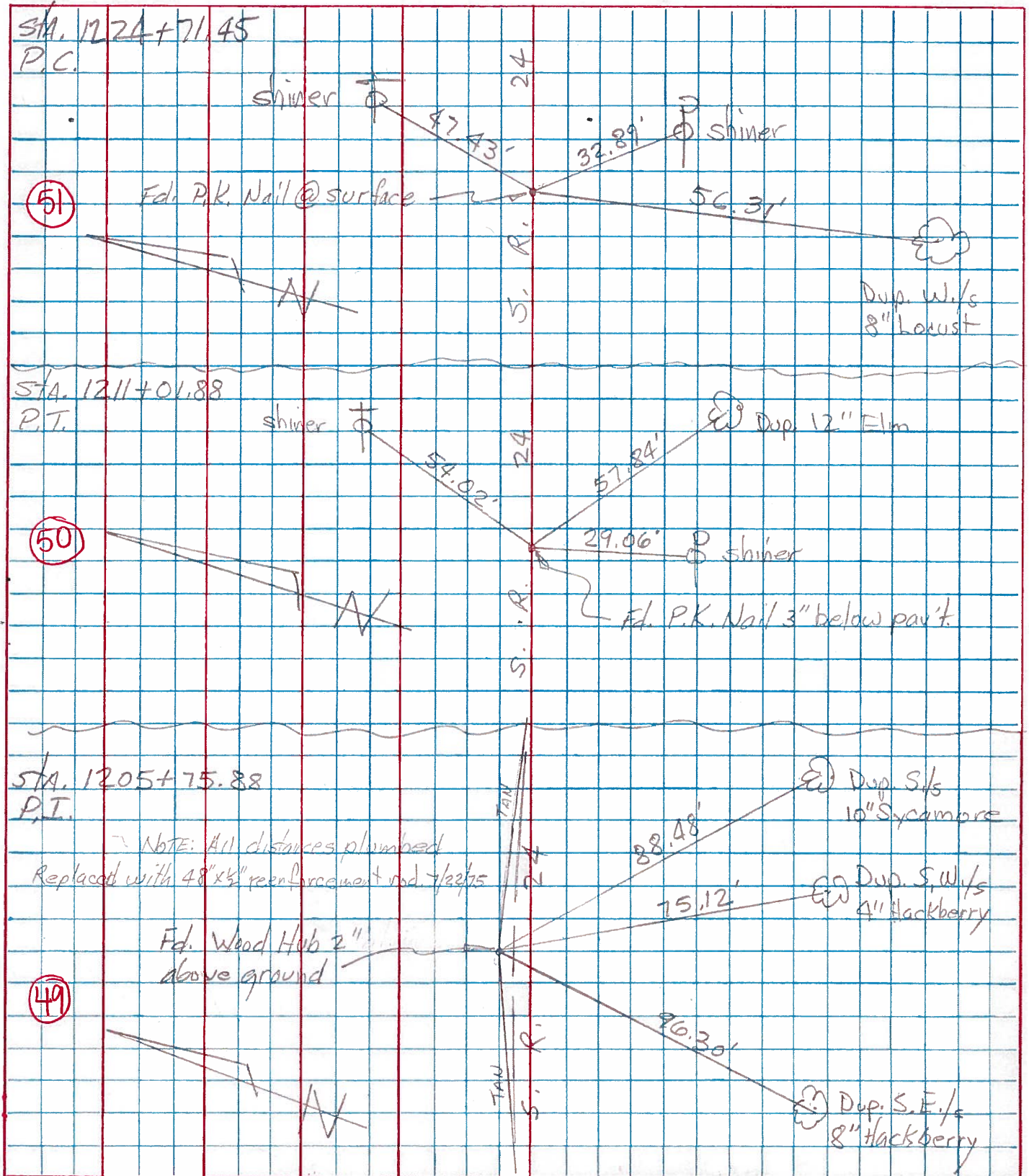


P.C. STA. 1224+71.45 -REC.

PERSONNEL	TITLE	PERSONNEL	TITLE
Tamsic			
Neuser			
Granata			
Curtis			

COUNTY HEN. DATE JULY 16, 1975  
 S. R. 24 WEATHER \_\_\_\_\_  
 SEC. \_\_\_\_\_ TEMP. \_\_\_\_\_

DESCRIPTION \_\_\_\_\_ LEFT \_\_\_\_\_ CENTER LINE \_\_\_\_\_ RIGHT \_\_\_\_\_ JOB NO. \_\_\_\_\_



PERSONNEL	TITLE	PERSONNEL	TITLE	COUNTY	DATE
Silvester					
				S. R. U.S. 24 Henry & Lucas Co. Line	WEATHER
				SEC.	TEMP.

DESCRIPTION Curve Data & witness ties LEFT CENTER LINE RIGHT JOB NO. \_\_\_\_\_

DESCRIPTION	LEFT	CENTER LINE	RIGHT	JOB NO.
		CURVE #	(27)	
P.I. Sta.	1231+77.78		@ Lucas Henry Co Line	
P.C. Sta.	1224+71.45			
P.T. Sta.			Shiner in 8" Elm W. 78.79	
A =	27°42' Lt.	P.I. wit	" " 12" Pine N.E. 36.57	
D =	2°00		" " 15" Ash E.S.E. 78.47	
T =	706.33			
L =	1385			
R =	2864.79			
E =	85.78			
		P.C. wit	Shiner in T. Pole N.E. 47.43	
			" " P. Pole S.E. 32.93	
			iron fence Post N.W. 69.85	
		P.T. wit	x on top E End Drive Pipe N.W. 41.78	
			Shiner in P. Pole N.W. 64.17	
			" " T. Pole S.W. 56.46	