

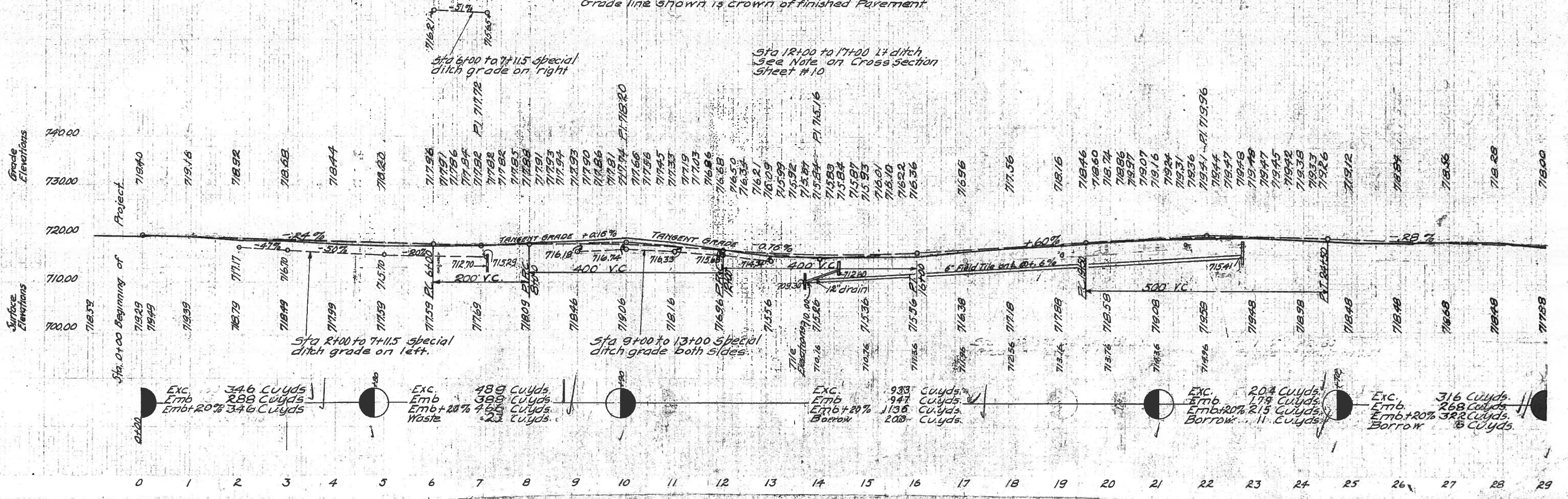
Stone S.E. Corner Sec. 24 Springfield Twp Henry County

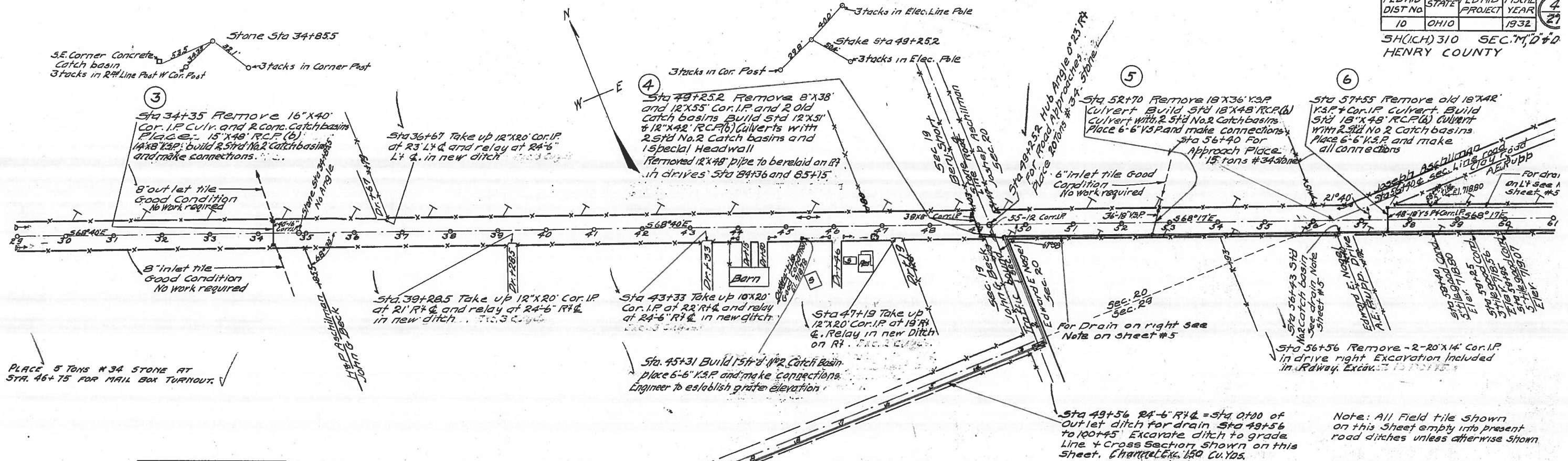
B.M. Sta. 0+25 Spike in Elec. Line Pole 30' R+L Elev. 720.16

B.M. Sta. 8+15 Spike in Tel. Pole 30' L+R Elev. 717.86

B.M. Sta. 16+15 Spike in Tel. Pole 30' L+R Elev. 715.38

B.M. Sta. 25+34 Spike in Tel. Pole 30' L+R Elev. 717.78





BM Sta 32+90
Spike in Tel. Pole 30' L x 4"
Elev. 716.65

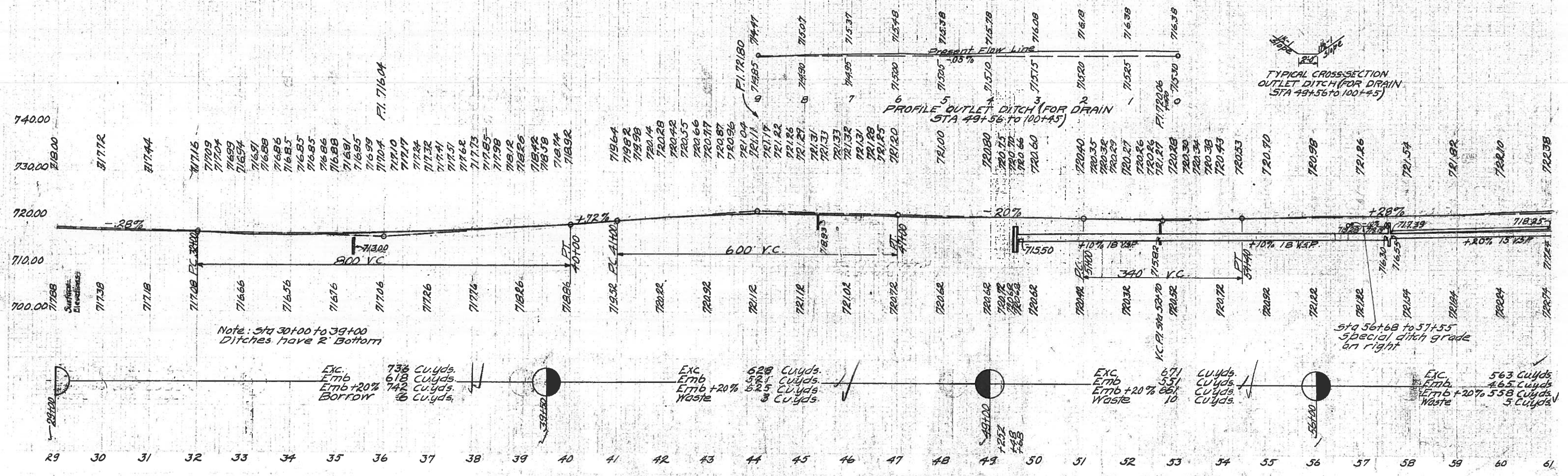
BM Sta 40+70
Spike Tel. Pole 30' L x 4"
Elev. 719.56

BM Sta 46+49
S.E. Cor. Lower Step to House on Rt
Elev. 723.54

BM Sta 57+57
Spike in Tel. Pole 30' L x 4"
Elev. 720.72

Grade line show is crown of finished pavement.

Note: All Field tile shown on this sheet empty into present road ditches unless otherwise shown.



Note: Sta 30+00 to 39+00
Ditches have R Bottom

TYPICAL CROSS SECTION
OUTLET DITCH (FOR DRAIN
STA 49+56 TO 100+45)

Sta 56+68 to 57+55
Special ditch grade
on right

FED.AID DIST NO	STATE	FED.AID PROJECT	FISCAL YEAR
10	OHIO	5H(I.C.H)310 SEC "M,D"	1932

Sta 92+30 Build Std 12" X 51" R.C.P. (b) Culvert with 2 Std No. 2 Catch Basins place 12x6" V.S.P.; 12x10" V.S.P.; 6"x8" V.S.P. and make all connections.

Sta 84+60 Build Std 12" X 51" R.C.P. (b) Culvert with 1 Std No. 2 Catch Basin and 1 Std No. 2 Catch Basin; Place 10-6" V.S.P.; 6"x8" V.S.P. and make connections.

Sta 84+36 Take up 12" X 24" Cor. I.P. Lt. & relay at 24-6" Lt. & in new ditch.

Sta. 84+67 to sta. 92+23 Place 756'-8" field drain tile 24" Lt. & Make all connections.

Sta 85+15 Deliver 24" X 12" Cor. I.P. from Sta. 49+25.2. Clean and relay for drive on right.

Sta 84+36 & 85+15 Remove 24" X 14" & 24" X 20" V.S.P. through drives Excavation included in Rdway. Excav.

Sta. 84+36 Deliver 24" X 12" Cor. I.P. from Sta. 49+25.2; Clean and relay for drive on right.

B.M. Sta 85+26 Spike in Tel Pole 30' Lt. & Elev. 728.22

B.M. Sta 75+53 Spike in Elec Pole 30' Rt. & Elev. 724.44

Note: All old tile shown on this sheet are in good condition, and empty in present road 3' back in Elec. Line Pole ditches

Sta 70+10 Remove old 10" X 44" V.S.P. Culvert at Sta. 70+24. Build Std 12" X 51" R.C.P. (b) Culvert; build 1st No. 1 and 1st No. 2 Catch Basin and make connections.

Sta 70+00 Take up 12" X 36" Cor. I.P. in drives on Lt. Relay at 24-6" Lt. in new ditch.

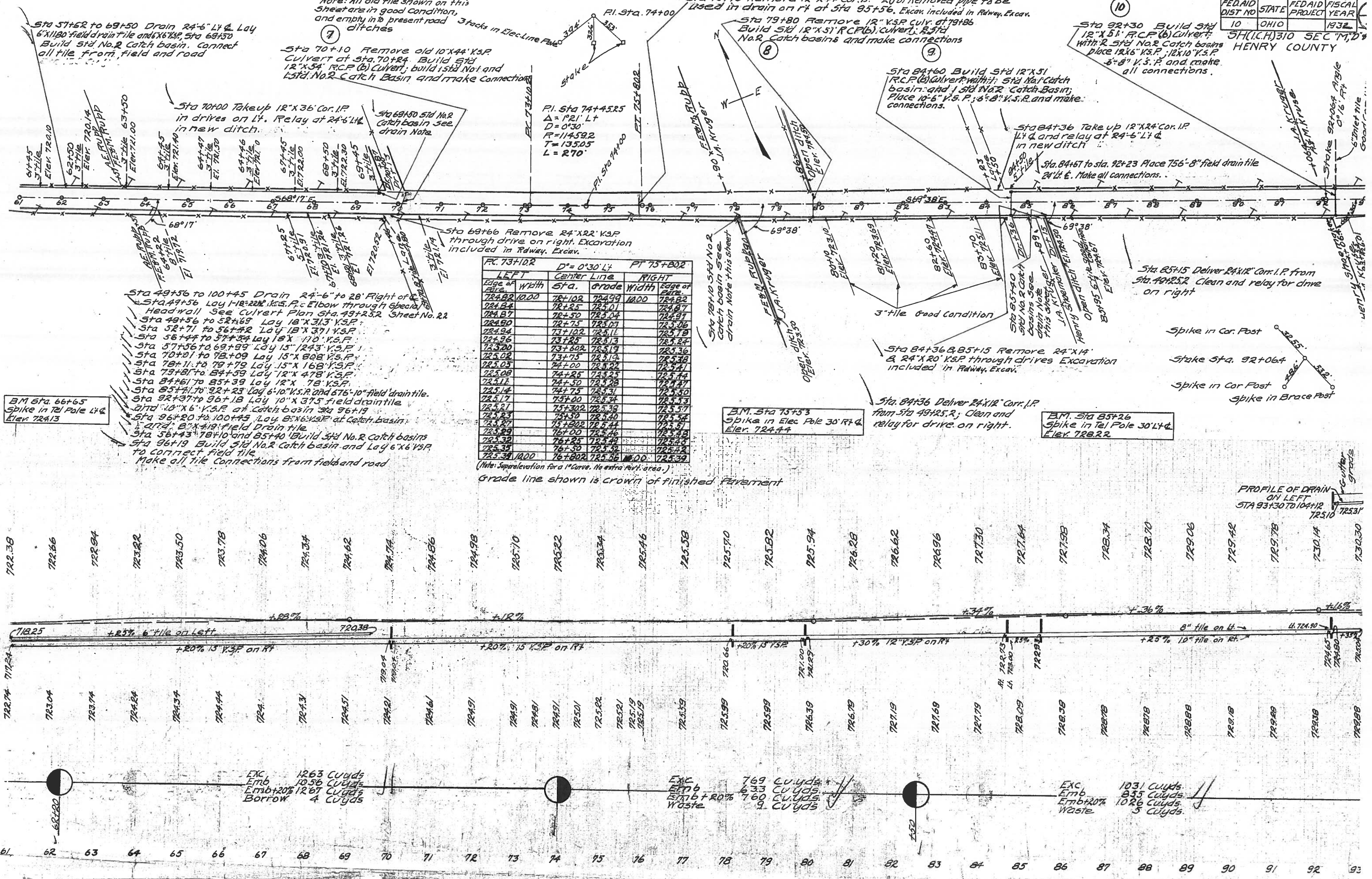
Sta 69+50 Std No. 2 Catch basin - see drain Note

P.I. Sta 74+45.25
 $\Delta = 121' Lt$
 $D = 0'30"$
 $R = 114592$
 $T = 13505$
 $L = 270'$

Sta 69+66 Remove 24" X 22" V.S.P. through drive on right. Excavation included in Rdway. Excav.

P.C. 73+10.2		D ^o = 0'30" Lt		P.T. 75+80.2	
LEFT	RIGHT	Center Line	Center Line	LEFT	RIGHT
Edge of Pav.	Edge of Pav.	Sta.	Grade	Width	Edge of Pav.
724.82	724.82	74+10.2	724.99	14.00	724.82
724.84	724.84	74+12.5	725.01		724.87
724.87	724.87	74+15.0	725.04		724.91
724.90	724.90	74+17.5	725.07		724.96
724.94	724.94	74+20.0	725.11		725.01
724.96	724.96	74+22.5	725.13		725.04
725.00	725.00	74+25.0	725.19		725.08
725.02	725.02	74+27.5	725.19		725.11
725.03	725.03	74+30.0	725.22		725.14
725.05	725.05	74+32.5	725.25		725.17
725.08	725.08	74+35.0	725.28		725.20
725.11	725.11	74+37.5	725.31		725.23
725.14	725.14	74+40.0	725.34		725.26
725.17	725.17	74+42.5	725.34		725.29
725.21	725.21	74+45.0	725.39		725.33
725.23	725.23	74+47.5	725.40		725.37
725.27	725.27	74+50.0	725.44		725.41
725.29	725.29	74+52.5	725.44		725.45
725.32	725.32	74+55.0	725.46		725.49
725.35	725.35	74+57.5	725.49		725.52
725.38	725.38	74+60.0	725.52		725.56
725.34	725.34	74+62.5	725.56	14.00	725.59

(Note: Superelevation for a 1' Curve. No extra part area.)
 Grade line shown is crown of finished pavement



Sta 49+56 to 100+45 Drain 24"-6" to 28" Right of Road
 Sta 49+56 Lay 18"x20" V.S.P. Elbow through Special Headwall See Culvert Plan Sta. 49+25.2 Sheet No. 22
 Sta 49+56 to 52+69 Lay 18"x31.3" V.S.P.
 Sta 52+71 to 56+48 Lay 18"x37.1" V.S.P.
 Sta 56+44 to 57+34 Lay 18"x 110" V.S.P.
 Sta 57+56 to 69+99 Lay 15" 1243" V.S.P.
 Sta 70+01 to 72+09 Lay 15"x 808" V.S.P.
 Sta 72+11 to 79+79 Lay 15"x 168" V.S.P.
 Sta 79+81 to 84+59 Lay 12"x 478" V.S.P.
 Sta 84+61 to 85+39 Lay 12"x 78" V.S.P.
 Sta 85+41 to 92+23 Lay 6'-10" V.S.P. and 6'-10" field drain tile
 Sta 92+27 to 96+18 Lay 10" X 37.5 field drain tile and 10" X 6" V.S.P. at Catch basin Sta 96+19
 Sta 96+20 to 100+45 Lay 8"x6" V.S.P. at Catch basin
 at Sta 78+19 field Drain tile
 Sta 56+43 78+10 and 85+40 Build Std No. 2 Catch basins
 Sta 96+19 Build Std No. 2 Catch basin and Lay 6"x6" V.S.P. to connect field tile
 Make all tile connections from field and road

B.M. Sta 66+65 Spike in Tel Pole Lt. & Elev. 724.13

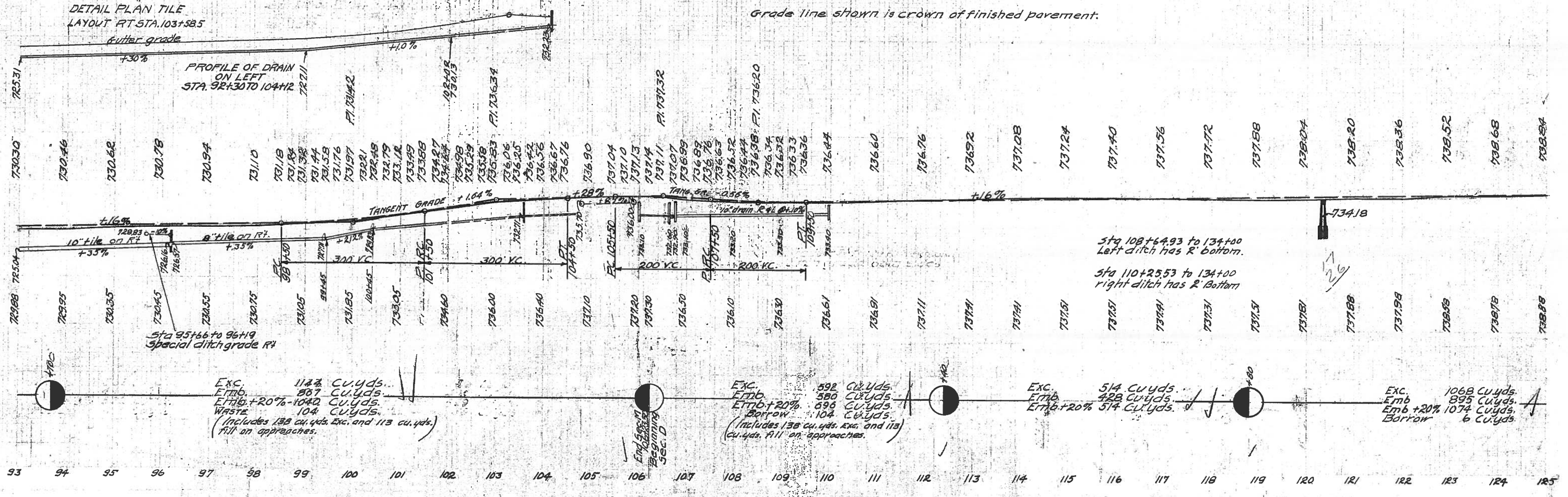
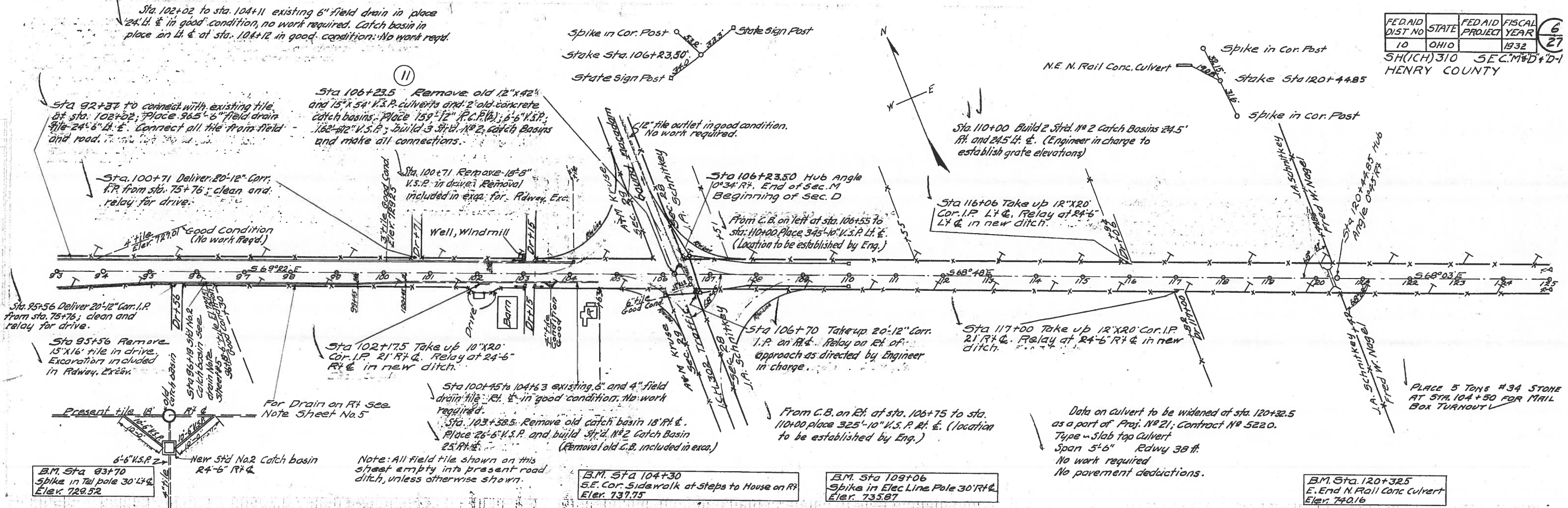
Spike in Cor. Post
 Spike Sta. 92+064
 Spike in Cor Post
 Spike in Brace Post

PROFILE OF DRAIN ON LEFT STA 93+30 TO 104+12

Exc 1263 Cu Yds
 Emb 10.56 Cu Yds
 Emb + 20% 12.67 Cu Yds
 Borrow 4 Cu Yds

Exc 769 Cu Yds
 Emb 6.33 Cu Yds
 Emb + 20% 7.60 Cu Yds
 Waste 9 Cu Yds

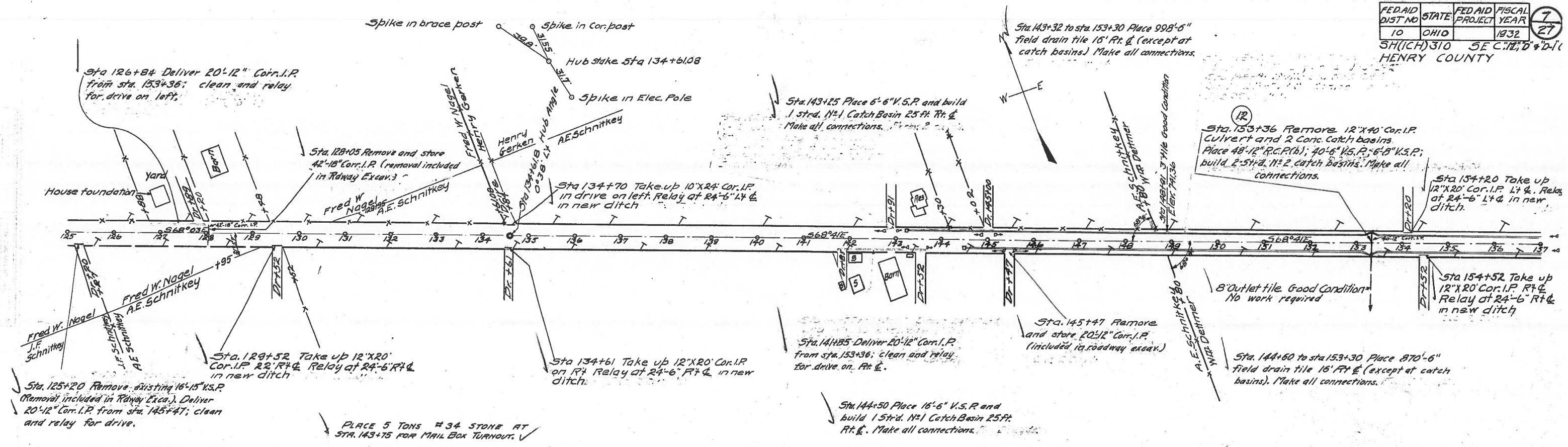
Exc 1031 Cu Yds
 Emb 8.33 Cu Yds
 Emb + 20% 10.26 Cu Yds
 Waste 5 Cu Yds



FED AID DIST NO	STATE	FED AID PROJECT	FISCAL YEAR
10	OHIO		1932

SH(ICH)310 SE C. H. D. & D. I.
HENRY COUNTY

7
27



B.M. Sta 128+80
Spike in Elec. Pole 30'R+G
Elev. 739.68

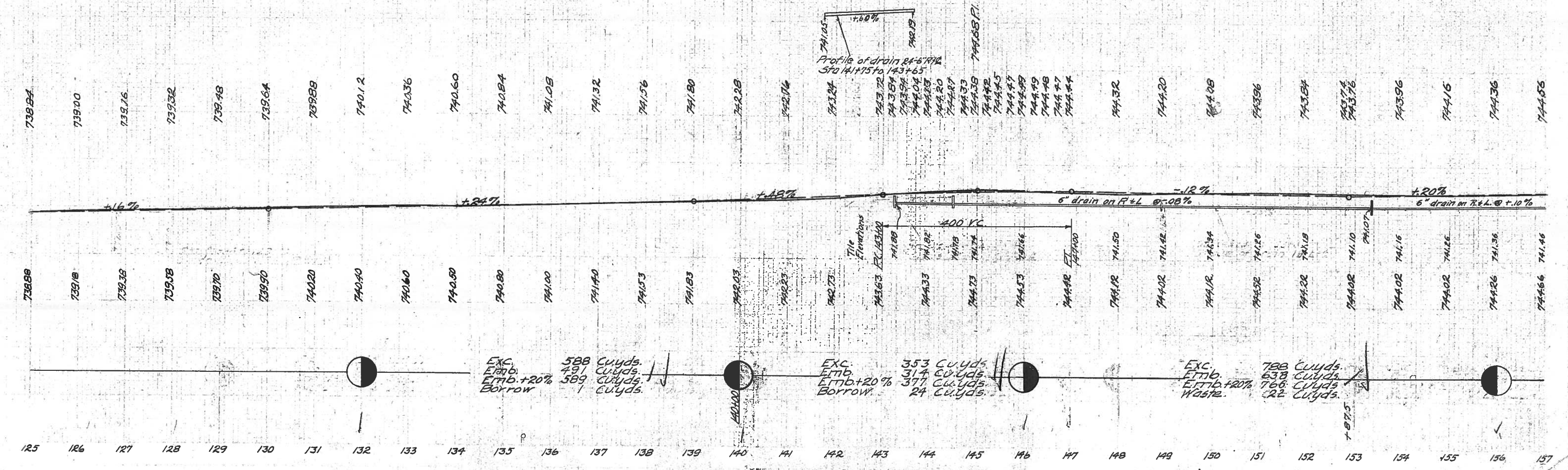
B.M. Sta 137+50
Spike in Elec. Pole 30'R+G
Elev. 741.29

B.M. Sta. 143+40
N.E. Cor. Conc. Water tank R+G
Elev. 746.11

B.M. Sta 146+10
Spike in Elec. Pole 30'R+G
Elev. 744.59

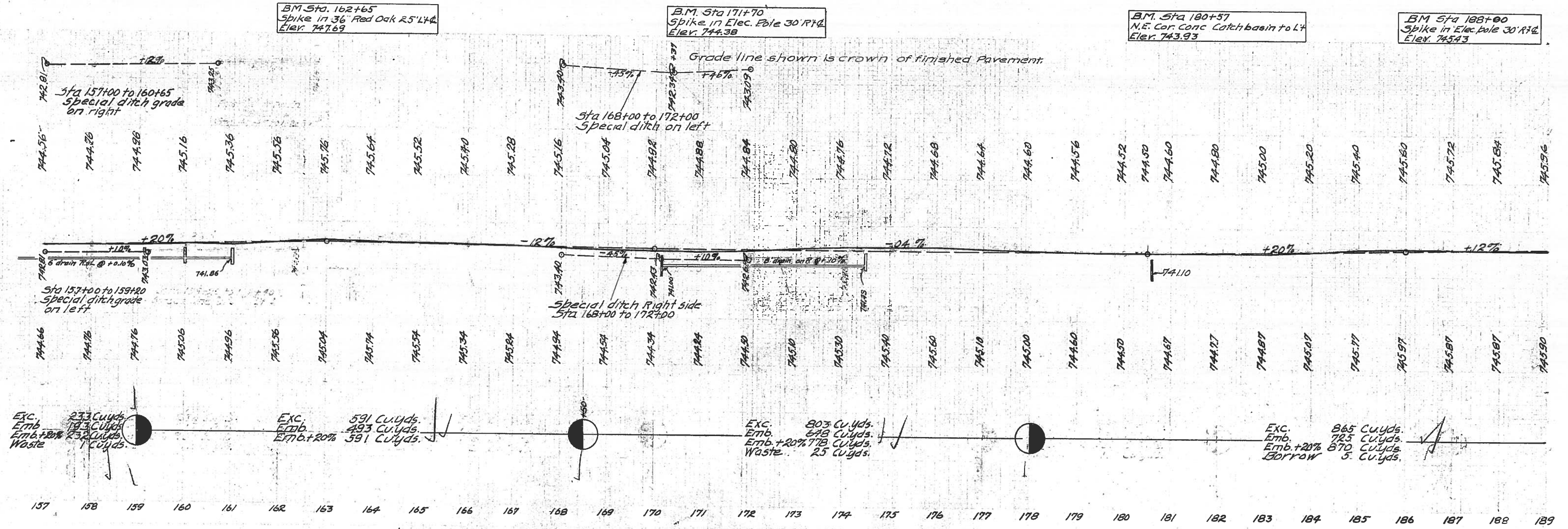
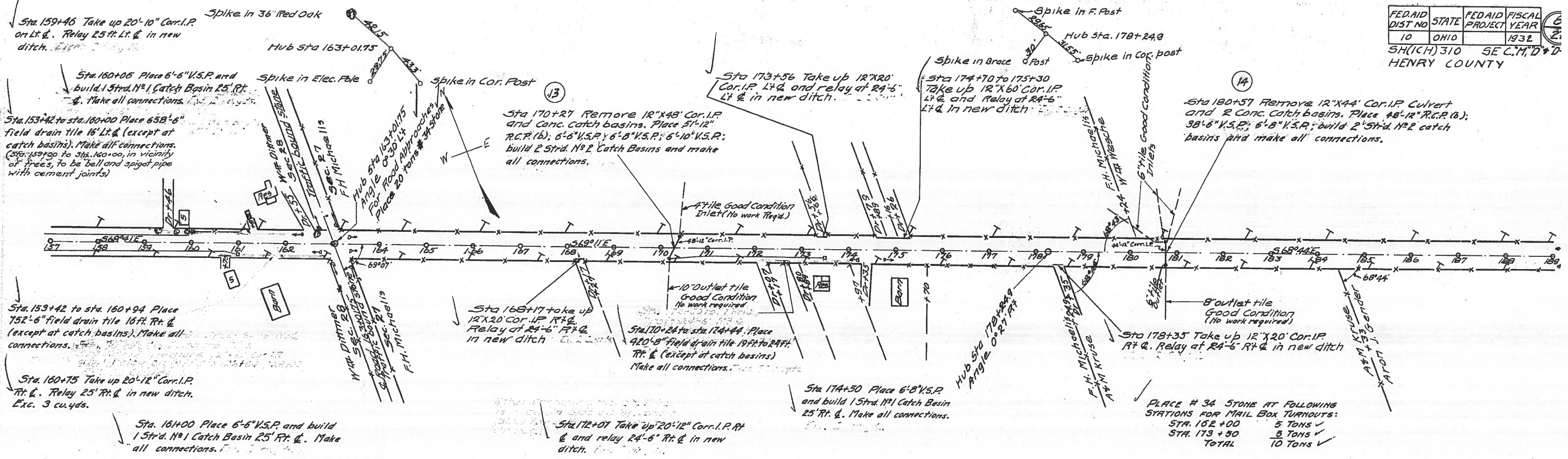
B.M. Sta 155+12
Spike in Elec. pole 30'R+G
Elev. 743.71

Grade line shown is crown of finished pavement

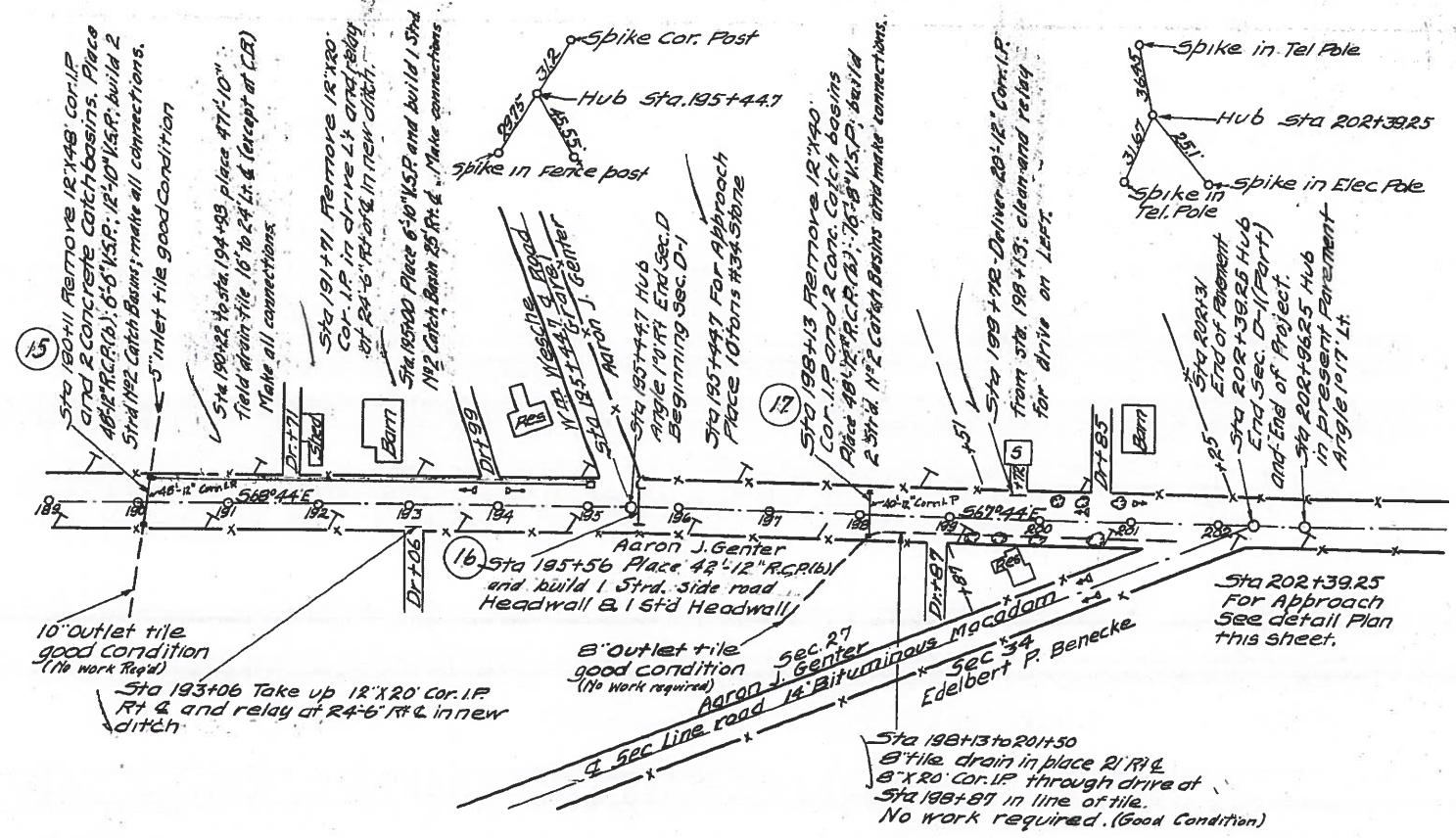


FED.AID DIST NO	STATE	FED.AID PROJECT	FISCAL YEAR
10	OHIO		1932

SH(CH)310 SEC. M, D & D
HENRY COUNTY



157 158 159 160 161 162 163 164 165 166 167 168 169 170 171 172 173 174 175 176 177 178 179 180 181 182 183 184 185 186 187 188 189

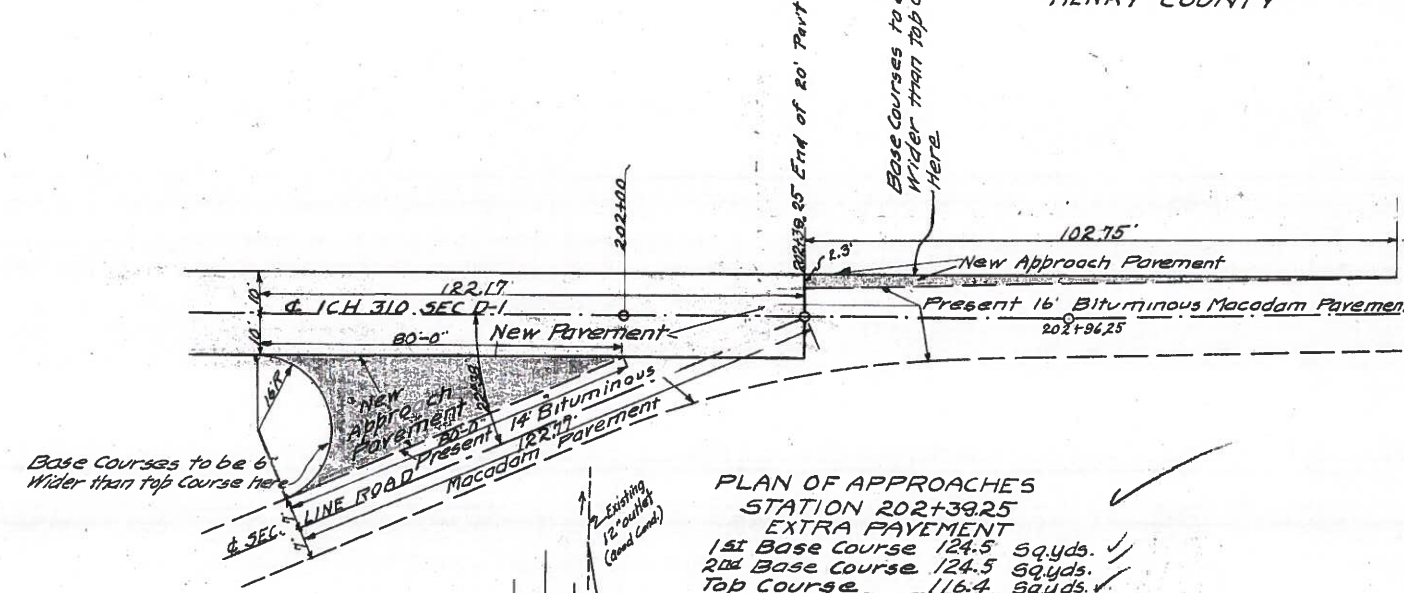
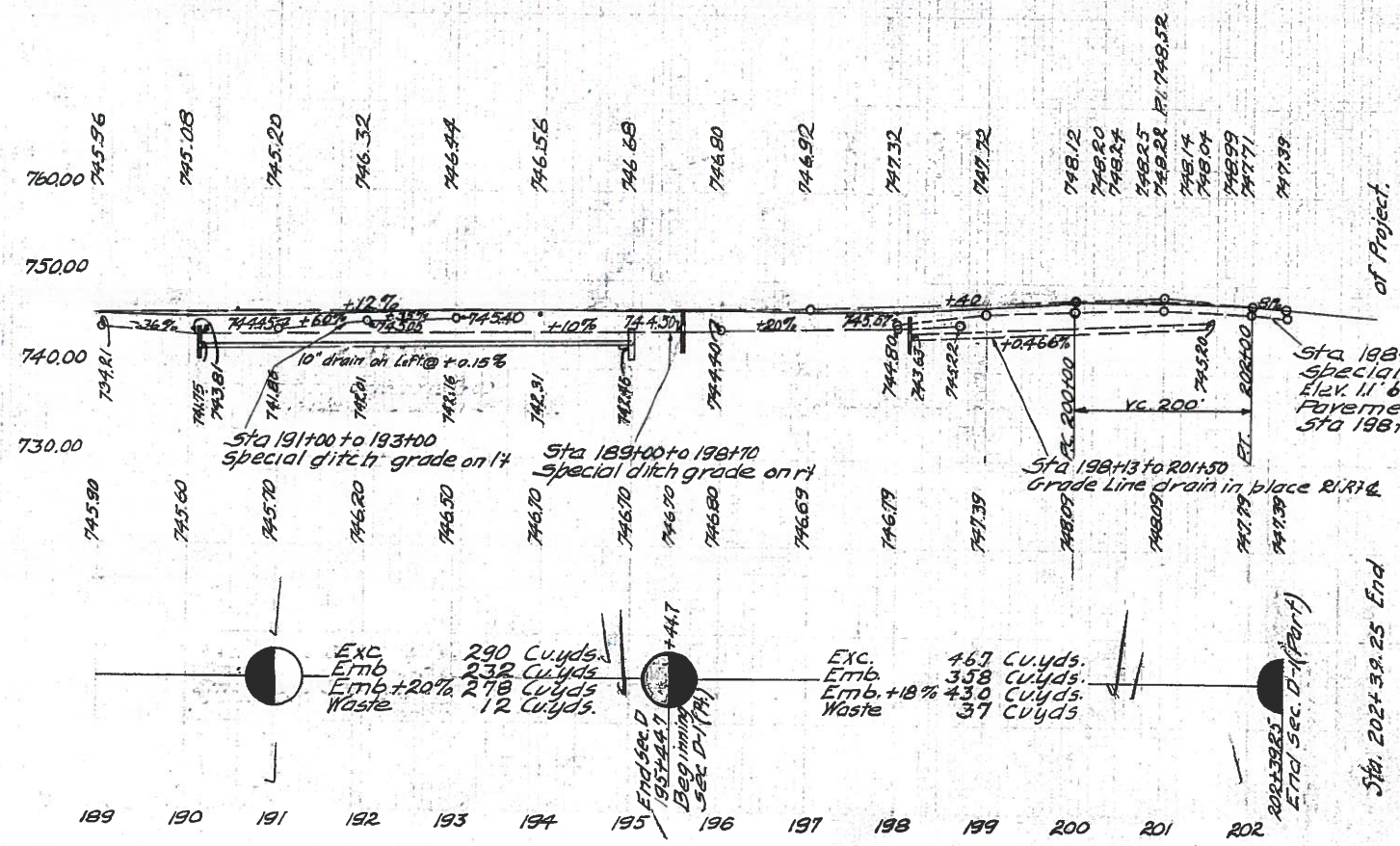


PLACE #34 STONE AT FOLLOWING STATIONS FOR MAIL BOX TURNOUTS:
 STA. 194+50 5 TONS
 STA. 199+50 5 TONS
 TOTAL 10 TONS

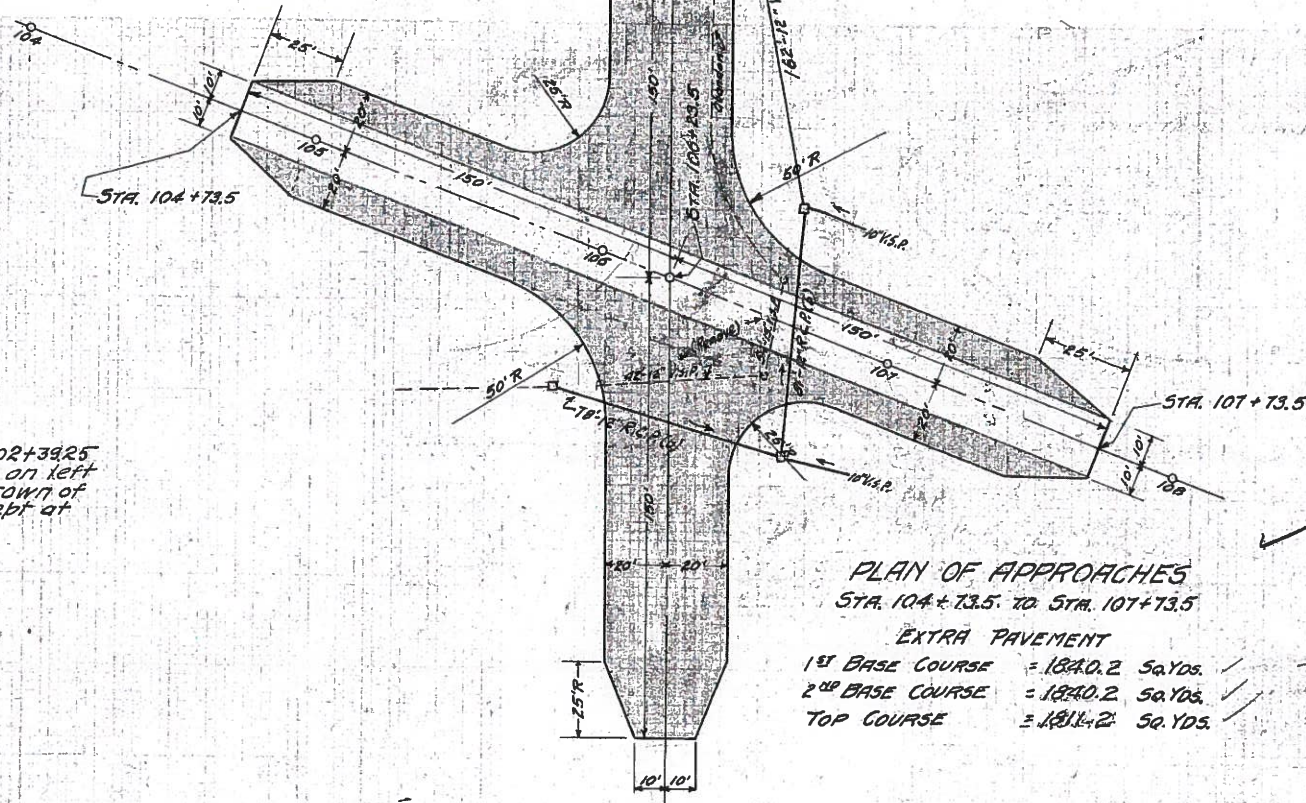
BM Sta 196+20
 Spike in Elec Pole 30' R/R &
 Elev. 752.59

BM Sta 201+70
 Spike in 24' Locust 24' L &
 Elev. 751.52

Grade line shown is crown of finished Pavement



PLAN OF APPROACHES
 STATION 202+39.25
 EXTRA PAVEMENT
 1st Base Course 124.5 Sq.yds.
 2nd Base Course 124.5 Sq.yds.
 Top Course 116.4 Sq.yds.
 Exc. Included in Roadway exc.



PLAN OF APPROACHES
 STA. 104+73.5 TO STA. 107+73.5
 EXTRA PAVEMENT
 1st BASE COURSE = 1840.2 Sq.Yds.
 2nd BASE COURSE = 1840.2 Sq.Yds.
 TOP COURSE = 1811.2 Sq.Yds.