

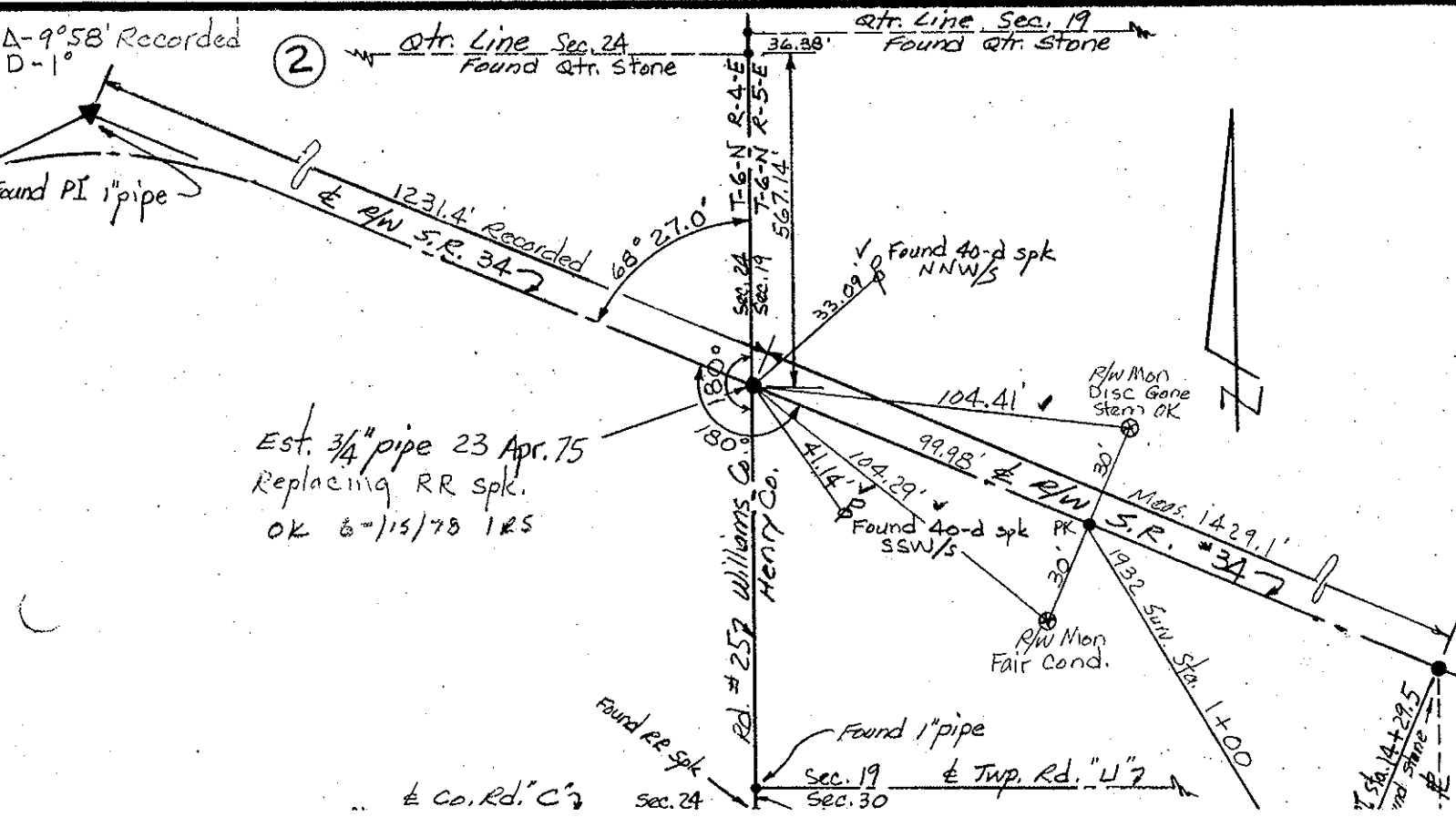
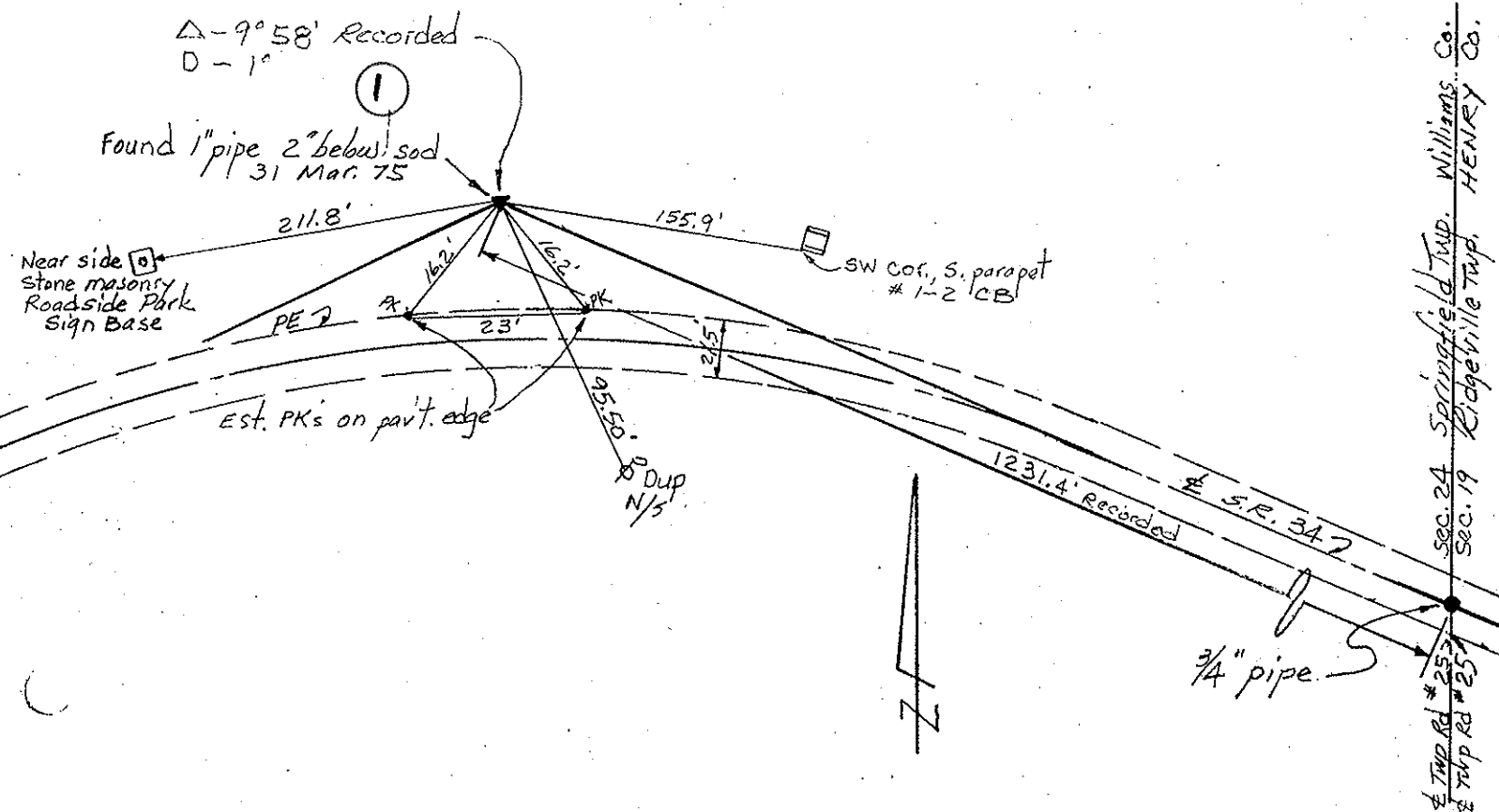
PERSONNEL	TITLE	PERSONNEL	TITLE
<u>Red Beach</u>			
<u>W. Knape</u>			

COUNTY HENRY-WILLIAMS DATE APR. 1975

S. R. 34 WEATHER \_\_\_\_\_

SEC. COUNTY LINE TEMP \_\_\_\_\_

DESCRIPTION CONTROL POINTS JOB NO. \_\_\_\_\_



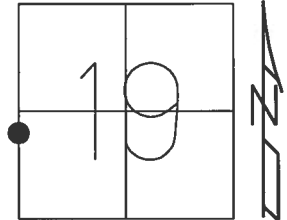
O.D.O.T. DISTRICT 2 SURVEY OFFICE (USE ONLY)

PERSONNEL \_\_\_\_\_ REFERENCE NO. 2 SHEET 1 OF 18

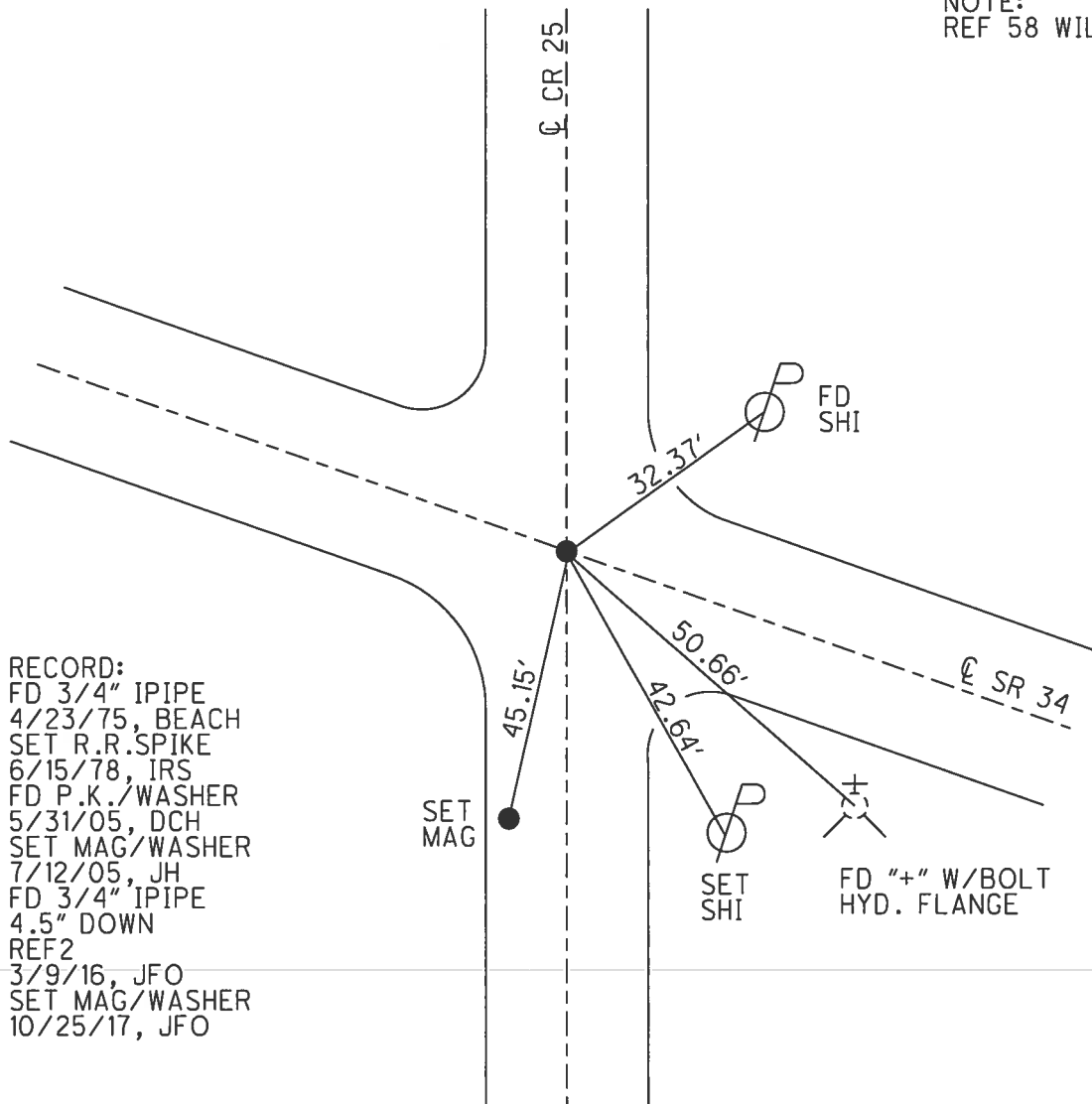
NOTES	<u>CARSON</u>	DATE	<u>5/16/17</u>	ROUTE	<u>SR 34</u>
H.C.	<u>HOMAN</u>	WEATHER	<u>CLOUDY</u>	COUNTY	<u>HENRY</u>
R.C.	<u>POORE</u>	TEMP.	<u>63°</u>	TOWNSHIP	<u>RIDGEVILLE</u>
	<u>RHOADES</u>			SECTION	<u>19</u>
				T	<u>6</u> N
				R	<u>5</u> E

TYPE MONUMENT 3/4" IPIPE  
~~ON SURFACE~~ - BELOW 4.5"  
~~LEFT~~ - CL PAV'T - RIGHT 1'  
11.2' TO RT EDGE PAVEMENT  
 S.L.M. 0+00

Grid: Northing: 659528.853 Easting: 1463711.330



NOTE:  
REF 58 WIL SR 34



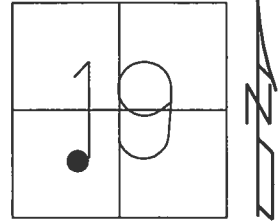
RECORD:  
 FD 3/4" IPIPE  
 4/23/75, BEACH  
 SET R.R.SPIKE  
 6/15/78, IRS  
 FD P.K./WASHER  
 5/31/05, DCH  
 SET MAG/WASHER  
 7/12/05, JH  
 FD 3/4" IPIPE  
 4.5" DOWN  
 REF2  
 3/9/16, JFO  
 SET MAG/WASHER  
 10/25/17, JFO

O.D.O.T. DISTRICT 2 SURVEY OFFICE (USE ONLY)

PERSONNEL \_\_\_\_\_ REFERENCE NO. 3 SHEET 2 OF 18

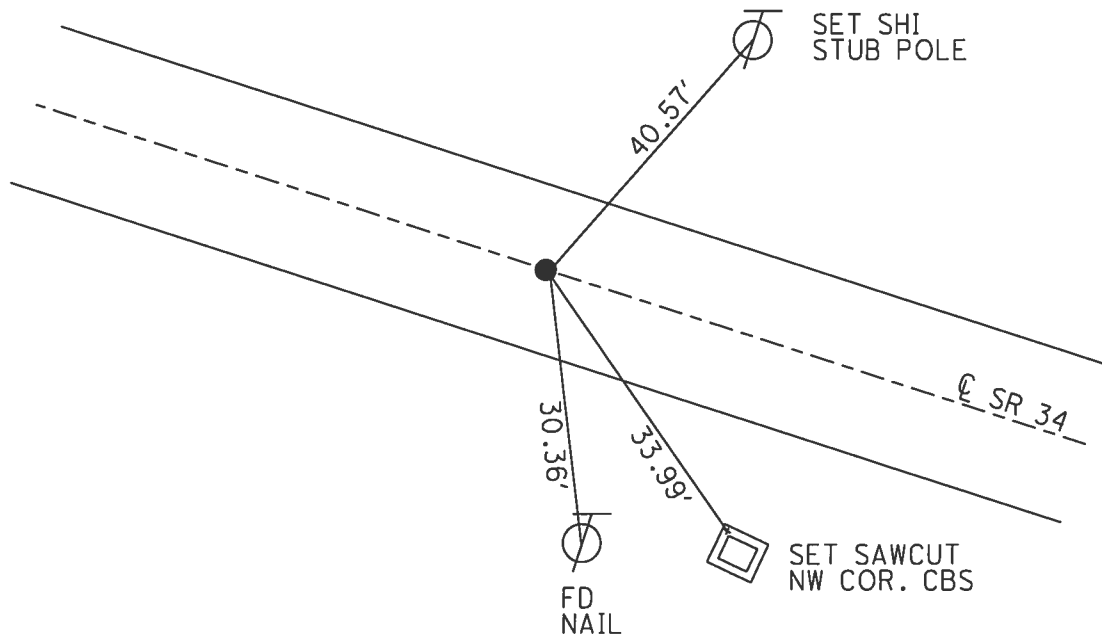
NOTES CARSON DATE 5/16/17 ROUTE SR 34  
 H.C. HOMAN WEATHER CLOUDY COUNTY HENRY  
 R.C. POORE TEMP. 63° TOWNSHIP RIDGEVILLE  
RHOADES SECTION 19  
T 6 N R 5 E

TYPE MONUMENT MAG/WASHER  
 ON SURFACE - ~~BELOW~~ ON  
 LEFT - ☉ PAV'T - RIGHT ON  
11.0' TO RT EDGE PAVEMENT  
 S.L.M. 14+28.60



Grid: Northing: 658979.314 Easting: 1465030.008

RECORD:  
 FD P.K./WASHER  
 5/31/05, DCH  
 SET MAG/WASHER  
 7/12/05, JH  
 FD MAG/WASHER  
 REF3  
 3/1/16, JFO  
 SET MAG/WASHER  
 10/25/17, JFO

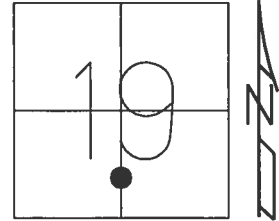


O.D.O.T. DISTRICT 2 SURVEY OFFICE (USE ONLY)

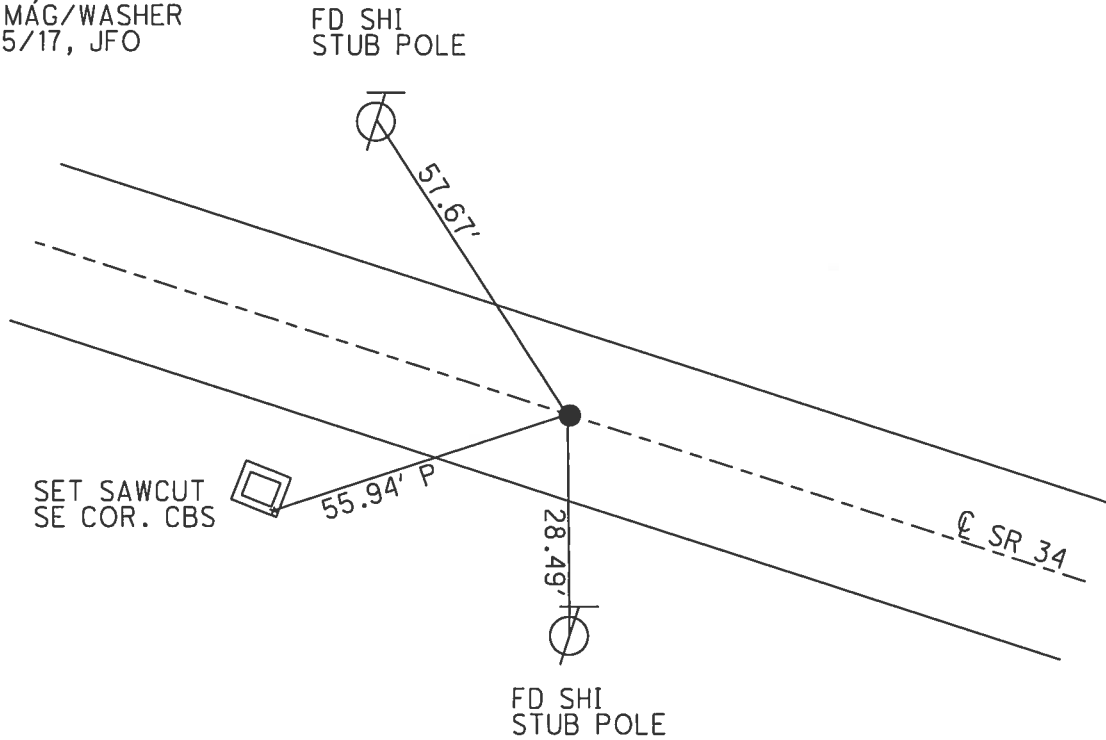
PERSONNEL \_\_\_\_\_ REFERENCE NO. 4 SHEET 3 OF 18

NOTES	<u>CARSON</u>	DATE	<u>5/16/17</u>	ROUTE	<u>SR 34</u>
H.C.	<u>HOMAN</u>	WEATHER	<u>CLOUDY</u>	COUNTY	<u>HENRY</u>
R.C.	<u>POORE</u>	TEMP.	<u>63°</u>	TOWNSHIP	<u>RIDGEVILLE</u>
	<u>RHOADES</u>			SECTION	<u>19</u>
				T	<u>6</u> N
				R	<u>5</u> E

TYPE MONUMENT MAG/WASHER  
 ON SURFACE - ~~BELOW~~ ON  
 LEFT - ☉ PAV'T - ~~RIGHT~~ 0.6'  
11' TO RT EDGE PAVEMENT  
 S.L.M. 34+83.85  
 Grid: Northing: 658195.382 Easting: 1466929.877



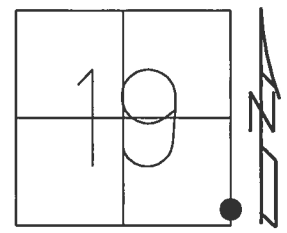
RECORD:  
 FD P.K./WASHER  
 5/31/05, DCH  
 SET MAG/WASHER  
 7/12/05, JH  
 FD MAG/WASHER  
 REF4  
 3/1/16, JFO  
 SET MAG/WASHER  
 10/25/17, JFO



O.D.O.T. DISTRICT 2 SURVEY OFFICE (USE ONLY)

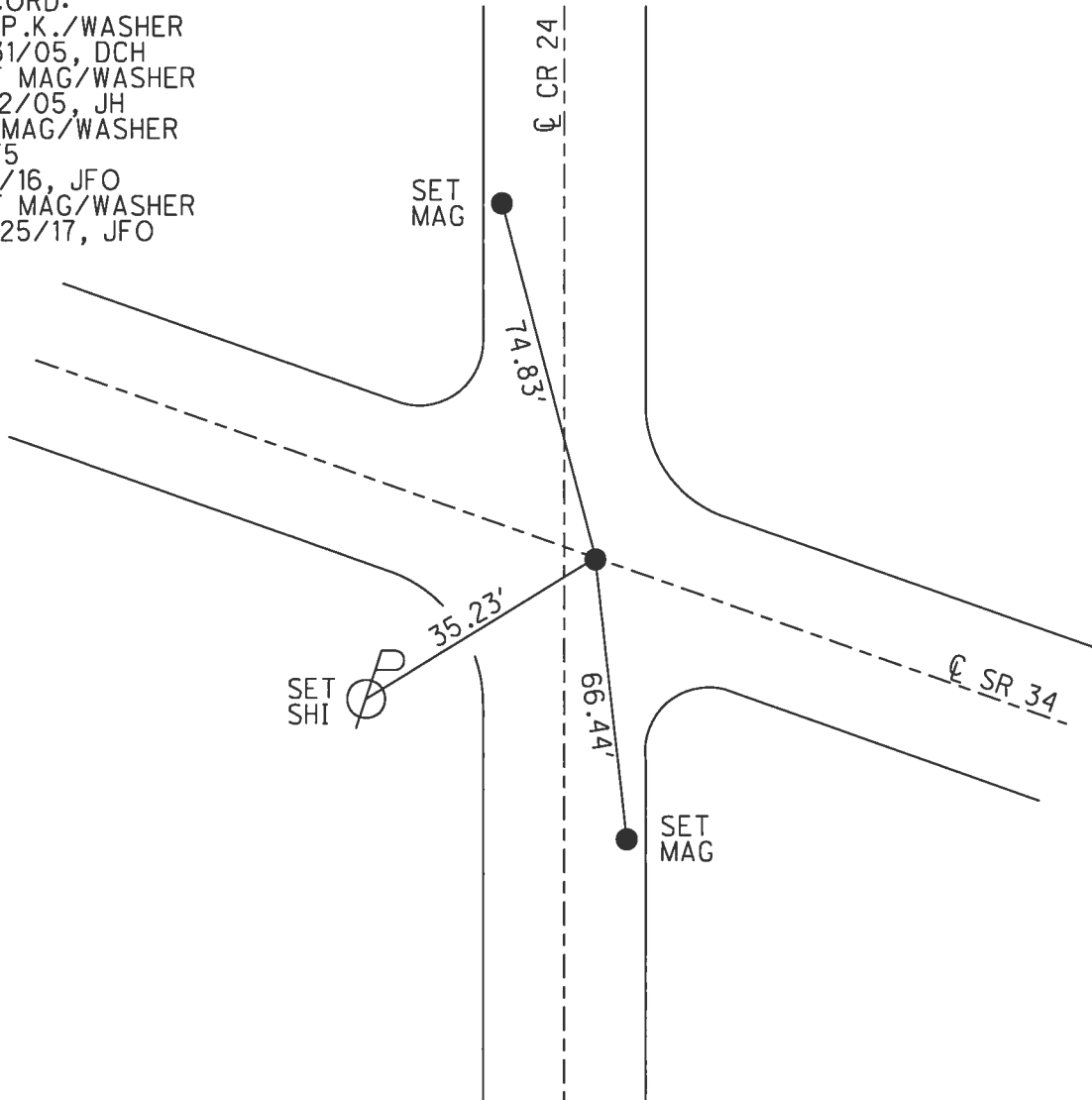
PERSONNEL \_\_\_\_\_ REFERENCE NO. 5 SHEET 4 OF 18  
 NOTES CARSON DATE 5/16/17 ROUTE SR 34  
 H.C. HOMAN WEATHER CLOUDY COUNTY HENRY  
 R.C. POORE TEMP. 63° TOWNSHIP RIDGEVILLE  
 \_\_\_\_\_ RHOADES \_\_\_\_\_ SECTION 19  
 \_\_\_\_\_ T 6 N R 5 E

TYPE MONUMENT MAG/WASHER  
 ON SURFACE - ~~BELOW~~ ON  
 LEFT - ☉ PAV'T - ~~RIGHT~~ 0.4', 2.3' E OF ☉ N&S  
- TO - EDGE PAVEMENT  
 S.L.M. 49+23.16



Grid: Northing: 657646.290 Easting: 1468260.332

RECORD:  
 FD P.K./WASHER  
 5/31/05, DCH  
 SET MAG/WASHER  
 7/12/05, JH  
 FD MAG/WASHER  
 REF5  
 3/1/16, JFO  
 SET MAG/WASHER  
 10/25/17, JFO

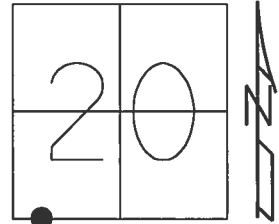


O.D.O.T. DISTRICT 2 SURVEY OFFICE (USE ONLY)

PERSONNEL \_\_\_\_\_ REFERENCE NO. 6 SHEET 5 OF 18

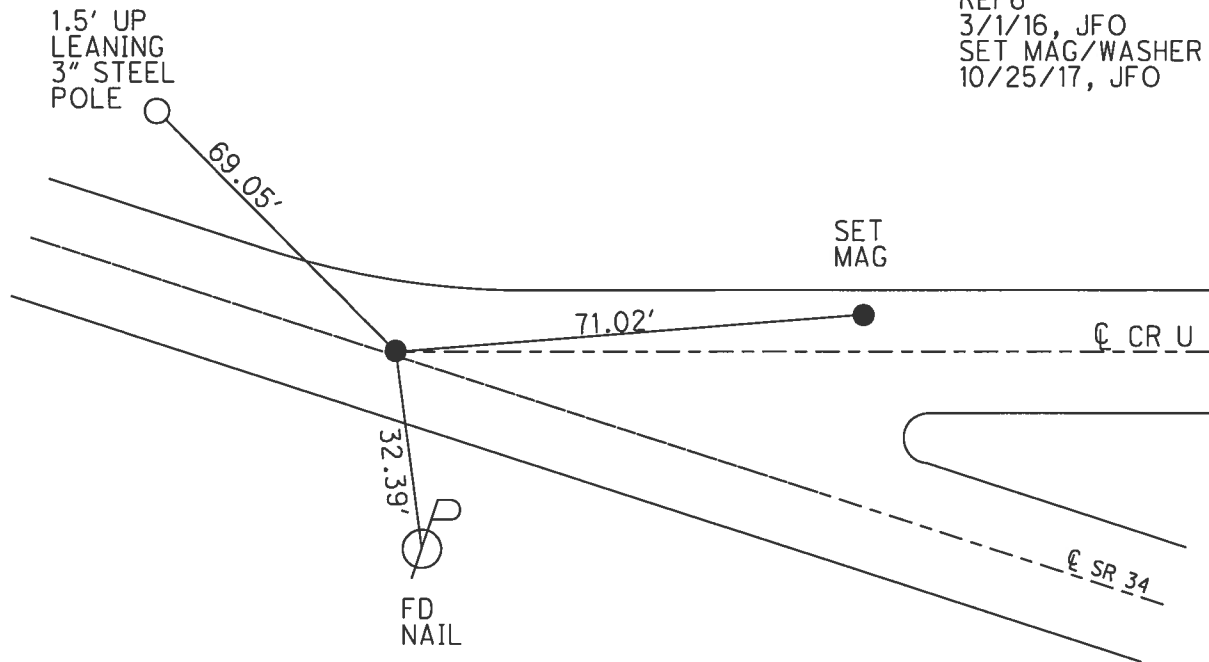
NOTES	<u>CARSON</u>	DATE	<u>5/16/17</u>	ROUTE	<u>SR 34</u>
H.C.	<u>HOMAN</u>	WEATHER	<u>CLOUDY</u>	COUNTY	<u>HENRY</u>
R.C.	<u>POORE</u>	TEMP.	<u>63°</u>	TOWNSHIP	<u>RIDGEVILLE</u>
	<u>RHOADES</u>			SECTION	<u>20</u>
				T	<u>6</u> N
				R	<u>5</u> E

TYPE MONUMENT MAG/WASHER  
 ON SURFACE - ~~BELOW~~ ON \_\_\_\_\_  
 LEFT - ☉ PAV'T - ~~RIGHT~~ 0.9'  
10.5' TO LT EDGE PAVEMENT  
 S.L.M. 56+33.19



Grid: Northing: 657371.041 Easting: 1468914.839

RECORD:  
 FD P.K./WASHER  
 5/31/05, DCH  
 SET MAG/WASHER  
 7/12/05, JH  
 FD MAG/WASHER  
 REF6  
 3/1/16, JFO  
 SET MAG/WASHER  
 10/25/17, JFO



O.D.O.T. DISTRICT 2 SURVEY OFFICE (USE ONLY)

PERSONNEL \_\_\_\_\_ REFERENCE NO. 7 SHEET 6 OF 18

NOTES CARSON DATE 5/16/17 ROUTE SR 34  
 H.C. HOMAN WEATHER CLOUDY COUNTY HENRY  
 R.C. POORE TEMP. 63° TOWNSHIP RIDGEVILLE  
 \_\_\_\_\_ SECTION 29  
 \_\_\_\_\_ T 6 N R 5 E

TYPE MONUMENT MAG/WASHER

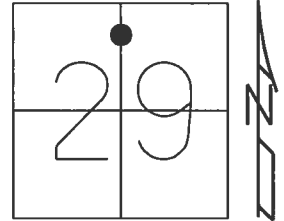
ON SURFACE - ~~BELOW~~ ON \_\_\_\_\_

~~LEFT~~ - ☉ PAV'T - RIGHT 2.6'

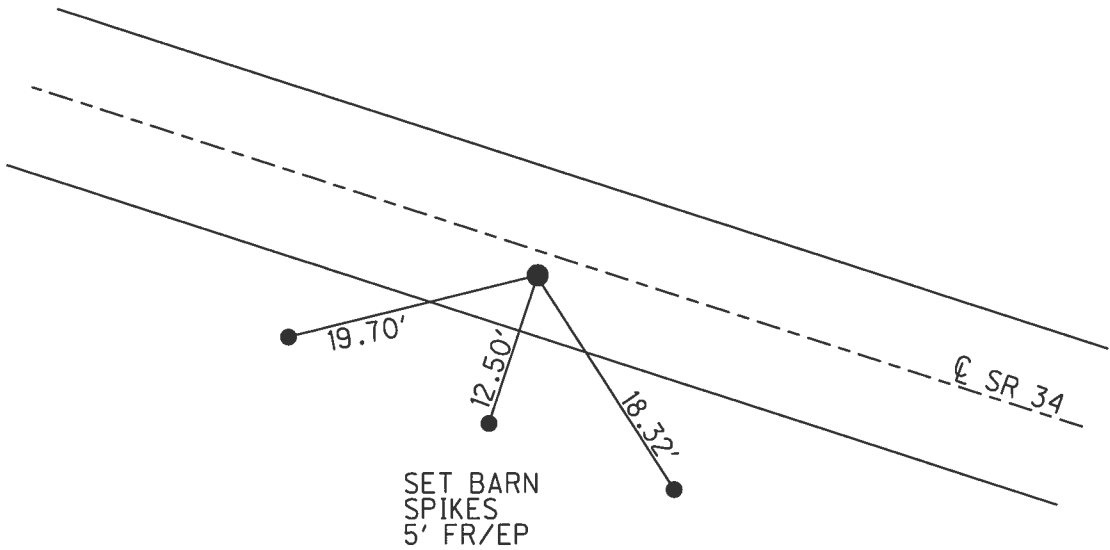
9.5' TO RT EDGE PAVEMENT

S.L.M. 74+42.01

Grid: Northing: 656669.772 Easting: 1470582.186



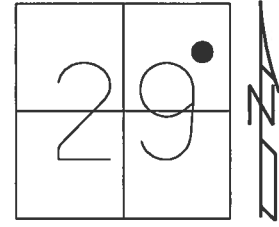
RECORD: P.I.  
 $\Delta = 1^\circ 21' \text{ LT}$   
 $D = 0^\circ 30'$   
 $T = 135.01$   
 $R = 1459.16'$   
 FD P.K./WASHER  
 5/31/05, DCH  
 SET MAG/WASHER  
 7/12/05, JH  
 FD MAG/WASHER  
 REF7  
 3/1/16, JFO  
 SET MAG/WASHER  
 10/25/17, JFO



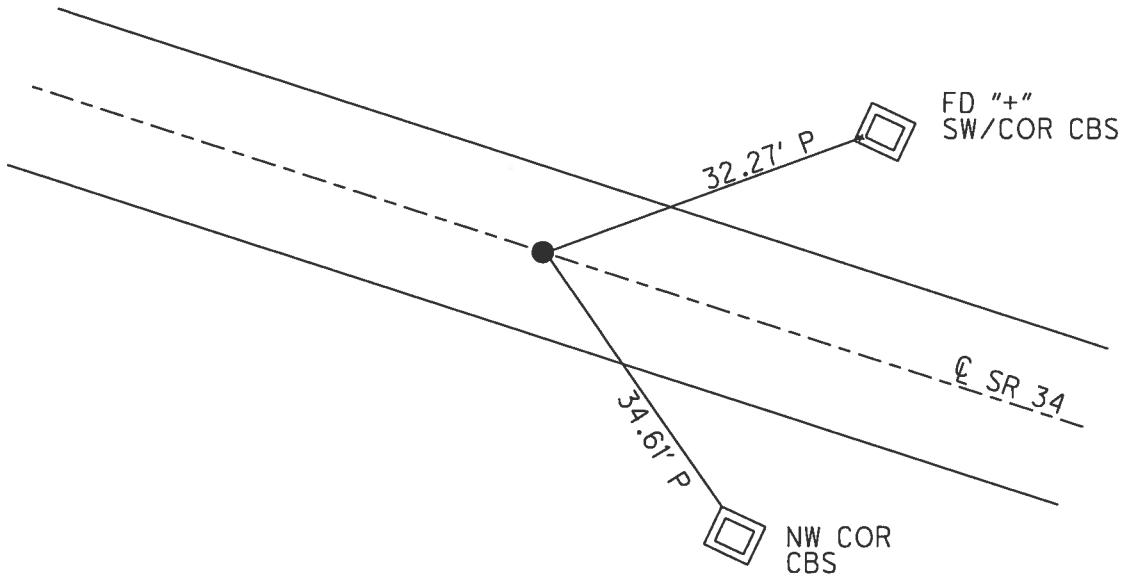
O.D.O.T. DISTRICT 2 SURVEY OFFICE (USE ONLY)

PERSONNEL \_\_\_\_\_ REFERENCE NO. 7 A SHEET 7 OF 18  
 NOTES CARSON DATE 5/16/17 ROUTE SR 34  
 H.C. HOMAN WEATHER CLOUDY COUNTY HENRY  
 R.C. POORE TEMP. 65° TOWNSHIP RIDGEVILLE  
RHOADES SECTION 29  
 T 6 N R 5 E

TYPE MONUMENT MAG/WASHER  
 ON SURFACE - ~~BELOW~~ ON \_\_\_\_\_  
 LEFT - ☉ PAV'T - RIGHT ON \_\_\_\_\_  
11.1' TO RT EDGE PAVEMENT  
 S.L.M. 92+02.58  
 Grid: Northing: 656025.404 Easting: 1472220.595



RECORD: P.I.  
 $\Delta = 0^\circ 16' RT$   
 FD P.K./WASHER  
 5/31/05, DCH  
 SET MAG/WASHER  
 7/12/05, JH  
 FD MAG/WASHER  
 REFAT  
 3/1/16, JFO  
 SET MAG/WASHER  
 10/25/17, JFO



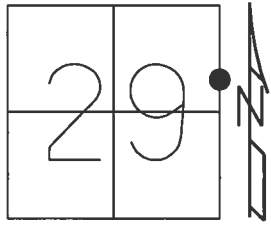


**O.D.O.T. DISTRICT 2 SURVEY OFFICE (USE ONLY)**

PERSONNEL \_\_\_\_\_ REFERENCE NO. 8 SHEET 8 OF 18

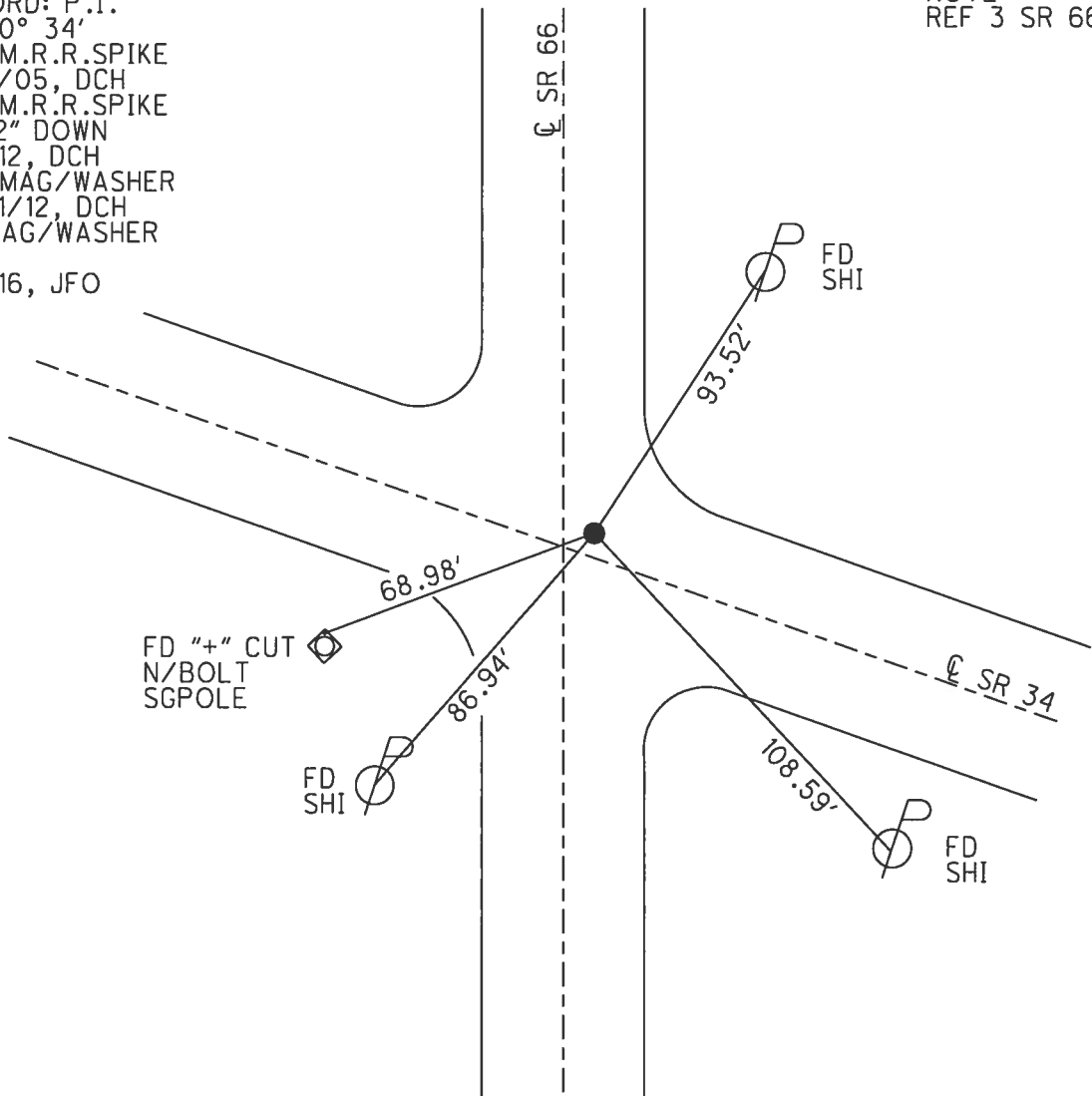
NOTES	<u>CARSON</u>	DATE	<u>5/16/17</u>	ROUTE	<u>SR 34</u>
H.C.	<u>HOMAN</u>	WEATHER	<u>CLOUDY</u>	COUNTY	<u>HENRY</u>
R.C.	<u>POORE</u>	TEMP.	<u>65°</u>	TOWNSHIP	<u>RIDGEVILLE</u>
	<u>RHOADES</u>			SECTION	<u>29</u>
				T	<u>6</u> N
				R	<u>5</u> E

TYPE MONUMENT MAG/WASHER  
 ON SURFACE - ~~BELOW~~ ON \_\_\_\_\_  
~~LEFT~~ - ℄ PAV'T - RIGHT 0.5'  
 - TO - EDGE PAVEMENT  
 S.L.M. 106+19.07  
 Grid: Northing: 655500.898 Easting: 1473536.400



RECORD: P.I.  
 $\Delta = 0^\circ 34'$   
 FD SM.R.R.SPIKE  
 5/31/05, DCH  
 FD SM.R.R.SPIKE  
 3 1/2" DOWN  
 6/1/12, DCH  
 SET MAG/WASHER  
 10/31/12, DCH  
 FD MAG/WASHER  
 REF8  
 3/1/16, JFO

NOTE:  
 REF 3 SR 66

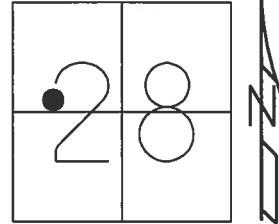


O.D.O.T. DISTRICT 2 SURVEY OFFICE (USE ONLY)

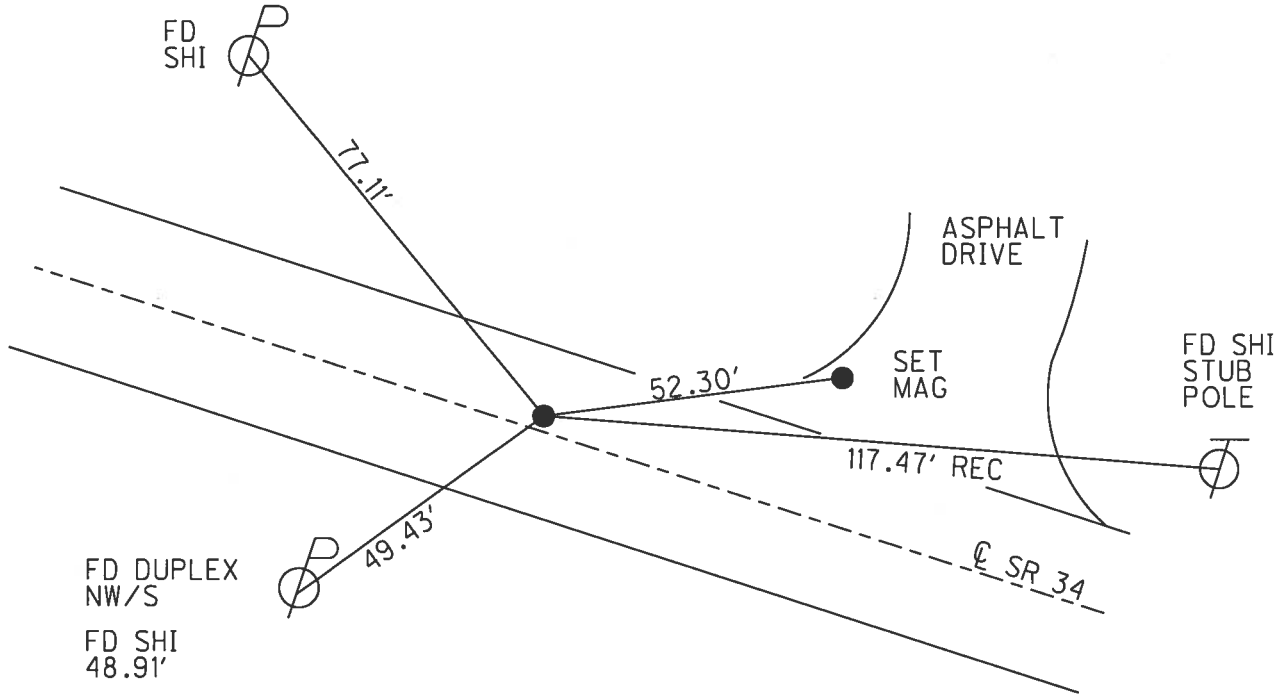
PERSONNEL \_\_\_\_\_ REFERENCE NO. 9 SHEET 9 OF 18

NOTES CARSON DATE 5/16/17 ROUTE SR 34  
 H.C. HOMAN WEATHER CLOUDY COUNTY HENRY  
 R.C. POORE TEMP. 71° TOWNSHIP RIDGEVILLE  
RHOADES SECTION 28  
 T 6 N R 5 E

TYPE MONUMENT SM.R.R.SPIKE  
~~ON SURFACE~~ - BELOW 3"  
 LEFT - ☉ PAV'T - ~~RIGHT~~ 1.1'  
9.8' TO LT EDGE PAVEMENT  
 S.L.M. 120+38.98  
 Grid: Northing: 654961.789 Easting: 1474850.878



RECORD:  
 FD SM.R.R.SPIKE  
 5/16/17, DCH  
 SET MAG/WASHER  
 NEWREF9  
 10/25/17, JFO

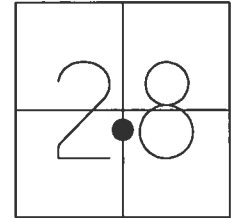


O.D.O.T. DISTRICT 2 SURVEY OFFICE (USE ONLY)

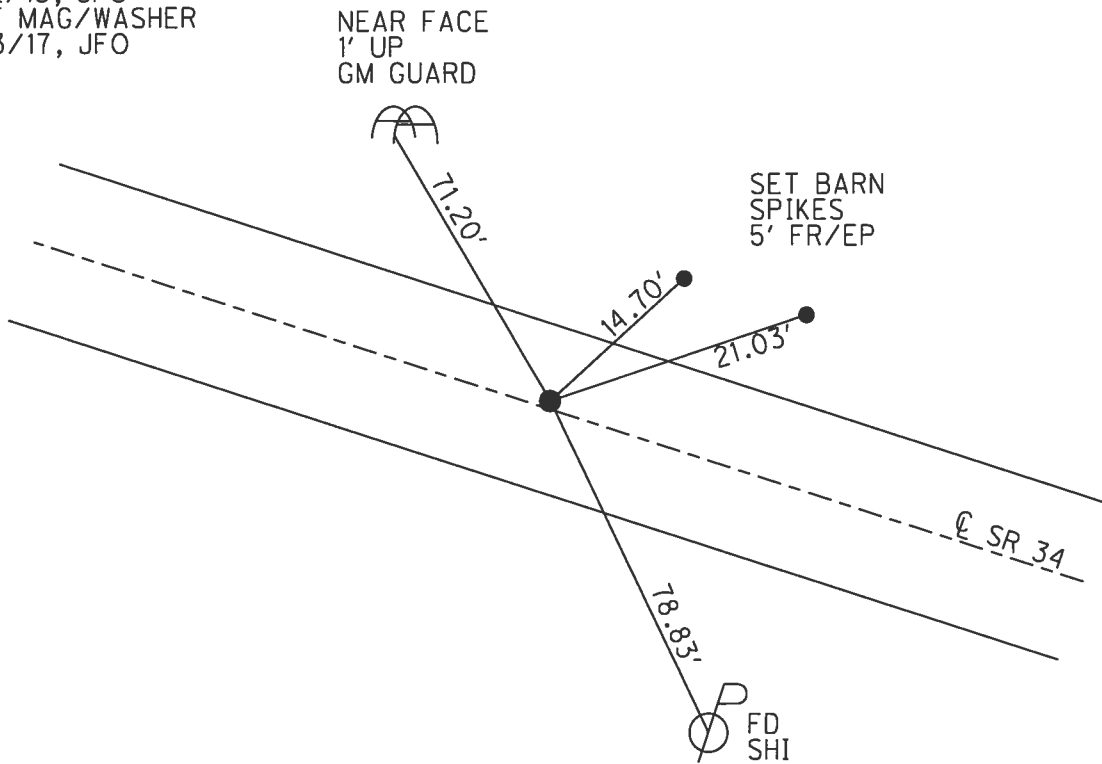
PERSONNEL \_\_\_\_\_ REFERENCE NO. 10 SHEET 10 OF 18

NOTES	<u>CARSON</u>	DATE	<u>5/16/17</u>	ROUTE	<u>SR 34</u>
H.C.	<u>HOMAN</u>	WEATHER	<u>CLOUDY</u>	COUNTY	<u>HENRY</u>
R.C.	<u>POORE</u>	TEMP.	<u>63°</u>	TOWNSHIP	<u>RIDGEVILLE</u>
	<u>RHOADES</u>			SECTION	<u>28</u>
				T	<u>6</u> N
				R	<u>5</u> E

TYPE MONUMENT MAG/WASHER  
 ON SURFACE - ~~BELOW~~ ON  
 LEFT - ☉ PAV'T - ~~RIGHT~~ 0.8'  
 - TO - EDGE PAVEMENT  
 S.L.M. 129+91.71  
 Grid: Northing: 654589.861 Easting: 1475727.120



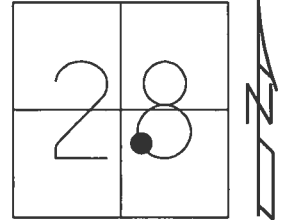
RECORD:  
 FD P.K./WASHER  
 5/31/05, DCH  
 SET MAG/WASHER  
 7/11/05, DCH  
 FD MAG/WASHER  
 REF10  
 3/2/16, JFO  
 SET MAG/WASHER  
 11/3/17, JFO



O.D.O.T. DISTRICT 2 SURVEY OFFICE (USE ONLY)

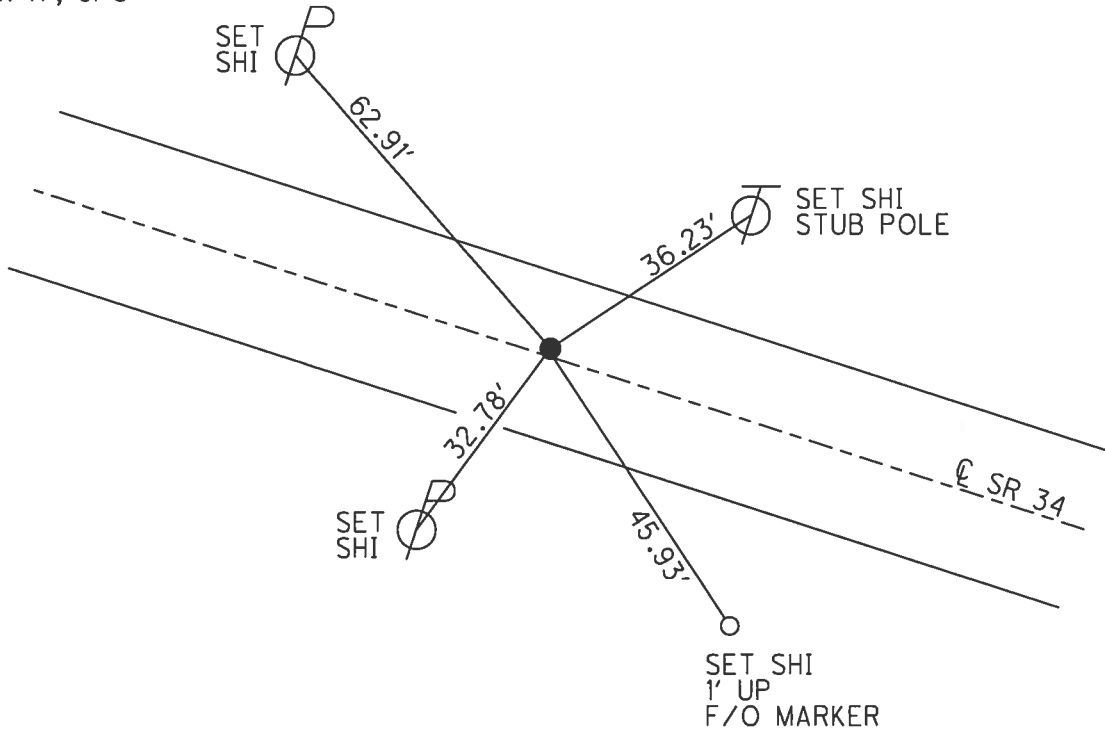
PERSONNEL \_\_\_\_\_ REFERENCE NO. 11 SHEET 11 OF 18  
 NOTES CARSON DATE 5/16/17 ROUTE SR 34  
 H.C. HOMAN WEATHER CLOUDY COUNTY HENRY  
 R.C. POORE TEMP. 63° TOWNSHIP RIDGEVILLE  
 \_\_\_\_\_ SECTION 28  
 \_\_\_\_\_ T 6 N R 5 E

TYPE MONUMENT MAG NAIL SHANK  
 ON SURFACE - BELOW ON  
 LEFT - ☉ PAV'T - RIGHT 0.5'  
11.5' TO RT EDGE PAVEMENT  
 S.L.M. 134+55.47



Grid: Northings: 654408.634 Easting: 1476154.328

RECORD:  
 FD P.K./WASHER  
 5/31/05, DCH  
 SET MAG/WASHER  
 7/11/05, JH  
 FD MAG NAIL SHANK  
 REF11  
 3/2/16, JFO  
 SET MAG/WASHER  
 11/3/17, JFO

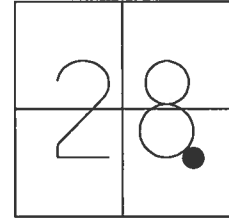


O.D.O.T. DISTRICT 2 SURVEY OFFICE (USE ONLY)

PERSONNEL \_\_\_\_\_ REFERENCE NO. 11 A SHEET 12 OF 18

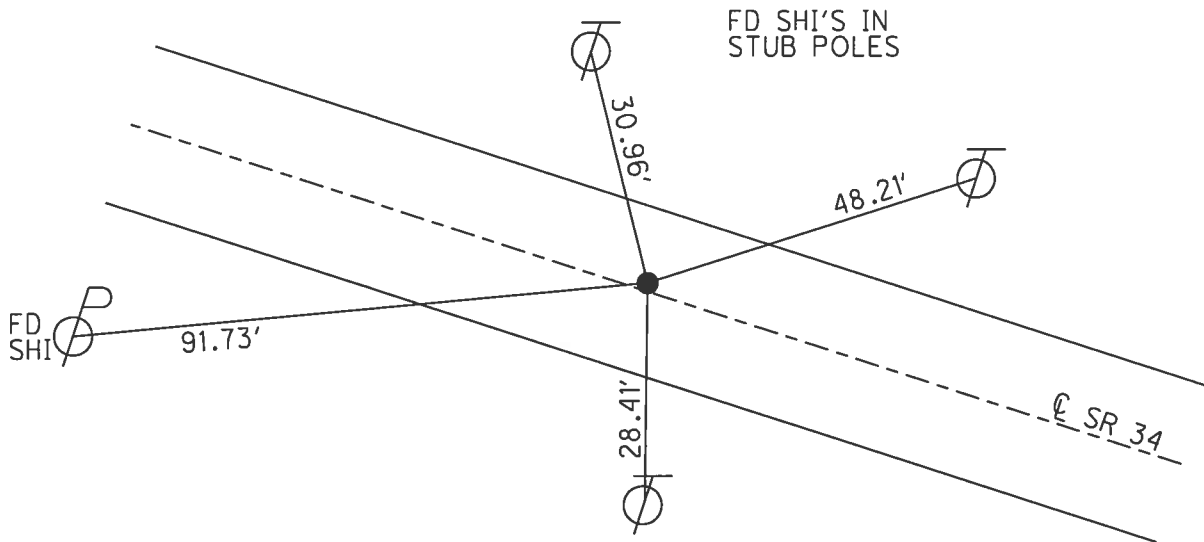
NOTES	<u>CARSON</u>	DATE	<u>5/16/17</u>	ROUTE	<u>SR 34</u>
H.C.	<u>HOMAN</u>	WEATHER	<u>CLOUDY</u>	COUNTY	<u>HENRY</u>
R.C.	<u>POORE</u>	TEMP.	<u>63°</u>	TOWNSHIP	<u>RIDGEVILLE</u>
	<u>RHOADES</u>			SECTION	<u>28</u>
				T	<u>6</u> N
				R	<u>5</u> E

TYPE MONUMENT MAG/WASHER  
 ON SURFACE - ~~BELOW~~ ON  
 LEFT - ☉ PAV'T - RIGHT ON  
11.4' TO RT EDGE PAVEMENT  
 S.L.M. 148+70.03



Grid: Northing: 653870.668 Easting: 1477462.271

RECORD:  
 FD P.K./WASHER  
 5/31/05, DCH  
 SET MAG/WASHER  
 7/12/05, JH  
 FD MAG/WASHER  
 REFA11  
 3/2/16, JFO  
 SET MAG/WASHER  
 11/3/17, JFO





O.D.O.T. DISTRICT 2 SURVEY OFFICE (USE ONLY)

PERSONNEL \_\_\_\_\_ REFERENCE NO. 12 A SHEET 14 OF 18

NOTES CARSON DATE 5/16/17 ROUTE SR 34  
 H.C. HOMAN WEATHER CLOUDY COUNTY HENRY  
 R.C. POORE TEMP. 63° TOWNSHIP RIDGEVILLE  
RHOADES SECTION 27  
 T 6 N R 5 E

TYPE MONUMENT MAG/WASHER

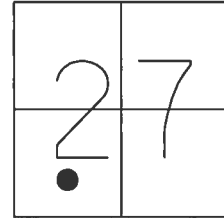
ON SURFACE - ~~BELOW~~ ON \_\_\_\_\_

LEFT - ☉ PAV'T - ~~RIGHT~~ 0.9'

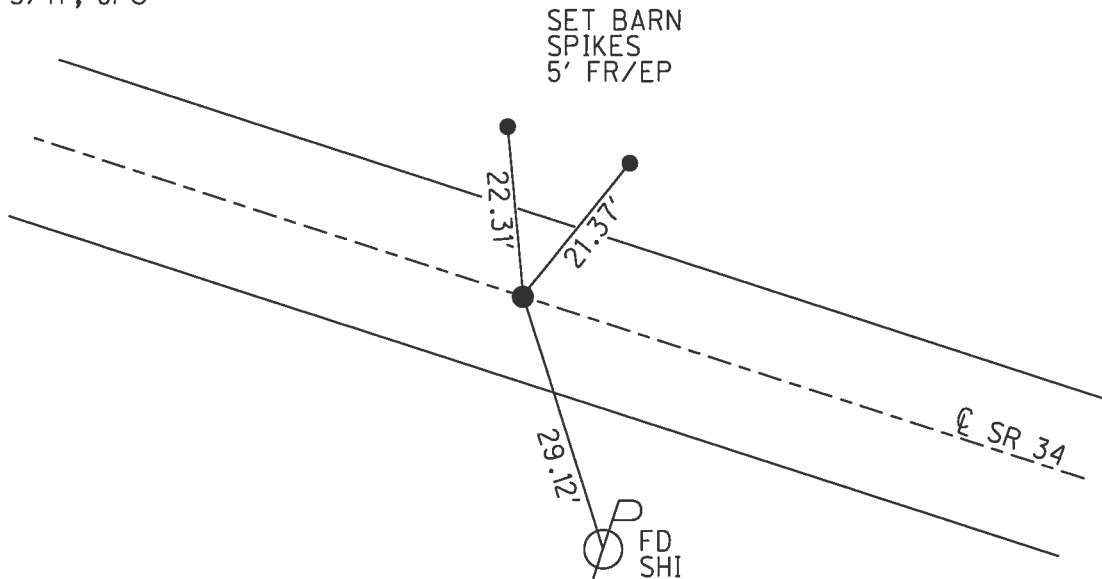
10' TO LT EDGE PAVEMENT

S.L.M. 178+17.22

Grid: Northing: 652761.536 Easting: 1480193.309



RECORD: P.I.  
 $\Delta = 0^\circ 27' \text{ RT}$   
 FD P.K./WASHER  
 5/31/05, DCH  
 SET MAG/WASHER  
 7/11/05, JH  
 FD MAG/WASHER  
 REFA12  
 3/2/16, JFO  
 SET MAG/WASHER  
 11/3/17, JFO



O.D.O.T. DISTRICT 2 SURVEY OFFICE (USE ONLY)

PERSONNEL

REFERENCE NO. 12 B

SHEET 1 OF 4

NOTES MILLER

DATE 6/6/19

ROUTE SR 34

H.C. LEU

WEATHER CLOUDY

COUNTY HENRY

R.C. MILLER

TEMP. 63°

TOWNSHIP RIDGEVILLE

DWG BY MILLER

PID 107059

SECTION 27

T 6 N R 5 E

TYPE MONUMENT MAG/WASHER

ON SURFACE - BELOW ON

OFFSET Q PAVEMENT 1.5' LT : ~~RT~~

9.7' TO LT EDGE PAVEMENT

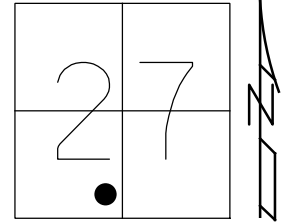
STATION: 191+46.43

HORZ. DATUM: NAD83 2011

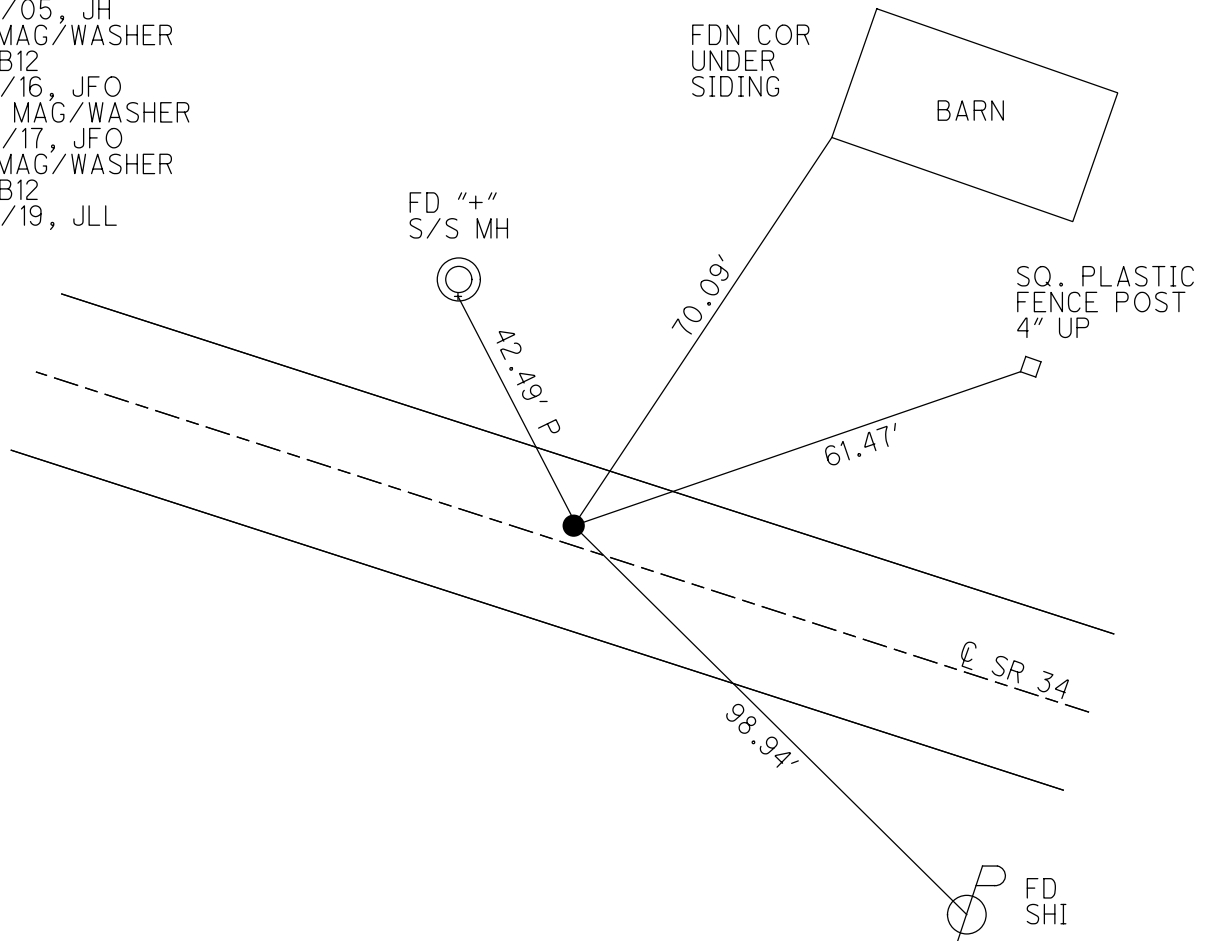
GEOID: 2012A

GRID: NORTHING: 652257.166

EASTING: 1481422.570



RECORD:  
 FD P.K./WASHER  
 5/31/05, DCH  
 SET MAG/WASHER  
 7/11/05, JH  
 FD MAG/WASHER  
 REFB12  
 3/2/16, JFO  
 SET MAG/WASHER  
 11/3/17, JFO  
 FD MAG/WASHER  
 REFB12  
 6/6/19, JLL

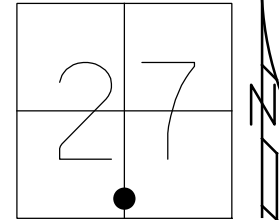




O.D.O.T. DISTRICT 2 SURVEY OFFICE (USE ONLY)

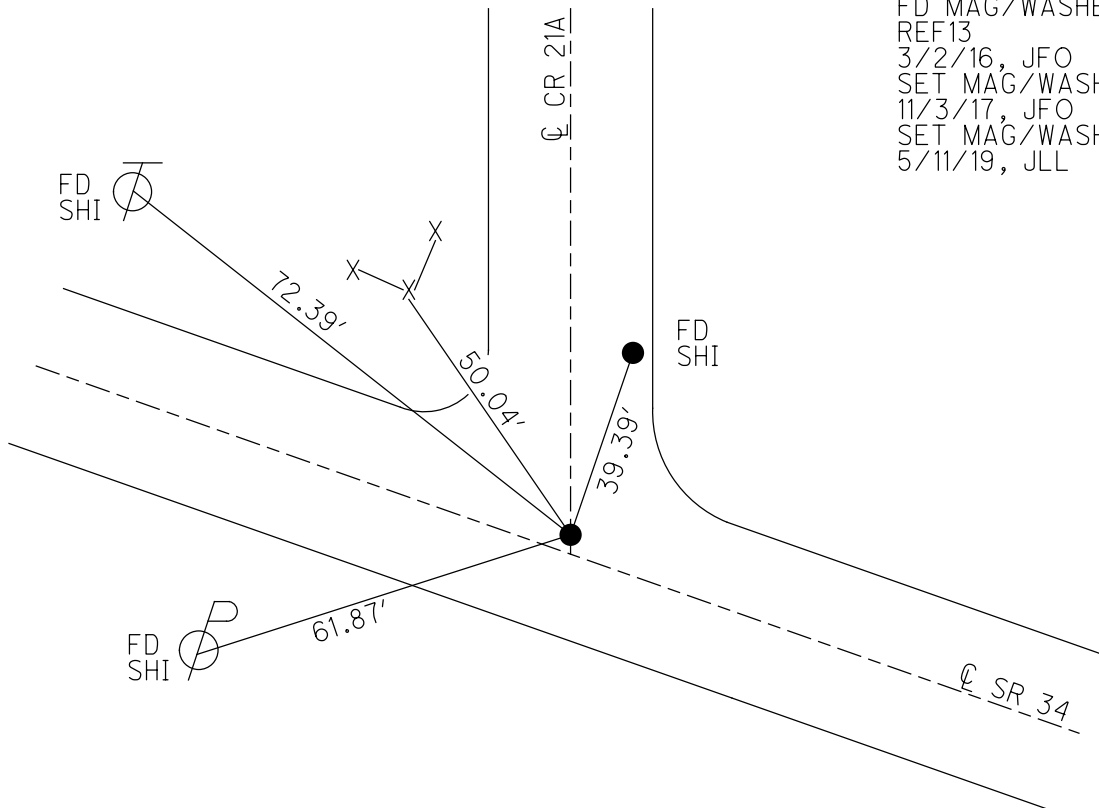
PERSONNEL \_\_\_\_\_ REFERENCE NO. 13 SHEET 2 OF 4  
 NOTES MILLER DATE 6/6/19 ROUTE SR 34  
 H.C. LEU WEATHER CLOUDY COUNTY HENRY  
 R.C. MILLER TEMP. 63° TOWNSHIP RIDGEVILLE  
 DWG BY MILLER PID 107059 SECTION 27  
 T 6 N R 5 E

TYPE MONUMENT MAG/WASHER  
 ON SURFACE - BELOW ON  
 OFFSET  $\text{C}$  PAVEMENT 2.2' LT : ~~RT~~  
13.5' TO RT EDGE PAVEMENT  
 STATION: 195+36.96



HORZ. DATUM: NAD83 2011 GEOID: 2012A  
 GRID: NORTHING: 652108.945 EASTING: 1481783.812

RECORD: P.I.  
 $\Delta = 1^\circ 00' \text{ RT}$   
 FD P.K./WASHER  
 5/31/05, DCH  
 SET MAG/WASHER  
 7/12/05, JH  
 FD MAG/WASHER  
 REF13  
 3/2/16, JFO  
 SET MAG/WASHER  
 11/3/17, JFO  
 SET MAG/WASHER  
 5/11/19, JLL



O.D.O.T. DISTRICT 2 SURVEY OFFICE (USE ONLY)

PERSONNEL

REFERENCE NO. 14

SHEET 3 OF 4

NOTES MILLER

DATE 6/6/19

ROUTE SR 34

H.C. LEU

WEATHER CLOUDY

COUNTY HENRY

R.C. MILLER

TEMP. 63°

TOWNSHIP RIDGEVILLE

SECTION 27

DWG BY MILLER

PID 107059

T 6 N R 5 E

TYPE MONUMENT MAG/WASHER

ON SURFACE - BELOW ON

OFFSET  $\odot$  PAVEMENT 3.6' ~~LT~~ : RT

7' TO RT EDGE PAVEMENT

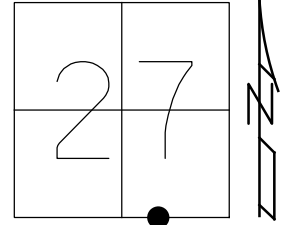
STATION: 202+29.69

HORZ.DATUM: NAD83 2011

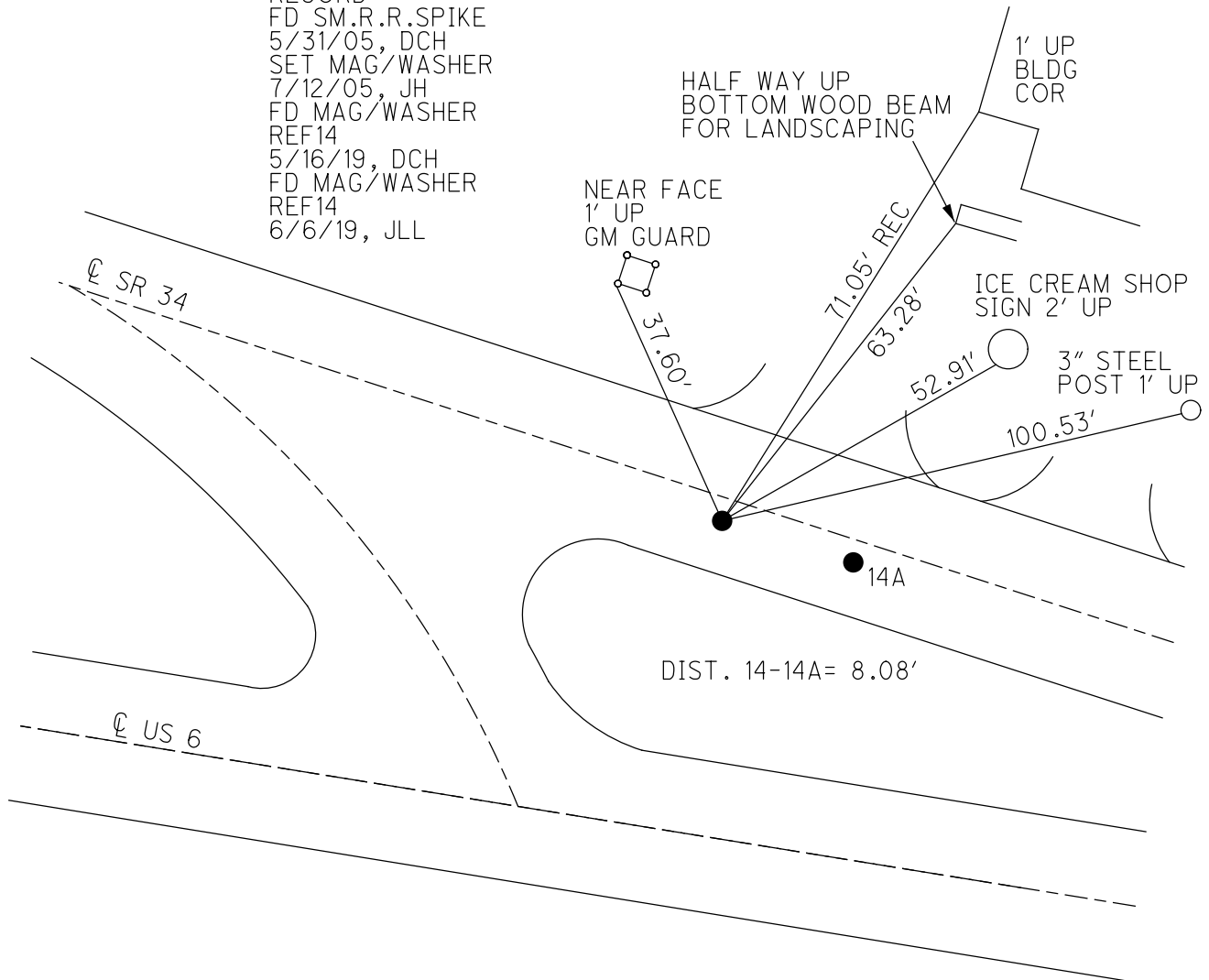
GEOID: 2012A

GRID: NORTHING: 651834.615

EASTING: 1482419.975



RECORD:  
 FD SM.R.R.SPIKE  
 5/31/05, DCH  
 SET MAG/WASHER  
 7/12/05, JH  
 FD MAG/WASHER  
 REF14  
 5/16/19, DCH  
 FD MAG/WASHER  
 REF14  
 6/6/19, JLL



O.D.O.T. DISTRICT 2 SURVEY OFFICE (USE ONLY)

PERSONNEL \_\_\_\_\_ REFERENCE NO. 14A SHEET 4 OF 4  
 NOTES MILLER DATE 6/6/19 ROUTE SR 34  
 H.C. LEU WEATHER CLOUDY COUNTY HENRY  
 R.C. MILLER TEMP. 63° TOWNSHIP RIDGEVILLE  
 DWG BY MILLER PID 107059 SECTION 27  
 T 6 N R 5 E

TYPE MONUMENT MAG/WASHER

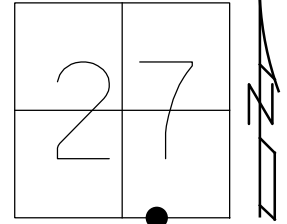
ON SURFACE - BELOW ON

OFFSET  $\odot$  PAVEMENT 3.4' ~~±~~ : RT  
7.1' TO RT EDGE PAVEMENT

STATION: 202+37.76

HORIZ.DATUM: NAD83 2011 GEOID: 2012A

GRID: NORTHING: 651831.609 EASTING: 1482427.469



RECORD:  
 FD P.K./WASHER  
 5/31/05, DCH  
 SET MAG/WASHER  
 7/12/05, JH  
 FD MAG/WASHER  
 REFA14  
 5/16/19, DCH  
 SET MAG/WASHER  
 5/11/19, JLL

