

O.D.O.T. DISTRICT 2 SURVEY OFFICE (USE ONLY)

PERSONNEL \_\_\_\_\_ REFERENCE NO. 3 SHEET 2 OF 18

NOTES CARSON DATE 5/16/17 ROUTE SR 34  
 H.C. HOMAN WEATHER CLOUDY COUNTY HENRY  
 R.C. POORE TEMP. 63° TOWNSHIP RIDGEVILLE  
RHOADES SECTION 19  
T 6 N R 5 E

TYPE MONUMENT MAG/WASHER

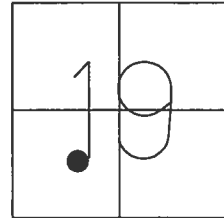
ON SURFACE - ~~BELOW~~ ON

LEFT - ☉ PAV'T - RIGHT ON

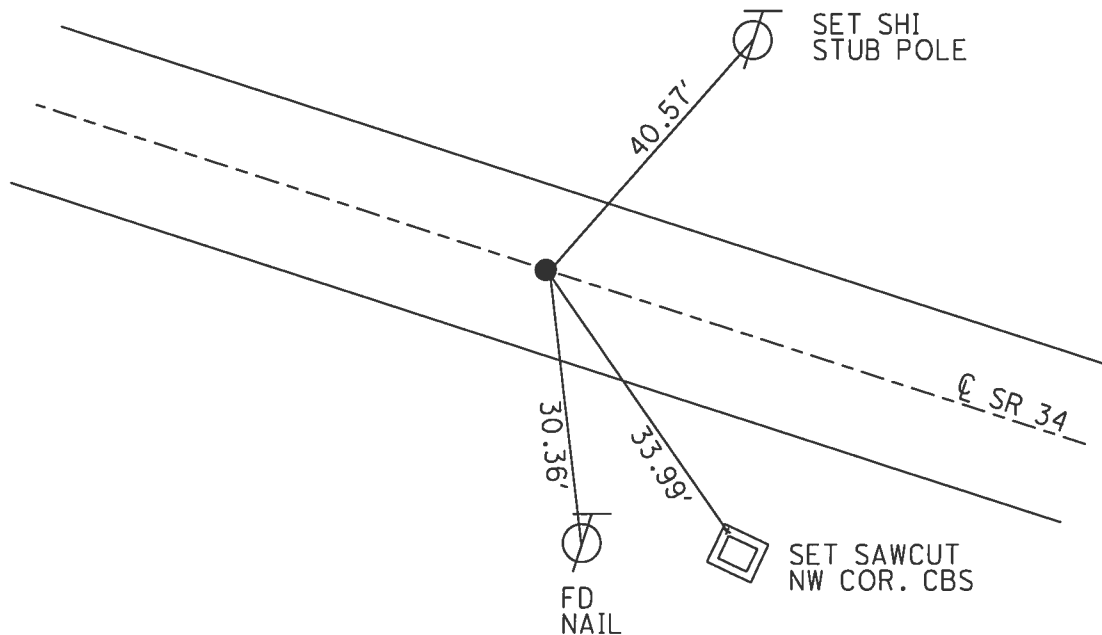
11.0' TO RT EDGE PAVEMENT

S.L.M. 14+28.60

Grid: Northing: 658979.314 Easting: 1465030.008



RECORD:  
 FD P.K./WASHER  
 5/31/05, DCH  
 SET MAG/WASHER  
 7/12/05, JH  
 FD MAG/WASHER  
 REF3  
 3/1/16, JFO  
 SET MAG/WASHER  
 10/25/17, JFO



O.D.O.T. DISTRICT 2 SURVEY OFFICE

PERSONNEL

REFERENCE NO. 3

SHEET 3 OF 18

NOTES HOMAN

DATE 5-31-05

ROUTE 34

H.C. HUSS

WEATHER SUNNY

COUNTY HENRY

R.C. HOMAN

TEMP. 80°

TOWNSHIP RIDGEVILLE

SECTION 19

T 6 N R 5 E

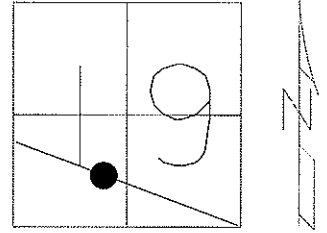
TYPE MONUMENT PK AND WASHER

ON SURFACE - ~~BELOW~~ ON

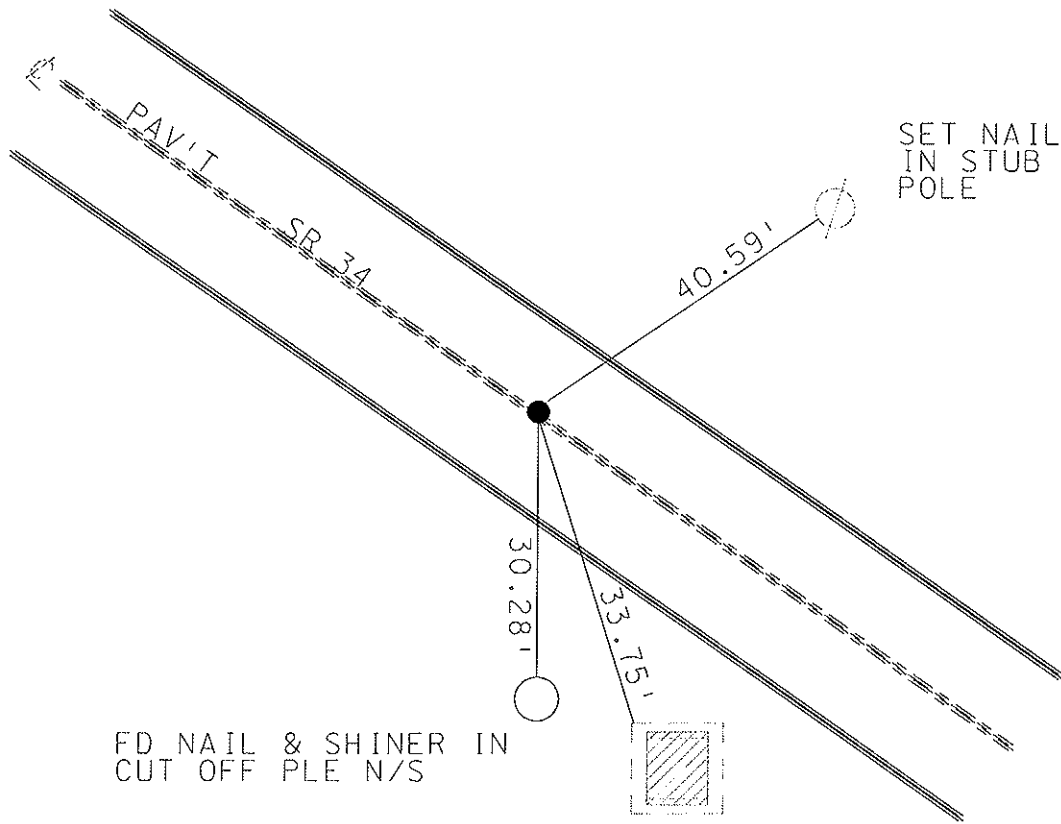
~~LEFT~~ - Q PAV'T - ~~RIGHT~~ ON

11.0' TO RT EDGE PAVEMENT

S.L.M. 14+26



SET MAG & WASHER  
JH 7-12-05



SET NAIL & SHINER  
IN STUB TELEPHONE  
POLE

FD NAIL & SHINER IN  
CUT OFF PLE N/S

NW CORNER  
OF CB CONC.

# O.D.O.T. DISTRICT 2 SURVEY OFFICE

PERSONNEL

REFERENCE NO. 3

SHEET 2 OF 18

NOTES CORDES

H.C. ROUSOS

R.C. HUSS

DATE 4-9-97

WEATHER SUN

TEMP. +2°C

ROUTE 34

COUNTY HENRY

TOWNSHIP RIDGEVILLE

SECTION 19

T 6 N R 5 E

Set P.K./WASHER

6-9-97

C.L.

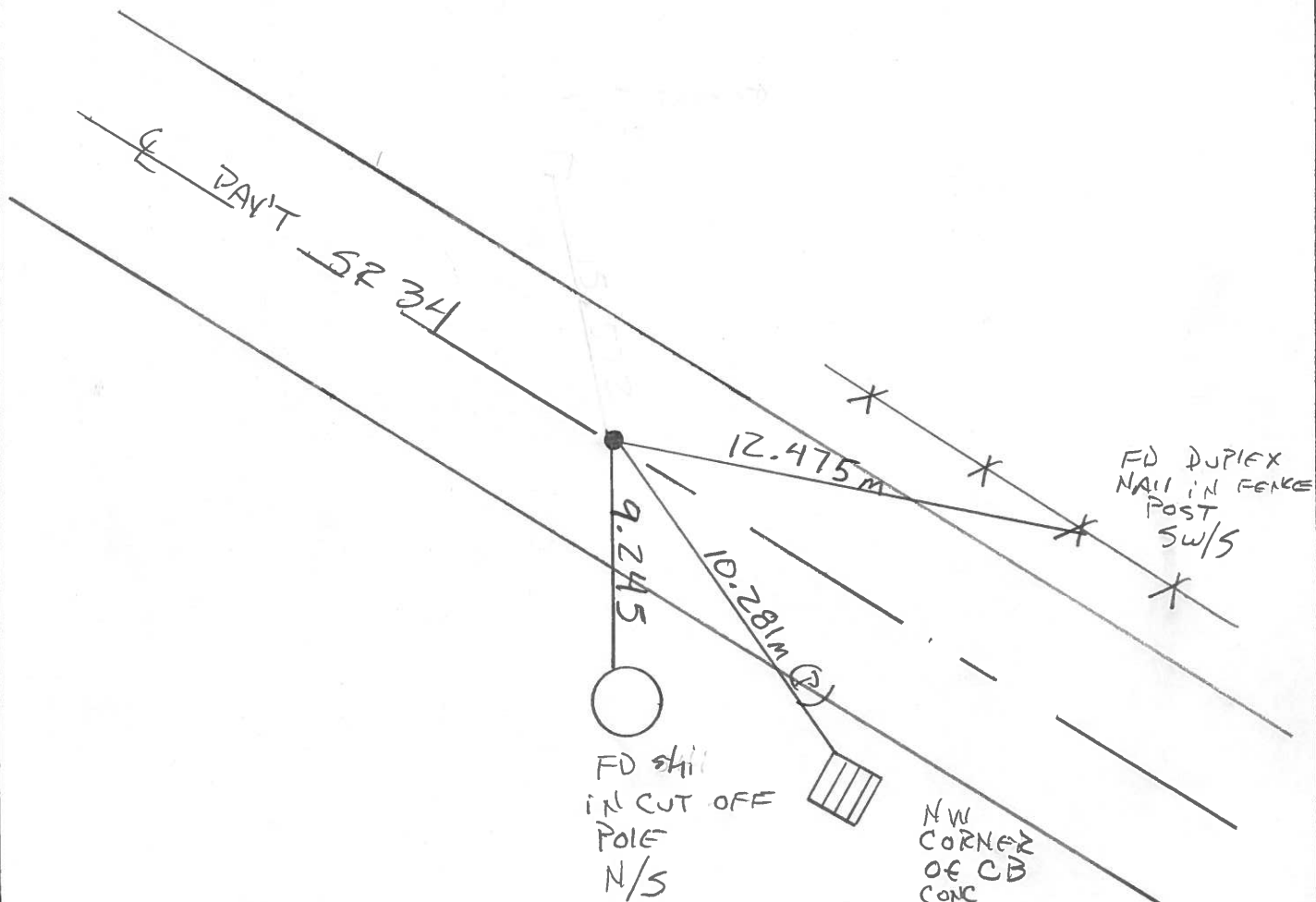
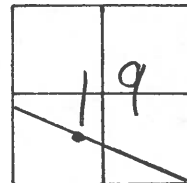
TYPE MONUMENT 5m RR SPIKE

~~SP~~ - BELOW 0.06m

~~PAV'T.~~ - ~~PAV'T.~~ YES

3.11m TO RT EDGE PAVEMENT

S.L.M. 0+437



# O.D.O.T. DISTRICT 2 SURVEY OFFICE

PERSONNEL

REFERENCE NO. 3

SHEET 2 OF       

NOTES J. HOUSEHOLDER

H.C. D. Curtis

DATE July 29, 1986

ROUTE S.R. 34

R.C. D. Michalak

WEATHER FAIR

COUNTY HENRY

I. Stone

TEMP. + 78°

TOWNSHIP Ridgeville

SECTION 19

T        R       

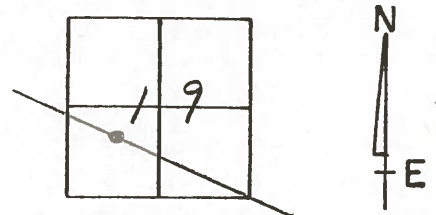
TYPE MONUMENT Sm. R.R. Spike

ON SURFACE - BELOW 2" below

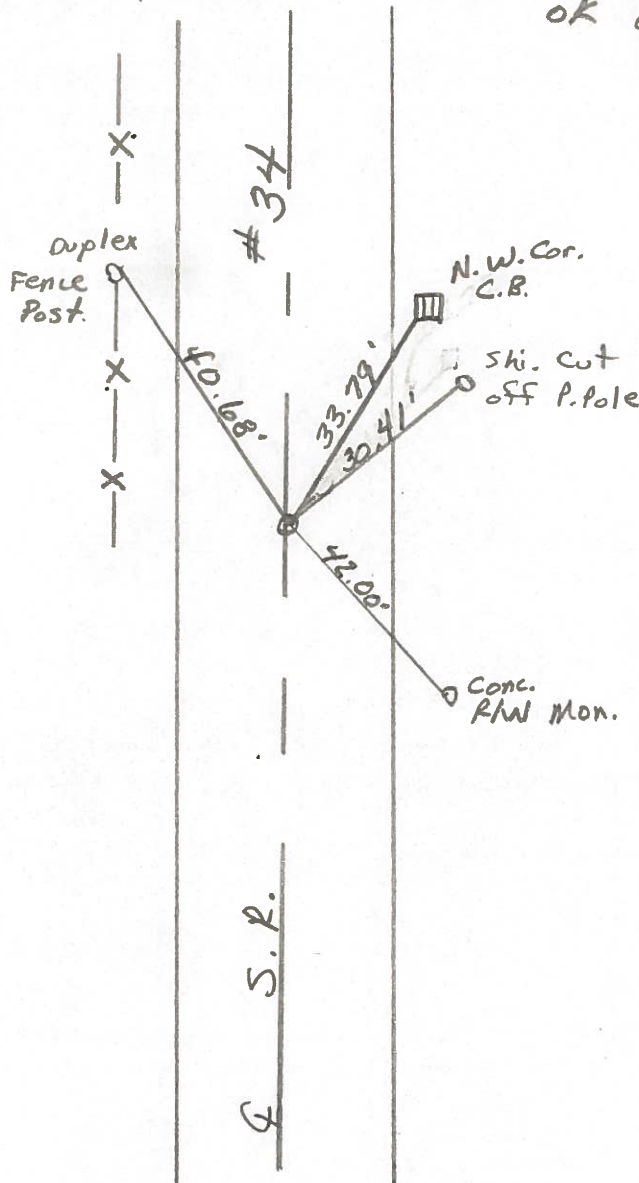
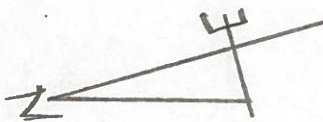
LEFT-   PAV'T. - RIGHT    PAV'T.

TO        EDGE PAVEMENT

S.L.M. 14+29



OK 8-28-86  
JAH



PERSONNEL TITLE PERSONNEL TITLE

COUNTY Henry DATE 14 June 78

Stacy \_\_\_\_\_

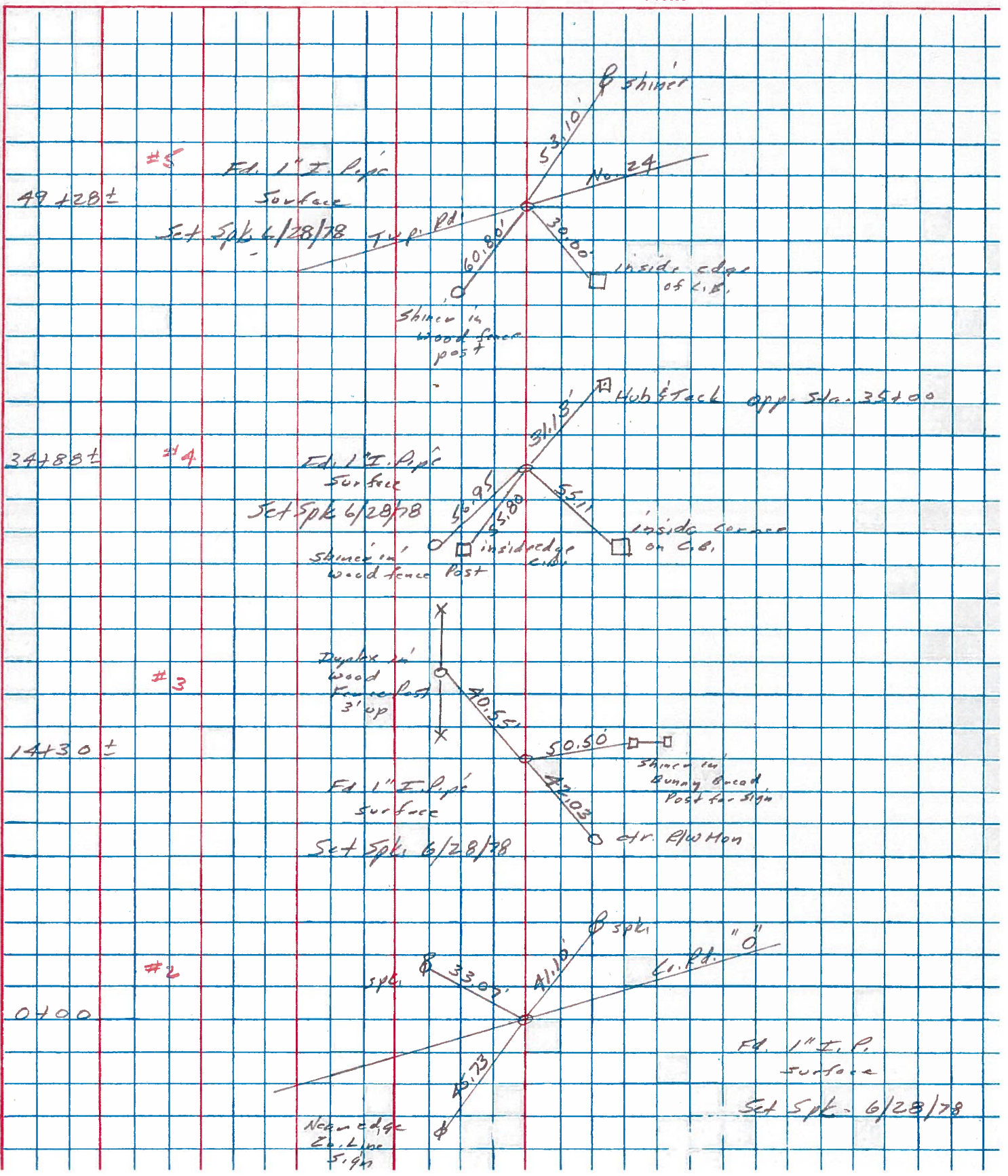
S. R. #34 WEATHER Clear

F \_\_\_\_\_

SEC. 0.00 TEMP. 72°

Carol \_\_\_\_\_

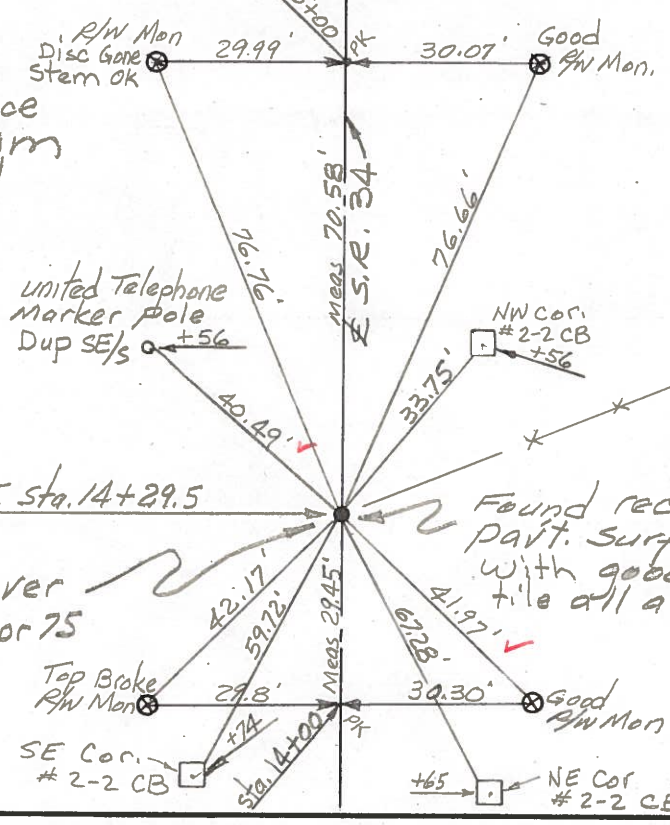
DESCRIPTION References to Control Points JOB NO. 023810



PERSONNEL	TITLE	PERSONNEL	TITLE	COUNTY	DATE	WEATHER	
Red Beach				HENRY	21 Apr 75		
W. Krape				S. R. 34			
				SEC.		TEMP.	
DESCRIPTION	CONTROL POINTS				JOB NO.		

6" Asphalt surface  
12" W.B. Macadam  
18" Total metal

3



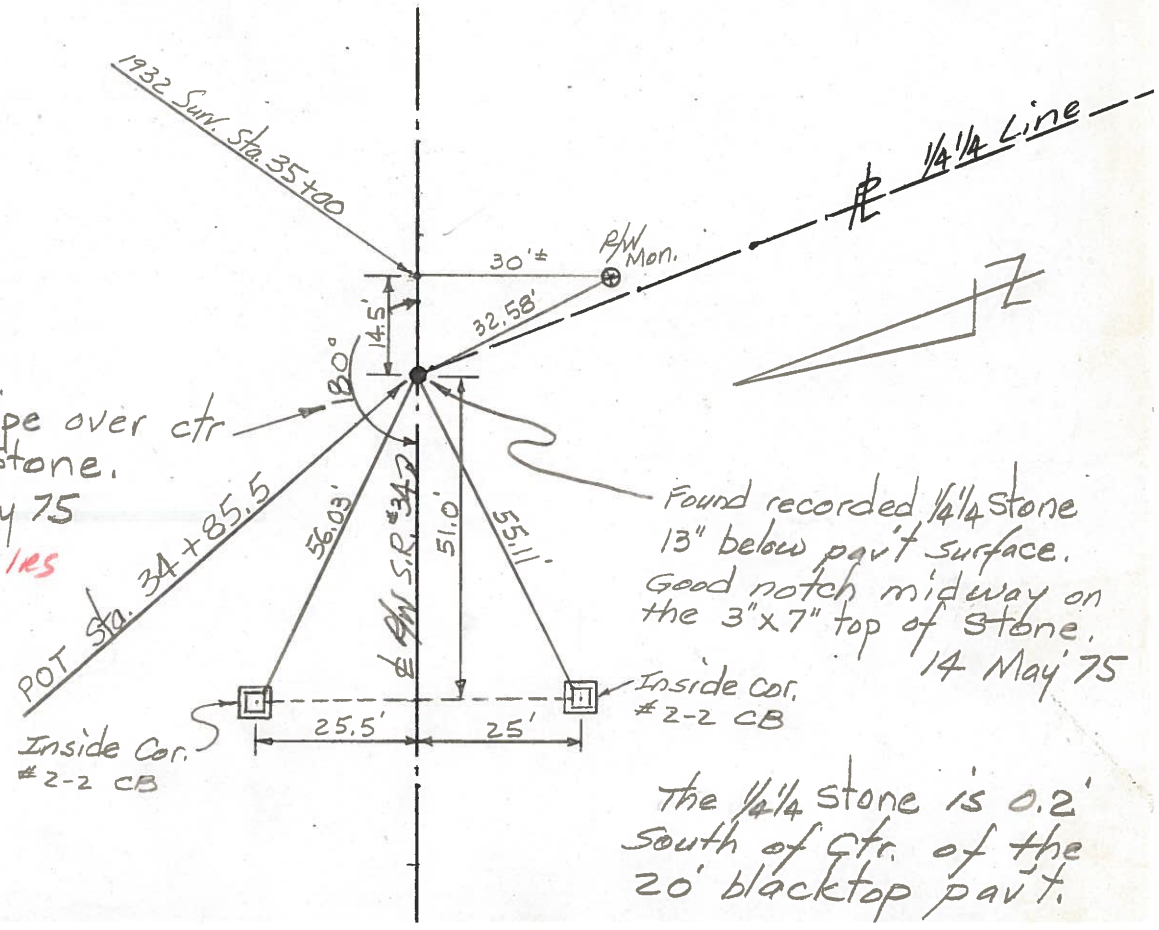
Est. 16" x 1" pipe over the stone 21 Apr 75

OK 6/15/78 lrs

Found recorded stone 29" below part. surface. Good stone with good E-W ridge. Found tile all around and above stone

This stone is 0.5' south of ctr. of the 20' pavement.

4



Est. 11" x 1" pipe over ctr of the 1/4" stone. 14 May 75

OK 6/15/78 lrs

Found recorded 1/4" stone 13" below part surface. Good notch midway on the 3" x 7" top of stone. 14 May 75

The 1/4" stone is 0.2' south of ctr. of the 20' blacktop part.