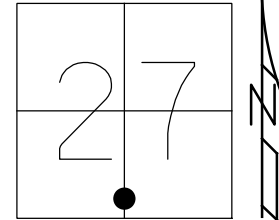


O.D.O.T. DISTRICT 2 SURVEY OFFICE (USE ONLY)

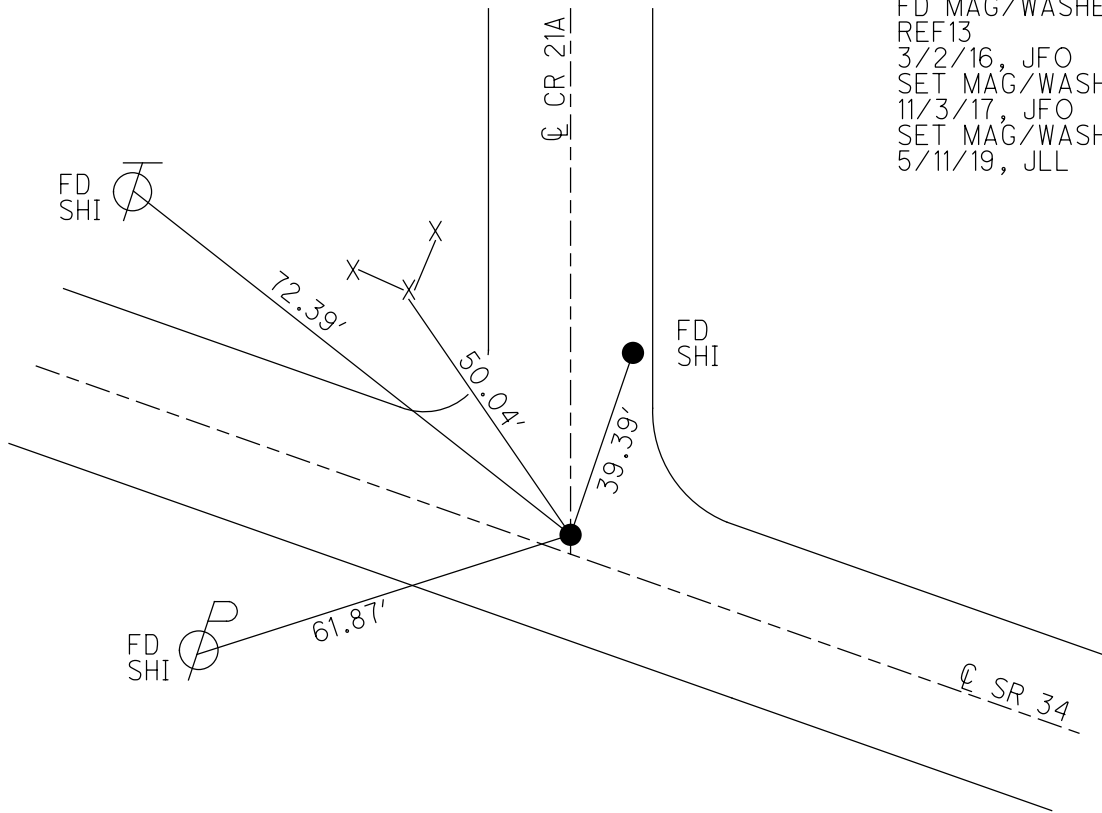
PERSONNEL \_\_\_\_\_ REFERENCE NO. 13 SHEET 2 OF 4  
 NOTES MILLER DATE 6/6/19 ROUTE SR 34  
 H.C. LEU WEATHER CLOUDY COUNTY HENRY  
 R.C. MILLER TEMP. 63° TOWNSHIP RIDGEVILLE  
 DWG BY MILLER PID 107059 SECTION 27  
 T 6 N R 5 E

TYPE MONUMENT MAG/WASHER  
 ON SURFACE - BELOW ON  
 OFFSET  $\text{C}$  PAVEMENT 2.2' LT : ~~RT~~  
13.5' TO RT EDGE PAVEMENT  
 STATION: 195+36.96



HORZ. DATUM: NAD83 2011 GEOID: 2012A  
 GRID: NORTHING: 652108.945 EASTING: 1481783.812

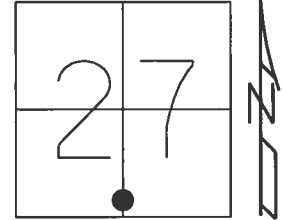
RECORD: P.I.  
 $\Delta = 1^\circ 00' \text{ RT}$   
 FD P.K./WASHER  
 5/31/05, DCH  
 SET MAG/WASHER  
 7/12/05, JH  
 FD MAG/WASHER  
 REF13  
 3/2/16, JFO  
 SET MAG/WASHER  
 11/3/17, JFO  
 SET MAG/WASHER  
 5/11/19, JLL



O.D.O.T. DISTRICT 2 SURVEY OFFICE (USE ONLY)

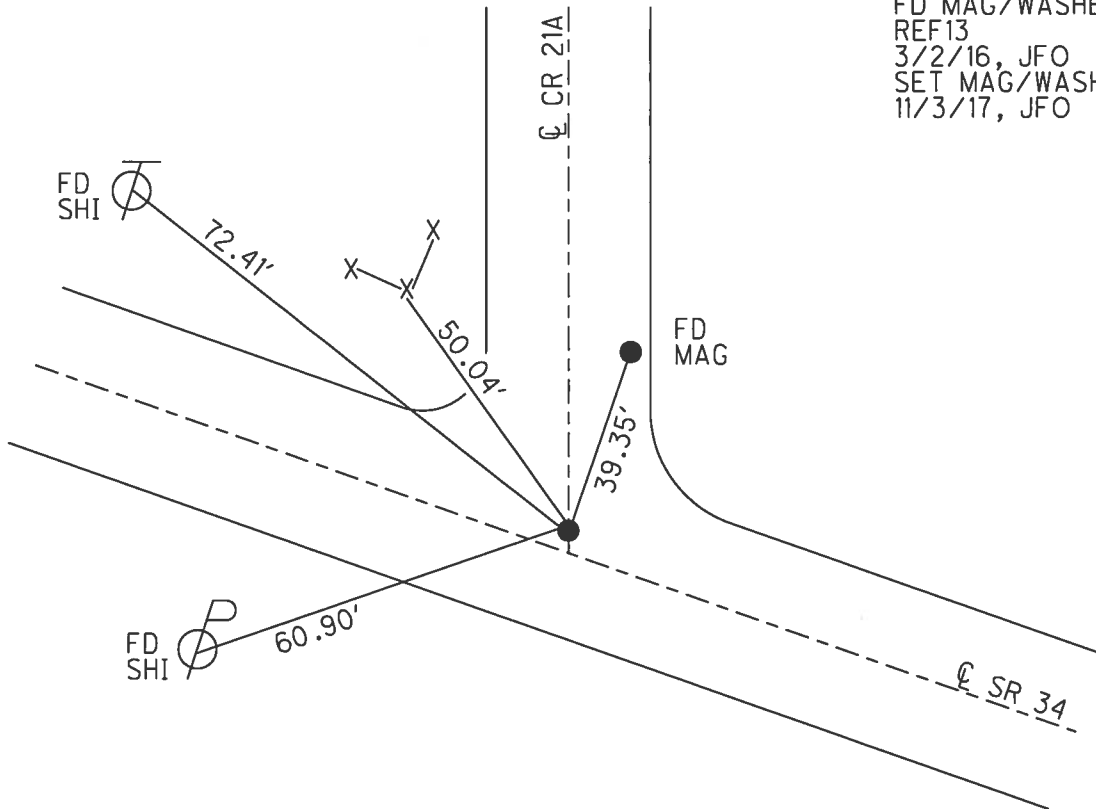
PERSONNEL \_\_\_\_\_ REFERENCE NO. 13 SHEET 16 OF 18  
 NOTES CARSON DATE 5/16/17 ROUTE SR 34  
 H.C. HOMAN WEATHER CLOUDY COUNTY HENRY  
 R.C. POORE TEMP. 63° TOWNSHIP RIDGEVILLE  
RHOADES SECTION 27  
 T 6 N R 5 E

TYPE MONUMENT MAG/WASHER  
 ON SURFACE - ~~BELOW~~ ON \_\_\_\_\_  
 LEFT - ℄ PAV'T - ~~RIGHT~~ 2.2'  
13.5' TO RT EDGE PAVEMENT  
 S.L.M. 195+36.96



Grid: Northing: 652109.029 Easting: 1481783.907

RECORD: P.I.  
 $\Delta = 1^\circ 00' RT$   
 FD P.K./WASHER  
 5/31/05, DCH  
 SET MAG/WASHER  
 7/12/05, JH  
 FD MAG/WASHER  
 REF13  
 3/2/16, JFO  
 SET MAG/WASHER  
 11/3/17, JFO



O.D.O.T. DISTRICT 2 SURVEY OFFICE

PERSONNEL

REFERENCE NO. 13

SHEET 17 OF 18

NOTES HOMAN

DATE 5-31-05

ROUTE 34

H.C. HUSS

WEATHER SUNNY

COUNTY HENRY

R.C. HOMAN

TEMP. 65°

TOWNSHIP BRIDGEVILLE

SECTION 27

T 6 N R 5 E

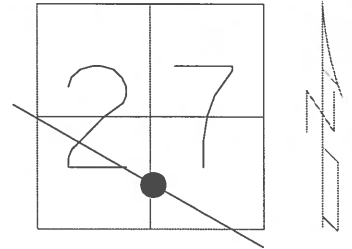
TYPE MONUMENT PK AND WASHER

ON SURFACE ~~-BELOW~~ YES

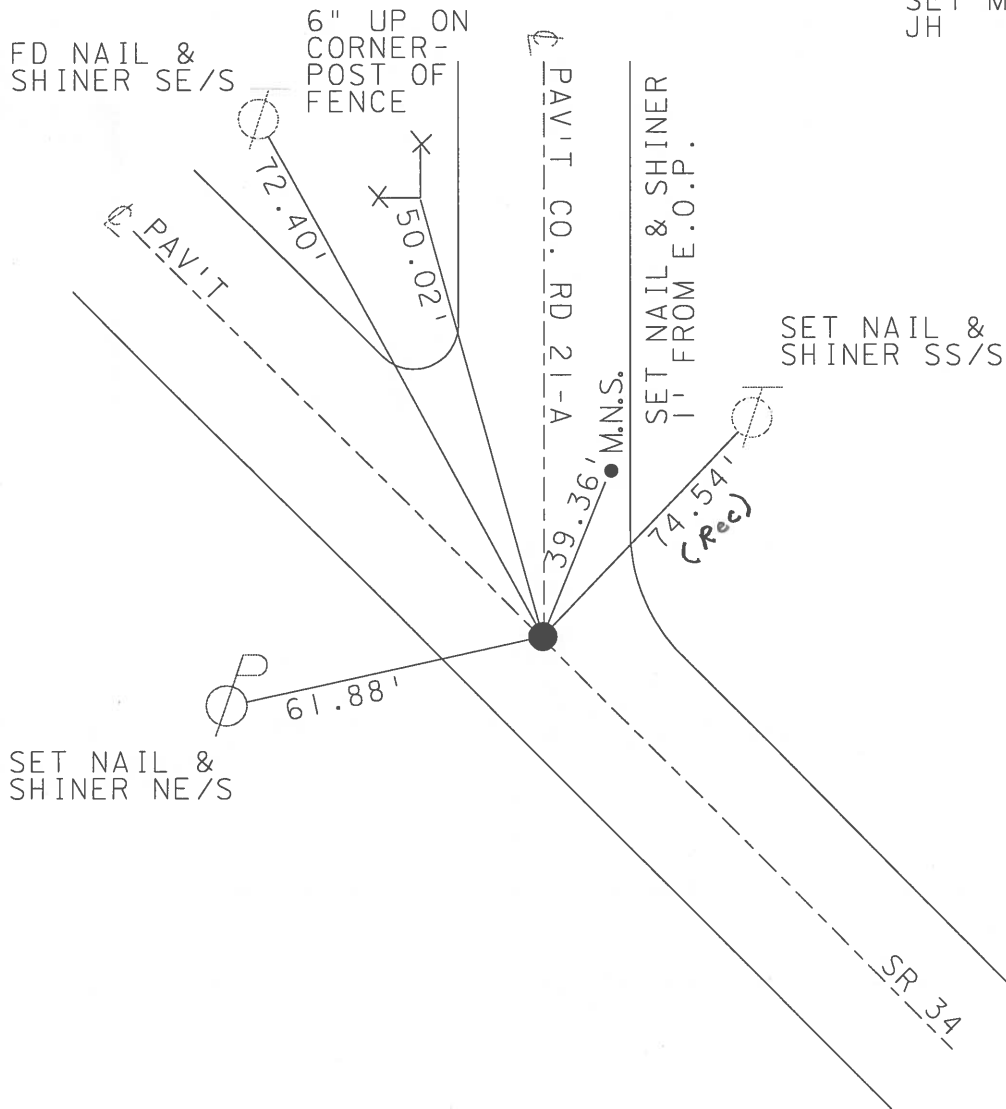
LEFT - Q PAV'T ~~-RIGHT~~ 2.2 FT LEFT

13.5' TO RT EDGE PAVEMENT

S.L.M. 195+61



SET MAG & WASHER  
JH 7-12-05



# O.D.O.T. DISTRICT 2 SURVEY OFFICE

PERSONNEL \_\_\_\_\_

REFERENCE NO. 13

SHEET 17 OF 18

NOTES CORDES

H.C. LOEHRKE

R.C. CORDES

DATE 4-14-97

WEATHER SUN

TEMP. +12°C

ROUTE 34

COUNTY HENRY

TOWNSHIP RIDGEVILLE

SECTION 27

T. 6 N. R. 5 E

TYPE MONUMENT SM RR SPIKE

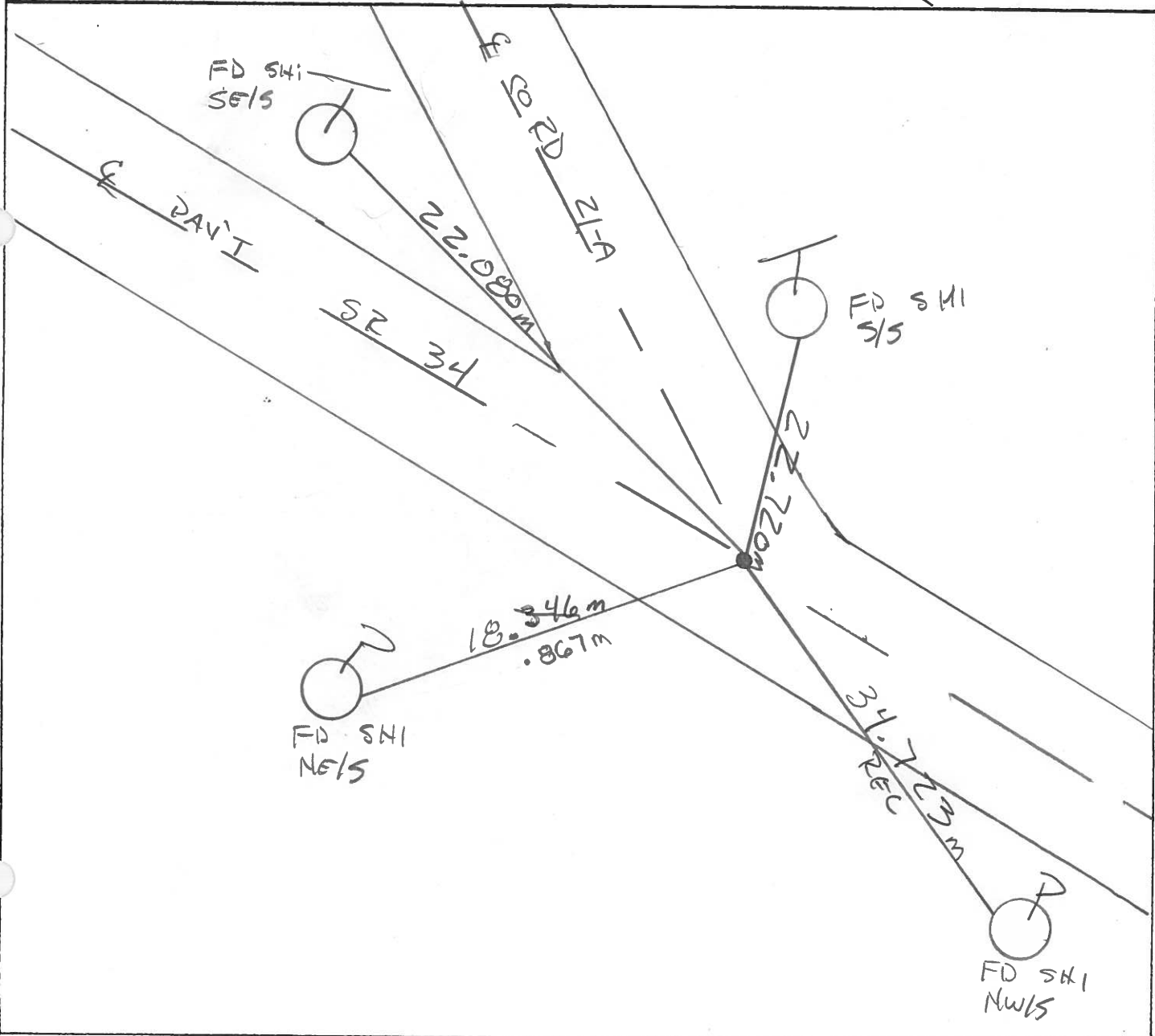
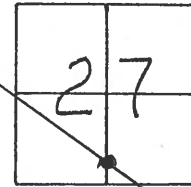
ON SURFACE - ~~NO~~ YES

LEFT-~~E~~ ~~PAV'T~~ - ~~RIGHT~~ 0.45m LT

3.84m TO LT EDGE PAVEMENT

S.L.M. S+957

Set P.K./WASHER  
6-12-97  
C.L.



# O.D.O.T. DISTRICT 2 SURVEY OFFICE

PERSONNEL

REFERENCE NO. 13

SHEET 16 OF     

NOTES J. HOUSEHOLDER

H.C. D. Curtis

DATE July 29, 1986

ROUTE S.R. 34

R.G. R. Michalak

WEATHER FAIR

COUNTY HENRY

I. Stone

TEMP. +82°

TOWNSHIP Ridgeville

SECTION 27

T      R     

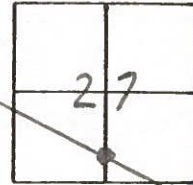
TYPE MONUMENT 5m. R.R. Spike

ON SURFACE - BELOW Surface

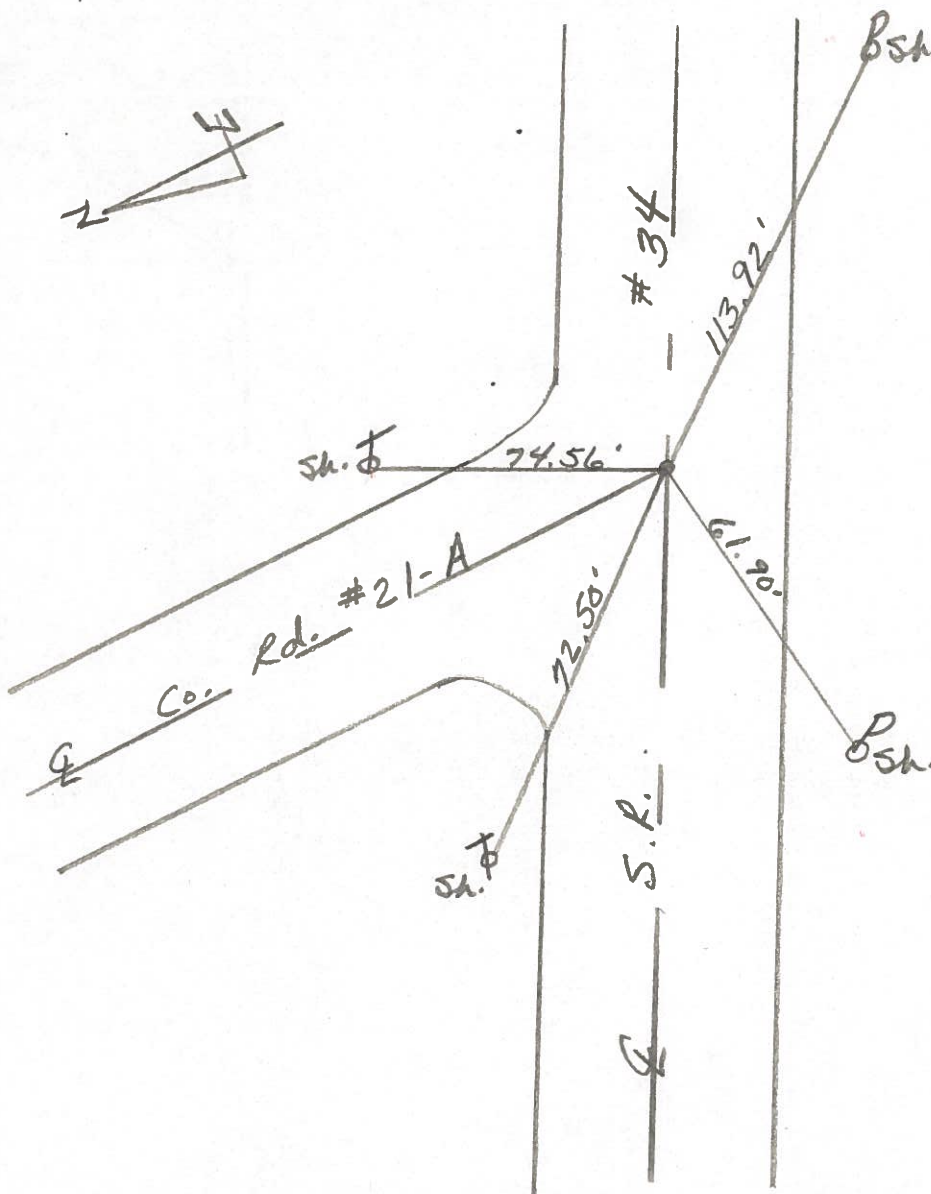
LEFT- & PAV'T. - RIGHT & PAV'T.

TO      EDGE PAVEMENT

S.L.M. 195 + 42



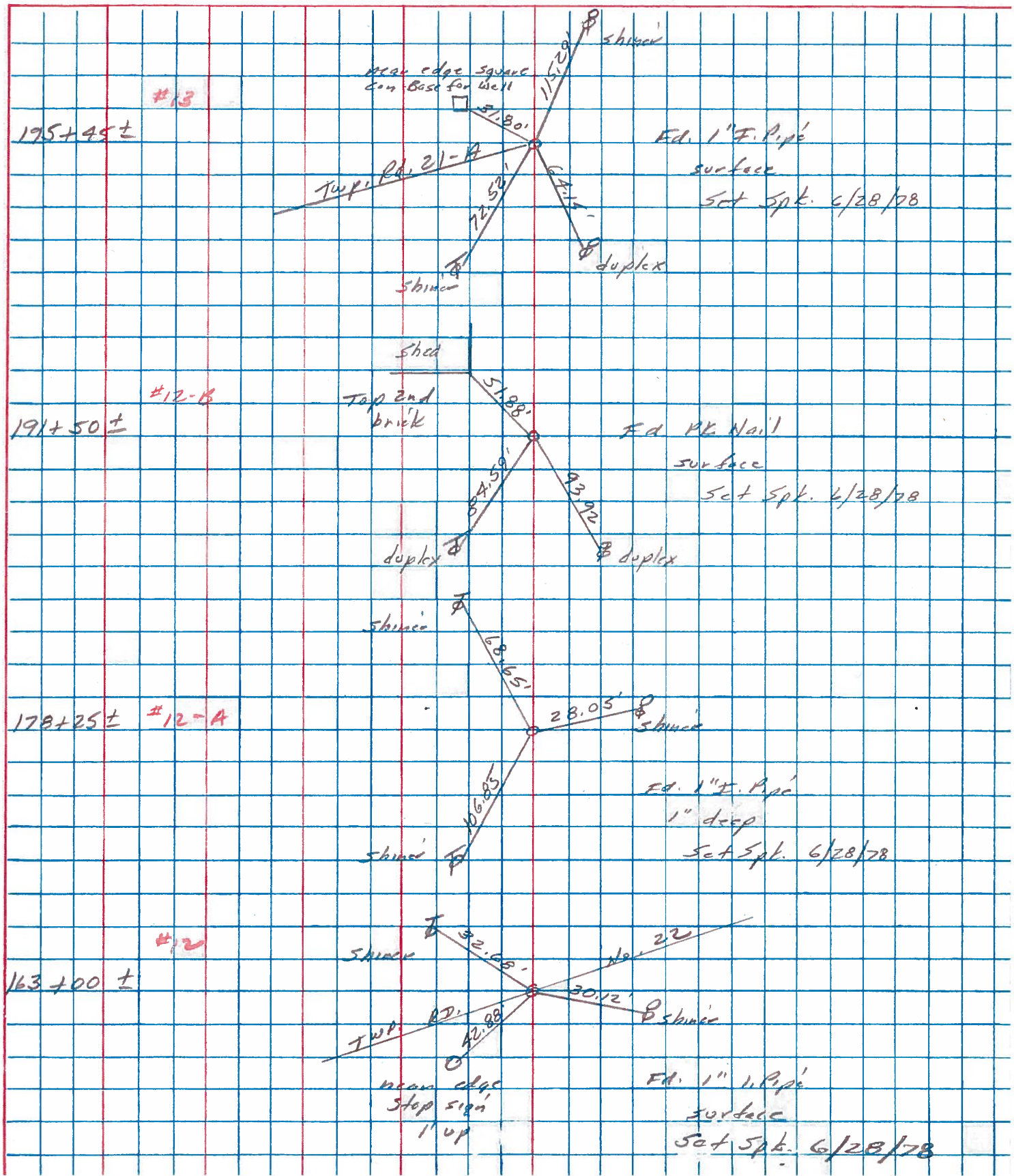
OK 8-28-86  
jah



PERSONNEL	TITLE	PERSONNEL	TITLE
Stone			
F			
Crow			

COUNTY Henry DATE 17 June 78  
 S. R. 34 WEATHER Clear  
 SEC. 0.00 TEMP. 75°

DESCRIPTION References to Control Points JOB NO. 023810  
 LEFT CENTER LINE RIGHT



PERSONNEL TITLE PERSONNEL TITLE

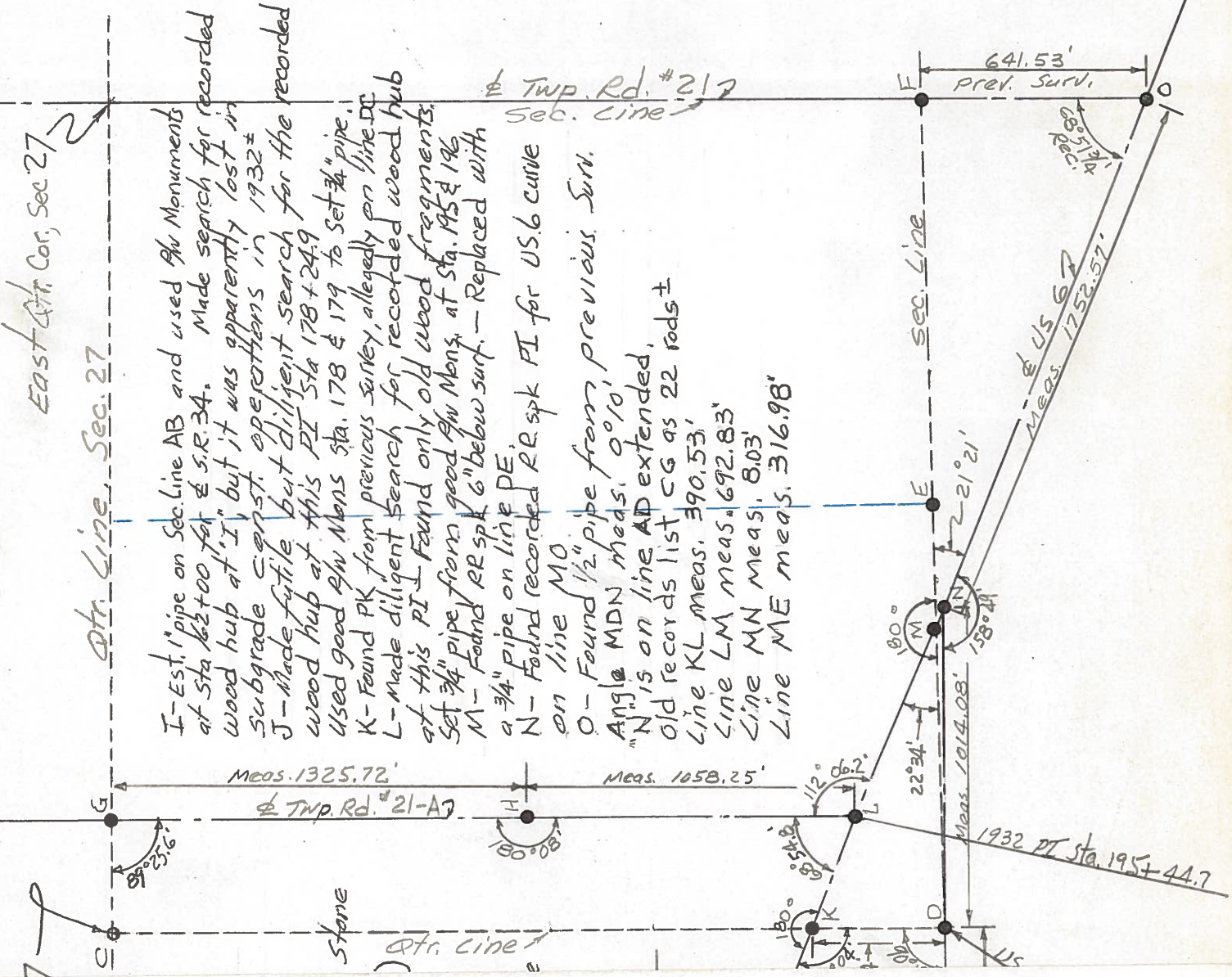
Red Beach  
W. Knappe

COUNTY HENRY DATE June 1975

S. R. 34 WEATHER

SEC. Ridgville Twp. TEMP.

DESCRIPTION SOUTH 1/2 Sec. 27 T-6-N R-5-E JOB NO.



East of Cor, Sec 27

Qtr Line, Sec 27

I - Est. 1" pipe on Sec. Line AB and used  $\Phi$  Monuments at Sta 162+00 for  $\Phi$  S.R. 34. Made search for recorded wood hub at "I", but it was apparently lost in subgrade const. operations in 1932±

J - Made futile but diligent search for the recorded wood hub at this PI Sta 178+24.9

Used good  $\Phi$  Mon Sta. 178 & 179 to set 3/4" pipe.

K - Found PK from previous survey, allegedly on line DC

L - Made diligent search for, recorded wood hub at this PI - Found only old wood fragments.

Set 3/4" pipe from good  $\Phi$  Mon. at Sta. 195 & 196

M - Found RR spk 6" below surf. - Replaced with a 3/4" pipe on line DE.

N - Found recorded RR spk PI for US 6 curve on line MO

O - Found 1/2" pipe from previous Surv.

Angle MDN meas. 0°10'

"N" is on line AD extended.

Old records list CG as 22 rods ±

Line KL meas. 390.53'

Line LM meas. 692.83'

Line MN meas. 8103'

Line ME meas. 316.98'

Qtr Line

Sec. Line

Stone

Meas. 1325.72'

Meas. 1058.25'

Meas. 1752.57'

Meas. 1914.08'

1932 PT Sta. 195+44.7

641.53' Prev. Surv.

88°51'14" Rec.

22°22'

112°06'2"

180°08'

180°

158°41'

180°

21°21'

PERSONNEL TITLE PERSONNEL TITLE

Red Beach  
W. Knape

COUNTY HENRY

DATE 23 June 75

S. R. 34

WEATHER

SEC. 27 Ridgeville Twp.

TEMP

DESCRIPTION

CONTROL POINTS

JOB NO.

