

FED. RD. DIV. NO.	STATE	PROJECT	FISCAL YEAR	1 5
2	OHIO		1946	

HENRY COUNTY  
S.H. 285, SEC. MC CLURE (PT.)

# STATE OF OHIO DEPARTMENT OF HIGHWAYS

## OTTAWA-GRAND RAPIDS ROAD

### S.H. 285, SEC. MC CLURE (PT.)

## HENRY COUNTY

### VILLAGE OF MC CLURE

#### PART 2

For Part 1 See Henry County S.H. 316, Sec. Napoleon, (Pt.)

**CONVENTIONAL SIGNS.**

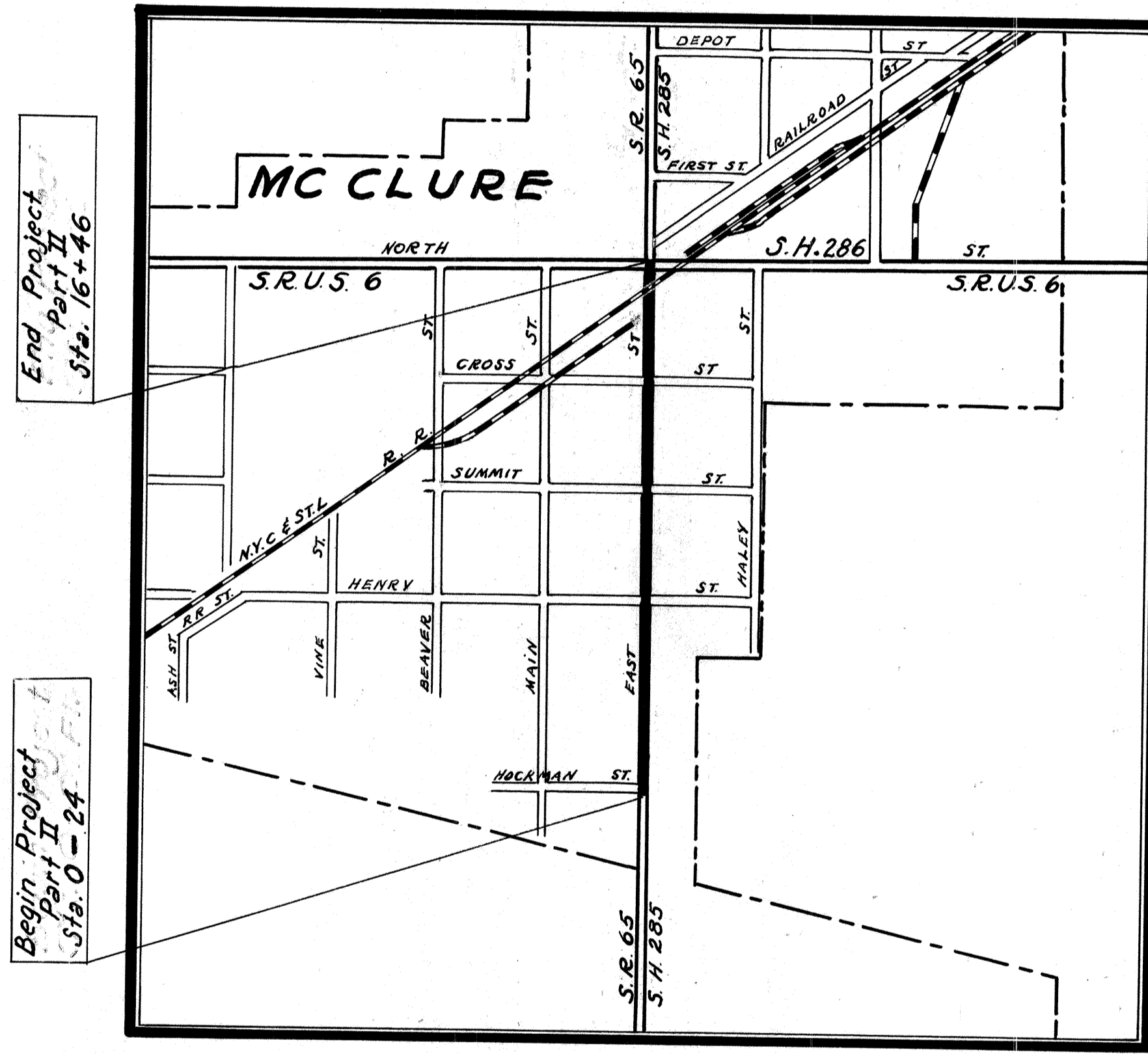
STATE LINE	_____
COUNTY LINE	_____
TOWNSHIP LINE	_____
SECTION LINE	_____
CENTER LINE	_____
PROPERTY LINE	_____
CITY OR VILLAGE LINE	_____
FENCE LINE	-x-x-x-x-
STEAM RAILROAD	===== ===== =====
ELECTRIC RAILROAD	—+—+—+—+—+—+—
POLE LINE	o-o-o-o-o-o-o-o-o-o
GUARD RAIL	o-o-o-o-o-o-o-o-o-o
DRAIN PIPE, NEW	-----
DRAIN PIPE, OLD	-----

**INDEX OF SHEETS.**

TITLE SHEET	1
TYPICAL SECTION	2
PLAN & PROFILE	4-5
GENERAL NOTES	3
PAVEMENT COMPUTATIONS	3
SUMMARIES	3

**LINE DATA**  
PART II

Begin Project Sta. 0 - 24 Ft  
End Project Sta. 16 + 46  
Gross Length = 1670 Lin. Ft.  
Deduct for Railroad 11 Lin. Ft.  
Net Length = 1659 Lin Ft = 0.314 Mi.



**LOCATION PLAN.**

SCALE: 1" = 400'  
DELIVERY POINT - MCCLURE. AVERAGE HAUL 1/2 Mi.  
PORTION TO BE IMPROVED  
STATE HIGHWAYS  
OTHER HIGHWAYS

The standard specifications of The State of Ohio, Department of Highways, including changes and Supplemental Specifications listed in the Proposal shall govern this improvement.

I hereby approve these plans and declare that the making of this improvement will not require the closing to traffic of the highway and that traffic will be maintained as shown on the plans and estimates.

The Right-of-Way necessary for this improvement will be provided by the State of Ohio.

Approved Donald V. Finch  
Date 8-14-46 Assistant to the Chief Engineer.

Approved \_\_\_\_\_  
Date \_\_\_\_\_ Chief Engineer, Bureau of Maintenance.

Approved \_\_\_\_\_  
Date \_\_\_\_\_ Chief Engineer, Bureau of Bridges & R.R. Crossings.

Approved Charles E. Enke  
Date 1-24-47 Chief Engineer, Bureau of Location & Design.

Approved Edison W. Ellis  
Date 9-24-46 First Ass't. Director & Chief Engineer.

Approved Perry T. Ford  
Date 2-24-46 Director of Highways.

**SCALES**

PLAN 1" = 50'  
PROFILE - HORIZONTAL 1" = 50'  
PROFILE - VERTICAL 1" = 5'

PART II  
STANDARD DRAWINGS.

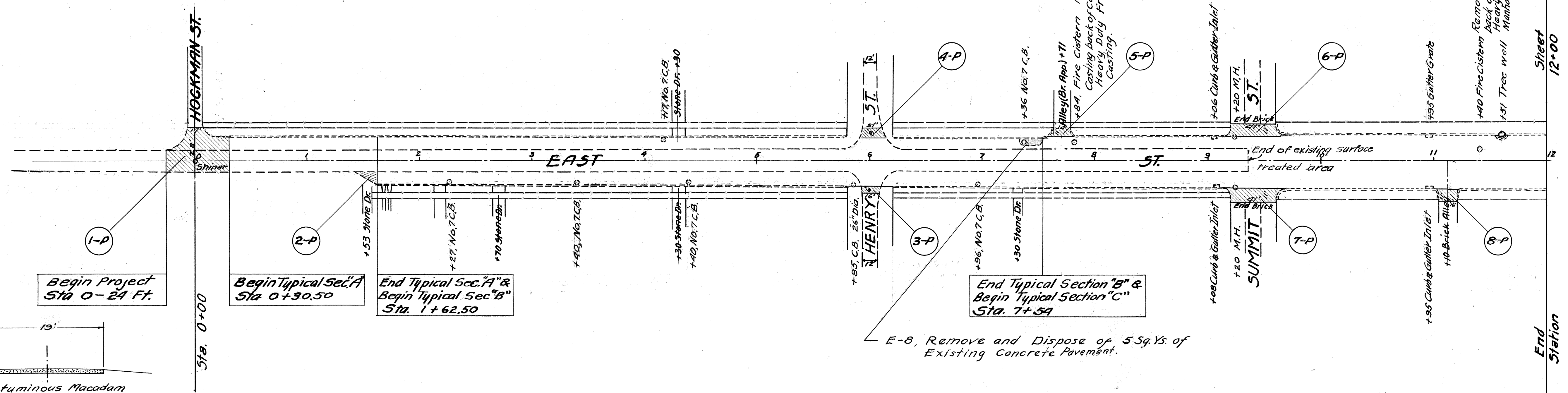
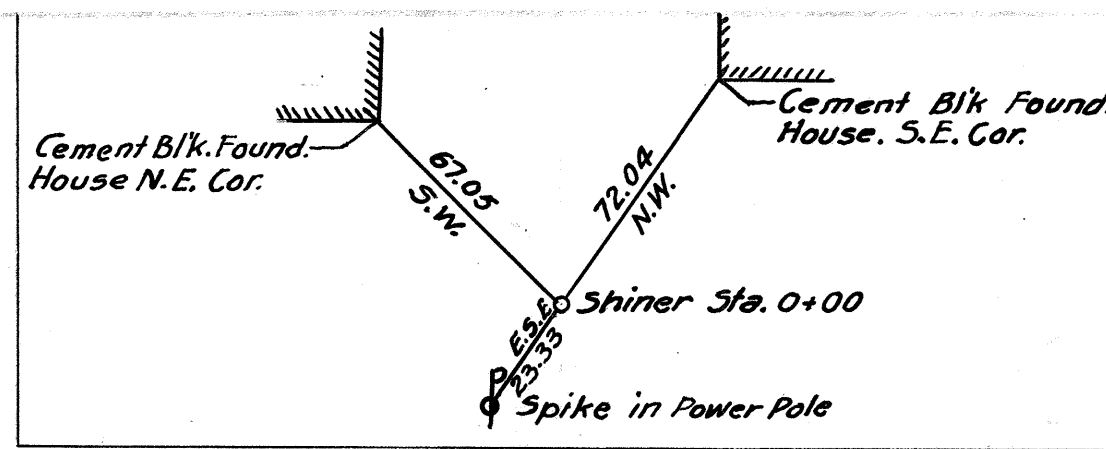
G-7.07	6-1-42
I-8 C.B. No. 6	12-15-41
I-8 M.H. No. 1	3-1-39

PART II  
SUPPLEMENTAL SPECIFICATIONS.

NONE	

FILE NO.	HENRY COUNTY S.H. 285 SEC. MC CLURE (PT.)
DATE OF LETTING	194
CONTRACT NO.	

HENRY COUNTY.  
S.H. 285. SEC. 1, McCLURE (Pt)



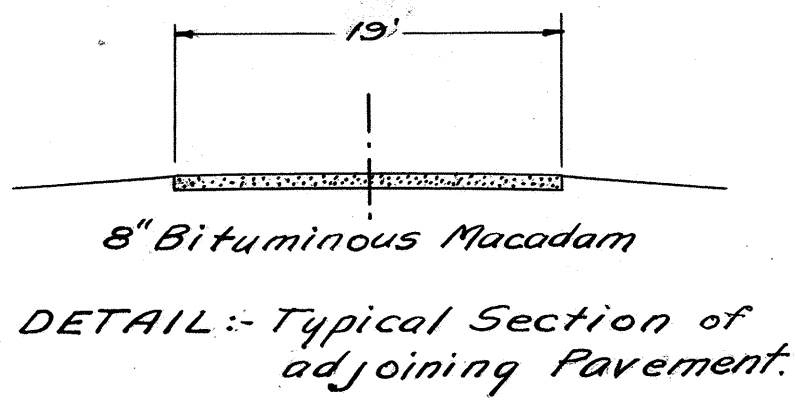
Begin Project Sta 0 - 24 Ft.

Begin Typical Sec. A Sta 0+30.50

End Typical Sec. A & Begin Typical Sec. B Sta. 1+62.50

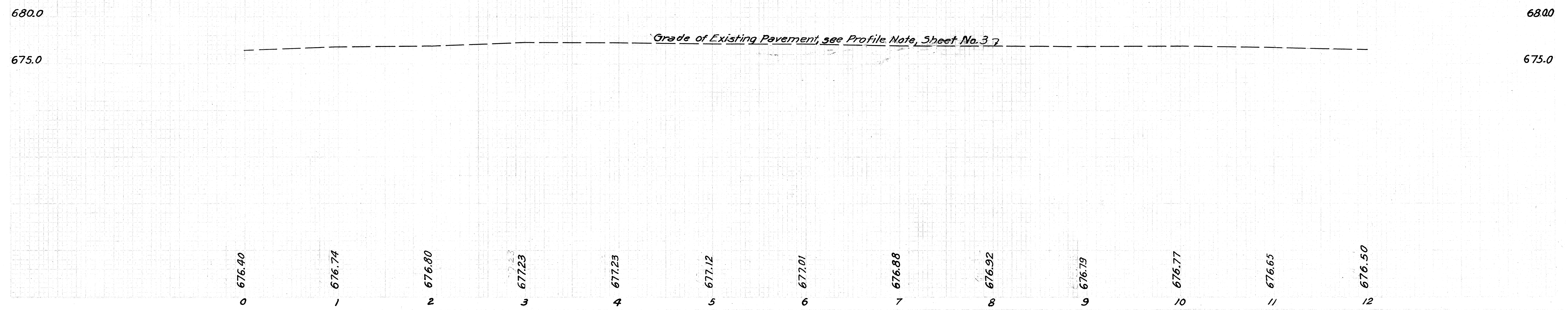
End Typical Section "B" & Begin Typical Section "C" Sta. 7+54

E-8, Remove and Dispose of 5 Sq. Ys. of Existing Concrete Pavement.

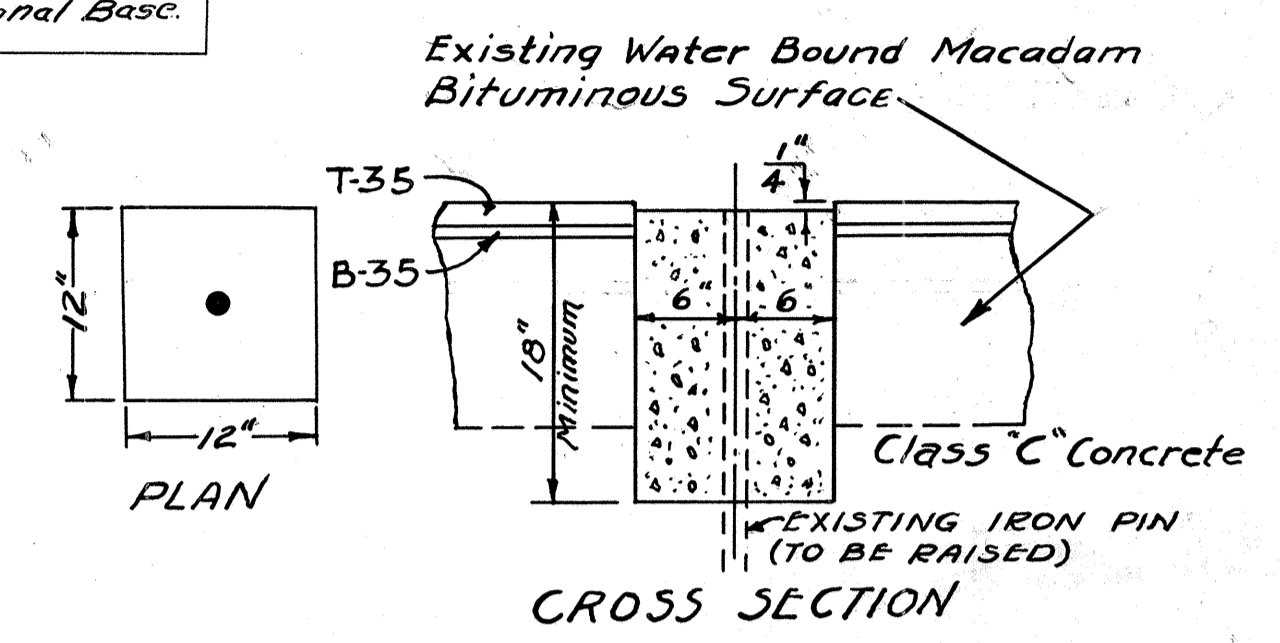
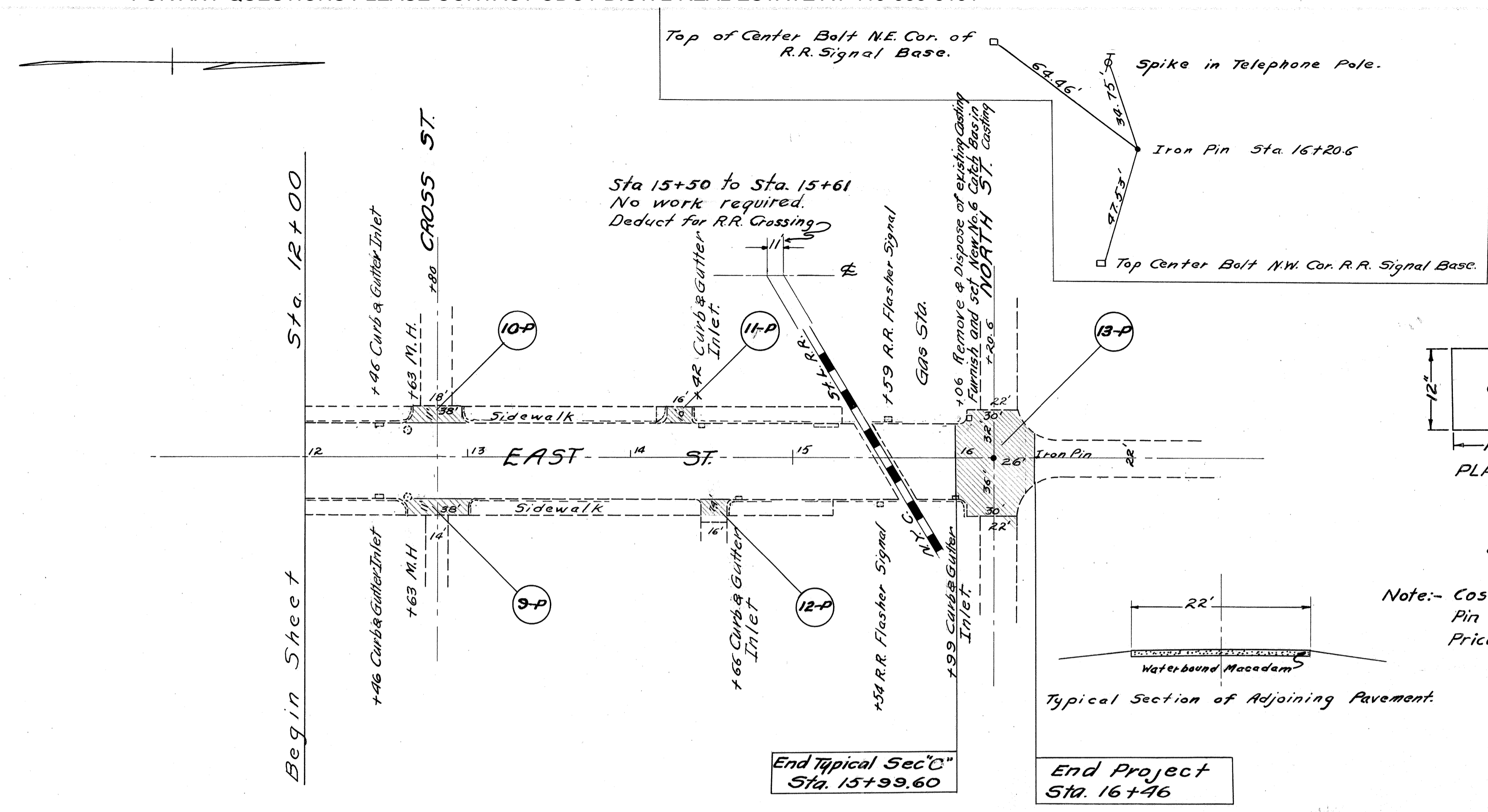


B.M. + on S.W. Wing Wall.  
Sta. 3+54-18' Lt.  
El. 677.24.

B.M. on N.W. Cor. Con. Step (Popes Market)  
Sta. 9+94-50' Rt.  
El. 677.67.



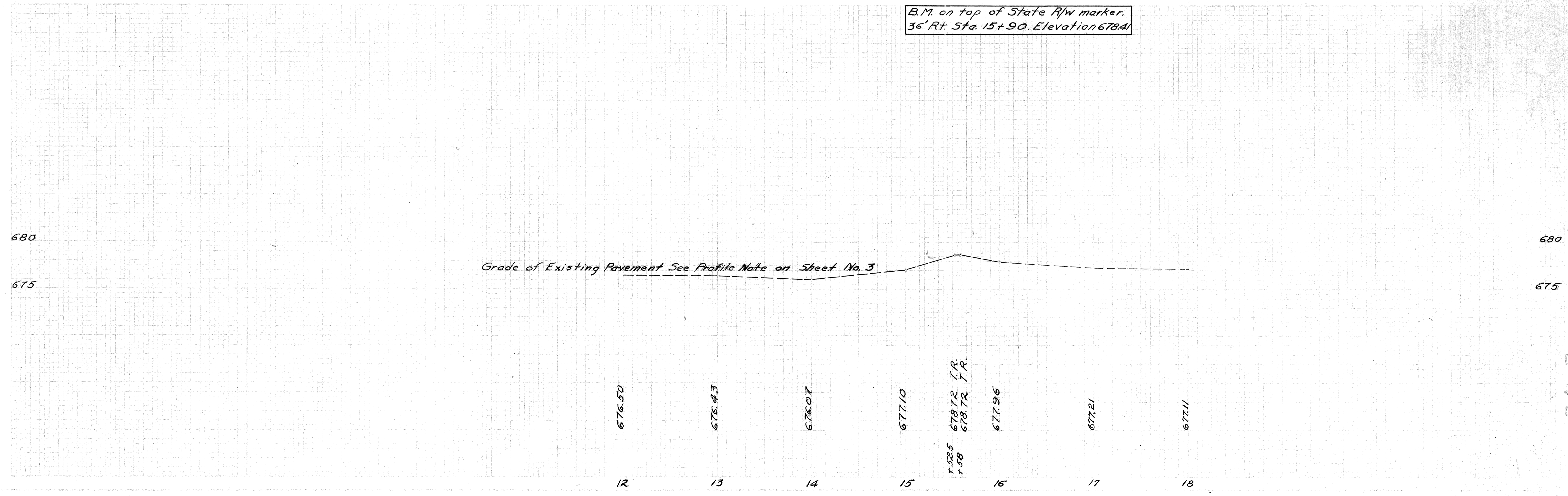
**HENRY COUNTY.**  
**S.H. 285. SEC. McCLURE (Pt.)**



**CROSS SECTION**  
**DETAIL SHOWING IRON PIN MONUMENT ADJUSTED TO GRADE.**  
Note:- Cost of necessary Pavement Removal, Raising Iron Pin and Class "C" Concrete is included in the Unit Price for adjusting Monuments to Grade, Item I-8.

**RESETTING IRON PIN**  
Sta. 16+20.6 Side Cen.

B.M. on top of State R/W marker.  
36' Rt. Sta. 15+90. Elevation 678.41



HEM-285 CE 2-A3