

O.D.O.T. DISTRICT 2 SURVEY OFFICE (USE ONLY)

PERSONNEL	REFERENCE NO.	<u>1 A</u>	SHEET	<u>2</u>	OF	<u>42</u>
NOTES	<u>RHOADES</u>	DATE	<u>5/3/17</u>	ROUTE	<u>SR 65</u>	
H.C.	<u>O'DONNELL</u>	WEATHER	<u>SUNNY</u>	COUNTY	<u>HENRY</u>	
R.C.	<u>HELDMAN</u>	TEMP.	<u>46°</u>	TOWNSHIP	<u>BARTLOW</u>	
				SECTION	<u>34</u>	
				T	<u>3</u>	R
					<u>N</u>	<u>8</u>
					<u>E</u>	

TYPE MONUMENT SM.R.R.SPIKE

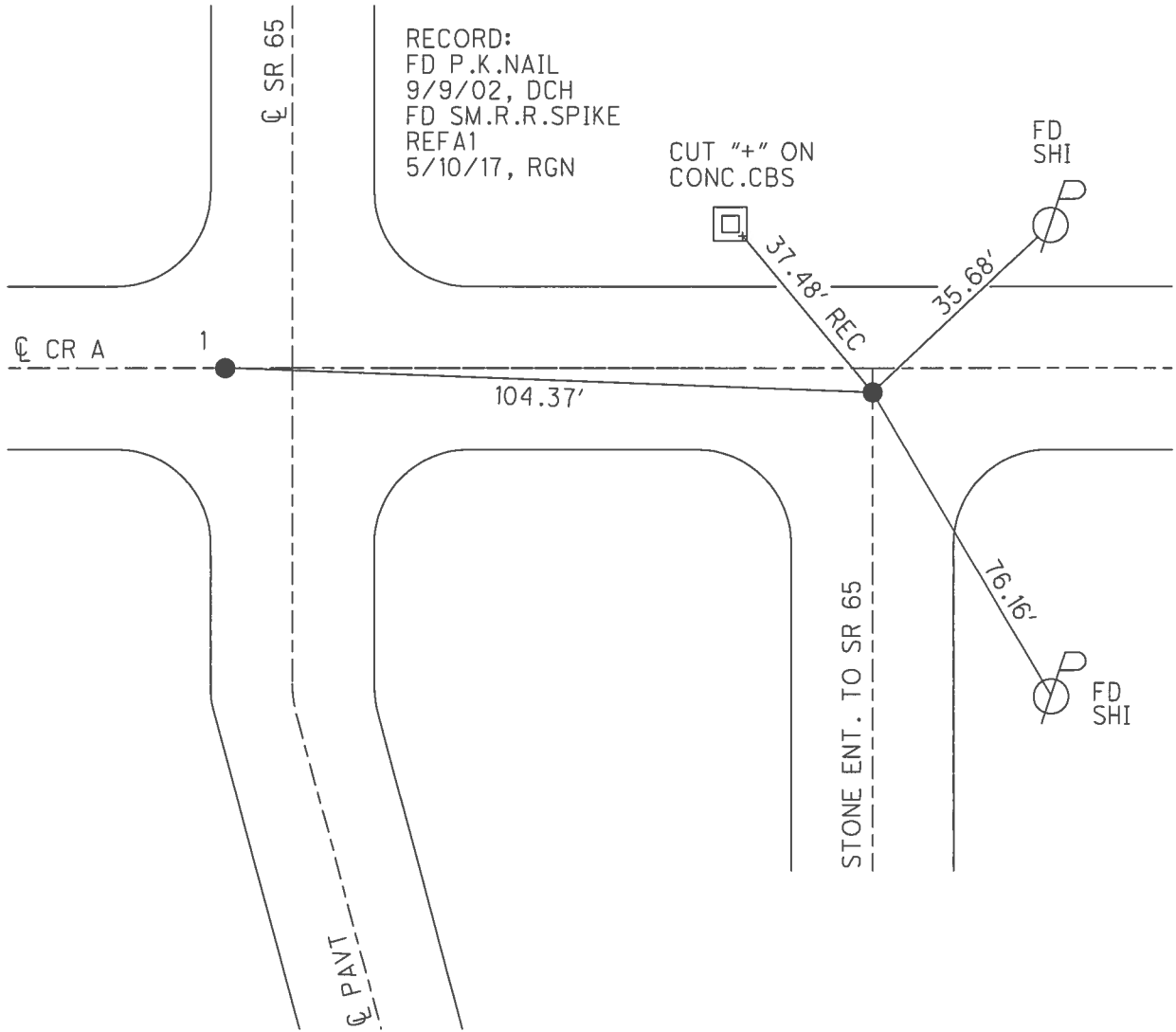
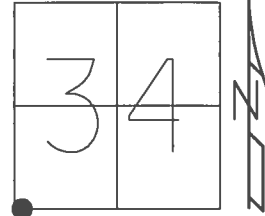
ON SURFACE - ~~BELOW~~ ON

~~LEFT~~ - ☉ PAV'T - RIGHT 5', ☉ CR A

- TO - EDGE PAVEMENT

S.L.M. 0+00

GRID: NORTHING: 550022.356 EASTING: 1572483.637



O.D.O.T. DISTRICT 2 SURVEY OFFICE (USE ONLY)

PERSONNEL

REFERENCE NO. 1 A

SHEET 2 OF 42

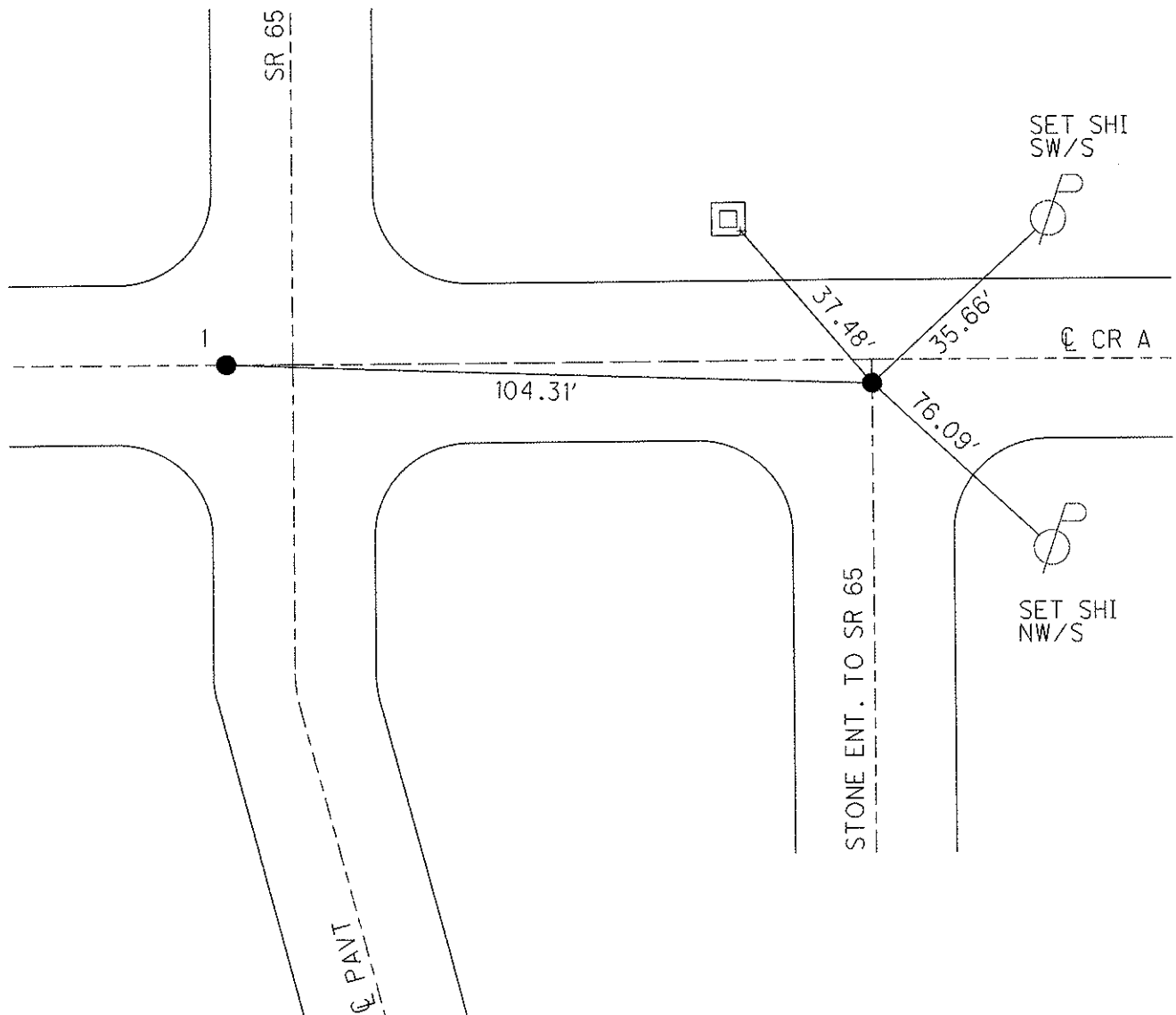
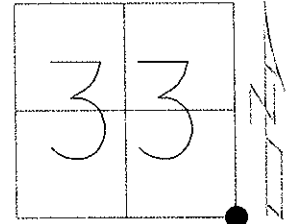
NOTES BROWN  
 H.C. HOMAN  
 R.C. BROWN

DATE 09-09-02  
 WEATHER SUNNY  
 TEMP. 70°

ROUTE SR 65  
 COUNTY HENRY  
 TOWNSHIP BARTLOW  
 SECTION 33  
 T 3 N R 8 E

TYPE MONUMENT \_\_\_\_\_ PK NAIL \_\_\_\_\_  
 ON SURFACE - ~~BELOW~~ \_\_\_\_\_ ON \_\_\_\_\_  
 LEFT - Q PAV'T - RIGHT \_\_\_\_\_ ON \_\_\_\_\_  
 \_\_\_\_\_ TO \_\_\_\_\_ EDGE PAVEMENT  
 S.L.M. \_\_\_\_\_

Grid: Northing: \_\_\_\_\_ Easting: \_\_\_\_\_



# O.D.O.T. DISTRICT 2 SURVEY OFFICE

PERSONNEL

REFERENCE NO. 1

SHEET 1 OF 29

NOTES Brown

H.C. Homan

R.C. Brown

DATE 9-9-02

WEATHER SUNNY

TEMP. +70°

ROUTE 65

COUNTY HENRY

TOWNSHIP BARTLOW

SECTION 33

T3 N R 8 E

DRAWN - BARNHISEL

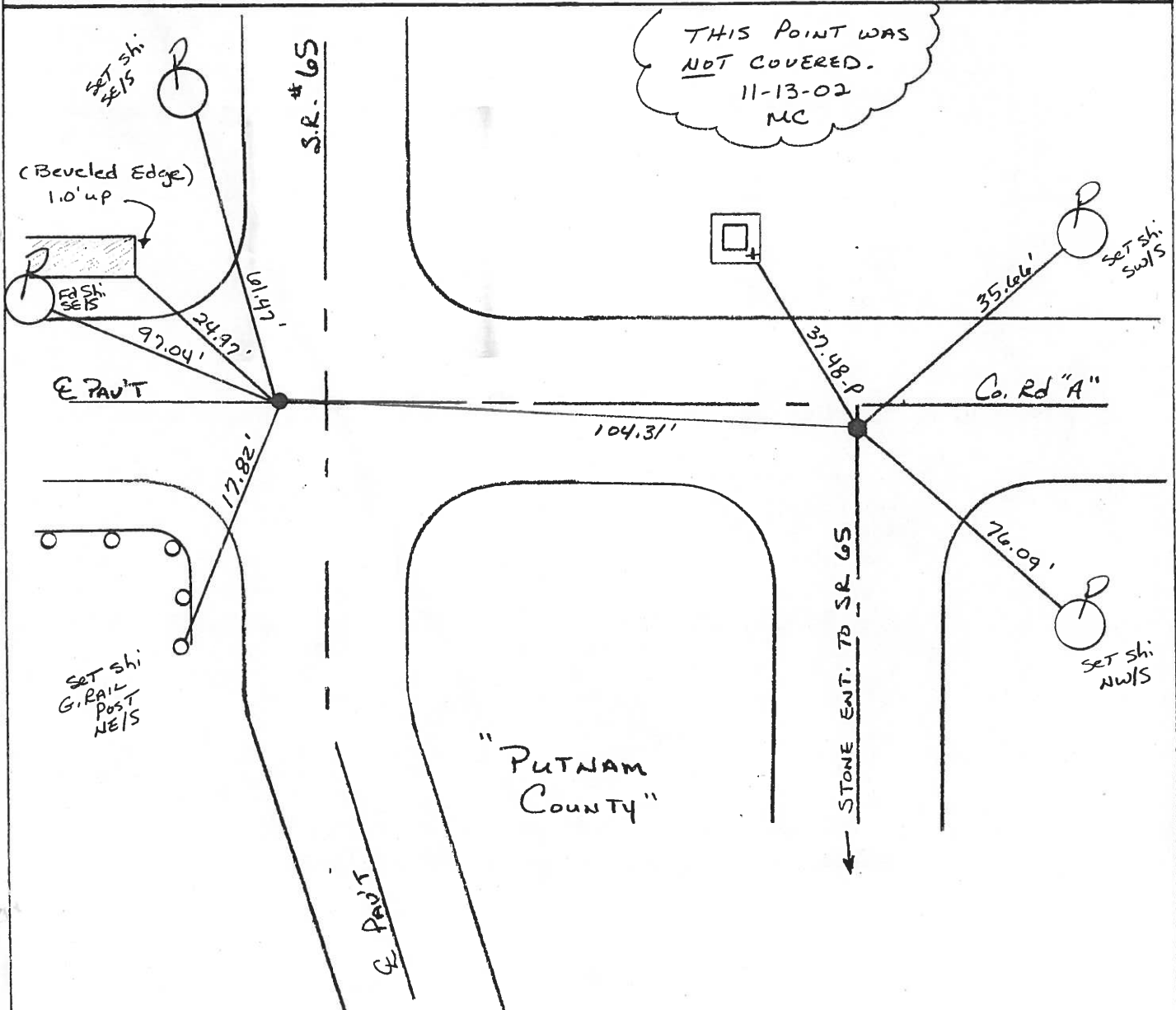
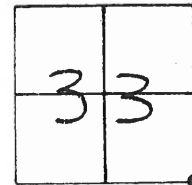
TYPE MONUMENT PK NAIL

ON SURFACE - BELOW 1"

LEFT - E PAV'T. - ~~RIGHT~~ 4.9'

2.6' TO LT EDGE PAVEMENT

S.L.M. 0+00



# O.D.O.T. DISTRICT 2 SURVEY OFFICE

PERSONNEL

REFERENCE NO. 1

SHEET 1 OF 18

NOTES BARNHISEL

H.C. KUSZ

DATE 2-21-93

ROUTE 65

R.C. BARNHISEL

WEATHER SUNNY

COUNTY HENRY

OTTO P

TEMP. +75° F

TOWNSHIP BAETLOW

SECTION 33

T 3 N R 8 E

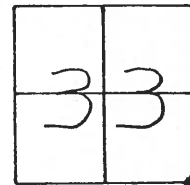
TYPE MONUMENT P.K. + WASHER

ON SURFACE - ~~BELOW~~ yes below 1"

LEFT- & PAU'T. - RIGHT 6.9

2.6 TO 4.7 EDGE PAVEMENT

S.L.M. 0+00



NOT COVERED

Fd. PK Nail 1" down

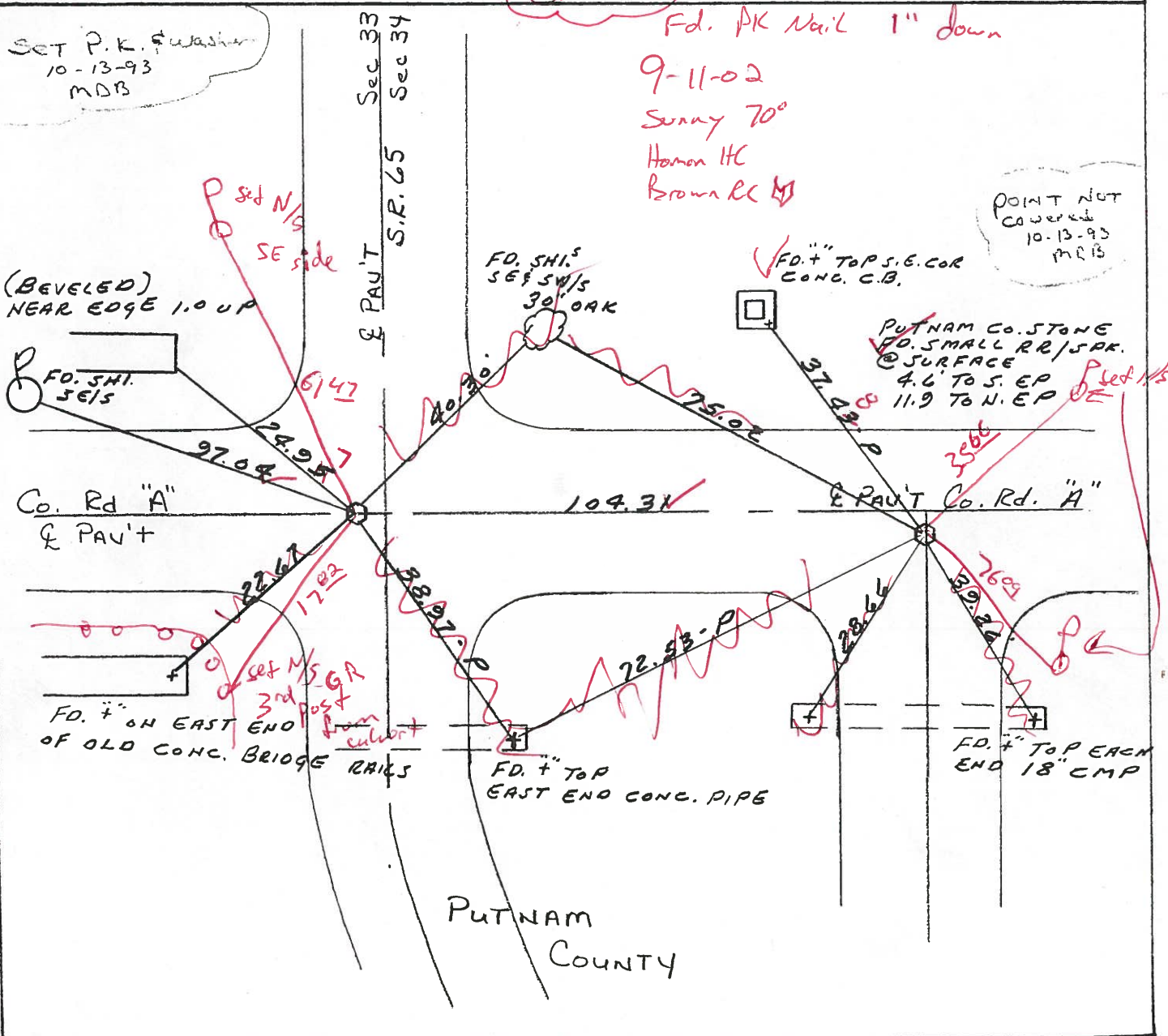
9-11-02

Sunny 70°

Homon HC

Brown & M

POINT NOT COVERED  
10-13-93  
MRB



SET P.K. + WASHER  
10-13-93  
MDB

(BEVELED)  
NEAR EDGE 1.0 UP

P set N/S  
SE side

FD. SHI.  
SE 1/4 SW 1/4  
30' OAK

FD. 1/2" TOP S.E. COR  
CONG. C.B.

PUTNAM CO. STONE  
FD. SMALL RR/SRK.  
@ SURFACE  
4.6' TO S. EP  
11.9' TO N. EP

Co. Rd "A"  
& PAU'T

109.31

& PAU'T Co. Rd. "A"

FD. 1/2" ON EAST END  
OF OLD CONG. BRIDGE RAILS

FD. 1/2" TOP  
EAST END CONG. PIPE

FD. 1/2" TOP EACH  
END 18" CMP

PUTNAM  
COUNTY

Resurveyed 1993

# O.D.O.T. DISTRICT 2 SURVEY OFFICE

PERSONNEL

REFERENCE NO. 1

SHEET      OF     

NOTES Hoffman

H.C. BARNHISEL

R.C. LOSHRKE

DATE 3-26-85

WEATHER clear - windy

TEMP. 60°

ROUTE SR 65

COUNTY HENRY

TOWNSHIP BARTLOW

SECTION 33

T 3 N R 8 E

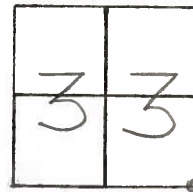
TYPE MONUMENT SMALL RR SPIKE

ON SURFACE BELOW

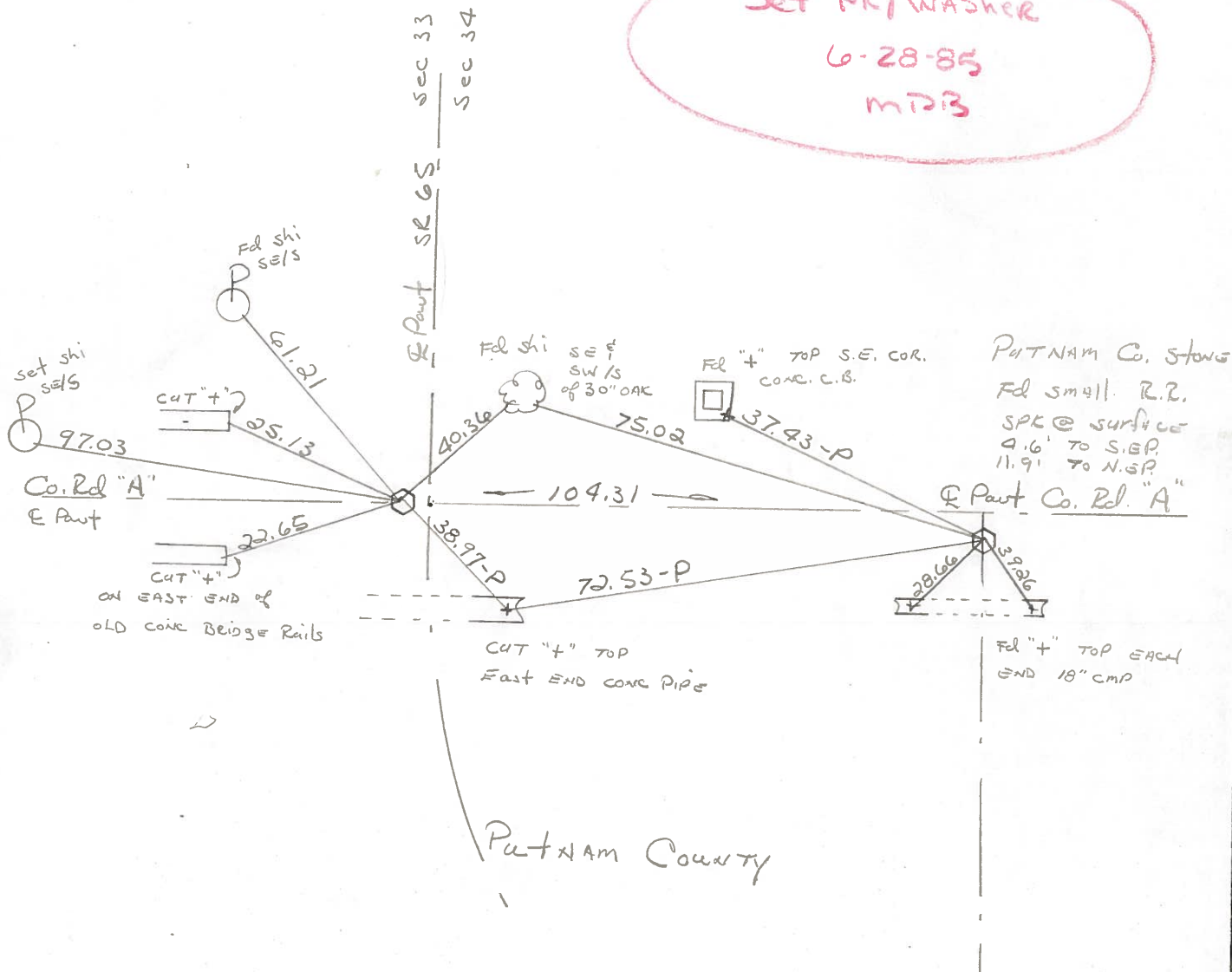
LEFT - C PAV'T. - RIGHT 7.2'

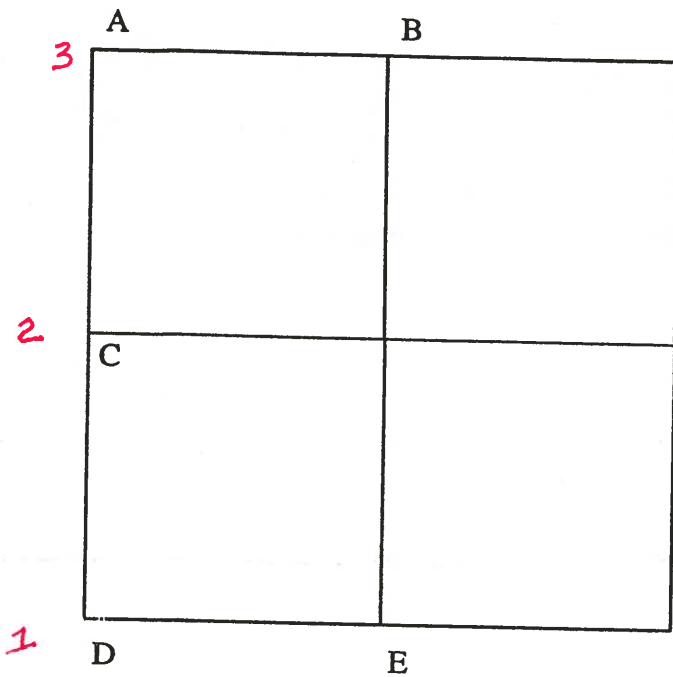
TO - EDGE PAVEMENT

S.L.M. 0 + 00



Set PK/Washer  
 6-28-85  
 MPB





COUNTY: HENRY

TOWNSHIP: BARTLOW

T-3-N R-8-E

SECTION: 34

8/4/82 R.W., D.B., J.B.

- C-  
2 Found small RR spike 2' +/- west of center line pavement.  
31.82' N.E. to shiner SW/S telephone pole.  
30.48' S.E. to "+" N.E. cor. catch basin.  
28.21' S.W. to "+" west end 12" conc. pipe. (P)

8/4/82 R.W., D.B., J.B.

- D-  
1 Found small R.R. spike 7.8' west of centerline pavement.  
24.78' N.W. to S.E. cor. conc. bridge rail  
47.12' W.N.W. to duplex S/S telephone pole  
61.22' N.W. to nail/shiner SE/S power pole  
40.36' N.E. to nail/shiner SE/S 30" Oak  
73.75' E.N.E. to "+" S.E. cor. catch basin (P)  
40.74' S.E. to "+" N.E. cor. catch basin (P)  
39.30' S.E. to nail/ shiner NW/S telephone pole  
22.47' S.W. to N.E. cor. bridge rail

8/11/82 R.W., D.B., J.B.

- E- Found stone (6" x 7" x 10") 12" below road surface. Placed center punched R.R. spike on surface over high point of stone. P.K.'s 6' N.E. & N.W. Stone is on the south edge of pavement.  
24.18' N.W. to 5/8" iron pin on north edge of pavement  
26.45' N.E. to 5/8" iron pin on north edge of pavement  
82.84' E. to iron pin @ N1/4 post; Section 3; Van Buren Twp.; Putnam Co.

9-18-02

Mikes:  
Henry County Engineer  
MOST RECENT REF. TIES.

---

WORD FROM CONSTRUCTION:  
WORK WILL BEGIN AT  
HENRY/PUTNAM CO. LINE.



PERSONNEL TITLE PERSONNEL TITLE  
 BURNSIDE \_\_\_\_\_ KIJOWSKI \_\_\_\_\_  
 SMITH \_\_\_\_\_ \_\_\_\_\_  
 BOWERS \_\_\_\_\_ \_\_\_\_\_  
 MEAD \_\_\_\_\_ \_\_\_\_\_

COUNTY HENRY DATE 7-26-74  
 S. R. 65 WEATHER PT. CLOUDY  
 SEC. 33, BARTLOW Twp TEMP. +82°

DESCRIPTION REF. TO SEC. COR. LEFT CENTER LINE RIGHT JOB NO.

