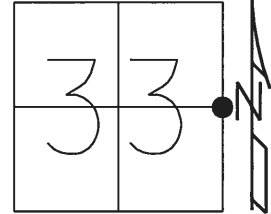


O.D.O.T. DISTRICT 2 SURVEY OFFICE (USE ONLY)

PERSONNEL _____ REFERENCE NO. 2 SHEET 3 OF 42

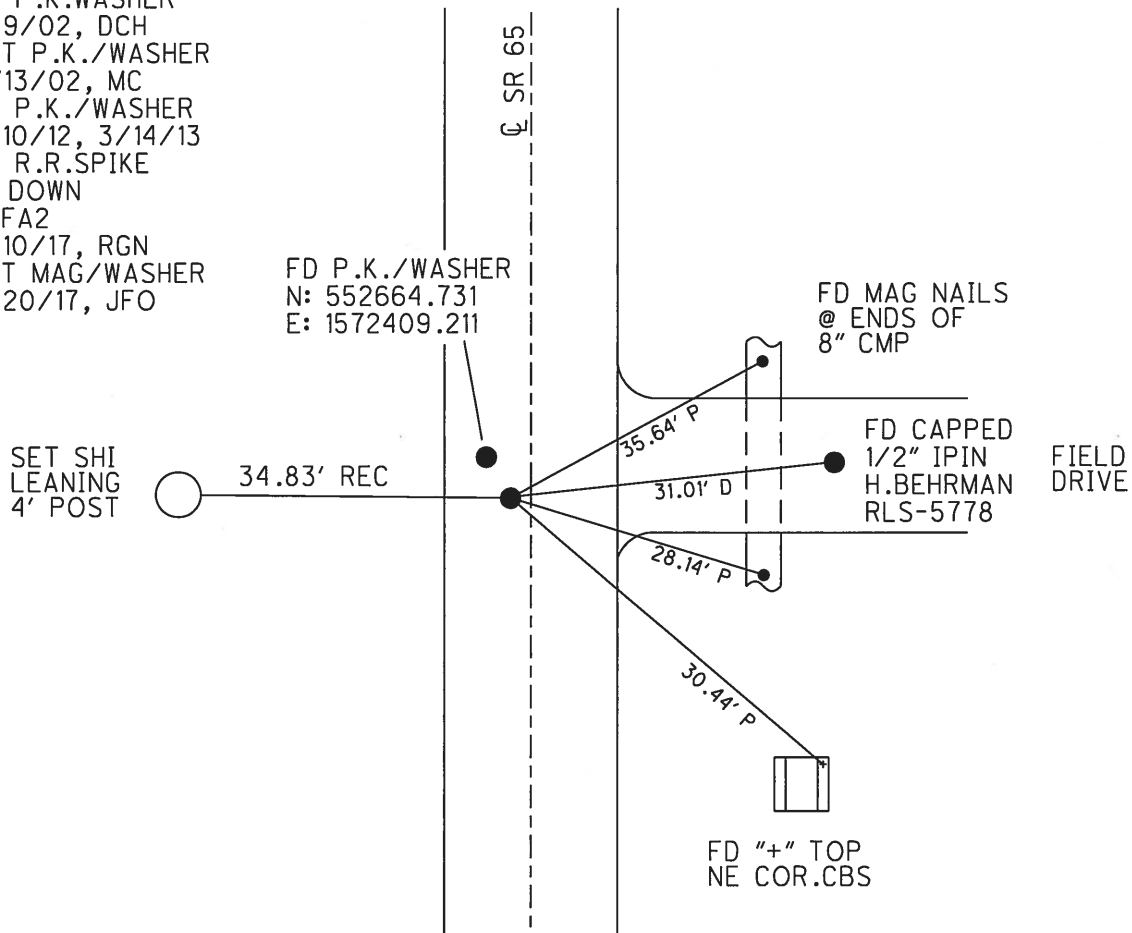
NOTES	<u>O'DONNELL</u>	DATE	<u>5/10/17</u>	ROUTE	<u>SR 65</u>
H.C.	<u>O'DONNELL</u>	WEATHER	<u>SUNNY</u>	COUNTY	<u>HENRY</u>
R.C.	<u>NUHFER</u>	TEMP.	<u>70°</u>	TOWNSHIP	<u>BARTLOW</u>
				SECTION	<u>33</u>
				T <u>3</u> N R <u>8</u> E	

TYPE MONUMENT R.R.SPIKE
 ON SURFACE - ~~BELOW~~ 6"
 LEFT - ☉ PAV'T - ~~RIGHT~~ 2.1'
8.1' TO LT EDGE PAVEMENT
 S.L.M. 26+49



GRID: NORTHING: 552664.045 EASTING: 1572409.211

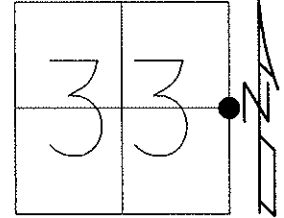
RECORD:
 FD P.K.WASHER
 9/9/02, DCH
 SET P.K./WASHER
 11/13/02, MC
 FD P.K./WASHER
 7/10/12, 3/14/13
 FD R.R.SPIKE
 6" DOWN
 REFA2
 5/10/17, RGN
 SET MAG/WASHER
 9/20/17, JFO



O.D.O.T. DISTRICT 2 SURVEY OFFICE (USE ONLY)

PERSONNEL	REFERENCE NO. <u>2</u>	SHEET <u>3</u> OF <u>42</u>
NOTES <u>BROWN</u>	DATE <u>09-09-02</u>	ROUTE <u>SR 65</u>
H.C. <u>HOMAN</u>	WEATHER <u>SUNNY</u>	COUNTY <u>HENRY</u>
R.C. <u>BROWN</u>	TEMP. <u>70°</u>	TOWNSHIP <u>BARTLOW</u>
		SECTION <u>33</u>
		T <u>3</u> N R <u>8</u> E

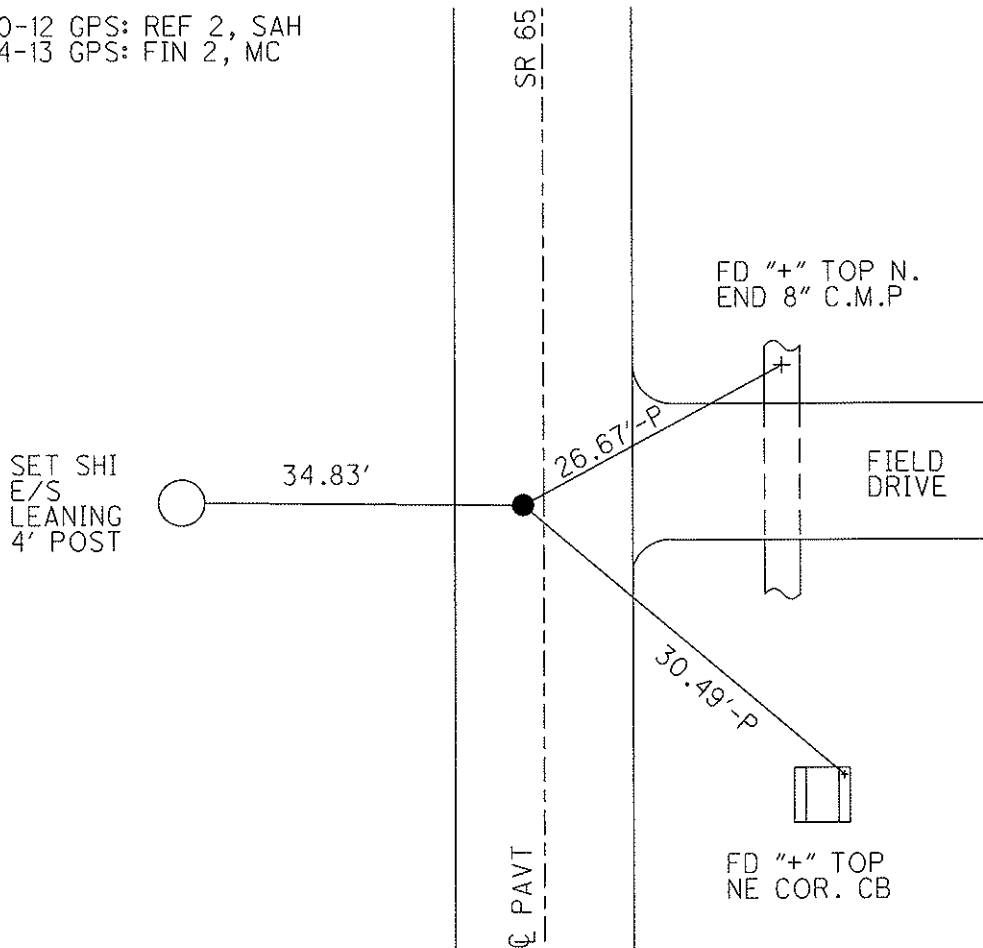
TYPE MONUMENT _____ PK/WASHER _____
 ON SURFACE - BELOW _____ ON _____
 LEFT - C PAV'T - RIGHT _____ 2.1' _____
 _____ 8.1' TO LT. EDGE PAVEMENT _____
 S.L.M. _____ 26+49 _____



Grid: Northing: 552664.748 Easting: 1572409.180

11-13-02 RESET PK/WASHER, MC
 03-14-13 POINT CHIPPED OUT, MC

07-10-12 GPS: REF 2, SAH
 03-14-13 GPS: FIN 2, MC



O.D.O.T. DISTRICT 2 SURVEY OFFICE

PERSONNEL _____

REFERENCE NO. 2

SHEET 2 OF 29

NOTES Brown

H.C. Homan

R.C. Brown

DRAWN - BARNHISEL

DATE 9-9-02

WEATHER Sunny

TEMP. +70°

ROUTE 65

COUNTY HENRY

TOWNSHIP BARTLOW

SECTION 33

T 3 N R 8 E

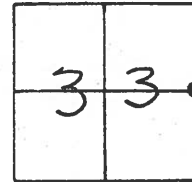
TYPE MONUMENT PK & Washer

ON SURFACE - BELOW YES

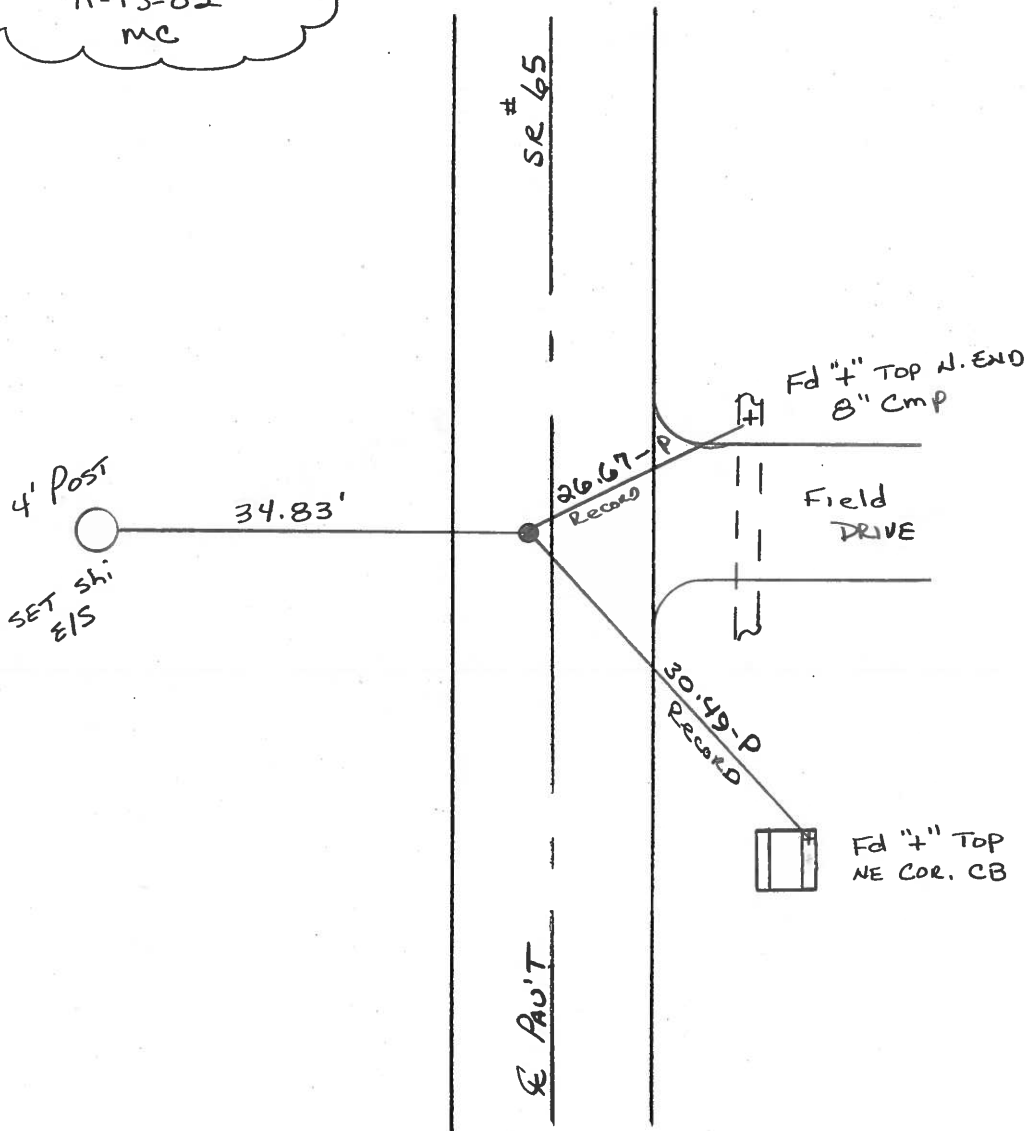
LEFT- & PAV'T. - RIGHT 2.1'

8.1' TO LT EDGE PAVEMENT

S.L.M. 26+49



Reset PK & Washer
11-13-02
MC



O.D.O.T. DISTRICT 2 SURVEY OFFICE

PERSONNEL

REFERENCE NO. 2

SHEET OF

NOTES HOFFMAN

H.C. BARNHISEL

R.C. LOHRKE

DATE 3-26-85

WEATHER CLEAR - WINDY

TEMP. 60°

ROUTE SR 65

COUNTY HENRY

TOWNSHIP BARTLOW

SECTION 33

T3 N R 8 E

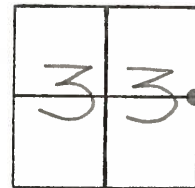
TYPE MONUMENT small R.R. spikes

ON SURFACE BELOW

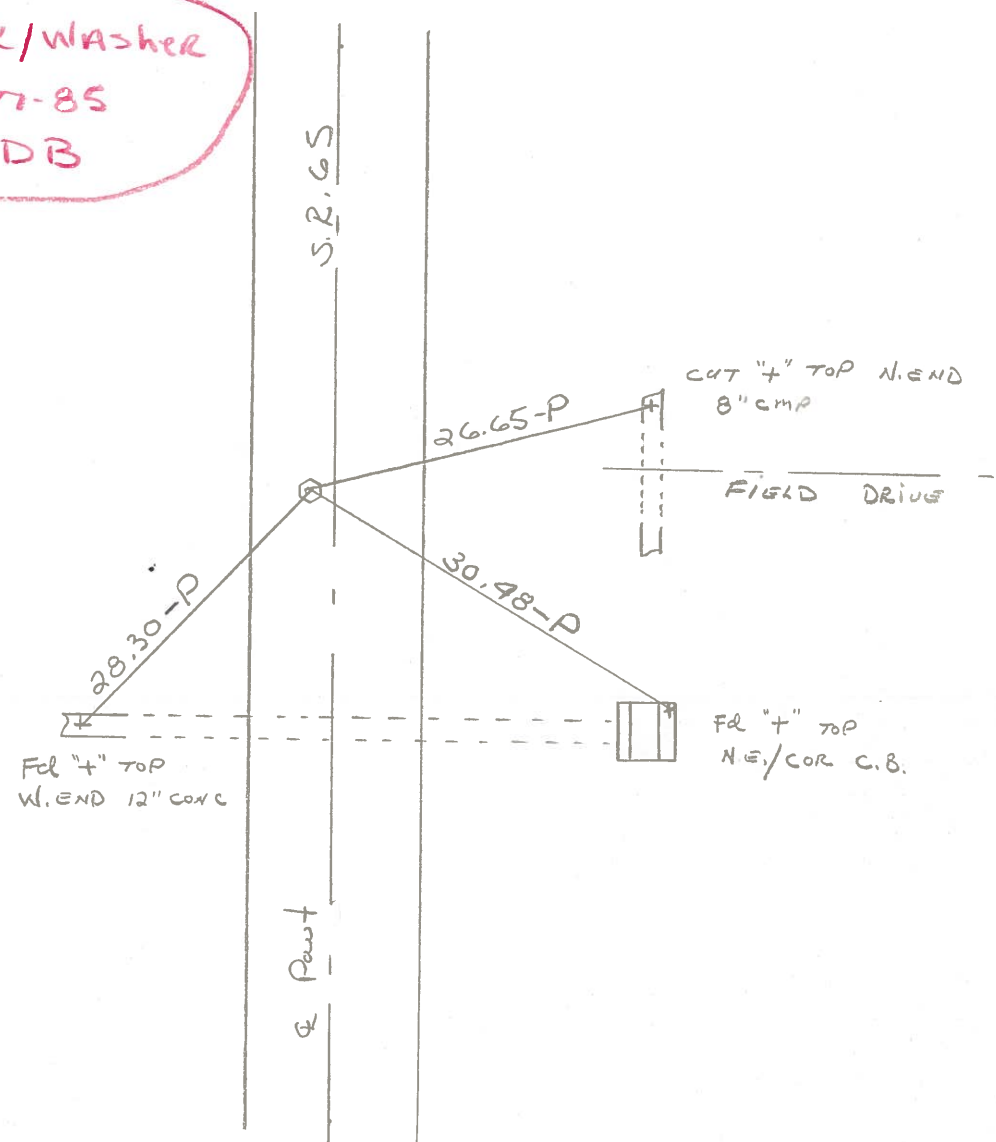
LEFT-~~E~~ PAVT - RIGHT 2.0'

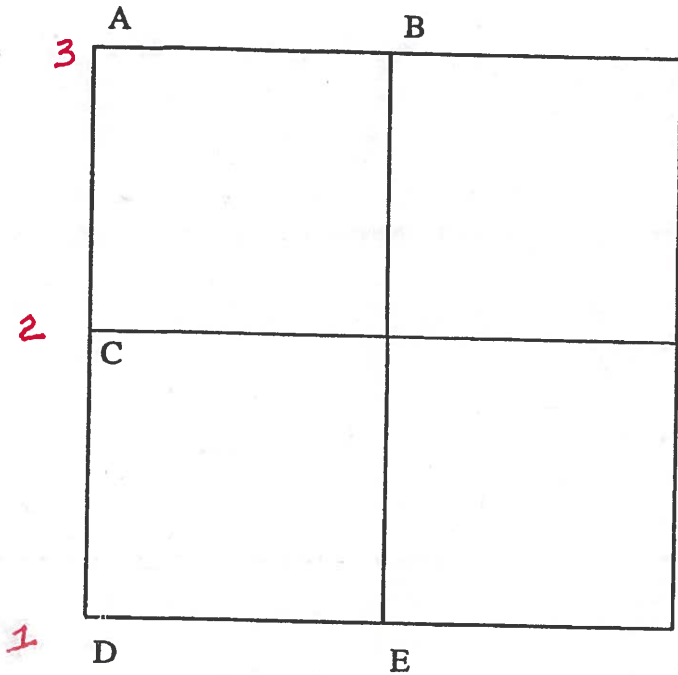
8.0 TO LT. EDGE PAVEMENT

S.L.M. 26+42



Set PK/Washer
 6-27-85
 MDB





COUNTY: HENRY

TOWNSHIP: BARTLOW

T-3-N R-8-E

SECTION: 34

8/4/82 R.W., D.B., J.B.

- C- Found small RR spike 2' +/- west of center line pavement.
- 2 31.82' N.E. to shiner SW/S telephone pole.
- 30.48' S.E. to "+" N.E. cor. catch basin.
- 28.21' S.W. to "+" west end 12" conc. pipe. (P)

8/4/82 R.W., D.B., J.B.

- D- Found small R.R. spike 7.8' west of centerline pavement.
- 1 24.78' N.W. to S.E. cor. conc. bridge rail
- 47.12' W.N.W. to duplex S/S telephone pole
- 61.22' N.W. to nail/shiner SE/S power pole
- 40.36' N.E. to nail/shiner SE/S 30" Oak
- 73.75' E.N.E. to "+" S.E. cor. catch basin (P)
- 40.74' S.E. to "+" N.E. cor. catch basin (P)
- 39.30' S.E. to nail/ shiner NW/S telephone pole
- 22.47' S.W. to N.E. cor. bridge rail

8/11/82 R.W., D.B., J.B.

- E- Found stone (6" x 7" x 10") 12" below road surface. Placed center punched R.R. spike on surface over high point of stone. P.K.'s 6' N.E. & N.W. Stone is on the south edge of pavement.
- 24.18' N.W. to 5/8" iron pin on north edge of pavement
- 26.45' N.E. to 5/8" iron pin on north edge of pavement
- 82.84' E. to iron pin @ N1/4 post; Section 3; Van Buren Twp.; Putnam Co.

9-18-02

Mikes:
 Henry County Engineer
 Most Recent Ref. Ties.

Word from Construction:
 Work will begin at
 Henry/Putnam Co. Line.

PERSONNEL	TITLE	PERSONNEL	TITLE	COUNTY	DATE	WEATHER	TEMP.
BURNSIDE				HENRY	7-31-74	CLEAR	+82°
BOWERS				S. R. 65			
MEAD				SEC. 33 BARTLOW TWP			
KIJOWSKI							

DESCRIPTION REFERENCE TIES TO SECTION CORNERS

