

O.D.O.T. DISTRICT 2 SURVEY OFFICE (USE ONLY)

PERSONNEL _____ REFERENCE NO. 3 SHEET 4 OF 42
 NOTES RHOADES DATE 5/3/17 ROUTE SR 65
 H.C. O'DONNELL WEATHER SUNNY COUNTY HENRY
 R.C. HELDMAN TEMP. 46° TOWNSHIP BARTLOW
 _____ SECTION 33
 _____ T 3 N R 8 E

TYPE MONUMENT SM.R.R.SPIKE

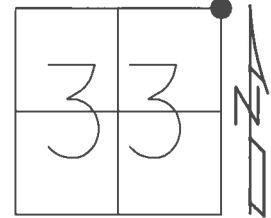
ON SURFACE - ~~BELOW~~ ON _____

LEFT - ☉ PAV'T - ~~RIGHT~~ 7', 1.7' S. OF ☉ W.

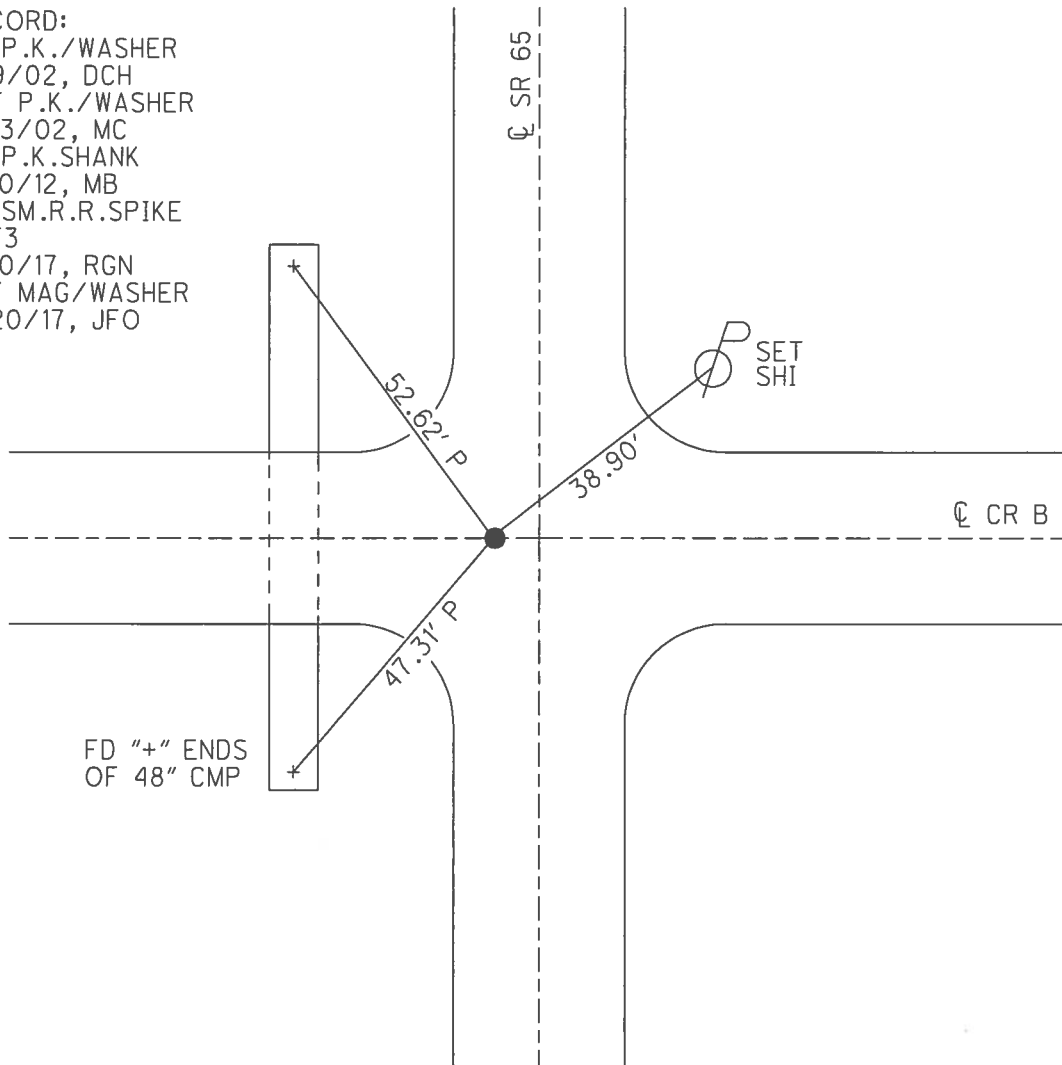
4.2' TO LT EDGE PAVEMENT

S.L.M. 52+98

GRID: NORTHING: 555306.258 EASTING: 1572441.385



RECORD:
 FD P.K./WASHER
 9/9/02, DCH
 SET P.K./WASHER
 11/13/02, MC
 FD P.K.SHANK
 7/10/12, MB
 FD SM.R.R.SPIKE
 REF3
 5/10/17, RGN
 SET MAG/WASHER
 9/20/17, JFO

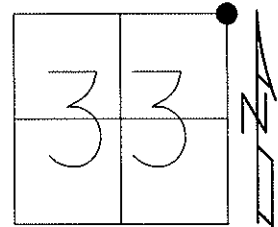


FD "+" ENDS
 OF 48" CMP

O.D.O.T. DISTRICT 2 SURVEY OFFICE (USE ONLY)

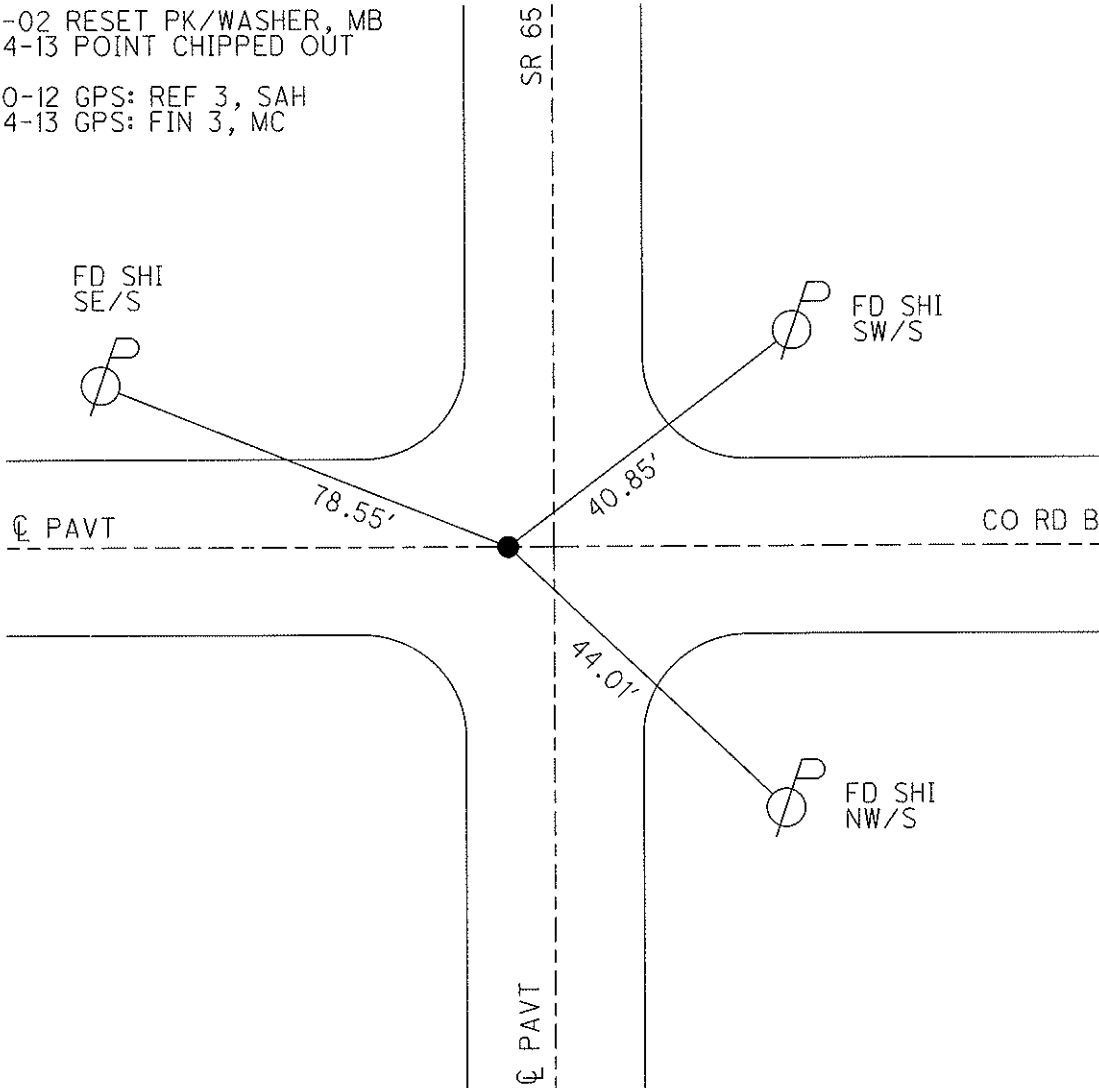
PERSONNEL	REFERENCE NO. <u>3</u>	SHEET <u>4</u> OF <u>42</u>
NOTES <u>BROWN</u>	DATE <u>07-10-12</u>	ROUTE <u>SR 65</u>
H.C. <u>HOMAN</u>	WEATHER <u>SUNNY</u>	COUNTY <u>HENRY</u>
R.C. <u>BROWN</u>	TEMP. <u>70°</u>	TOWNSHIP <u>BARTLOW</u>
		SECTION <u>33</u>
		T <u>3</u> N R <u>8</u> E

TYPE MONUMENT _____ SHANK _____
 ON SURFACE - BELOW _____ ON _____
 LEFT - $\text{\textcircled{C}}$ PAV'T - RIGHT 5.9', (1.7' S. OF $\text{\textcircled{C}}$ WEST)
4.2' TO LT EDGE PAVEMENT
 S.L.M. _____ 52+98



Grid: Northing: 555306.241 Easting: 1572441.359

11-13-02 RESET PK/WASHER, MB
 03-14-13 POINT CHIPPED OUT
 07-10-12 GPS: REF 3, SAH
 03-14-13 GPS: FIN 3, MC



O.D.O.T. DISTRICT 2 SURVEY OFFICE

PERSONNEL

REFERENCE NO. 3

SHEET 3 OF 29

NOTES BROWN

H.C. HOMAN

R.C. BROWN

DRAWN - BARNHISEL

DATE 9-9-02

WEATHER SUNNY

TEMP. +70°

ROUTE 65

COUNTY HENRY

TOWNSHIP BARTLOW

SECTION 33

T 3 N R 8 E

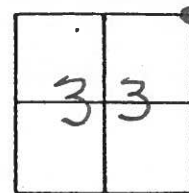
TYPE MONUMENT PK & WASHER

ON SURFACE - BELOW YES

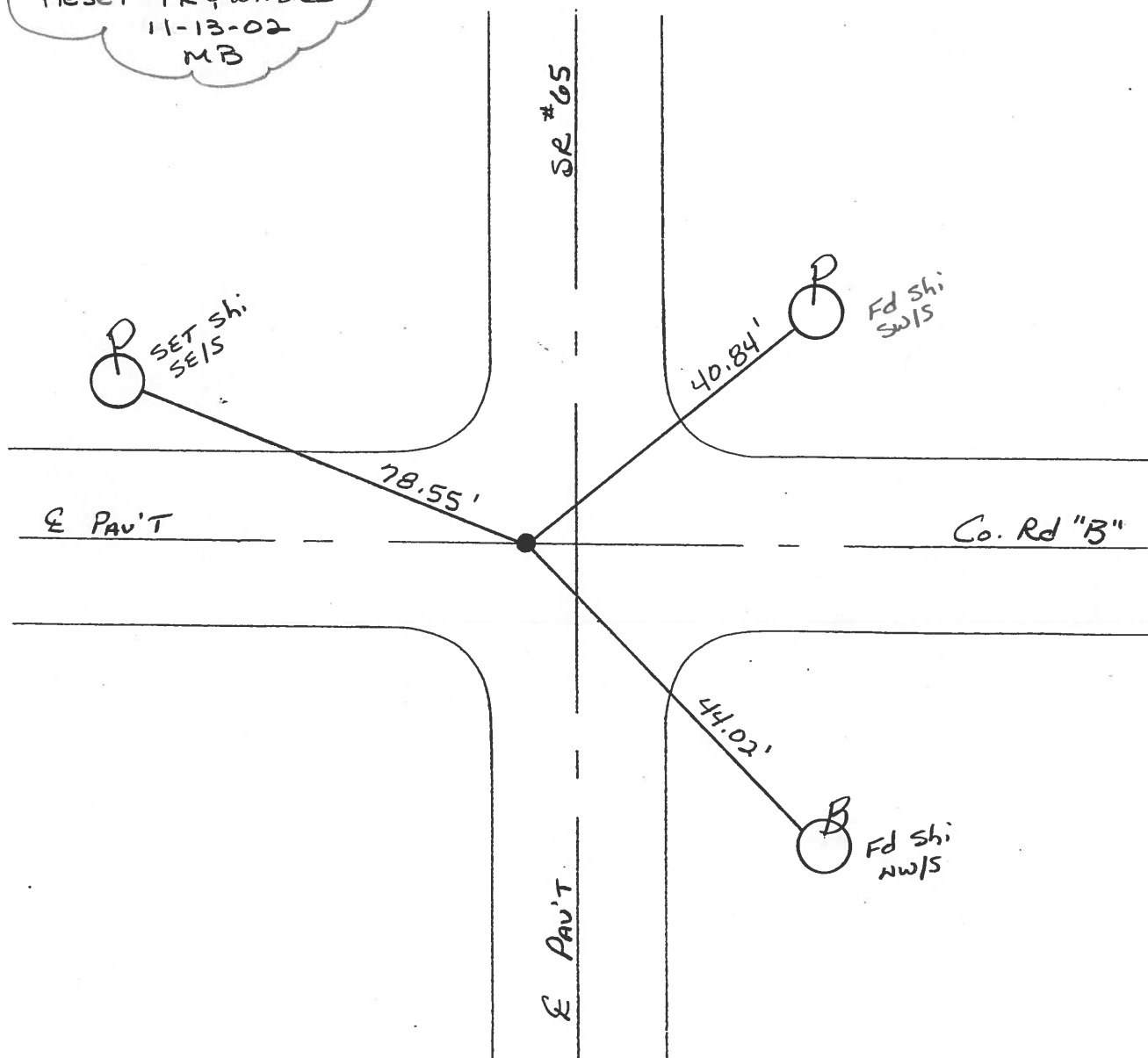
LEFT - ☉ PAV'T. - RIGHT 5.6'

4.8' TO LT EDGE PAVEMENT

S.L.M. 52+98



RESET PK & WASHER
 11-13-02
 MB



O.D.O.T. DISTRICT 2 SURVEY OFFICE

PERSONNEL

REFERENCE NO. 3

SHEET 3 OF 18

NOTES BARNHISEL

H.C. KUSZ

DATE 2-21-93

ROUTE 65

R.C. BARNHISEL

WEATHER SUNNY

COUNTY HENRY

OTTO P

TEMP. +75°F

TOWNSHIP BARTLOW

SECTION 33

T 3 NR 8 E

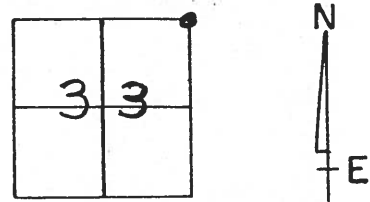
TYPE MONUMENT P.K. + WASHER

ON SURFACE - ~~BELOW~~ yes

LEFT- & PAV'T. - RIGHT 5.6

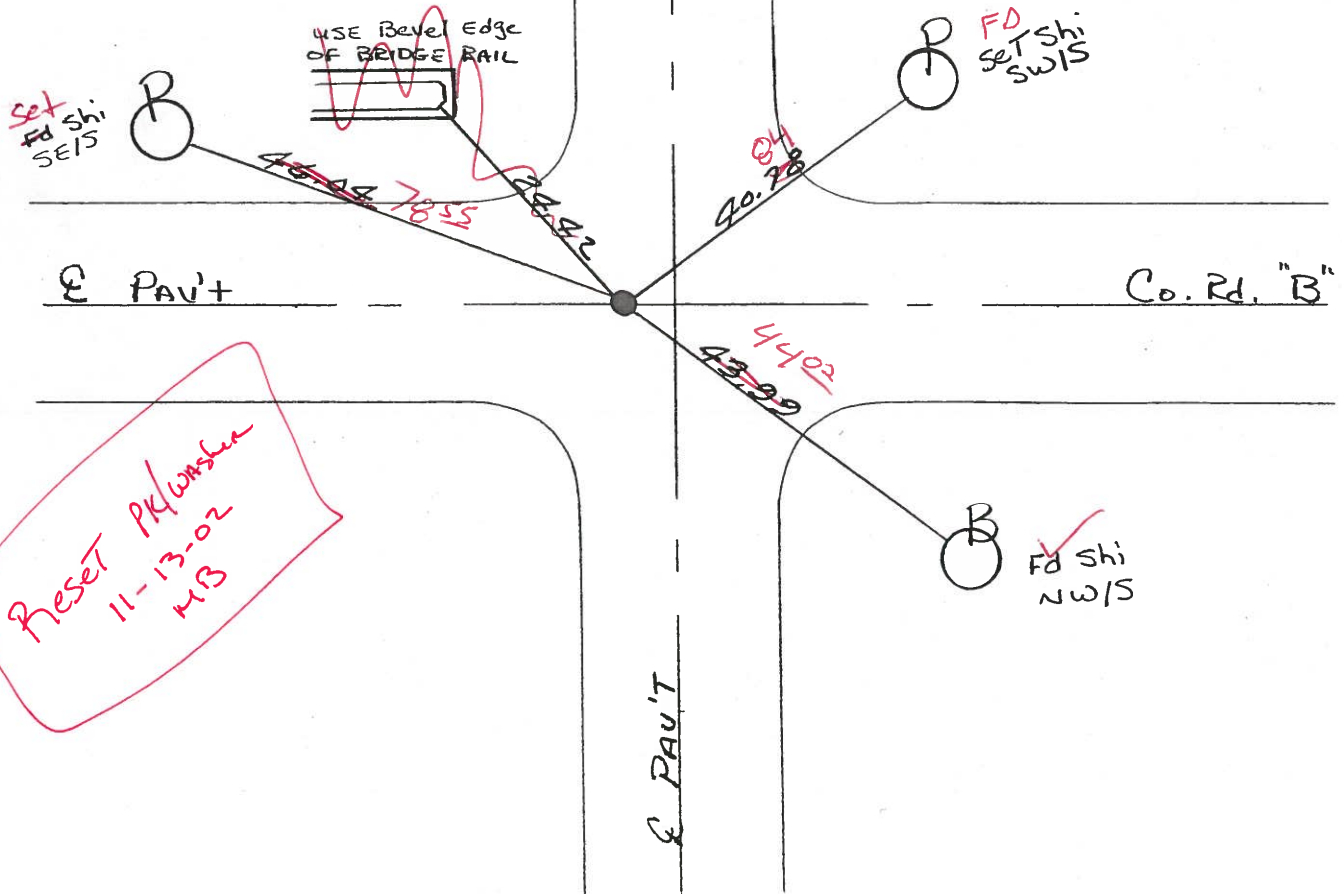
7.8 TO LT. EDGE PAVEMENT

S.L.M. 52+98



9-9-02
Sunny 70°
Homon. HC
Brown RC

SET PK & WASHER
10-13-93
MB



O.D.O.T. DISTRICT 2 SURVEY OFFICE

PERSONNEL

REFERENCE NO. 3

SHEET OF

NOTES HOFFMAN

H.C. BARNHISEL

R.C. LOEHRKE

DATE 3-26-85

WEATHER CLEAR-WINDY

TEMP. 60°

ROUTE SR 65

COUNTY HENRY

TOWNSHIP BARTLOW

SECTION 33

T 3 N R 8 E

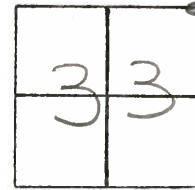
TYPE MONUMENT SMALL R.R. SPIKE

ON SURFACE BELOW

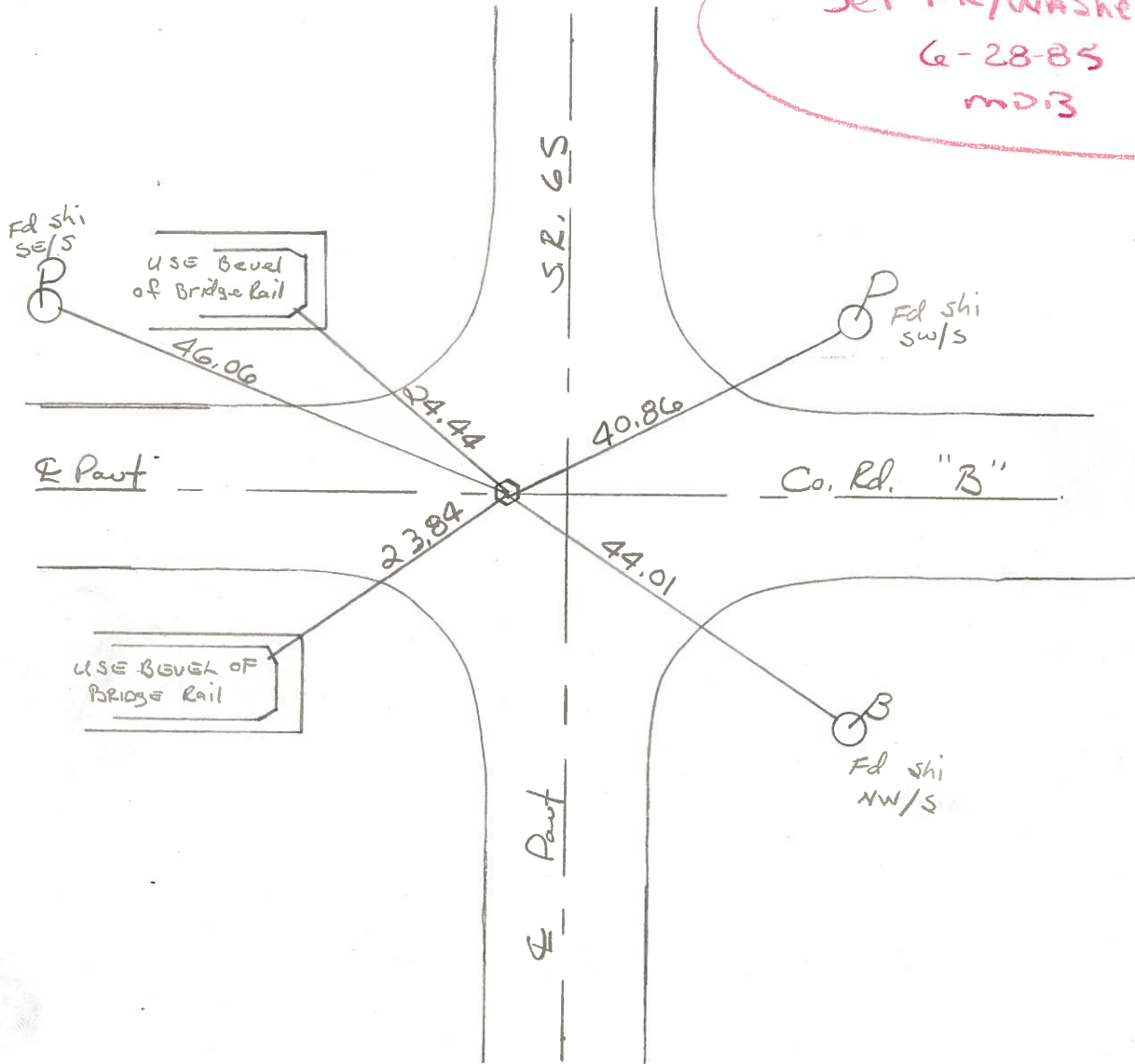
LEFT-& PAV'T. RIGHT 5.5

— TO — EDGE PAVEMENT

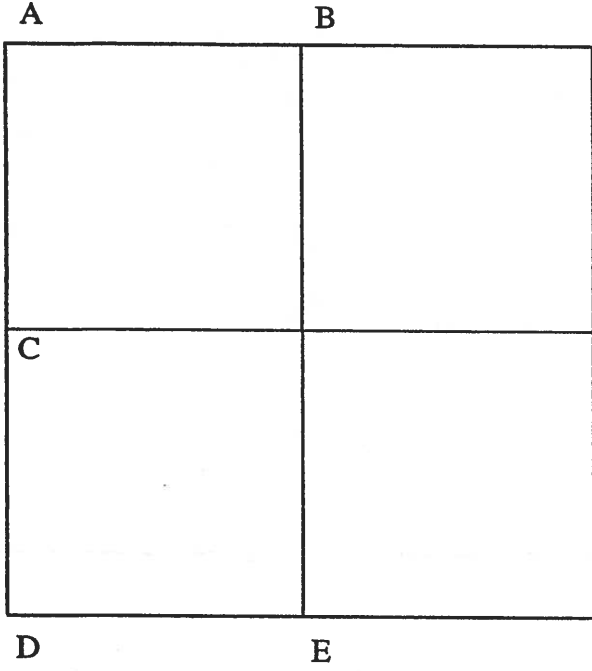
S.L.M. 52+84



Set PK/WASHER
6-28-85
MD3



3



COUNTY: HENRY

TOWNSHIP: BARTLOW

T- 3 -N R- 8 -E

SECTION: 34

7/23/82 R.W., D.B.

- A - Found small R.R. spike on surface.
- 3 46.04' W.N.W. to nail/shiner SW/S brace pole
- 24.45' N.W. to S.E. cor. conc. bridge rail
- 40.87' N.E. to nail/shiner SW/S power pole
- 44.01' S.E. to nail/shiner NW/S brace pole
- 23.84' S.W. to N.E. cor. conc. bridge rail

7/23/82 R.W., D.B.

- B - Found iron pin over high point of stone (10" x 10" x 16") 8" below road surface.
- Removed iron pin. Placed center punched R.R. spike on surface over high point of stone. P.K.'s 6' N&W. Stone is 5.2' north of south edge 16' pavement.
- 20.21' N.N.W. to P.K. nail W/S power pole
- 21.27' N. to duplex E/S wood post
- 34.45' S.W. to "+" S.E. bridge wing
- 18.72' S.W. to "+" N.E. bridge wing
- 40.47' S.W. to "+" N.W. bridge wing
- 47.10' S.W. to duplex NW/S power pole

PERSONNEL	TITLE	PERSONNEL	TITLE
BURNSIDE			
BOWERS			
KIJOWSKI			
MEAD			

COUNTY HENRY DATE 7-31-74
 S. R. 65 WEATHER CLEAR
 SEC. 33 BARTLOW Twp. TEMP. +82°

DESCRIPTION REFERENCE TIES TO SECTION CORNERS JOB NO. _____

