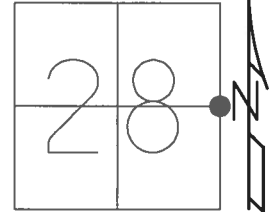


O.D.O.T. DISTRICT 2 SURVEY OFFICE (USE ONLY)

PERSONNEL \_\_\_\_\_ REFERENCE NO. 4 SHEET 5 OF 42

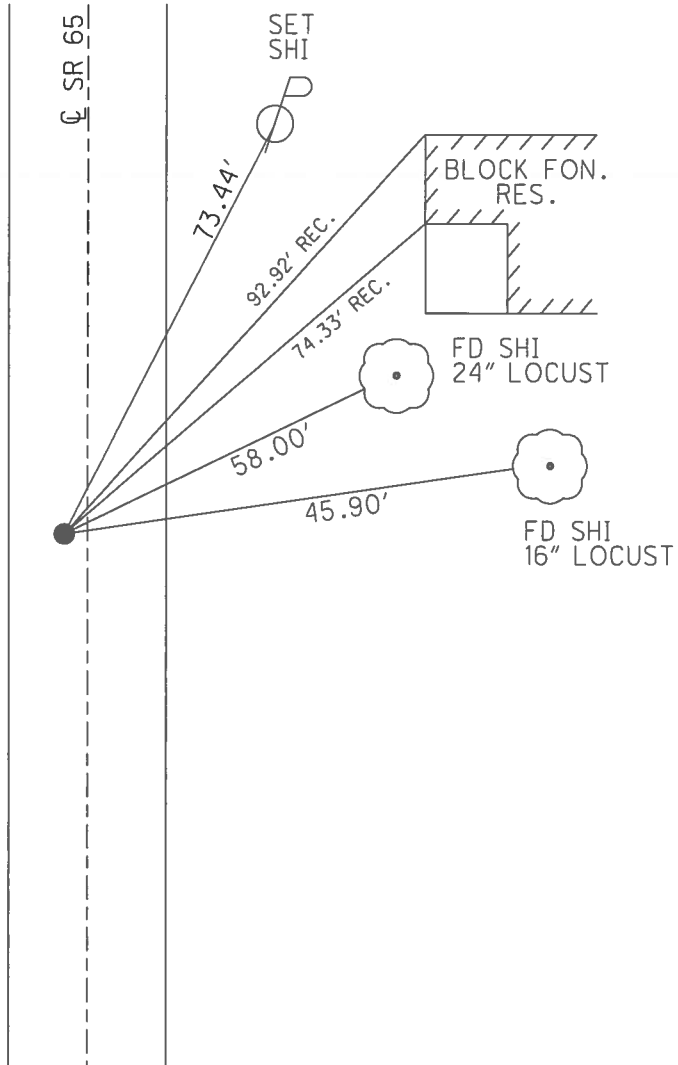
NOTES RHOADES DATE 5/3/17 ROUTE SR 65  
 H.C. O'DONNELL WEATHER SUNNY COUNTY HENRY  
 R.C. HELDMAN TEMP. 46° TOWNSHIP BARTLOW  
 \_\_\_\_\_ SECTION 28  
 \_\_\_\_\_ T 3 N R 8 E

TYPE MONUMENT PK/WASHER  
 ON SURFACE - ~~BELOW~~ ON \_\_\_\_\_  
 LEFT - ☐ PAV'T - ~~RIGHT~~ 1.0'  
9.2' TO LT EDGE PAVEMENT  
 S.L.M. 79+63



GRID: NORTHING: 557962.812 EASTING: 1572464.422

- RECORD:  
 FD P.K./WASHER  
 9/9/02, DCH  
 SET P.K./WASHER  
 11/14/02, MB  
 FD P.K./WASHER  
 7/10/12, SAH  
 FD P.K./WASHER  
 REF4  
 5/10/17, JFO  
 SET MAG/WASHER  
 9/20/17, JFO



O.D.O.T. DISTRICT 2 SURVEY OFFICE (USE ONLY)

PERSONNEL \_\_\_\_\_

REFERENCE NO. 4

SHEET 5 OF 42

NOTES BROWN

DATE 09-09-02

ROUTE SR 65

H.C. HOMAN

WEATHER SUNNY

COUNTY HENRY

R.C. BROWN

TEMP. 70°

TOWNSHIP BARTLOW

SECTION 28

T 3 N R 8 E

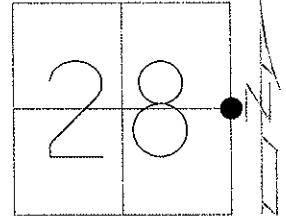
TYPE MONUMENT \_\_\_\_\_ PK/WASHER \_\_\_\_\_

ON SURFACE - BELOW \_\_\_\_\_ ON \_\_\_\_\_

LEFT - Q PAV'T - RIGHT \_\_\_\_\_ 1.0'

9.2' TO LT. EDGE PAVEMENT

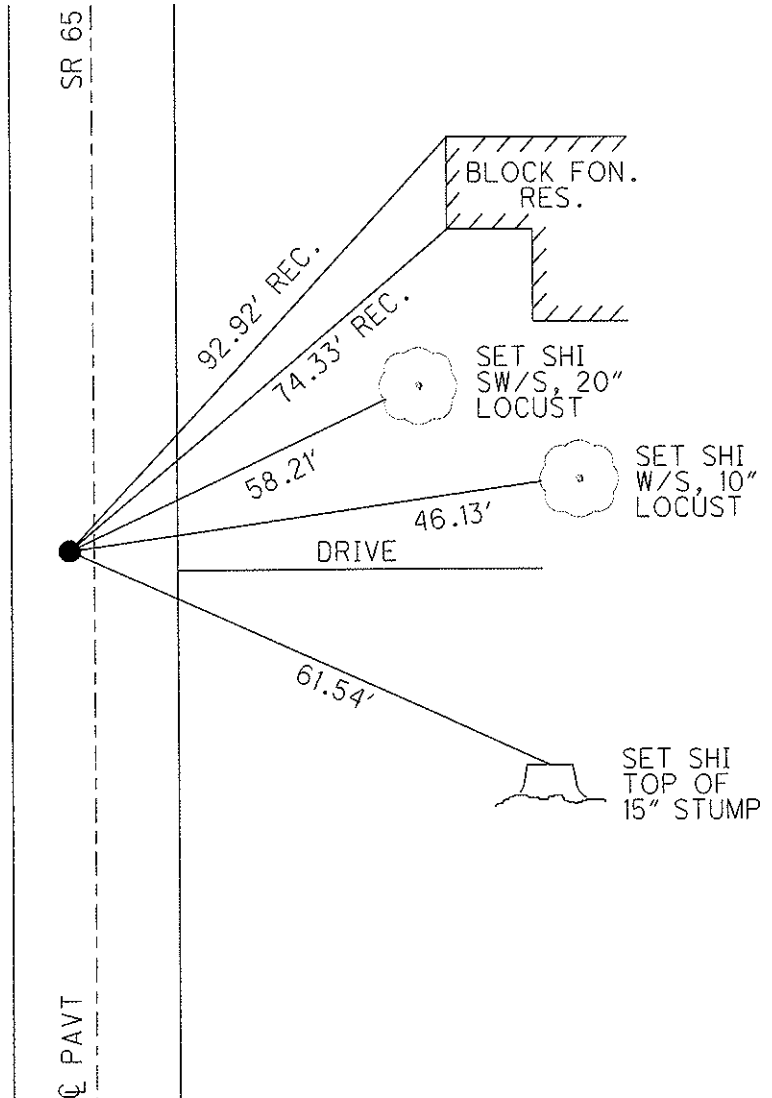
S.L.M. \_\_\_\_\_ 79+63 \_\_\_\_\_



Grid: Northing: 557962.850 Easting: 1572464.405

11-14-02 RESET PK/WASHER, MB  
03-14-13 POINT CHIPPED OIT

07-10-12 GPS: REF 4, SAH  
03-14-13 GPS: FIN 4, MC



# O.D.O.T. DISTRICT 2 SURVEY OFFICE

PERSONNEL \_\_\_\_\_

REFERENCE NO. 4 SHEET 4 OF 29

NOTES Brown

H.C. Homan

R.C. Brown

DRAWN - BARNHISEL

DATE 9-9-02

WEATHER SUNNY

TEMP. +70°

ROUTE 65

COUNTY HENRY

TOWNSHIP BARTLOW

SECTION 28

T 3 N R 8 E

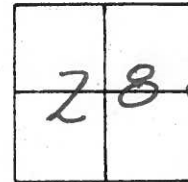
TYPE MONUMENT PK & WASHER

ON SURFACE - BELOW YES

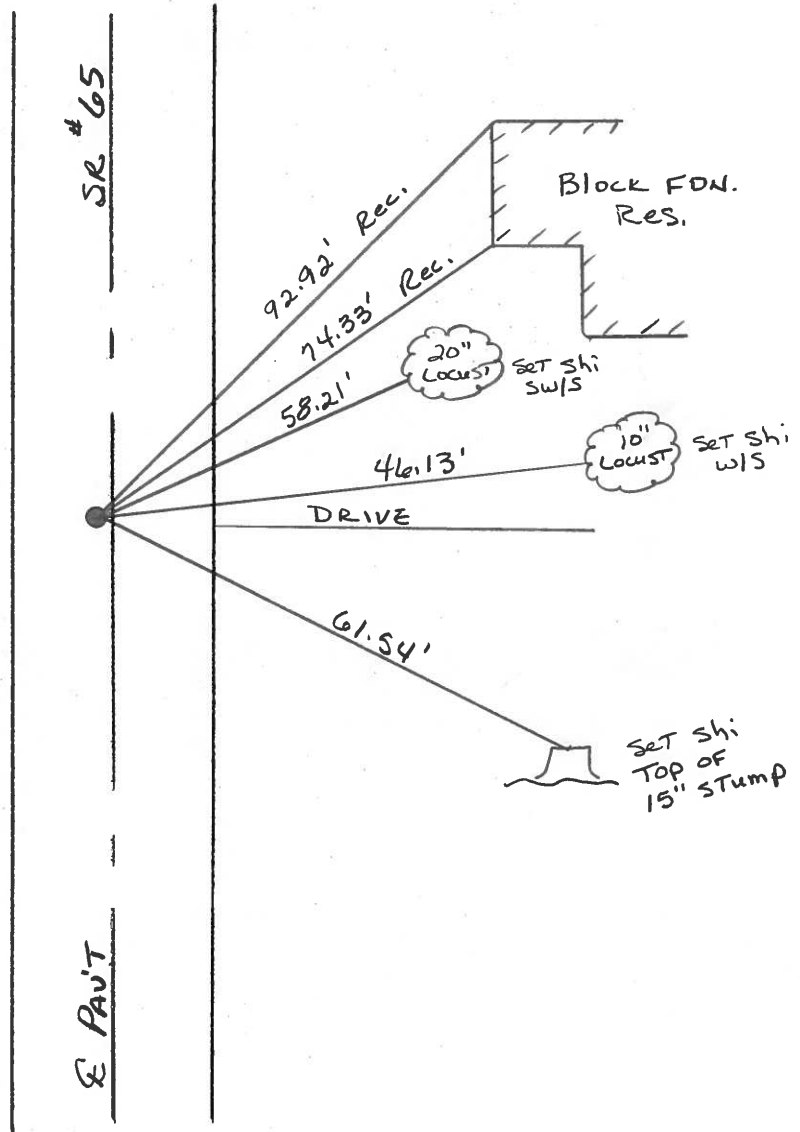
LEFT - & PAV'T. - RIGHT 1.0'

9.2' TO LT EDGE PAVEMENT

S.L.M. 79+63



Reset PK & WASHER  
11-14-02  
MB



# O.D.O.T. DISTRICT 2 SURVEY OFFICE

PERSONNEL

REFERENCE NO. 4

SHEET 4 OF 18

NOTES BARNHISEL

H.C. KUSE

DATE 2-21-93

ROUTE S.R. 65

R.C. BARNHISEL

WEATHER SUNNY

COUNTY Henry

OTTO P

TEMP. + 25° F

TOWNSHIP Bartlow

SECTION 28

T. 3 N. R. 8 E.

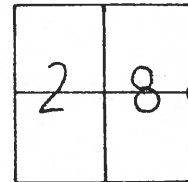
TYPE MONUMENT Pk/washer ✓

ON SURFACE - BELOW YES ✓

LEFT-☉ PAV'T. - RIGHT 1.0 ✓

9.2 TO LT. EDGE PAVEMENT

S.L.M. 79+63 ✓



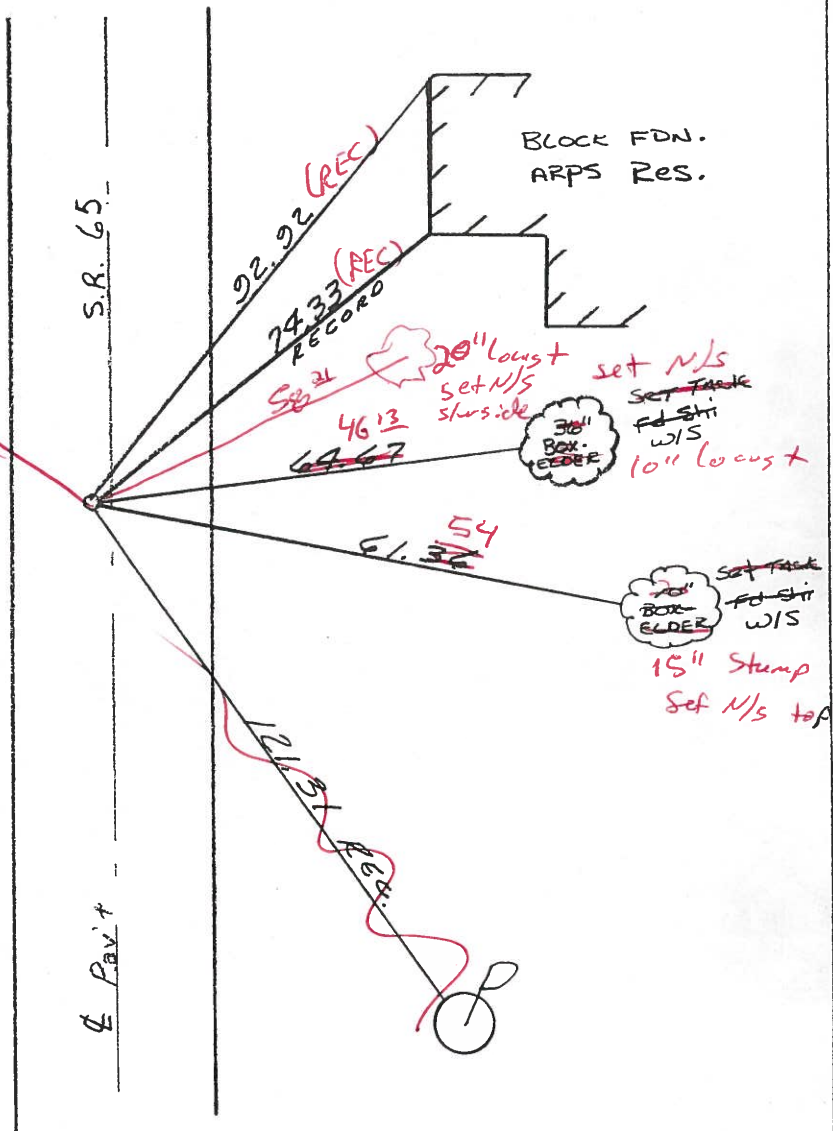
SET PK & WASHER  
 10-13-93  
 MB

Sunny +70° 9-9-02

Homan RC  
Brown H.C. ↗

Fd. PK & washer

RESET PK/washer  
 11-14-02  
 MB



# O.D.O.T. DISTRICT 2 SURVEY OFFICE

PERSONNEL

REFERENCE NO. 4

SHEET      OF     

NOTES HOFFMAN

H.C. BARNHISEL

R.C. LOHRKE

DATE 3-26-85

WEATHER CLEAR-WINDY

TEMP. 60°

ROUTE SR 65

COUNTY HENRY

TOWNSHIP BALDWIN

SECTION 28

T.3 N. R. 8 E

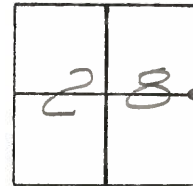
TYPE MONUMENT SMALL R.R. SPIKE

ON SURFACE -BELOW-

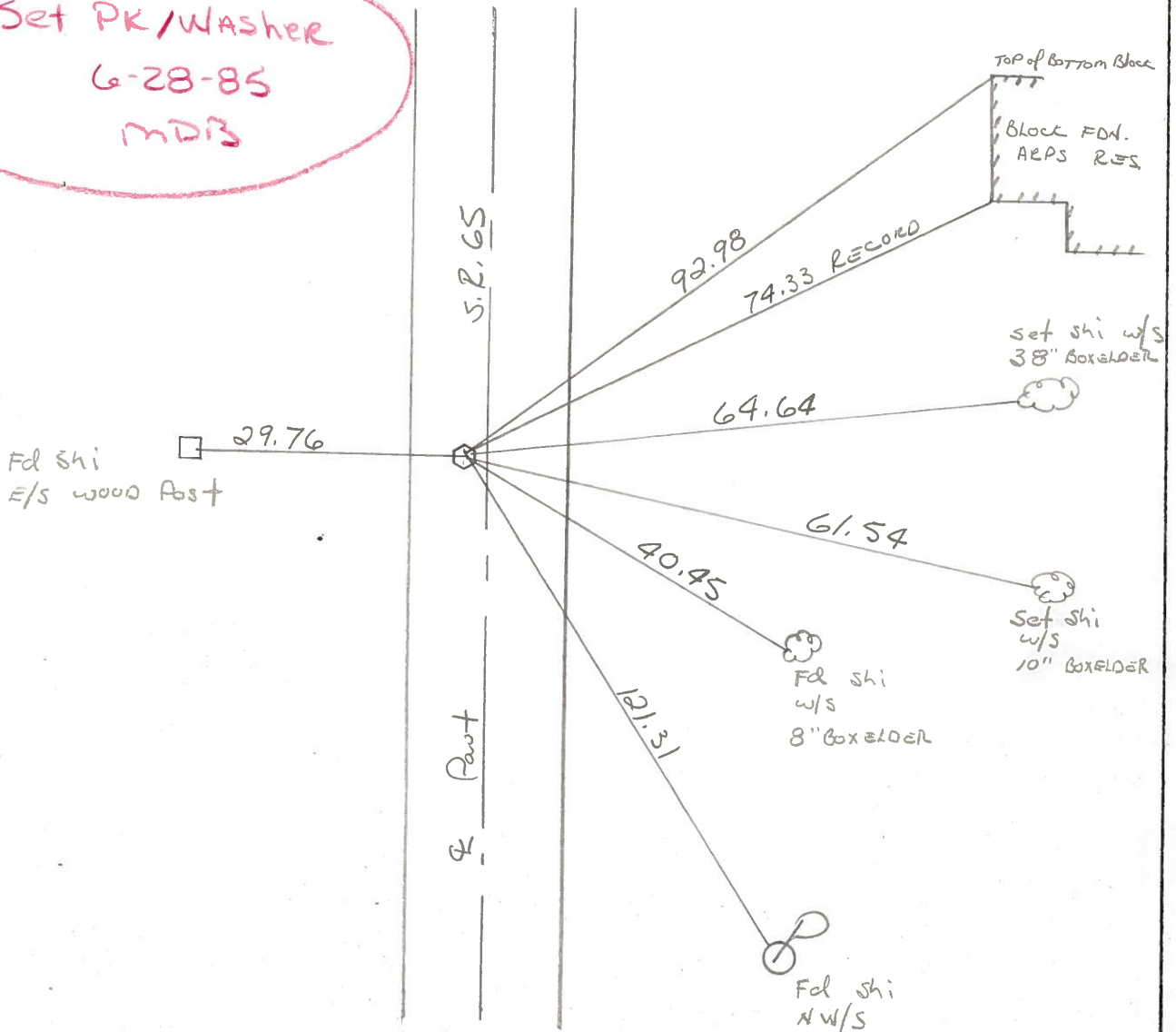
LEFT-   PAV'T. RIGHT 1.4'

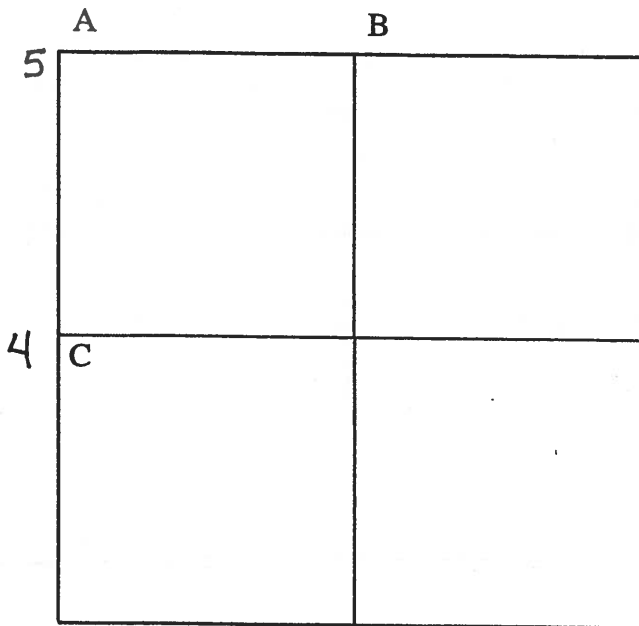
B.S. TO LT. EDGE PAVEMENT

S.L.M. 79+40



Set PK/Washer  
 6-28-85  
 MDJ





COUNTY: HENRY

TOWNSHIP: BARTLOW

T-3-N R-8-E

SECTION: 27

6/23/82 R.W., D.B., J.B.

A - Found small R.R. spike on surface 3' west of centerline pavement.

- 5  
 35.77' N.E. to nail/shiner SW/S power pole  
 47.47' S.E. to nail/shiner W/S telephone pole  
 48.83' S.W. to nail/shiner NE/S telephone pole  
 49.53' N.W. to duplex NE/S 15" Maple

7/14/82 R.W., D.B., J.B.

B - Found iron pipe angled over high point of stone (6" x 12" x 12") 16" below grade. Stone is 1.5' south of south edge pavement. Set P.K.'s 6' N.E. & N.W.

- 82.05' W.N.W. to duplex S/S power pole  
 131.88' E.N.E. to duplex S/S power pole  
 90.18' E.S.E. to duplex SW/S power pole  
 22.34' S. to P.K. nail W/S wood post

7/23/82 R.W., D.B.

C - Found small R.R. spike 1'+/- west of centerline pavement.

- 4  
 134.71' N.N.E. to duplex W/S power pole  
 93.00' N.E. to N.W. cor. block house foundation  
 74.28' N.E. to S.W. cor. block house foundation  
 121.28' S.S.E. to nail/shiner NW/S power pole  
 29.73' W. to nail/shiner W/S wood post

