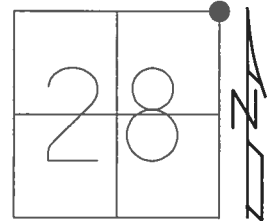


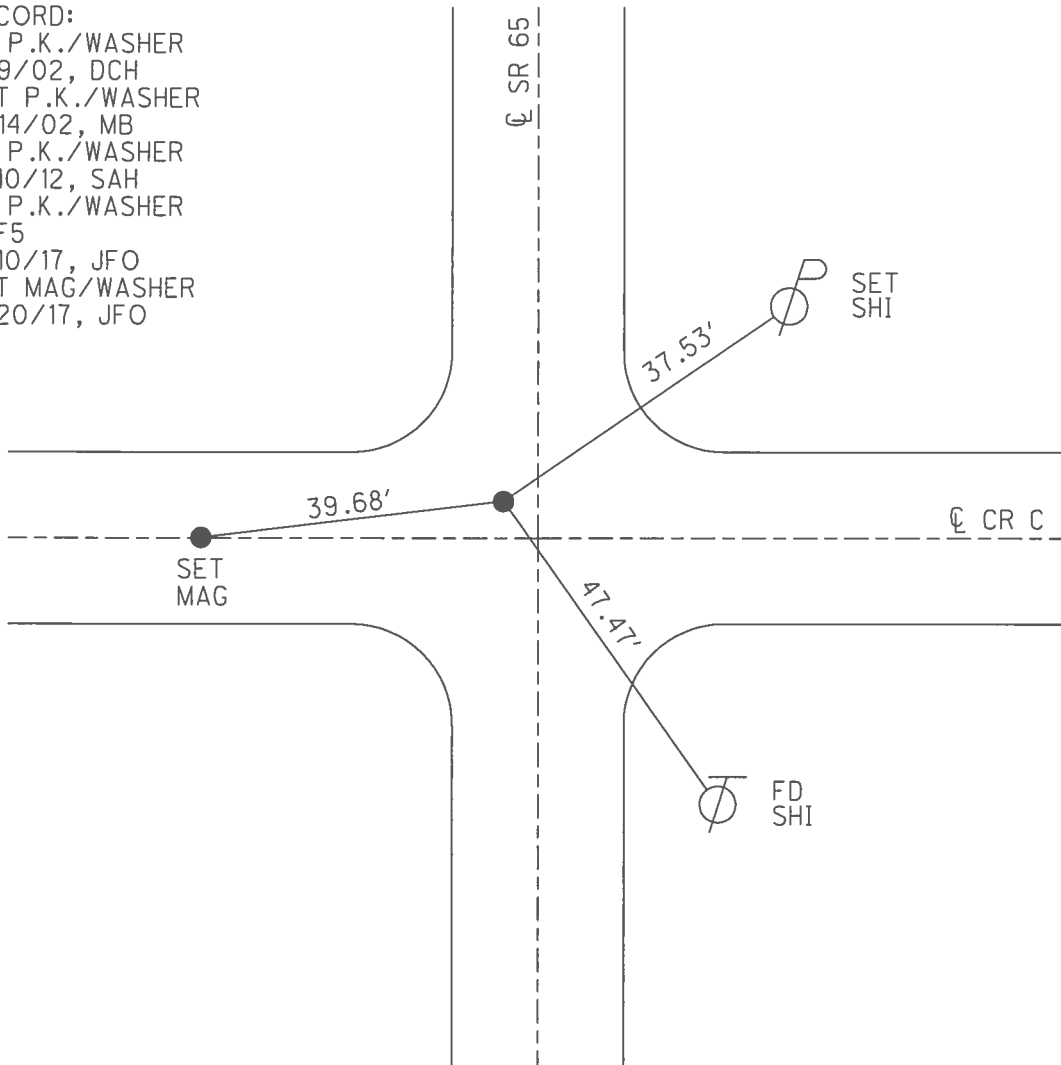
O.D.O.T. DISTRICT 2 SURVEY OFFICE (USE ONLY)

PERSONNEL _____ REFERENCE NO. 5 SHEET 6 OF 42
 NOTES RHOADES DATE 5/3/17 ROUTE SR 65
 H.C. O'DONNELL WEATHER SUNNY COUNTY HENRY
 R.C. HELDMAN TEMP. 46° TOWNSHIP BARTLOW
 _____ SECTION 28
 _____ T 3 N R 8 E

TYPE MONUMENT PK/WASHER
 ON SURFACE - ~~BELOW~~ ON _____
 LEFT - ☉ PAV'T - ~~RIGHT~~ 3.0'
7.3' TO LT. EDGE PAVEMENT
 S.L.M. 106+28
 GRID: NORTHING: 560619.930 EASTING: 1572457.468



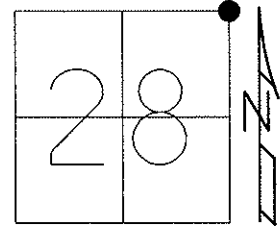
RECORD:
 FD P.K./WASHER
 9/9/02, DCH
 SET P.K./WASHER
 11/14/02, MB
 FD P.K./WASHER
 7/10/12, SAH
 FD P.K./WASHER
 REF5
 5/10/17, JFO
 SET MAG/WASHER
 9/20/17, JFO



O.D.O.T. DISTRICT 2 SURVEY OFFICE (USE ONLY)

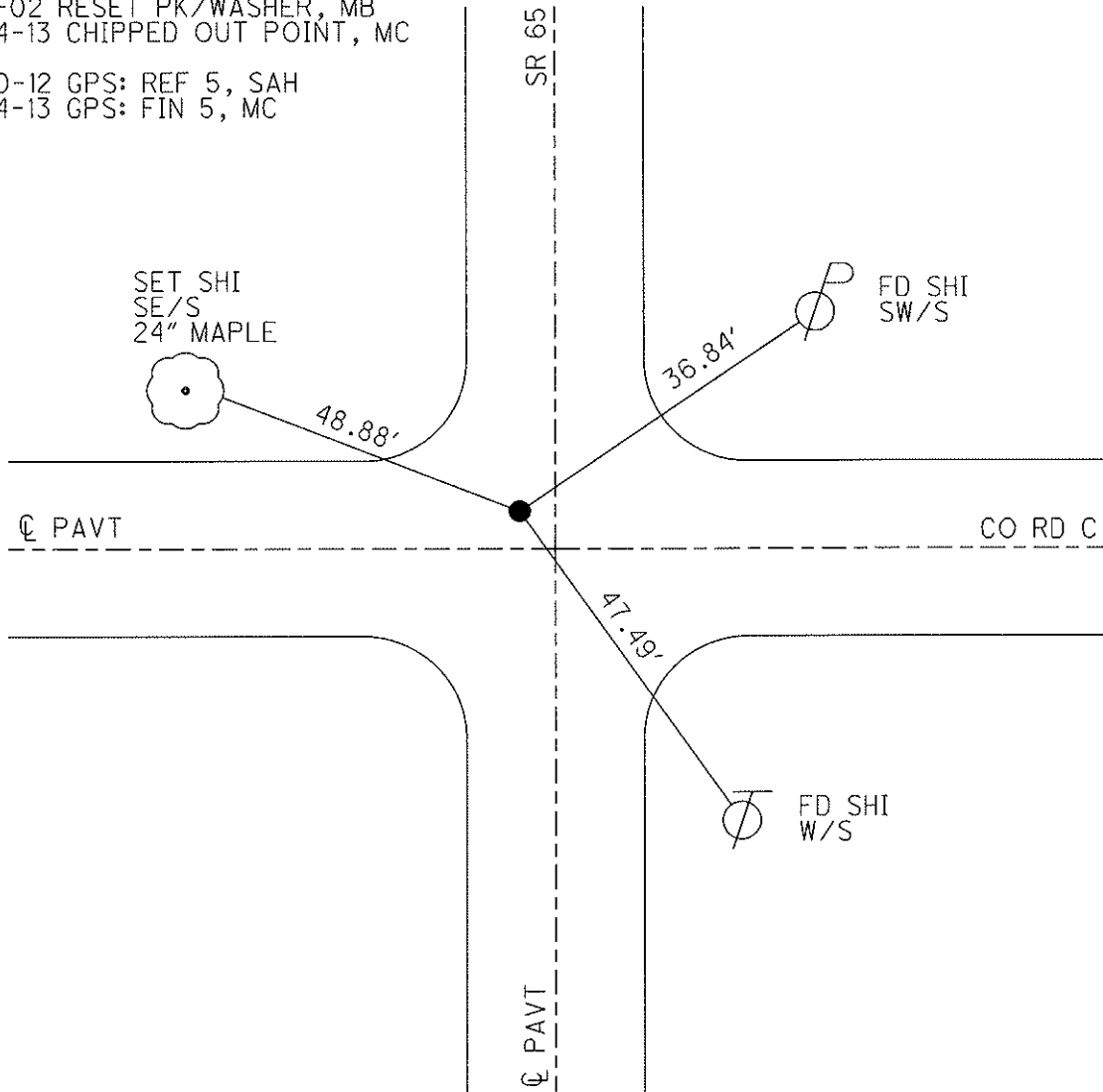
PERSONNEL	REFERENCE NO. <u>5</u>	SHEET <u>6</u> OF <u>42</u>
NOTES <u>BROWN</u>	DATE <u>09-09-02</u>	ROUTE <u>SR 65</u>
H.C. <u>HOMAN</u>	WEATHER <u>SUNNY</u>	COUNTY <u>HENRY</u>
R.C. <u>BROWN</u>	TEMP. <u>70°</u>	TOWNSHIP <u>BARTLOW</u>
		SECTION <u>28</u>
		T <u>3</u> N R <u>8</u> E

TYPE MONUMENT _____ PK/WASHER _____
 ON SURFACE - BELOW _____ ON _____
 LEFT - \odot PAV'T - RIGHT _____ 3.0'
 _____ 7.3' TO LT. EDGE PAVEMENT
 S.L.M. _____ 106+28



Grid: Northing: 560619.964 Easting: 1572457.448

11-14-02 RESET PK/WASHER, MB
 03-14-13 CHIPPED OUT POINT, MC
 07-10-12 GPS: REF 5, SAH
 03-14-13 GPS: FIN 5, MC



O.D.O.T. DISTRICT 2 SURVEY OFFICE

PERSONNEL

REFERENCE NO. 5

SHEET 5 OF 29

NOTES BROWN

H.C. HOMAN

R.C. BROWN

DRAWN - BARNHISEL

DATE 9-9-02

WEATHER SUNNY

TEMP. +70°

ROUTE 65

COUNTY HENRY

TOWNSHIP BARTLOW

SECTION 28

T 3 N R 8 E

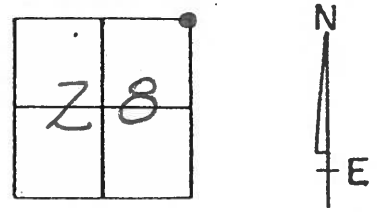
TYPE MONUMENT PK $\frac{1}{2}$ WASHER

ON SURFACE - BELOW YES

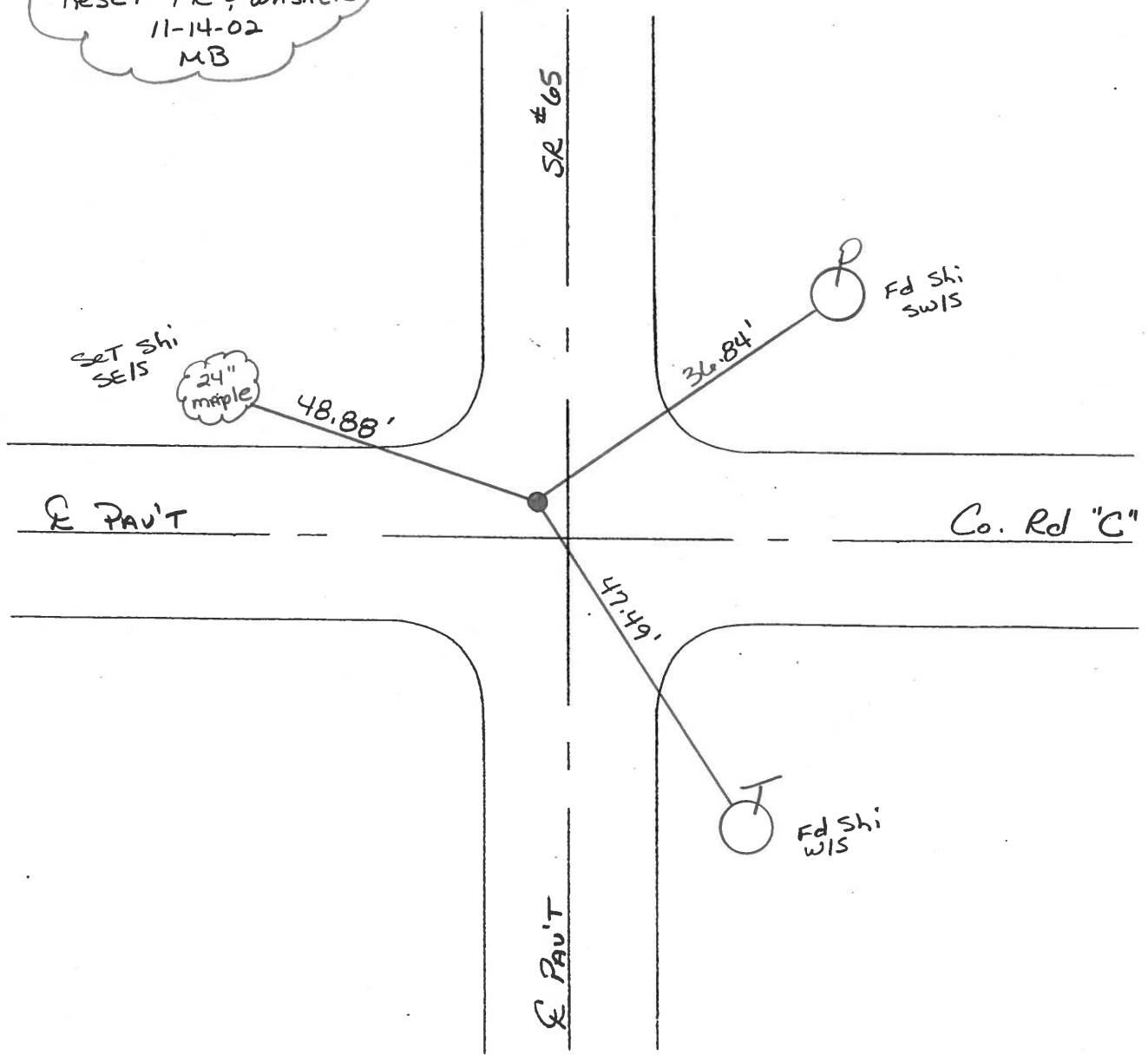
LEFT - PAV'T. - RIGHT 3.0'

7.3' TO LT EDGE PAVEMENT

S.L.M. 106 + 28



RESET PK $\frac{1}{2}$ WASHER
11-14-02
MB



O.D.O.T. DISTRICT 2 SURVEY OFFICE

PERSONNEL

REFERENCE NO. 5

SHEET 5 OF 18

NOTES BARNHISEL

H.C. KUSZ

DATE 7-21-93

ROUTE S.R. 65

R.C. BARNHISEL

WEATHER SUNNY

COUNTY Henry

OTTO A

TEMP. +75°F

TOWNSHIP Bartlow

SECTION 28

T. 3 N. R. 8 E

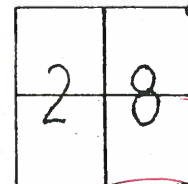
TYPE MONUMENT P.K. + WASHER ✓

ON SURFACE - ~~BELOW~~ YES ✓

LEFT - 0 PAV'T. - RIGHT 3.0 ✓

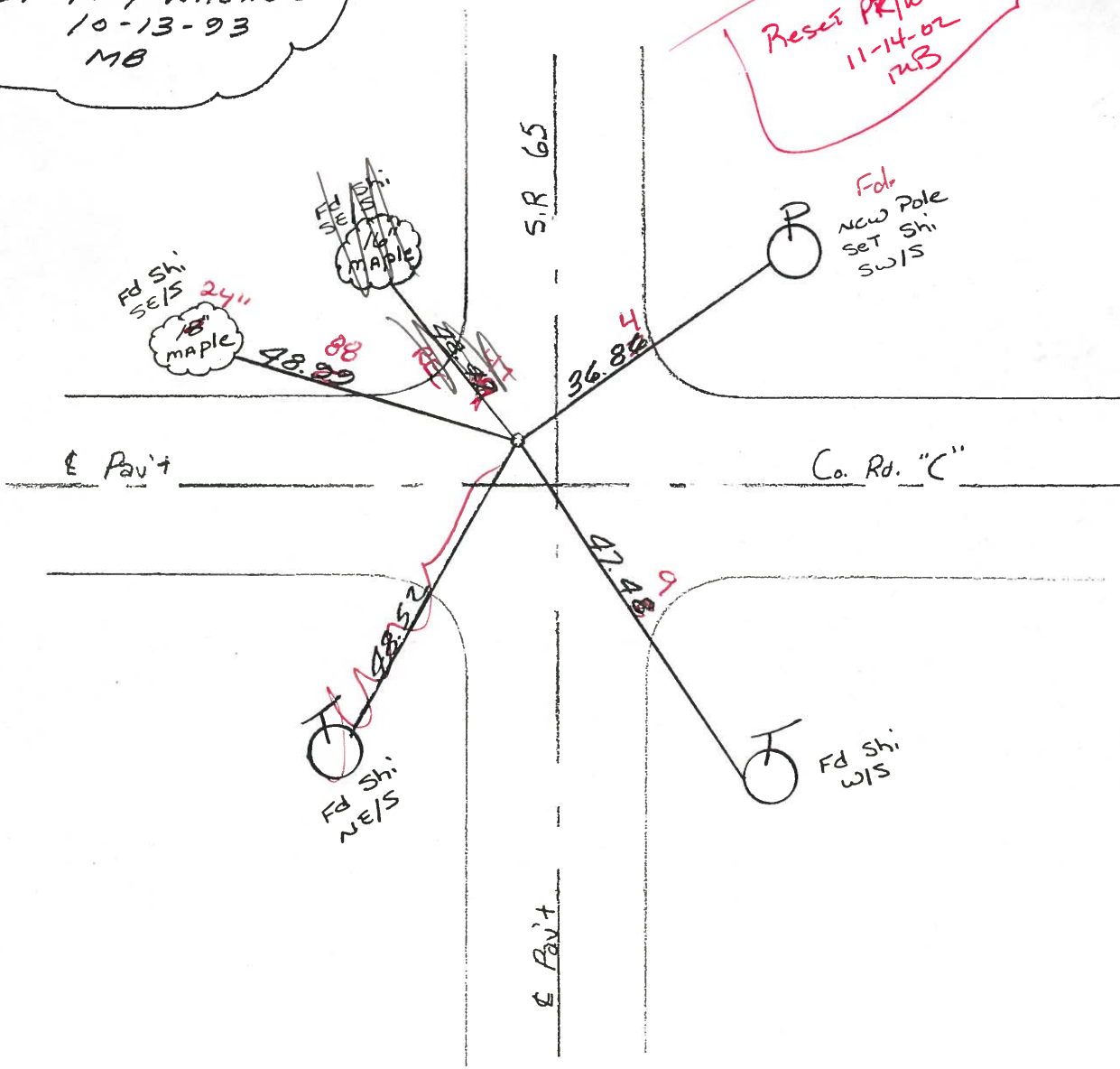
2.3 TO 4.7 EDGE PAVEMENT

S.L.M. 106 + 28 ✓



SET PK & WASHER
10-13-93
MB

Reset PK/Washer
11-14-02
MB



O.D.O.T. DISTRICT 2 SURVEY OFFICE

PERSONNEL

REFERENCE NO. 5

SHEET OF

NOTES Hoffman

H.C. BAZNHISEL

R.C. LOSHRKE

DATE 5-15-30

WEATHER cloudy

TEMP. 70°

ROUTE SR 65

COUNTY HENRY

TOWNSHIP BARTLOW

SECTION 28

T. 3 N. R. 8 E.

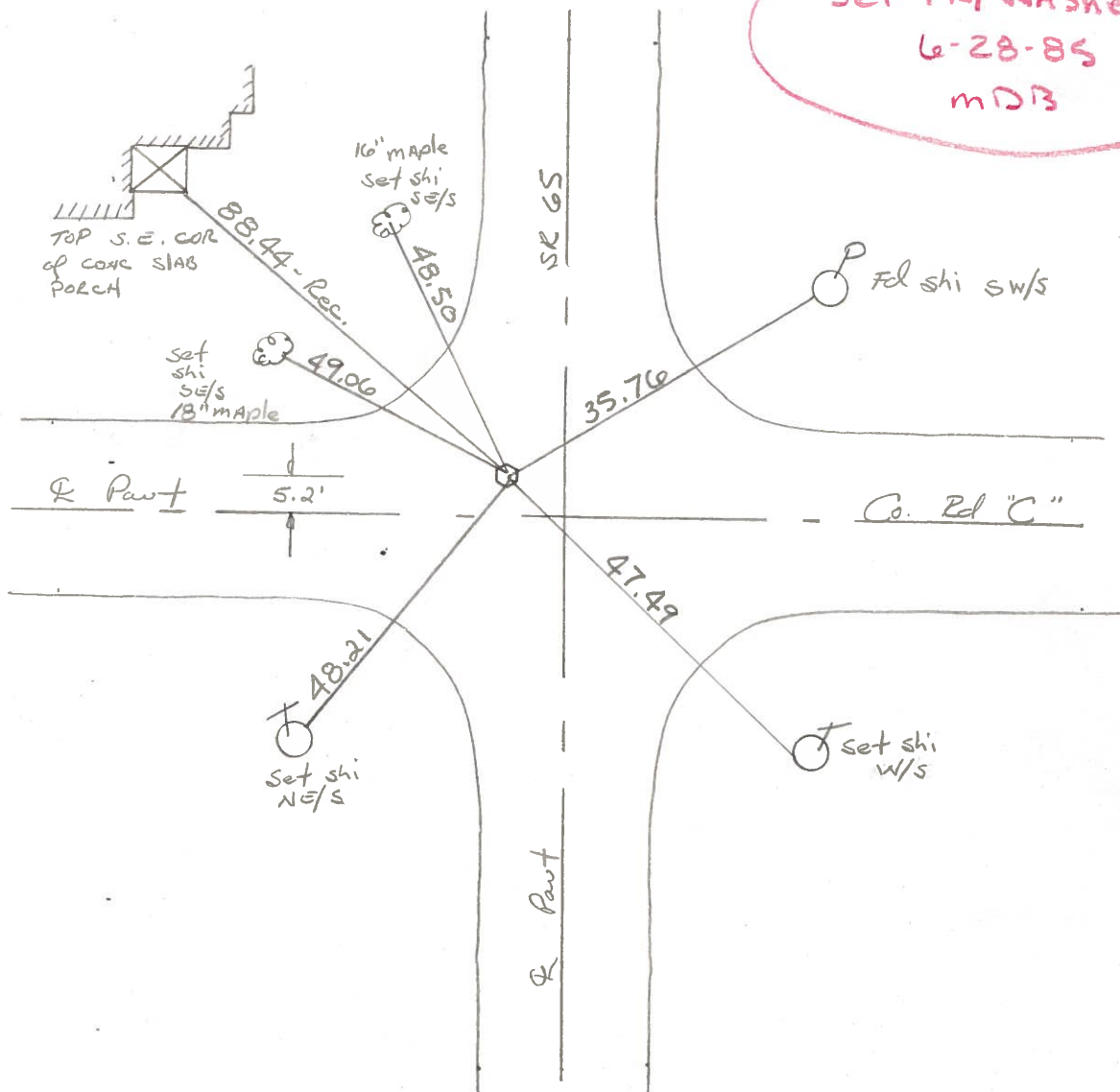
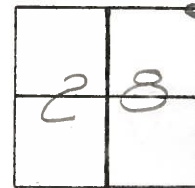
TYPE MONUMENT small R.R. SPIKE

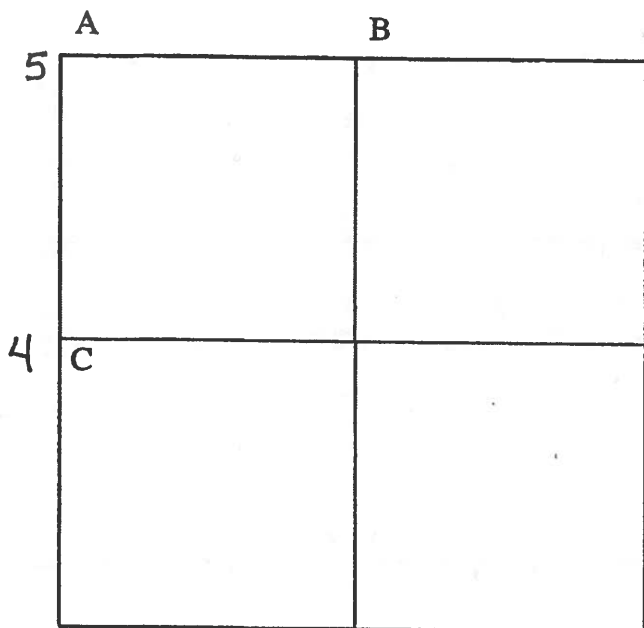
ON SURFACE - BELOW -

LEFT- & PAV'T. - RIGHT 3.0

- TO - EDGE PAVEMENT

S.L.M. 105 + 98





COUNTY: HENRY

TOWNSHIP: BARTLOW

T- 3 -N R- 8 -E

SECTION: 27

6/23/82 R.W., D.B., J.B.
 A - Found small R.R. spike on surface 3' west of centerline pavement.
 5 35.77' N.E. to nail/shiner SW/S power pole
 47.47' S.E. to nail/shiner W/S telephone pole
 48.83' S.W. to nail/shiner NE/S telephone pole
 49.53' N.W. to duplex NE/S 15" Maple

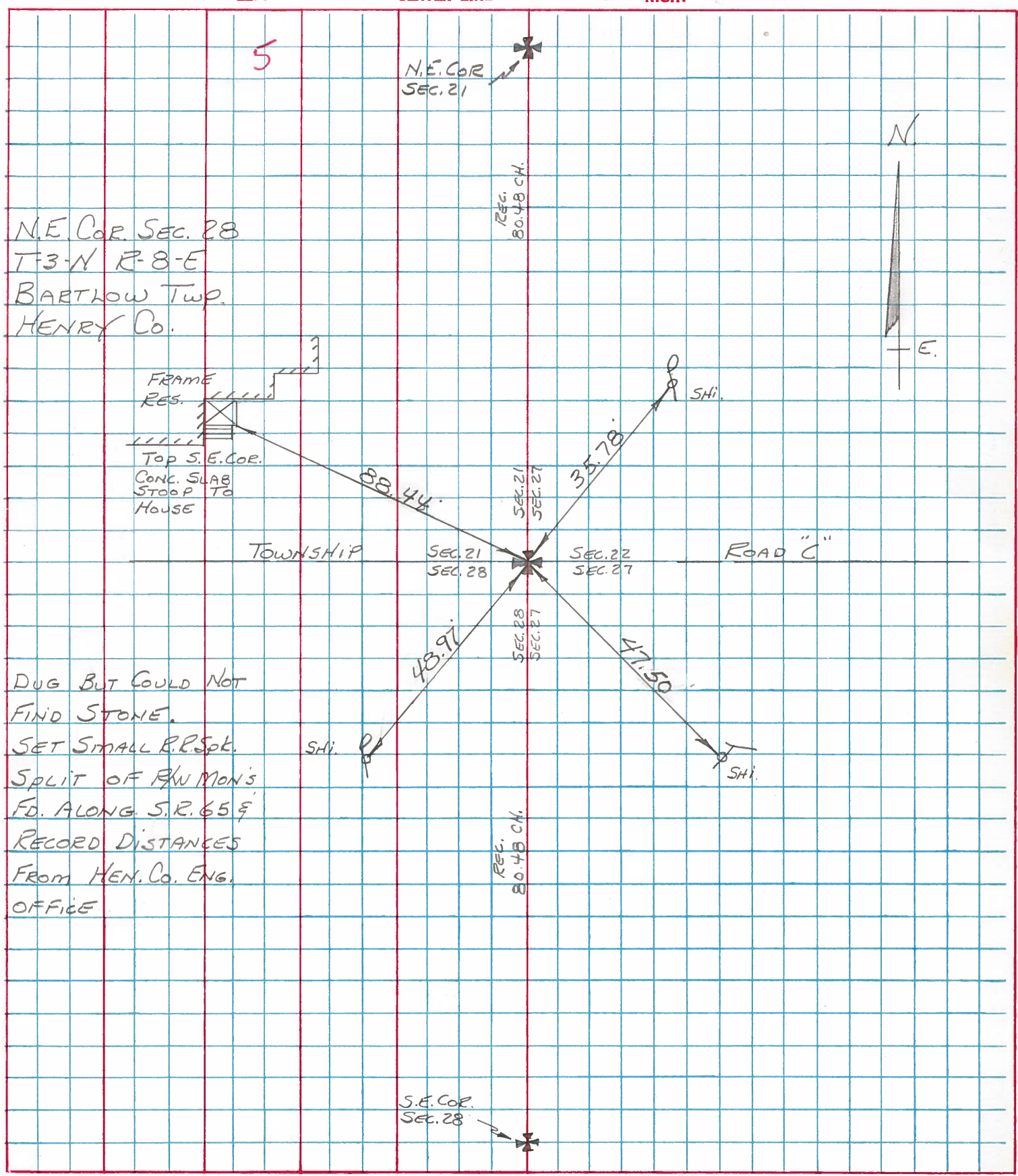
7/14/82 R.W., D.B., J.B.
 B - Found iron pipe angled over high point of stone (6" x 12" x 12") 16" below grade. Stone is 1.5' south of south edge pavement. Set P.K.'s 6' N.E. & N.W.
 82.05' W.N.W. to duplex S/S power pole
 131.88' E.N.E. to duplex S/S power pole
 90.18' E.S.E. to duplex SW/S power pole
 22.34' S. to P.K. nail W/S wood post

7/23/82 R.W., D.B.
 C - Found small R.R. spike 1'+/- west of centerline pavement.
 4 134.71' N.N.E. to duplex W/S power pole
 93.00' N.E. to N.W. cor. block house foundation
 74.28' N.E. to S.W. cor. block house foundation
 121.28' S.S.E. to nail/shiner NW/S power pole
 29.73' W. to nail/shiner W/S wood post

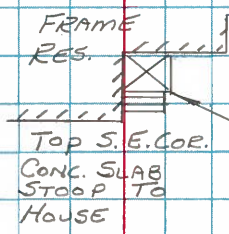
PERSONNEL	TITLE	PERSONNEL	TITLE
BURNSIDE			
SMITH			
BOWERS			
MEAD			

COUNTY HENRY DATE 11-25-74
 S. R. 65 WEATHER PT. CLOUDY
 BARTLOW TWP.
 SEC. N.E. COR. SEC. 28 TEMP. +34°

DESCRIPTION REF. TO SEC. COR. LEFT CENTER LINE RIGHT JOB NO.



N.E. COR. SEC. 28
 T-3-N R-8-E
 BARTLOW TWP.
 HENRY CO.



DUG BUT COULD NOT
 FIND STONE.
 SET SMALL R.P. Spt.
 SPLIT OF R.W. MON'S
 FD. ALONG S.R. 65 &
 RECORD DISTANCES
 FROM HEN. CO. ENG.
 OFFICE

