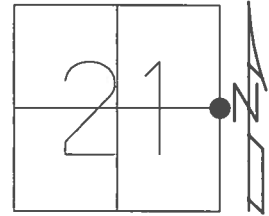


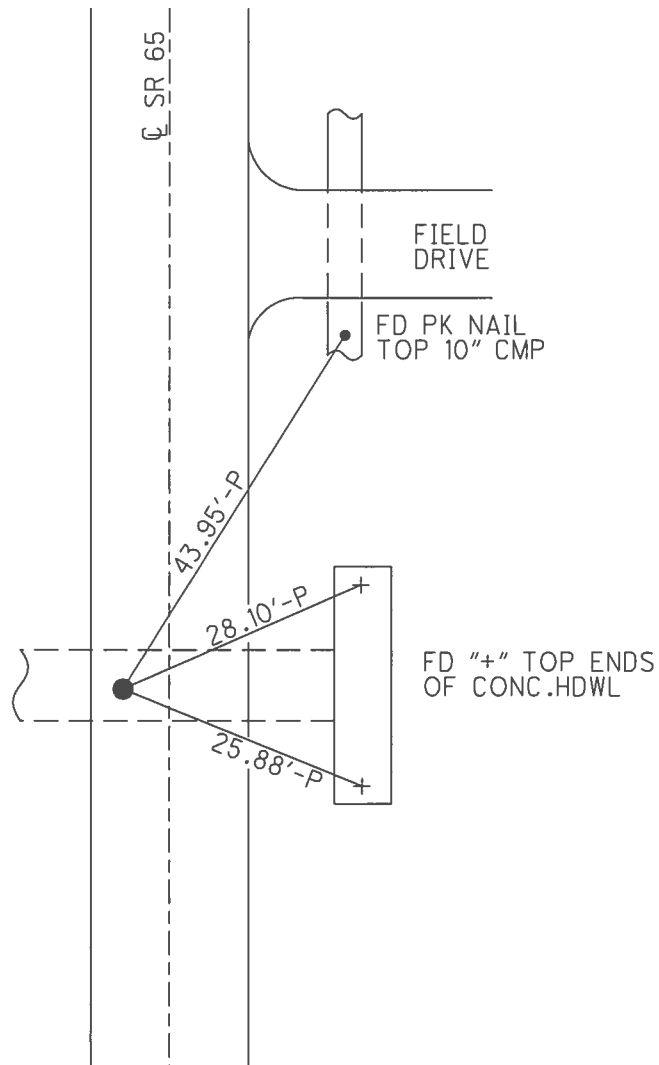
O.D.O.T. DISTRICT 2 SURVEY OFFICE (USE ONLY)

PERSONNEL	REFERENCE NO.	<u>6</u>	SHEET	<u>7</u>	OF	<u>42</u>
NOTES	<u>BROWN</u>	DATE	<u>09-09-02</u>	ROUTE	<u>SR 65</u>	
H.C.	<u>HOMAN</u>	WEATHER	<u>SUNNY</u>	COUNTY	<u>HENRY</u>	
R.C.	<u>BROWN</u>	TEMP.	<u>75°</u>	TOWNSHIP	<u>BARTLOW</u>	
				SECTION	<u>21</u>	
				T	<u>3</u>	N
				R	<u>8</u>	E

TYPE MONUMENT PK/WASHER
 ON SURFACE - ~~BELOW~~ ON
 LEFT - ☉ PAV'T - ~~RIGHT~~ 6.8'
3.6' TO LT EDGE PAVEMENT
 S.L.M. 132+92
 GRID: NORTHING: 563276.037 EASTING: 1572480.316



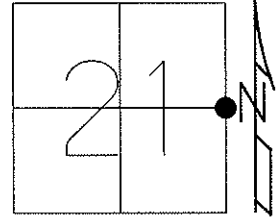
RECORD:
 SET P.K./WASHER
 11/14/02, MB
 FD P.K./WASHER
 7/10/12, MC
 FD P.K./WASHER
 REF6
 5/10/17, JFO
 SET MAG/WASHER
 9/20/17, JFO



O.D.O.T. DISTRICT 2 SURVEY OFFICE (USE ONLY)

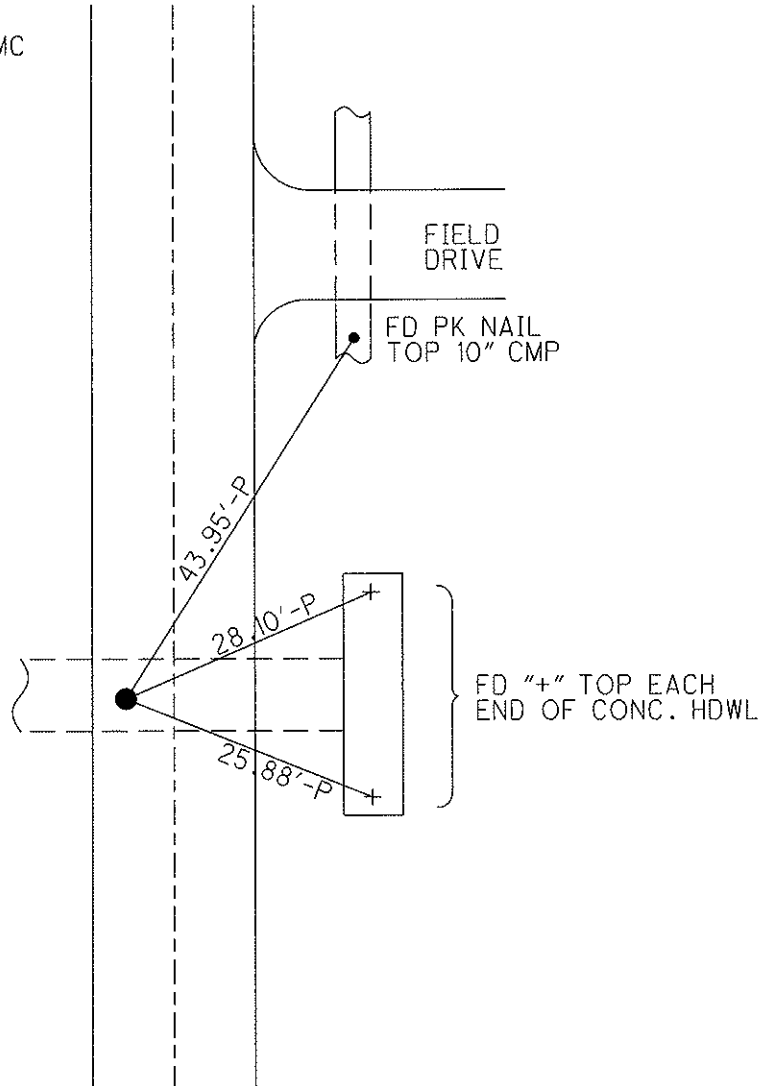
PERSONNEL	REFERENCE NO. <u>6</u>	SHEET <u>7</u> OF <u>42</u>
NOTES	DATE <u>09-09-02</u>	ROUTE <u>SR 65</u>
H.C. <u>BROWN</u>	WEATHER <u>SUNNY</u>	COUNTY <u>HENRY</u>
R.C. <u>HOMAN</u>	TEMP. <u>75°</u>	TOWNSHIP <u>BARTLOW</u>
		SECTION <u>21</u>
		T <u>3</u> N R <u>8</u> E

TYPE MONUMENT _____ PK/WASHER _____
 ON SURFACE - BELOW _____ ON _____
 LEFT - C PAV'T - RIGHT _____ 6.8' _____
3.6' TO LT EDGE PAVEMENT
 S.L.M. _____ 132+92 _____
 Grid: Northing: 563275.992 Easting: 1572480.306



11-14-02 RESET PK/WASHER, MB
 03-14-13 POINT CHIPPED OUT, MC

07-10-12 GPS: REF 6
 03-14-13 GPS: FIN 6, MC



O.D.O.T. DISTRICT 2 SURVEY OFFICE

PERSONNEL

REFERENCE NO. 6

SHEET 6 OF 29

NOTES Brown

H.C. Homan

R.C. Brown

DRAWN - BARNHISEL

DATE 9-9-02

WEATHER SUNNY

TEMP. +75°

ROUTE 65

COUNTY HENRY

TOWNSHIP BARTLOW

SECTION 21

T 3 N R 8 E

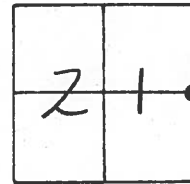
TYPE MONUMENT PK & WASHER

ON SURFACE - BELOW YES

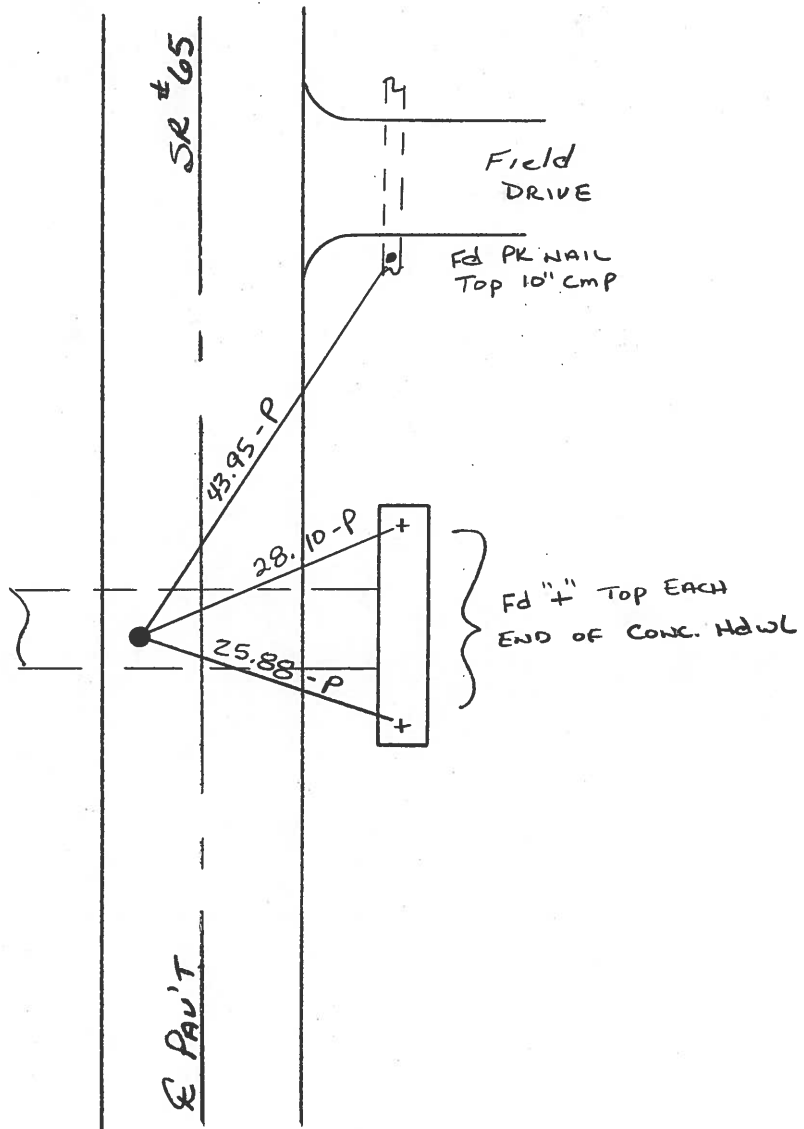
LEFT- & PAV'T. - RIGHT 6.8'

3.6' TO CT EDGE PAVEMENT

S.L.M. 132+92



RESET PK & WASHER
 11-14-02
 MB



O.D.O.T. DISTRICT 2 SURVEY OFFICE

PERSONNEL

REFERENCE NO. 6

SHEET 6 OF 18

NOTES BARNHISEL

H.C. KUZZ

DATE 7-21-93

ROUTE S.R. 65

R.C. BARNHISEL

WEATHER SONNY

COUNTY Henry

OTTO P

TEMP. +75° F

TOWNSHIP Barlow

SECTION 21

T 3 N R 8 E

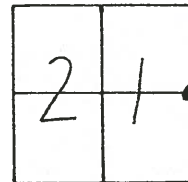
TYPE MONUMENT PK/Washer ✓

ON SURFACE - BELOW YES ✓

LEFT-€ PAV'T. - RIGHT G. 8 ✓

3.6 TO LT. EDGE PAVEMENT

S.L.M. 132+22 ✓

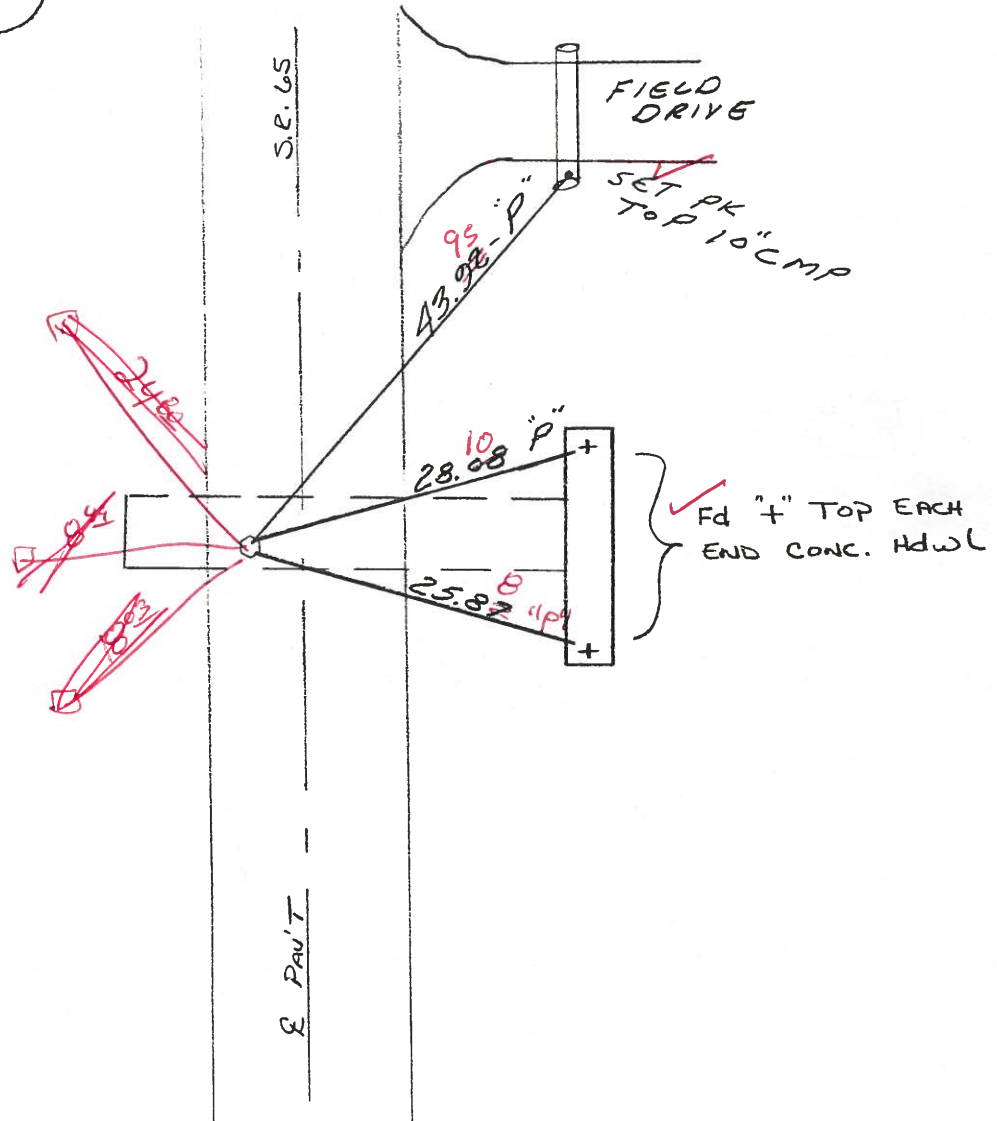


SET PK & WASHER
10-13-93
MB

9-9-08
Sunny +75°
Homan HC
Bourk C

Reset PK/Washer
11-14-02
MB

BS/TAKES



O.D.O.T. DISTRICT 2 SURVEY OFFICE

PERSONNEL

REFERENCE NO. 60

SHEET OF

NOTES Hoffman

H.C. BARNHISEL

R.C. LOEHRKE

DATE 5-5-85

WEATHER Cloudy

TEMP. 70°

ROUTE SR 65

COUNTY HENRY

TOWNSHIP BARTLOW

SECTION 21

T.3 NR 8 E

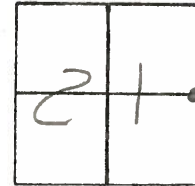
TYPE MONUMENT Small R.R. SPIKE

ON SURFACE - BELOW

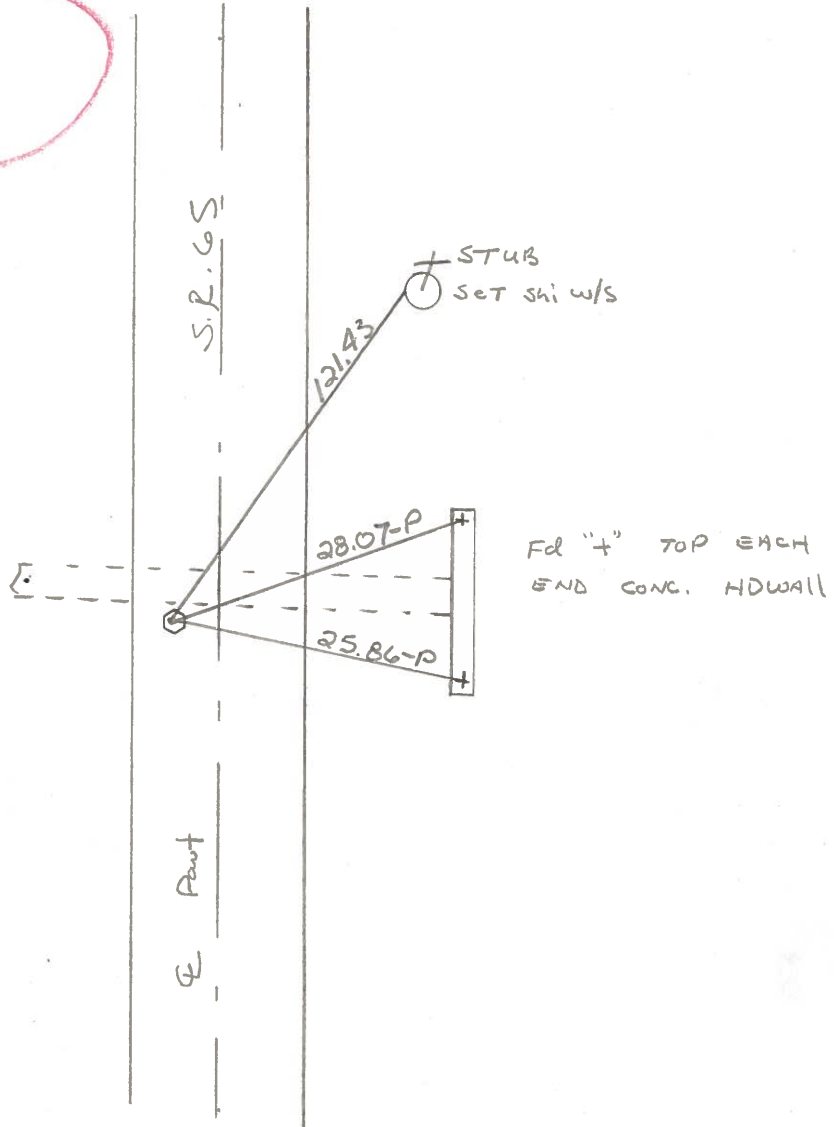
LEFT - 0 PAV'T. - RIGHT 7.0'

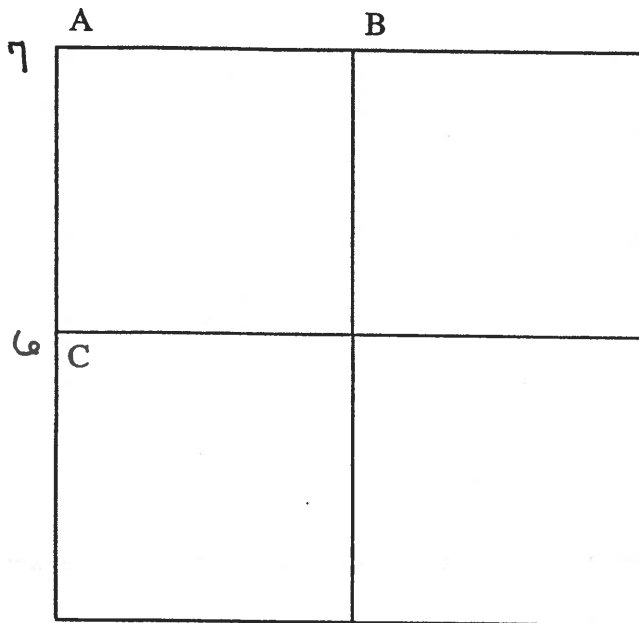
2.8' TO LT EDGE PAVEMENT

S.L.M. 132 + 54



Set PK/Washer
6-27-85
MDR





COUNTY: HENRY

TOWNSHIP: BARTLOW

T- 3 -N R- 8 -E

SECTION: 22

6/23/82 R.W., D.B., J.B.

- A - Found small R.R. spike on surface 8.2' west of centerline pavement.
 23.70' N.W. to S.E. corner bridge rail
 52.93' S.E. to nail/shiner NW/S telephone pole
 22.79' S.W. to N.E. corner bridge rail
 31.29' S.W. to N.W. corner bridge rail
 31.80' N.W. to S.W. corner bridge rail

6/28/82 R.W., J.B.

- B - Found R.R. spike on center of pavement.
 31.98' N.W. to iron pin center of pavement
 67.50' N.E. to duplex SE/S power pole

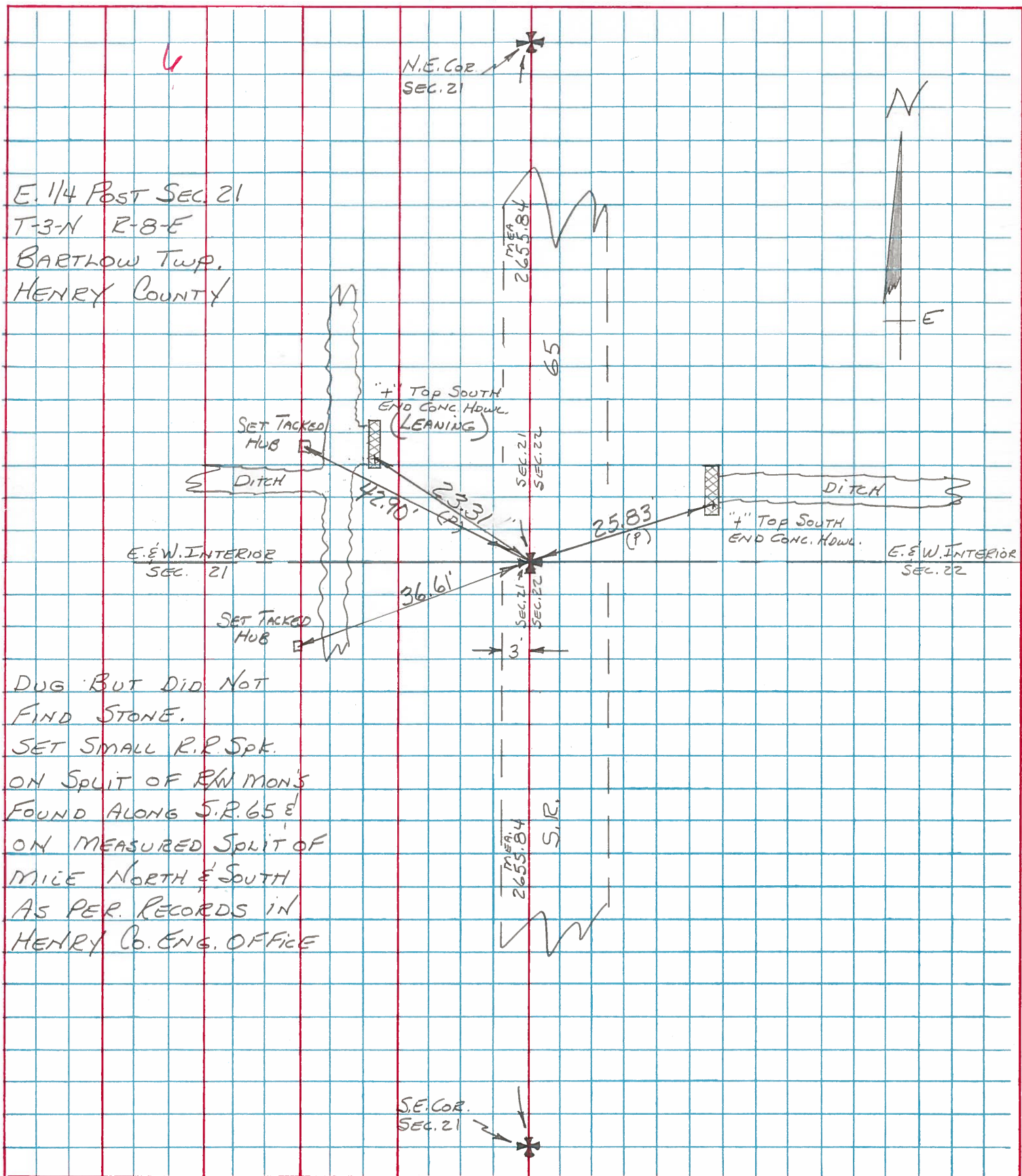
6/23/82 R.W., D.B., J.B.

- C - Found small R.R. spike on surface 7.1' west of centerline pavement.
 43.42' N.W. to 5/8" iron pin on ditch bank
 121.19' N.N.E. to duplex SE/S underground cable marker
 28.05' E.N.E. to "+" N.end conc. headwall (P)
 25.84' E. to "+" south end conc. headwall (P)
 37.07' S.W. to 5/8" iron pin on ditch bank

PERSONNEL TITLE PERSONNEL TITLE
 BURNSIDE _____
 SMITH _____
 BOWERS _____
 MEAD _____

COUNTY HENRY DATE 11-25-74
 S. R. 65 WEATHER CLEARING
 SEC. E 1/4 POST SEC. 21 TEMP. +33°

DESCRIPTION REF. TO SEC. COR. LEFT CENTER LINE RIGHT JOB NO.



DUG BUT DID NOT
 FIND STONE.
 SET SMALL R.R. SPK.
 ON SPLIT OF R/W MON'S
 FOUND ALONG S.R. 65 E
 ON MEASURED SPLIT OF
 MILE NORTH & SOUTH
 AS PER. RECORDS IN
 HENRY CO. ENG. OFFICE