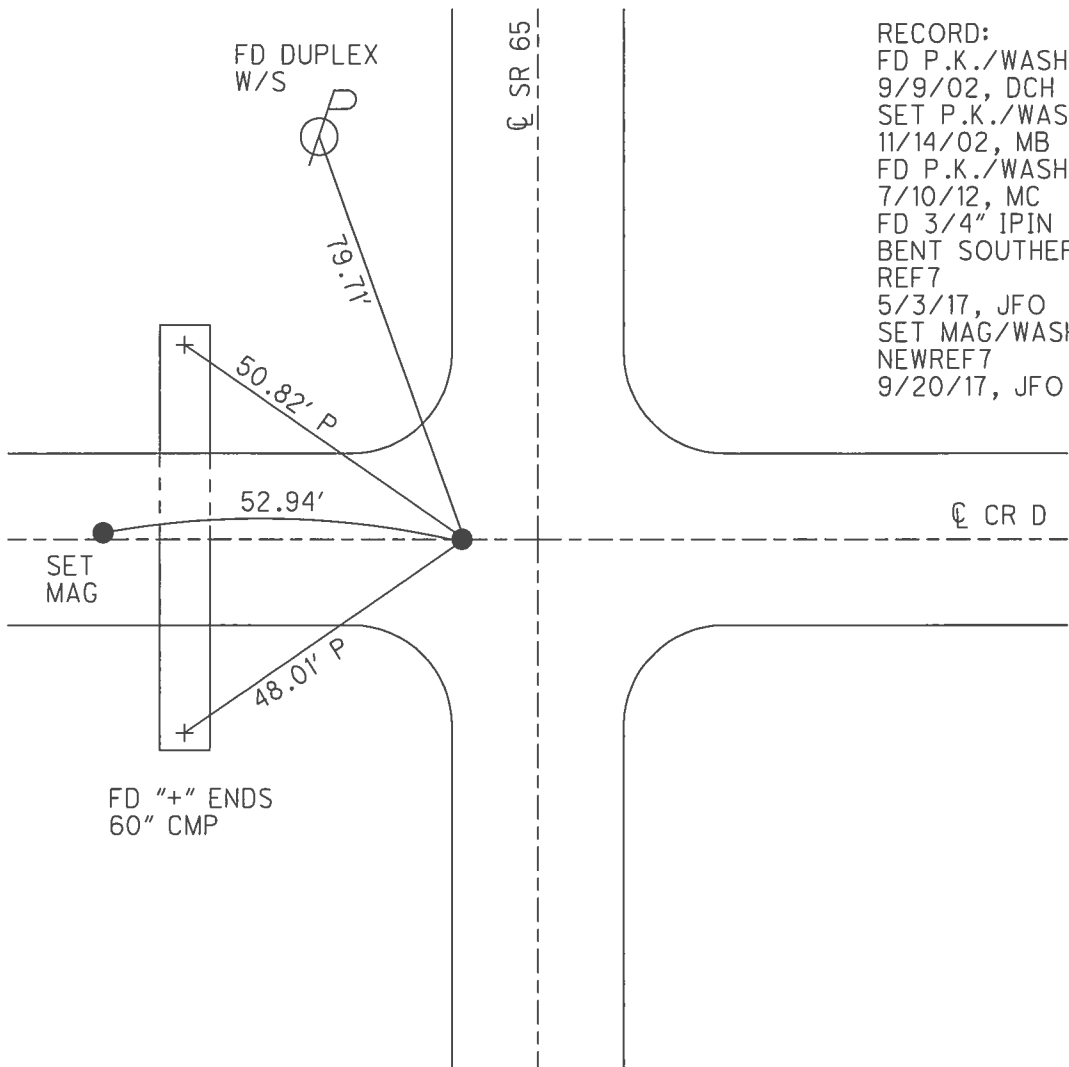
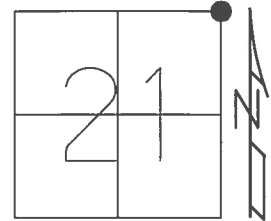


O.D.O.T. DISTRICT 2 SURVEY OFFICE (USE ONLY)

PERSONNEL _____ REFERENCE NO. 7 SHEET 8 OF 42
 NOTES O'DONNELL DATE 9/28/17 ROUTE SR 65
 H.C. O'DONNELL WEATHER SUNNY COUNTY HENRY
 R.C. RHOADES TEMP. 70° TOWNSHIP BARTLOW
 _____ SECTION 21
 _____ T 3 N R 8 E

TYPE MONUMENT MAG/WASHER
 ON SURFACE - ~~BELOW~~ ON _____
 LEFT - CL PAV'T - ~~RIGHT~~ 9.5'
1.5' TO LT EDGE PAVEMENT
 S.L.M. 159+55
 GRID: NORTHING: 565931.648 EASTING: 1572503.484



RECORD:
 FD P.K./WASHER
 9/9/02, DCH
 SET P.K./WASHER
 11/14/02, MB
 FD P.K./WASHER
 7/10/12, MC
 FD 3/4" IPIN
 BENT SOUTHERLY
 REF7
 5/3/17, JFO
 SET MAG/WASHER
 NEWREF7
 9/20/17, JFO

O.D.O.T. DISTRICT 2 SURVEY OFFICE (USE ONLY)

PERSONNEL _____

REFERENCE NO. 7

SHEET 8 OF 42

NOTES BROWN

DATE 09-09-02

ROUTE SR 65

H.C. HOMAN

WEATHER SUNNY

COUNTY HENRY

R.C. BROWN

TEMP. 70°

TOWNSHIP BARTLOW

SECTION 21

T 3 N R 8 E

TYPE MONUMENT _____ PK/WASHER _____

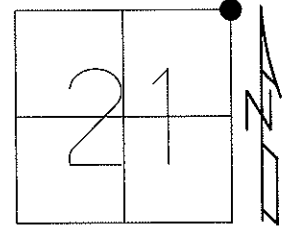
ON SURFACE - BELOW _____ 1.5" _____

LEFT - ϕ PAV'T - RIGHT _____ ON _____

1.5' TO LT EDGE PAVEMENT

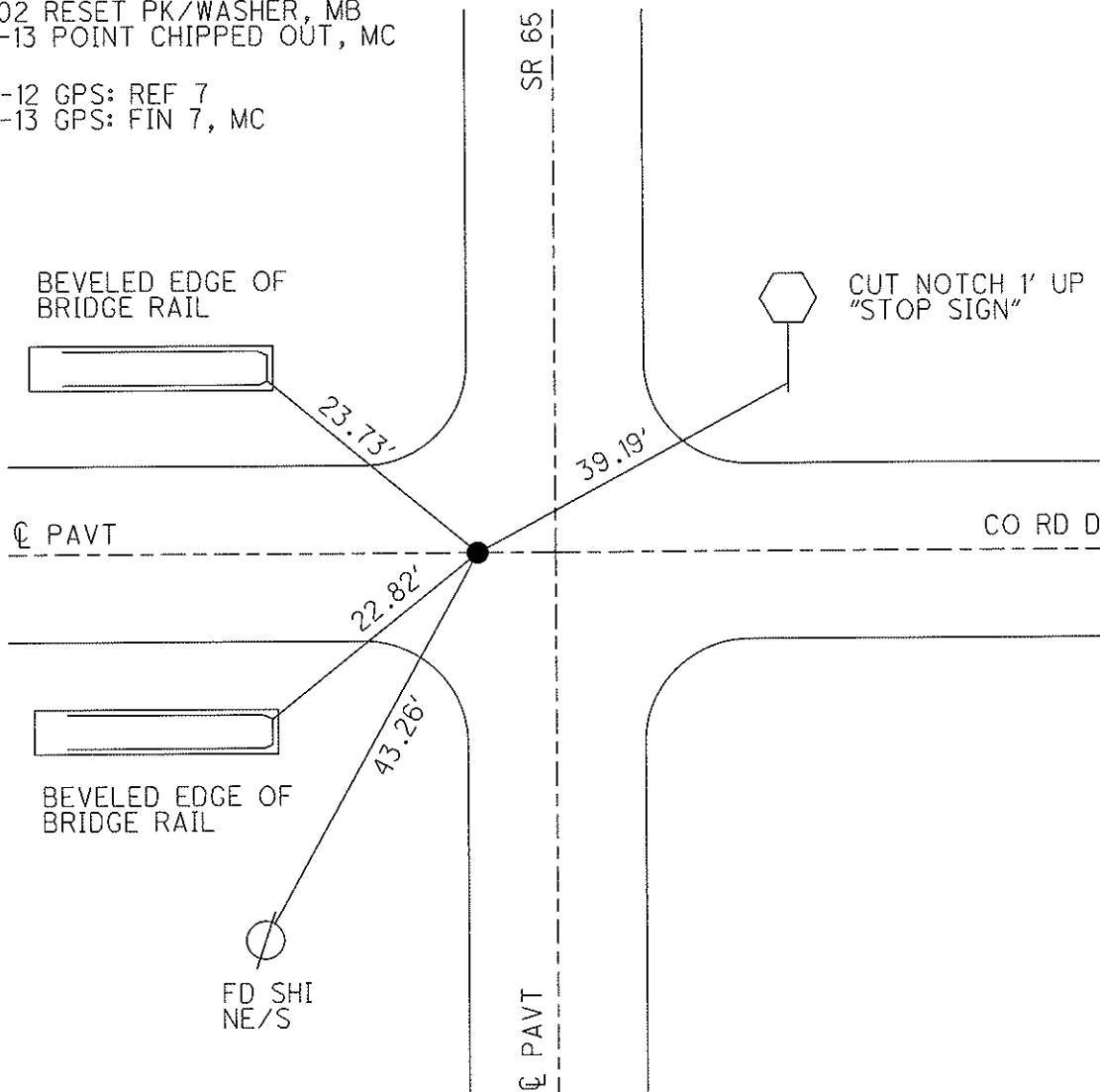
S.L.M. _____ 159+55 _____

Grid: Northing: 565931.667 Easting: 1572503.431



11-14-02 RESET PK/WASHER, MB
03-14-13 POINT CHIPPED OUT, MC

07-10-12 GPS: REF 7
03-14-13 GPS: FIN 7, MC



FD SHI
NE/S

O.D.O.T. DISTRICT 2 SURVEY OFFICE

PERSONNEL

REFERENCE NO. 7

SHEET 7 OF 29

NOTES Brown

H.C. Homan

DATE 9-9-02

ROUTE 65

R.C. Brown

WEATHER SUNNY

COUNTY HENRY

TEMP. +70°

TOWNSHIP BARTLOW

DRAWN - BARNHISEL

SECTION 21

T 3 N R 8 E

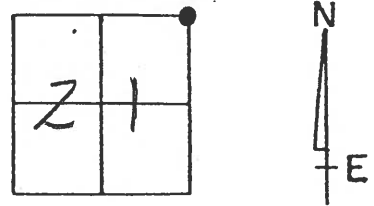
TYPE MONUMENT PK & Washer

~~ON SURFACE~~ - BELOW 1.5"

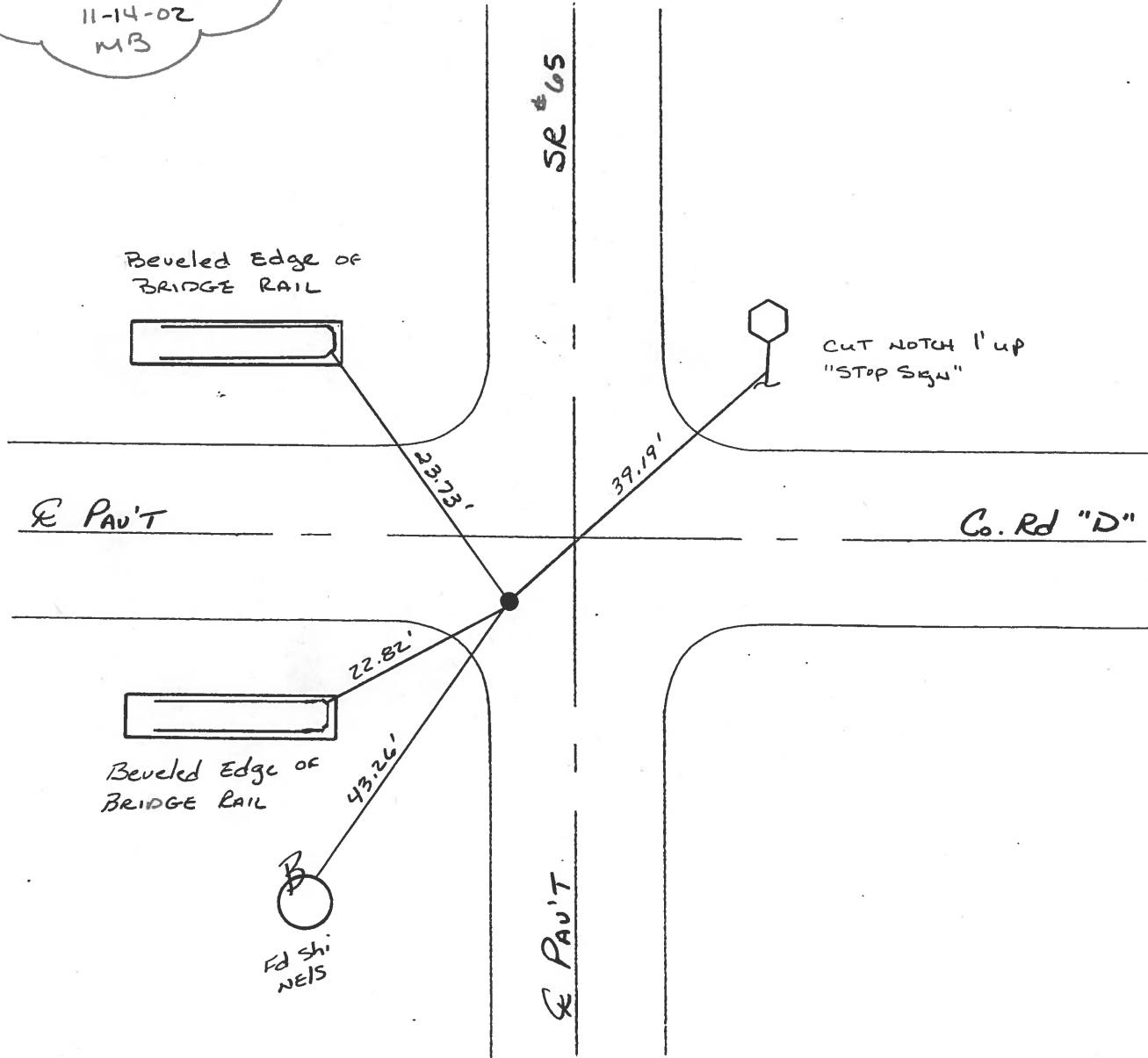
LEFT- & PAV'T. - RIGHT 8.2'

1.5' TO LT EDGE PAVEMENT

S.L.M. 159+55



Reset PK & Washer
11-14-02
MB



SR #65

← E PAV'T

Co. Rd "D" →

← E PAV'T

B
Fd shi
NEIS

O.D.O.T. DISTRICT 2 SURVEY OFFICE

PERSONNEL

REFERENCE NO. 7

SHEET 7 OF 18

NOTES BARNHISEL

H.C. KUSZ

DATE 7-21-93

ROUTE S.R. 65

R.C. BARNHISEL

WEATHER SUNNY

COUNTY Henry

OTTO P

TEMP. +75° F

TOWNSHIP Bartlow

SECTION 21

T3 NR 8 E

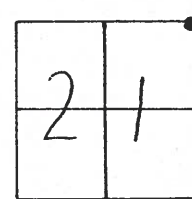
TYPE MONUMENT P.K. + WASHER

ON SURFACE - ~~BELOW~~ YES below 1 1/2"

LEFT-~~☉~~ PAW'T. - ~~RIGHT~~ 8.2 ✓

1.5 TO LT. EDGE PAVEMENT

S.L.M. 159+55 ✓



SET PK & WASHER
10-13-93
MB

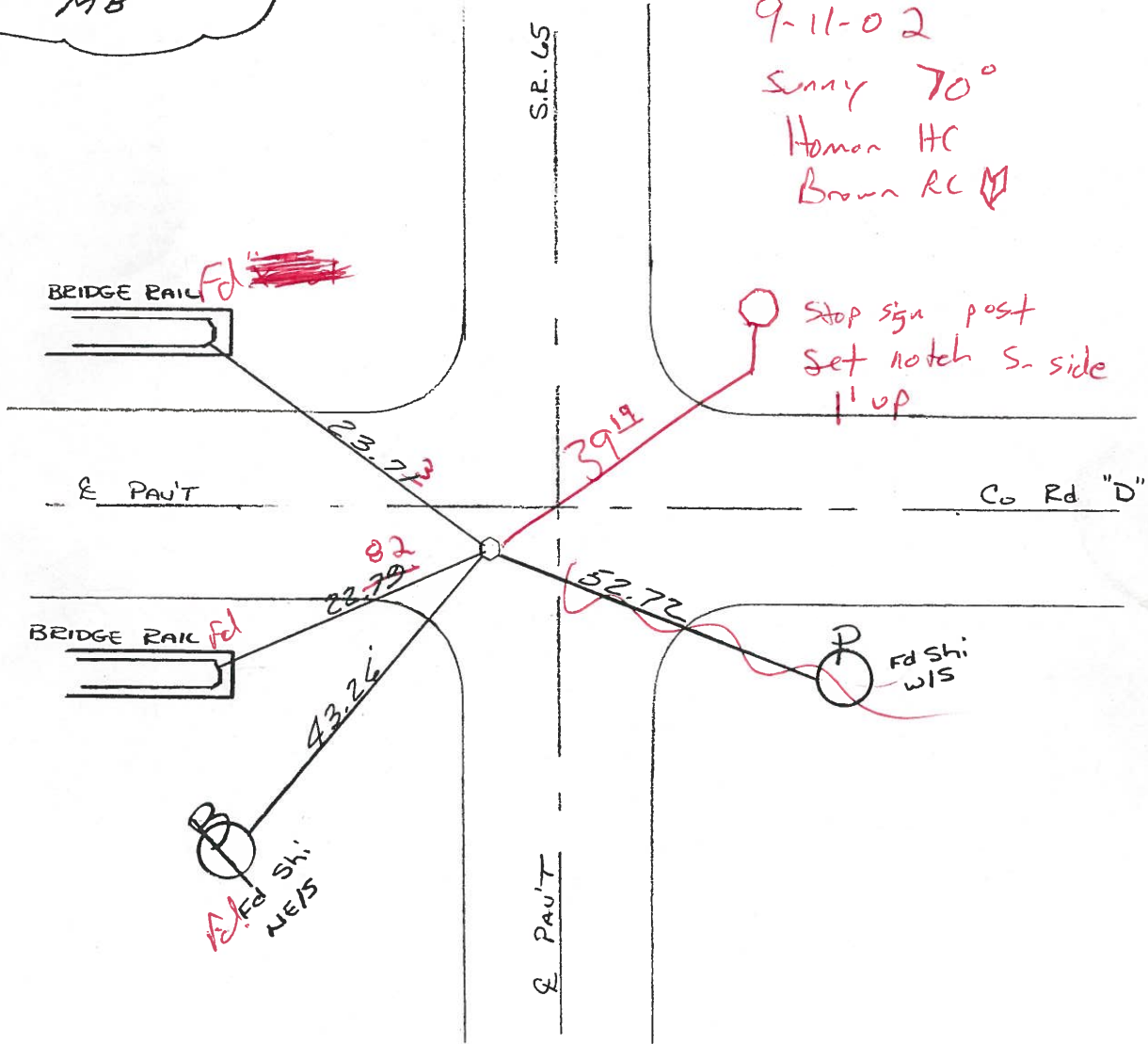
Fd PK 1 1/2" dwn

9-11-02

Sunny 70°

Homan HC

Brown RC



O.D.O.T. DISTRICT 2 SURVEY OFFICE

PERSONNEL

REFERENCE NO. 7

SHEET OF

NOTES Hoffman

H.C. BARNHISEL

R.C. LOEHRKE

DATE 5-15-85

WEATHER Cloudy

TEMP. 70°

ROUTE SR 65

COUNTY HENRY

TOWNSHIP BARTLOW

SECTION 21

T 3 N R 8 E

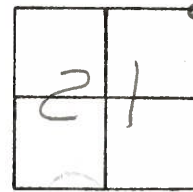
TYPE MONUMENT small RR SPIKE

ON SURFACE - BELOW -

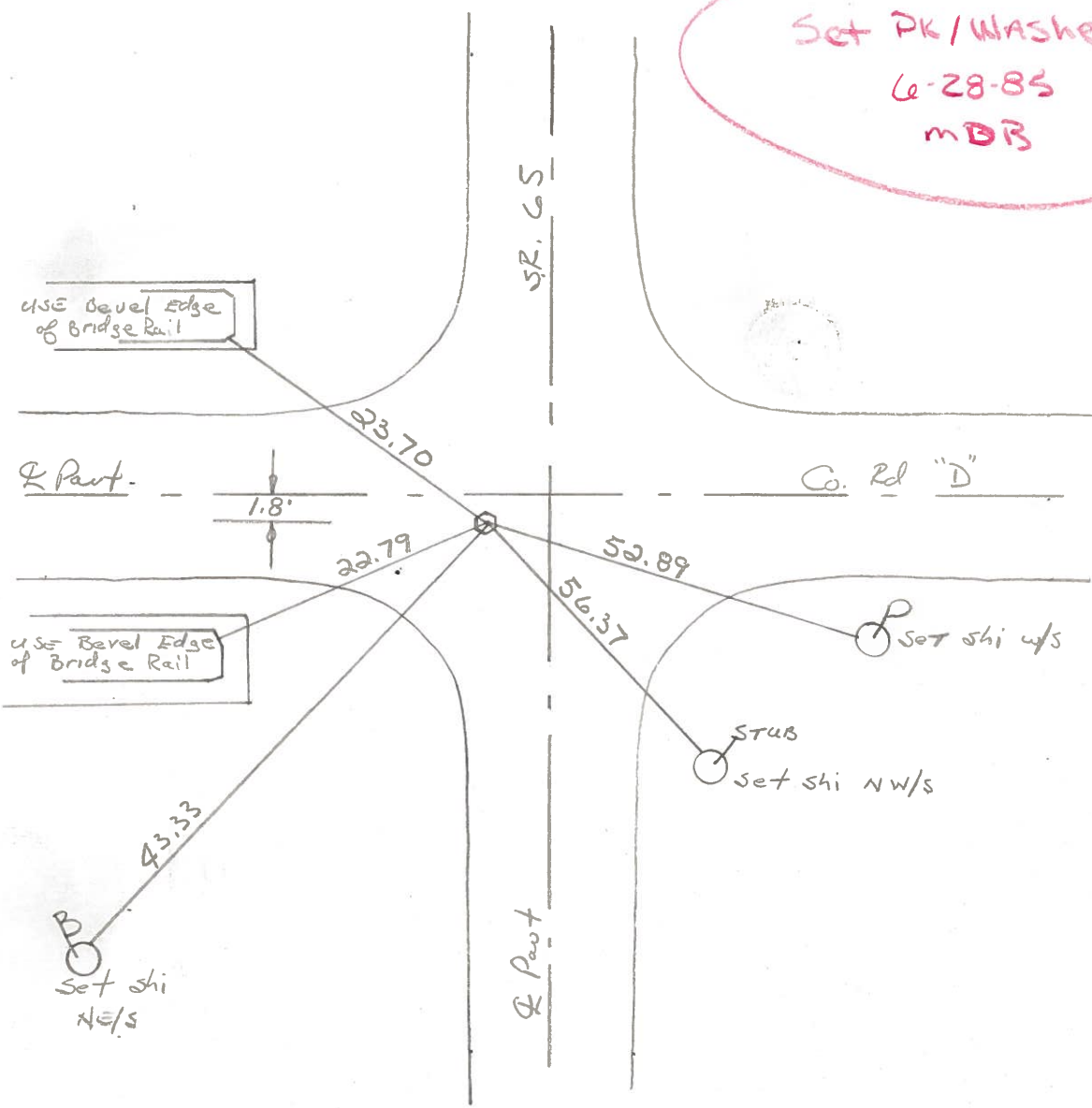
LEFT-& PAV'T. - RIGHT 8.7'

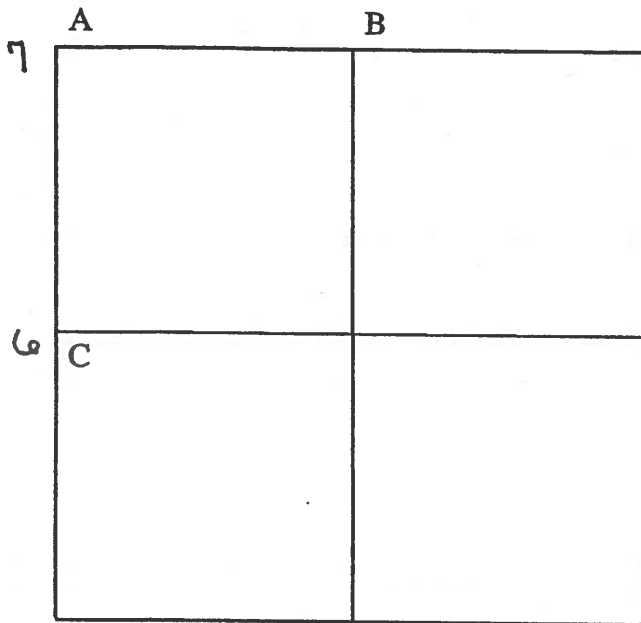
- TO - EDGE PAVEMENT

S.L.M. 159 + 08



Set PK/WASHER
 6-28-85
 mDB





COUNTY: HENRY

TOWNSHIP: BARTLOW

T-3 -N R- 8 -E

SECTION: 22

6/23/82 R.W., D.B., J.B.
 A - Found small R.R. spike on surface 8.2' west of centerline pavement.
 7 23.70' N.W. to S.E. corner bridge rail
 52.93' S.E. to nail/shiner NW/S telephone pole
 22.79' S.W. to N.E. corner bridge rail
 31.29' S.W. to N.W. corner bridge rail
 31.80' N.W. to S.W. corner bridge rail

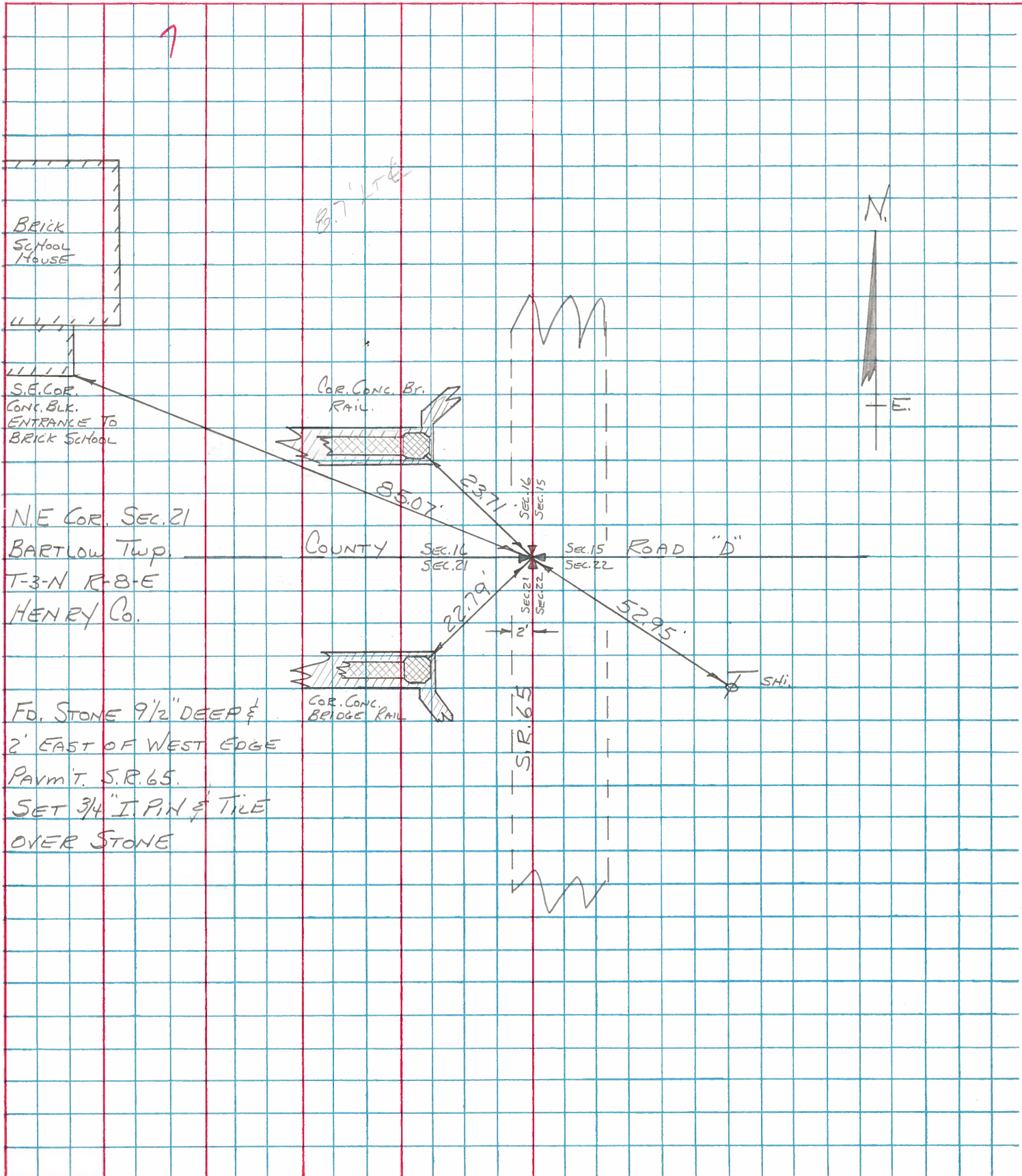
6/28/82 R.W., J.B.
 B - Found R.R. spike on center of pavement.
 31.98' N.W. to iron pin center of pavement
 67.50' N.E. to duplex SE/S power pole

6/23/82 R.W., D.B., J.B.
 C - Found small R.R. spike on surface 7.1' west of centerline pavement.
 6 43.42' N.W. to 5/8" iron pin on ditch bank
 121.19' N.N.E. to duplex SE/S underground cable marker
 28.05' E.N.E. to "+" N.end conc. headwall (P)
 25.84' E. to "+" south end conc. headwall (P)
 37.07' S.W. to 5/8" iron pin on ditch bank

PERSONNEL	TITLE	PERSONNEL	TITLE
BURNSIDE			
SMITH			
BOWERS			
MEAD			

COUNTY HENRY DATE 10-24-74
 S. R. 65 WEATHER PT. CLOUDY
 SEC. 21 BARTLOW Twp TEMP. 55°

DESCRIPTION LOCATE SECTION CORNER JOB NO. _____
 LEFT CENTER LINE RIGHT



N.E. COR. SEC. 21
 BARTLOW TWP.
 T-3-N R-8-E
 HENRY Co.

FD. STONE 9 1/2" DEEP & 2' EAST OF WEST EDGE
 PAVM'T. S.R. 65.
 SET 3/4" I.P.H. & TILE OVER STONE