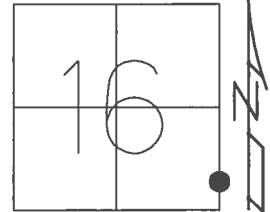


O.D.O.T. DISTRICT 2 SURVEY OFFICE (USE ONLY)

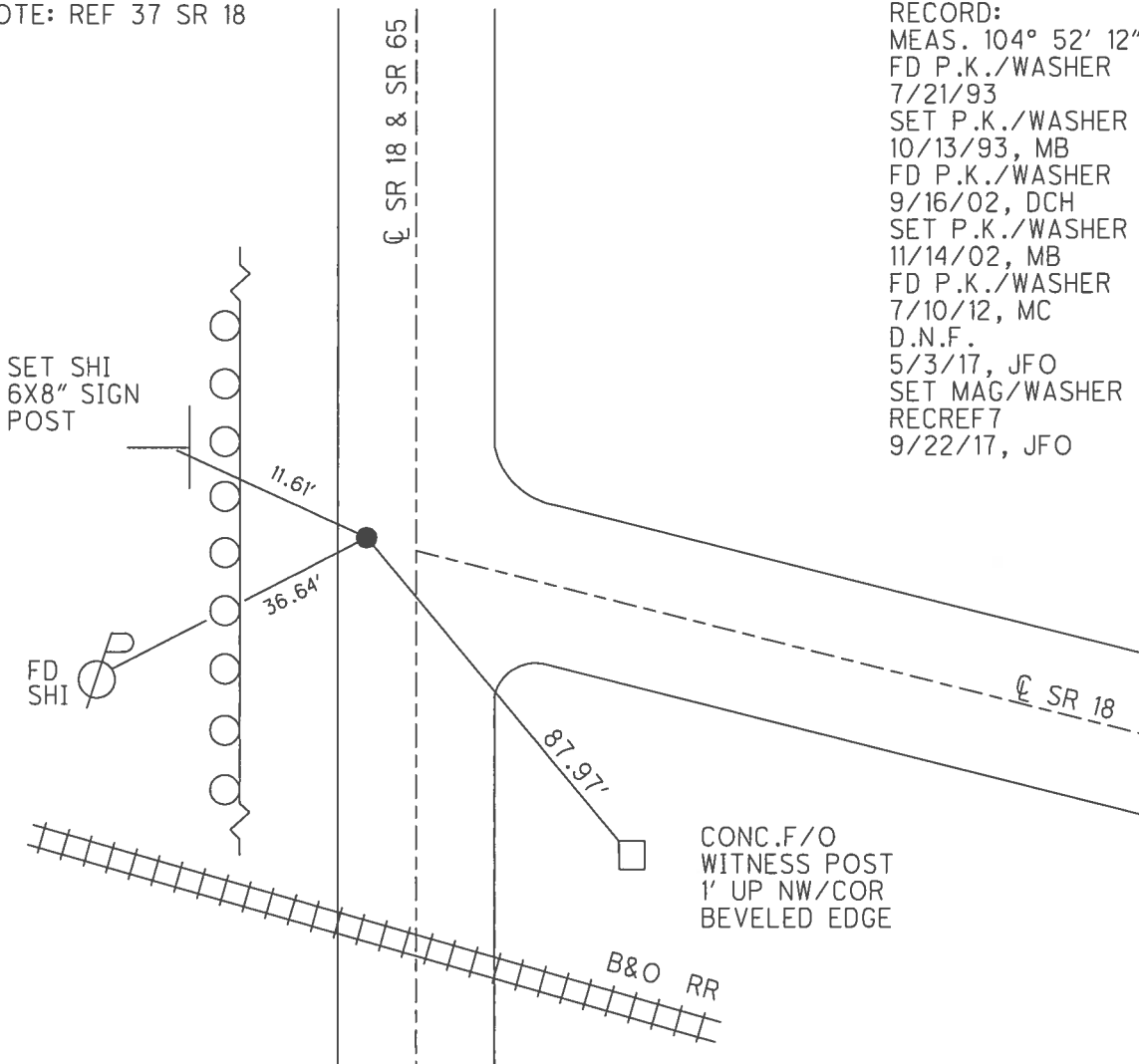
PERSONNEL	REFERENCE NO.	<u>7 A</u>	SHEET	<u>9</u>	OF	<u>42</u>
NOTES	<u>RHOADES</u>	DATE	<u>9/22/17</u>	ROUTE	<u>SR 65</u>	
H.C.	<u>O'DONNELL</u>	WEATHER	<u>FAIR</u>	COUNTY	<u>HENRY</u>	
R.C.	<u>RHOADES</u>	TEMP.	<u>70°</u>	TOWNSHIP	<u>BARTLOW</u>	
				SECTION	<u>16</u>	
				<u>T 3 N</u>	<u>R 8 E</u>	

TYPE MONUMENT MAG/WASHER
 ON SURFACE - ~~BELOW~~ ON _____
 LEFT - ☉ PAV'T - ~~RIGHT~~ 8.6', 0.7' N OF ☉ SR 18
1.6' TO LT EDGE PAVEMENT
 S.L.M. 164+65



GRID: NORTHING: 566529.641 EASTING: 1572505.884

NOTE: REF 37 SR 18



RECORD:
 MEAS. 104° 52' 12"
 FD P.K./WASHER
 7/21/93
 SET P.K./WASHER
 10/13/93, MB
 FD P.K./WASHER
 9/16/02, DCH
 SET P.K./WASHER
 11/14/02, MB
 FD P.K./WASHER
 7/10/12, MC
 D.N.F.
 5/3/17, JFO
 SET MAG/WASHER
 RECREF 7
 9/22/17, JFO

O.D.O.T. DISTRICT 2 SURVEY OFFICE (USE ONLY)

PERSONNEL

REFERENCE NO. 7-A

SHEET 9 OF 42

NOTES BARNHESEL

DATE 09-16-02

ROUTE SR 65

H.C. CANTERBURY

WEATHER SUNNY

COUNTY HENRY

R.C. BARNHESEL

TEMP. 70°

TOWNSHIP BARTLOW

SECTION 16

T 3 N R 8 E

TYPE MONUMENT PK/WASHER

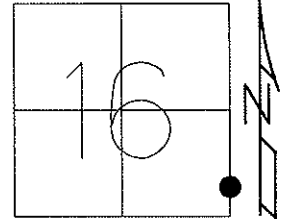
ON SURFACE - BELOW ON

LEFT - ☉ PAV'T - RIGHT 8.6'

1.6' TO LT EDGE PAVEMENT 0.7' N OF ☉ SR 18

S.L.M. 164+65 SR 65/ 920+56 SR 18

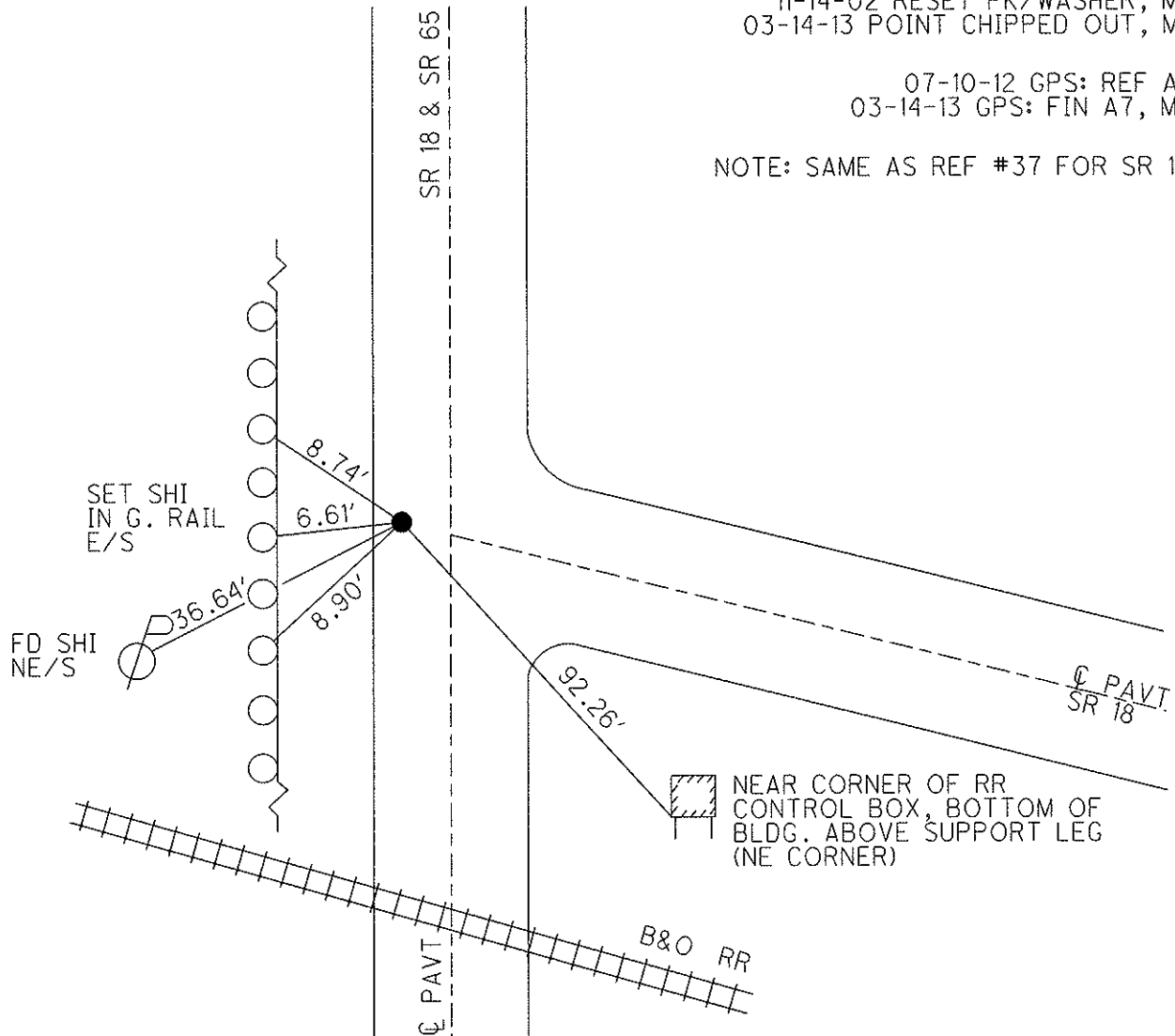
Grid: Northing: 566529.641 Easting: 1572505.884



11-14-02 RESET PK/WASHER, MB
03-14-13 POINT CHIPPED OUT, MC

07-10-12 GPS: REF A7
03-14-13 GPS: FIN A7, MC

NOTE: SAME AS REF #37 FOR SR 18



O.D.O.T. DISTRICT 2 SURVEY OFFICE

SR 18 = #37

PERSONNEL _____

REFERENCE NO. 7-A

SHEET 8 OF 29

NOTES BARNHISEL AC

H.C. CANTERBURY

DATE 9-16-02

ROUTE 65

R.C. _____

WEATHER SUNNY

COUNTY HENRY

TEMP. +70°

TOWNSHIP BARTLOW

SECTION 16

T 3 N R 8 E

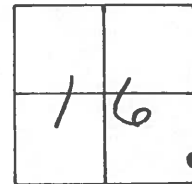
TYPE MONUMENT PK & Washer

ON SURFACE - BELOW YES

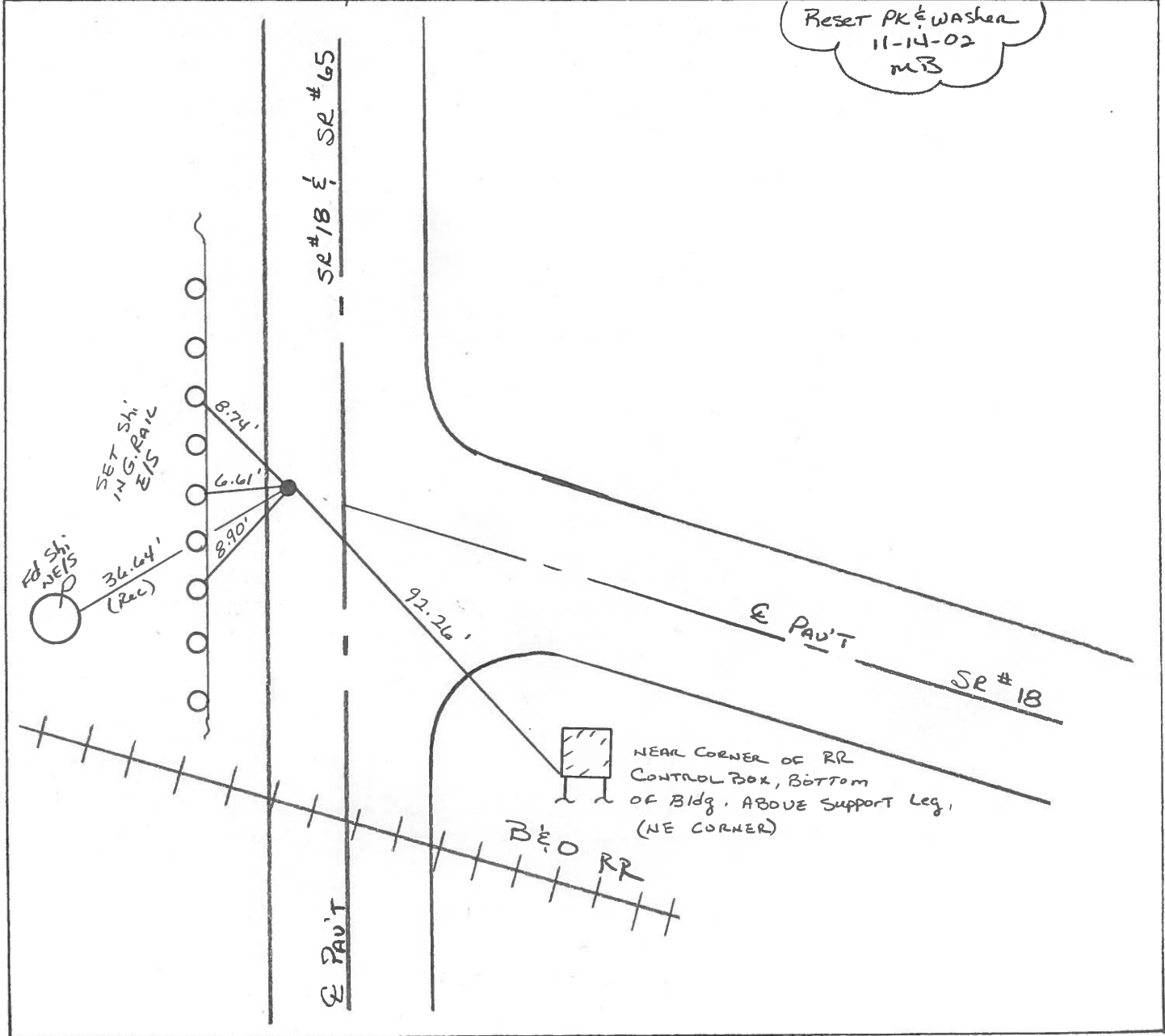
LEFT- & PART - RIGHT 8.6

1.6' TO LT EDGE PAVEMENT 0.7' N. OF E SR 18

S.L.M. 164+65 SR 65 / 920+56 SR 18



Reset PK & Washer
11-14-02
MB



O.D.O.T. DISTRICT 2 SURVEY OFFICE

S.R. 65 #7-A

PERSONNEL

REFERENCE NO. SR 18 #37 SHEET 8 OF 18

NOTES BARNHISEL ✓

9-16-02

H.C. KUSZ MC

DATE 9-21-93

ROUTE SR 18 & 65

R.C. BARNHISEL ✓

WEATHER SUNNY ✓

COUNTY Henry

OTTO P

TEMP. +75° F +70

TOWNSHIP Barlow

SECTION 15

T3 N R 8 E

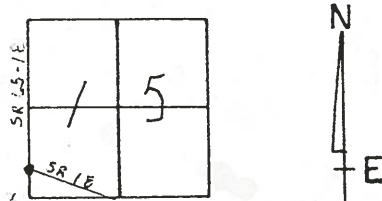
TYPE MONUMENT P.K. Nail + Washer ✓

ON SURFACE - BELOW YES ✓

LEFT- & PAV'T. - RIGHT 8.6 ON SR 65

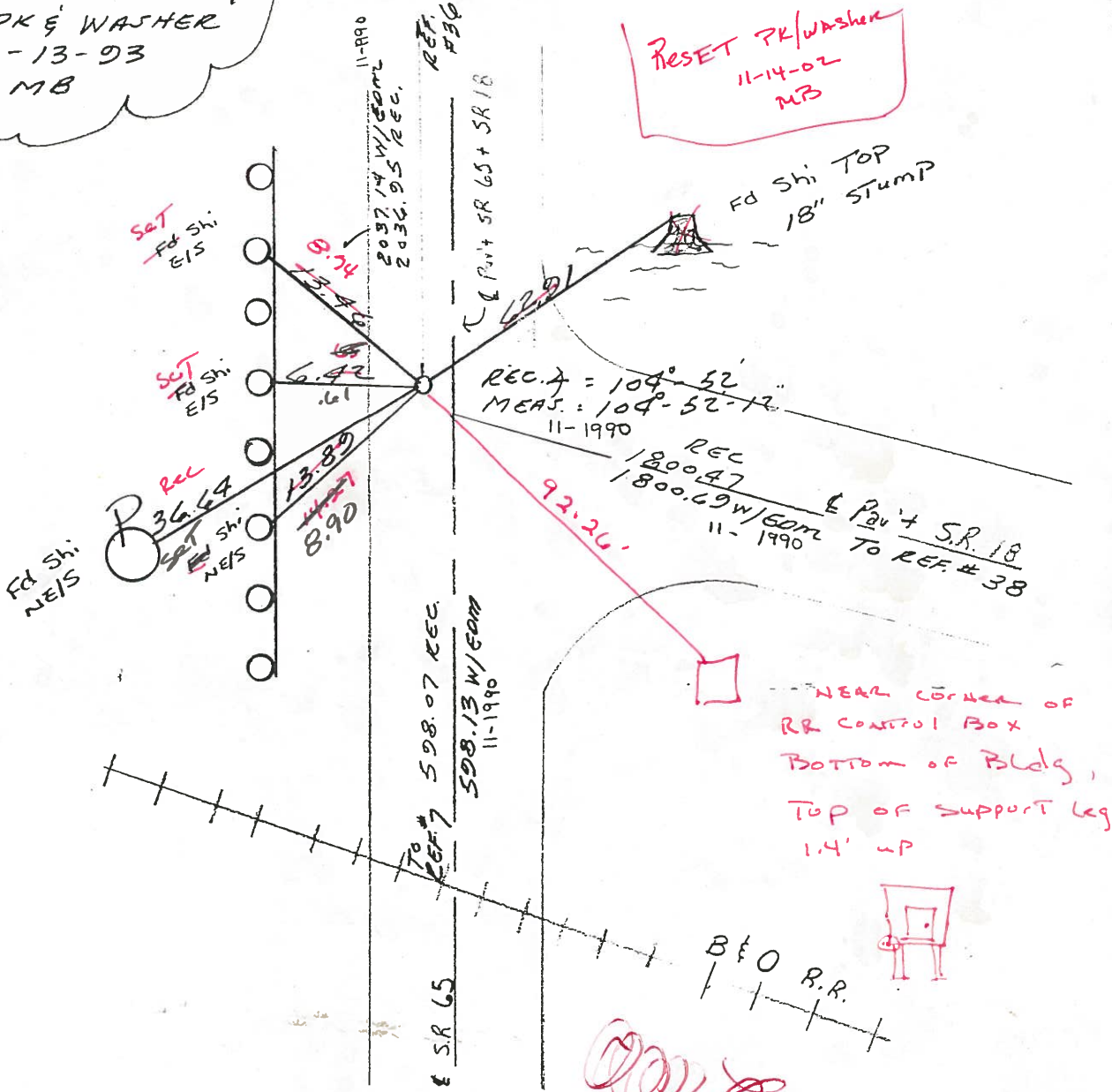
1.6 TO LT. EDGE PAVEMENT ON SR 65

S.L.M. 165+70 SR 65 / 920+56 SR 18



SET PK & WASHER
10-13-93
MB

RESET PK/WASHER
11-14-02
MB



O.D.O.T. DISTRICT 2 SURVEY OFFICE

PERSONNEL _____

REFERENCE NO. 37
SR 65 #7-A

SHEET _____ OF _____

NOTES Hoffman

H.C. BARNHISEL

R.C. _____

DATE 11-13-90

WEATHER P CLEAR

TEMP. 40°

ROUTE SR 18 F 65

COUNTY HENRI

TOWNSHIP BARTLOW

SECTION _____

T _____ R _____

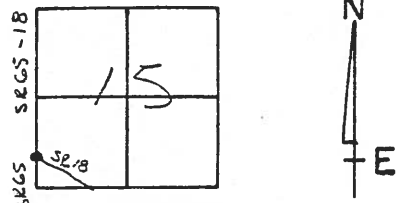
TYPE MONUMENT Set Pk/washer

ON SURFACE - BELOW yes

LEFT - PAV'T. - RIGHT 7.6 ON SR 65

1.6 TO Lt. EDGE PAVEMENT ON SR 65 0.7' N of E 18 E

S.L.M. 165+07 SR 65 / 921+85 SR 18



Reset Pk Nail & washer at
INTERSECTION FROM NOTES
BY "STONE" ON 26 AUG 74.

