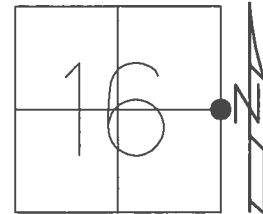


O.D.O.T. DISTRICT 2 SURVEY OFFICE (USE ONLY)

PERSONNEL	REFERENCE NO.	<u>8</u>	SHEET	<u>10</u>	OF	<u>42</u>
NOTES	<u>RHOADES</u>	DATE	<u>5/3/17</u>	ROUTE	<u>SR 65</u>	
H.C.	<u>O'DONNELL</u>	WEATHER	<u>CLOUDY</u>	COUNTY	<u>HENRY</u>	
R.C.	<u>HELDMAN</u>	TEMP.	<u>52°</u>	TOWNSHIP	<u>BARTLOW</u>	
				SECTION	<u>16</u>	
				T	<u>3</u>	N
				R	<u>8</u>	E

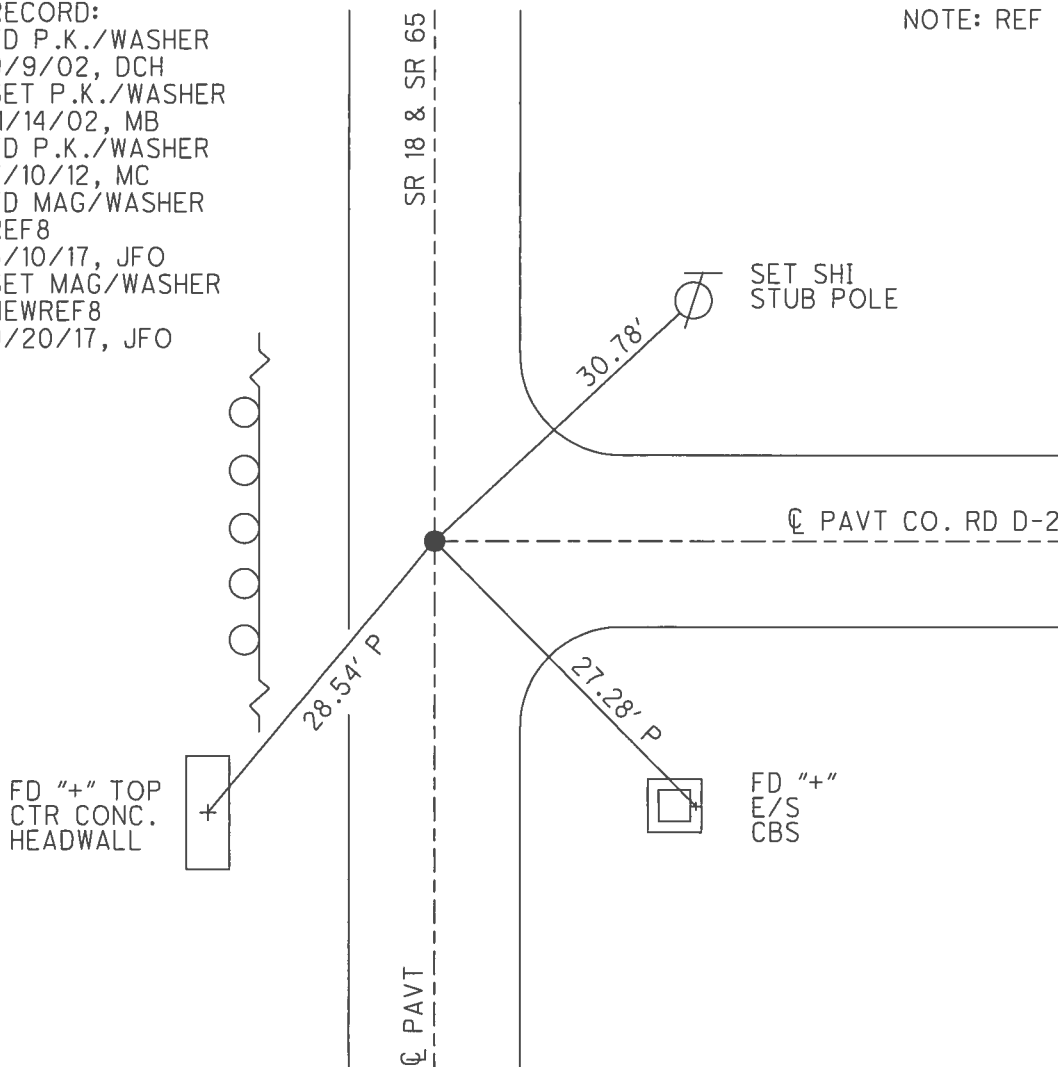
TYPE MONUMENT MAG/WASHER
 ON SURFACE - ~~BELOW~~ ON
~~LEFT~~ - ☉ PAV'T - RIGHT 0.3'
9.4' TO LT. EDGE PAVEMENT
 S.L.M. 184+90



GRID: NORTHING: 568566.514 EASTING: 1572515.193

RECORD:
 FD P.K./WASHER
 9/9/02, DCH
 SET P.K./WASHER
 11/14/02, MB
 FD P.K./WASHER
 7/10/12, MC
 FD MAG/WASHER
 REF8
 5/10/17, JFO
 SET MAG/WASHER
 NEWREF8
 9/20/17, JFO

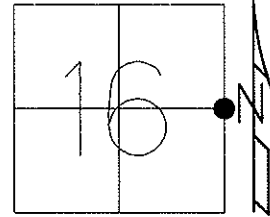
NOTE: REF 36 SR 18



O.D.O.T. DISTRICT 2 SURVEY OFFICE (USE ONLY)

PERSONNEL	REFERENCE NO. <u>8</u>	SHEET <u>10</u> OF <u>42</u>
NOTES <u>BARNHEISEL</u>	DATE <u>09-16-02</u>	ROUTE <u>SR 65</u>
H.C. <u>CANTERBURY</u>	WEATHER <u>SUNNY</u>	COUNTY <u>HENRY</u>
R.C. <u>BARNHEISEL</u>	TEMP. <u>70°</u>	TOWNSHIP <u>BARTLOW</u>
		SECTION <u>16</u>
		T <u>3</u> N R <u>8</u> E

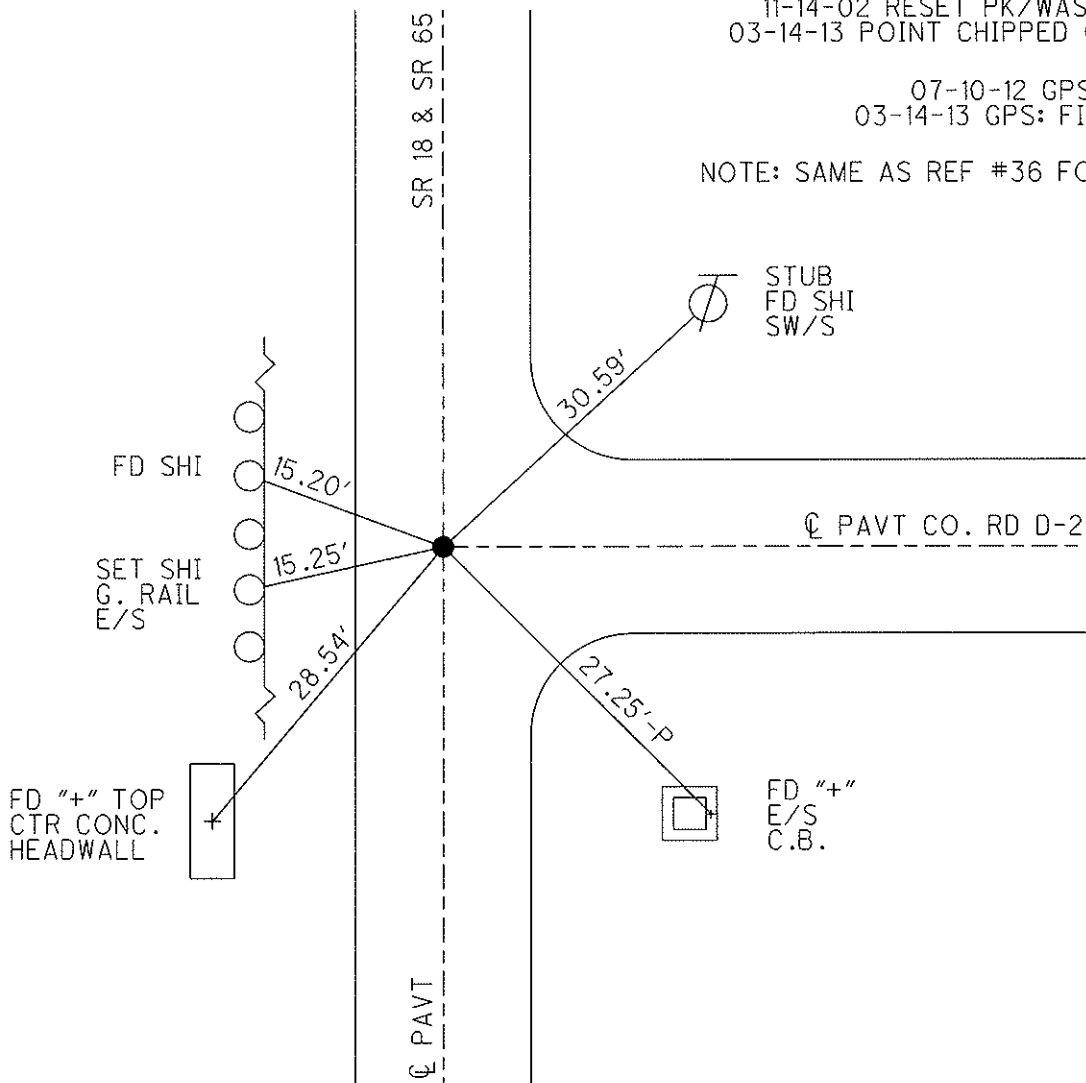
TYPE MONUMENT _____ PK/WASHER _____
 ON SURFACE - BELOW _____ ON _____
 LEFT - ϕ PAV'T - RIGHT _____ ON _____
9.4' TO LT EDGE PAVEMENT
 S.L.M. 184+90 SR 65 / 900+20 SR 18
 Grid: Northing: 568566.677 Easting: 1572515.159



11-14-02 RESET PK/WASHER, MB
 03-14-13 POINT CHIPPED OUT, MC

07-10-12 GPS: REF 8
 03-14-13 GPS: FIN 8, MC

NOTE: SAME AS REF #36 FOR SR 18



O.D.O.T. DISTRICT 2 SURVEY OFFICE

SR #18 = #36

PERSONNEL _____

REFERENCE NO. 8

SHEET 9 OF 29

NOTES BARNHISEL RC

H.C. CANTERBURY

R.C. _____

DATE 9-16-02

WEATHER SUNNY

TEMP. +70°

ROUTE 65

COUNTY HENRY

TOWNSHIP BARTLOW

SECTION 16

T 3 N R 8 E

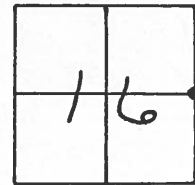
TYPE MONUMENT PK & WASHER

ON SURFACE - BELOW YES

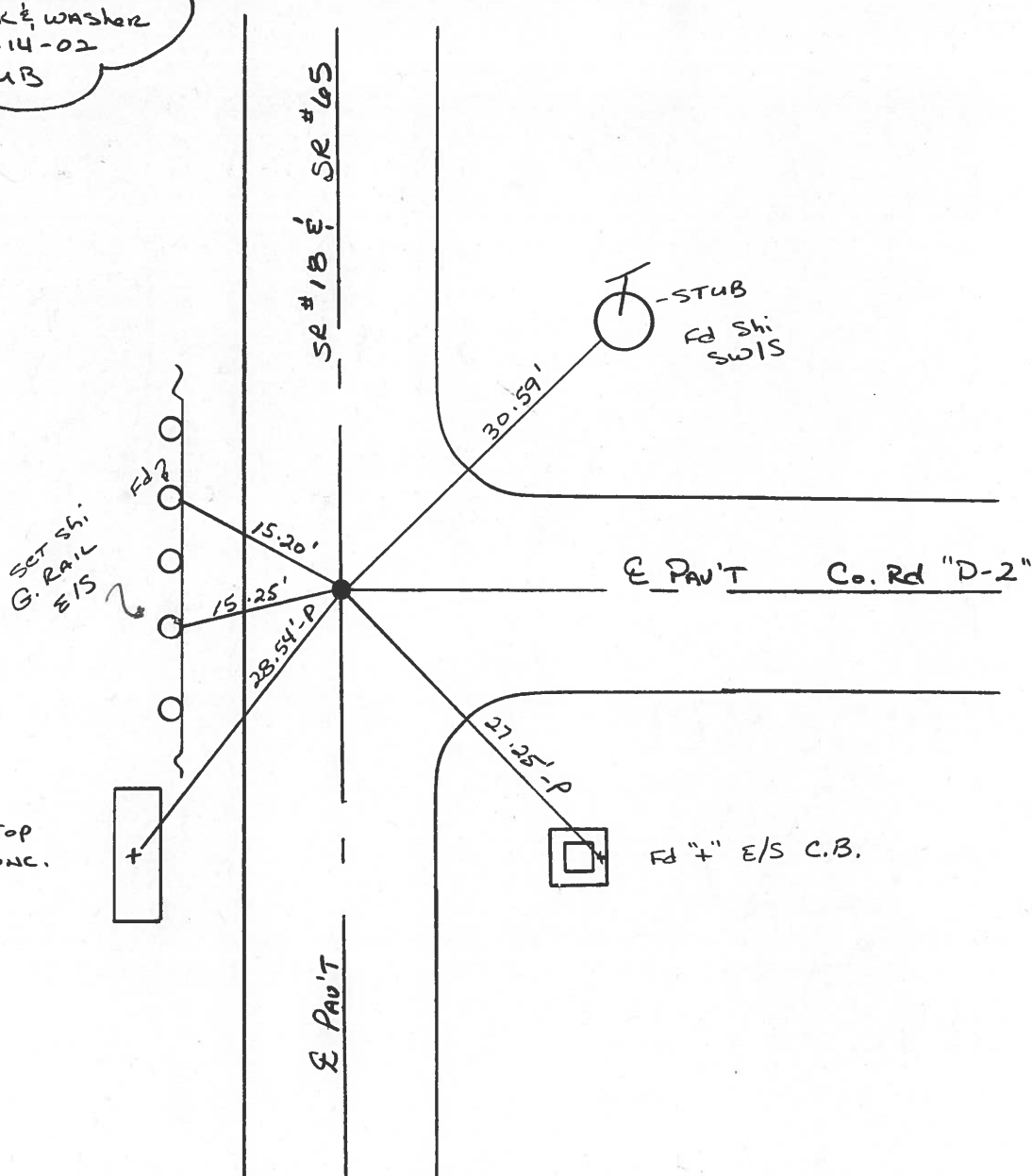
LEFT - PAV'T. - RIGHT YES

9.4' TO LT EDGE PAVEMENT

S.L.M. 184+90 SR 65 / 900+20 SR 18



Reset PK & washer
11-14-02
MB



O.D.O.T. DISTRICT 2 SURVEY OFFICE

PERSONNEL

REFERENCE NO. ^{S.R. 65 = #8} ~~S.R. 18 = #34~~

SHEET 9 OF 18

NOTES BARNHISEL ✓

9-16-02

H.C. KOSZ MC

DATE ~~7-21-93~~

ROUTE S.R. 65

R.C. BARNHISEL ✓

WEATHER SUNNY ✓

COUNTY Henry

~~OTTO~~ P

TEMP. ~~+75° F~~ +70

TOWNSHIP Bartlow

SECTION 16

T.3 N R 8 E

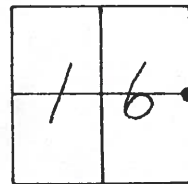
TYPE MONUMENT P.K. + WASHER ✓

ON SURFACE - ~~BELOW~~ YES ✓

LEFT - & PAV'T. - RIGHT YES ✓

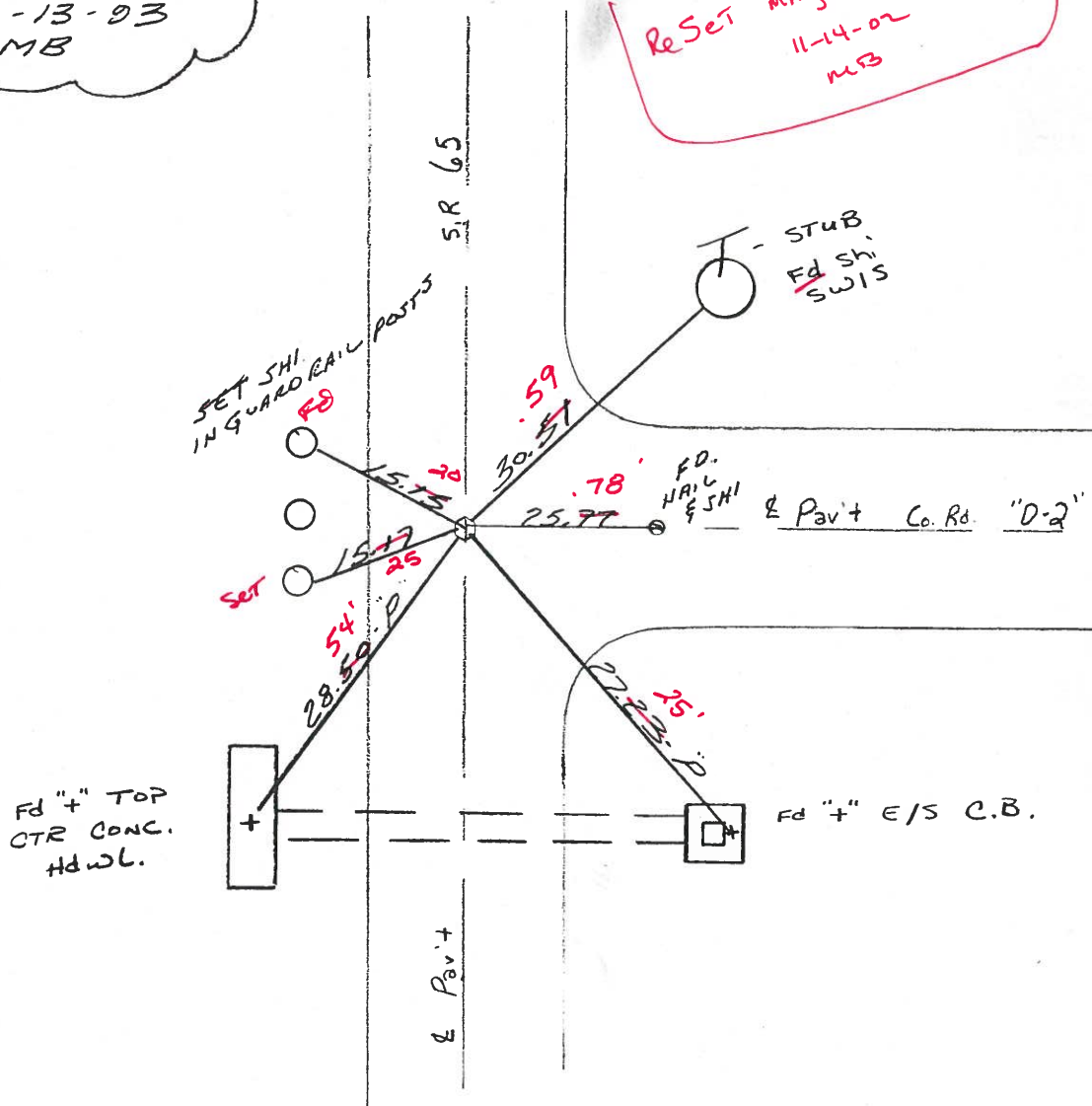
9.4' - 9.8' TO LT. EDGE PAVEMENT 184+90

S.L.M. 900 + 82 (SR 18) ~~185799 (SR 65)~~



SET PK & WASHER
10-13-93
MB

ReSet MAG NAIL / washer
11-14-02
MB



O.D.O.T. DISTRICT 2 SURVEY OFFICE

PERSONNEL _____

REFERENCE NO. 8
#36 ON SR 18

SHEET _____ OF _____

NOTES Hoffman

H.C. BARANISH

R.C. LOCKER

DATE 5-15-85

WEATHER P. Clear

TEMP. 70°

ROUTE SR 65

COUNTY HENRY

TOWNSHIP BARTLOW

SECTION 16

T3 NR 8 E

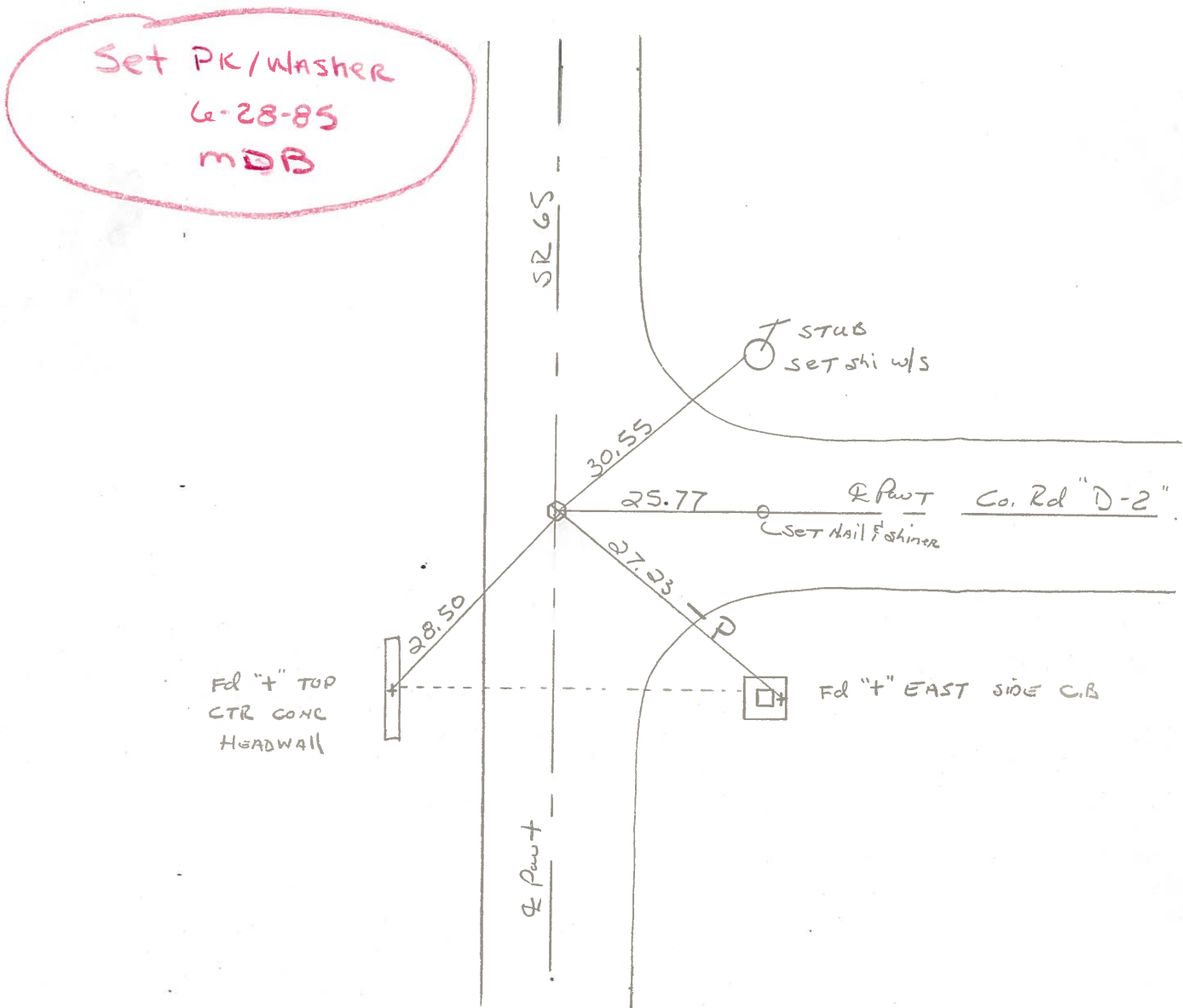
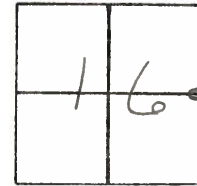
TYPE MONUMENT small RR spike

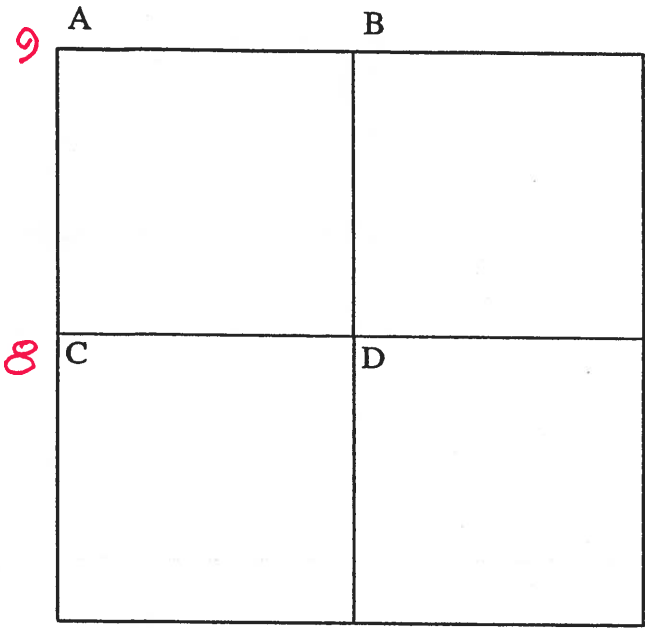
ON SURFACE - BELOW Yes

LEFT- & PAW'T. - RIGHT ON

9.2' TO LT. EDGE PAVEMENT

S.L.M. 185+44 (SR 18 = 901+48)





COUNTY: HENRY

TOWNSHIP: BARTLOW

T-3-N R-8-E

SECTION: 15

5/28/82 R.W., D.B., J.B.

- A - Found small R.R. spike on surface from witness ties.
- 9 43.52' N.W. to "+" N.E. cor. catch basin (P)
- 58.54' N.W. to duplex NE/S telephone pole
- 36.59' N.E. to nail/shiner SW/S power pole
- 83.16' S.E. to duplex N/S telephone pole
- 58.54' S.E. to R/W monument
- 29.35' S.W. to "+" S.E. corner catch basin (P)

5/12/82 R.W., D.B., J.B.

- B - Found R.R. spike over top center of stone (4" x 9" x 12") 12" below road surface. Placed center of punched R.R. spike on surface over top center of stone. P.K.'s 6' N&W. Stone is 5.3' north of south edge 16' pavement.
- 18.42' N.N.W. to P.K. nail E/S power pole
- 79.96' E.S.E. to duplex NE/S telephone pole
- 50.98' S. to P.K. nail wood post
- 73..65' W.S.W. to duplex NW/telephone pole

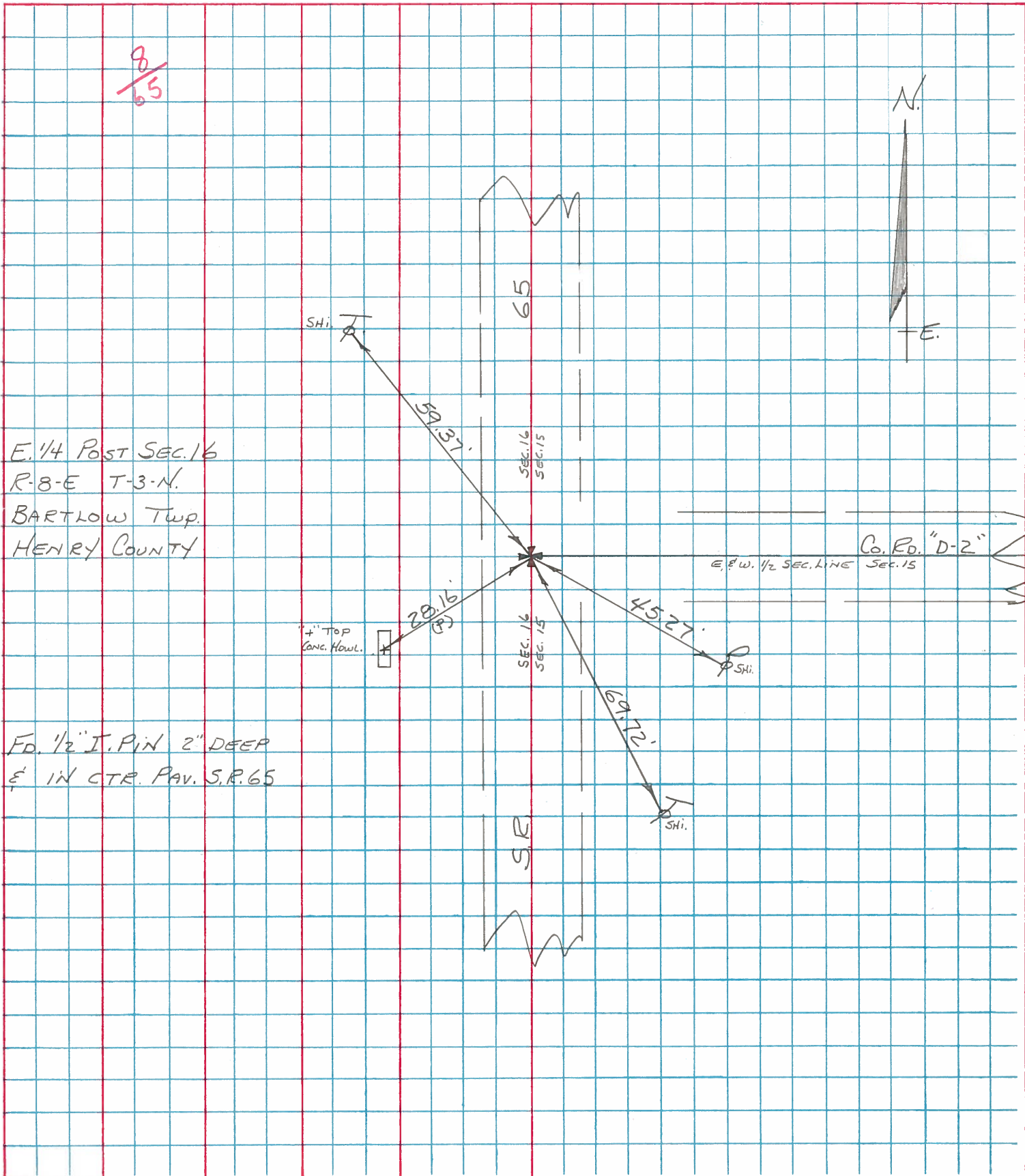
5/27/82 R.W., D.B., J.B.

- C - Found 1/2" iron pin in center of pavement 4" below road surface.
- 8 30.88' N.E. to duplex SW/S underground cable marker
- 45.21' S.E. to nail/ shiner NW/S power pole
- 27.22' S.E. to "+" on east wall catch basin (P)
- 28.44' S.W. to "+" on conc. headwall (P)

PERSONNEL	TITLE	PERSONNEL	TITLE
BURNSIDE			
SMITH			
BOWERS			
MEAD			

COUNTY HENRY DATE 11-25-74
 S. R. 65 WEATHER CLEAR
 SEC. E. 1/4 Post SEC. 16 BARTLOW Twp. TEMP. +34°
 SEC. 16

DESCRIPTION REF. TO SEC. COR. LEFT CENTER LINE RIGHT JOB NO.



E. 1/4 Post SEC. 16
 R-8-E T-3-N.
 BARTLOW Twp.
 HENRY COUNTY

Fd. 1/2" I. PIN 2" DEEP
 1" IN CTR. PAV. S.R. 65