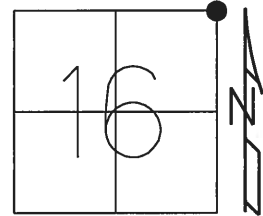


O.D.O.T. DISTRICT 2 SURVEY OFFICE (USE ONLY)

|           |               |         |        |          |         |    |
|-----------|---------------|---------|--------|----------|---------|----|
| PERSONNEL | REFERENCE NO. | 9       | SHEET  | 11       | OF      | 42 |
| NOTES     | RHOADES       | DATE    | 5/3/17 | ROUTE    | SR 65   |    |
| H.C.      | O'DONNELL     | WEATHER | CLOUDY | COUNTY   | HENRY   |    |
| R.C.      | HELDMAN       | TEMP.   | 52°    | TOWNSHIP | BARTLOW |    |
|           |               |         |        | SECTION  | 16      |    |
|           |               |         |        | T        | 3       | N  |
|           |               |         |        | R        | 8       | E  |

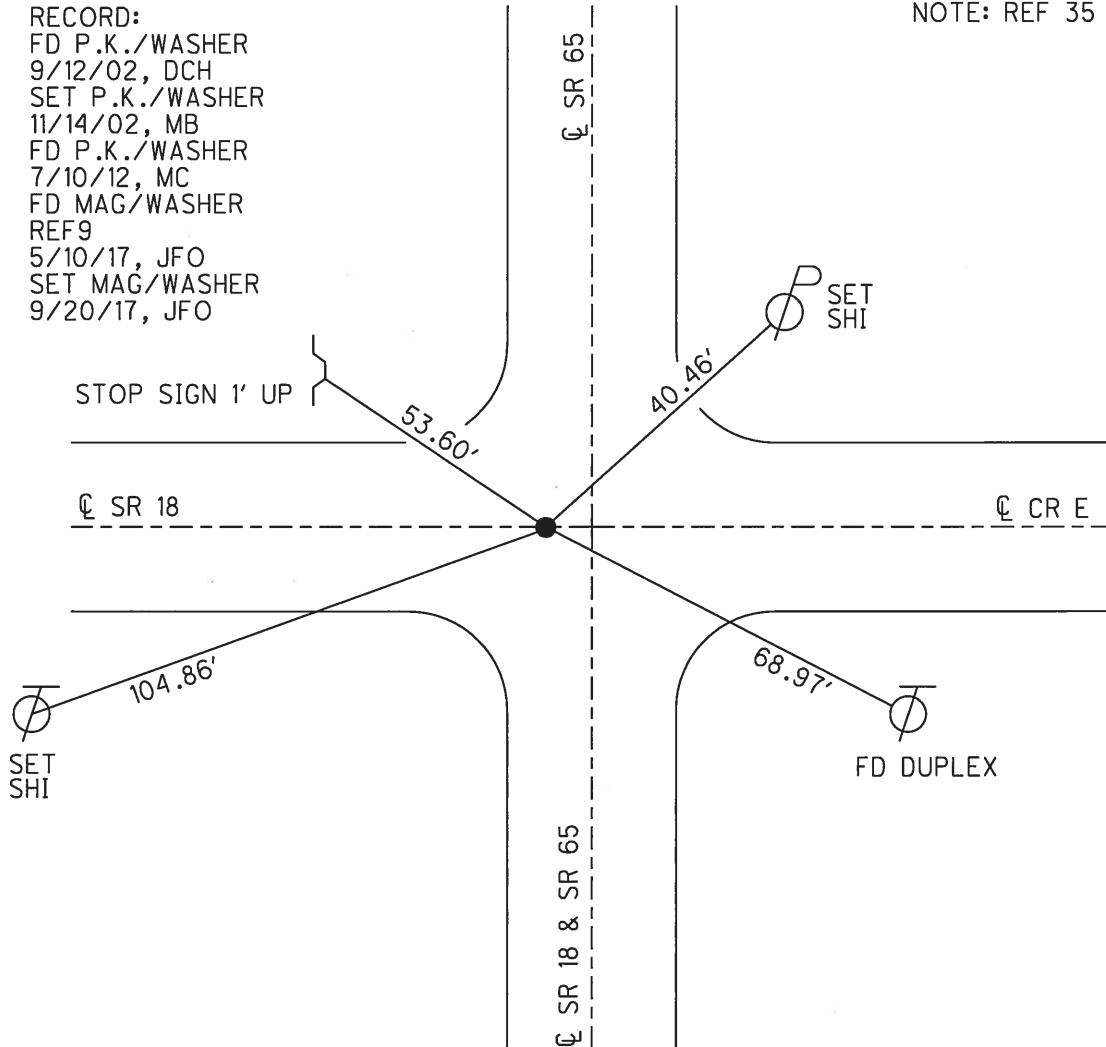
TYPE MONUMENT MAG/WASHER  
 ON SURFACE - ~~BELOW~~ ON  
~~LEFT~~ - CL PAV'T - RIGHT 2'  
- TO - EDGE PAVEMENT  
 S.L.M. 211+11



GRID: NORTHING: 571197.153 EASTING: 1572515.028

RECORD:  
 FD P.K./WASHER  
 9/12/02, DCH  
 SET P.K./WASHER  
 11/14/02, MB  
 FD P.K./WASHER  
 7/10/12, MC  
 FD MAG/WASHER  
 REF9  
 5/10/17, JFO  
 SET MAG/WASHER  
 9/20/17, JFO

NOTE: REF 35 SR 18



O.D.O.T. DISTRICT 2 SURVEY OFFICE (USE ONLY)

PERSONNEL \_\_\_\_\_

REFERENCE NO. 9

SHEET 11 OF 42

NOTES HOMAN

DATE 09-12-02

ROUTE SR 65

H.C. BARNHISEL

WEATHER SUNNY

COUNTY HENRY

R.C. BEAUMONT

TEMP. 75°

TOWNSHIP BARTLOW

SECTION 16

T 3 N R 8 E

TYPE MONUMENT \_\_\_\_\_ PK/WASHER \_\_\_\_\_

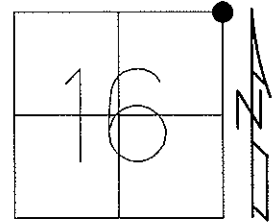
ON SURFACE - ~~BELOW~~ \_\_\_\_\_ ON \_\_\_\_\_

LEFT -  $\odot$  PAV'T - RIGHT \_\_\_\_\_ 4.4' \_\_\_\_\_

- TO - \_\_\_\_\_ EDGE PAVEMENT

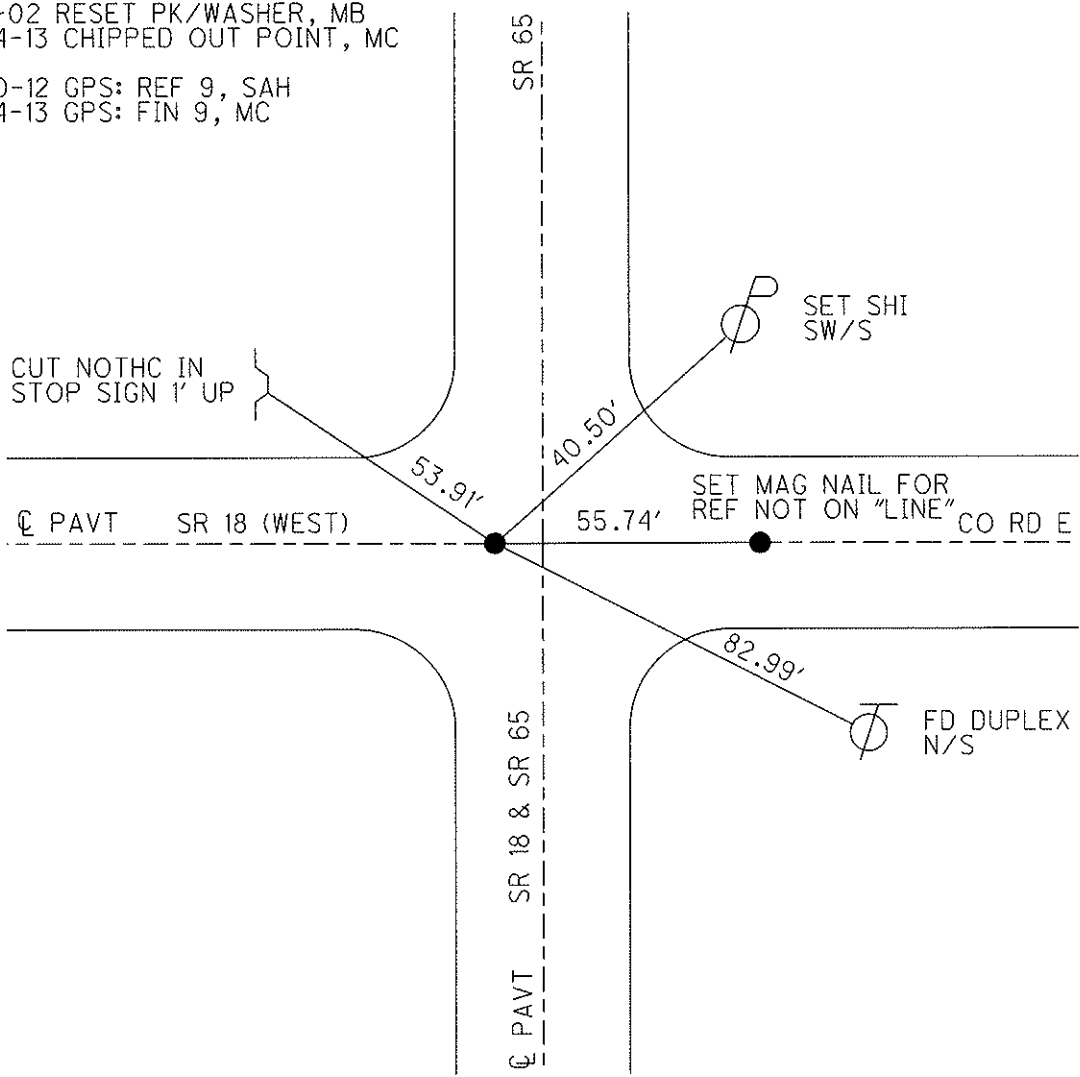
S.L.M. \_\_\_\_\_ SR 65 = 211+11 / SR 18 = 873+84

Grid: Northing: 571197.154 Easting: 1572515.020



11-14-02 RESET PK/WASHER, MB  
03-14-13 CHIPPED OUT POINT, MC

07-10-12 GPS: REF 9, SAH  
03-14-13 GPS: FIN 9, MC



# O.D.O.T. DISTRICT 2 SURVEY OFFICE

SR 18 = #35

PERSONNEL \_\_\_\_\_

REFERENCE NO. 9

SHEET 10 OF 29

NOTES Homan

H.C. BARNHISEL

DATE 9-12-02

ROUTE 65

R.C. BEAUMONT

WEATHER SUNNY

COUNTY HENRY

TEMP. +75°

TOWNSHIP BARTLOW

DRAWN - BARNHISEL

SECTION 16

T 3 N R 8 E

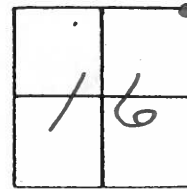
TYPE MONUMENT PK & Washer

ON SURFACE - ~~BELOW~~ yes

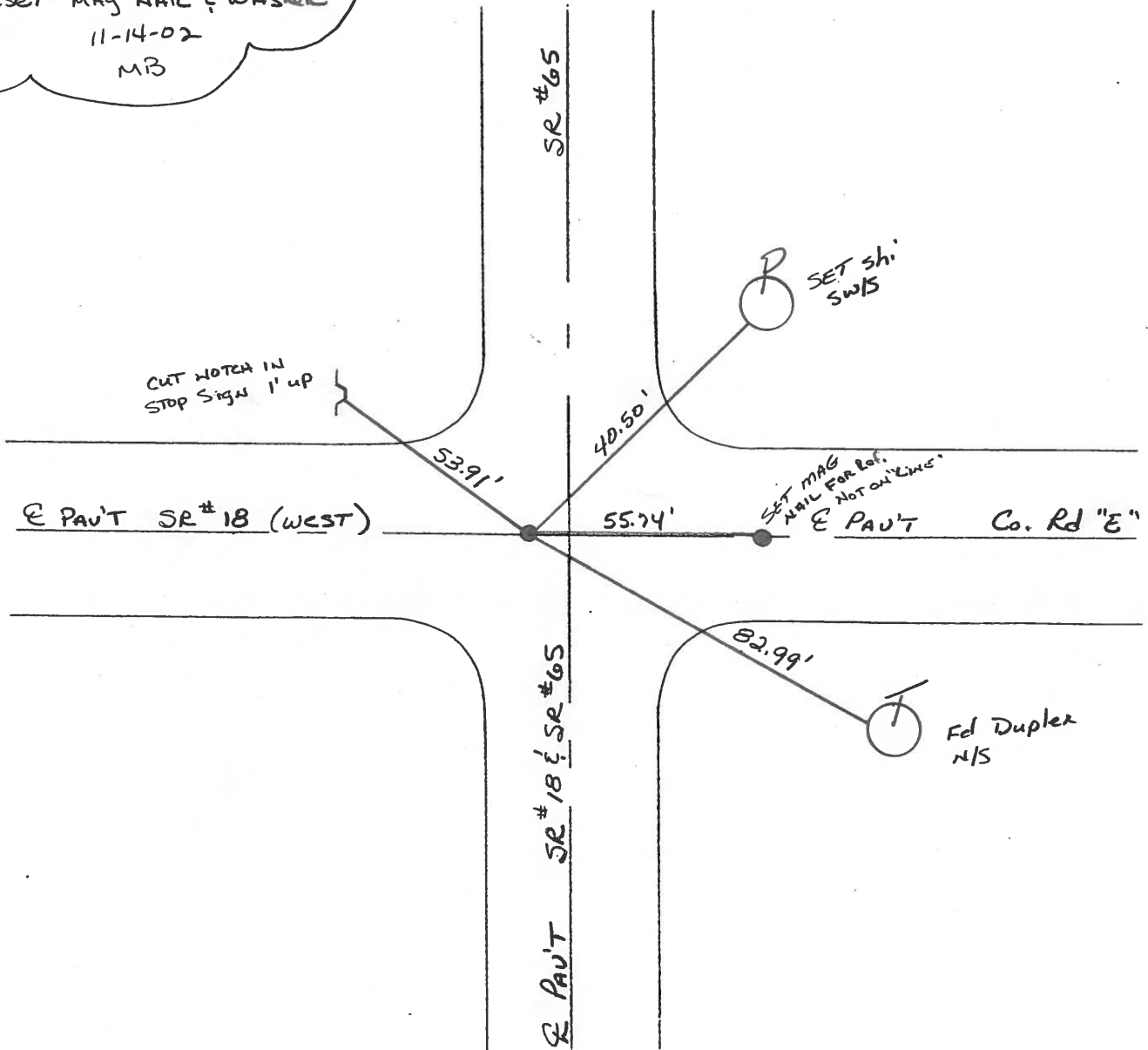
LEFT- & PAV'T. - ~~RIGHT~~ 4.4'

- TO - EDGE PAVEMENT

S.L.M. SR 65 = 211+11      SR 18 = 873+84



Reset Mag Nail & Washer  
11-14-02  
MB



SR #65

SR #18 & SR #65

E PAV'T

# O.D.O.T. DISTRICT 2 SURVEY OFFICE

PERSONNEL

SR 65 #9  
REFERENCE NO. SR 18 #35 SHEET 10 OF 18

NOTES BARNHISEL

H.C. KUSE

DATE 2-21-93

ROUTE SR 65

R.C. BARNHISEL

WEATHER SUNNY

COUNTY HENRY

OTTO P

TEMP. +75° F

TOWNSHIP BARTLOW

SECTION 16

T. 3 N. R. 8 E.

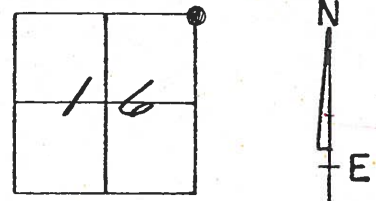
TYPE MONUMENT PK & WASHER

ON SURFACE - BELOW YES

LEFT - C PAV'T. - RIGHT 4.4 LT. OF 4 65

TO EDGE PAVEMENT

S.L.M. 212+11 212+23 ~~212+10~~ (SR 18 = 873+84)



SET PK & WASHER  
10-13-93  
MB

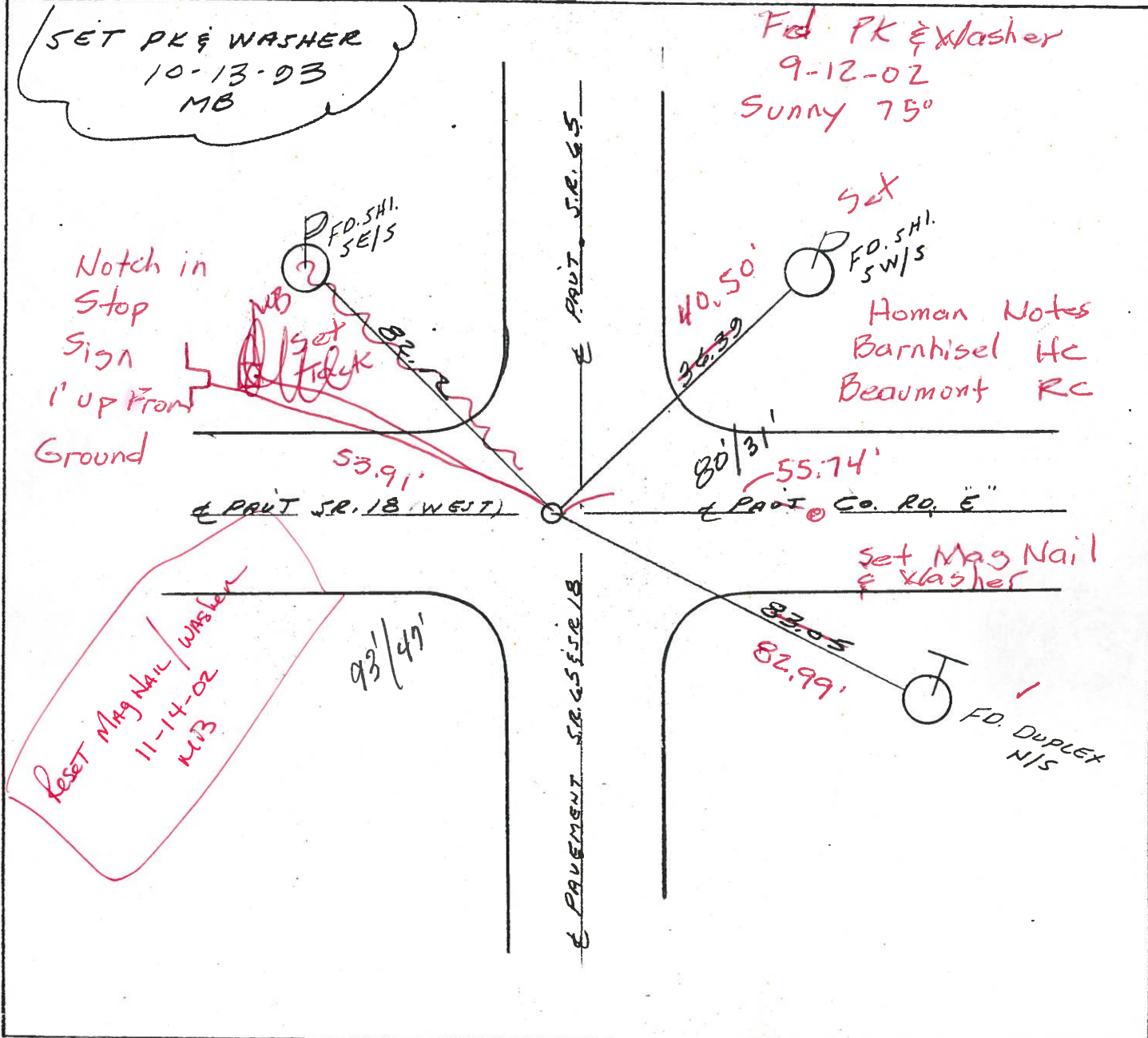
Set PK & Washer  
9-12-02  
Sunny 75°

Notch in  
Stop  
Sign  
1' up front  
Ground

Set  
FD. SH.  
SW/S  
Homan Notes  
Barnhisel HC  
Beaumont RC

Reset Mag Nail / Washer  
11-14-02  
MB

Set Mag Nail  
& Washer



# O.D.O.T. DISTRICT 2 SURVEY OFFICE

PERSONNEL \_\_\_\_\_

REFERENCE NO. 9  
#35 on SR 18

SHEET \_\_\_\_\_ OF \_\_\_\_\_

NOTES Hoffman

H.C. BARNHISEL

R.C. LoeHRKE

DATE 5-15-85

WEATHER P. Clear

TEMP. 70°

ROUTE SR 65

COUNTY HENRY

TOWNSHIP BARTLOW

SECTION 16

T3 NR 8 E

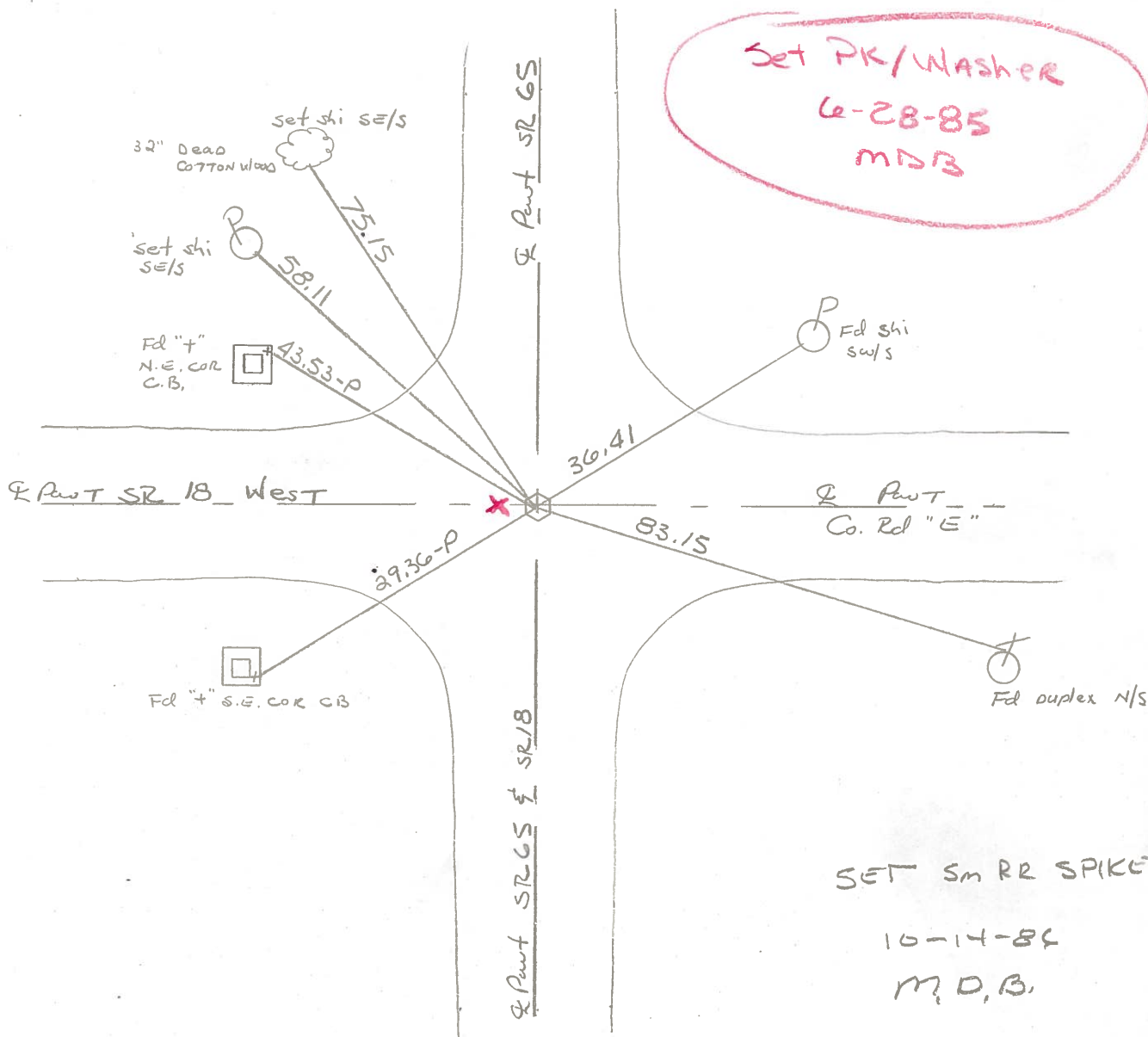
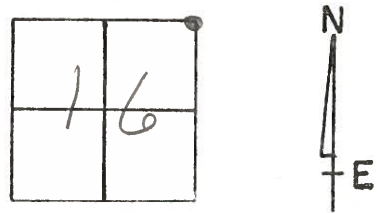
TYPE MONUMENT SMALL R.R. SPIKE

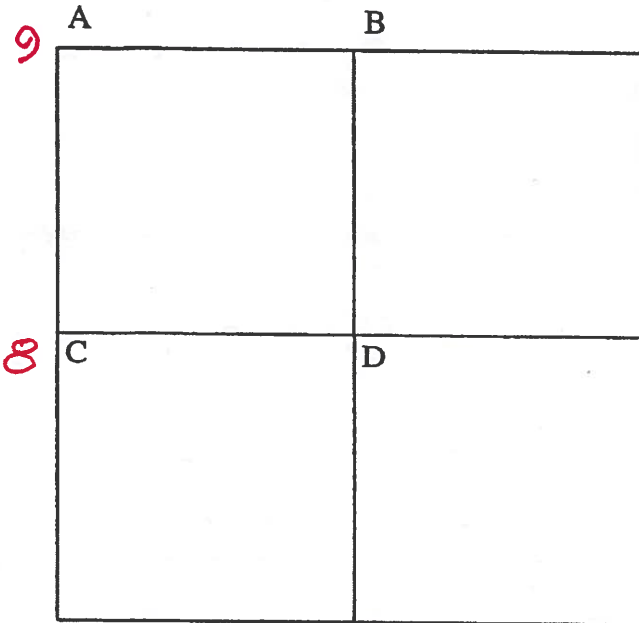
ON SURFACE BELOW

LEFT- ☉ PAV'T. - RIGHT ☉ ~~of 2nd Pav't~~ 4' Lt of E 65

- TO - EDGE PAVEMENT

S.L.M. 211+83 (SR 18 873+84)





COUNTY: HENRY

TOWNSHIP: BARTLOW

T- 3 -N R- 8 -E

SECTION: 15

5/28/82 R.W., D.B., J.B.

- 9 A - Found small R.R. spike on surface from witness ties.  
 43.52' N.W. to "+" N.E. cor. catch basin (P)  
 58.54' N.W. to duplex NE/S telephone pole  
 36.59' N.E. to nail/shiner SW/S power pole  
 83.16' S.E. to duplex N/S telephone pole  
 58.54' S.E. to R/W monument  
 29.35' S.W. to "+" S.E. corner catch basin (P)

5/12/82 R.W., D.B., J.B.

- B - Found R.R. spike over top center of stone (4" x 9" x 12") 12" below road surface. Placed center of punched R.R. spike on surface over top center of stone. P.K.'s 6' N&W. Stone is 5.3' north of south edge 16' pavement.  
 18.42' N.N.W. to P.K. nail E/S power pole  
 79.96' E.S.E. to duplex NE/S telephone pole  
 50.98' S. to P.K. nail wood post  
 73..65' W.S.W. to duplex NW/telephone pole

5/27/82 R.W., D.B., J.B.

- 8 C - Found 1/2" iron pin in center of pavement 4" below road surface.  
 30.88' N.E. to duplex SW/S underground cable marker  
 45.21' S.E. to nail/ shiner NW/S power pole  
 27.22' S.E. to "+" on east wall catch basin (P)  
 28.44' S.W. to "+" on conc. headwall (P)



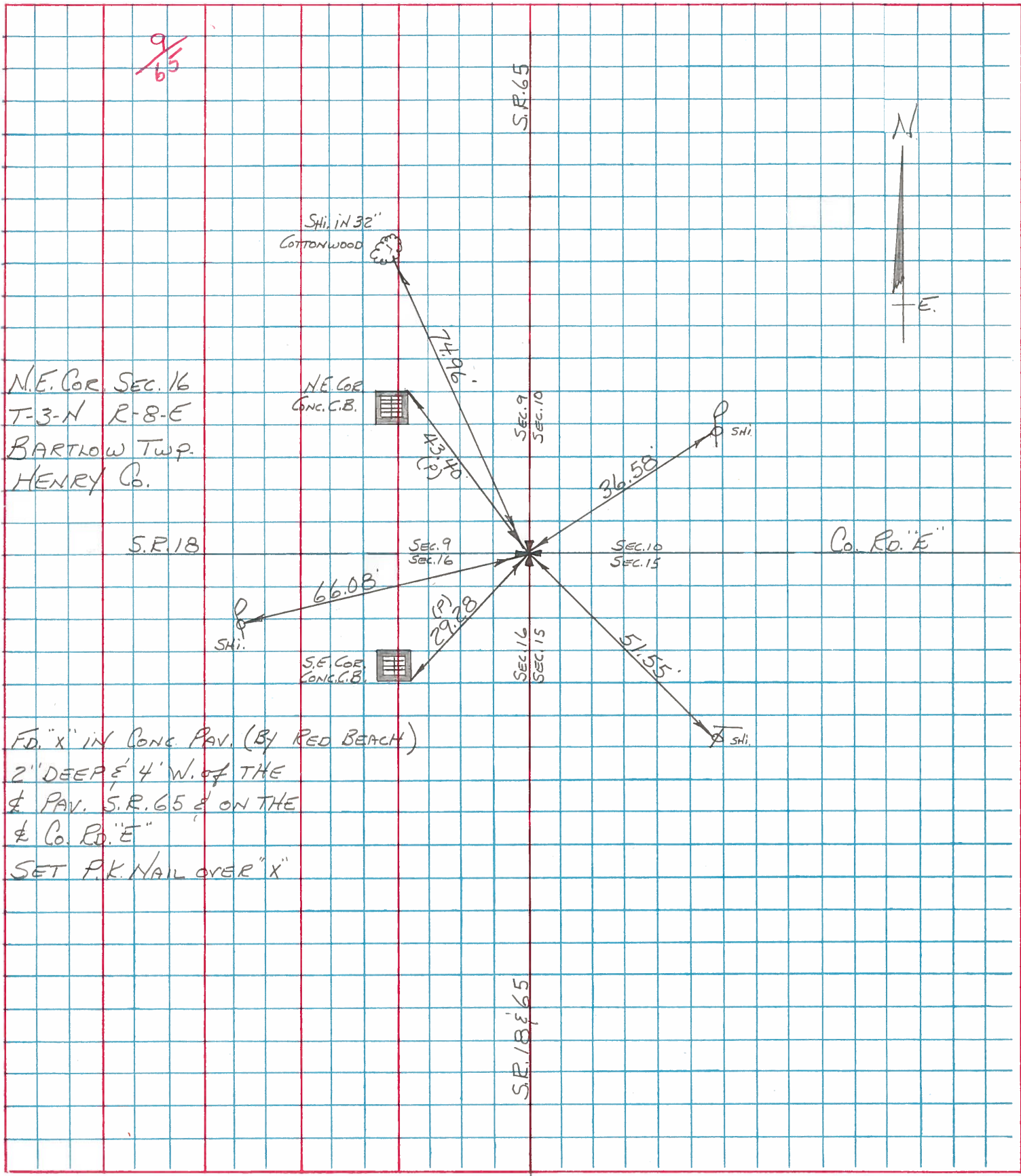
| PERSONNEL | TITLE | PERSONNEL | TITLE |
|-----------|-------|-----------|-------|
| BURNSIDE  |       |           |       |
| SMITH     |       |           |       |
| BOWERS    |       |           |       |
| MEAD      |       |           |       |

COUNTY HENRY DATE 11 - -74

S. R. 65 & 18 WEATHER

SEC. N.E. COR. SEC. 16 TEMP.

| DESCRIPTION | REF. TO SECTION | CORNER      | JOB NO. |
|-------------|-----------------|-------------|---------|
|             | LEFT            | CENTER LINE | RIGHT   |



FD. "x" IN CONG. PAV. (BY RED BEACH)  
 2" DEEP & 4" W. OF THE  
 & PAV. S.R. 65 & ON THE  
 & Co. Rd. "E"  
 SET P.K. NAIL OVER "x"

