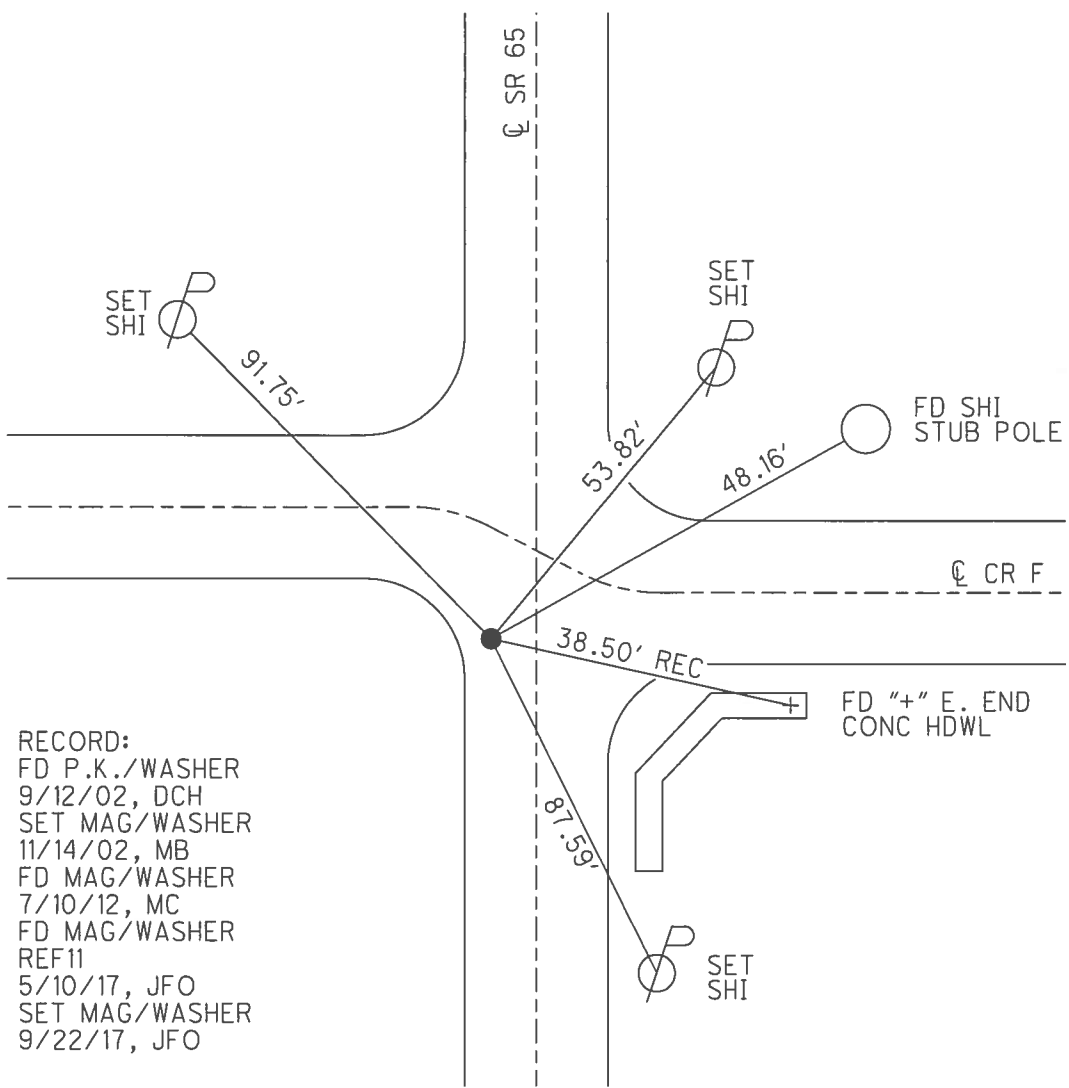
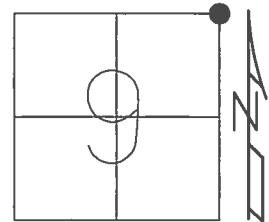


O.D.O.T. DISTRICT 2 SURVEY OFFICE (USE ONLY)

PERSONNEL _____ REFERENCE NO. 11 SHEET 13 OF 42
 NOTES RHOADES DATE 5/3/17 ROUTE SR 65
 H.C. O'DONNELL WEATHER CLOUDY COUNTY HENRY
 R.C. HELDMAN TEMP. 54° TOWNSHIP BARTLOW
 _____ SECTION 9
 _____ T 3 N R 8 E

TYPE MONUMENT MAG/WASHER
 ON SURFACE - ~~BELOW~~ ON
 LEFT - ☉ PAV'T - ~~RIGHT~~ 7.7'
2.4' TO LT EDGE PAVEMENT
 S.L.M. 263+99
 GRID: NORTHING: 576477.651 EASTING: 1572517.841

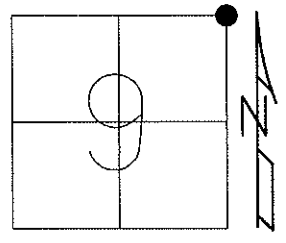


RECORD:
 FD P.K./WASHER
 9/12/02, DCH
 SET MAG/WASHER
 11/14/02, MB
 FD MAG/WASHER
 7/10/12, MC
 FD MAG/WASHER
 REF11
 5/10/17, JFO
 SET MAG/WASHER
 9/22/17, JFO

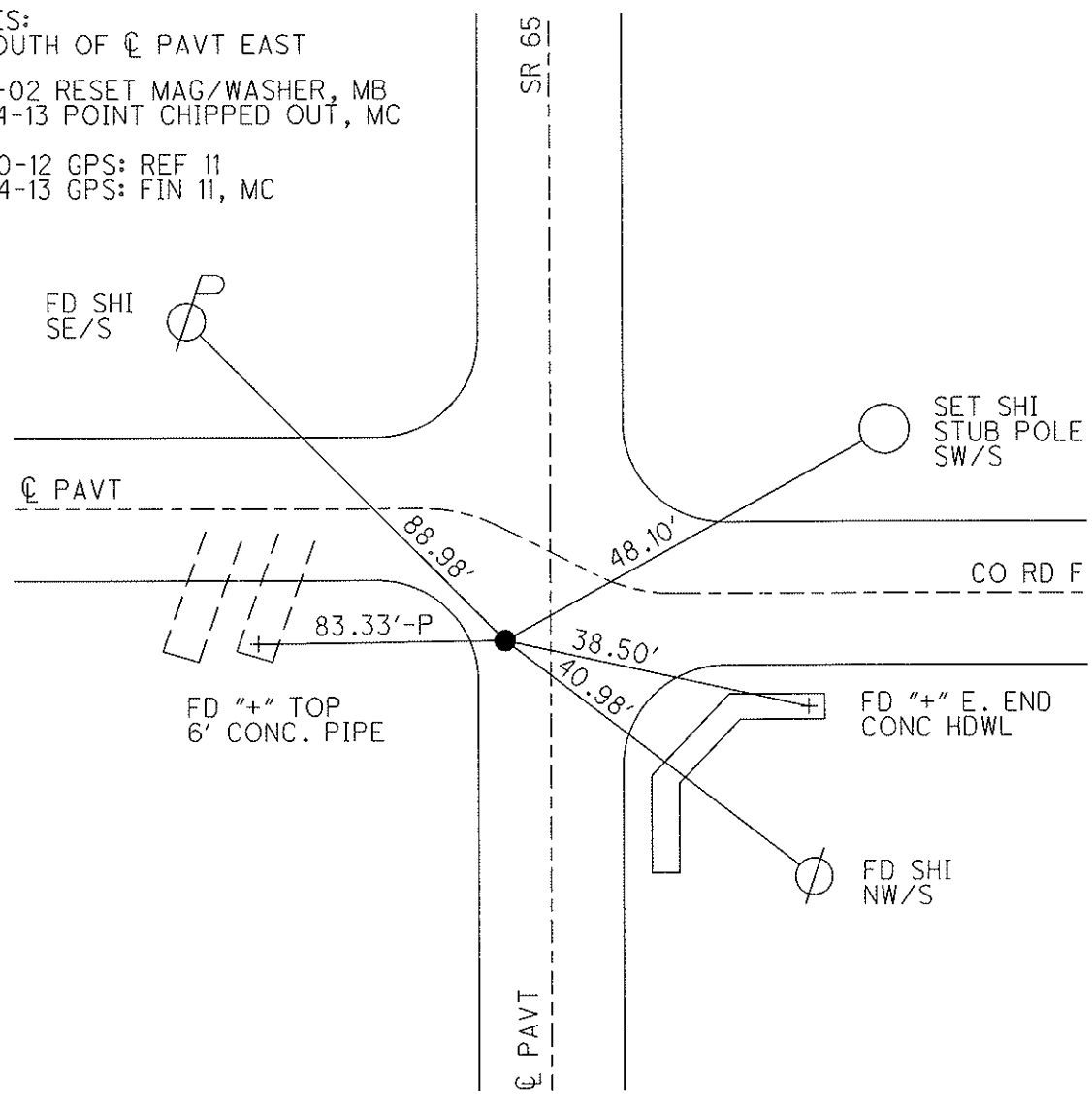
O.D.O.T. DISTRICT 2 SURVEY OFFICE (USE ONLY)

PERSONNEL	REFERENCE NO. <u>11</u>	SHEET <u>13</u> OF <u>42</u>
NOTES <u>BEAUMONT</u>	DATE <u>09-12-02</u>	ROUTE <u>SR 65</u>
H.C. <u>HOMAN</u>	WEATHER <u>SUNNY</u>	COUNTY <u>HENRY</u>
R.C. <u>BEAUMONT</u>	TEMP. <u>80°</u>	TOWNSHIP <u>BARTLOW</u>
		SECTION <u>9</u>
		T <u>3</u> N R <u>8</u> E

TYPE MONUMENT PK/WASHER
 ON SURFACE - BELOW ON
 LEFT - ☉ PAV'T - RIGHT 7.7'
2.4' TO LT EDGE PAVEMENT
 S.L.M. 263+99
 Grid: Northing: 576477.661 Easting: 1572517.836



NOTES:
 5' SOUTH OF ☉ PAVT EAST
 11-14-02 RESET MAG/WASHER, MB
 03-14-13 POINT CHIPPED OUT, MC
 07-10-12 GPS: REF 11
 03-14-13 GPS: FIN 11, MC



O.D.O.T. DISTRICT 2 SURVEY OFFICE

PERSONNEL

REFERENCE NO. 11

SHEET 12 OF 29

NOTES Beaumont - RC

H.C. Homan

DATE 9-12-02

ROUTE 65

R.C. _____

WEATHER SUNNY

COUNTY HENRY

TEMP. +80°

TOWNSHIP BARTLOW

DRAWN - BARNHISEL

SECTION 9

T 3 N R 8 E

TYPE MONUMENT PK ^E WASHER

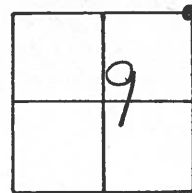
ON SURFACE - ~~BELOW~~ yes

LEFT- & PAU'T. - ~~RIGHT~~ 7.7'

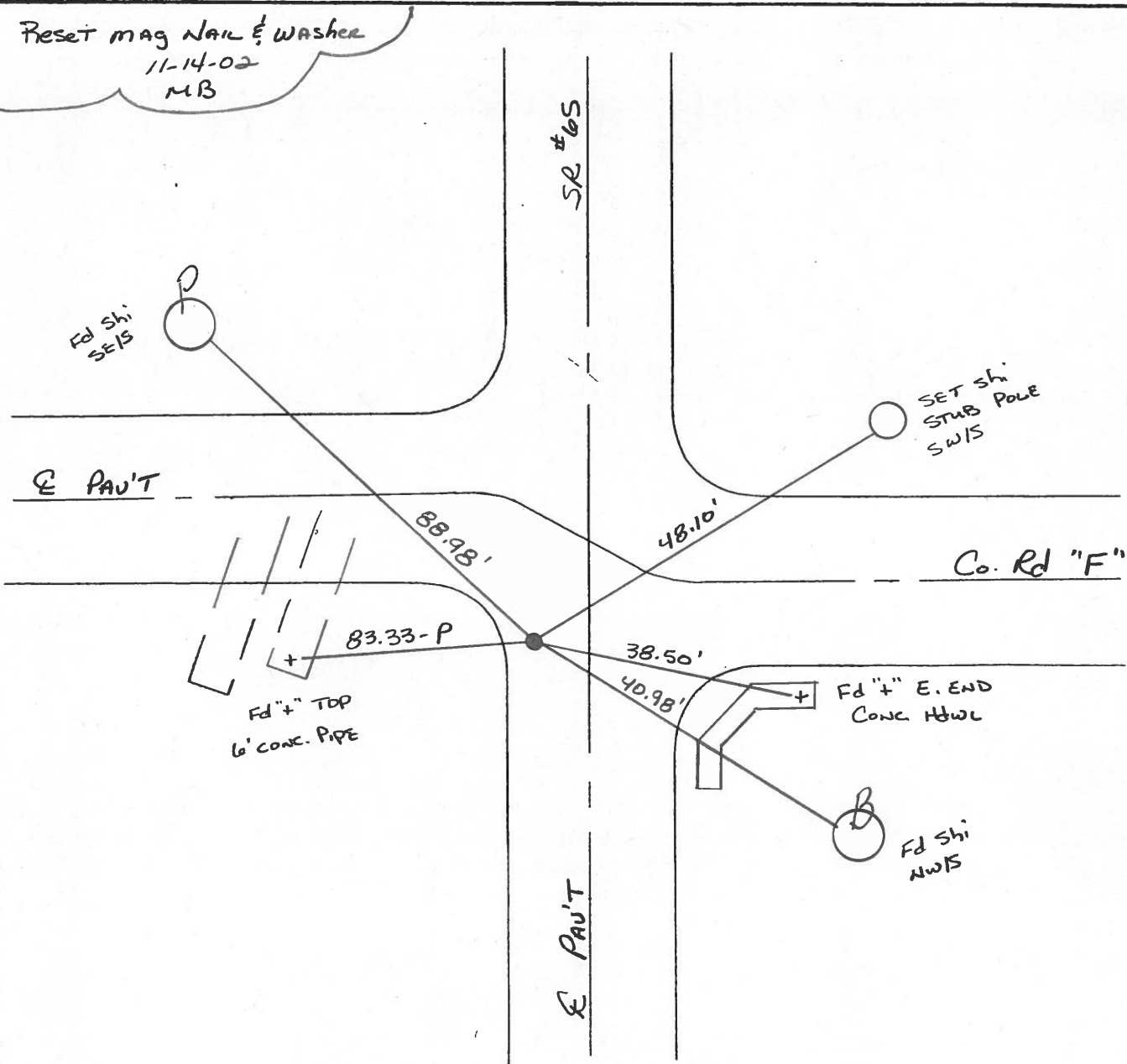
2.4' TO LT EDGE PAVEMENT

S.L.M. 263+99

5' South of E PAU'T EAST



Reset mag Nail ^E Washer
11-14-02
MB



O.D.O.T. DISTRICT 2 SURVEY OFFICE

PERSONNEL

REFERENCE NO. 11

SHEET 12 OF 18

NOTES BARNHISEL

H.C. KUSZ

DATE 7-21-93

ROUTE S.R. 65

R.C. BARNHISEL

WEATHER SUNNY

COUNTY Henry

OTTO

TEMP. +80°F

TOWNSHIP Bartlow

SECTION 9

T.3 N R 8 E

TYPE MONUMENT P.K. + WASHER

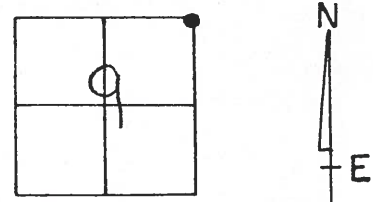
ON SURFACE - ~~BELOW~~ YES

LEFT- & PAV'T. - RIGHT 7.7'

2.7 TO LT EDGE PAVEMENT

S.L.M. 265+11

263+99



SET PK 3 WASHER MB

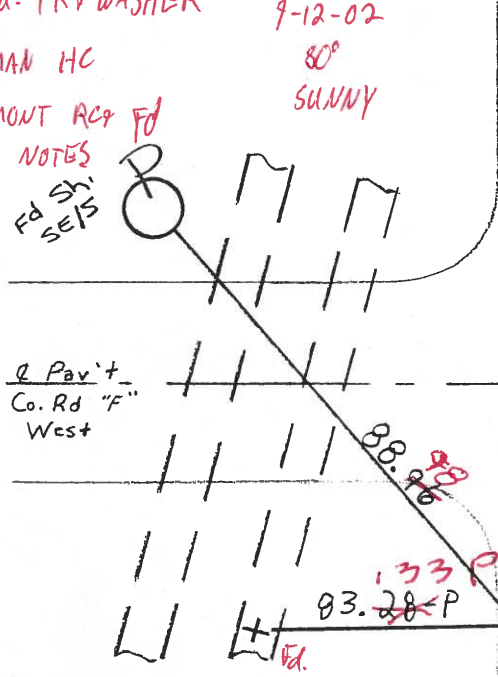
5.0' S. of & Pav't Rd. "F" east
Fd. PK + WASHER 9-12-02

HOMAN HC 80°
SUNNY

BEAUMONT ACq Fd
NOTES
Fd Shi
SE/S

Reset Mag Nail / Washer
11-14-02
MB

& Pav't
Co. Rd "F"
West



& Pav't
Co. Rd "F"
East

Fd " + " TOP
6' CONC. PIPE

Fd " + " E. END
CONC. HDWL.

Fd
SET Shi
NW/S

& Pav't

O.D.O.T. DISTRICT 2 SURVEY OFFICE

PERSONNEL

REFERENCE NO. 11

SHEET OF

NOTES Hoffman

H.C. BARNHISEL

R.C. LOSHKES

DATE 5-24-85

WEATHER Clear

TEMP. 80°

ROUTE SR 65

COUNTY HENRY

TOWNSHIP BACTLOW

SECTION 9

T.3 NR.8 E

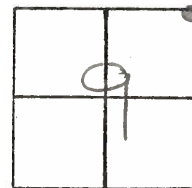
TYPE MONUMENT P.K. Nail

ON SURFACE - BELOW yes

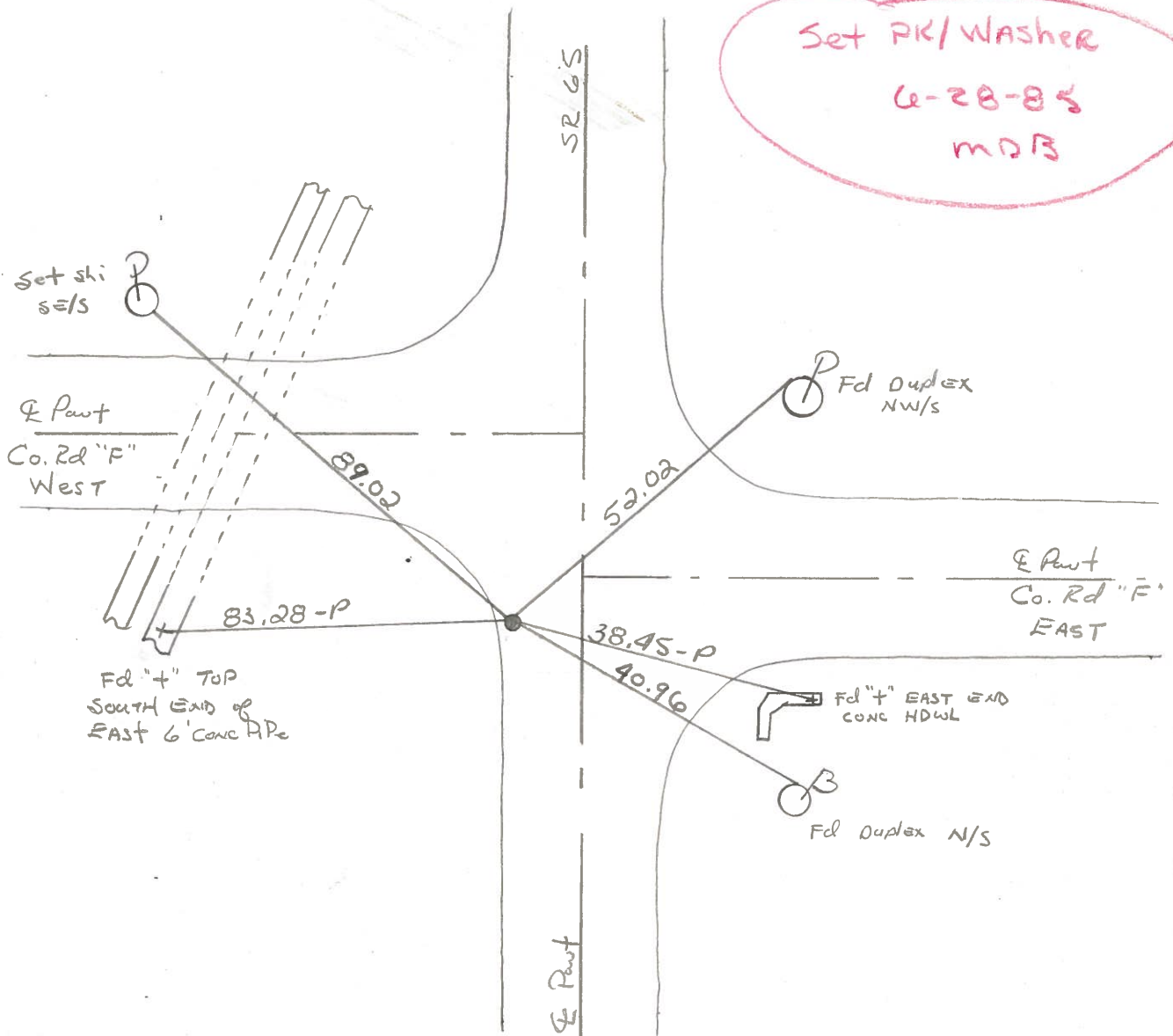
LEFT-☉ PAV'T. - RIGHT 7.7

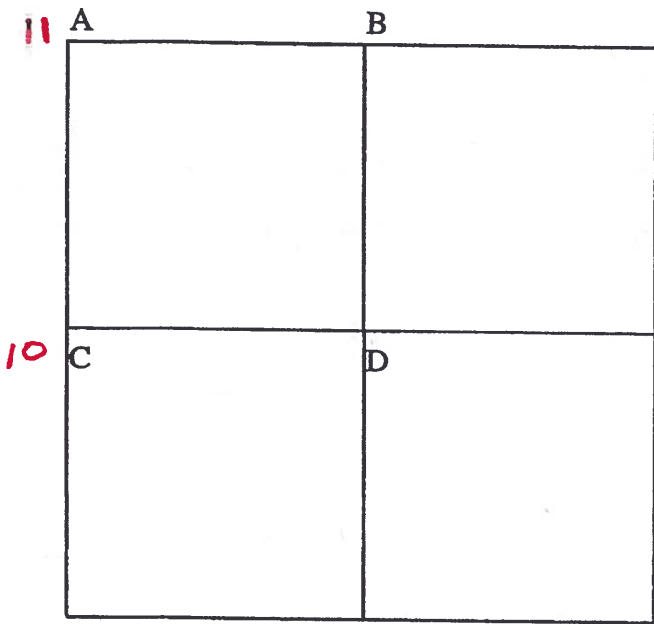
1.3 TO LT EDGE PAVEMENT

S.L.M. 264 + 64



5.0' S. of Pavt Rd "F" EAST





COUNTY: HENRY

TOWNSHIP: BARTLOW

T-3-N R-8-E

SECTION: 10

5/11/82 R.W., D.B., J.B.
 A - Found P.K. nail on surface 1' east of west edge pavement.
 79.38' N.W. to "+" 72" R.C.P. (P)
 51.98' N.E. to duplex NW/S power pole
 38.44' S.E. to "+" east end conc. headwall
 40.92' S.E. to duplex N/S power pole
 83.33' W. to "+" 72" R.C.P. (P)

9/10/82 R.W., D.B., J.B.
 B - Found stone (5" x 8" x 18"). Stone is protruding from south bank of roadside ditch. Stone is midway between, and on line between, the N.W. & N.E. corners of Section 10. Stone's location was also verified by stones located at the center of Section 10 and at the N1/4 post of Section 3.
 130.75' W.N.W. to duplex S/S power pole
 126.64' E.N.E. to duplex S/S power pole
 1.56' S.W. to P.K. N. end 12" C.M.P.(P)

5/11/82 R.W., D.B., J.B.
 C - Found R.R. spike 2.2' east of west edge pavement.
 40.88' W. to notch in near edge of angle iron post
 24.40' W.N.W. to "+" west end 12" C.M.P. (P)
 26.09' E.N.E. to "+" east end 12" C.M.P. (P)

5/12/82 R.W., D.B., J.B.
 D - Found stone beside wood post.

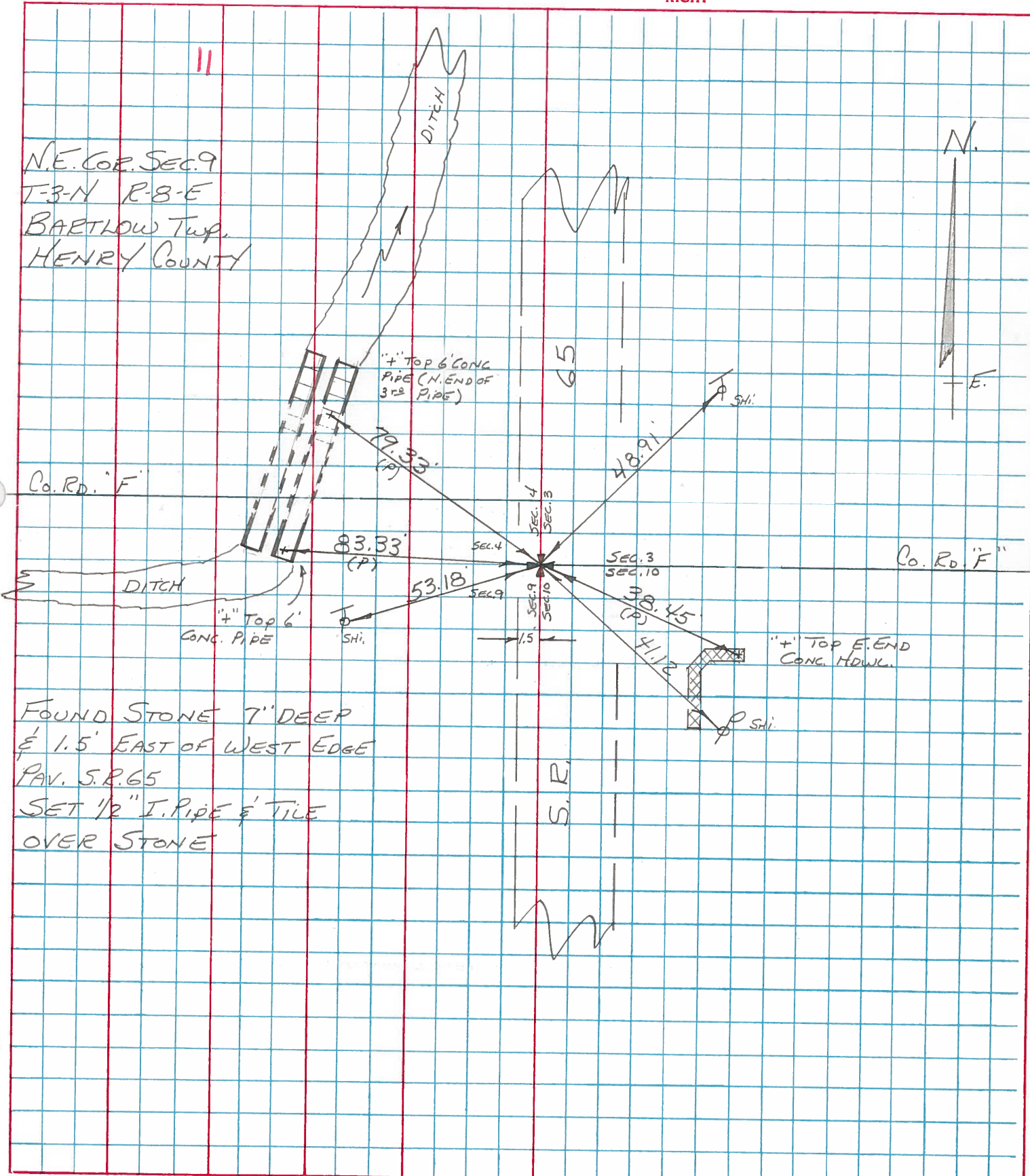
PERSONNEL	TITLE	PERSONNEL	TITLE
BURNSIDE			
SMITH			
BOWERS			
MEAD			

COUNTY HENRY DATE 11-25-74
 S. R. 65 WEATHER CLOUDY
 (BARTLOW TWP.)
 SEC. NE COR SEC. 9 TEMP. +34°

DESCRIPTION REF. TO SECTION CORNER

LEFT CENTER LINE RIGHT

JOB NO.



NE COR. SEC. 9
 T-3-N R-8-E
 BARTLOW TWP.
 HENRY COUNTY

Co. Rd. "F"

Co. Rd. "F"

FOUND STONE 7" DEEP
 & 1.5' EAST OF WEST EDGE
 PAV. S.R. 65
 SET 1/2" I. PIPE & TILE
 OVER STONE

