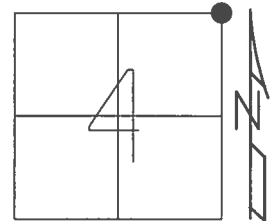


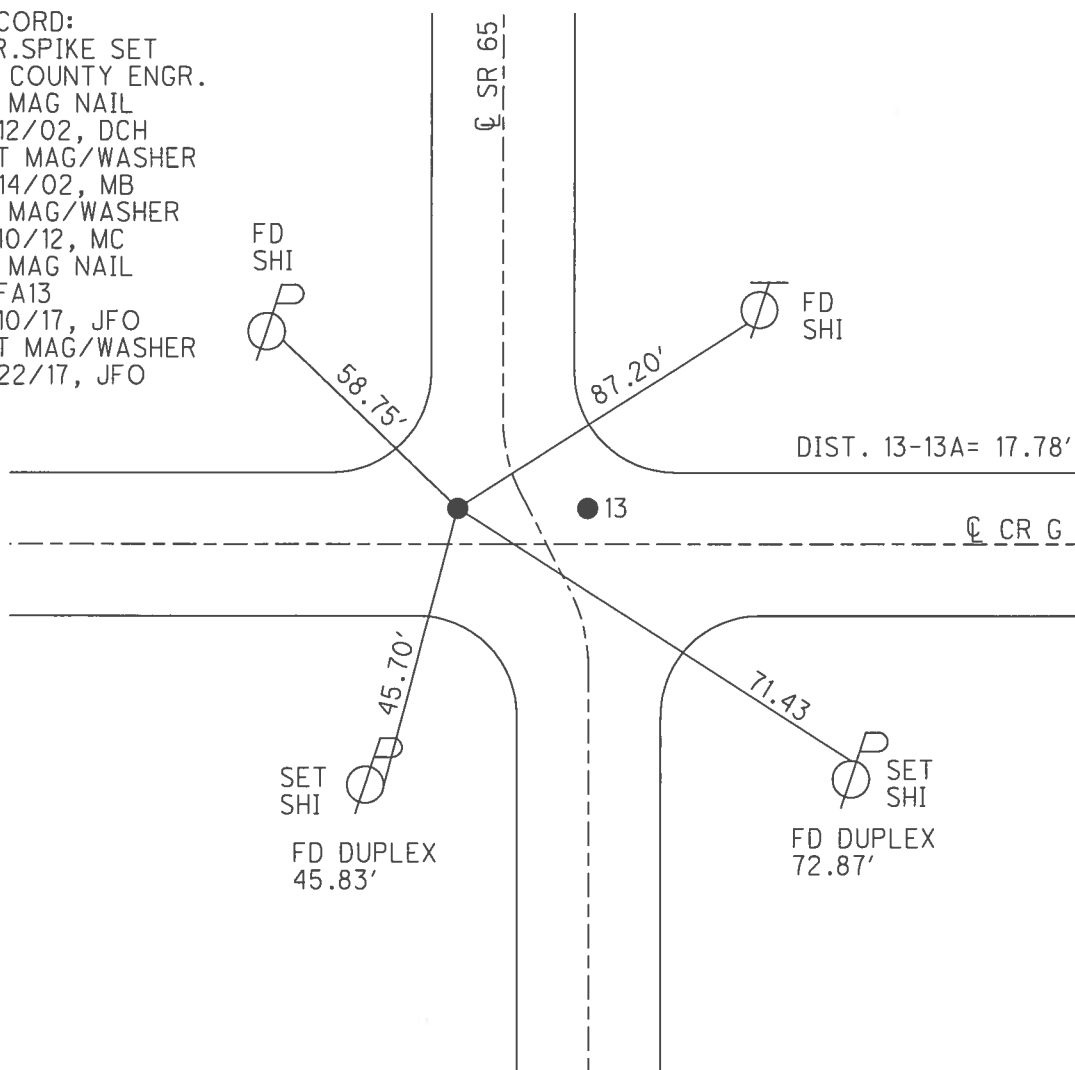
O.D.O.T. DISTRICT 2 SURVEY OFFICE (USE ONLY)

PERSONNEL	REFERENCE NO.	13 A	SHEET	16	OF	42
NOTES	RHOADES	DATE	5/8/17	ROUTE	SR 65	
H.C.	O'DONNELL	WEATHER	SUNNY	COUNTY	HENRY	
R.C.	RHOADES	TEMP.	37°	TOWNSHIP	BARTLOW	
				SECTION	4	
				T	3	N
				R	8	E

TYPE MONUMENT MAG NAIL  
 ON SURFACE - ~~BELOW~~ ON \_\_\_\_\_  
 LEFT - ☉ PAV'T - ~~RIGHT~~ 10.3', 5' N. OF ☉ E.  
 \_\_\_\_\_ TO \_\_\_\_\_ EDGE PAVEMENT  
 S.L.M. 316+59  
 GRID: NORTHING: 581750.046 EASTING: 1572492.923



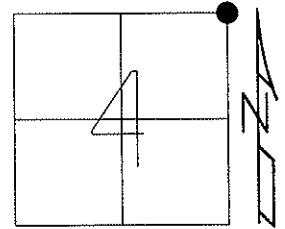
RECORD:  
 R.R.SPIKE SET  
 BY COUNTY ENGR.  
 FD MAG NAIL  
 9/12/02, DCH  
 SET MAG/WASHER  
 11/14/02, MB  
 FD MAG/WASHER  
 7/10/12, MC  
 FD MAG NAIL  
 REFA13  
 5/10/17, JFO  
 SET MAG/WASHER  
 9/22/17, JFO



O.D.O.T. DISTRICT 2 SURVEY OFFICE (USE ONLY)

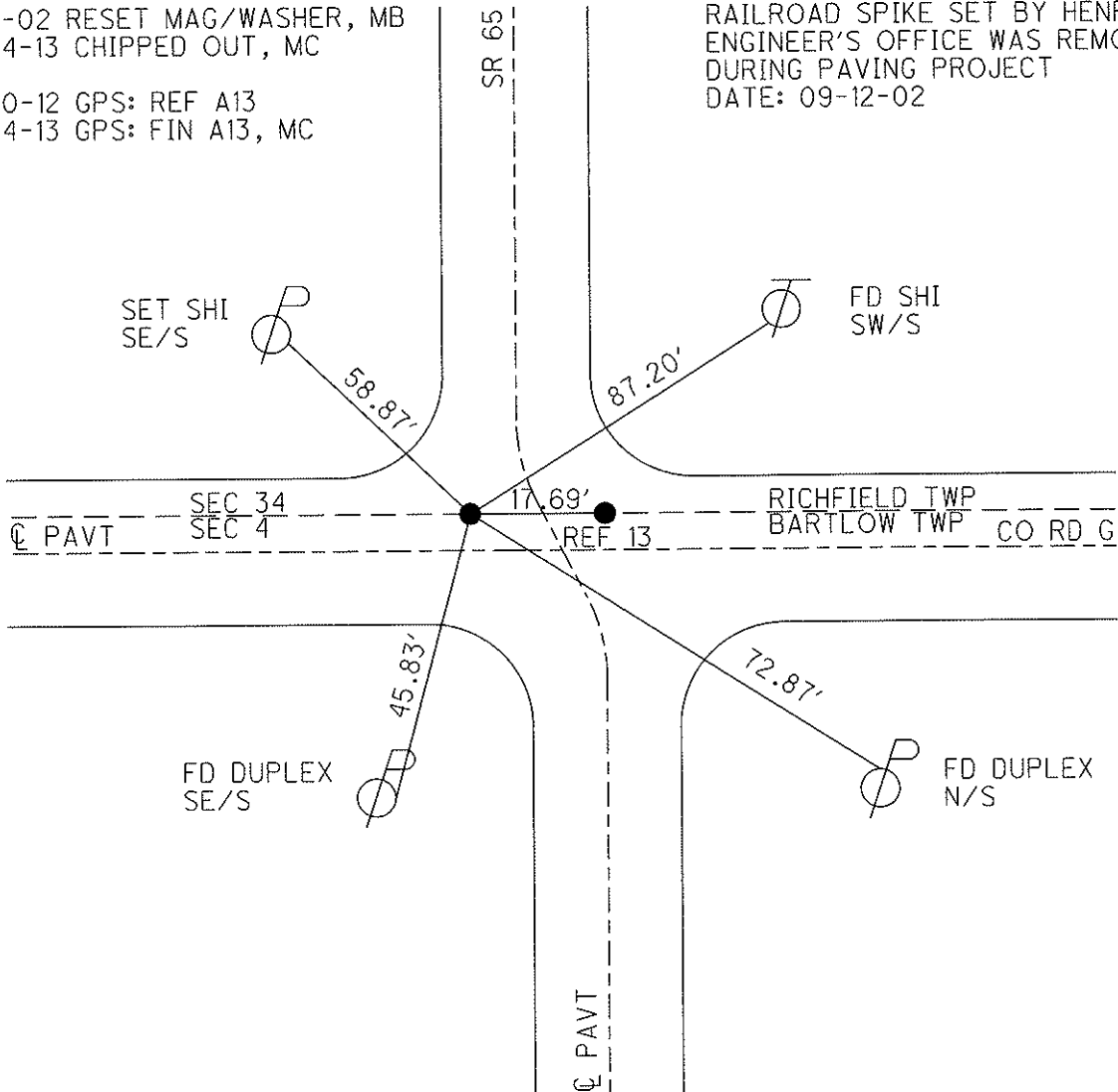
PERSONNEL	REFERENCE NO. <u>13-A</u>	SHEET <u>16</u> OF <u>42</u>
NOTES <u>BEAUMONT</u>	DATE <u>09-12-02</u>	ROUTE <u>SR 65</u>
H.C. <u>HOMAN</u>	WEATHER <u>SUNNY</u>	COUNTY <u>HENRY</u>
R.C. <u>BEAUMONT</u>	TEMP. <u>80°</u>	TOWNSHIP <u>BARTLOW</u>
		SECTION <u>4</u>
		T <u>3</u> N R <u>8</u> E

TYPE MONUMENT \_\_\_\_\_ MAG \_\_\_\_\_  
 ON SURFACE - BELOW \_\_\_\_\_ ON \_\_\_\_\_  
 LEFT -  $\odot$  PAV'T - RIGHT \_\_\_\_\_ 10.3' \_\_\_\_\_  
 - TO - EDGE PAVEMENT \_\_\_\_\_  
 S.L.M. 316+59 5' NORTH OF  $\odot$  PAVT EAST  
 Grid: Northing: 581750.113 Easting: 1572492.884



11-14-02 RESET MAG/WASHER, MB  
 03-14-13 CHIPPED OUT, MC  
 07-10-12 GPS: REF A13  
 03-14-13 GPS: FIN A13, MC

RAILROAD SPIKE SET BY HENRY CO  
 ENGINEER'S OFFICE WAS REMOVED  
 DURING PAVING PROJECT  
 DATE: 09-12-02



# O.D.O.T. DISTRICT 2 SURVEY OFFICE

PERSONNEL \_\_\_\_\_

REFERENCE NO. 13

SHEET 14 OF 29

NOTES Beaumont - RC

H.C. Homan

DATE 9-12-02

ROUTE 65

R.C. \_\_\_\_\_

WEATHER SUNNY

COUNTY HENRY

DRAWN - BARNHISEL

TEMP. +80°

TOWNSHIP BARTLOW

SECTION 4

T 3 N R 8 E

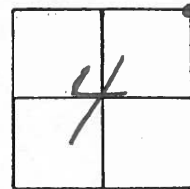
TYPE MONUMENT PK'S & WASHERS

ON SURFACE - ~~BELOW~~ yes

LEFT - PT "A" 10.3' CT - RIGHT PT "B" 7.5' RT

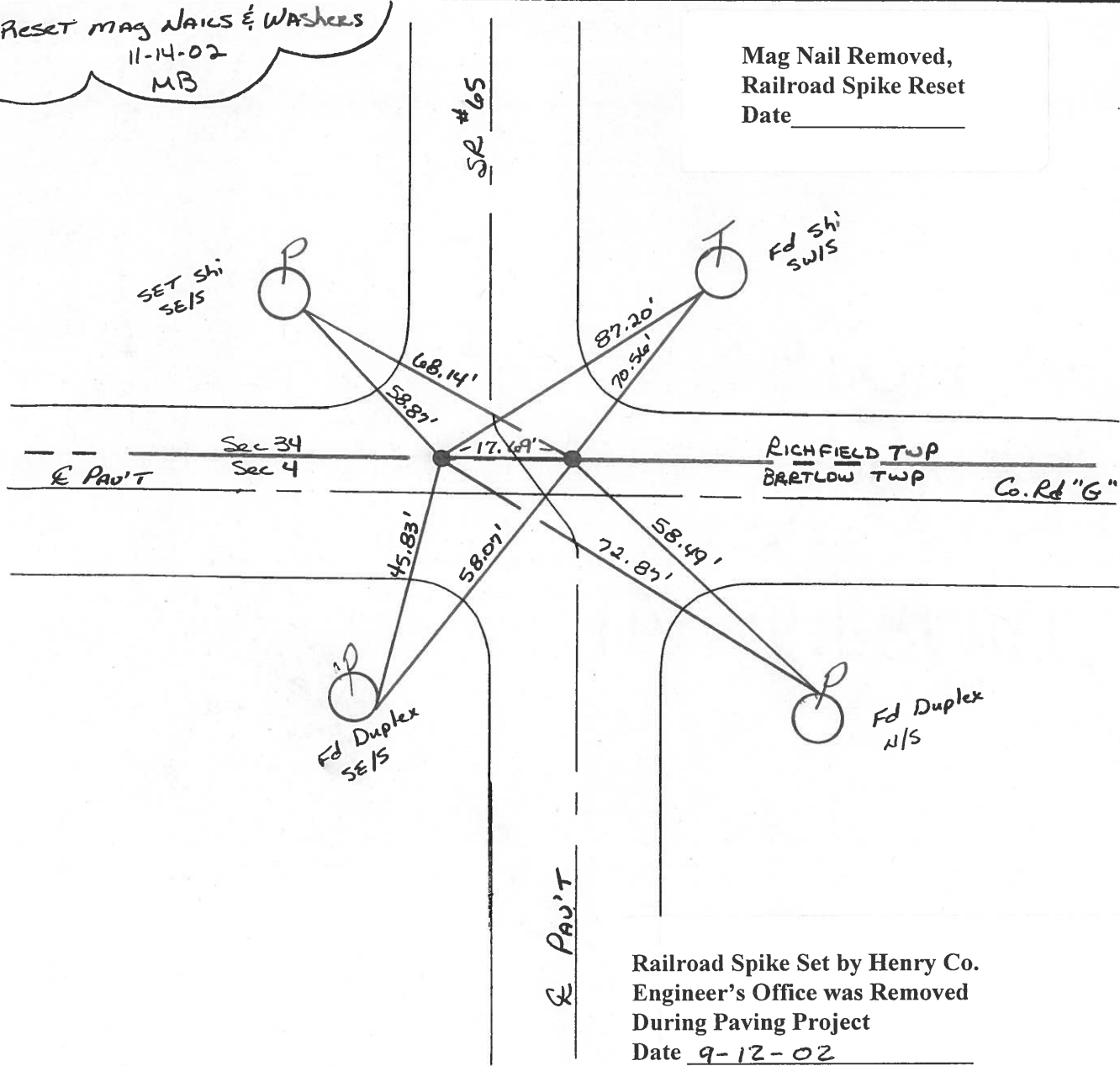
TO EDGE PAVEMENT

S.L.M. 316+59 5' NORTH OF E PAVT EAST



RESET MAG NAILS & WASHERS  
11-14-02  
MB

Mag Nail Removed,  
Railroad Spike Reset  
Date \_\_\_\_\_



Railroad Spike Set by Henry Co.  
Engineer's Office was Removed  
During Paving Project  
Date 9-12-02

# O.D.O.T. DISTRICT 2 SURVEY OFFICE

PERSONNEL

REFERENCE NO. 13

SHEET 14 OF 18

NOTES BARNHISEL

H.C. KUSZ

DATE 7-21-93

ROUTE S.R. 65

R.C. BARNHISEL

WEATHER SUNNY

COUNTY Henry

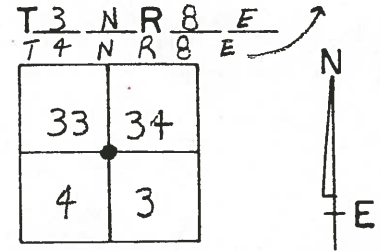
OTTO

TEMP. +80°F

TOWNSHIP Bartlow

SECTION 4, 3, 33, & 34

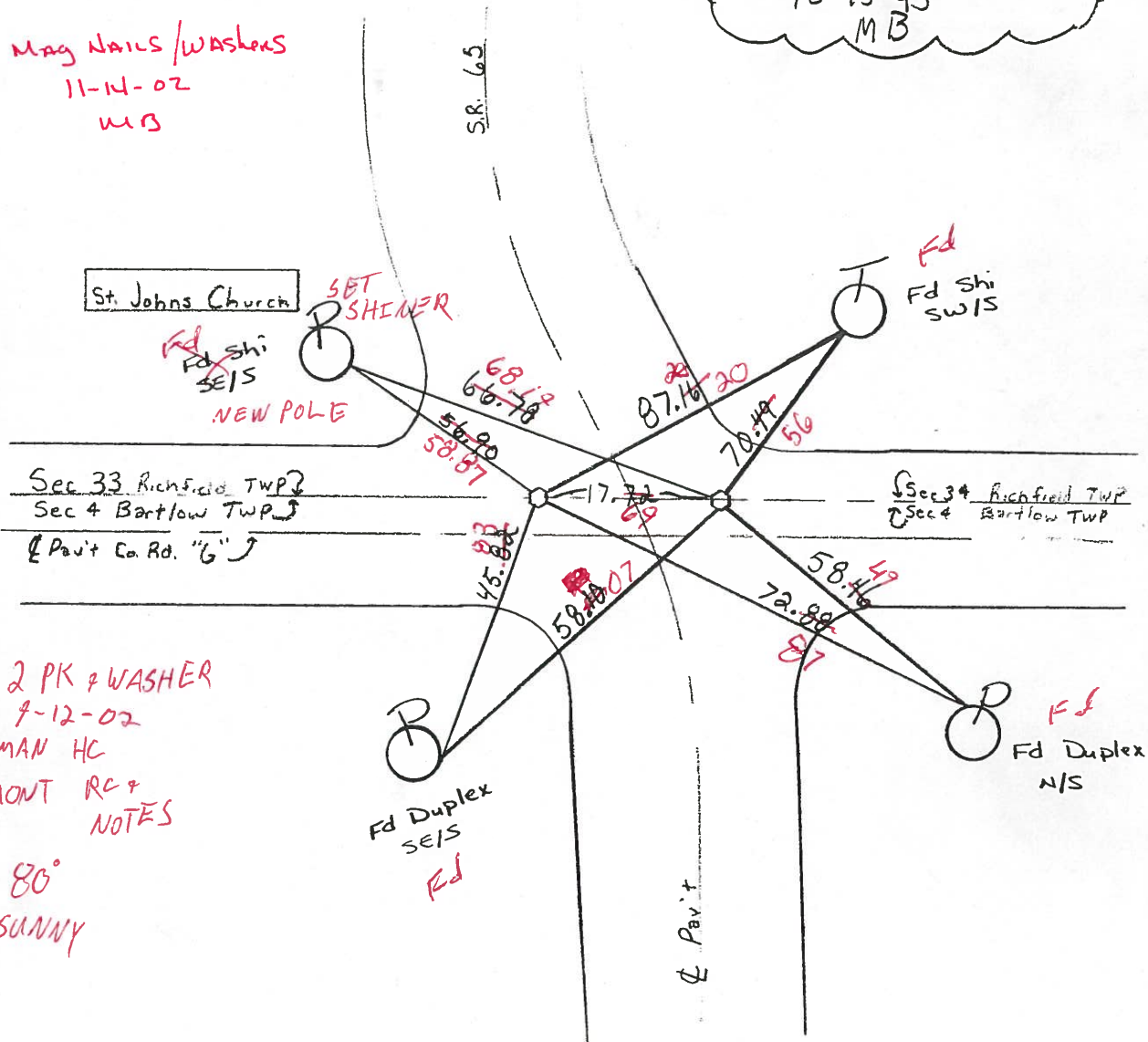
TYPE MONUMENT PT "A" PK+WASHER PT "B" PK+WASHER Removed  
 ON SURFACE - ~~BELON~~  
 LEFT - ~~PAV~~ T. - RIGHT 10.3 LT & 7.5 RT  
 TO EDGE PAVEMENT  
 S.L.M. 317+95 ~~316+83~~ 316+59



5' N. of & Pav't Rd. "6" east

RESET PK & WASHERS  
 10-13-93  
 MB

Reset Mag Nails/Washers  
 11-14-02  
 MB



Fd. 2 PK & WASHER  
 7-12-02  
 HOMAN HC  
 BEAUMONT RC &  
 NOTES  
 80°  
 SUNNY

Fd  
 Fd Duplex  
 SEIS

Fd  
 Fd Duplex  
 N/S

St. Johns Church

SET  
 SHINER

Fd Shi  
 SEIS  
 NEW POLE

Fd  
 Fd Shi  
 SWIS

Sec 33 Richfield TWP  
 Sec 4 Bartlow TWP  
 & Pav't Ca. Rd. "6"

Sec 34 Richfield TWP  
 Sec 4 Bartlow TWP

# O.D.O.T. DISTRICT 2 SURVEY OFFICE

PERSONNEL

REFERENCE NO. 13

SHEET      OF     

NOTES Hoffman

H.C. BARNHISEL

R.C. Loehrke

DATE 5-24-85

WEATHER clear

TEMP. 80°

ROUTE SR 65

COUNTY HENRY

TOWNSHIP BARTLOW

SECTION 4, 3, 33 & 34

T 3 N R 8 E  
T 4 N R 8 E

33	34
4	3



TYPE MONUMENT R.R. SPIKES @ surface

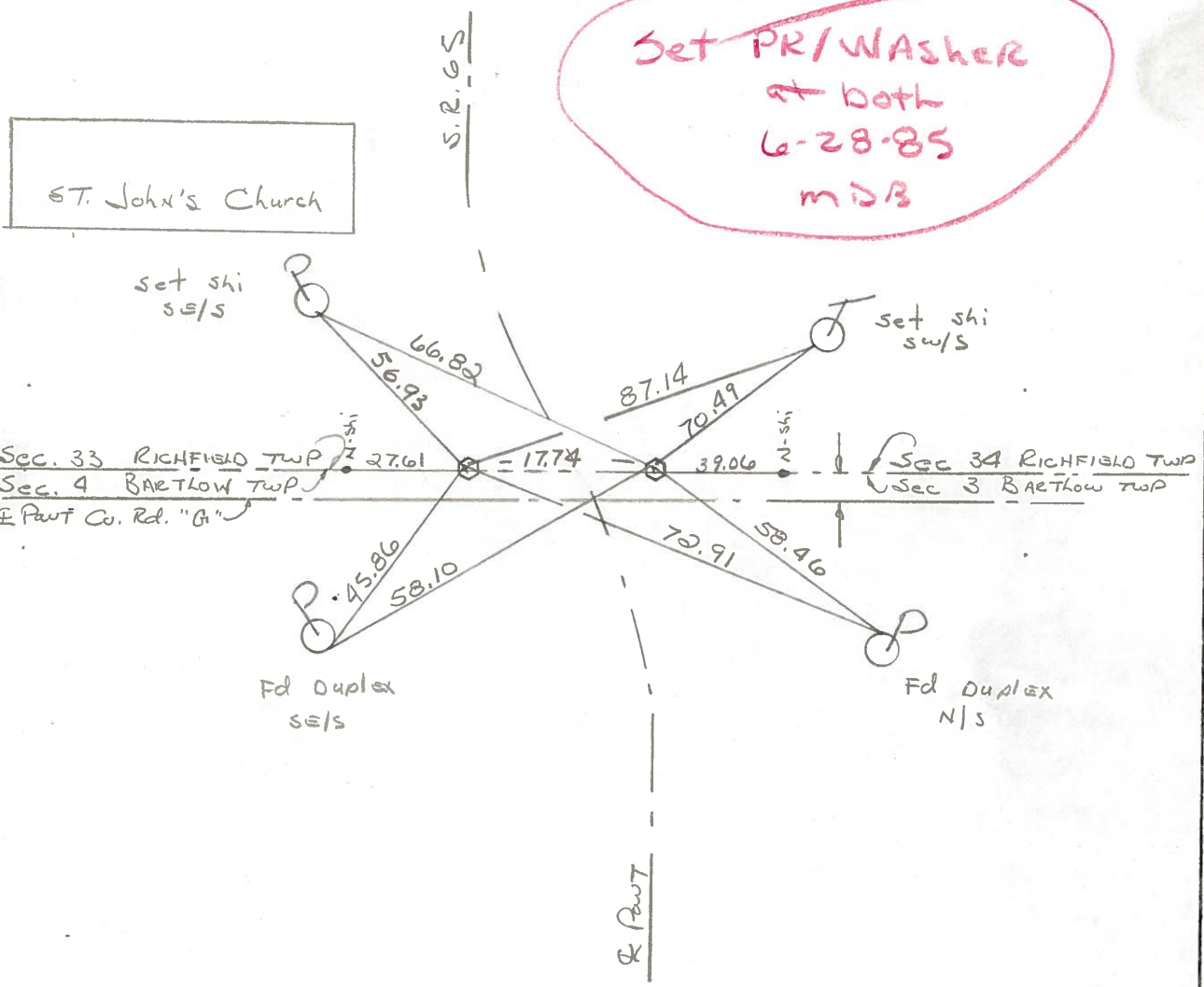
ON SURFACE - BELOW yes

LEFT - ~~PAV'T.~~ - RIGHT 10.6 L + 7.1 R.T.

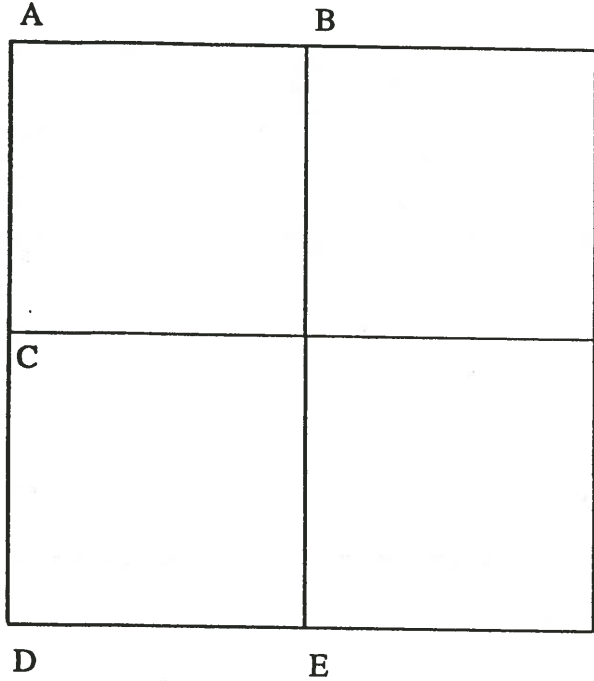
TO: EDGE PAVEMENT

S.L.M. 317+36

5' N. of & PAVT Rd "G" EAST



15



14

13A  
+3-8

COUNTY: HENRY

TOWNSHIP: RICHFIELD

T-4-N R-8-E

SECTION: 34

14

8/6/79 R.W., J.J., C.S.  
 C - Found recorded spike 1" below road surface. RR spike established by ODOT. Spike is on line and midway between SW Corner and NW Corner, Sec. 34.  
 18.13' W. to NE corner west bridge rail.  
 62.64' N.N.W. to shiner se/s power pole.  
 80.98' N.N.E. to shiner sw/s telephone pole.  
 18.22' E. to NW corner east bridge rail.  
 20.75' S.E. to SW corner east bridge rail.  
 70.88' S.S.E. to shiner nw/s telephone pole.  
 20.70' S.W. to SE corner west bridge rail.

8/24/88 R.W., S.K. Found baby RR spike.  
 19.88' N.W. to "+" NW wingwall. (P)  
 48.66' N.E. to duplex nw/s power pole.  
 19.29' E.N.E. to "+" NE wingwall. (P)  
 25.13' S.E. to "+" SE wingwall. (P)  
 25.10' S.W. to "+" SW wingwall. (P)

13A  
+3-8

8/2/79 R.W., J.J., G.M.  
 D - Found recorded RR spike over high point of stone (6"x10"x16") 15" below road surface. Also found wood stake on se/s stone and several small stones. Removed wood stake and small stones. Placed center punched RR spike on surface over high point of stone. Pk's 6' north and west. Stone is on the west edge 18' pavement.  
 45.85' S.S.W. to duplex e/s power pole.  
 57.24' N.N.W. to duplex e/s power pole.  
 88.81' N.E. to shiner sw/s telephone pole.  
 72.90' E.S.E. to duplex n/s power pole.  
 17.72' E. to NW corner, Sec. 3, Bartlow Twp.

8/24/88 R.W., S.K. Found Pk nail and shiner.  
 29.70' N.W. to "+" SE corner metal frame of catch basin grate. (P)  
 57.17' N.W. to duplex e/s power pole.  
 87.16' E.N.E. to shiner w/s telephone pole.  
 72.91' E.S.E. to duplex/s power pole.  
 35.38' S.W. to "+" SW corner catch basin. (P)

PERSONNEL	TITLE	PERSONNEL	TITLE
BURNSIDE			
SMITH			
BOWERS			
MEAD			

COUNTY HENRY DATE 11-25-74

S. R. 65 WEATHER CLOUDY

SEC. TEMP. +34°

DESCRIPTION	REF. TIES	SEC. COR.	TWP. LINE (RICHFIELD & BARTLOW)	JOB NO.
		LEFT	CENTER LINE	RIGHT

