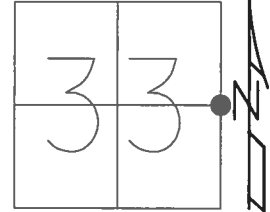


O.D.O.T. DISTRICT 2 SURVEY OFFICE (USE ONLY)

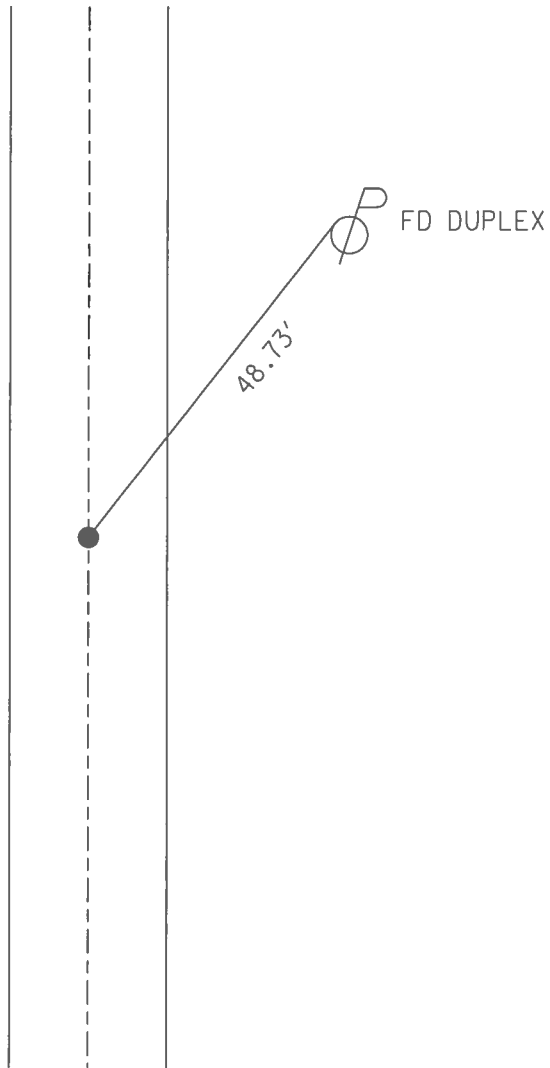
PERSONNEL _____ REFERENCE NO. 14 SHEET 17 OF 42
 NOTES BARNHISEL DATE 9/16/02 ROUTE SR 65
 H.C. CANTERBURY WEATHER SUNNY COUNTY HENRY
 R.C. BARNHISEL TEMP. 75° TOWNSHIP RICHFIELD
 _____ SECTION 33
 _____ T 4 N R 8 E

TYPE MONUMENT MON BOX
 ON SURFACE - ~~BELOW~~ ON
 LEFT - ☉ PAV'T - RIGHT ON
9.6' TO LT EDGE PAVEMENT
 S.L.M. 343+49



GRID: NORTHING: 584434.625 EASTING: 1572510.533

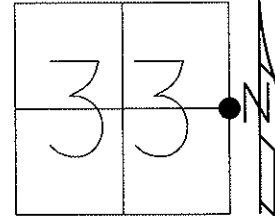
RECORD:
 R.R.SPIKE SET
 BY COUNTY ENGR.
 FD MONBOX
 9/16/02, DCH
 FD MONBOX
 7/10/12, MC
 FD MONBOX
 RECF14
 5/10/17, JFO
 SET MONBOX
 W/1" IPIN
 NEWREF14
 9/22/17, JFO



O.D.O.T. DISTRICT 2 SURVEY OFFICE (USE ONLY)

PERSONNEL _____ REFERENCE NO. 14 SHEET 17 OF 42
 NOTES BARNHEISEL DATE 09-16-02 ROUTE SR 65
 H.C. CANTERBURY WEATHER SUNNY COUNTY HENRY
 R.C. BARNHEISEL TEMP. 75° TOWNSHIP RICHFIELD
 _____ SECTION 33
 _____ T 4 N R 8 E

TYPE MONUMENT _____ MON BOX _____
 ON SURFACE - BELOW _____ ON _____
 LEFT - Q PAV'T - RIGHT _____ ON _____
9.6' TO LT EDGE PAVEMENT
 S.L.M. _____ 343+49
 Grid: Northing: 584434.646 Easting: 1572510.506

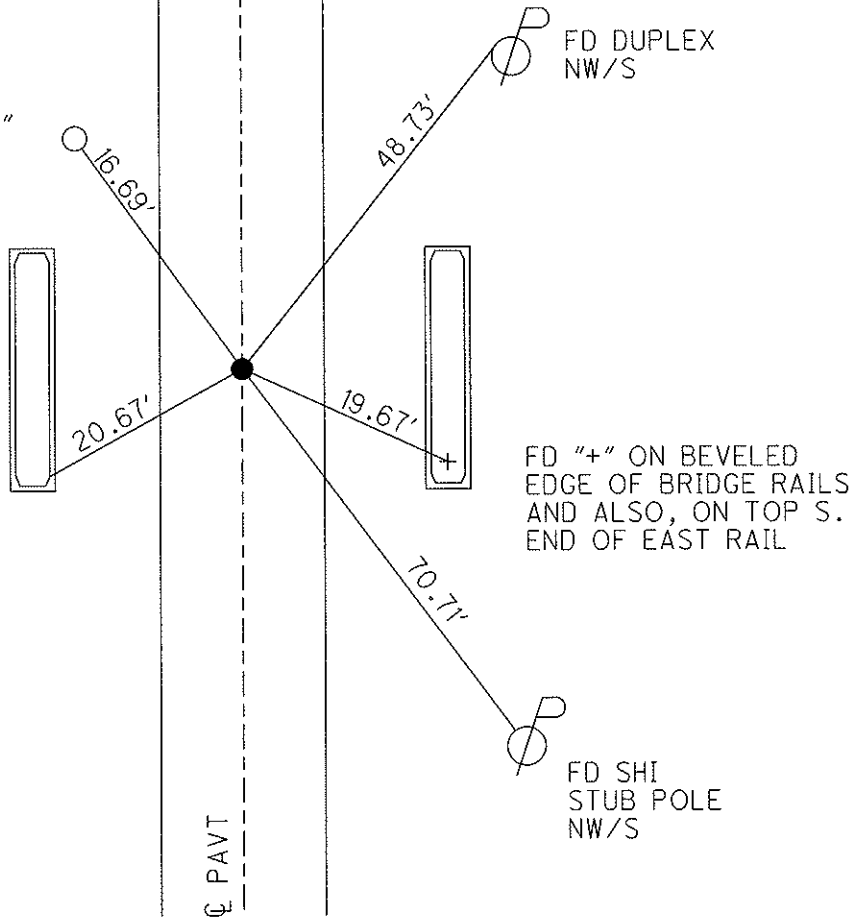


11-14-02 RESET MAG/WASHER, MB

07-10-12 GPS: REF 14
 FD MONBOX,
 03-14-13 GPS: FIN 14, MC

RAILROAD SPIKE SET BY HENRY CO
 ENGINEER'S OFFICE WAS REMOVED
 DURING PAVING PROJECT
 DATE: 09-16-02

NEAR SIDE OF 2"
 STEEL MB POST
 2' UP



FD "+" ON BEVELED
 EDGE OF BRIDGE RAILS
 AND ALSO, ON TOP S.
 END OF EAST RAIL

FD SHI
 STUB POLE
 NW/S

O.D.O.T. DISTRICT 2 SURVEY OFFICE

PERSONNEL _____

REFERENCE NO. 14

SHEET 15 OF 29

NOTES BARNHISEL - RC

H.C. CANTERBURY

R.C. _____

DATE 9-16-02

WEATHER SUNNY

TEMP. +75°

ROUTE 65

COUNTY HENRY

TOWNSHIP RICHFIELD

SECTION 33

T 4 N R 8 E

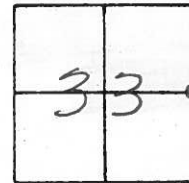
TYPE MONUMENT Sm RR Spk

~~ON~~ SURFACE - BELOW 1.5"

~~LEFT - &~~ PAV'T. - ~~RIGHT~~ YES

9.6' TO LT EDGE PAVEMENT

S.L.M. 343+49

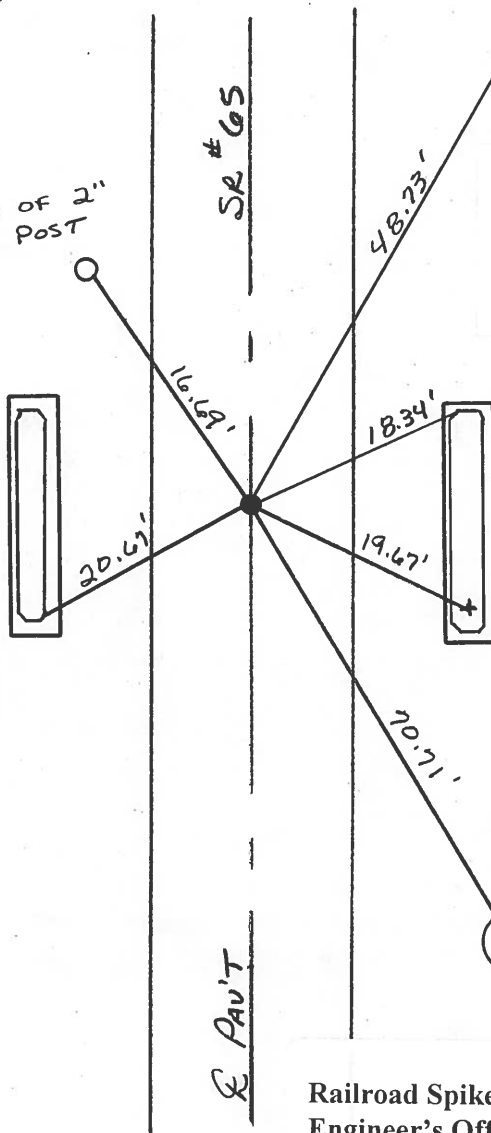


RESET MAG NAIL & WASHER

11-14-02

MB

NEAR SIDE OF 2" STEEL MB POST 2' up



Mag Nail Removed,
Railroad Spike Reset
Date _____

Fd "t" ON BEVELED
EDGE OF BRIDGE RAILS
AND ALSO ON TOP S.
END OF EAST RAIL

Railroad Spike Set by Henry Co.
Engineer's Office was Removed
During Paving Project
Date 9-16-02

O.D.O.T. DISTRICT 2 SURVEY OFFICE

PERSONNEL

REFERENCE NO. 14

SHEET 15 OF 18

NOTES BARNHISEL ✓

9-16-02

H.C. KUSZ MC

DATE 7-21-93

ROUTE SR. 65

R.C. BARNHISEL ✓

WEATHER SUNNY ✓

COUNTY HENRY

OTTO

TEMP. +80°F +75

TOWNSHIP RICHFIELD

SECTION 33

T 4 N R 8 E

TYPE MONUMENT SM. RR SPK. ✓

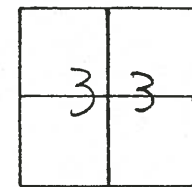
Removed

ON SURFACE - ~~BELOW~~ yes *1.5"*

~~LEFT - E PAV'T. - RIGHT~~ ON E ✓

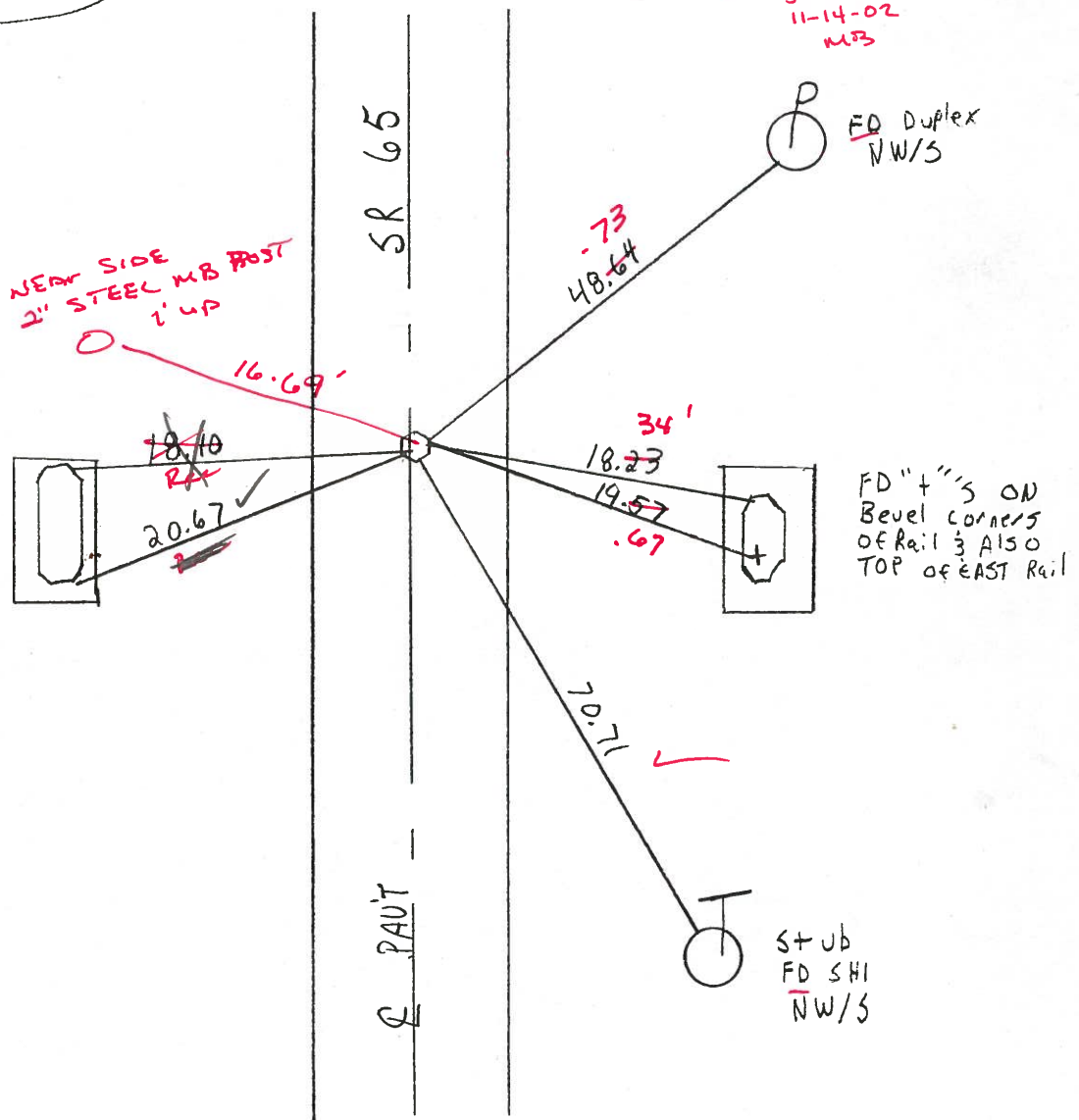
9.6' - 9.9' TO LT EDGE PAVEMENT

S.L.M. 344+85 *343+49*



Set P.K./WASHER
10-13-93
MOB

*Reset Mag Nail/Washer
11-14-02
MOB*



O.D.O.T. DISTRICT 2 SURVEY OFFICE

PERSONNEL

REFERENCE NO. 14

SHEET OF

NOTES Hoffman

H.C. BARNHISEL

R.C. LOHRKE

DATE 5-24-85

WEATHER clear

TEMP. 80°

ROUTE SR 65

COUNTY HENRY

TOWNSHIP RICHFIELD

SECTION 33

T4 NR 8 E

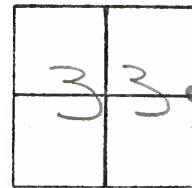
TYPE MONUMENT R.R. SPIKE

ON SURFACE - BELOW 1"

~~LEFT - & PAV'T. - RIGHT~~ ON E

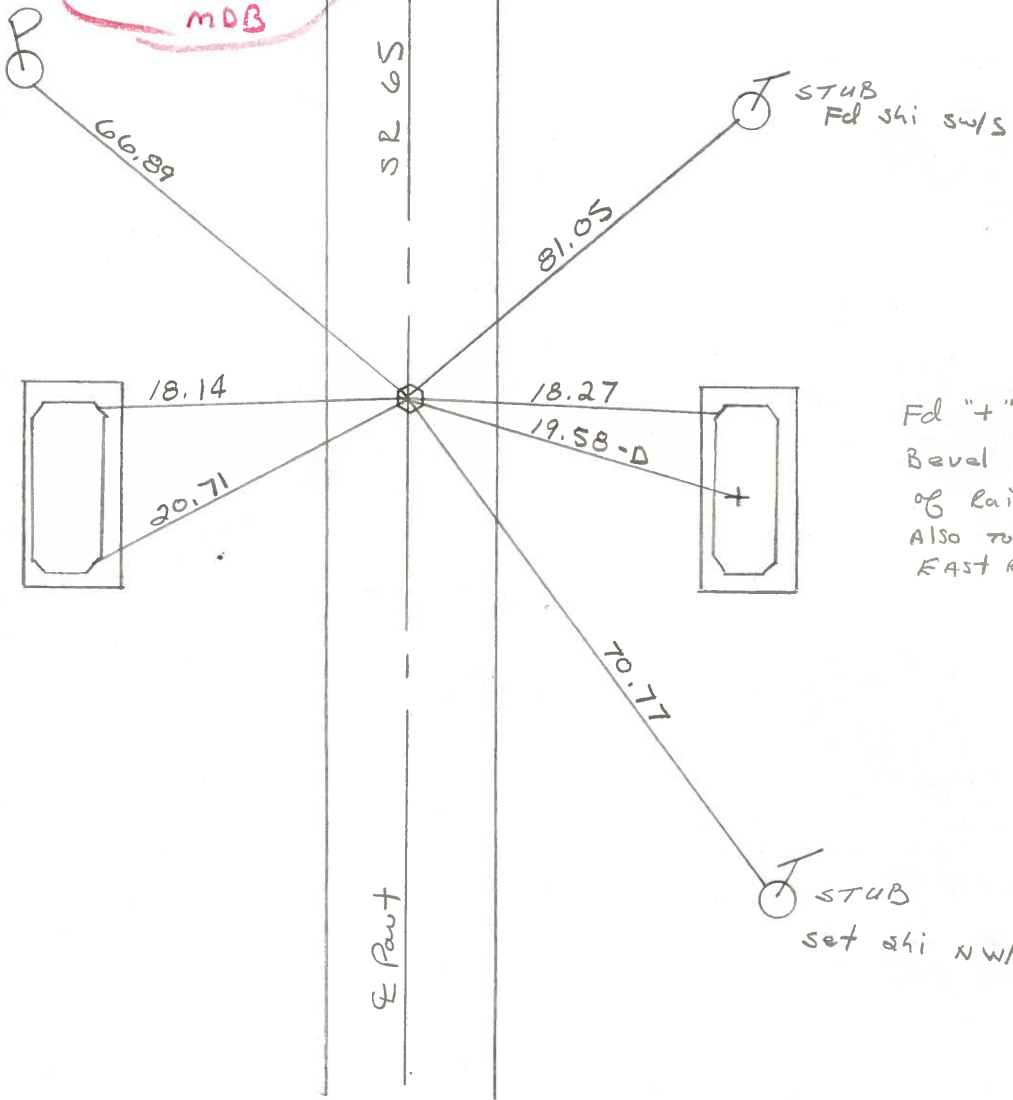
8.9' TO LT. EDGE PAVEMENT

S.L.M. 344 + 22

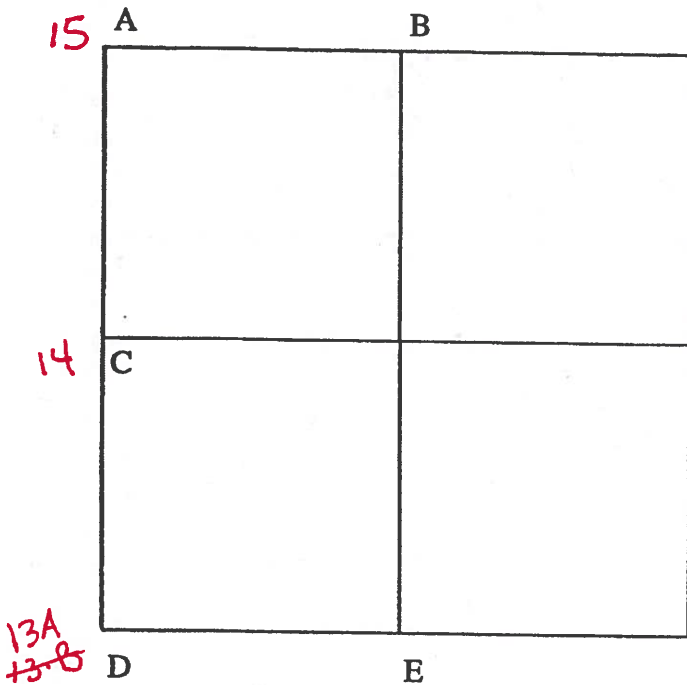


Set Sm/RR SPK
6-28-85
MDB

Set shi
S=1/3



Fd "+" 's on
Bevel CORNERS
of Rail &
Also top of
EAST Rail



COUNTY: HENRY

TOWNSHIP: RICHFIELD

T-4-N R-8-E

SECTION: 34

8/6/79 R.W., J.J., C.S.

- 14 C - Found recorded spike 1" below road surface. RR spike established by ODOT. Spike is on line and midway between SW Corner and NW Corner, Sec. 34.
- 18.13' W. to NE corner west bridge rail.
 - 62.64' N.N.W. to shiner se/s power pole.
 - 80.98' N.N.E. to shiner sw/s telephone pole.
 - 18.22' E. to NW corner east bridge rail.
 - 20.75' S.E. to SW corner east bridge rail.
 - 70.88' S.S.E. to shiner nw/s telephone pole.
 - 20.70' S.W. to SE corner west bridge rail.

8/24/88 R.W., S.K. Found baby RR spike.

- 19.88' N.W. to "+" NW wingwall. (P)
- 48.66' N.E. to duplex nw/s power pole.
- 19.29' E.N.E. to "+" NE wingwall. (P)
- 25.13' S.E. to "+" SE wingwall. (P)
- 25.10' S.W. to "+" SW wingwall. (P)

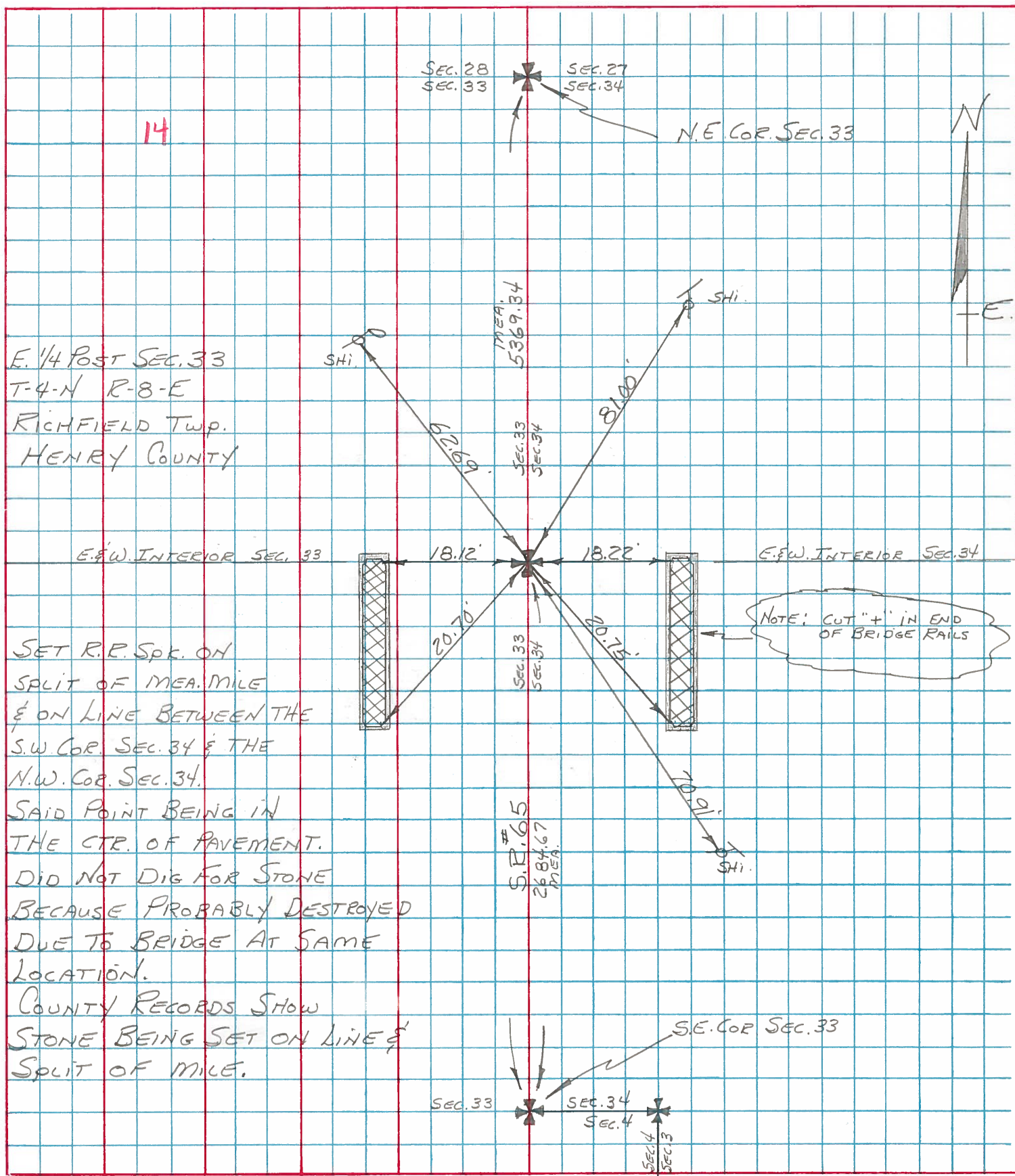
8/2/79 R.W., J.J., G.M.

- 13A D - Found recorded RR spike over high point of stone (6"x10"x16") 15" below road surface. Also found wood stake on se/s stone and several small stones. Removed wood stake and small stones. Placed center punched RR spike on surface over high point of stone. Pk's 6' north and west. Stone is on the west edge 18' pavement.
- 45.85' S.S.W. to duplex e/s power pole.
 - 57.24' N.N.W. to duplex e/s power pole.
 - 88.81' N.E. to shiner sw/s telephone pole.
 - 72.90' E.S.E. to duplex n/s power pole.
 - 17.72' E. to NW corner, Sec. 3, Bartlow Twp.

8/24/88 R.W., S.K. Found Pk nail and shiner.

- 29.70' N.W. to "+" SE corner metal frame of catch basin grate. (P)
- 57.17' N.W. to duplex e/s power pole.
- 87.16' E.N.E. to shiner w/s telephone pole.
- 72.91' E.S.E. to duplex/s power pole.
- 35.38' S.W. to "+" SW corner catch basin. (P)

PERSONNEL BURNSIDE TITLE _____ PERSONNEL SMITH TITLE _____ COUNTY HENRY DATE 12-11-74
 PERSONNEL BOWERS TITLE _____ S. R. 65 WEATHER CLOUDY
 PERSONNEL MEAD TITLE _____ SEC. 33 RICHFIELD Twp. TEMP. +32°
 DESCRIPTION LOCATE & REFERENCE SECTION CORNER JOB NO. _____



E. 1/4 Post SEC. 33
 T-4-N R-8-E
 RICHFIELD Twp.
 HENRY COUNTY

E. & W. INTERIOR SEC. 33 18.12' 18.22' E. & W. INTERIOR SEC. 34

SET R.P. Spk. ON
 SPLIT OF MEA. MILE
 & ON LINE BETWEEN THE
 S.W. COR. SEC. 34 & THE
 N.W. COR. SEC. 34.
 SAID POINT BEING IN
 THE CTR. OF PAVEMENT.
 DID NOT DIG FOR STONE
 BECAUSE PROBABLY DESTROYED
 DUE TO BRIDGE AT SAME
 LOCATION.
 COUNTY RECORDS SHOW
 STONE BEING SET ON LINE &
 SPLIT OF MILE.

NOTE: CUT "+" IN END
 OF BRIDGE RAILS