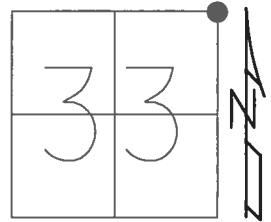


O.D.O.T. DISTRICT 2 SURVEY OFFICE (USE ONLY)

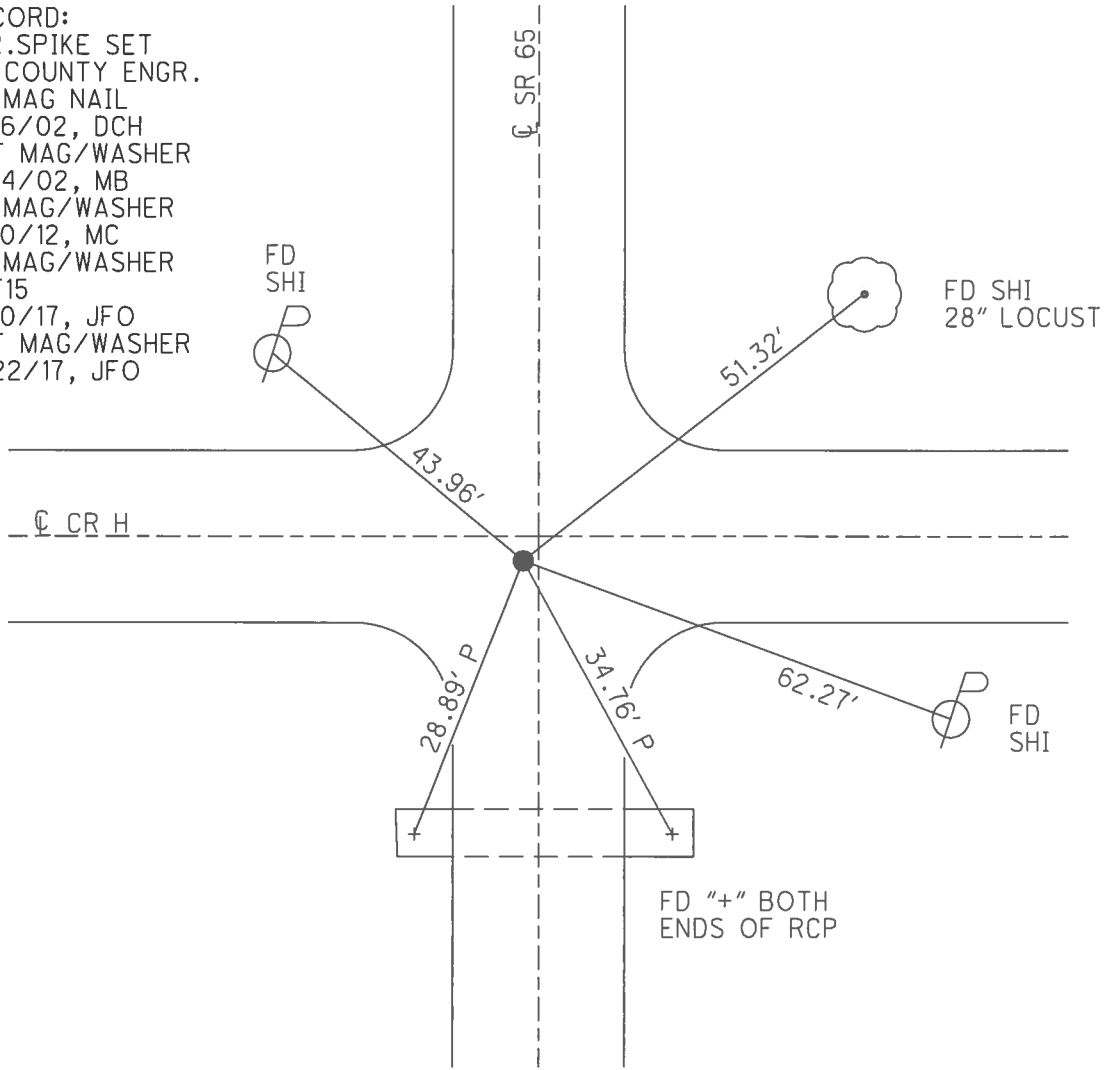
PERSONNEL _____ REFERENCE NO. 15 SHEET 18 OF 42
 NOTES RHOADES DATE 5/8/17 ROUTE SR 65
 H.C. O'DONNELL WEATHER SUNNY COUNTY HENRY
 R.C. RHOADES TEMP. 37° TOWNSHIP RICHFIELD
 _____ SECTION 33
 _____ T 4 N R 8 E

TYPE MONUMENT MAG/WASHER
 ON SURFACE - ~~BELOW~~ ON _____
 LEFT - ☉ PAV'T - ~~RIGHT~~ 0.5', 3.5' S.OF ☉ E.
 _____ TO _____ EDGE PAVEMENT
 S.L.M. 370+38



GRID: NORTHING: 587119.228 EASTING: 1572528.191

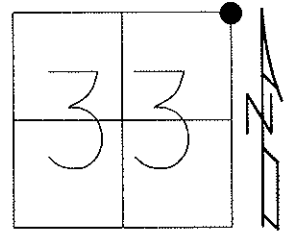
RECORD:
 R.R.SPIKE SET
 BY COUNTY ENGR.
 FD MAG NAIL
 9/16/02, DCH
 SET MAG/WASHER
 11/14/02, MB
 FD MAG/WASHER
 7/10/12, MC
 FD MAG/WASHER
 REF15
 5/10/17, JFO
 SET MAG/WASHER
 9/22/17, JFO



O.D.O.T. DISTRICT 2 SURVEY OFFICE (USE ONLY)

PERSONNEL	REFERENCE NO. <u>15</u>	SHEET <u>18</u> OF <u>42</u>
NOTES <u>BARNHEISEL</u>	DATE <u>9/16/02</u>	ROUTE <u>SR 65</u>
H.C. <u>CANTERBURY</u>	WEATHER <u>SUNNY</u>	COUNTY <u>HENRY</u>
R.C. <u>BARNHEISEL</u>	TEMP. <u>75°</u>	TOWNSHIP <u>RICHFIELD</u>
		SECTION <u>33</u>
		T <u>4</u> N R <u>8</u> E

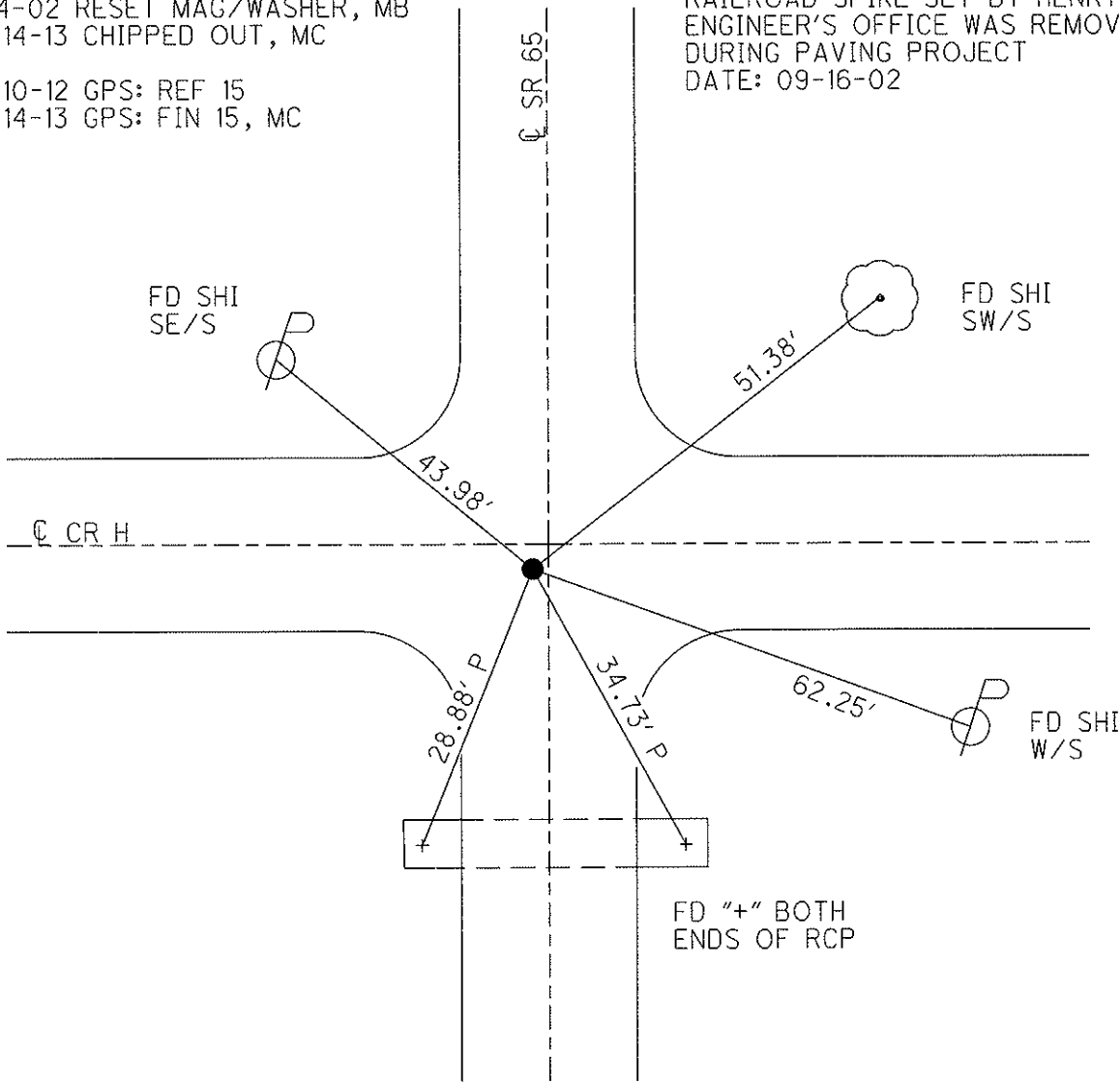
TYPE MONUMENT MAG NAIL
 ON SURFACE - ~~BELOW~~ ON _____
 LEFT - Q PAV'T - ~~RIGHT~~ 0.5', (3.5' S.OF Q EAST)
 _____ TO _____ EDGE PAVEMENT
 S.L.M. 370+38



Grid: Northing: 587119.241 Easting: 1572528.151

11-14-02 RESET MAG/WASHER, MB
 03-14-13 CHIPPED OUT, MC
 07-10-12 GPS: REF 15
 03-14-13 GPS: FIN 15, MC

RAILROAD SPIKE SET BY HENRY CO
 ENGINEER'S OFFICE WAS REMOVED
 DURING PAVING PROJECT
 DATE: 09-16-02



O.D.O.T. DISTRICT 2 SURVEY OFFICE

PERSONNEL _____

REFERENCE NO. 15

SHEET 16 OF 29

NOTES BARNHISEL RC

H.C. CANTERBURY

R.C. _____

DATE 9-16-02

WEATHER SUNNY

TEMP. +75°

ROUTE 65

COUNTY HENRY

TOWNSHIP RICHFIELD

SECTION 33

T 4 N R 8 E

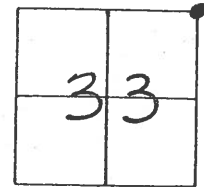
TYPE MONUMENT PK/WASHER

ON SURFACE - BELOW YES

LEFT-☐ PAU'T. - RIGHT 0.5'

— TO — EDGE PAVEMENT

S.L.M. 370+38 3.5' SOUTH OF ☐ EAST



Reset mag NAIL & WASHER

11-14-02
MB

Mag Nail Removed,
Railroad Spike Reset
Date _____

#65
SR

⊙ Fd Shi
SEIS

43.98'

⊙ 30" WALNUT
Fd Shi
SWIS

51.38'

☐ PAU'T

Co. Rd. "H"

28.88'-P

62.25'

34.73'-P

⊙ SET Shi
W/S

Fd 7" BOTH ENDS OF
R.C.P.

☐ PAU'T

Railroad Spike Set by Henry Co.
Engineer's Office was Removed
During Paving Project
Date 9-16-02

O.D.O.T. DISTRICT 2 SURVEY OFFICE

PERSONNEL

REFERENCE NO. 15

SHEET 10 OF 18

NOTES BARNHISEL ✓

9-16-02

H.C. KUSZ MC

DATE 7-21-93

ROUTE S.R. 65

R.C. BARNHISEL ✓

WEATHER SUNNY ✓

COUNTY Henry

OTTO

TEMP. +79° F +75

TOWNSHIP Richfield

SECTION 33

T 4 N R 8 E

TYPE MONUMENT P.K. + WASHER ✓

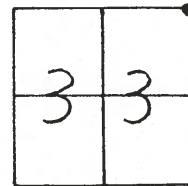
REMOVED

ON SURFACE - BELOW YES ✓

LEFT- & PAV'T. - RIGHT 0.5 ✓

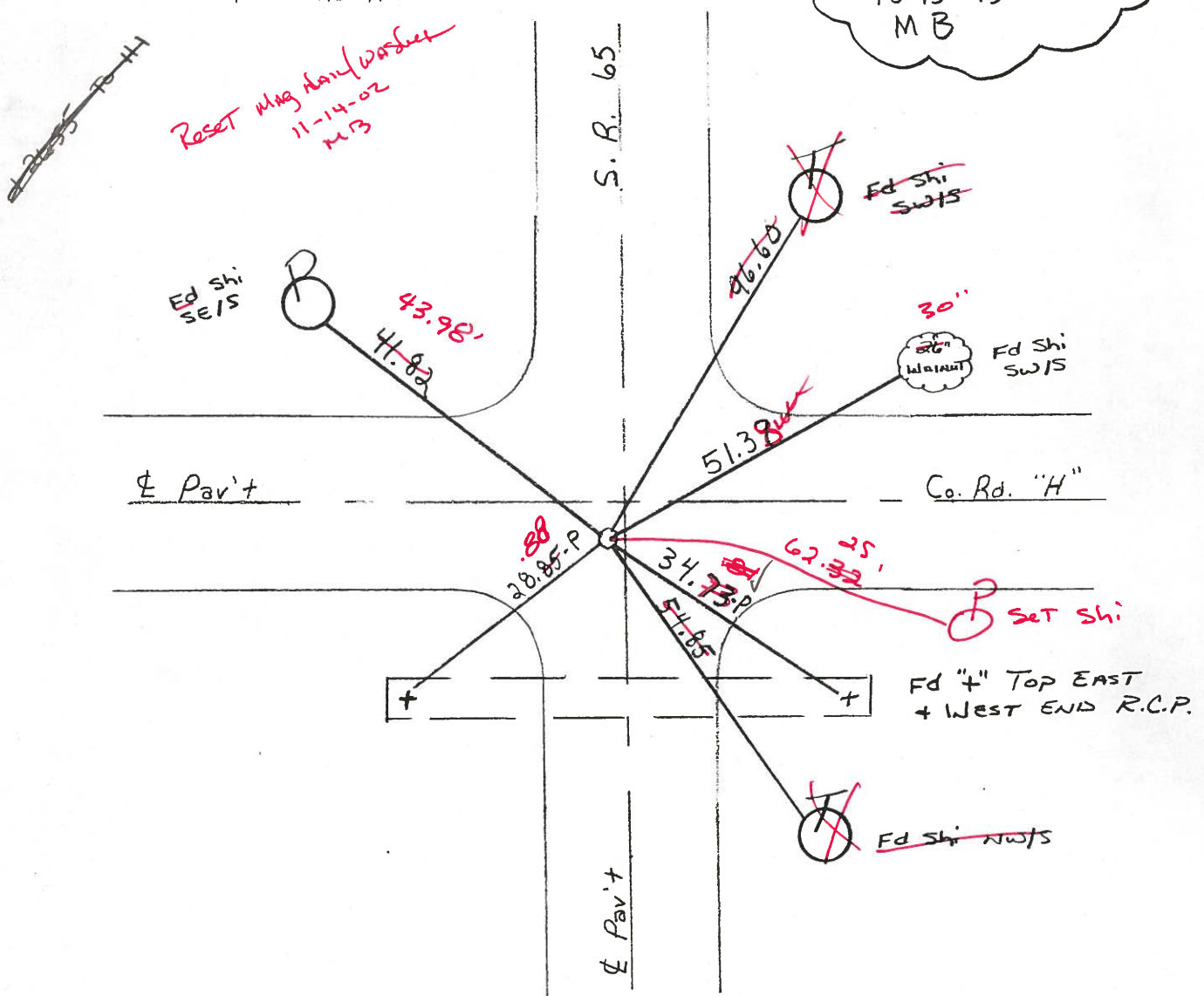
9.2 TO 4 EDGE PAVEMENT

S.L.M. 371+74 370+38



3' S. of & pav't Rd "H" east ✓

RESET PK & WASHER
10-13-93
MB



O.D.O.T. DISTRICT 2 SURVEY OFFICE

PERSONNEL

REFERENCE NO. 15

SHEET OF

NOTES Hoffman

H.C. BARNHISEL

R.C. LOENRKE

DATE 5-24-85

WEATHER CLEAR

TEMP. 80°

ROUTE SR 65

COUNTY HENRY

TOWNSHIP RICHFIELD

SECTION 33

T4 N R 8 E

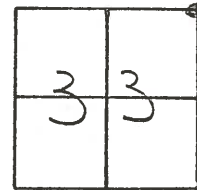
TYPE MONUMENT R.R. spike

ON SURFACE - BELOW yes

LEFT- & PAV'T. - RIGHT 0.5

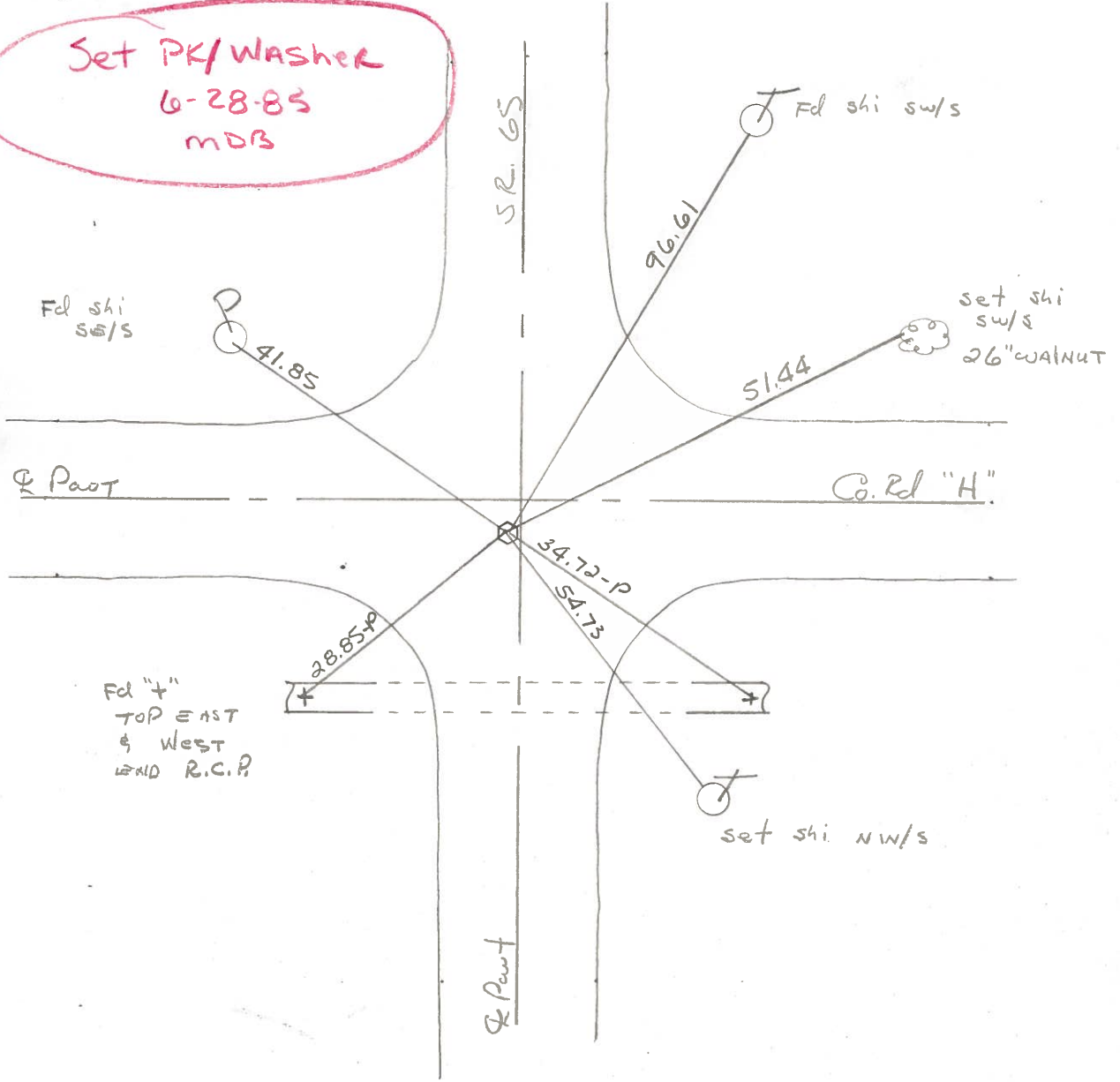
TO: EDGE PAVEMENT

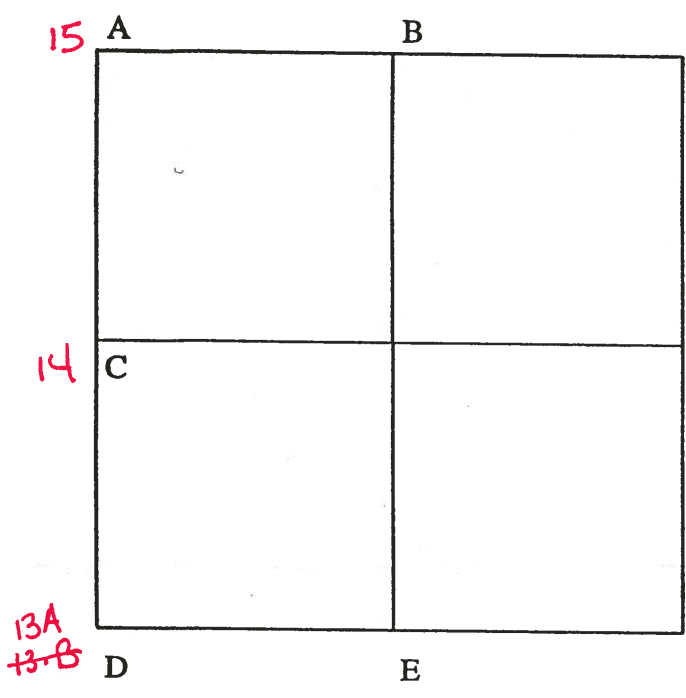
S.L.M. 371 + 07



3' S. of & part Rd "H" EAST

Set PK/Washer
6-28-85
MDB





COUNTY: HENRY

TOWNSHIP: RICHFIELD

T-4-N R-8-E

SECTION: 34

8/1/79 R.W., J.J., C.S.

15 A - Found recorded iron pipe over top center of stone (10"x10"x7") 12" below road surface. Removed iron pipe. Placed center punched RR spike on surface over top center of stone. Pk's 6' north and west. Stone is 8.2' east of west edge 18' pavement.
 41.85' N.W. to shiner se/s power pole.
 42.34' N.E. to iron pin.
 51.51' E.N.E. to shiner w/s 24" walnut. GONE
 96.59' N.N.E. to shiner s/s telephone pole.
 20.74' S.E. to NW corner conc. bridge rail. GONE
 91.64' S.S.E. to shiner nw/s 14" walnut.

7/24/88 R.W., K.A. Found Pk nail and shiner.

41.82' N.W. to shiner se/s power pole.
 51.41' N.E. to shiner sw/s walnut tree.
 34.72' S.E. to "+" east end RCP. (P)
 28.85' S.W. to "+" west end RCP. (P)

10/26/79 R.W., J.J., C.S.

B - Found stone (6"x17"x19") 10" below grade. Found iron pipe 4.3' east and 1.1' south of stone. Removed iron pipe. Placed center punched RR spike on surface over high point of stone. Pk's 6' north and east. Stone is 2.5' north of south edge 16' pavement.
 21.99' N.E. to 5/8" iron pin at north edge of pavement.
 22.32' N.E. to 5/8" iron pin at north edge of pavement.
 55.00' S.E. to duplex n/s clump of 8" walnut trees. GONE

8/24/88 R.W., S.K.

21.99' N.W. to 5/8" iron pin 1' north of edge of pavement.
 22.34' N.E. to 5/8" iron pin 1' north of edge of pavement.

PERSONNEL	TITLE	PERSONNEL	TITLE
BURNSIDE			
SMITH			
BOWERS			
MEAD			

COUNTY HENRY DATE 11-18-74
 S. R. 65 WEATHER CLEAR
 SEC. N.E. COR. SEC. 33 TEMP. +58°

DESCRIPTION REF. TO SECTION CORNER JOB NO. _____

