

O.D.O.T. DISTRICT 2 SURVEY OFFICE (USE ONLY)

PERSONNEL _____ REFERENCE NO. 16 SHEET 19 OF 42

NOTES	<u>RHOADES</u>	DATE	<u>5/8/17</u>	ROUTE	<u>SR 65</u>
H.C.	<u>O'DONNELL</u>	WEATHER	<u>SUNNY</u>	COUNTY	<u>HENRY</u>
R.C.	<u>RHOADES</u>	TEMP.	<u>44°</u>	TOWNSHIP	<u>RICHFIELD</u>
				SECTION	<u>28</u>
				T	<u>4</u> N
				R	<u>8</u> E

TYPE MONUMENT MAG/WASHER

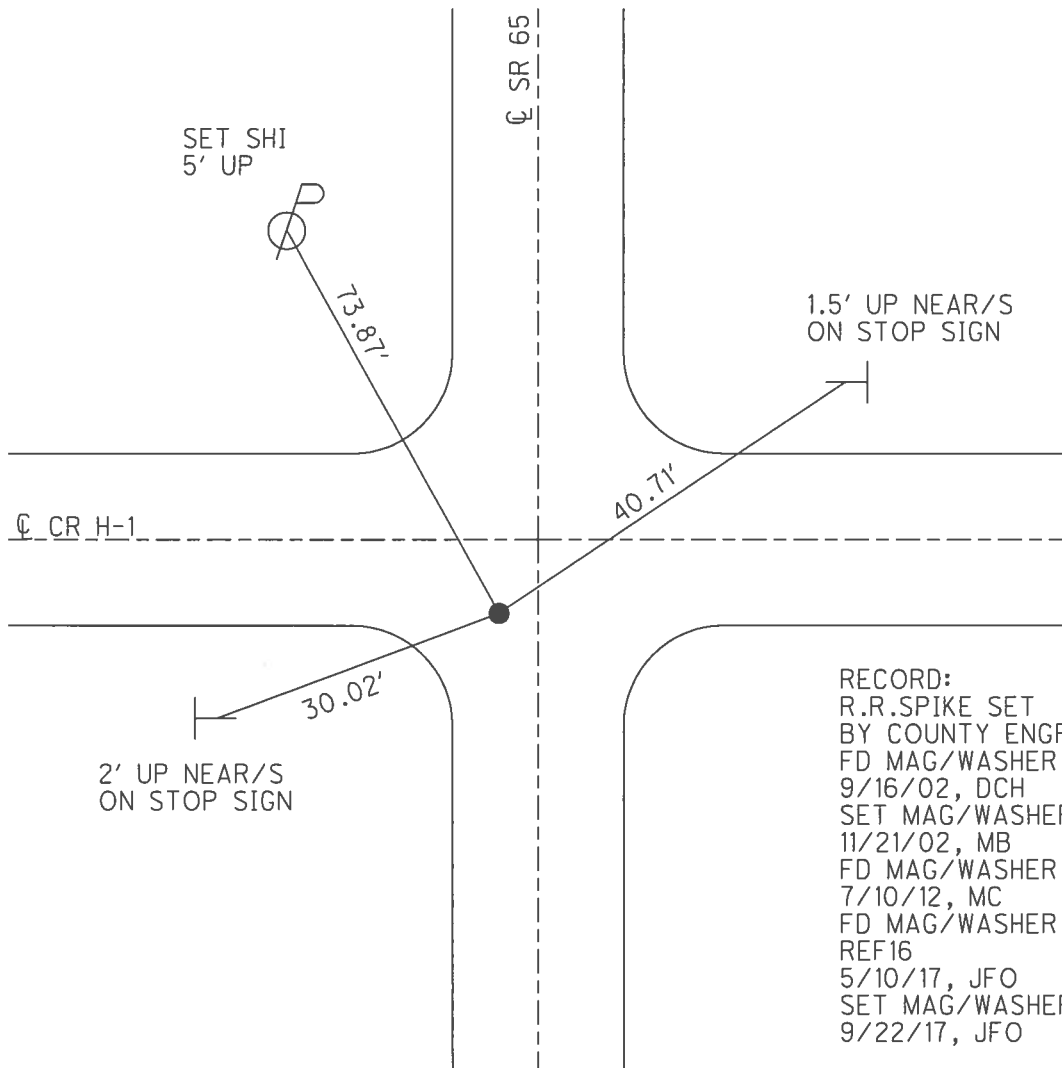
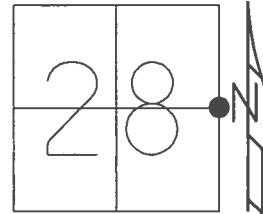
ON SURFACE - ~~BELOW~~ ON _____

LEFT - ☉ PAV'T - ~~RIGHT~~ 3.0', 8' S. OF ☉ E.

6.6' TO LT EDGE PAVEMENT

S.L.M. 396+93

GRID: NORTHING: 589778.623 EASTING: 1572539.737



RECORD:
 R.R.SPIKE SET
 BY COUNTY ENGR.
 FD MAG/WASHER
 9/16/02, DCH
 SET MAG/WASHER
 11/21/02, MB
 FD MAG/WASHER
 7/10/12, MC
 FD MAG/WASHER
 REF16
 5/10/17, JFO
 SET MAG/WASHER
 9/22/17, JFO

O.D.O.T. DISTRICT 2 SURVEY OFFICE (USE ONLY)

PERSONNEL _____

REFERENCE NO. 16

SHEET 19 OF 42

NOTES BARNHISEL

DATE 9/16/02

ROUTE SR 65

H.C. CANTERBURY

WEATHER SUNNY

COUNTY HENRY

R.C. BARNHISEL

TEMP. 75°

TOWNSHIP RICHFIELD

SECTION 28

T 4 N R 8 E

TYPE MONUMENT MAG / WASHER

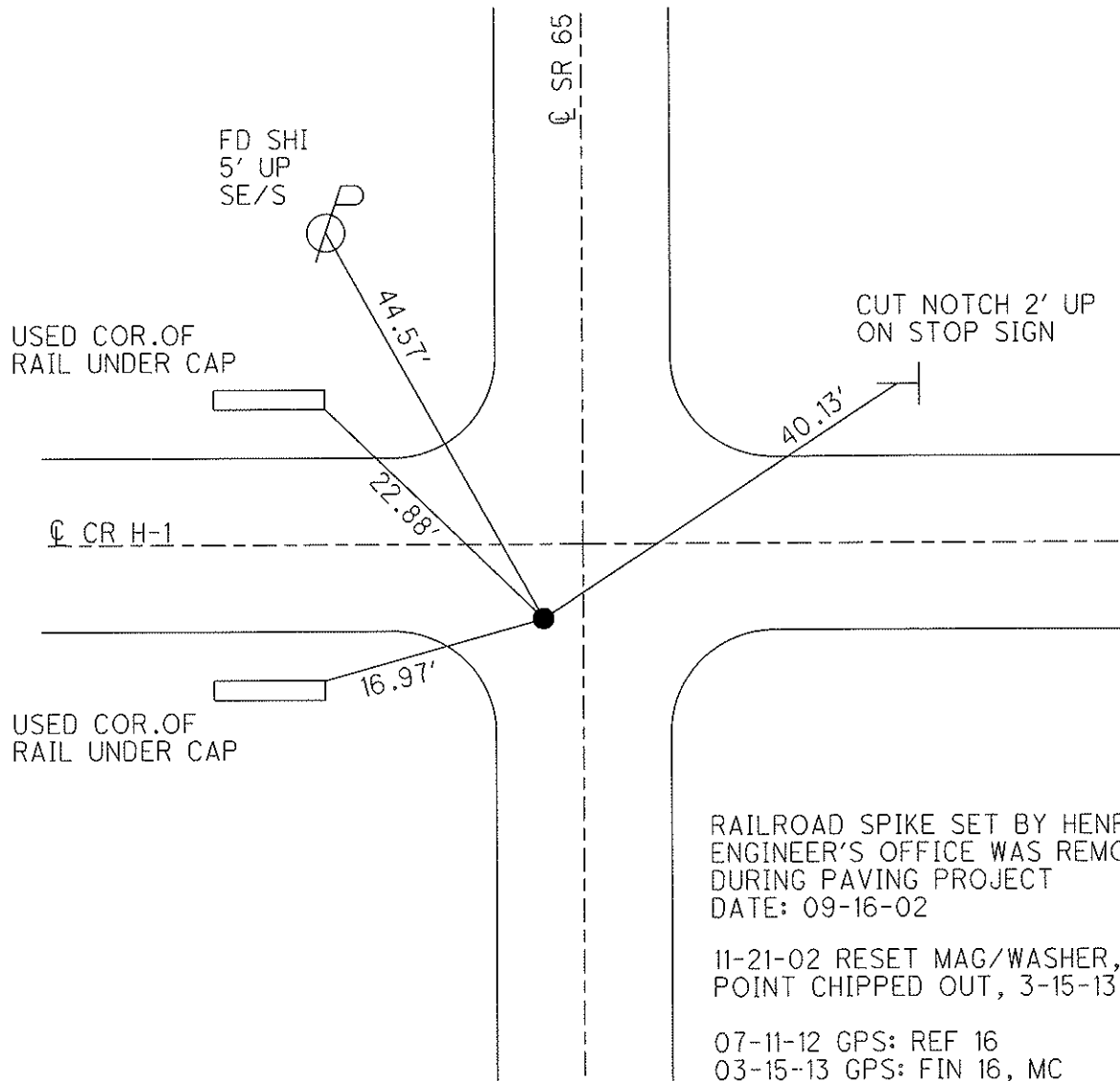
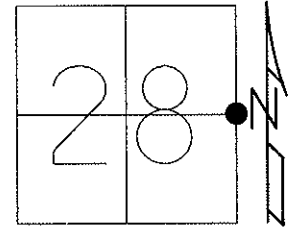
ON SURFACE - ~~BELOW~~ ON _____

LEFT - ☉ PAV'T - ~~RIGHT~~ 3.0', (8' SOUTH OF ☉ EAST)

6.6' TO LT EDGE PAVEMENT

S.L.M. 396+93

Grid: Northing: 589778.659 Easting: 1572539.748



RAILROAD SPIKE SET BY HENRY CO ENGINEER'S OFFICE WAS REMOVED DURING PAVING PROJECT DATE: 09-16-02

11-21-02 RESET MAG/WASHER, MB POINT CHIPPED OUT, 3-15-13

07-11-12 GPS: REF 16
03-15-13 GPS: FIN 16, MC

O.D.O.T. DISTRICT 2 SURVEY OFFICE

PERSONNEL

REFERENCE NO. 16

SHEET 17 OF 29

NOTES BARNHISEL RC

H.C. CANTERBURY

R.C. _____

DATE 9-16-02

WEATHER SUNNY

TEMP. +75°

ROUTE 65

COUNTY HENRY

TOWNSHIP RICHFIELD

SECTION 28

T 4 N R 8 E

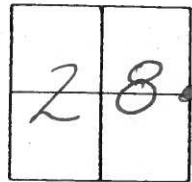
TYPE MONUMENT PK & WASHER

ON SURFACE - ~~BELOW~~ yes

LEFT - PAV'T. - RIGHT 3.0'

6.6' TO LT EDGE PAVEMENT

S.L.M. 396+93 8' SOUTH OF E EAST



Reset Mag Nail & Washer

11-21-02
MB

SR #65

Mag Nail Removed,
Railroad Spike Reset
Date _____

USED CORNER OF
RAIL UNDER CAP

CONC. RAIL

P
F₅ sh.
up
SEIS

44.57'

22.88'

CUT NOTCH
2' up ON "STOP
SIGN"

E PAV'T
(DIRT Rd)

40.13'

Co. Rd. "H-1"

CONC. RAIL

16.97'

USED CORNER OF
RAIL UNDER CAP

E PAV'T

Railroad Spike Set by Henry Co.
Engineer's Office was Removed
During Paving Project
Date 9-16-02

O.D.O.T. DISTRICT 2 SURVEY OFFICE

PERSONNEL

REFERENCE NO. 16

SHEET 17 OF 18

NOTES BARNHISEL ✓

9-16-02

H.C. KHSZ mc

DATE 7-21-93

ROUTE S.R. 65

R.C. BARNHISEL ✓

WEATHER SUNNY ✓

COUNTY Henry

OTTO

TEMP. +74°F +75

TOWNSHIP Richfield

SECTION 28

T4 NR 8 E

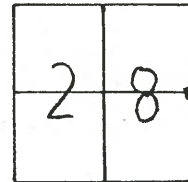
TYPE MONUMENT P.K. + WASHER ✓ Removed

ON SURFACE - BELOW yes ✓

LEFT-€ PAV'T. - RIGHT 26' 3.0'

6.6' 7.5 TO LT. EDGE PAVEMENT 396+93

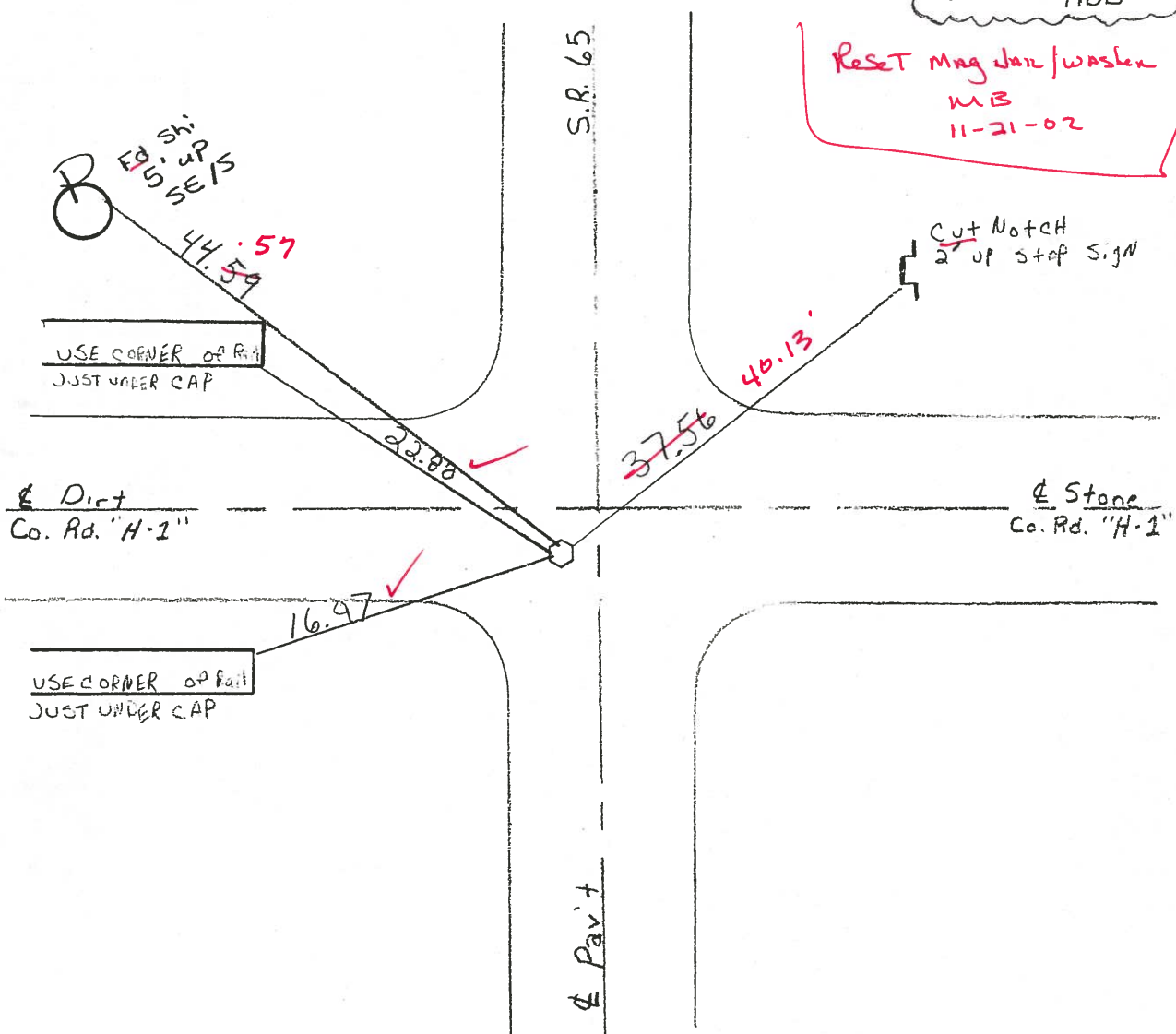
S.L.M. 398+40 398+29 397+04



8' S of € Rd H-1 EAST ✓

SET P.K. & WASHER
10-13-93 MDB

RESET Mag Jan Washer
MB
11-21-02



O.D.O.T. DISTRICT 2 SURVEY OFFICE

PERSONNEL _____

REFERENCE NO. 16

SHEET _____ OF _____

NOTES HOFFMAN

H.C. BARNHISEK

R.C. LOENRKE

DATE 5-24-85

WEATHER clear

TEMP. 80°

ROUTE SR 65

COUNTY HENRY

TOWNSHIP RICHFIELD

SECTION 28

T4 NR 8 E

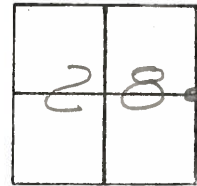
TYPE MONUMENT R.R. SPIKE

ON SURFACE - BELOW yes

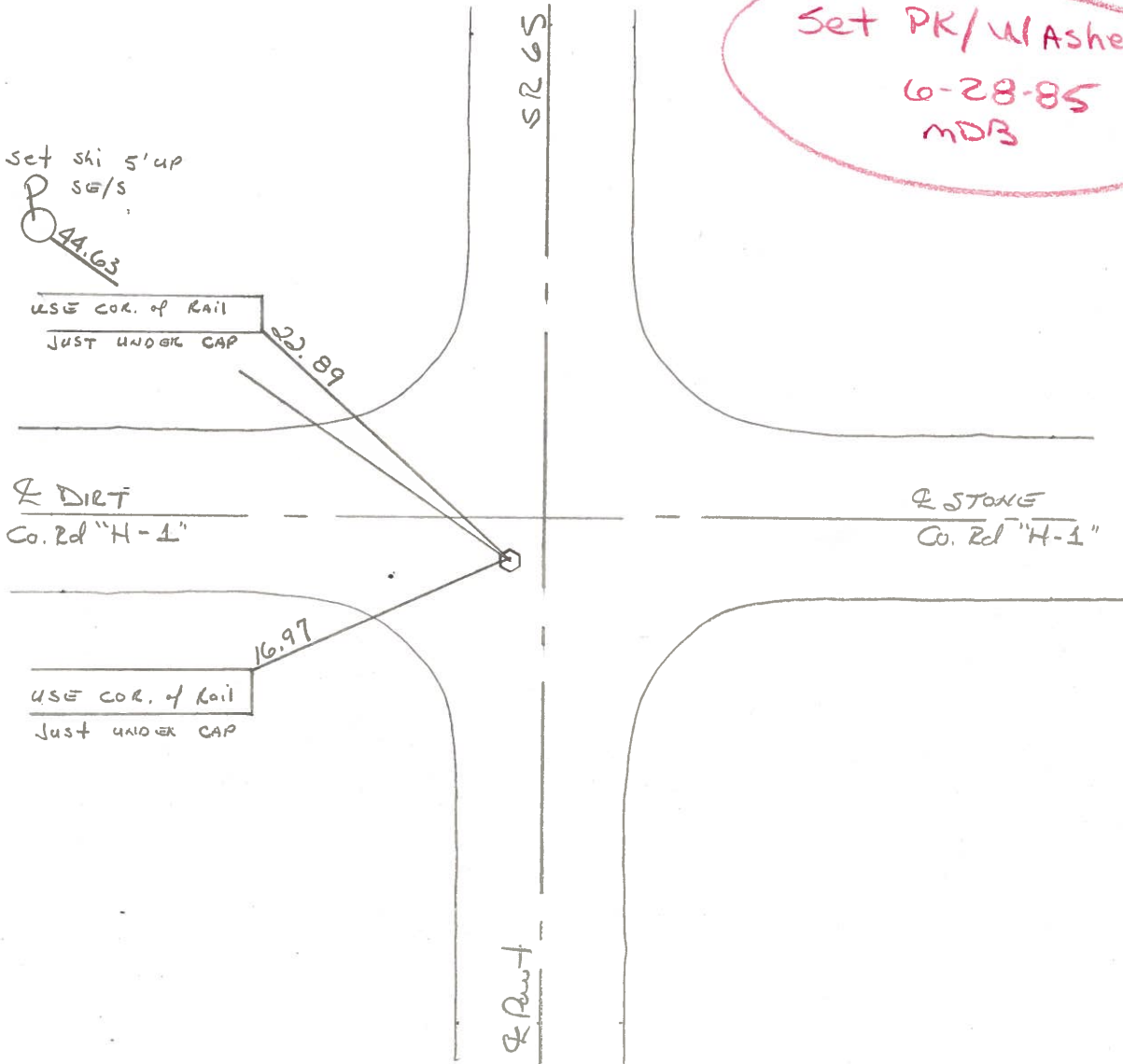
LEFT- & PAV'T. - RIGHT 2.7'

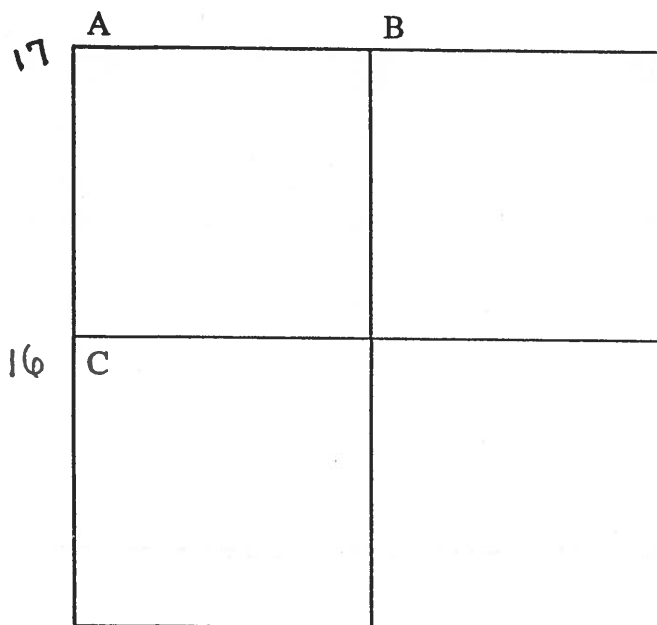
7.0' TO LT EDGE PAVEMENT

S.L.M. 397 + 66



6' S. of & Rd H-1 EAST





COUNTY: HENRY

TOWNSHIP: RICHFIELD

T-4-N R-8-E

SECTION: 27

8/2/79 R.W., J.J., G.M.

16 C - Found recorded RR spike. Searched for stone but did not locate. RR spike is midway between NW corner and SW corner, Sec. 27. Placed center punched RR spike on surface. RR spike is 7' east of west edge 18' pavement.

22.88' N.W. to SE corner north bridge rail.

79.91' N.N.E. to shiner sw/s telephone pole.

54.42' S.S.E. to "+" NW corner catch basin. (P)

83.90' S.S.E. to shiner nw/s telephone pole.

16.94' W.S.W. to NE corner south bridge rail.

8/1/88 R.W., S.K.

Found Pk nail and shiner.

22.88' N.E. to SE corner of north banister.

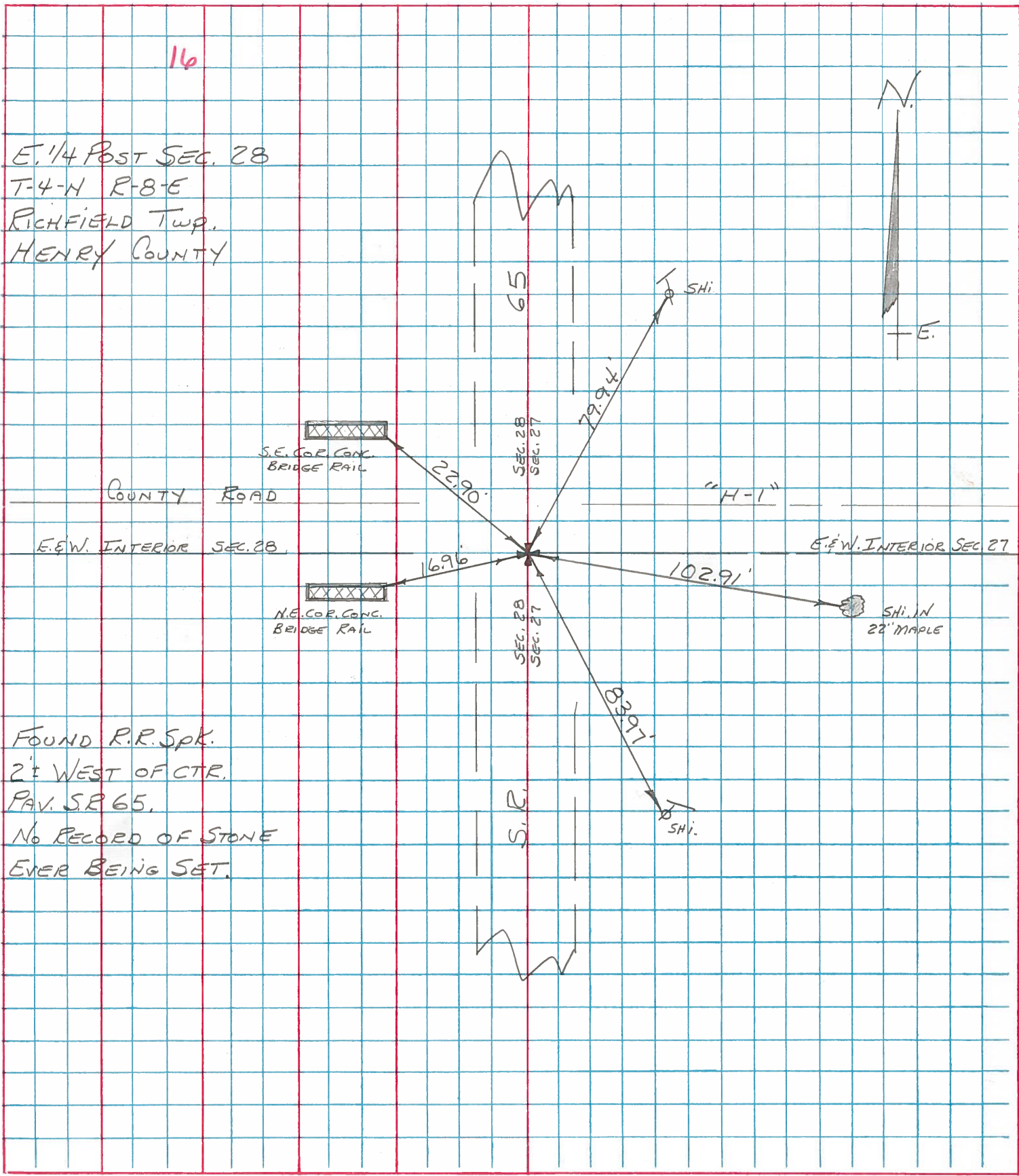
55.78' S.S.E. to "+" east end of conc. pipe. (P)

16.95' W.S.W. to NE corner of south banister.

PERSONNEL	TITLE	PERSONNEL	TITLE
BURNSIDE			
SMITH			
BOWERS			
MEAD			

COUNTY HENRY DATE 11-25-74
 S. R. 65 WEATHER CLOUDY
 (RICHFIELD TWP.)
 SEC. E 1/4 Post SEC. 28 TEMP. +34°

DESCRIPTION REF. TO SEC CORNER LEFT CENTER LINE RIGHT JOB NO.



PERSONNEL	TITLE	PERSONNEL	TITLE
Smith			
Bowers			
Mead			

COUNTY Henry DATE 4-18-1974
 S. R. 65 WEATHER Clear-Warm
 SEC. Richfield Twp. TEMP. 65°

DESCRIPTION ± Controls Ties JOB NO. _____

