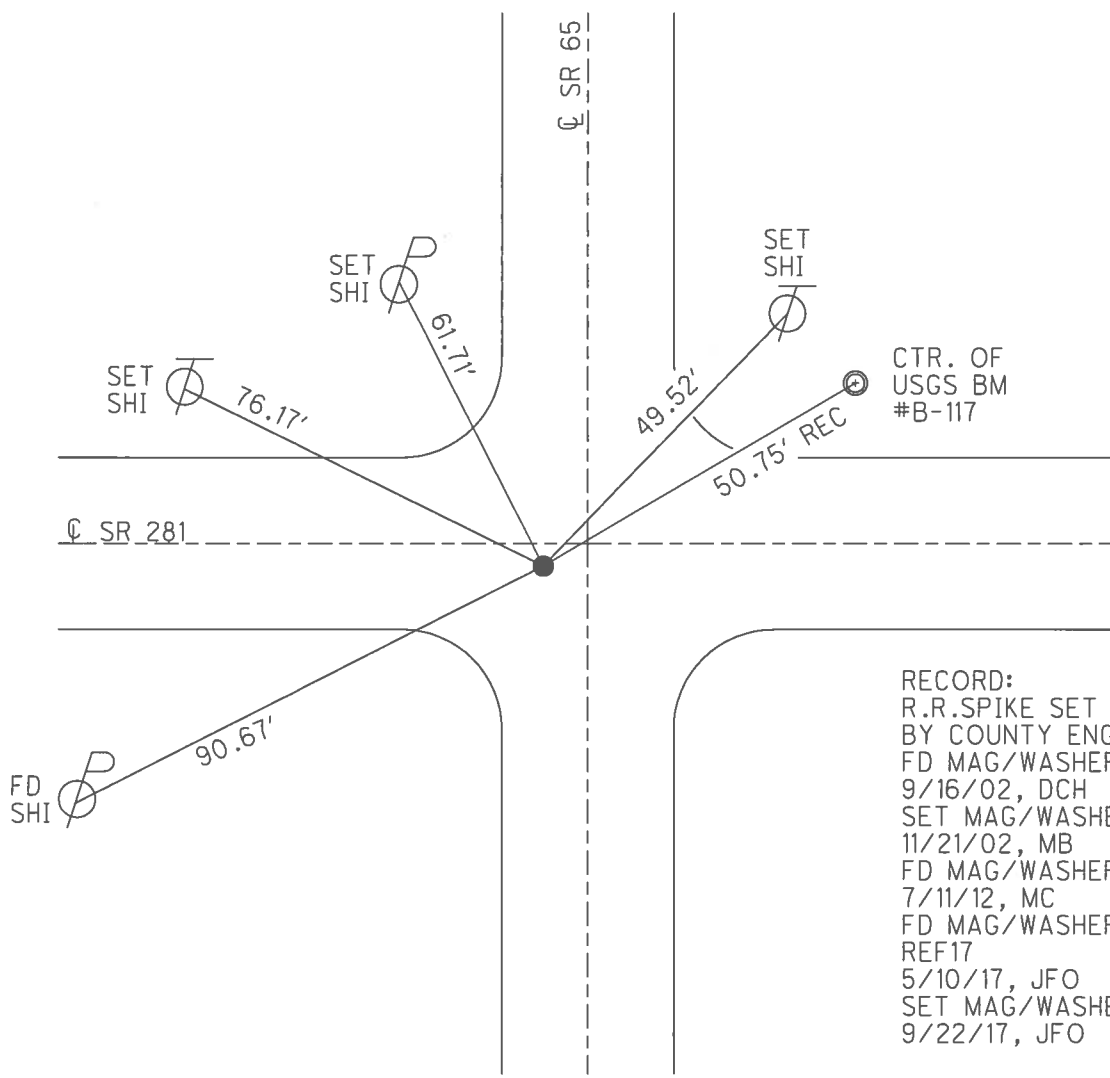
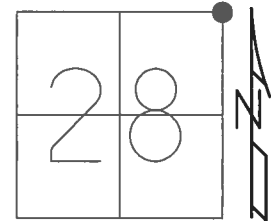


O.D.O.T. DISTRICT 2 SURVEY OFFICE (USE ONLY)

PERSONNEL	REFERENCE NO.	17	SHEET	20	OF	42
NOTES	RHOADES	DATE	5/8/17	ROUTE	SR 65	
H.C.	O'DONNELL	WEATHER	SUNNY	COUNTY	HENRY	
R.C.	RHOADES	TEMP.	44°	TOWNSHIP	RICHFIELD	
				SECTION	28	
				T	4	N
				R	8	E

TYPE MONUMENT MAG/WASHER  
 ON SURFACE - ~~BELOW~~ ON \_\_\_\_\_  
 LEFT - ☉ PAV'T - ~~RIGHT~~ 3.2', 1.7' S. OF ☉ SR 281  
 - TO - EDGE PAVEMENT  
 S.L.M. 423+45  
 GRID: NORTHING: 592437.952 EASTING: 1572551.483

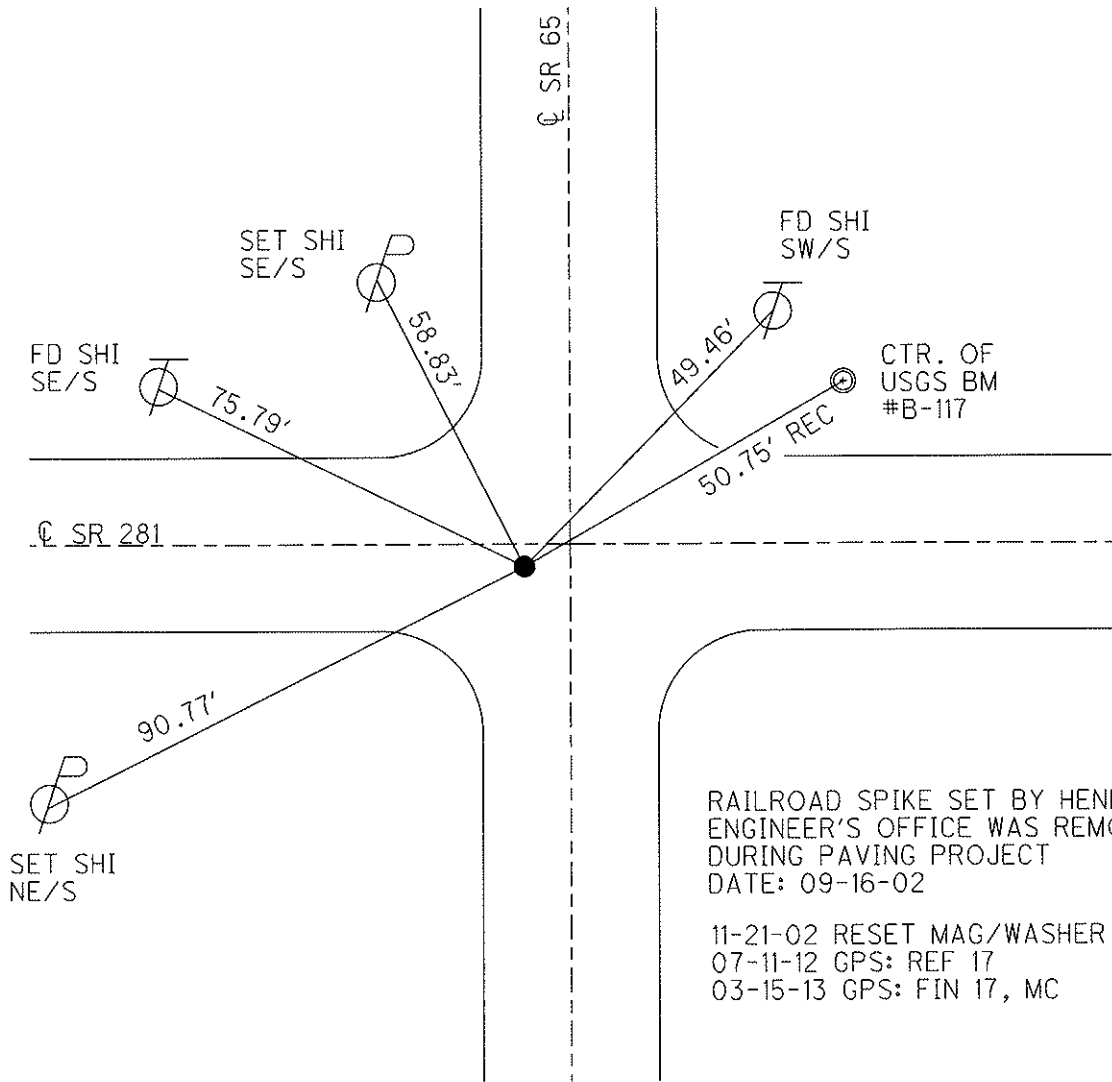
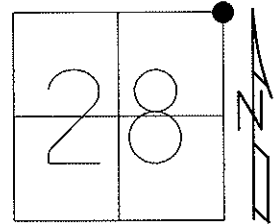


RECORD:  
 R.R.SPIKE SET  
 BY COUNTY ENGR.  
 FD MAG/WASHER  
 9/16/02, DCH  
 SET MAG/WASHER  
 11/21/02, MB  
 FD MAG/WASHER  
 7/11/12, MC  
 FD MAG/WASHER  
 REF17  
 5/10/17, JFO  
 SET MAG/WASHER  
 9/22/17, JFO

O.D.O.T. DISTRICT 2 SURVEY OFFICE (USE ONLY)

PERSONNEL	REFERENCE NO. <u>17</u>	SHEET <u>20</u> OF <u>42</u>
NOTES <u>BARNHISEL</u>	DATE <u>9/16/02</u>	ROUTE <u>SR 65</u>
H.C. <u>CANTERBURY</u>	WEATHER <u>SUNNY</u>	COUNTY <u>HENRY</u>
R.C. <u>BARNHISEL</u>	TEMP. <u>70°</u>	TOWNSHIP <u>RICHFIELD</u>
		SECTION <u>28</u>
		T <u>4</u> N R <u>8</u> E

TYPE MONUMENT MAG / WASHER  
 ON SURFACE - ~~BELOW~~ ON  
 LEFT - ☉ PAV'T - ~~RIGHT~~ 3.2', (1.7' SOUTH OF ☉ SR 281)  
TO EDGE PAVEMENT  
 S.L.M. 423+45  
 Grid: Northing: 592437.974 Easting: 1572551.428



RAILROAD SPIKE SET BY HENRY CO  
 ENGINEER'S OFFICE WAS REMOVED  
 DURING PAVING PROJECT  
 DATE: 09-16-02

11-21-02 RESET MAG/WASHER, MB  
 07-11-12 GPS: REF 17  
 03-15-13 GPS: FIN 17, MC

# O.D.O.T. DISTRICT 2 SURVEY OFFICE

PERSONNEL \_\_\_\_\_

REFERENCE NO. 17

SHEET 18 OF 29

NOTES BARNHISEL "RC"

H.C. CANTERBURY

DATE 9-16-02

ROUTE 65

R.C. \_\_\_\_\_

WEATHER SUNNY

COUNTY HENRY

TEMP. +70°

TOWNSHIP RICHFIELD

SECTION 28

T 4 N R 8 E

TYPE MONUMENT PK<sup>E</sup> WASHER

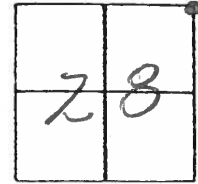
ON SURFACE - ~~BELOW~~ YES

LEFT - E PAV'T. - ~~RIGHT~~ 3.2'

- TO - EDGE PAVEMENT

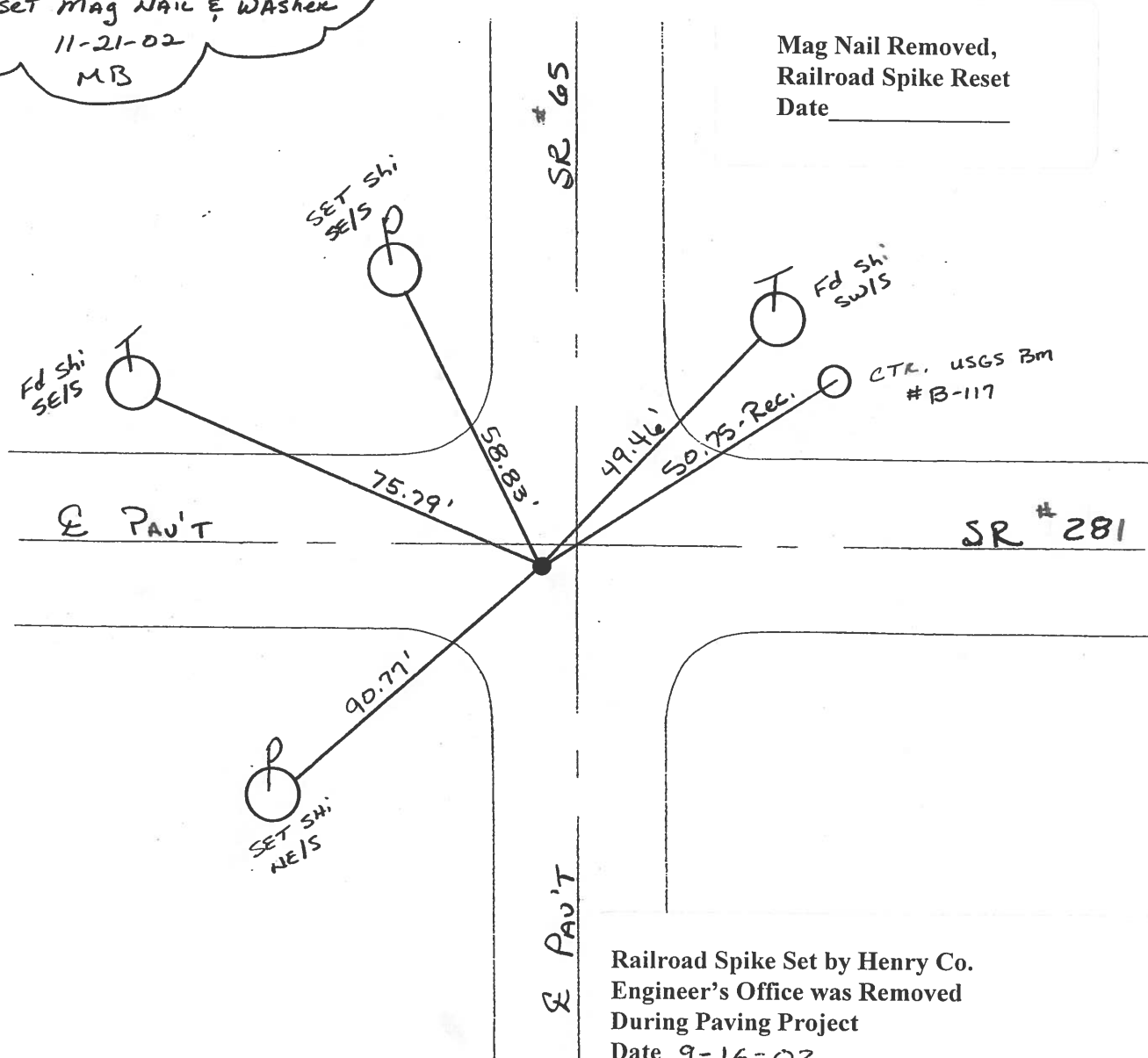
S.L.M. 423+45

1.7' South of E SR 281



*Reset mag nail & washer  
11-21-02  
MB*

Mag Nail Removed,  
Railroad Spike Reset  
Date \_\_\_\_\_



Railroad Spike Set by Henry Co.  
Engineer's Office was Removed  
During Paving Project  
Date 9-16-02

# O.D.O.T. DISTRICT 2 SURVEY OFFICE

PERSONNEL

REFERENCE NO. 17

SHEET 18 OF 18

NOTES BARNHISEL ✓

9-16-02

H.C. W.C.

DATE 4-11-90

ROUTE 65

R.C. HOFFMAN MB

WEATHER SUNNY ✓

COUNTY HENRY

TEMP. +35° +70

TOWNSHIP Richfield

SECTION 28

T 4 N R B E

TYPE MONUMENT P.K. & Washer ✓

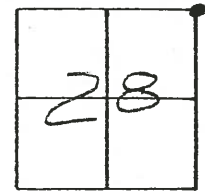
*Removed 9-26-02*

ON SURFACE - BELOW yes ✓

LEFT- & PAV'T. - RIGHT 3.2 ✓

TO - EDGE PAVEMENT 1.7 S. OF & SR 281 ✓

S.L.M. ~~423+56~~ ~~423+57~~ ~~423+58~~



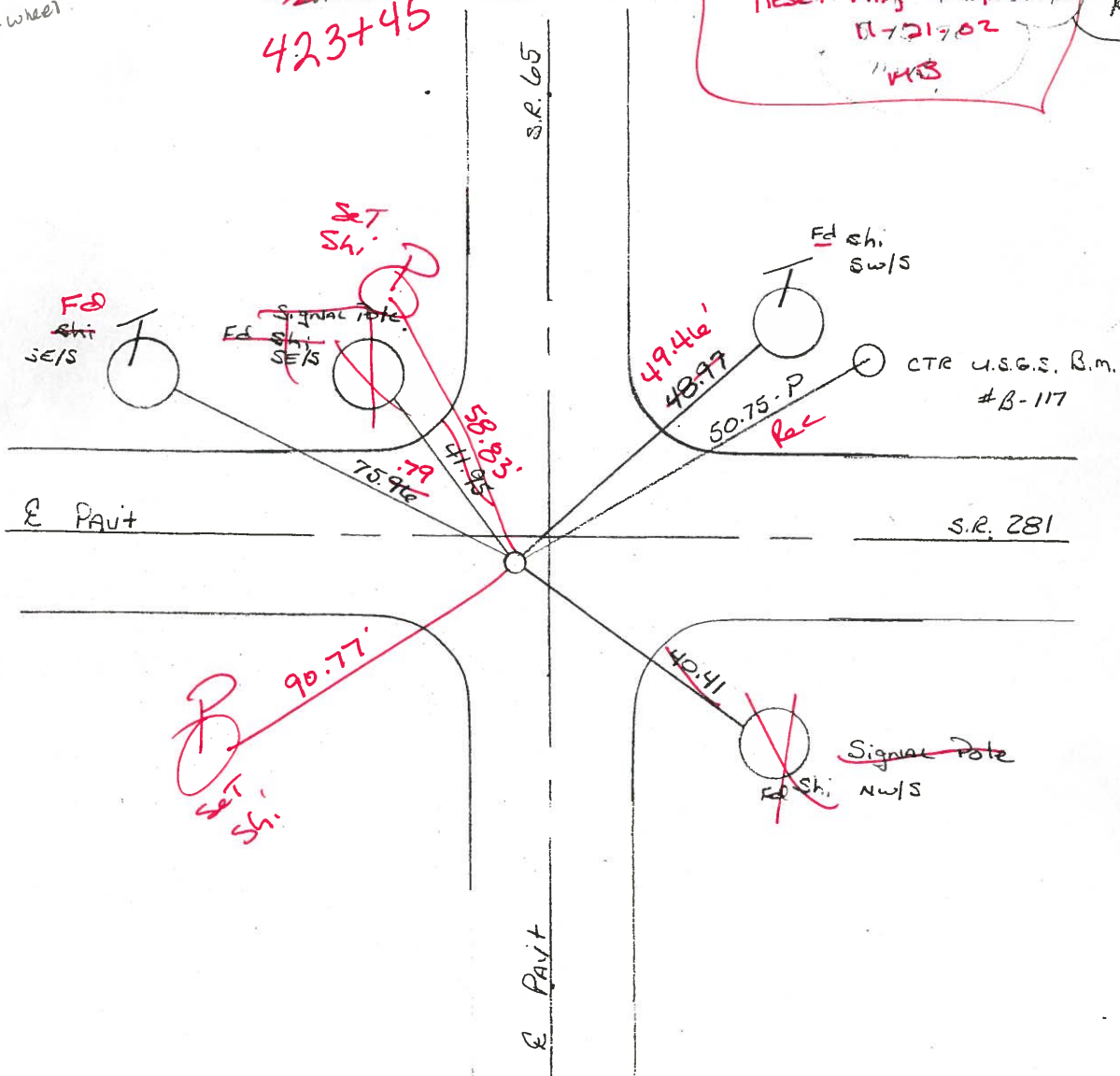
*2675 - DM  
2652 - wheel*

~~423+56~~  
~~423+57~~  
~~423+58~~  
**423+45**

~~423+59~~  
~~423+60~~

*Reset Mag. Wash. Washer  
11-21-02  
MB*

*Not Covered  
10-13-93*



County HENRY S.R. 65

Township RICHFIELD

Section 28

T4N, R8E

Personnel HOFFMAN

LOENHKE H.C.

HOUSEHOLDER R.C.

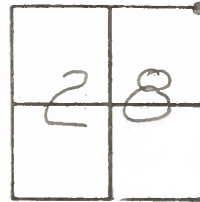
BARNHISEL

# 17

Date 1-27-84

Weather Cloudy

Temp. +30°

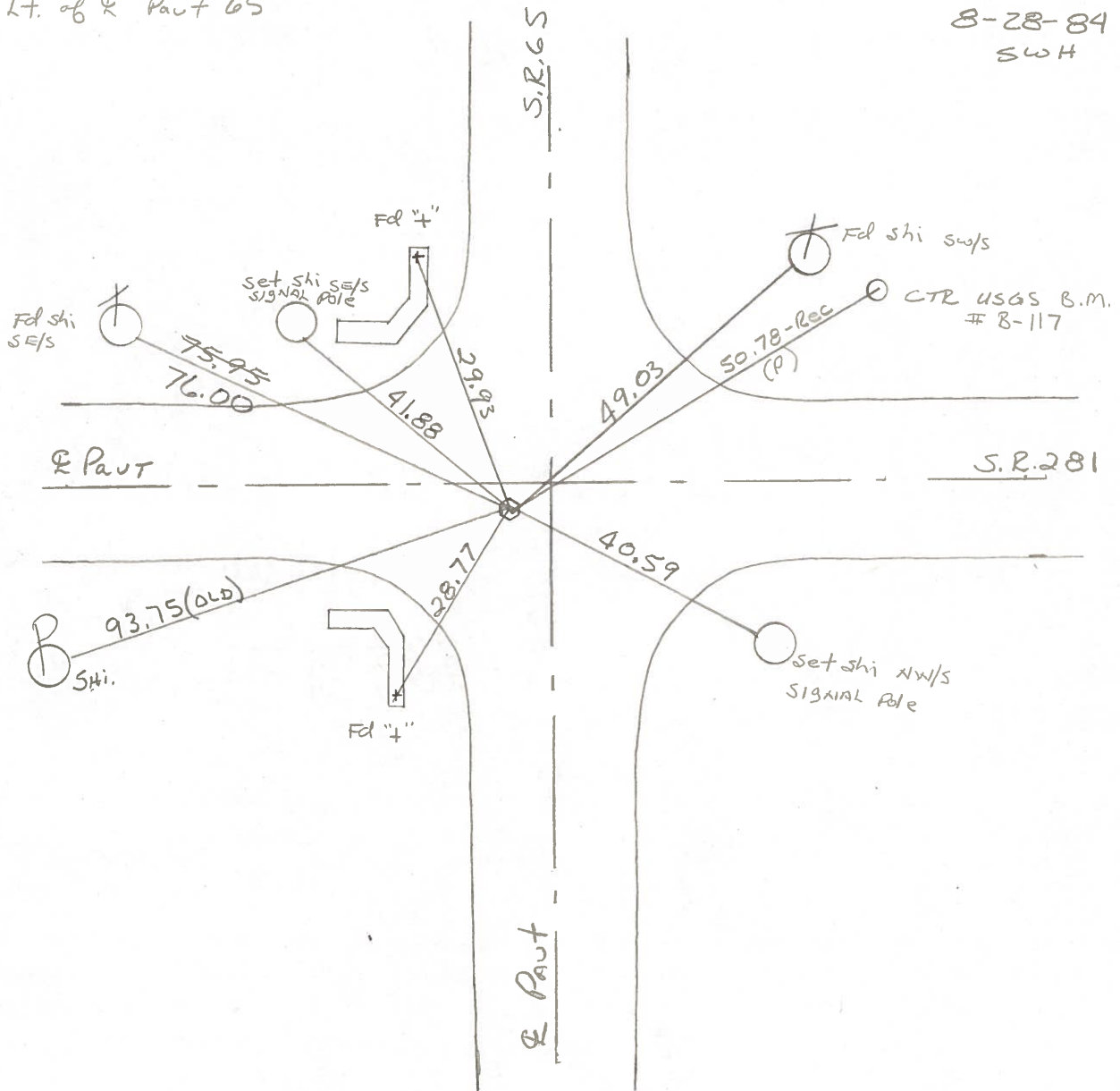


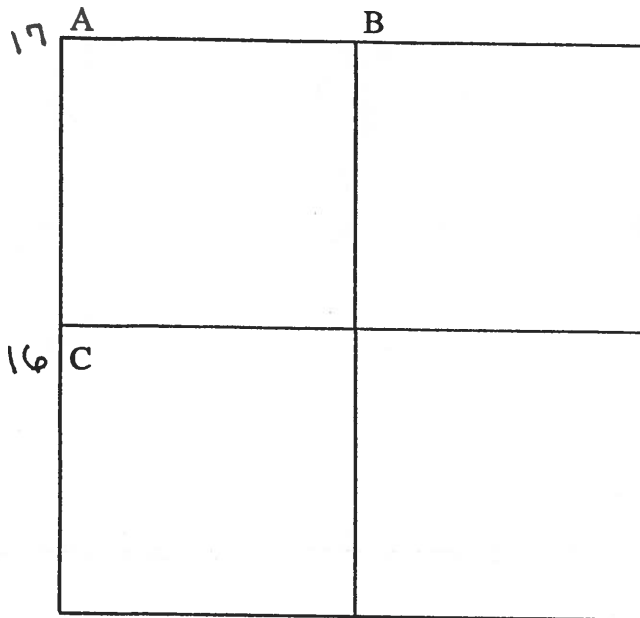
Fd 3/4" I. PIPE @ SURFACE  
1' S. of & Part 281  
3' Lt. of & Part 65

S.L.M. 423 + 56

Set PK/WASHER

8-28-84  
SWH





COUNTY: HENRY

TOWNSHIP: RICHFIELD

T-4-N R-8-E

SECTION: 27

7/26/79 R.W., J.J., G.M.

17 A - Found recorded iron pipe over iron pin. No stone could be located. Replaced iron pipe in original position. Pk's 6' north and west.

56.30' N.W. to duplex se/s telephone pole.

29.88' N.W. to "+" north end of headwall.

49.04' N.E. to shiner sw/s telephone pole.

50.75' N.E. to center USGS BM "B-117".

28.68' S.W. to "+" south end of headwall.

8/1/88 R.W., S.K. Found Pk. nail and shiner on surface.

41.66' N.W. to shiner se/s signal pole.

56.29' N.W. to duplex sw/s power pole.

41.61' N.W. to "+" north end conc. pipe.

50.74' N.E. to center USGS BM "B-117 1947".

48.94' N.E. to shiner sw/s telephone pole.

40.49' S.E. to shiner nw/s signal pole.

39.93' S.W. to "+" center north wall catch basin. (P)

60.40' S.W. to "+" south end conc. pipe. (P)

12/21/79 R.W., C.S.

B - Corner is lost. Reestablished N $\frac{1}{4}$  Post midway between and in line with the NE corner and NW corner of Sec. 27. Placed 5/8" x 18" iron pin at N $\frac{1}{4}$  Post. Pk's 15' northeast and northwest. Stone is 8.0' south of south edge 20' pavement.

43.55' N.N.E. to "+" top east end conc. headwall. (P)

52.81' N.N.E. to duplex s/s telephone pole. (P)

19.72' S.E. to 5/8"x30" iron pin on ditch bank.

22.02' S.W. to 5/8"x30" iron pin on ditch bank.

9/1/88 R.W., S.K., K.A. Reset iron pin. Set new Pk's 10' NW and NE.

36.11' N.W. to 5/8" iron pin at north edge pavement. (P)

37.58' N.E. to 5/8" iron pin at north edge pavement. (P)

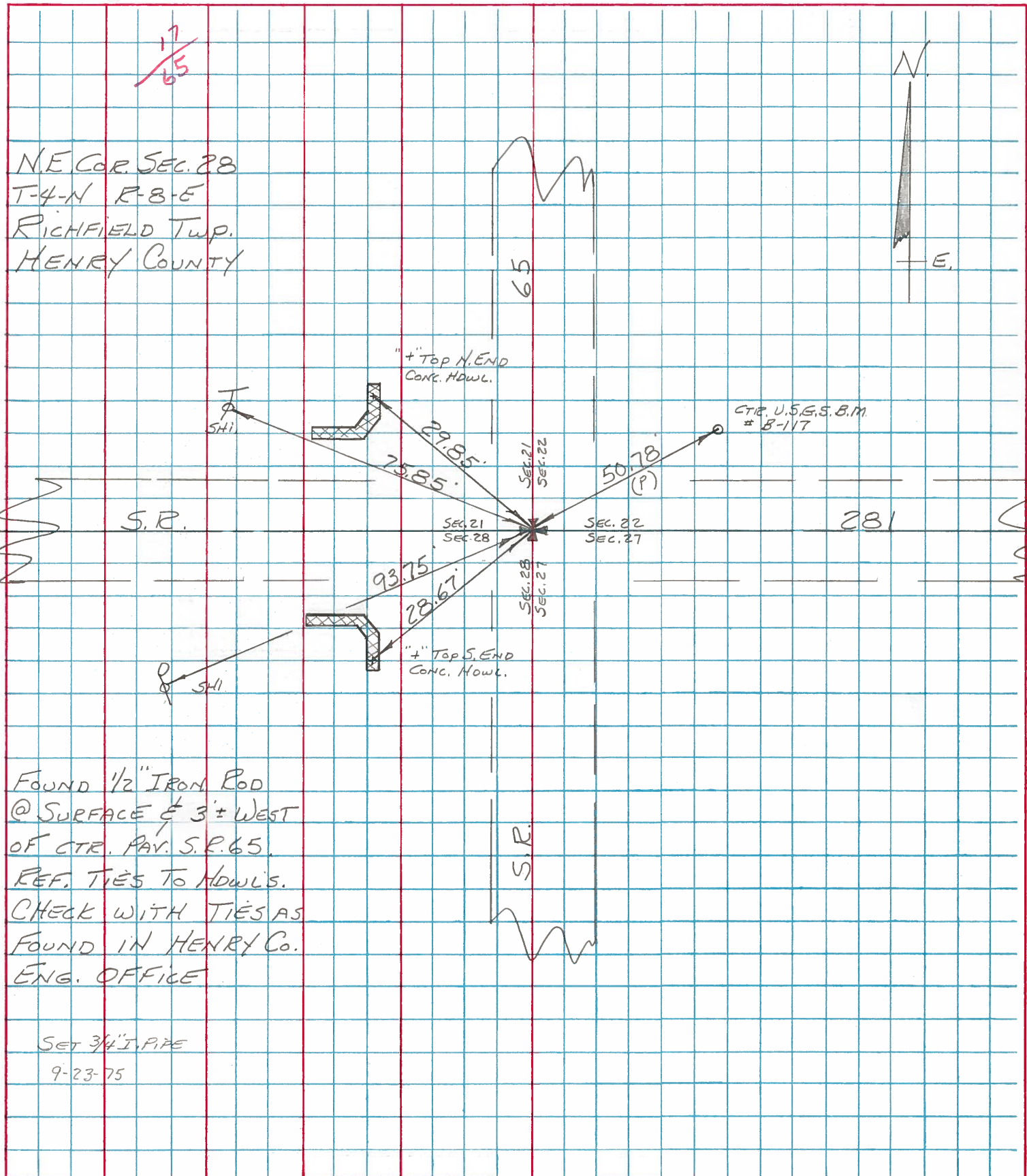
19.74' S.E. to 5/8" iron pin on ditch bank. (P)

22.06' S.W. to 5/8" iron pin on ditch bank. (P)

PERSONNEL	TITLE	PERSONNEL	TITLE
BURNSIDE			
SMITH			
BOWERS			
MEAD			

COUNTY HENRY DATE 11-26-74  
 S. R. 65 E 281 WEATHER CLEAR  
 (RICHFIELD TWP.)  
 SEC. N.E. COR SEC. 28 TEMP. +20°

DESCRIPTION REF. TO SEC. COR. JOB NO. \_\_\_\_\_



NE COR. SEC. 28  
 T-4-N R-8-E  
 RICHFIELD TWP.  
 HENRY COUNTY

FOUND 1/2" IRON ROD  
 @ SURFACE & 3' WEST  
 OF CTR. PAY. S.R. 65.  
 REF. TIES TO MONL'S.  
 CHECK WITH TIES AS  
 FOUND IN HENRY CO.  
 ENG. OFFICE

SET 3/4" I. PIPE  
 9-23-75

PERSONNEL TITLE PERSONNEL TITLE

Smith \_\_\_\_\_  
 Bowers \_\_\_\_\_  
 Mead \_\_\_\_\_

COUNTY Henry DATE 4-18-1974

S. R. 65 WEATHER Clear-Warm

SEC. Richfield Twp. TEMP. 65°

DESCRIPTION Controls Ties JOB NO. \_\_\_\_\_

