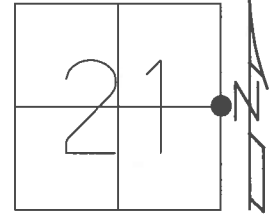


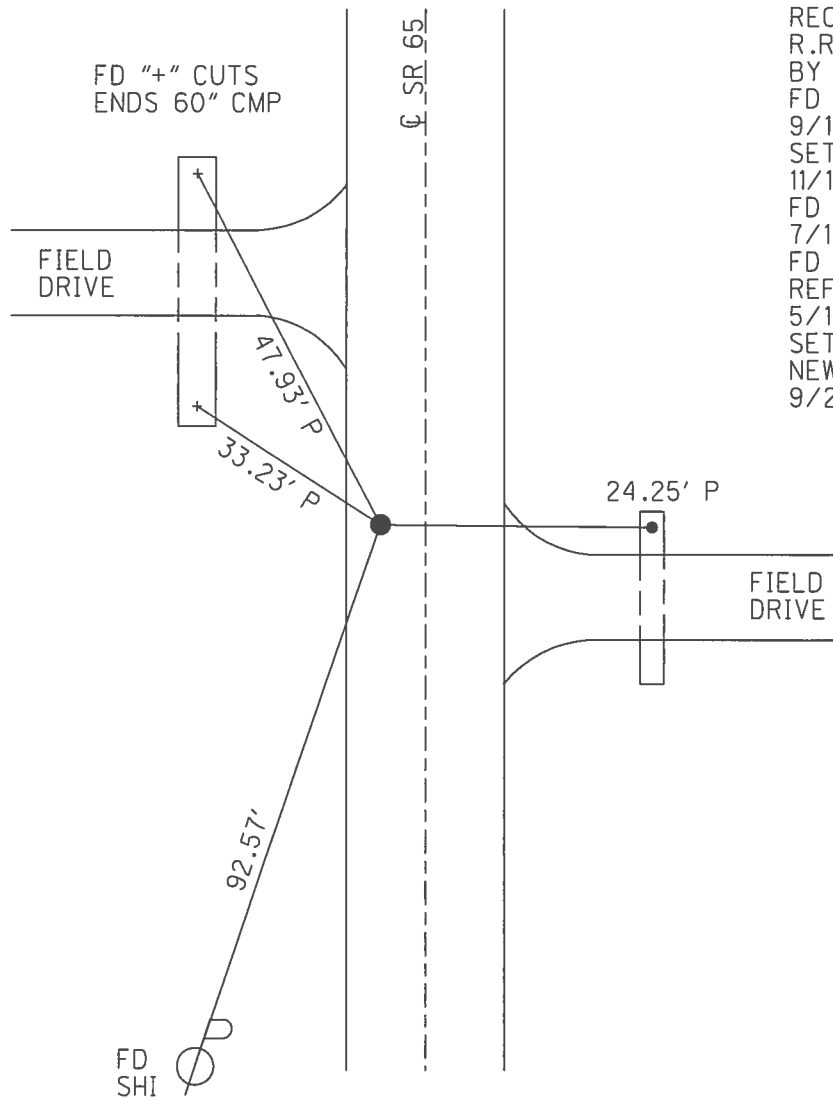
O.D.O.T. DISTRICT 2 SURVEY OFFICE (USE ONLY)

PERSONNEL _____ REFERENCE NO. 18 SHEET 21 OF 42
 NOTES RHOADES DATE 5/8/17 ROUTE SR 65
 H.C. O'DONNELL WEATHER SUNNY COUNTY HENRY
 R.C. RHOADES TEMP. 44° TOWNSHIP RICHFIELD
 _____ SECTION 21
 _____ T 4 N R 8 E

TYPE MONUMENT MAG/WASHER
 ON SURFACE - ~~BELOW~~ ON _____
 LEFT - ☉ PAV'T - ~~RIGHT~~ 4.9'
3.6' TO LT. EDGE PAVEMENT
 S.L.M. 449+99



GRID: NORTHING: 595091.897 EASTING: 1572562.053

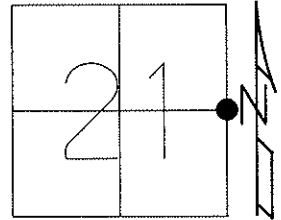


RECORD:
 R.R.SPIKE SET
 BY COUNTY ENGR.
 FD MAG NAIL
 9/16/02, DCH
 SET MAG/WASHER
 11/14/02, MB
 FD MAG/WASHER
 7/11/12, MC
 FD MAG/WASHER
 REF18
 5/10/17, JFO
 SET MAG/WASHER
 NEWREF18
 9/26/17, JFO

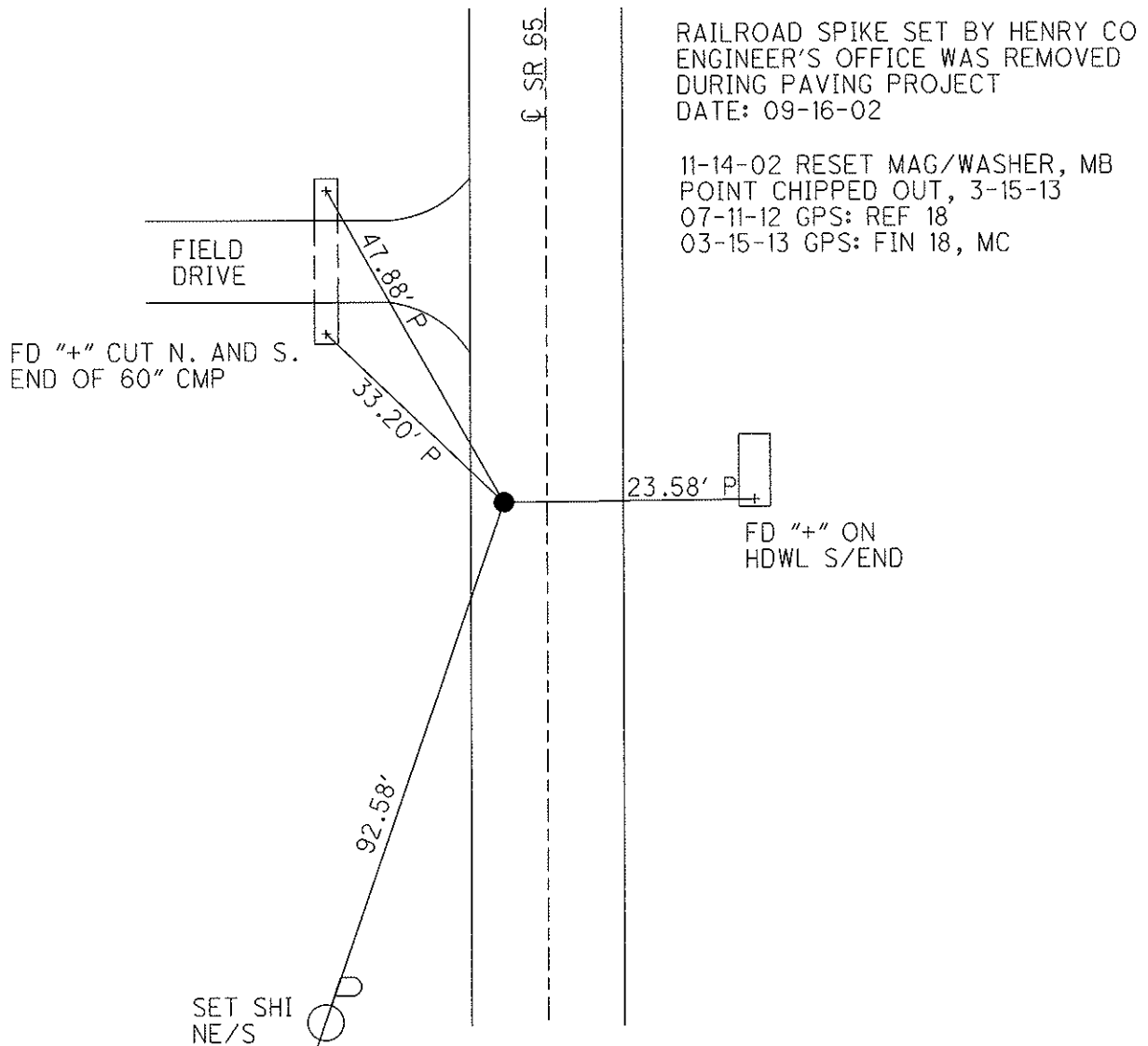
O.D.O.T. DISTRICT 2 SURVEY OFFICE (USE ONLY)

PERSONNEL	REFERENCE NO. <u>18</u>	SHEET <u>21</u> OF <u>42</u>
NOTES <u>BARNHESEL</u>	DATE <u>9/16/02</u>	ROUTE <u>SR 65</u>
H.C. <u>CANTERBURY</u>	WEATHER <u>SUNNY</u>	COUNTY <u>HENRY</u>
R.C. <u>BARNHESEL</u>	TEMP. <u>75°</u>	TOWNSHIP <u>RICHFIELD</u>
		SECTION <u>21</u>
		T <u>4</u> N R <u>8</u> E

TYPE MONUMENT MAG NAIL
 ON SURFACE - ~~BELOW~~ ON
 LEFT - Q PAV'T - ~~RIGHT~~ 4.9'
3.6' TO LT EDGE PAVEMENT
 S.L.M. 449+99



Grid: Northing: 595091.923 Easting: 1572561.960



O.D.O.T. DISTRICT 2 SURVEY OFFICE

PERSONNEL _____

REFERENCE NO. 18

SHEET 19 OF 29

NOTES BARNHISEL "RC"

H.C. CANTERBURY

DATE 9-16-02

ROUTE 65

R.C. _____

WEATHER SUNNY

COUNTY HENRY

TEMP. +75°

TOWNSHIP RICHFIELD

SECTION 21

T 4 N R 8 E

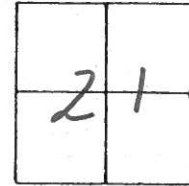
TYPE MONUMENT PK & WASHER

ON SURFACE - ~~BELOW~~ YES

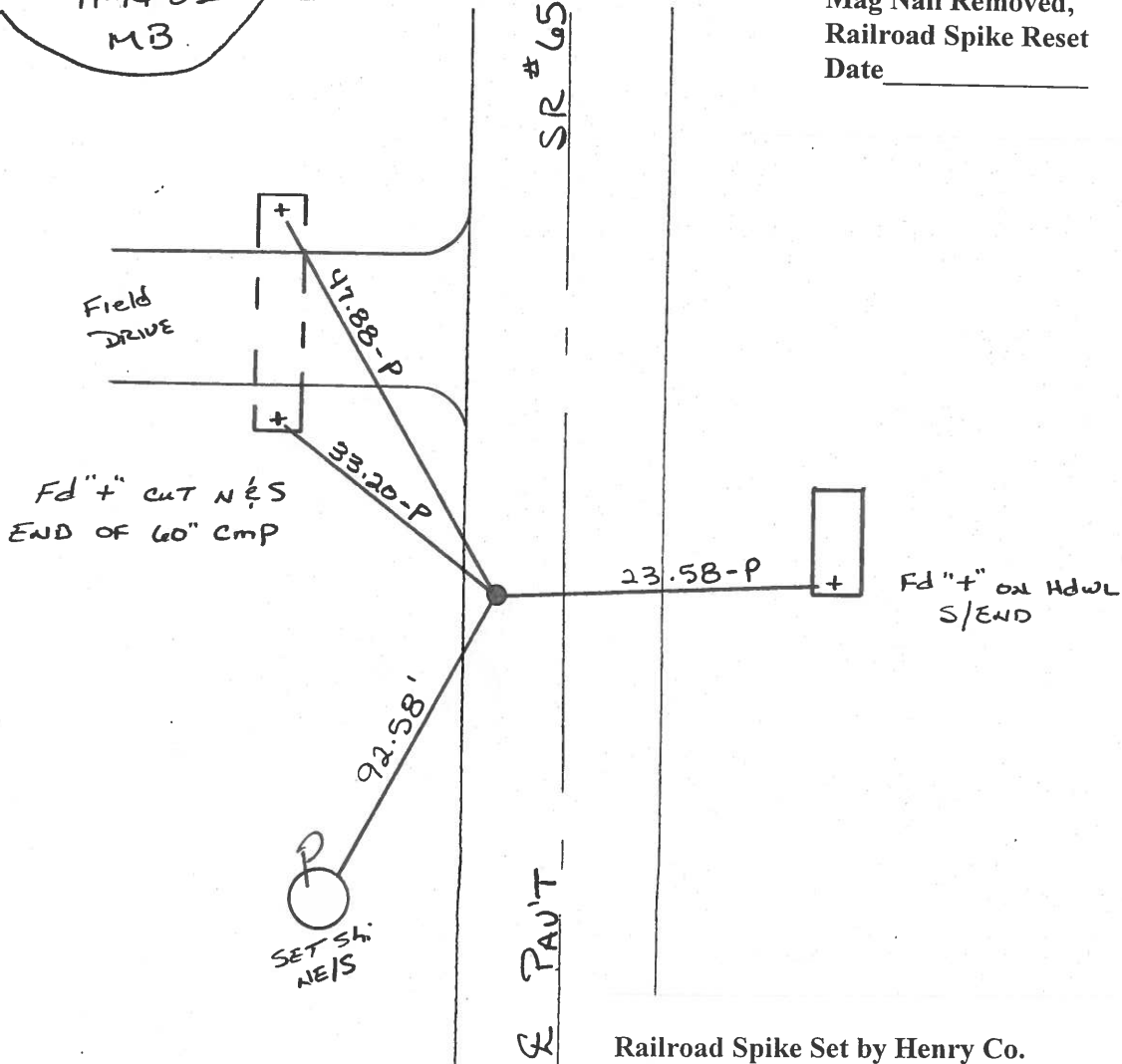
LEFT- & PAV'T. - ~~RIGHT~~ 4.9'

3.6' TO LT. EDGE PAVEMENT

S.L.M. 449+99



*Reset mag nail & washer
11-14-02
MB.*



Mag Nail Removed,
Railroad Spike Reset
Date _____

Railroad Spike Set by Henry Co.
Engineer's Office was Removed
During Paving Project
Date 9-16-02

O.D.O.T. DISTRICT 2 SURVEY OFFICE

PERSONNEL

REFERENCE NO. 18

SHEET OF

NOTES BARNHISEL ✓

9-16-02

H.C. " " MC

DATE 4-11-90

ROUTE 65

R.C. HOFFMAN MB

WEATHER SUNNY ✓

COUNTY HENRY

TEMP. +35° +75

TOWNSHIP RICHFIELD

SECTION 21

T4 N R 8 E

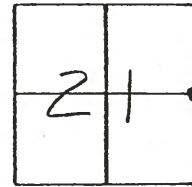
TYPE MONUMENT P.K. & Washer ✓ *Removed*

ON SURFACE - BELOW yes ✓

LEFT - & PAV'T. - RIGHT 6.3 4.9

3.6 4.1 TO LT EDGE PAVEMENT

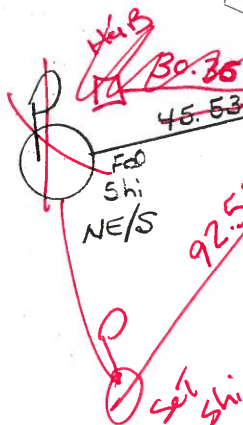
S.L.M. 450+10 443+96 449+99



Fd "X" TOP OF N. & S. END OF 60" metal Pipe

Field DRIVE

~~Fd "X" on 24" CONCRETE PIPE~~



S.E. 65

E PAV +

Set P.K. & Washer
5-15-90
MB

Reset MAG NAIL / Washer
11-14-02
MB

.58
23.49-P Fd "X" on Hd w/ol

47.88-P
33.20-P
19.65-P

OD.O.T. DISTRICT 2 SURVEY OFFICE

SHEET _____ OF _____

County HENRY S.R. 65

Date 1-27-84

Township RICHFIELD

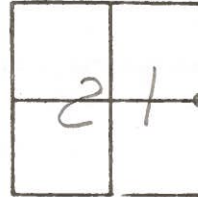
Weather Cloudy

Section 21

Temp. +30°

T4N, R8E

Personnel HOFFMAN



LOEHRE H.C.

HOUSEHOLDER R.C.

BARNHISEL

18

Fd. R.P. SPK/CTR. PUNCHED, set BY COUNTY

S.L.M. 450+11

@ SURFACE

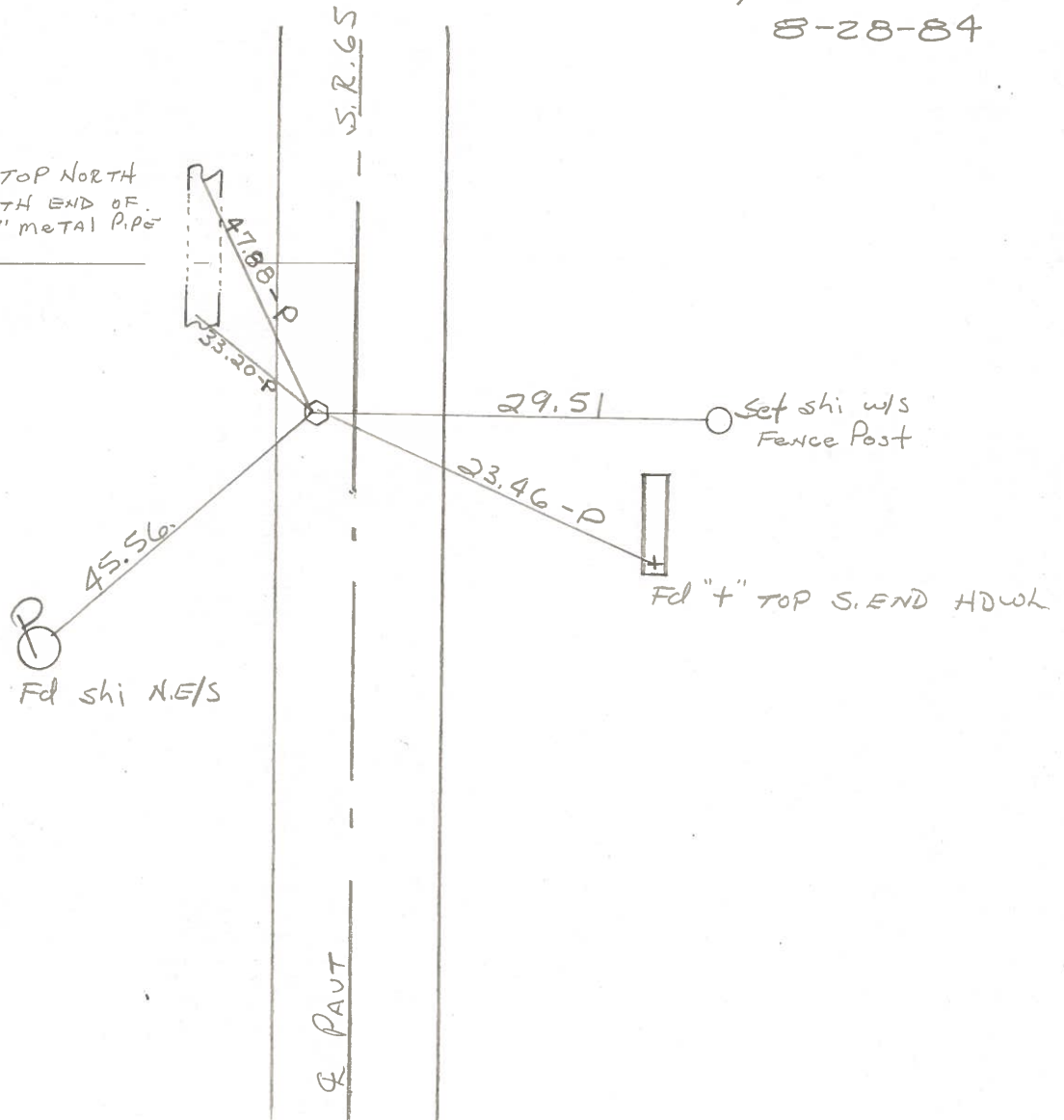
6.0' Lt. of & PAUT SR65

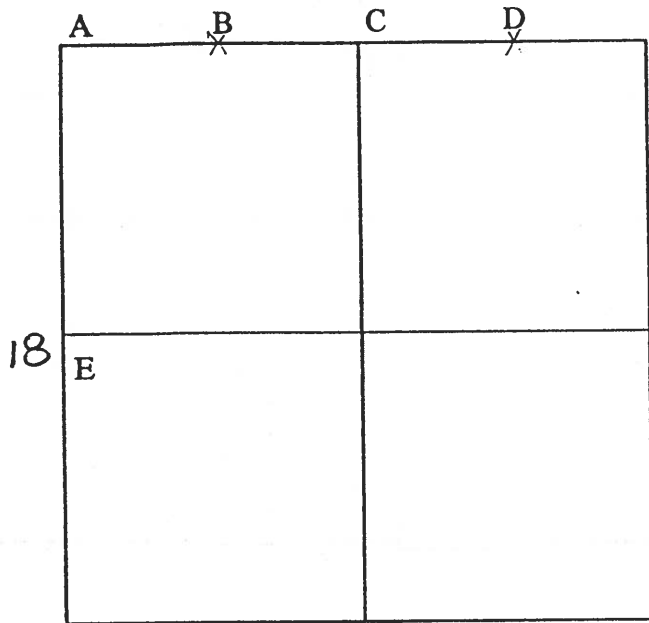
SET PK/WASHER

3.0' TO Lt. EP.

8-28-84

Fd "+" TOP NORTH
 & SOUTH END OF
 60" METAL PIPE
 Field Dr.





COUNTY: HENRY

TOWNSHIP: RICHFIELD

T-4-N R-8-E

SECTION: 22

18 E - 7/26/79 R.W., J.J., G.M.
 Found recorded RR spike over stones, 0.22' north and 0.04' east of high point of true stone (3"x5"x19") 17" below road surface. Removed top stones and placed center punched RR spike on surface over high point of true stone. Pk's 6' north and east. Stone is 2.9' east of west edge 18' pavement.

- 54.57' W. to "+" in conc. corn crib foundation. GONE
- 33.19' N.N.W. to "+" S. end 60" metal pipe.
- 47.85' N.N.W. to "+" N. end 60" metal pipe.
- 29.45' E. to shiner w/s corner fence post.
- 45.54' S.S.W. to shiner ne/s power pole.
- 29.17' S.W. to "+" in end of 21" CMP.
- 23.35' E.S.E. to "+" S. end conc. headwall.

- 7/25/88 R.W., S.K.
- 19.61' N.W. to "+" NW end conc. pipe. (P)
- 33.19' N.W. to "+" south end metal pipe. (P)
- 47.87' N.N.W. to "+" north end metal pipe.
- 23.44' E.S.E. to "+" south end conc. headwall. (P)
- 45.53' S.W. to nail/shiner ne/s power pole.
- 29.18' S.W. to "+" east end CMP. (P)

PERSONNEL	TITLE	PERSONNEL	TITLE
BURNSIDE			
SMITH			
BOWERS			
MEAD			

COUNTY HENRY DATE 5-12-75
 S. R. 65 WEATHER Cloudy
 SEC. E 1/4 Post Sec. 21 Richfield Twp. TEMP. +60°

DESCRIPTION REF. SECTION CORNER LEFT CENTER LINE RIGHT JOB NO.

