

O.D.O.T. DISTRICT 2 SURVEY OFFICE (USE ONLY)

PERSONNEL	REFERENCE NO.	<u>19</u>	SHEET	<u>22</u>	OF	<u>42</u>
NOTES	<u>RHOADES</u>	DATE	<u>5/8/17</u>	ROUTE	<u>SR 65</u>	
H.C.	<u>O'DONNELL</u>	WEATHER	<u>SUNNY</u>	COUNTY	<u>HENRY</u>	
R.C.	<u>RHOADES</u>	TEMP.	<u>44°</u>	TOWNSHIP	<u>RICHFIELD</u>	
				SECTION	<u>21</u>	
				T	<u>4</u>	N
				R	<u>8</u>	E

TYPE MONUMENT MAG SHANK

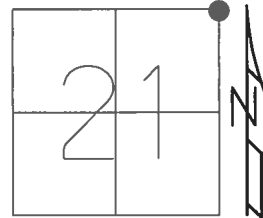
~~ON SURFACE~~ - BELOW ON _____

LEFT - ☉ PAV'T - ~~RIGHT~~ 0.5', 7' S. OF ☉ CR J

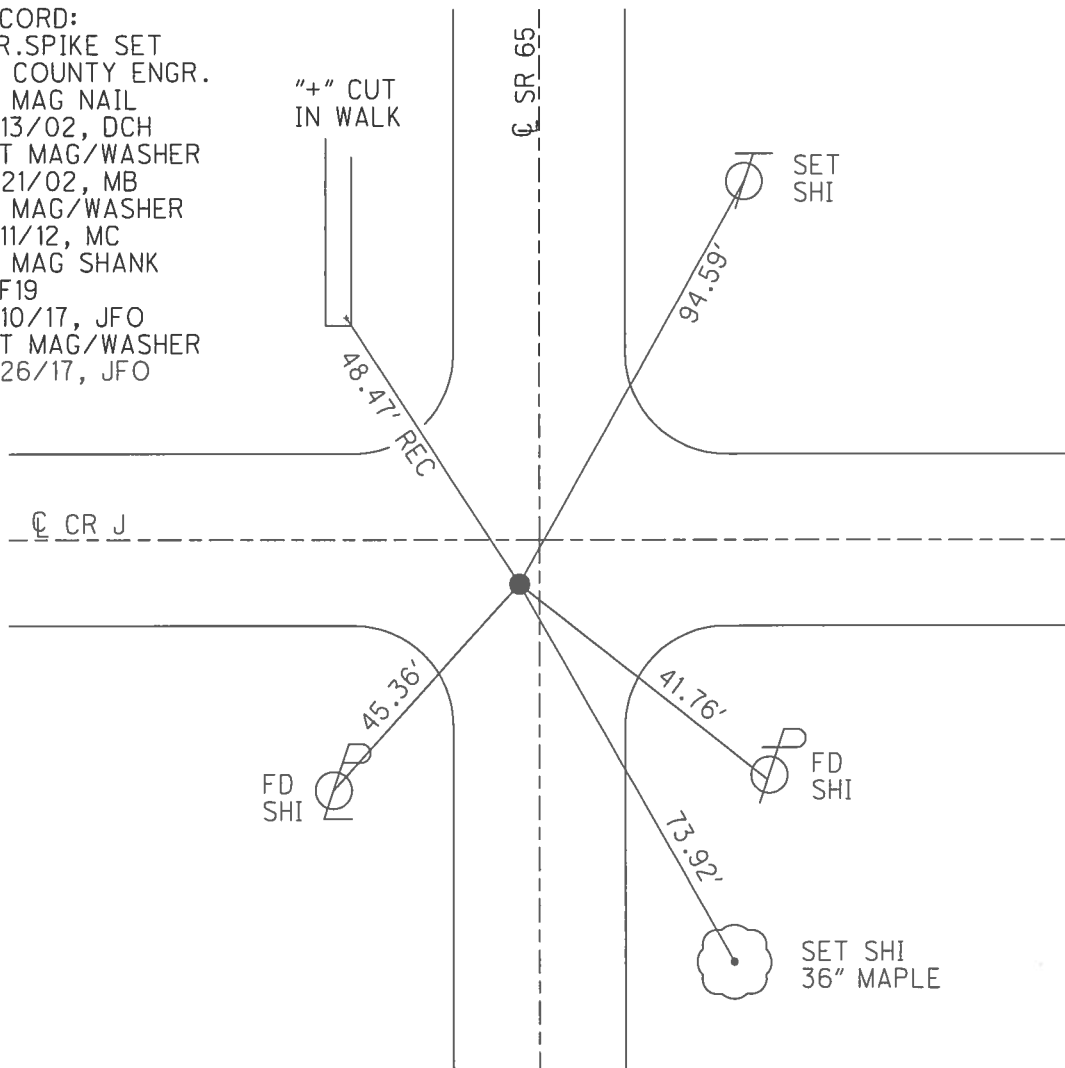
- TO - EDGE PAVEMENT

S.L.M. 476+55

GRID: NORTHING: 597746.184 EASTING: 1572573.835



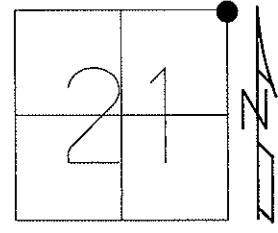
RECORD:
 R.R.SPIKE SET
 BY COUNTY ENGR.
 FD MAG NAIL
 9/13/02, DCH
 SET MAG/WASHER
 11/21/02, MB
 FD MAG/WASHER
 7/11/12, MC
 FD MAG SHANK
 REF19
 5/10/17, JFO
 SET MAG/WASHER
 9/26/17, JFO



O.D.O.T. DISTRICT 2 SURVEY OFFICE (USE ONLY)

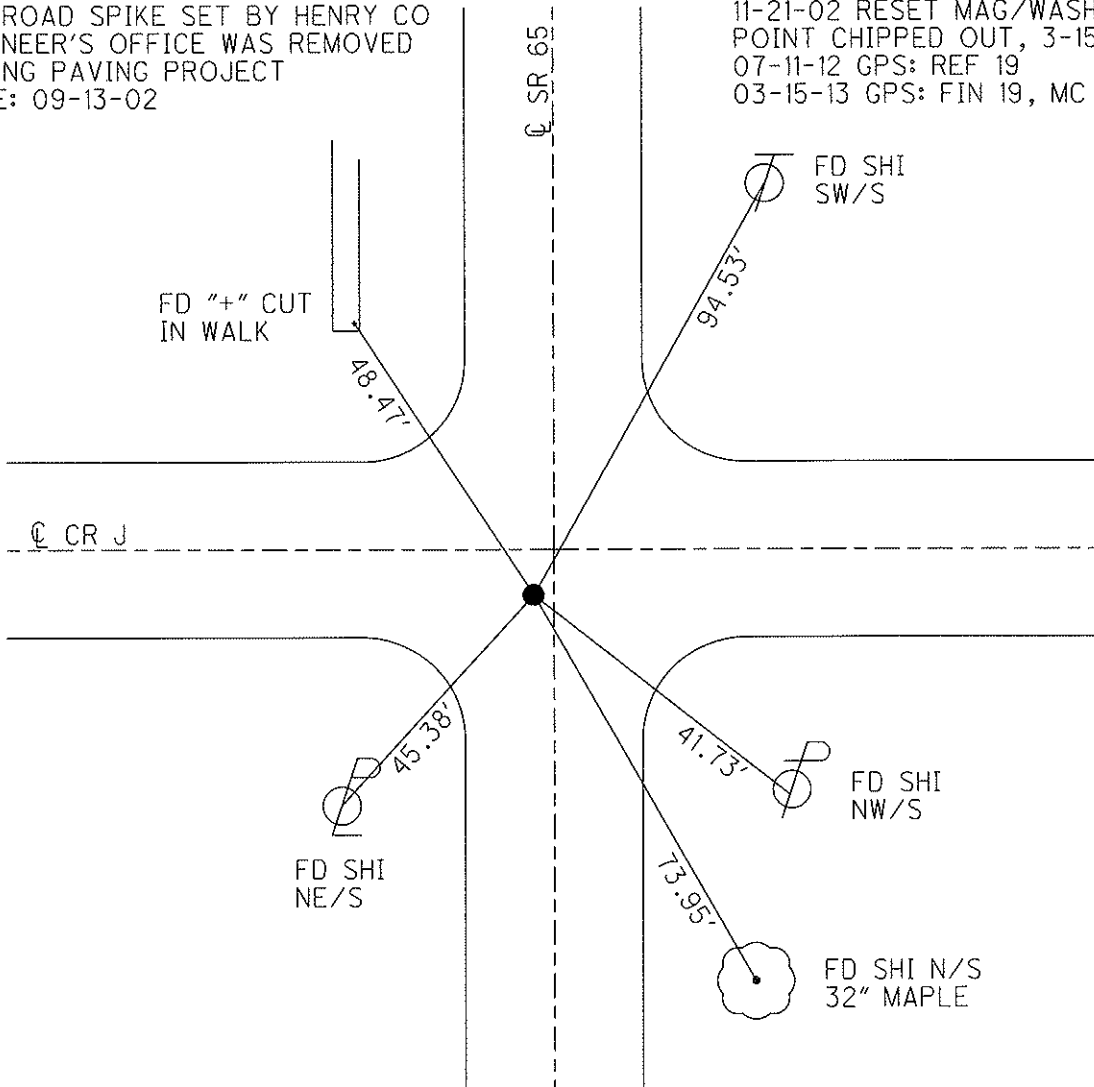
PERSONNEL	REFERENCE NO. <u>19</u>	SHEET <u>22</u> OF <u>42</u>
NOTES <u>BARNHESEL</u>	DATE <u>9/13/02</u>	ROUTE <u>SR 65</u>
H.C. <u>HOMAN</u>	WEATHER <u>SUNNY</u>	COUNTY <u>HENRY</u>
R.C. <u>BEAUMONT</u>	TEMP. <u>70°</u>	TOWNSHIP <u>RICHFIELD</u>
		SECTION <u>21</u>
		T <u>4</u> N R <u>8</u> E

TYPE MONUMENT MAG / WASHER
~~ON SURFACE~~ - BELOW 3.5"
 LEFT - Q PAV'T - ~~RIGHT~~ 0.5', (7.0' SOF Q CR J)
TO EDGE PAVEMENT
 S.L.M. 476+55
 Grid: Northing: 597746.212 Easting: 1572573.867



RAILROAD SPIKE SET BY HENRY CO
 ENGINEER'S OFFICE WAS REMOVED
 DURING PAVING PROJECT
 DATE: 09-13-02

11-21-02 RESET MAG/WASHER, MB
 POINT CHIPPED OUT, 3-15-13
 07-11-12 GPS: REF 19
 03-15-13 GPS: FIN 19, MC



O.D.O.T. DISTRICT 2 SURVEY OFFICE

PERSONNEL

REFERENCE NO. 19

SHEET 20 OF 29

NOTES BARNHISEL

H.C. Homan

DATE 9-13-02

ROUTE 65

R.C. Beaumont

WEATHER SUNNY

COUNTY HENRY

TEMP. +70°

TOWNSHIP RICHFIELD

SECTION 21

T 4 N R 8 E

TYPE MONUMENT Lg RR Spk

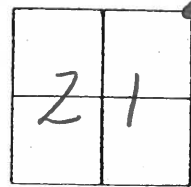
~~ON~~ SURFACE - BELOW 3.5"

LEFT - 0 PAV'T. - RIGHT 0.5'

- TO - EDGE PAVEMENT

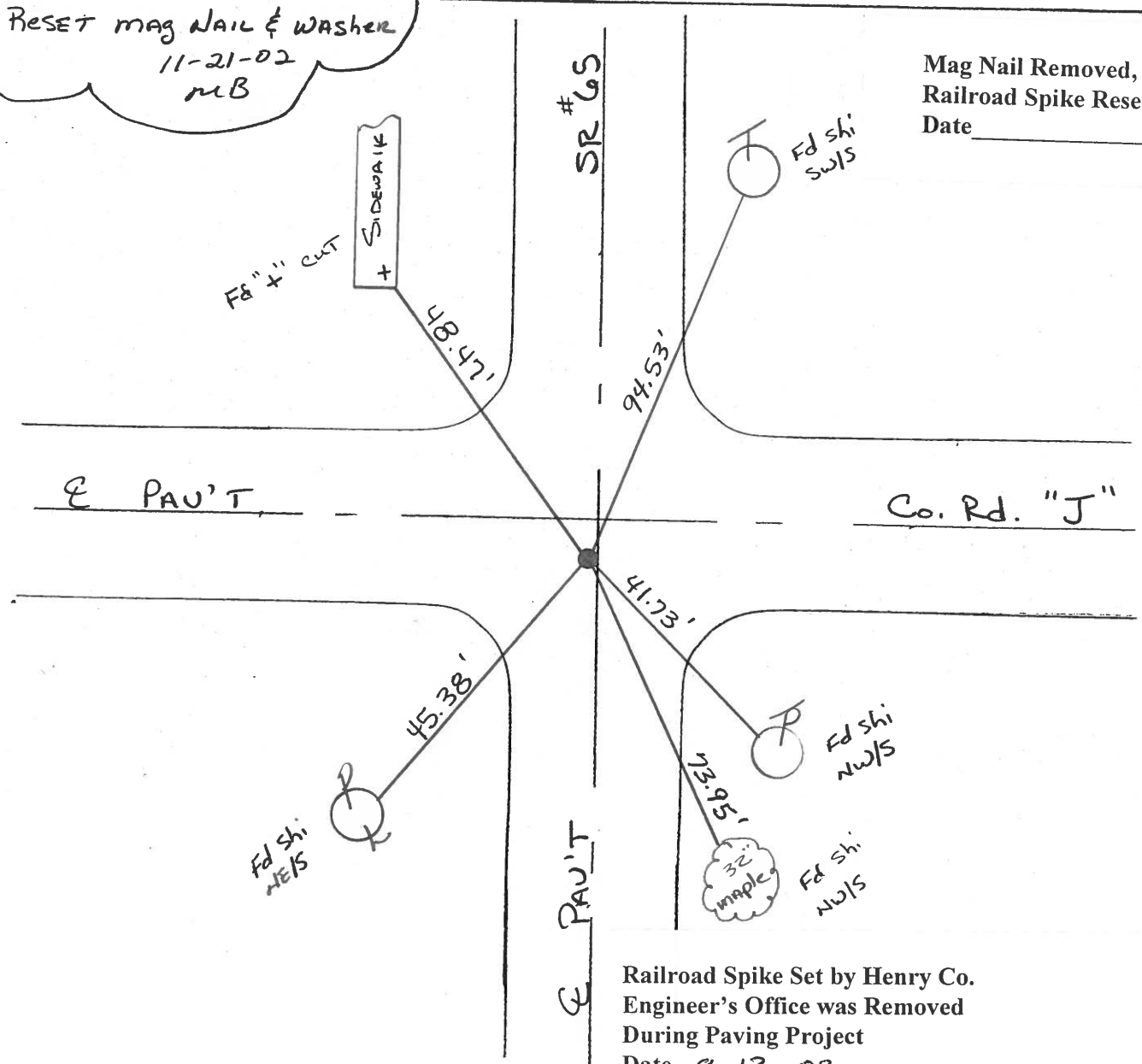
S.L.M. 476+55

7.0' S. of E Co. Rd "J"



RESET mag NAIL & WASHER
11-21-02
MB

Mag Nail Removed,
Railroad Spike Reset
Date _____



Railroad Spike Set by Henry Co.
Engineer's Office was Removed
During Paving Project
Date 9-13-02

O.D.O.T. DISTRICT 2 SURVEY OFFICE

PERSONNEL

REFERENCE NO. 19

SHEET OF

NOTES BARNHISEL ✓

9-13-02

H.C. " " DH

DATE 4-11-90

ROUTE 65

R.C. HOFFMAN CB

WEATHER SUNNY ✓

COUNTY HENRY

TEMP. +35° +70

TOWNSHIP Richfield

SECTION 21

T 4 N R 8 E

RR SPIK Removed

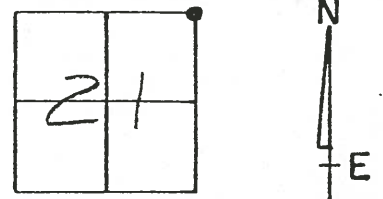
TYPE MONUMENT P.K. & Washer

ON SURFACE - BELOW yes 3 1/2

LEFT - ☉ PAV'T. - RIGHT 0.5

- TO - EDGE PAVEMENT 7.0 S. OF E. CORNER

S.L.M. ~~476+66~~ 470+02 ~~476+66~~



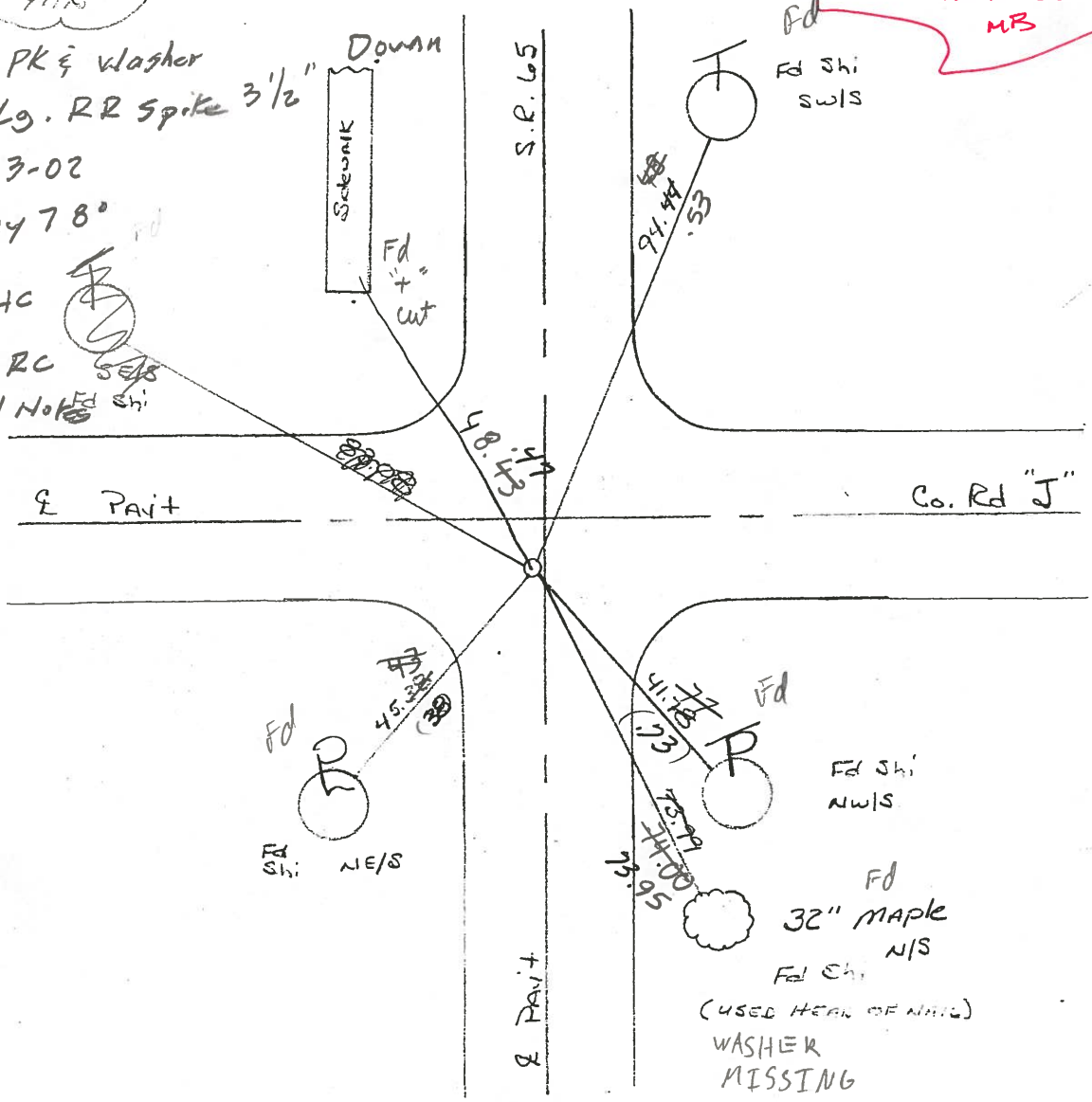
Set P.K. & Washer
5-15-90
YMS

476+55

Reset Magnet/Washer
11-21-02
MBS

Fd PK & Washer
Fd Lg. RR Spike 3 1/2"
9-13-02
Sunny 78°

Homan HC
Beaumont RC
Barnhisel Notes



ODOT DISTRICT 2 SURVEY OFFICE

SHEET _____ OF _____

County HENRY S.R. 65

Date 1-27-84

Township RICHFIELD

Weather Cloudy

Section 21

Temp. 30°

T4N, R8E

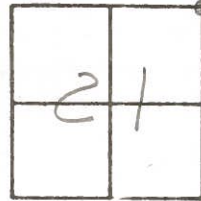
Personnel HOFFMAN

LOHRKE H.C.

HOUSEHOLDER R.C.

BARNHISEL

#19



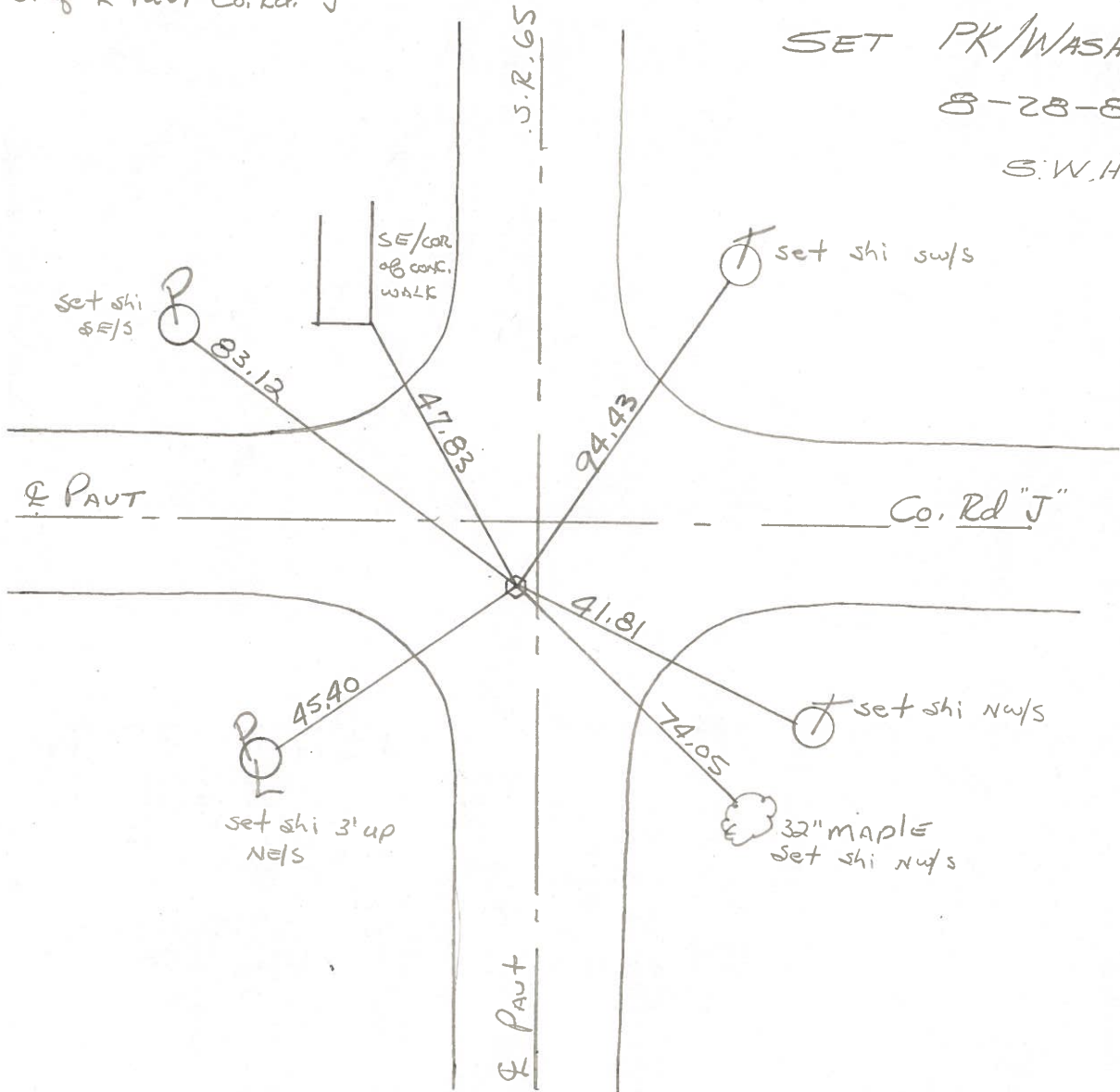
Fd. CTR. PUNCHED R.P. SPK set BY COUNTY
0.5' Lt of E PAUT SR 65
7.8' S. of E PAUT Co. Rd. "J"

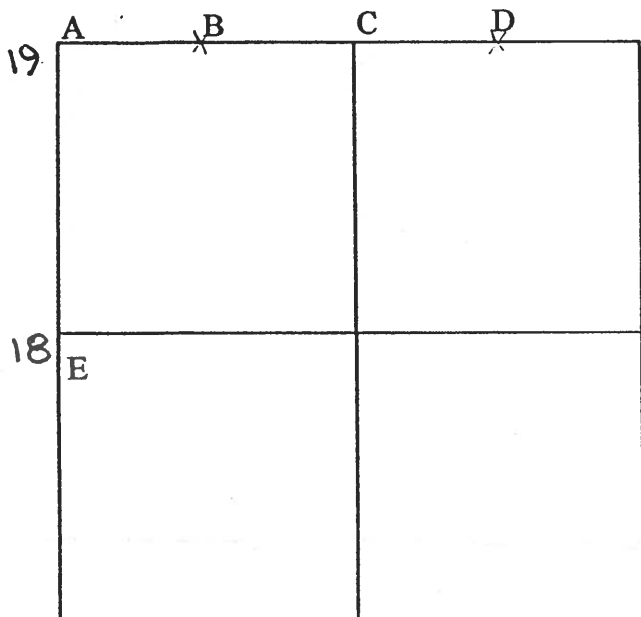
S.L.M. 476+65

SET PK/WASHER

8-28-84

S.W.H.





COUNTY: HENRY

TOWNSHIP: RICHFIELD

T- 4 -N R- 8 - E

SECTION: 22

19 7/30/79 R.W., J.J., G.M.
 A - Found recorded RR spike 0.63' east of high point of stone (4"x6"x24") 26" below road surface. Found wood stake on e/s stone. Placed center punched RR spike on surface over high point of stone. Pk's 6' north and west. Stone is 8.2' east of west edge 18' pavement.

47.91' N.W. to SE corner conc. walk.
 38.99' S.E. to shiner nw/s telephone pole.
 74.03' S.S.E. to shiner nw/s 32" maple.
 45.13' S.S.W. to shiner ne/s power pole.

7/25/88 R.W., S.K.
 83.06' W.N.W. to nail/shiner se/s telephone pole.
 41.78' S.E. to nail/shiner ne/s power pole. NEW
 74.01' S.S.E. to duplex n/s maple.
 45.38' S.W. to nail/shiner ne/s power pole.

9/24/79 R.W., J.J., C.S.
 B - Found iron pin 0.10' south of top center of stone (4"x5"x22") 16" below road surface. Removed iron pin. Placed center punched RR spike over top center of stone. Pk's 6' north and west. Stone is 1.8' north of south edge 18' pavement.

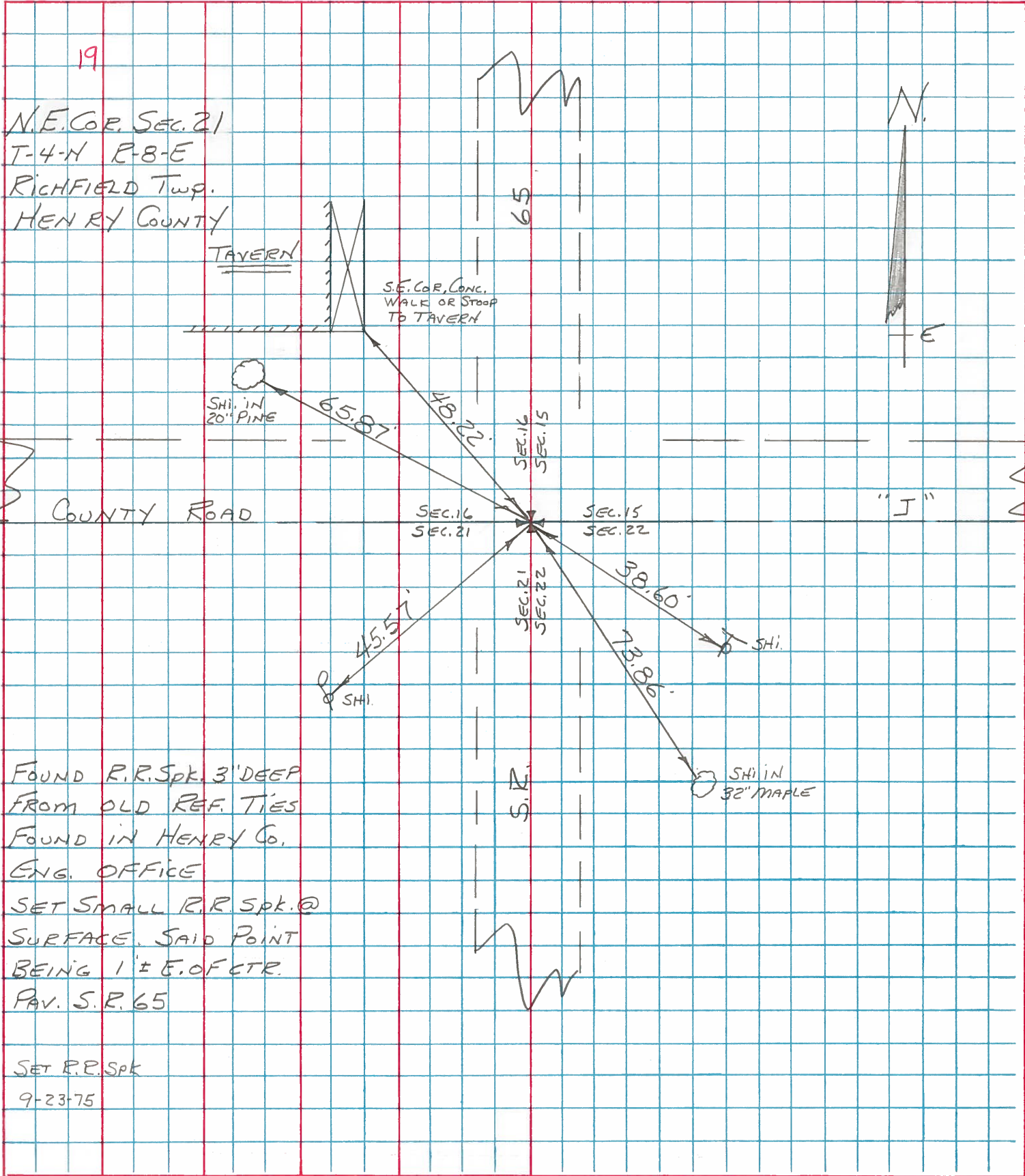
23.28' N. to "+" SW corner catch basin. (P)
 27.22' N.N.E. to duplex nw/s telephone pole.
 101.65' E.N.E. to duplex s/s 24" maple.

7/25/88 R.W., S.K.
 20.80' N.W. to 5/8" iron pin at north edge pavement.
 23.30' N. to "+" SW corner catch basin. (P)
 27.27' N.N.E. to duplex nw/s telephone pole.
 22.66' N.E. to 5/8" iron pin at north edge pavement.

PERSONNEL	TITLE	PERSONNEL	TITLE
BURNSIDE			
SMITH			
BOWERS			
MEAD			

COUNTY HENRY DATE 11-26-74
 S. R. 65 WEATHER CLEAR
 (RICHFIELD TWP)
 SEC. NE. COR. SEC. 21 TEMP. +30°

DESCRIPTION REF. TO SEC. COR. (WESTHOPE) JOB NO. _____
 LEFT CENTER LINE RIGHT



FOUND R.R. Spk. 3' DEEP
 FROM OLD REF. TIES
 FOUND IN HENRY Co.
 ENG. OFFICE
 SET SMALL R.R. Spk. @
 SURFACE. SAID POINT
 BEING 1' ± E. OF CTR.
 PAV. S. R. 65
 SET R.R. Spk
 9-23-75

PERSONNEL	TITLE	PERSONNEL	TITLE
BURNSIDE			
SMITH			
BOWERS			

COUNTY HENRY DATE 4-25-74

S. R. 65 WEATHER PT. CLOUDY

SEC. _____ TEMP. +44°

DESCRIPTION CONTROL TIES JOB NO. _____

