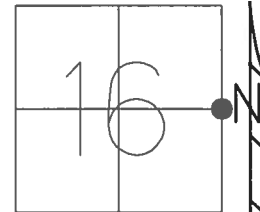


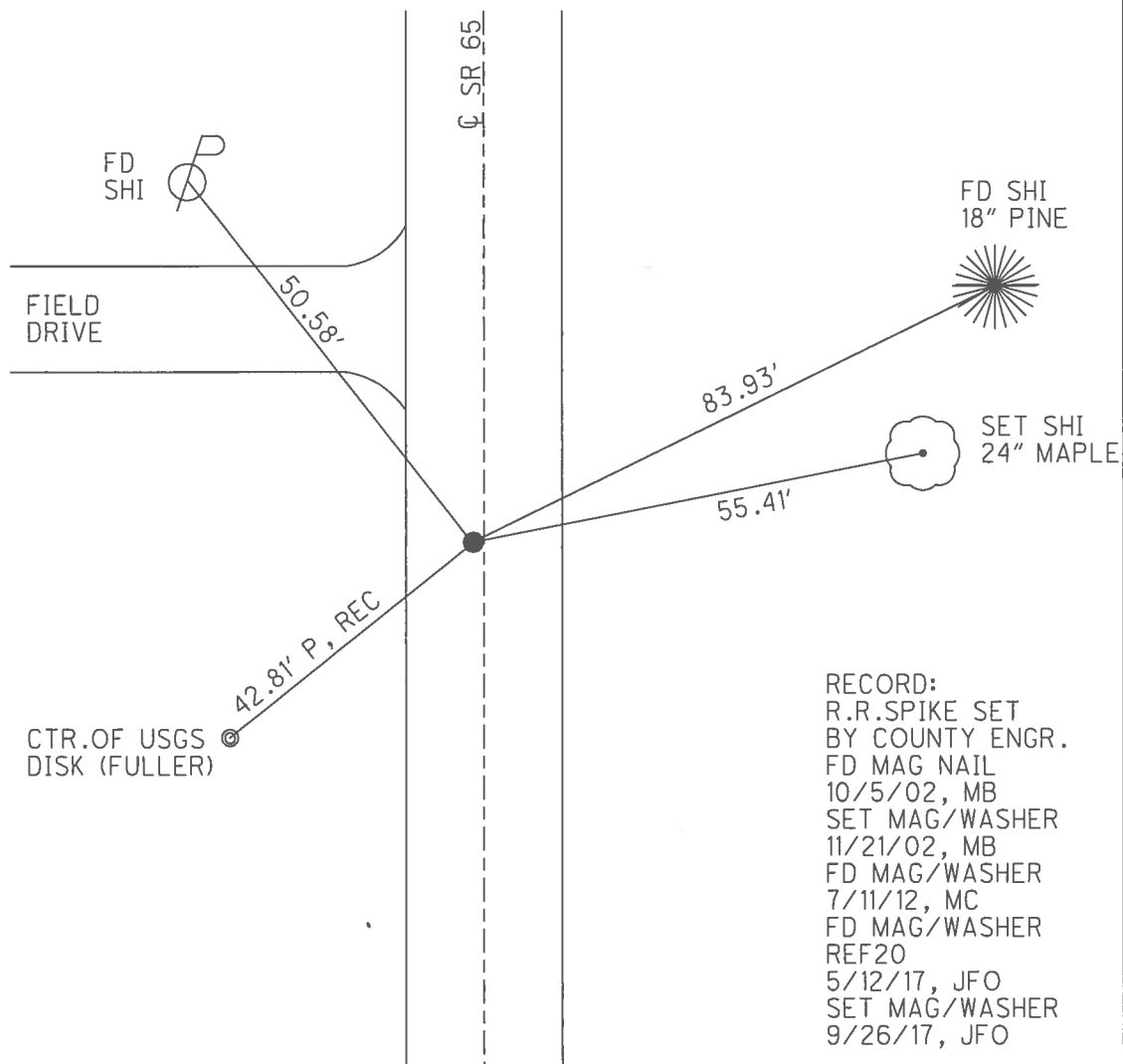
O.D.O.T. DISTRICT 2 SURVEY OFFICE (USE ONLY)

PERSONNEL	REFERENCE NO.	<u>20</u>	SHEET	<u>23</u>	OF	<u>42</u>
NOTES	RHOADES	DATE	<u>5/9/17</u>	ROUTE	<u>SR 65</u>	
H.C.	O'DONNELL	WEATHER	<u>SUNNY</u>	COUNTY	<u>HENRY</u>	
R.C.	RHOADES	TEMP.	<u>47°</u>	TOWNSHIP	<u>RICHFIELD</u>	
				SECTION	<u>16</u>	
				T	<u>4</u>	N
				R	<u>8</u>	E

TYPE MONUMENT MAG/WASHER
~~ON SURFACE~~ - BELOW ON
 LEFT - ☉ PAV'T - ~~RIGHT~~ 0.5'
9.3' TO LT EDGE PAVEMENT
 S.L.M. 503+05



GRID: NORTHING: 600395.657 EASTING: 1572587.396

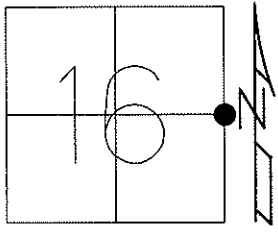


RECORD:
 R.R.SPIKE SET
 BY COUNTY ENGR.
 FD MAG NAIL
 10/5/02, MB
 SET MAG/WASHER
 11/21/02, MB
 FD MAG/WASHER
 7/11/12, MC
 FD MAG/WASHER
 REF20
 5/12/17, JFO
 SET MAG/WASHER
 9/26/17, JFO

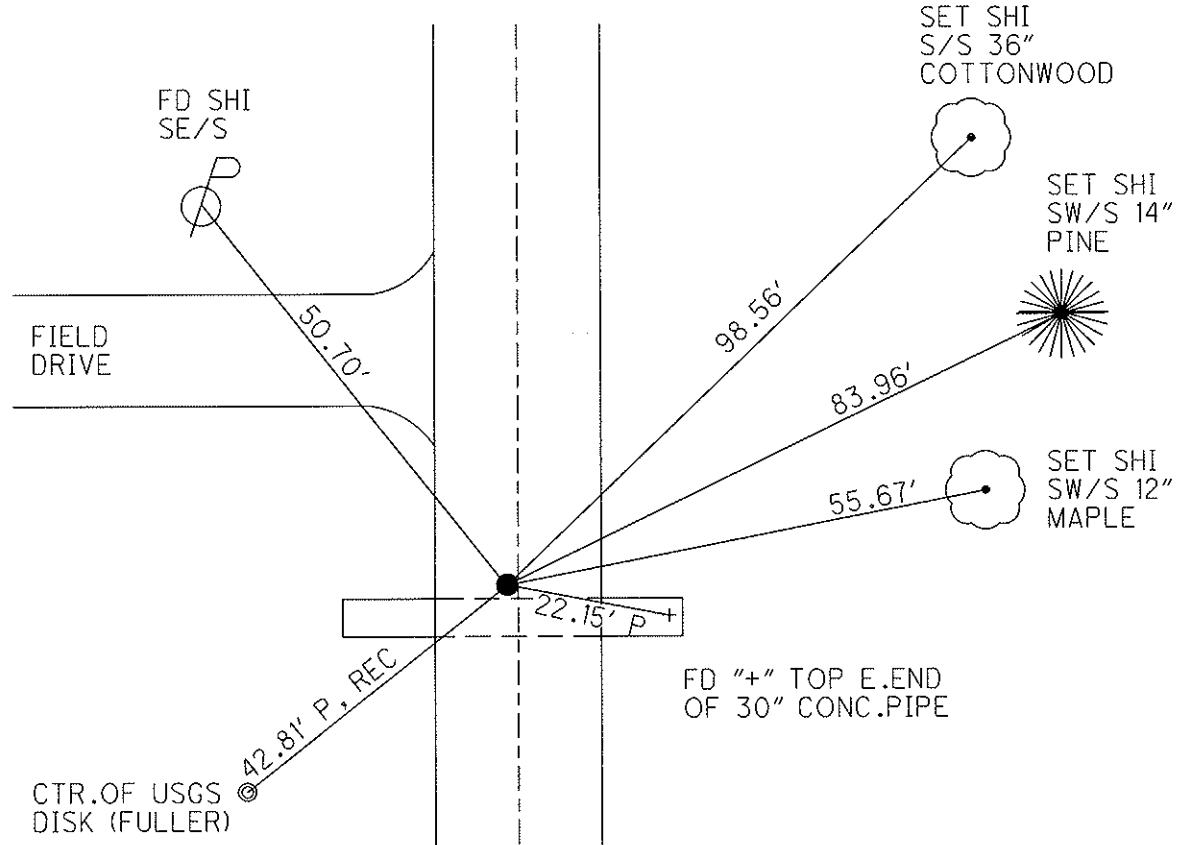
O.D.O.T. DISTRICT 2 SURVEY OFFICE (USE ONLY)

PERSONNEL	REFERENCE NO. <u>20</u>	SHEET <u>23</u> OF <u>42</u>
NOTES <u>BARNHESEL</u>	DATE <u>10/5/02</u>	ROUTE <u>SR 65</u>
H.C. <u>CANTERBURY</u>	WEATHER <u>SUNNY</u>	COUNTY <u>HENRY</u>
R.C. <u>BARNHESEL</u>	TEMP. <u>75°</u>	TOWNSHIP <u>RICHFIELD</u>
		SECTION <u>16</u>
		T <u>4</u> N R <u>8</u> E

TYPE MONUMENT MAG / WASHER
~~ON SURFACE~~ - BELOW 3"
 LEFT - Q PAV'T - ~~RIGHT~~ 0.5'
9.3' TO LT. EDGE PAVEMENT
 S.L.M. 503+05



Grid: Northing: 600395.688 Easting: 1572587.353



RAILROAD SPIKE SET BY HENRY CO
 ENGINEER'S OFFICE WAS REMOVED
 DURING PAVING PROJECT
 DATE: 10-05-02

SR 65

11-21-02 RESET MAG/WASHER, MB
 POINT CHIPPED OUT, 3-15-13
 07-11-12 GPS: REF 20
 03-15-13 GPS: FIN 20, MC

O.D.O.T. DISTRICT 2 SURVEY OFFICE

PERSONNEL

REFERENCE NO. 20

SHEET 21 OF 29

NOTES BARNHISEL RC

H.C. CANTERBURY

DATE 10-05-02

ROUTE 65

R.C. _____

WEATHER SUNNY

COUNTY HENRY

TEMP. +75°

TOWNSHIP RICHFIELD

SECTION 16

T 4 N R 8 E

TYPE MONUMENT Cg RR Spk

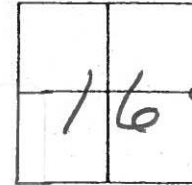
~~ON SURFACE~~ - BELOW 3"

LEFT - ~~C PAVT.~~ - RIGHT 0.5'

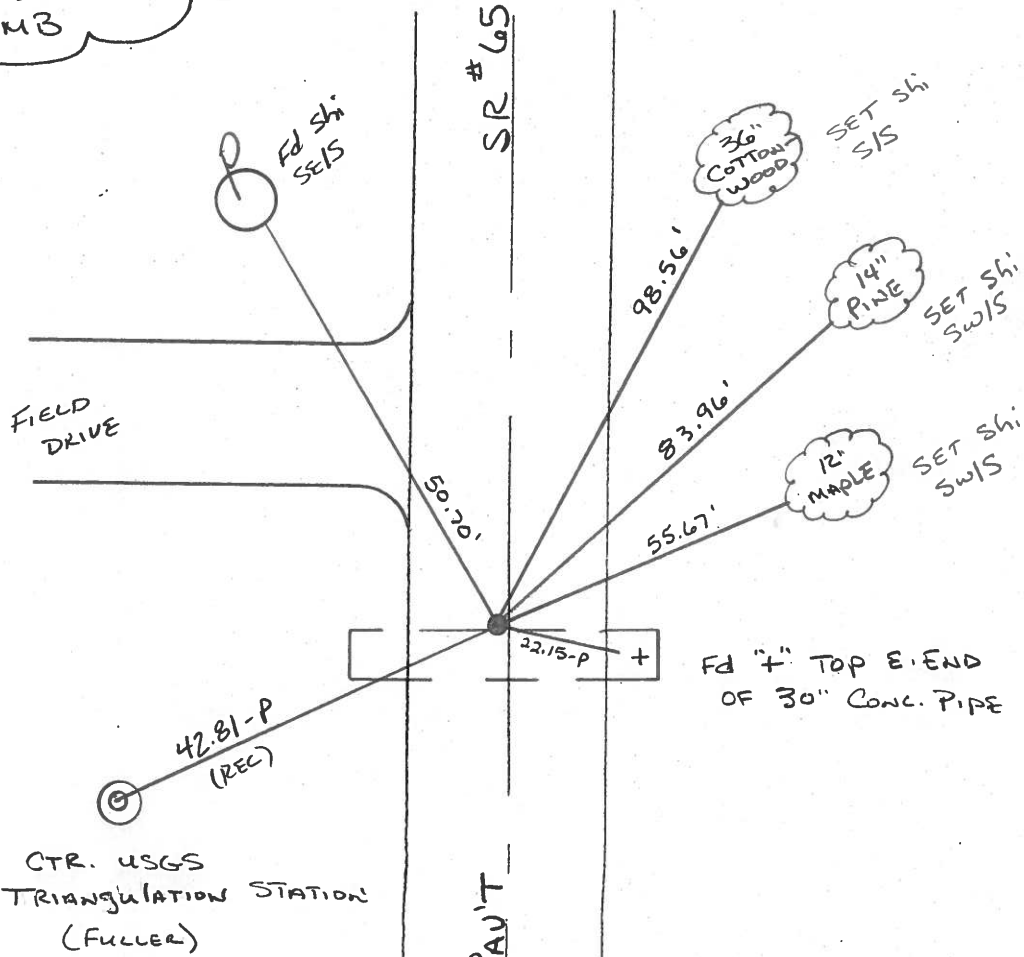
9.3' TO LT. EDGE PAVEMENT

S.L.M. 503+05

Mag Nail Removed,
Railroad Spike Reset
Date _____



Reset Mag Nail & Washer
11-21-02
MB



Railroad Spike Set by Henry Co.
Engineer's Office was Removed
During Paving Project
Date 10-05-02

OD.O.T. DISTRICT 2 SURVEY OFFICE

SHEET _____ OF _____

County HENRY S.R. 65

Date 1-27-84

Township RICHFIELD

Weather Cloudy

Section 16

Temp. 30°

T4N, R8E

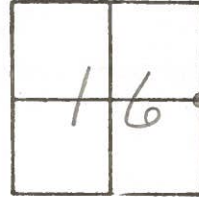
Personnel HOFFMAN

LOEHRKE H.C.

HOUSEHOLDER R.C.

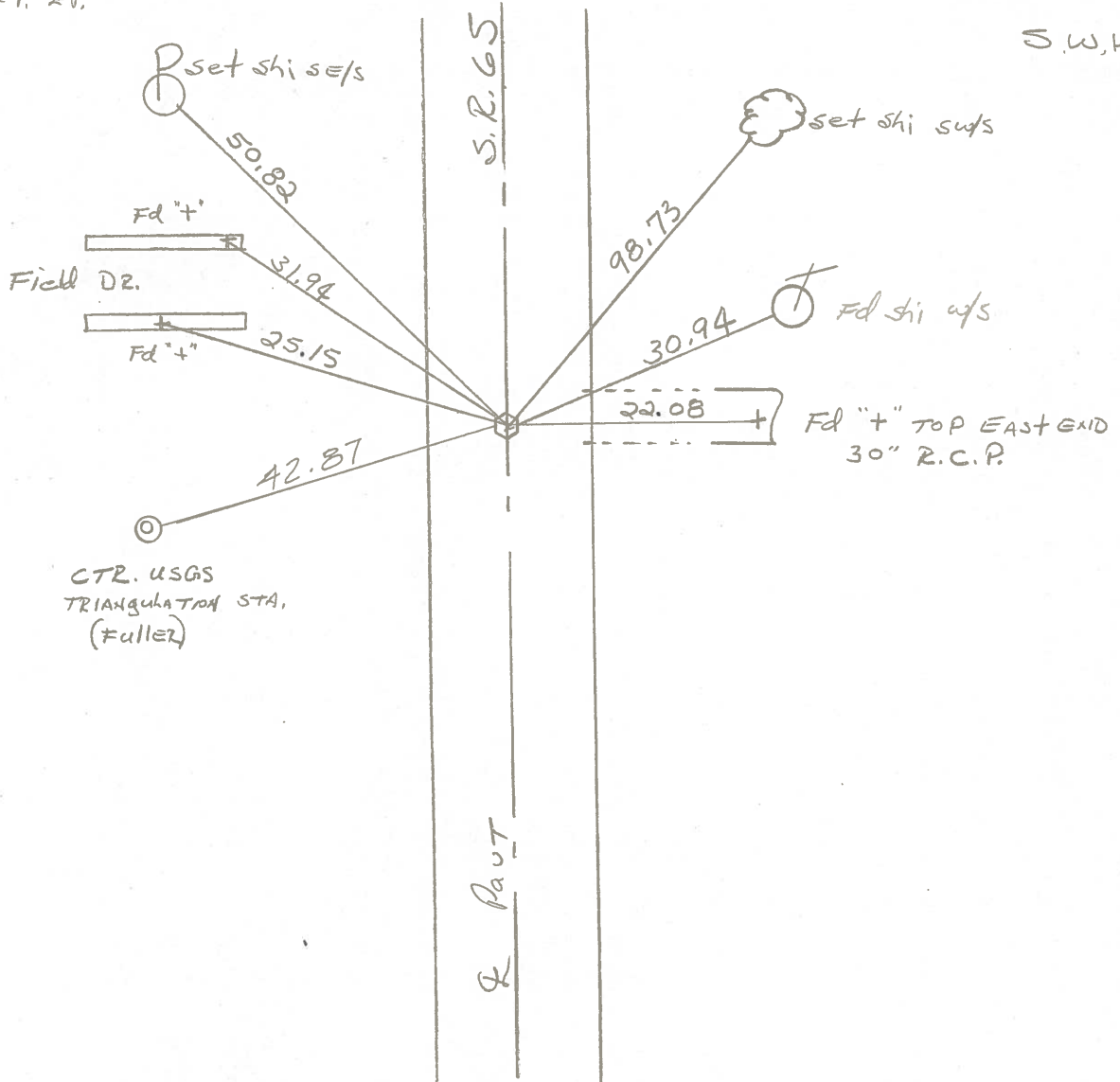
BARNHISEL

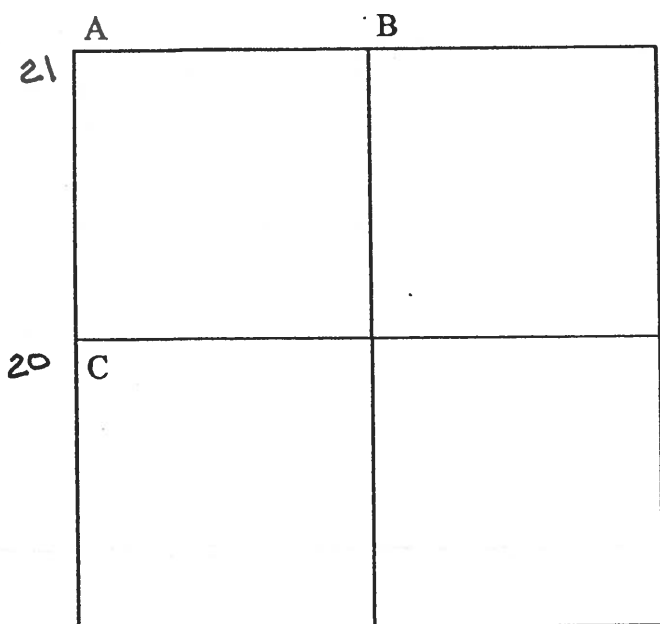
20



Fd R.R. SPK set by COUNTY
ON R PAUT
8.9' TO RT. EP.
9.3' TO LT. EP.

SLM 503 + 14
SET PK/WASHER
8-28-84
S.W.H.





COUNTY: HENRY

TOWNSHIP: RICHFIELD

T- 4 -N R- 8 - E

SECTION: 15

20 7/31/79 R.W., J.J., G.M.
 C - Found recorded RR spike 1.30' east and 0.05' north of top center of stone (8"x9"x10") 15" below road surface. Placed center punched RR spike on surface over to center of stone. Pk's 6' north and east. Stone is 9.2' east of west edge 18' pavement.

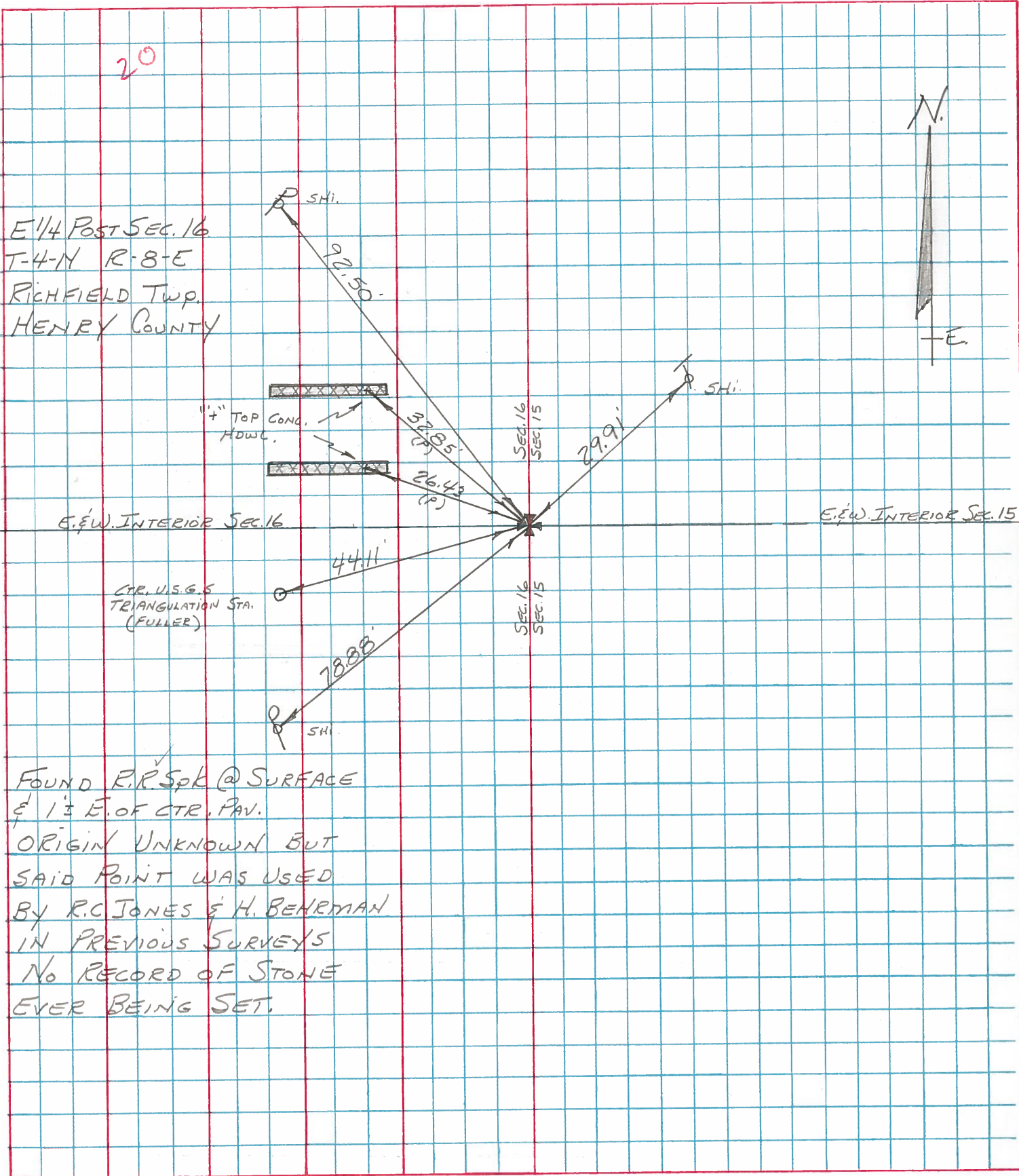
- 25.13' W. to "+" in conc. headwall. (P)
- 31.87' W.N.W. to "+" in conc. headwall. (P)
- 91.85' N.N.W. to shiner se/s power pole.
- 30.91' E.N.E. to shiner sw/s telephone pole.
- 78.20' S.S.W. to shiner ne/s power pole. GONE
- 42.82' W.S.W. to center USGS Sta. "FULLER". (P)
- 22.05' E.S.E. to "+" east end 30" RCP.

- 7/20/88 R.W., S.K., K.A.
- 25.13' W. to "+" in conc. headwall. (P)
- 32.00' N.W. to "+" in conc. headwall. (P)
- 50.83' N.W. to shiner se/s power pole. NEW
- 30.96' N.E. to shiner sw/s telephone pole.
- 22.07' E.S.E. to "+" east end conc. pipe. (P)
- 42.85' W.S.W. to center USGS Sta. "FULLER 1947". (P)

PERSONNEL	TITLE	PERSONNEL	TITLE
BURNSIDE			
SMITH			
BOWERS			
MEAD			

COUNTY HENRY DATE 11-26-74
 S. R. 65 WEATHER CLEAR
 SEC. E 1/4 Post Sec. 16 (RICHFIELD Twp.) TEMP. +35°

DESCRIPTION REF. TO SEC. CORNER JOB NO. _____
 LEFT CENTER LINE RIGHT

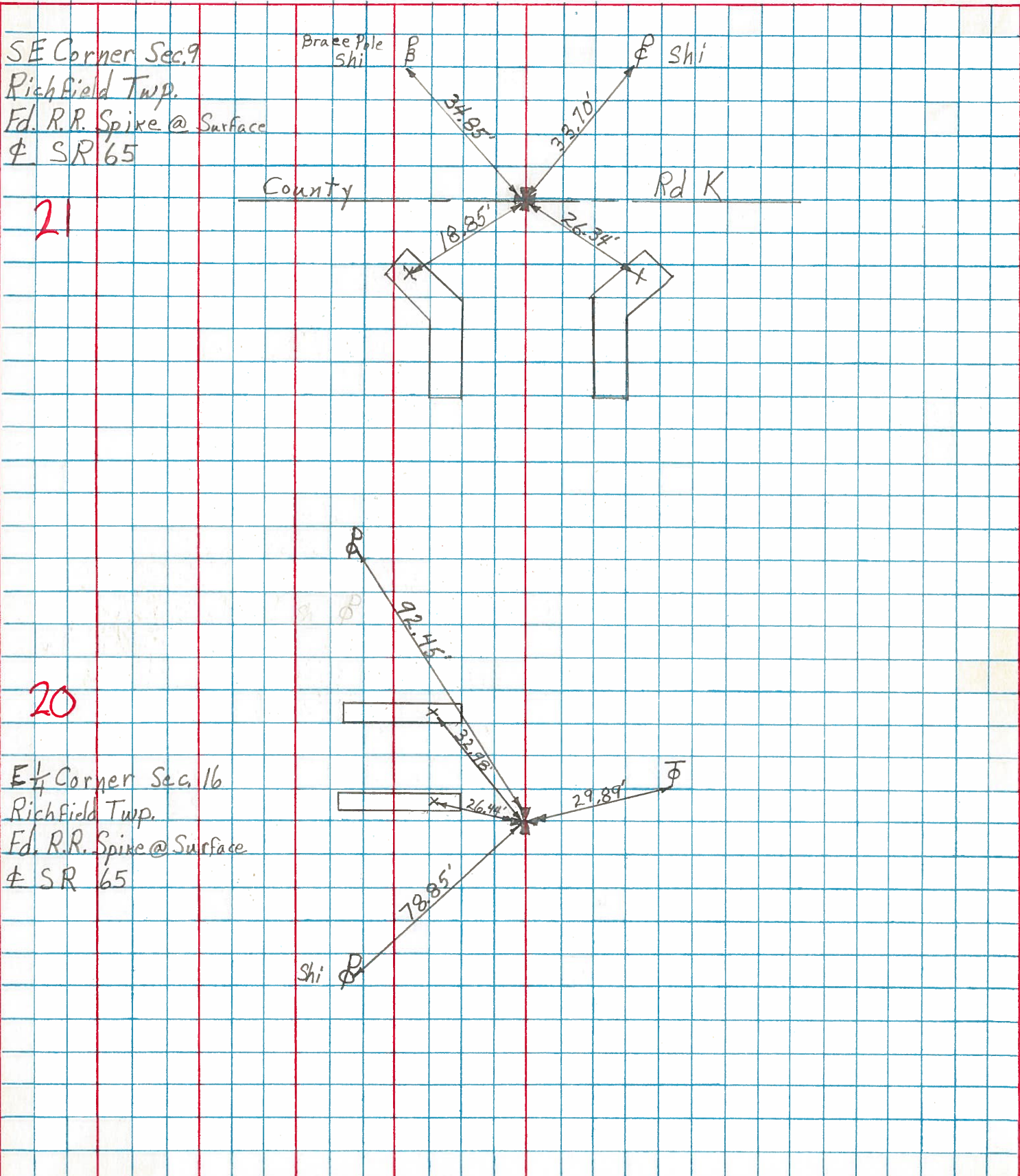


FOUND R.R. Spk @ SURFACE
 1/3 E. OF CTR. PAV.
 ORIGIN UNKNOWN BUT
 SAID POINT WAS USED
 BY R.C. JONES & H. BEHRMAN
 IN PREVIOUS SURVEYS
 NO RECORD OF STONE
 EVER BEING SET.

PERSONNEL	TITLE	PERSONNEL	TITLE
Smith			
Bowers			
Mead			

COUNTY Henry DATE 4-16-1974
 S. R. 65 WEATHER Clear-Mild
 SEC. Richfield Twp. TEMP. 52°

DESCRIPTION _____ LEFT _____ CENTER LINE _____ RIGHT _____ JOB NO. _____



SE Corner Sec. 9
 Richfield Twp.
 Ed. R.R. Spike @ Surface
 ⚡ SR 65

21

E 1/4 Corner Sec. 16
 Richfield Twp.
 Ed. R.R. Spike @ Surface
 ⚡ SR 65

20