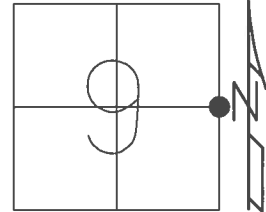


O.D.O.T. DISTRICT 2 SURVEY OFFICE (USE ONLY)

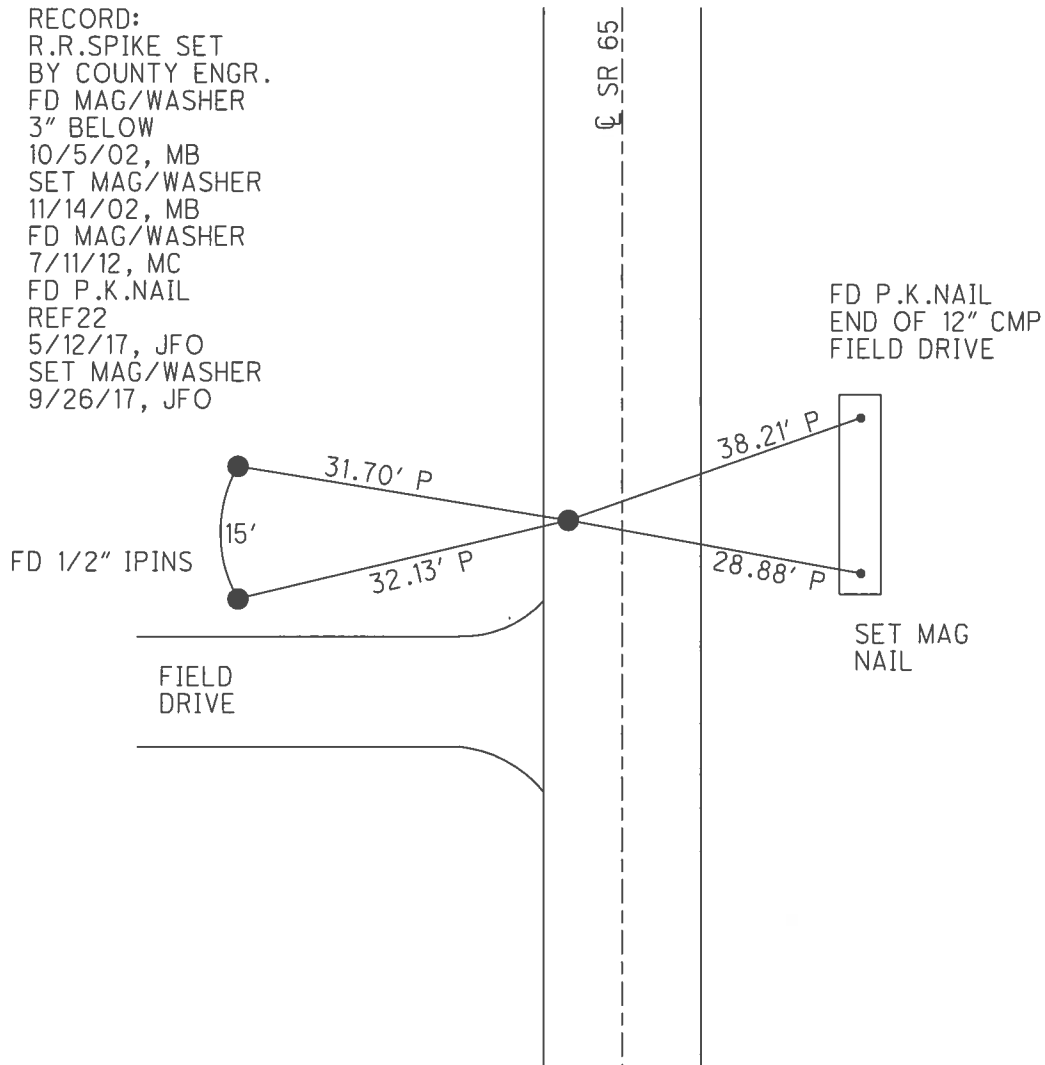
PERSONNEL	REFERENCE NO.	22	SHEET	25	OF	42
NOTES	RHOADES	DATE	5/9/17	ROUTE	SR 65	
H.C.	O'DONNELL	WEATHER	SUNNY	COUNTY	HENRY	
R.C.	RHOADES	TEMP.	47°	TOWNSHIP	RICHFIELD	
				SECTION	9	
				T	4	N
				R	8	E

TYPE MONUMENT P.K.NAIL
 ON SURFACE - ~~BELOW~~ ON _____
 LEFT - Q PAV'T - ~~RIGHT~~ 7.5'
2.2' TO LT EDGE PAVEMENT
 S.L.M. 555+99



GRID: NORTHING: 605681.637 EASTING: 1572610.688

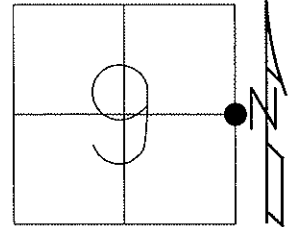
RECORD:
 R.R.SPIKE SET
 BY COUNTY ENGR.
 FD MAG/WASHER
 3" BELOW
 10/5/02, MB
 SET MAG/WASHER
 11/14/02, MB
 FD MAG/WASHER
 7/11/12, MC
 FD P.K.NAIL
 REF22
 5/12/17, JFO
 SET MAG/WASHER
 9/26/17, JFO



O.D.O.T. DISTRICT 2 SURVEY OFFICE (USE ONLY)

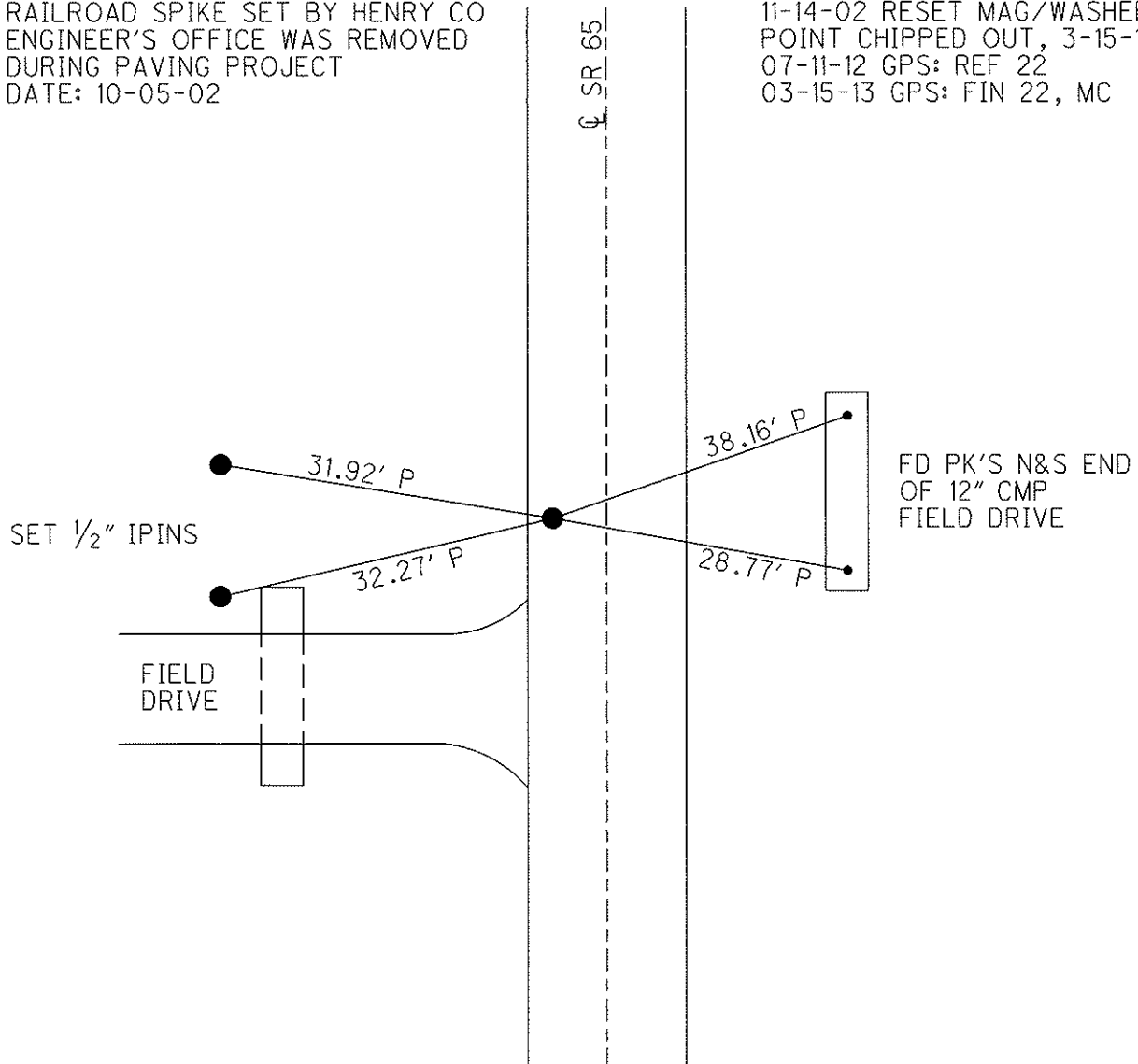
PERSONNEL	REFERENCE NO. <u>22</u>	SHEET <u>25</u> OF <u>42</u>
NOTES <u>BARNHESEL</u>	DATE <u>10/5/02</u>	ROUTE <u>SR 65</u>
H.C. <u>CANTERBURY</u>	WEATHER <u>SUNNY</u>	COUNTY <u>HENRY</u>
R.C. <u>BARNHESEL</u>	TEMP. <u>75°</u>	TOWNSHIP <u>RICHFIELD</u>
		SECTION <u>9</u>
		T <u>4</u> N R <u>8</u> E

TYPE MONUMENT MAG / WASHER
~~ON SURFACE~~ - BELOW 3"
 LEFT - Q PAV'T - ~~RIGHT~~ 8.6'
1.1' TO LT EDGE PAVEMENT
 S.L.M. 555+99
 Grid: Northing: 605681.646 Easting: 1572610.654



RAILROAD SPIKE SET BY HENRY CO
 ENGINEER'S OFFICE WAS REMOVED
 DURING PAVING PROJECT
 DATE: 10-05-02

11-14-02 RESET MAG/WASHER, MB
 POINT CHIPPED OUT, 3-15-13
 07-11-12 GPS: REF 22
 03-15-13 GPS: FIN 22, MC



O.D.O.T. DISTRICT 2 SURVEY OFFICE

PERSONNEL _____

REFERENCE NO. 22

SHEET 23 OF 29

NOTES BARNHISEL RC

H.C. CANTERBURY

DATE 10-05-02

ROUTE 65

R.C. _____

WEATHER Sunny

COUNTY HENRY

TEMP. +75°

TOWNSHIP RICHFIELD

SECTION 9

T 4 N R 8 E

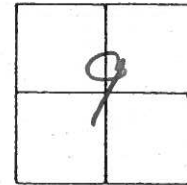
TYPE MONUMENT lg RR Spk

~~ON SURFACE~~ - BELOW 3"

LEFT-~~Q~~ PAV'T. - ~~RIGHT~~ 8.6'

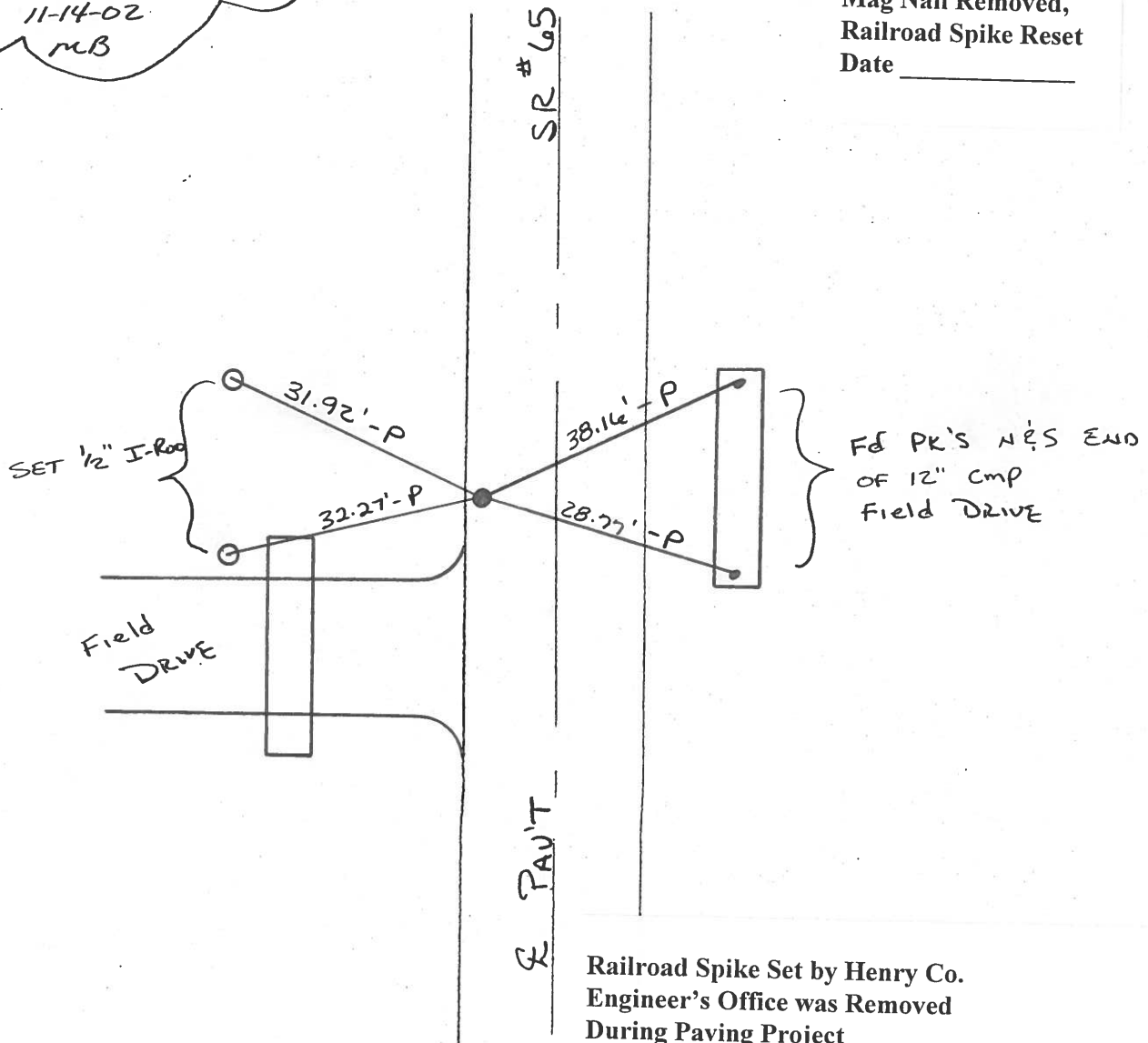
1.1' TO LT. EDGE PAVEMENT

S.L.M. 555+99



Reset Mag Nail & Washer
11-14-02
MB

Mag Nail Removed,
Railroad Spike Reset
Date _____



Railroad Spike Set by Henry Co.
Engineer's Office was Removed
During Paving Project
Date 10-05-02

ODOT. DISTRICT 2 SURVEY OFFICE

SHEET _____ OF _____

County HENRY S.R. 65

Date 1-27-84

Township RIGHTFIELD

Weather Cloudy

Section 9

Temp. 30°

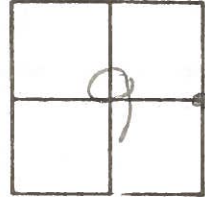
T4N, R8E

Personnel HOFFMAN

LOEHRKE H.C.

#22 HOUSEHOLDER R.C.

BARNHISEL



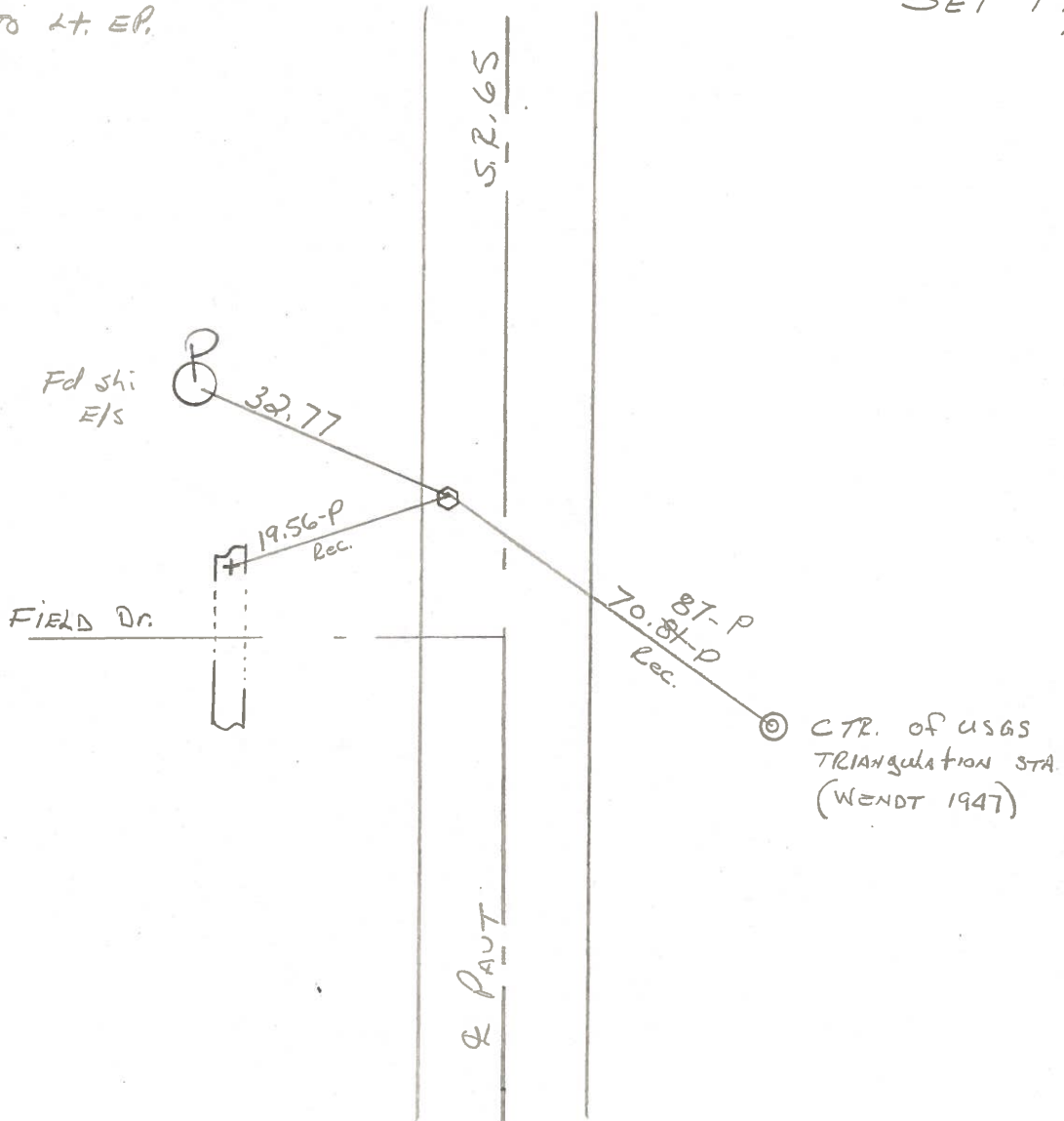
Fd R.R. Spk set by COUNTY/
ON SURFACE
7.9' Lt. of & PAUT
1.4' TO Lt. EP.

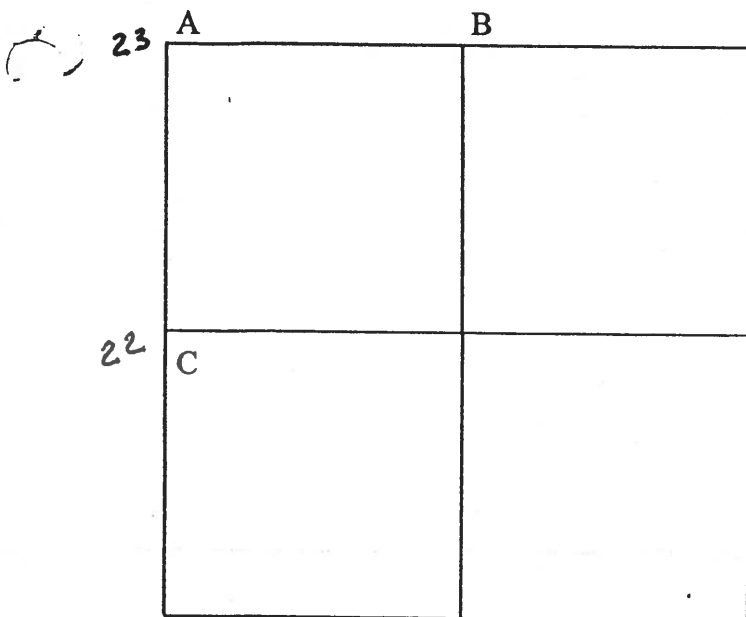
S.L.M. 556+01

SET PK/WASHER

8-28-84

S.W.H.





COUNTY: HENRY

TOWNSHIP: RICHFIELD

T- 4 -N R-8 - E

SECTION: 10

8/29/79 R.W., J.J., C.S.

B - Found recorded Pk nail on North Line, Sec. 10 and midway between NE corner and NW corner, Sec. 10. N¹/₄ Post of Sec.10 falls on bridge deck. Removed Pk and placed center punched boat spike in bridge deck. Pk's 6' north and west. Boat spike is 7.8' north of south edge of bridge deck.

- 33.01' N.W. to SW corner west steel guard rail post.
- 21.62' N.E. to SE corner east steel guard rail post.
- 11.86' S.E. to NE corner east steel guard rail post.
- 28.33' S.W. to NW corner west steel guard rail post.
- 45.87' S.S.W. to duplex nw/s power pole.

7/18/88 R.W., S.K., K.A.

- 33.00' N.W. to SW corner steel guard rail post.
- 21.65' N.E. to SE corner steel guard rail post.
- 11.89' S.E. to NE corner steel guard rail post.
- 28.35' S.W. to NW corner steel guard rail post.
- 48.48' S.W. to duplex nw/s power pole.

7/31/79 R.W., J.J., G.M.

22 C - Found recorded RR spike over iron pipe, over high point of stone (6"x11"x17") 12" below road surface. Removed iron pipe. Placed center punched RR spike on surface over high point of stone. Pk's 6' north and east. Stone is 1.0' east of west edge 18' pavement.

- 19.56' W.S.W. to "+" top north end 24" RCP. (P)
- 32.51' W. to shiner e/s power pole.
- 70.81' S.S.E. to center USCG Sta. (P) DESTROYED

7/14/88 R.W., S.K., K.A.

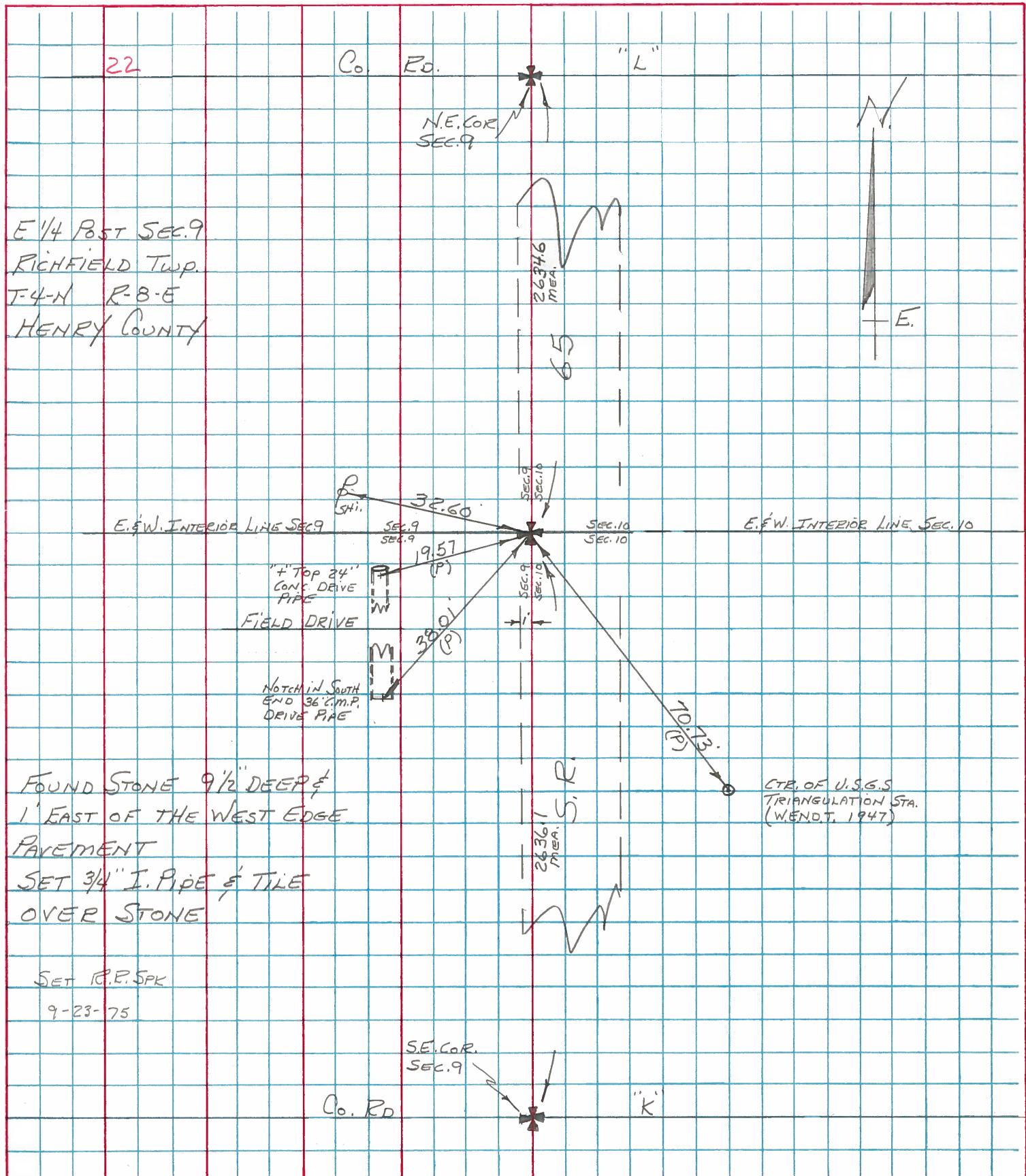
Found nail/shiner on surface.

- 38.12' N.E. to Pk nail north end CMP. (P)
- 28.71' E.S.E. to Pk nail south end CMP. (P)
- 19.55' W.S.W. to "+" north end conc. pipe. (P)
- 32.71' W. to shiner e/s power pole.

PERSONNEL TITLE PERSONNEL TITLE
 BURNSIDE _____
 SMITH _____
 BOWERS _____
 MEAD _____

COUNTY HENRY DATE 11-22-74
 S. R. 65 WEATHER CLEAR
 SEC. E 1/4 Post SEC. 9 TEMP. 45°

DESCRIPTION REF. TO SECTION CORNER (RICHFIELD TWP) JOB NO.
 LEFT CENTER LINE RIGHT



E 1/4 Post SEC. 9
 RICHFIELD Twp.
 T-4-N R-8-E
 HENRY COUNTY

FOUND STONE 9 1/2" DEEP &
 1' EAST OF THE WEST EDGE
 PAVEMENT
 SET 3/4" I. PIPE & TILE
 OVER STONE

SET R.P. SPK
 9-23-75

CTR. OF U.S.G.S
 TRIANGULATION STA.
 (WENDT, 1947)