



O.D.O.T. DISTRICT 2 SURVEY OFFICE (USE ONLY)

PERSONNEL	REFERENCE NO. <u>23</u>	SHEET <u>26</u> OF <u>42</u>
NOTES <u>BARNHISEL</u>	DATE <u>10/7/02</u>	ROUTE <u>SR 65</u>
H.C. <u>CANTERBURY</u>	WEATHER <u>SUNNY</u>	COUNTY <u>HENRY</u>
R.C. <u>BARNHISEL</u>	TEMP. <u>55°</u>	TOWNSHIP <u>RICHFIELD</u>
		SECTION <u>9</u>
		T <u>4</u> N R <u>8</u> E

TYPE MONUMENT MAG NAIL

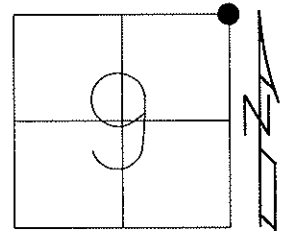
~~ON SURFACE~~ - BELOW 3'

LEFT - ℄ PAV'T - ~~RIGHT~~ 5.0', (10' S. OF ℄ WEST)

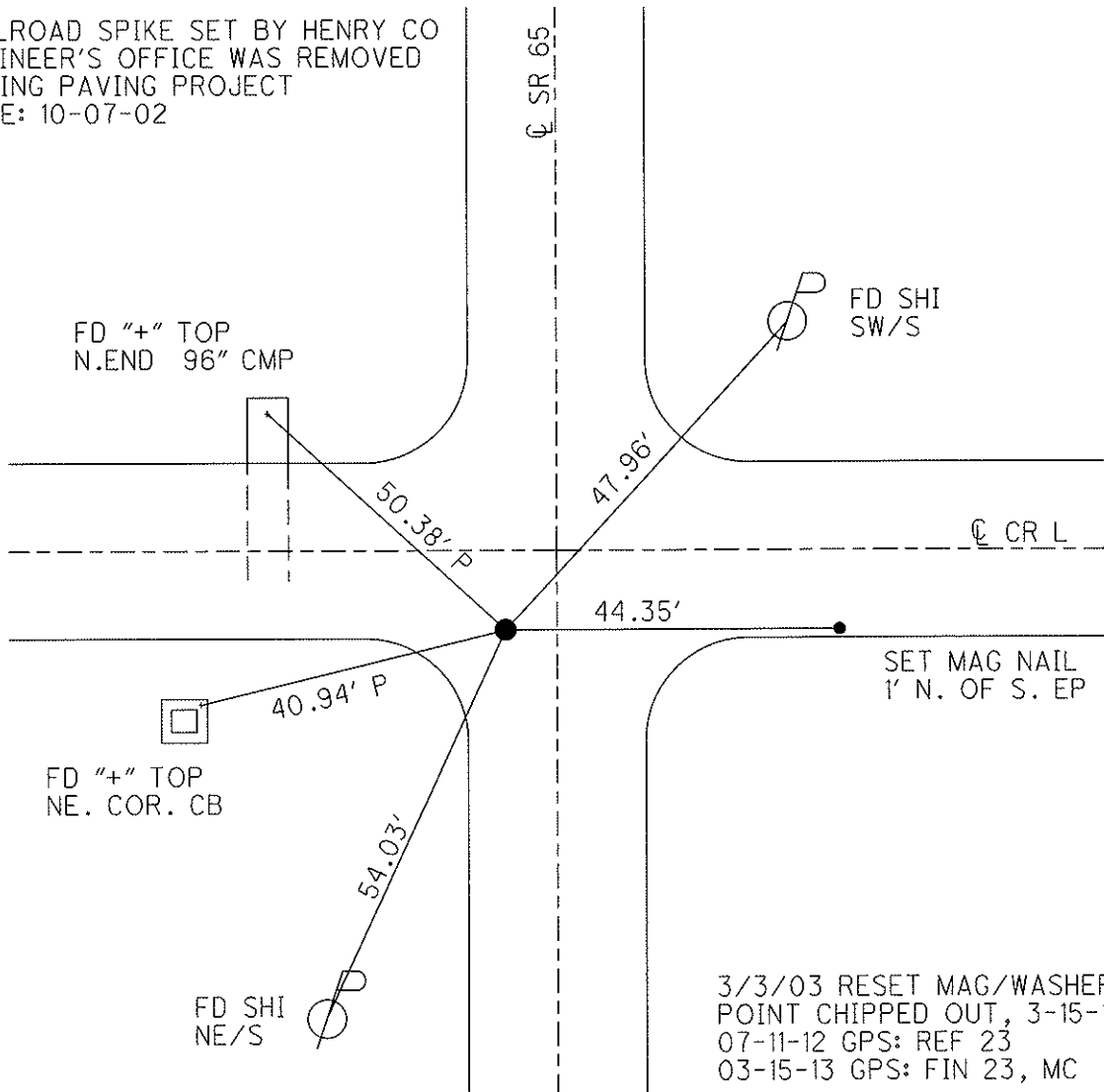
- TO - EDGE PAVEMENT

S.L.M. 582+25

Grid: Northing: 608315.669 Easting: 1572631.632



RAILROAD SPIKE SET BY HENRY CO  
ENGINEER'S OFFICE WAS REMOVED  
DURING PAVING PROJECT  
DATE: 10-07-02





# O.D.O.T. DISTRICT 2 SURVEY OFFICE

PERSONNEL

REFERENCE NO. 23

SHEET      OF     

NOTES BARNHISEL ✓

10-07-02

H.C. " " MC

DATE 4-11-90

ROUTE 65

R.C. HOFFMAN MB

WEATHER SUNNY ✓

COUNTY HENRY

TEMP. +35° +55°

TOWNSHIP RICHFIELD

SECTION 9

T4 N R 8 E

*lg RR Spk*

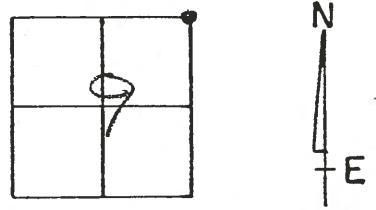
TYPE MONUMENT P.K. & Washer *Removed*

ON SURFACE - BELOW yes 3"

LEFT- & PAV'T. - RIGHT 5.0

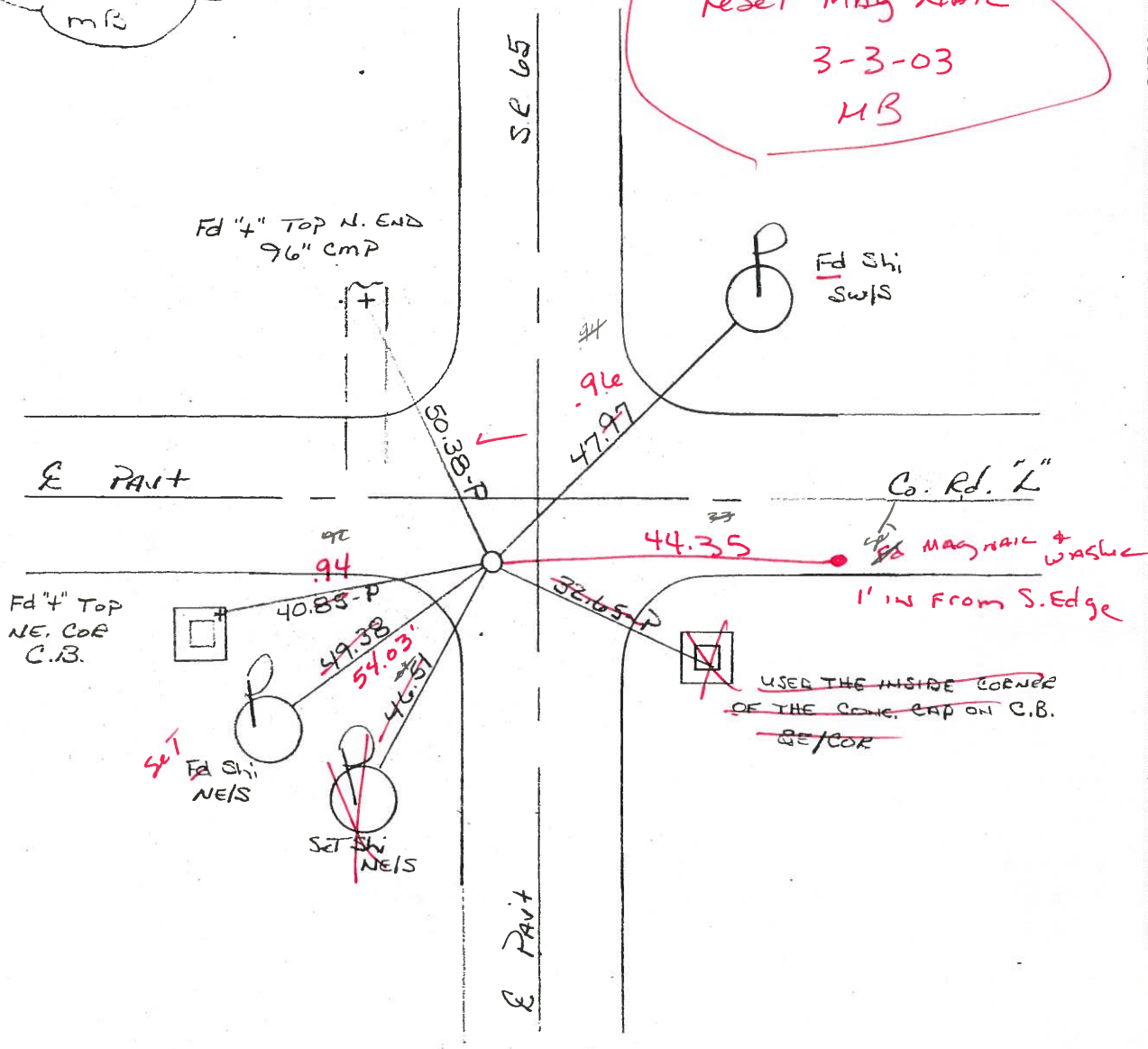
- TO - EDGE PAVEMENT 10.0 S. of E Co Rd "L" west

S.L.M. ~~582+26~~ 582+25



Set P.K. & Washer  
5-15-90  
MB

*Reset Mag Nail  
3-3-03  
MB*



ODOT. DISTRICT 2 SURVEY OFFICE

SHEET \_\_\_\_\_ OF \_\_\_\_\_

County HENRY S.R. 65

Date 1-27-84

Township RICHFIELD

Weather cloudy

Section 9

Temp. 30°

T4N, R8E

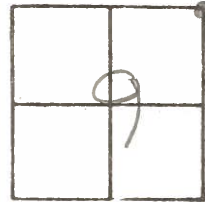
Personnel HOFFMAN

LOEHRKE H.C.

HOUSEHOLDER R.C.

BARNHISEL

# 23



Fd. CTR. PUNCHED R.R. SPK set BY COUNTY

SLM = 582+35

@ surface

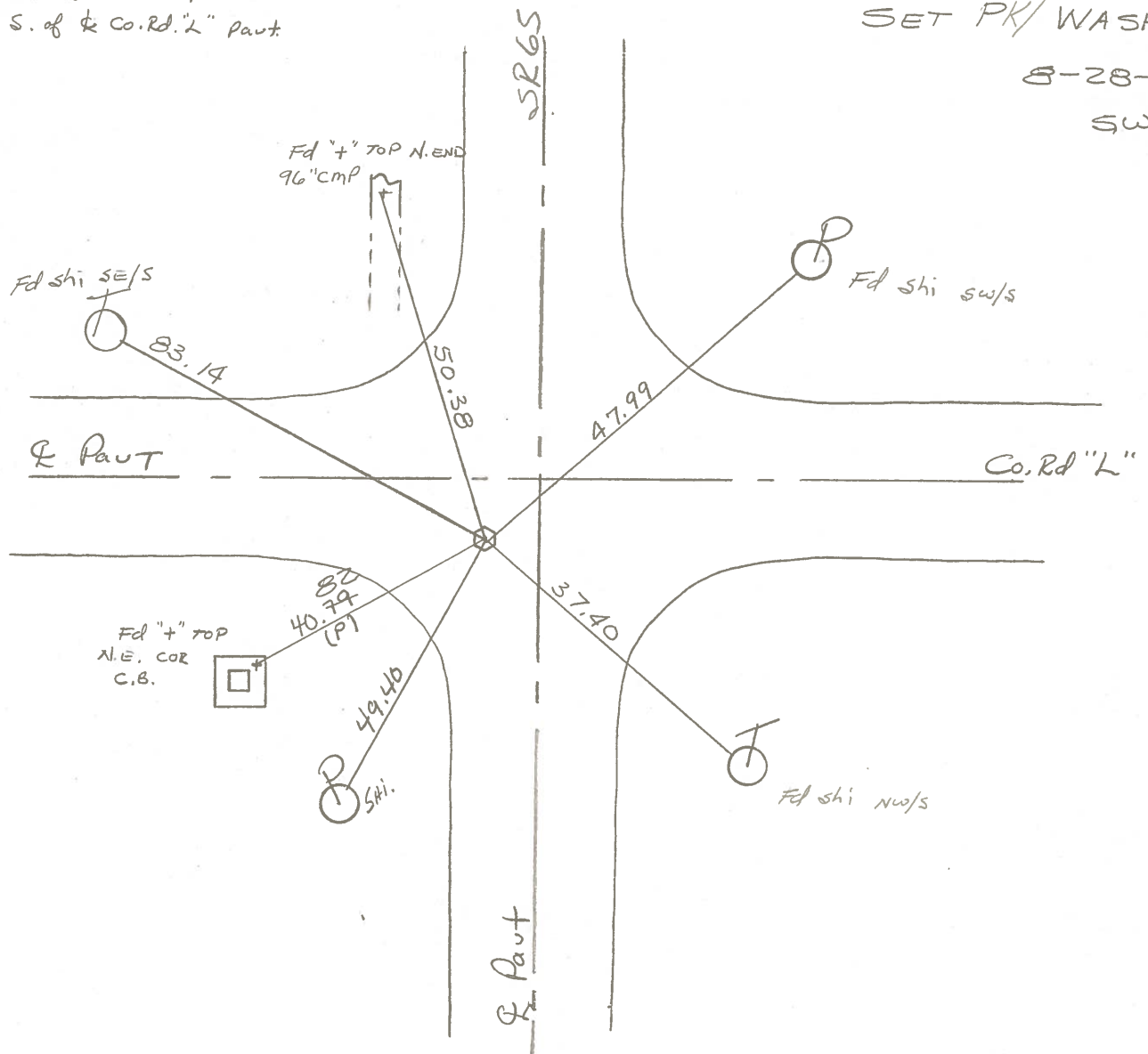
4.5' Lt. & SR65 PAUT.

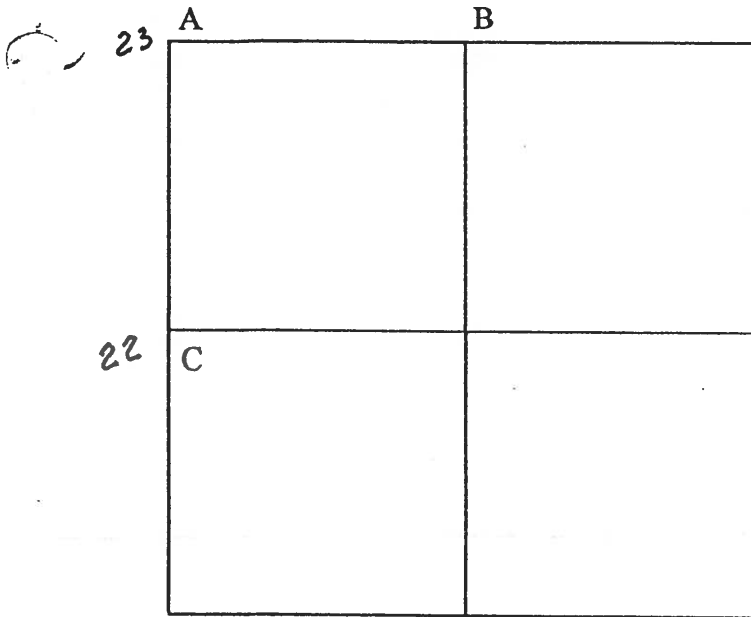
104' S. of & Co. Rd. "L" PAUT.

SET PK/WASHER

8-28-84

SW.H





COUNTY: HENRY

TOWNSHIP: RICHFIELD

T-4-N R-8-E

SECTION: 10

7/31/79 R.W., J.J., G.M.

23 A - Found recorded RR spike 0.09' north and 0.12' west of top center of stone (4"x7"x16") 17" below road surface. Also found two small stones and wood stake. Removed small stones and wood stake. Placed center punched RR spike on surface over top center of stone. Pk's 6' north and east. Stone is 5.0' east of west edge 18' pavement.

50.34' N.N.W. to "+" top north end 96" CMP. (P)

45.02' N.E. to center well casing. (P)

47.85' N.E. to shiner sw/s power pole.

37.36' S.E. to shiner nw/s telephone pole.

49.35' S.W. to shiner ne/s power pole.

40.78' S.W. to "+" NE corner catch basin. (P)

7/18/88 R.W., S.K., K.A.

Found nail/shiner on surface. Pk's 6' north and east.

50.36' N.N.W. to "+" north end CMP. (P)

47.97' N.E. to shiner sw/s power pole.

55.33' N.E. to center USGS Sta. "GILES 1950".(P)

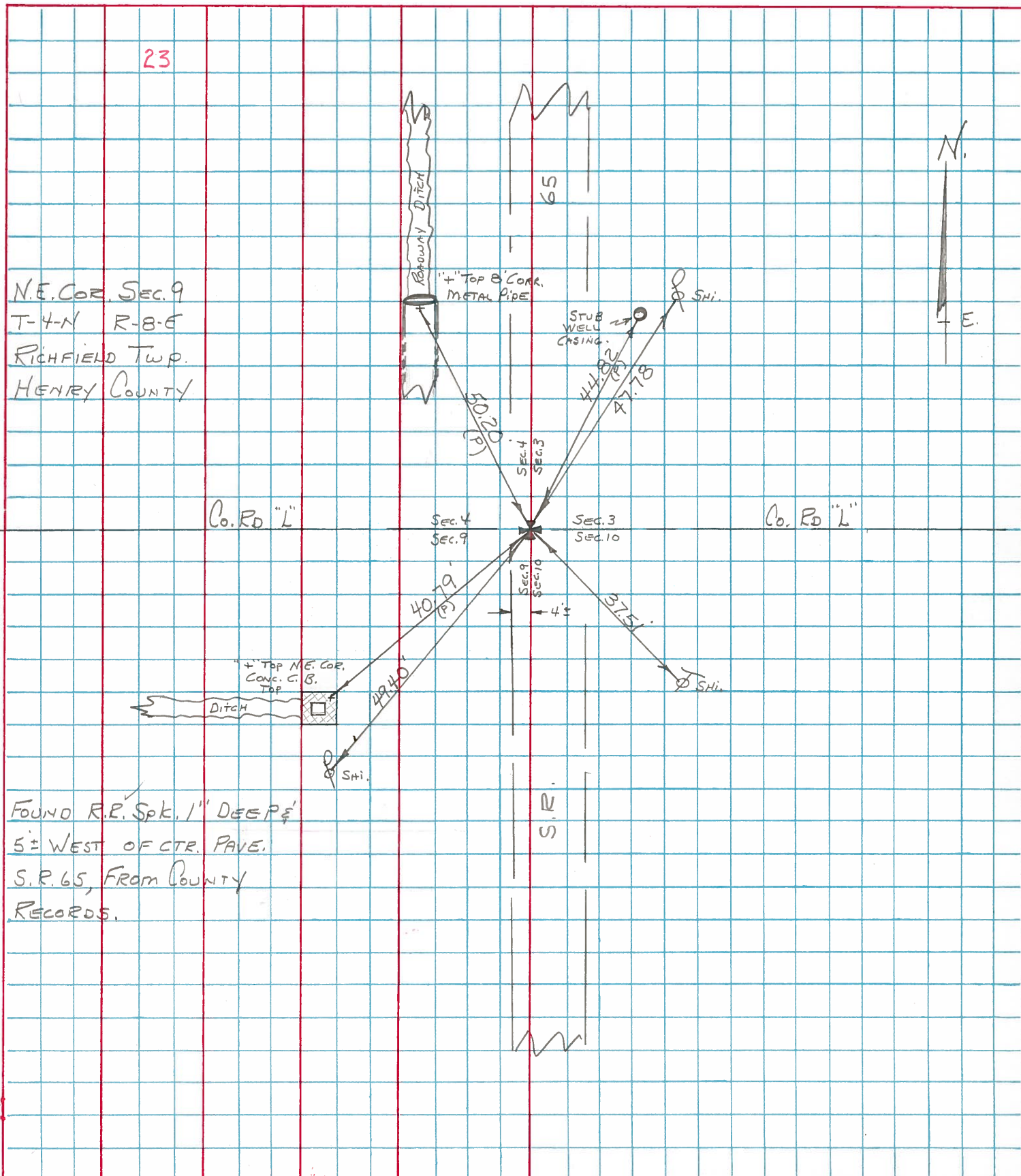
49.37' S.W. to shiner ne/s power pole.

40.82' S.W. to "+" NE corner catch basin. (P)

PERSONNEL	TITLE	PERSONNEL	TITLE
BURNSIDE			
SMITH			
BOWERS			
MEAD			

COUNTY HENRY DATE 4-25-75  
 S. R. 65 WEATHER CLOUDY  
 SEC. N.E. COR. SEC. 9 TEMP. +50°

DESCRIPTION REF. TO SECTION CORNER (RICHFIELD TWP.) JOB NO. \_\_\_\_\_  
 LEFT CENTER LINE RIGHT



N.E. COR. SEC. 9  
 T-4-N R-8-E  
 RICHFIELD TWP.  
 HENRY COUNTY

FOUND R.R. Spk. 1" DEEP  
 5' WEST OF CTR. PAVE.  
 S.R. 65, FROM COUNTY  
 RECORDS.

PERSONNEL	TITLE	PERSONNEL	TITLE
BURNSIDE			
SMITH			
BOWERS			

COUNTY HENRY DATE 4-25-74

S. R. 65 WEATHER PT. CLOUDY

SEC. \_\_\_\_\_ TEMP. +60°

DESCRIPTION CONTROL POINTS JOB NO. \_\_\_\_\_

