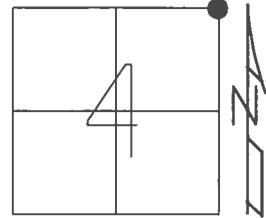


O.D.O.T. DISTRICT 2 SURVEY OFFICE (USE ONLY)

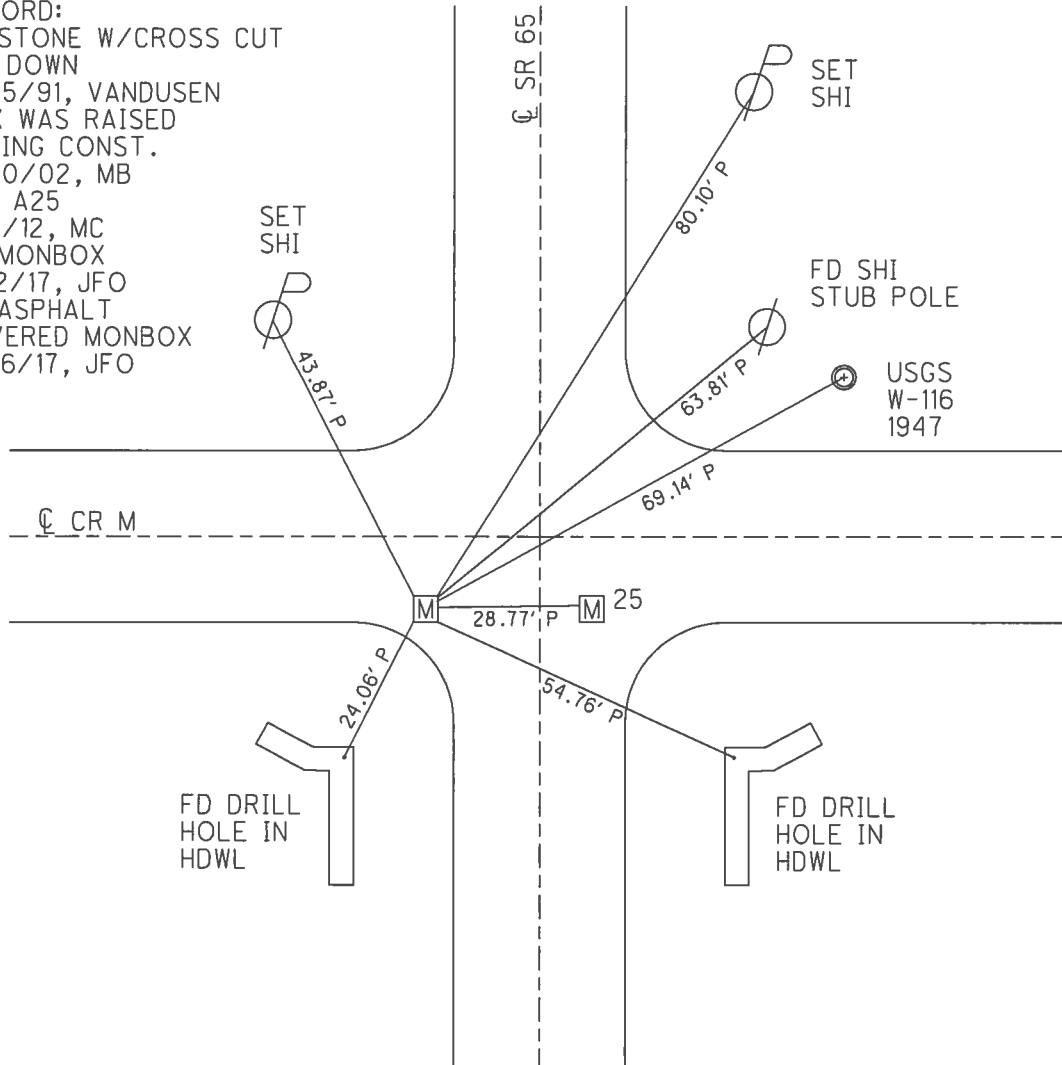
PERSONNEL _____ REFERENCE NO. 25 A SHEET 30 OF 42
 NOTES BARNHISEL DATE 10/7/02 ROUTE SR 65
 H.C. CANTERBURY WEATHER SUNNY COUNTY HENRY
 R.C. BARNHISEL TEMP. 59° TOWNSHIP RICHFIELD
 _____ SECTION 4
 _____ T 4 N R 8 E

TYPE MONUMENT MONBOX
 ON SURFACE - ~~BELOW~~ ON _____
 LEFT - ☉ PAV'T - ~~RIGHT~~ 21.9'
10.2' W TO LT EDGE PAVEMENT
 S.L.M. 636+41



GRID: NORTHING: 613728.643 EASTING: 1572693.613

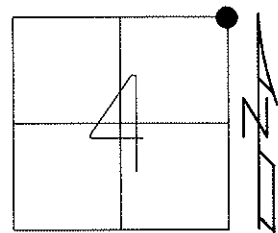
RECORD:
 FD STONE W/CROSS CUT
 24" DOWN
 11/25/91, VANDUSEN
 BOX WAS RAISED
 DURING CONST.
 11/20/02, MB
 REF A25
 7/11/12, MC
 FD MONBOX
 5/12/17, JFO
 FD ASPHALT
 COVERED MONBOX
 9/26/17, JFO



O.D.O.T. DISTRICT 2 SURVEY OFFICE (USE ONLY)

PERSONNEL	REFERENCE NO. <u>25 A</u>	SHEET <u>30</u> OF <u>42</u>
NOTES <u>BARNHESEL</u>	DATE <u>10/7/02</u>	ROUTE <u>SR 65</u>
H.C. <u>CANTERBURY</u>	WEATHER <u>SUNNY</u>	COUNTY <u>HENRY</u>
R.C. <u>BARNHESEL</u>	TEMP. <u>59°</u>	TOWNSHIP <u>RICHFIELD</u>
		SECTION <u>4</u>
		T <u>4</u> N R <u>8</u> E

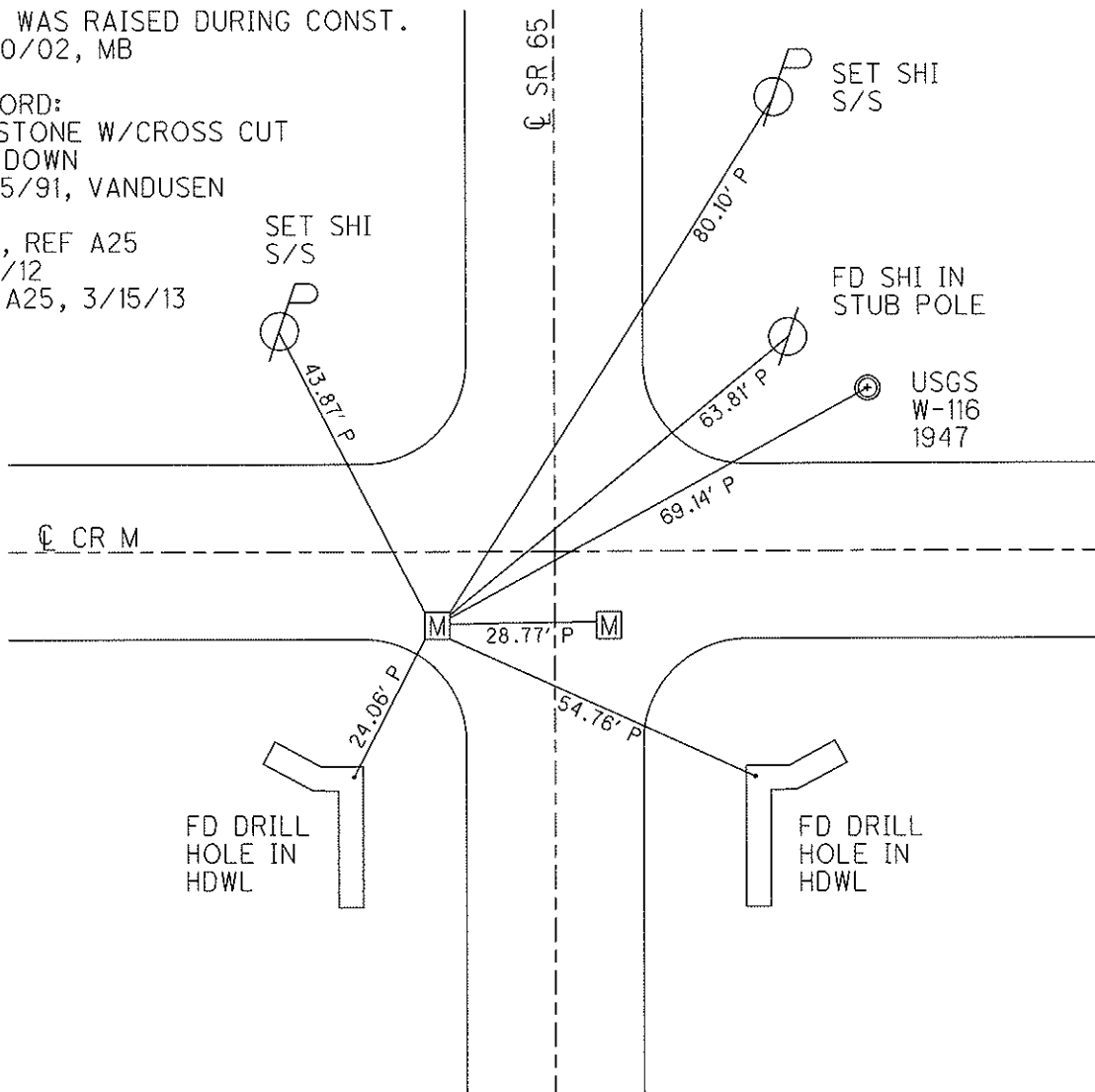
TYPE MONUMENT MONBOX
 ON SURFACE - ~~BELOW~~ ON
 LEFT - CL PAV'T - ~~RIGHT~~ 21.9'
- TO - EDGE PAVEMENT (10.2' W. OF W. EDGE)
 S.L.M. 636+41
 Grid: Northing: 613728.643 Easting: 1572693.613



BOX WAS RAISED DURING CONST.
 11/20/02, MB

RECORD:
 FD STONE W/CROSS CUT
 24" DOWN
 11/25/91, VANDUSEN

GPS, REF A25
 7/11/12
 FIN A25, 3/15/13
 MC



O.D.O.T. DISTRICT 2 SURVEY OFFICE

PERSONNEL _____

REFERENCE NO. 25

SHEET 27 OF 29

NOTES BARNHISEL RC

H.C. CANTERBURY

R.C. _____

DATE 10-07-02

WEATHER SUNNY

TEMP. +59°

ROUTE 65

COUNTY HENRY

TOWNSHIP RICHFIELD/DAMACUS

SECTION 4

T 4 N R 8 E

DAMACUS TWP

RICHFIELD TWP

4



TYPE MONUMENT I. PIN IN MON. BOXES

ON SURFACE - ~~BELOW~~ yes

LEFT - ℄ PAV'T. - RIGHT PT "A" 10.2' W. OF W. Edge

- TO - EDGE PAVEMENT PT "B" 5.0' W. OF E. Edge

S.L.M. 636+41 PT "A" 21.9' LT OF ℄

PT "B" 7.5' RT OF ℄

Boxes were RAISED DURING CONST.

11-20-02
MB

RECORD:

PT "A", Fd STONE
w/CROSS CUT 24" DOWN

PT "B" Fd STONE
18" DOWN, USED
HIGH POINT

VAN DUSEN
11-25-91

SET Shi
S/S

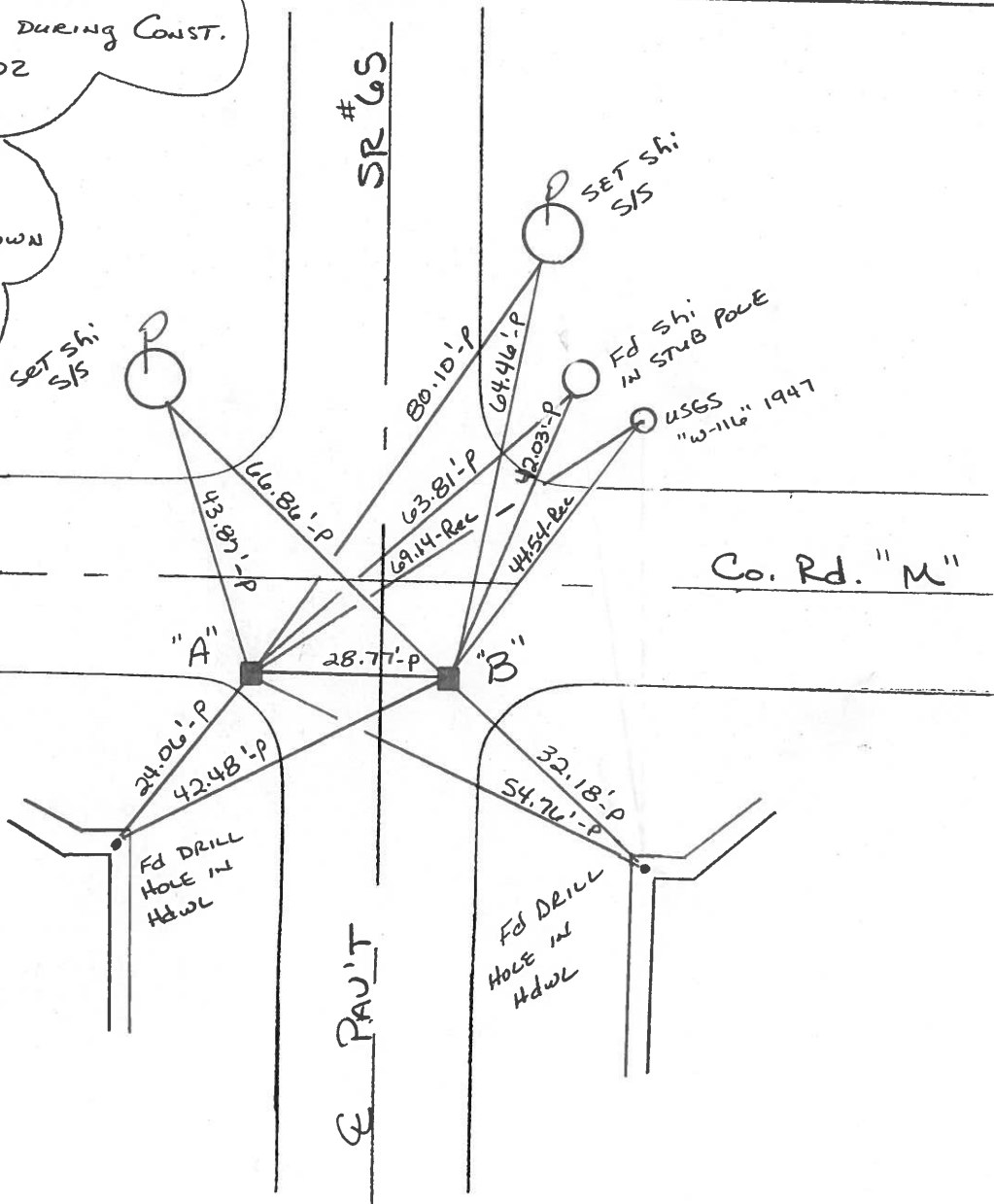
SET Shi
S/S

Fd Shi
IN STUB POLE

USGS
"W-116" 1947

℄ PAV'T

Co. Rd. "M"



O.D.O.T. DISTRICT 2 SURVEY OFFICE

PERSONNEL

REFERENCE NO. 25

SHEET OF

NOTES VAN DUJEN

H.C. VAN DUJEN

R.C. BARNHISEL

LONG

DATE 11-25-91

WEATHER CLEAR

TEMP. +28° F

ROUTE 65

COUNTY HENRY

TOWNSHIP RICHFIELD/DAMACUS

SECTION

T 5/4 R 8 E

LOOSE PT A" *I. PINS in Mon. Boxes* PT B"

TYPE MONUMENT STONE STONE

ON SURFACE - BELOW yes yes

LEFT- & PAV'T. - RIGHT 21.9'S. 7.5'S.

TO EDGE PAVEMENT PT A" 10.2' W. of W. edge

PT B" 50' W. of E. edge

S.L.M. ~~636+52~~

~~636+52~~

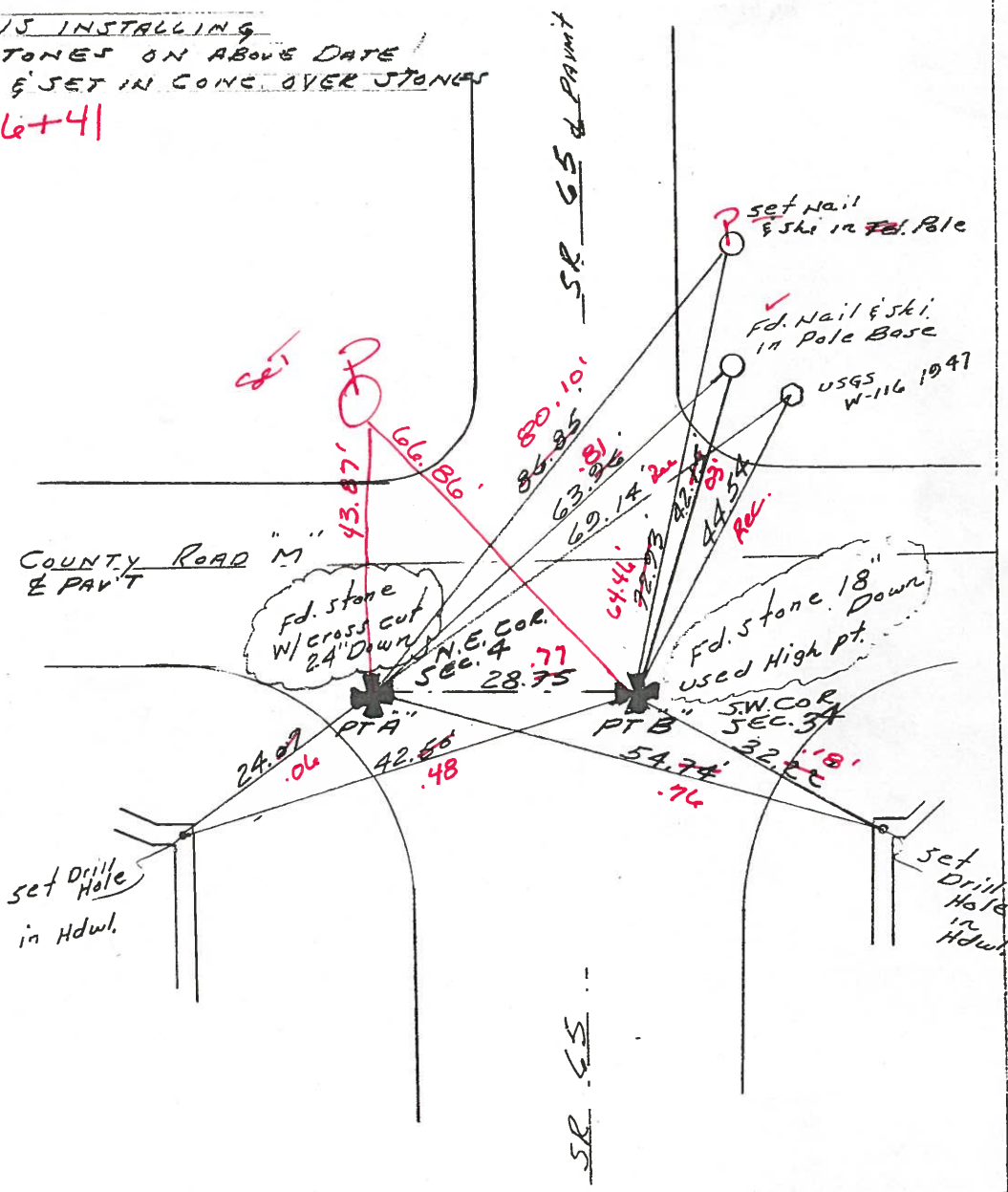
DAMACUS	33	34
RICHFIELD	4	3



NOTE: CONTRACTOR IS INSTALLING MON. BOXES OVER STONES ON ABOVE DATE! IRON PINS TO BE CUT & SET IN CONC OVER STONES

636+41

A" 0.35' Down
B" 0.37' Down



O.D.O.T. DISTRICT 2 SURVEY OFFICE

PERSONNEL _____ REFERENCE NO. 25 SHEET _____ OF _____

NOTES BARNHISEL

H.C. _____ DATE 4-11-90

R.C. HOFFMAN WEATHER cloudy

_____ TEMP. +40°

ROUTE 65

COUNTY HENRY

TOWNSHIP RICHFIELD/DAMACUS

SECTION _____

T 5/4 N R 8 E

TYPE MONUMENT P.K.'s & Washers

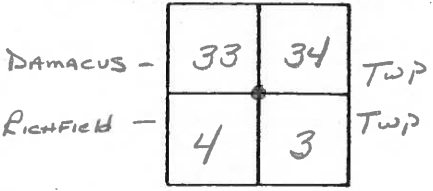
ON SURFACE - BELOW yes yes

LEFT- & PAV'T. - RIGHT 16.8 12.0

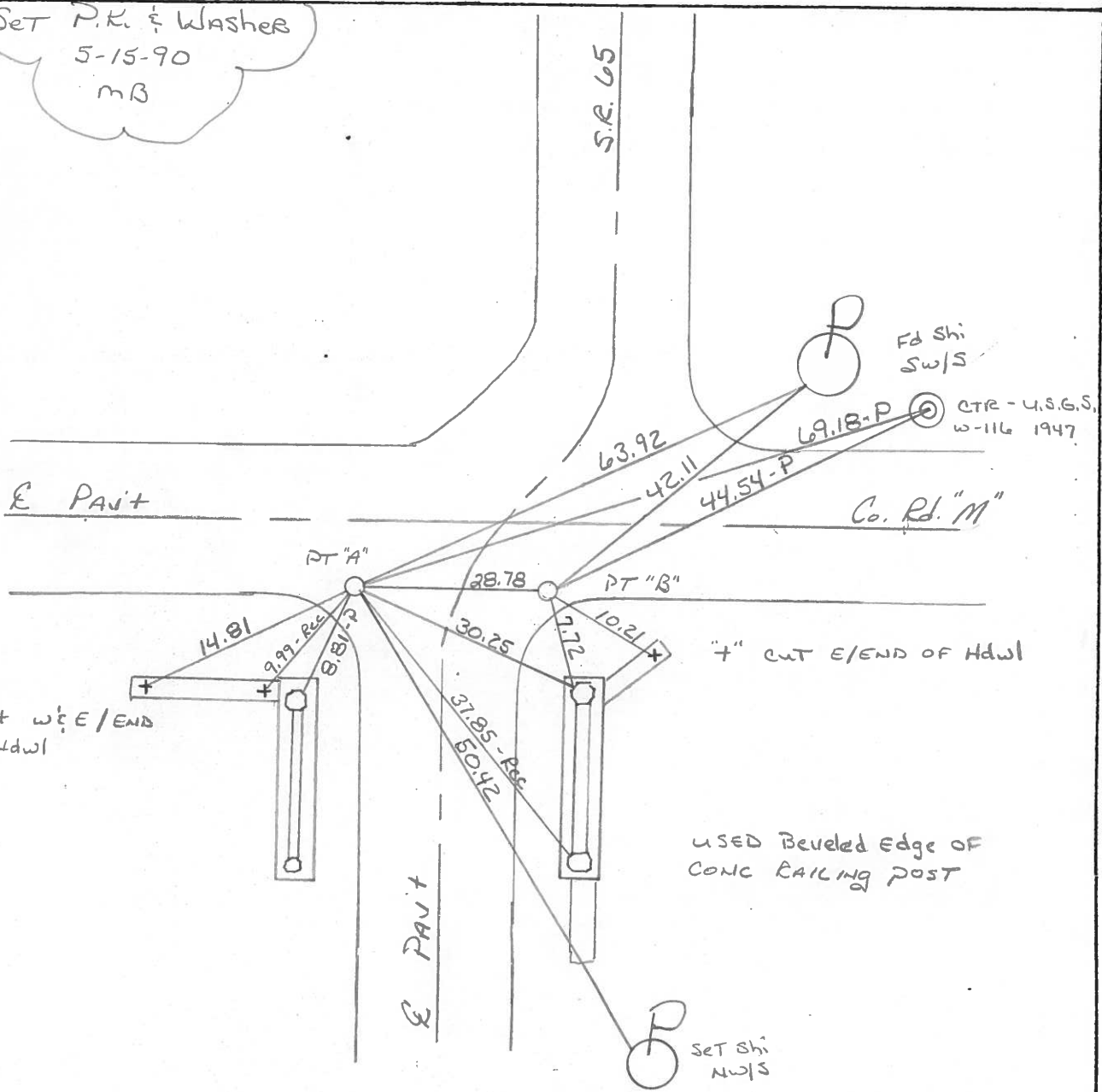
- TO - EDGE PAVEMENT

S.L.M. 636+52

PT "A" - 9.2 S. OF & WEST RICHFIELD -
PT "B" - 9.9.8. OF & EAST



Set P.K. & Washers
5-15-90
MB



USED Beveled Edge OF
CONC BAILING POST

County HENRY S.R. 65

Date 1-27-84

Township RICHFIELD / DAMASCUS

Weather cloudy

Section _____

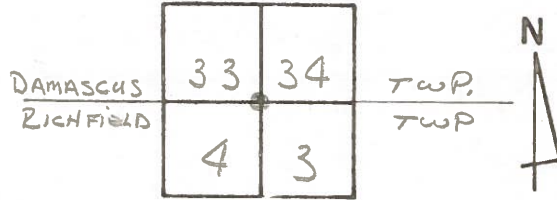
Temp. 30°

T4N, R8E

Personnel HOFFMAN

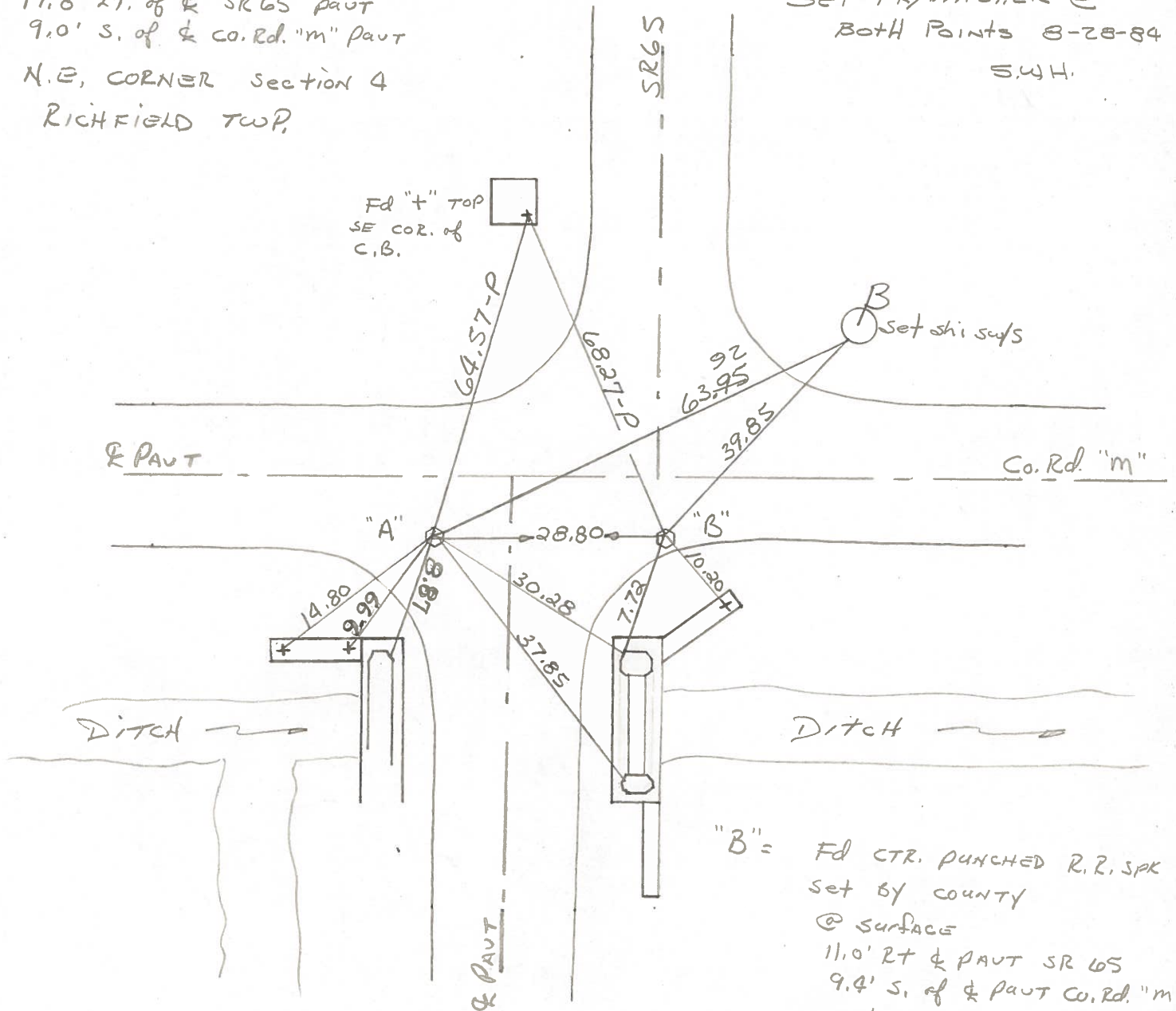
LOEHRKE H.C.
HOUSEHOLDER R.C.
BARNHISEL

25



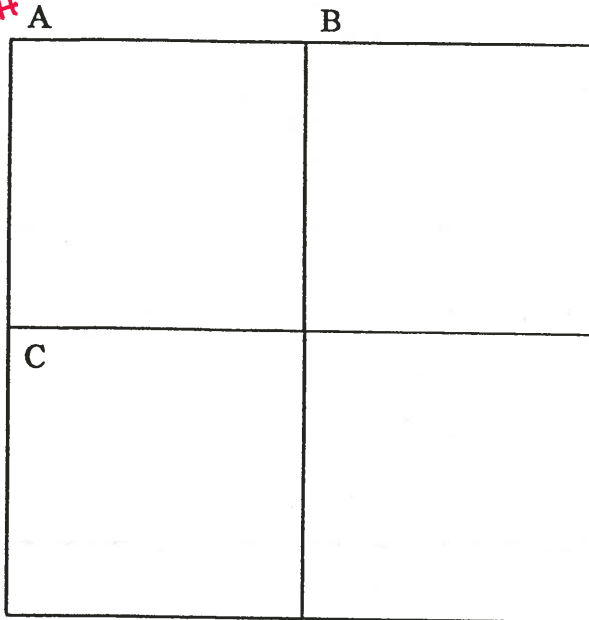
"A" = Fd CTR. PUNCHED R.R. SPK set by COUNTY
 @ SURFACE
 17.8' LT. of & SR 65 PAVT
 9.0' S. of & Co. Rd. "m" PAVT
 N.E. CORNER Section 4
 RICHFIELD TWP.

S 2 M = 636 + 50
 SET PK/WASHER @
 BOTH POINTS 8-28-84
 S.W.H.



"B" = Fd CTR. PUNCHED R.R. SPK
 set by COUNTY
 @ SURFACE
 11.0' RT & PAVT SR 65
 9.4' S. of & PAVT Co. Rd. "m"
 S.W. CORNER SECTION 34
 DAMASCUS TWP.

25-A



COUNTY: HENRY

TOWNSHIP: RICHFIELD

T- 4 -N R- 8 - E

SECTION: 3

25-A

8/1/79 R.W., J.J., G.M.

A - Found recorded RR spike in iron pipe over iron pin on n/s of top stone. Top stone was 0.25' north and 0.42' west of top center of true stone (6"x6"x20") 22" below road surface. Removed RR spike, iron pipe, iron pin, and top stone. Placed center punched RR spike on surface over top center of stone. Pk's 6' north and east. Stone is 8.2' west of west edge pavement.

64.52' N. to "+" SE corner catch basin. (P)

69.15' E.N.E. to center USGS bench mark "W-116 1947". (P)

38.74' S.E. to SW corner bridge rail.

9.94' S.S.W. to "+" in conc. wingwall. (P)

14.78' S.W. to "+" in west end conc. wingwall.

28.79' E. to SW Corner, Sec. 34: Damascus Twp.

7/13/88 R.W., S.K., K.A.

Found nail/shiner and Pk's north and east.

64.52' N. to "+" SE corner catch basin. (P)

69.14' E.N.E. to center USGS bench mark "W-116 1947".(P)

37.98' E.S.E. to "+" north end NE wingwall. (P)

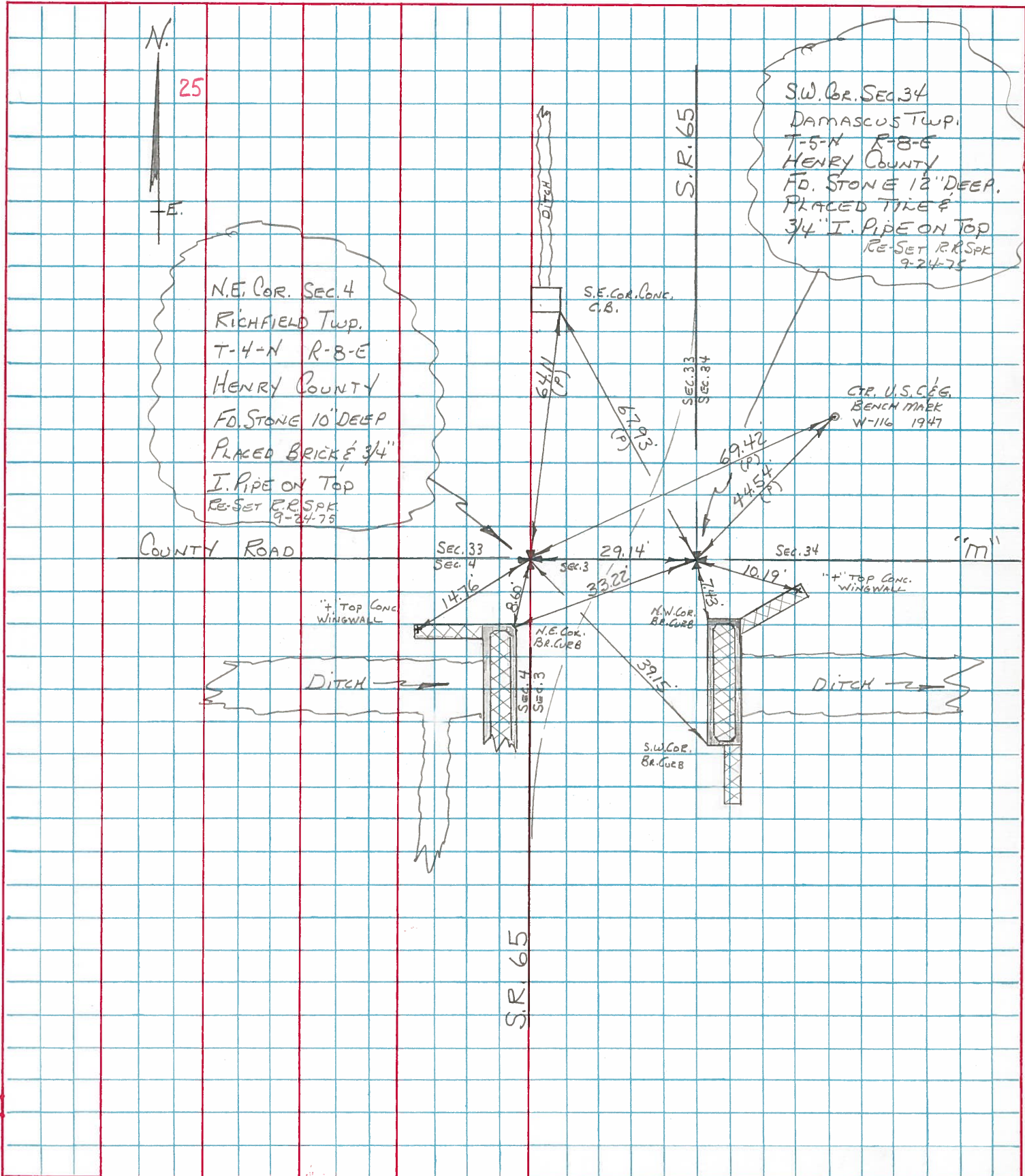
9.93' S.S.W. to "+" in top of conc. wingwall. (P)

14.80' S.W. to "+" west end conc. wingwall. (P)

PERSONNEL	TITLE	PERSONNEL	TITLE
BURNSIDE			
SMITH			
BOWERS			
MEAD			

COUNTY HENRY DATE 5-13-75
 S. R. 65 WEATHER CLEAR
 SEC. TOWNSHIP LINE TEMP. +63°

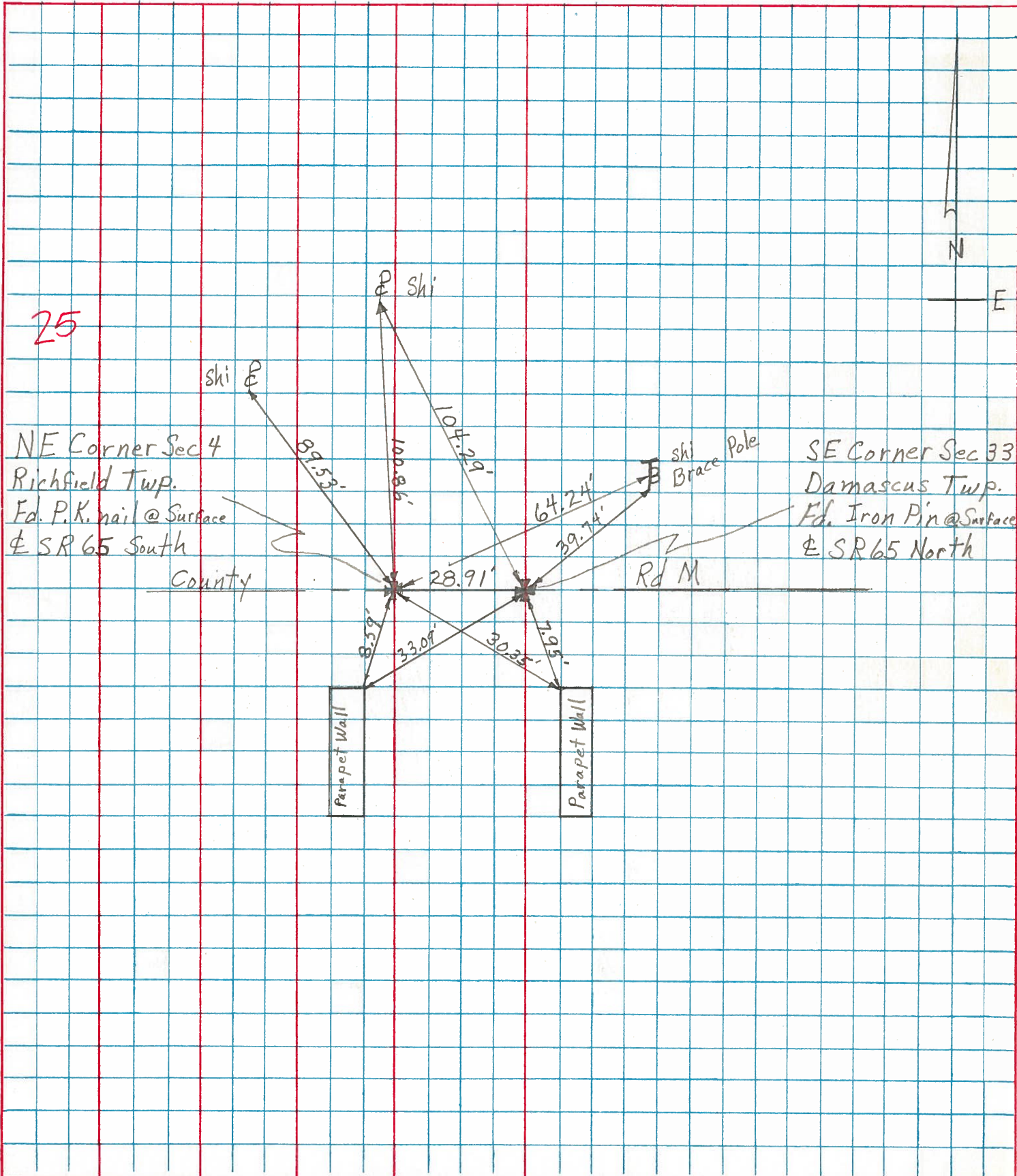
DESCRIPTION REF. TO SEC. CORNERS (RICHFIELD & DAMASCUS TWP) JOB NO. _____
 LEFT CENTER LINE RIGHT



PERSONNEL	TITLE	PERSONNEL	TITLE
Smith			
Bowers			
Mead			

COUNTY Henry DATE 4-16-1974
 S. R. 65 WEATHER Clear-Mild
 SEC. Damascus & Richfield Twp. TEMP. 52°

DESCRIPTION ± Control Ties JOB NO. _____



25
 NE Corner Sec 4
 Richfield Twp.
 Ed. P.K. nail @ Surface
 ± SR 65 South

SE Corner Sec 33
 Damascus Twp.
 Ed. Iron Pin @ Surface
 ± SR 65 North