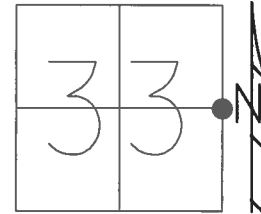


O.D.O.T. DISTRICT 2 SURVEY OFFICE (USE ONLY)

PERSONNEL _____ REFERENCE NO. 26 SHEET 31 OF 42

NOTES RHOADES DATE 5/9/17 ROUTE SR 65
 H.C. O'DONNELL WEATHER SUNNY COUNTY HENRY
 R.C. RHOADES TEMP. 47° TOWNSHIP DAMASCUS
 _____ SECTION 33
 _____ T 5 N R 8 E

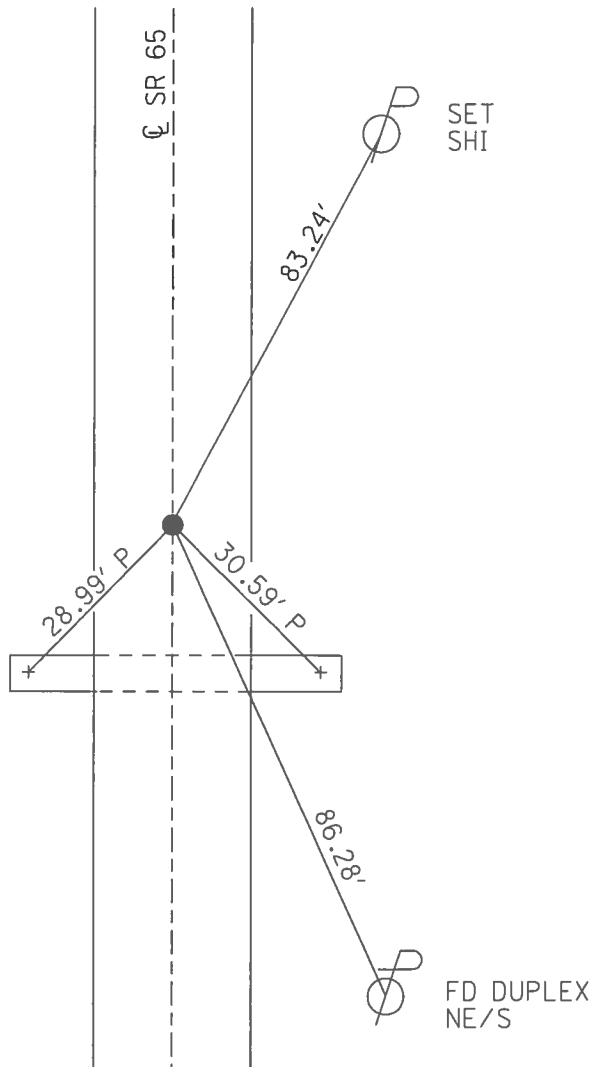
TYPE MONUMENT MAG/WASHER
 ON SURFACE - ~~BELOW~~ ON
 LEFT - ☉ PAV'T - RIGHT ON
10.3' TO RT EDGE PAVEMENT
 S.L.M. 663+04



GRID: NORTHING: 616391.300 EASTING: 1572774.504

RECORD:
 FD MAG/WASHER
 10/7/02, DCH
 FD MAG/WASHER
 7/11/12, MC
 POINT CHIPPED OUT
 3/15/13, MC
 FD MAG/WASHER
 REF26
 5/12/17, JFO
 SET MAG/WASHER
 9/26/17, JFO

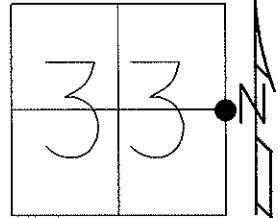
FD "+" CUT ON BOTH
 ENDS OF 84" CONC. PIPE



O.D.O.T. DISTRICT 2 SURVEY OFFICE (USE ONLY)

PERSONNEL	REFERENCE NO. <u>26</u>	SHEET <u>31</u> OF <u>42</u>
NOTES <u>BARNHISEL</u>	DATE <u>10/7/02</u>	ROUTE <u>SR 65</u>
H.C. <u>CANTERBURY</u>	WEATHER <u>SUNNY</u>	COUNTY <u>HENRY</u>
R.C. <u>BARNHISEL</u>	TEMP. <u>59°</u>	TOWNSHIP <u>DAMASCUS</u>
		SECTION <u>33</u>
		T <u>5</u> N R <u>8</u> E

TYPE MONUMENT MAG / WASHER
 ON SURFACE - ~~BELOW~~ ON
 LEFT - Q PAV'T - RIGHT ON
10.3' TO RT EDGE PAVEMENT
 S.L.M. 663+04

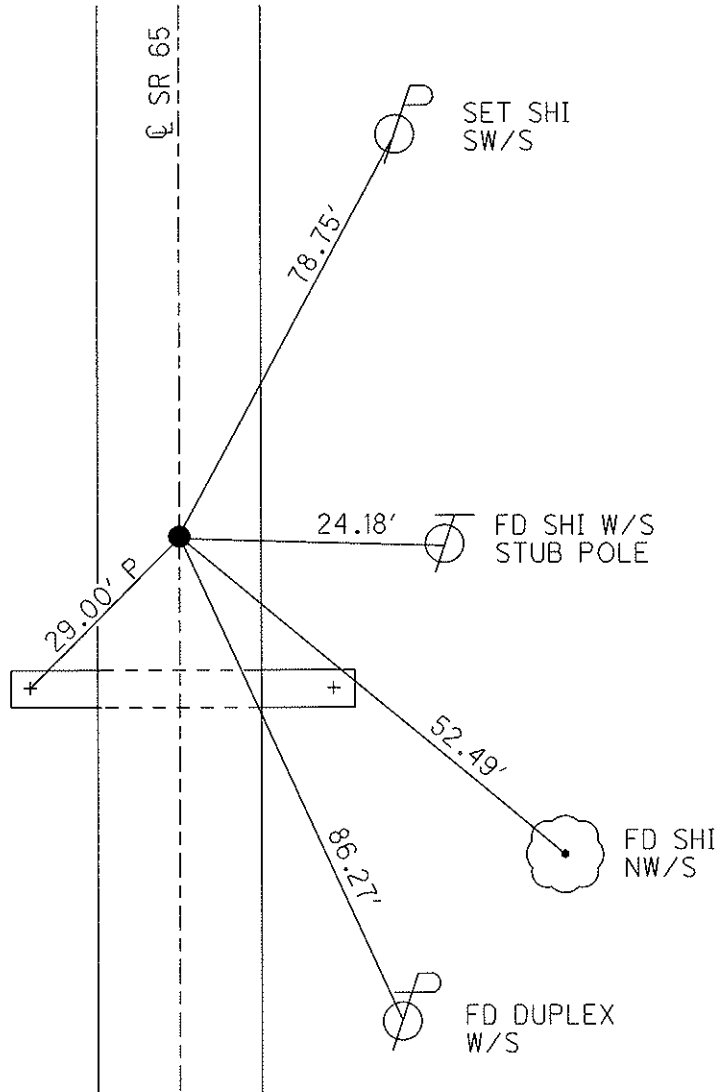


Grid: Northing: 616391.335 Easting: 1572774.450

GPS, REF 26
7/11/12, MC

POINT CHIPPED OUT
GPS, FIN 26
3/15/13, MC

FD "+" CUT ON BOTH
ENDS OF 84" CONC. PIPE



O.D.O.T. DISTRICT 2 SURVEY OFFICE

PERSONNEL

REFERENCE NO. 26

SHEET 28 OF 29

NOTES BARNHISEL RC

H.C. CANTERBURY

DATE 10-07-02

ROUTE 65

R.C. _____

WEATHER Sunny

COUNTY HENRY

TEMP. +59°

TOWNSHIP DAMACUS

SECTION 33

T 5 N R 8 E

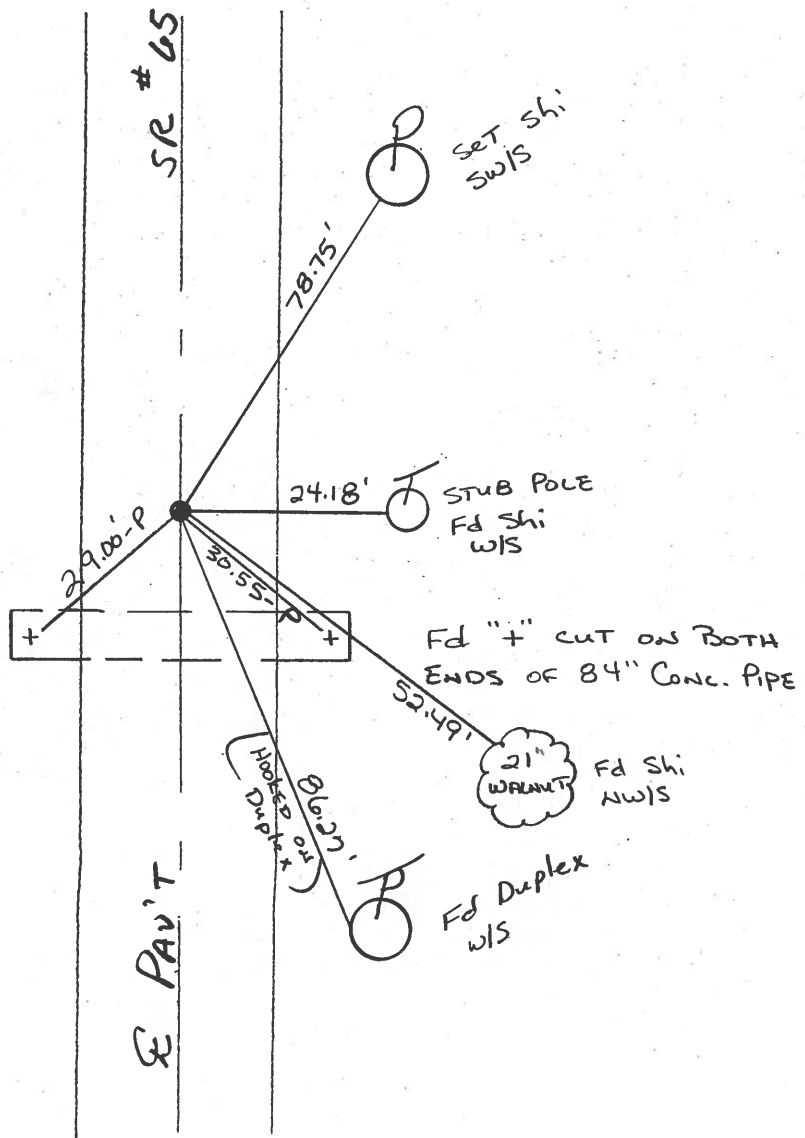
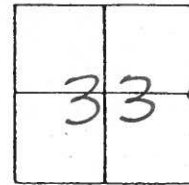
TYPE MONUMENT PK & WASHER

ON SURFACE - ~~BELOW~~ yes

~~LEFT - & PAV'T.~~ - ~~RIGHT~~ yes

10.3' TO RT. EDGE PAVEMENT

S.L.M. 663+04



O.D.O.T. DISTRICT 2 SURVEY OFFICE

PERSONNEL _____ REFERENCE NO. 26 SHEET _____ OF _____

NOTES BARNHISEL ✓

H.C. " " MC

R.C. Hoffman MB

DATE 10-07-02
~~4-11-90~~

WEATHER cloudy Sunny

TEMP. +40° +59

ROUTE 65

COUNTY HENEY

TOWNSHIP DAMACUS

SECTION 33

T S N R B E

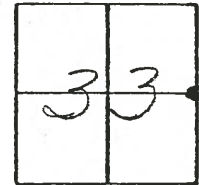
TYPE MONUMENT P.K. & Washer ✓

ON SURFACE - ~~BELOW~~ yes ✓

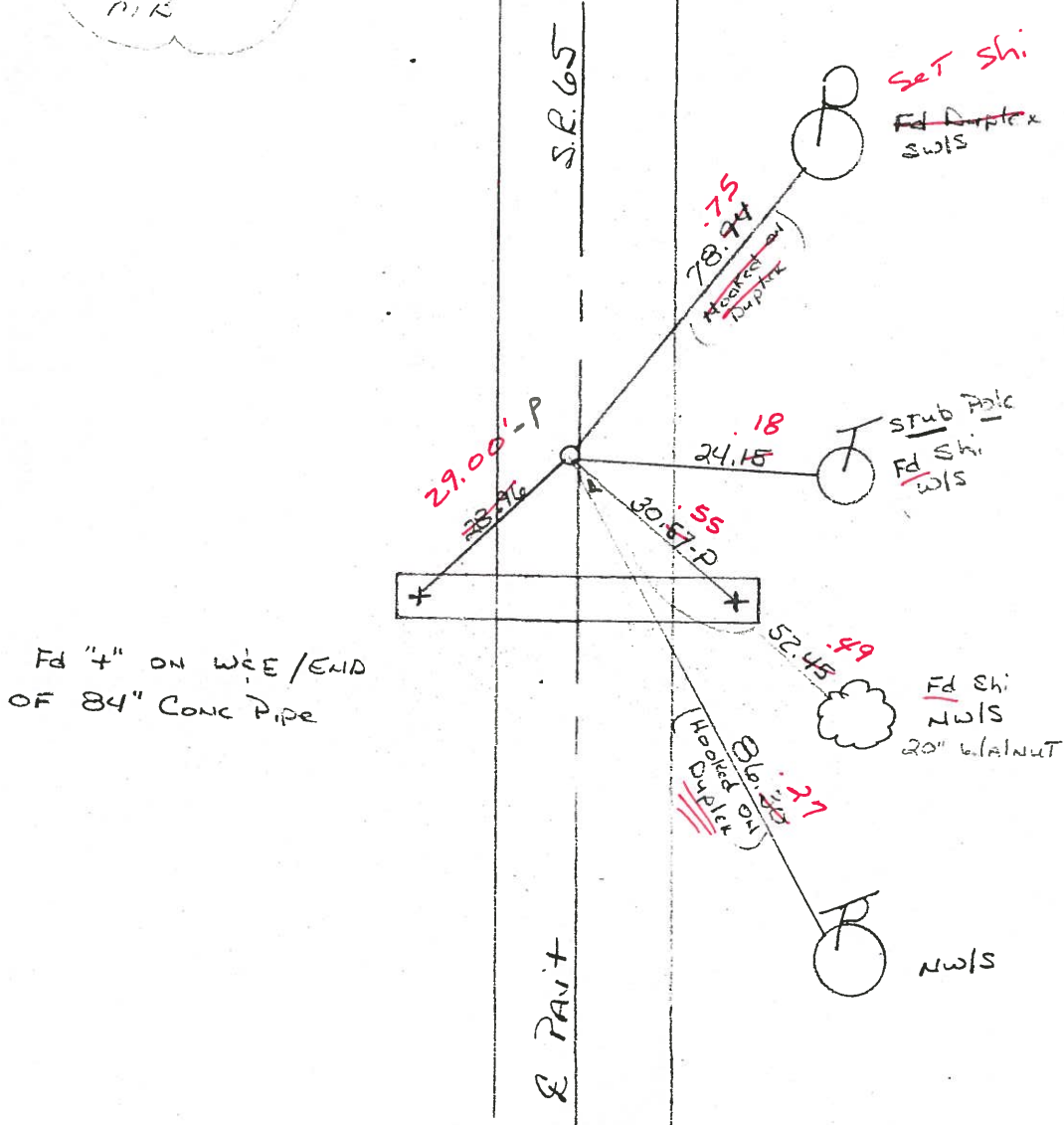
LEFT-~~C~~ PAV'T. - RIGHT 0.7 E

10.3' 9.9 TO PT ~~LT~~ EDGE PAVEMENT

S.L.M. ~~663+75~~ ~~656+75~~ 663+04



SET P.K. & Washer
 5-15-90
 P.K.



Fd "4" ON W/E/END OF 84" CONC PIPE

Q.D.O.T. DISTRICT 2 SURVEY OFFICE

SHEET _____ OF _____

County HENRY S.R. 65

Date 2-1-84

Township DAMASCUS

Weather Cloudy

Section 33

Temp. +18°

TSN, RBE

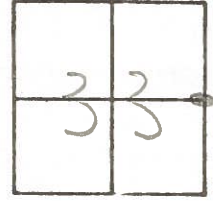
Personnel HOFFMAN

LOEHRKE H.C.

HOUSEHOLDER R.C.

BARNHISEL

26

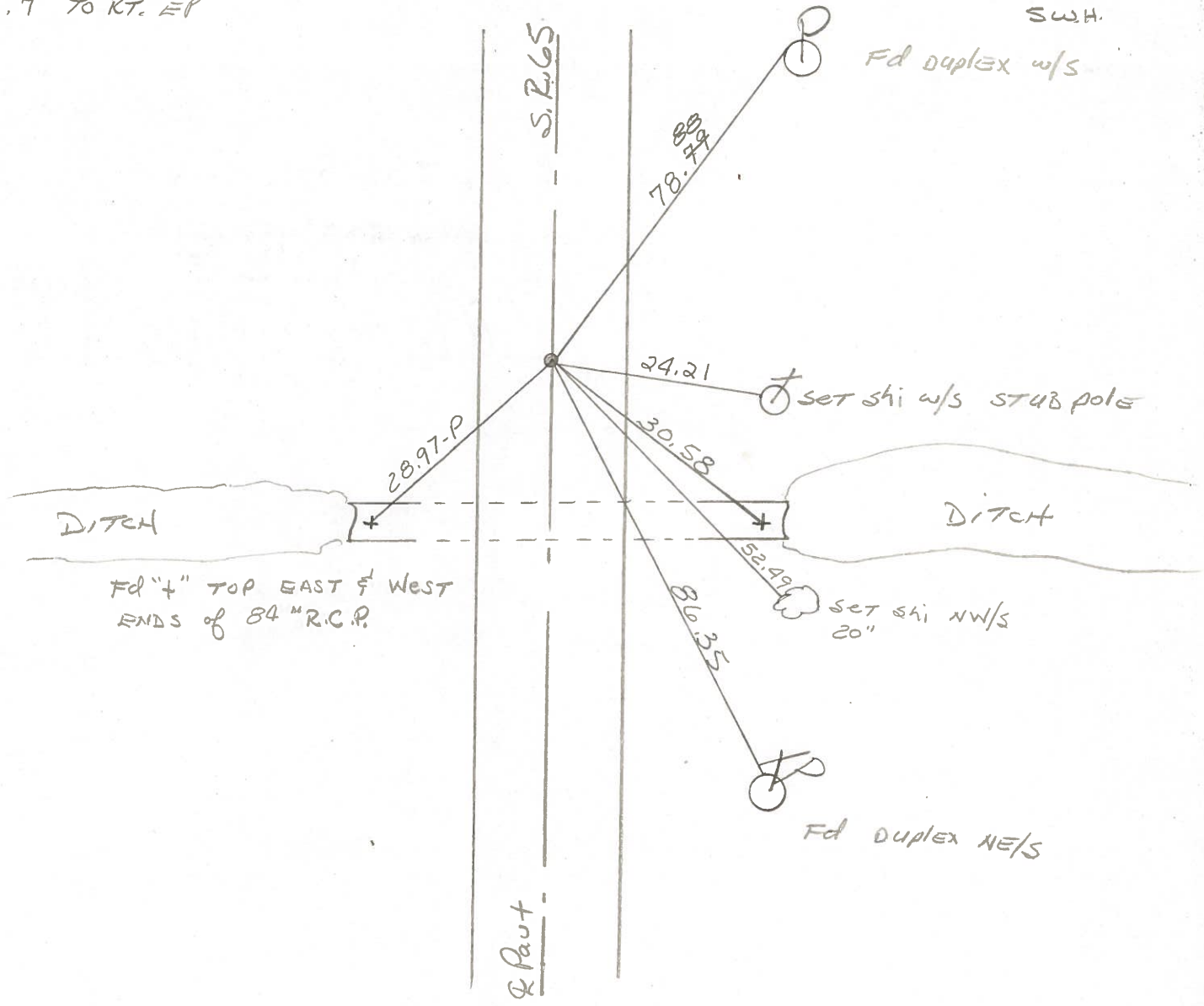


Fd. P.K. Nail on surface

S.L.M. 663 + 11

on & part
8.9' to Lt. EP.
8.7' to Rt. EP

SET PK/WASHER
8-28-84
SWH.



Q.D.O.T. DISTRICT 2 SURVEY OFFICE

SHEET _____ OF _____

County HENRY S.R. 65

Date 2-1-84

Township DAMASCUS

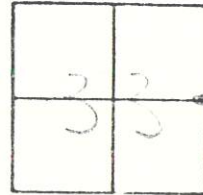
Weather Cloudy

Section 33

Temp. +18°

TSN, RBE

Personnel HOFFMAN



LOEHRKE H.C.

HOUSEHOLDER R.C.

BARNHISEL

26

Fd. P.K. Nail ON SURFACE

ON & PAUT
8.9' TO LT. EP.
8.7' TO RT. EP

S.L.M 663+11

SET PK/WASHER
8-28-84
SWH.

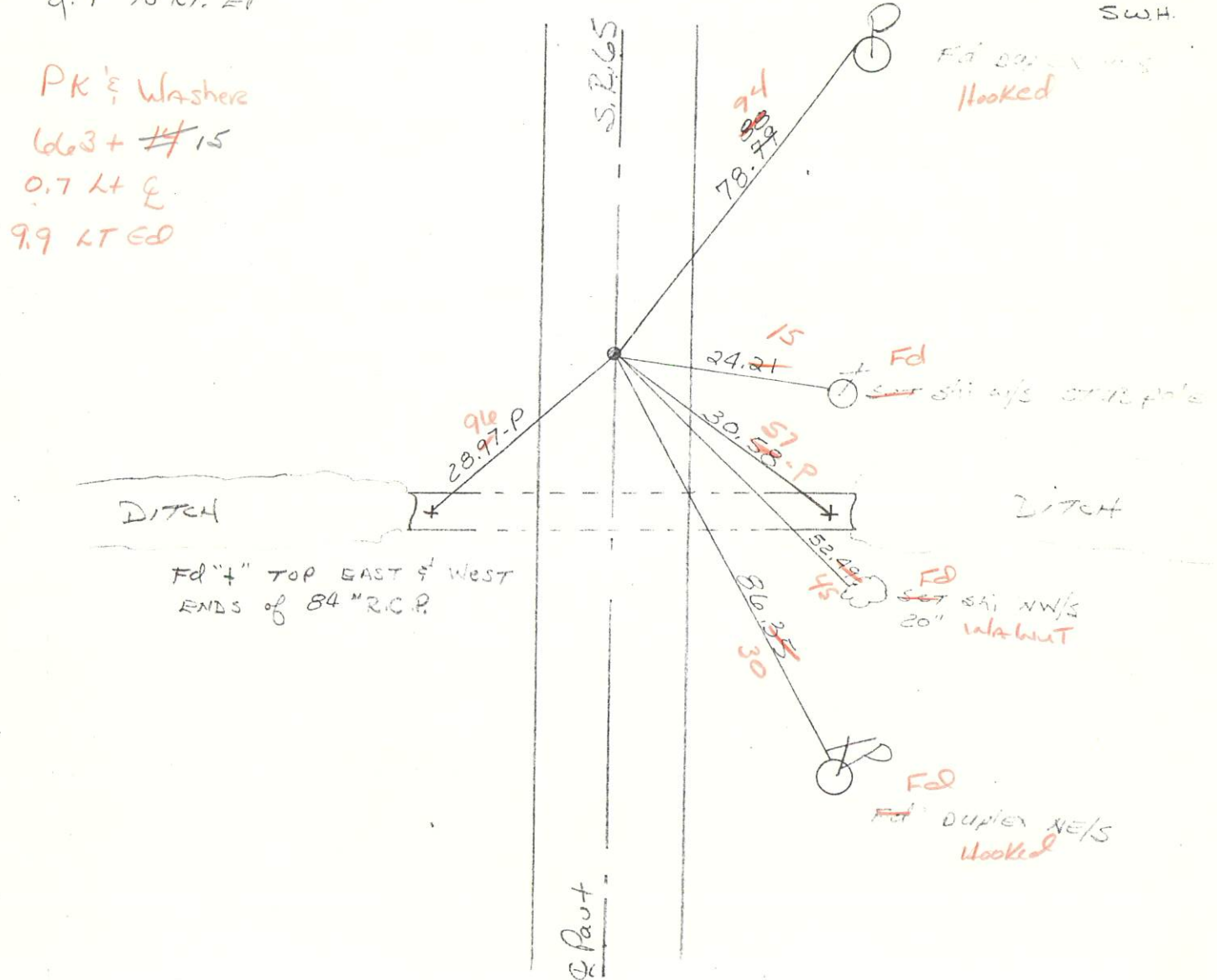
PK & Washers

663+ #15

0.7 LT &

9.9 LT ED

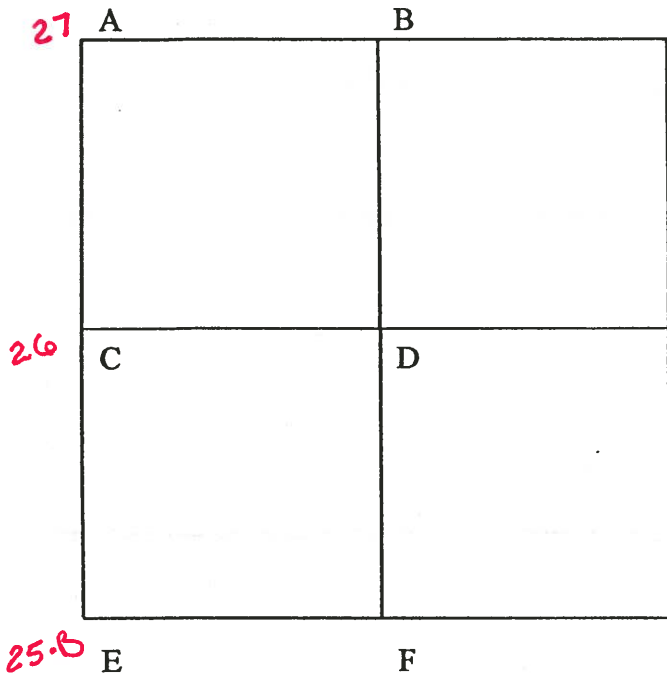
Fd 24' on NW/4
Hooked



Fd "4" TOP EAST & WEST
ENDS of 84" R.C.P.

Fd
Set 84" NW/4
20" WASHUT

Fd
Fd DUPLICATION
Hooked



COUNTY: HENRY

TOWNSHIP: DAMASCUS

T- 5 -N R- 8 -E

SECTION: 34

7/8/80 R.W., C.S.

- C - Found P.K. nail established by R. Burnside, O.D.O.T. after digging for stone.
 78.85' N.N.E. to duplex W/S power pole
 30.55' S.E. to "+" east end of 84" R.C.P. (P)
 86.30' S.S.E. to duplex NE/S power pole
 28.93' S.W. to "+" west end of 84" R.C.P. (P)

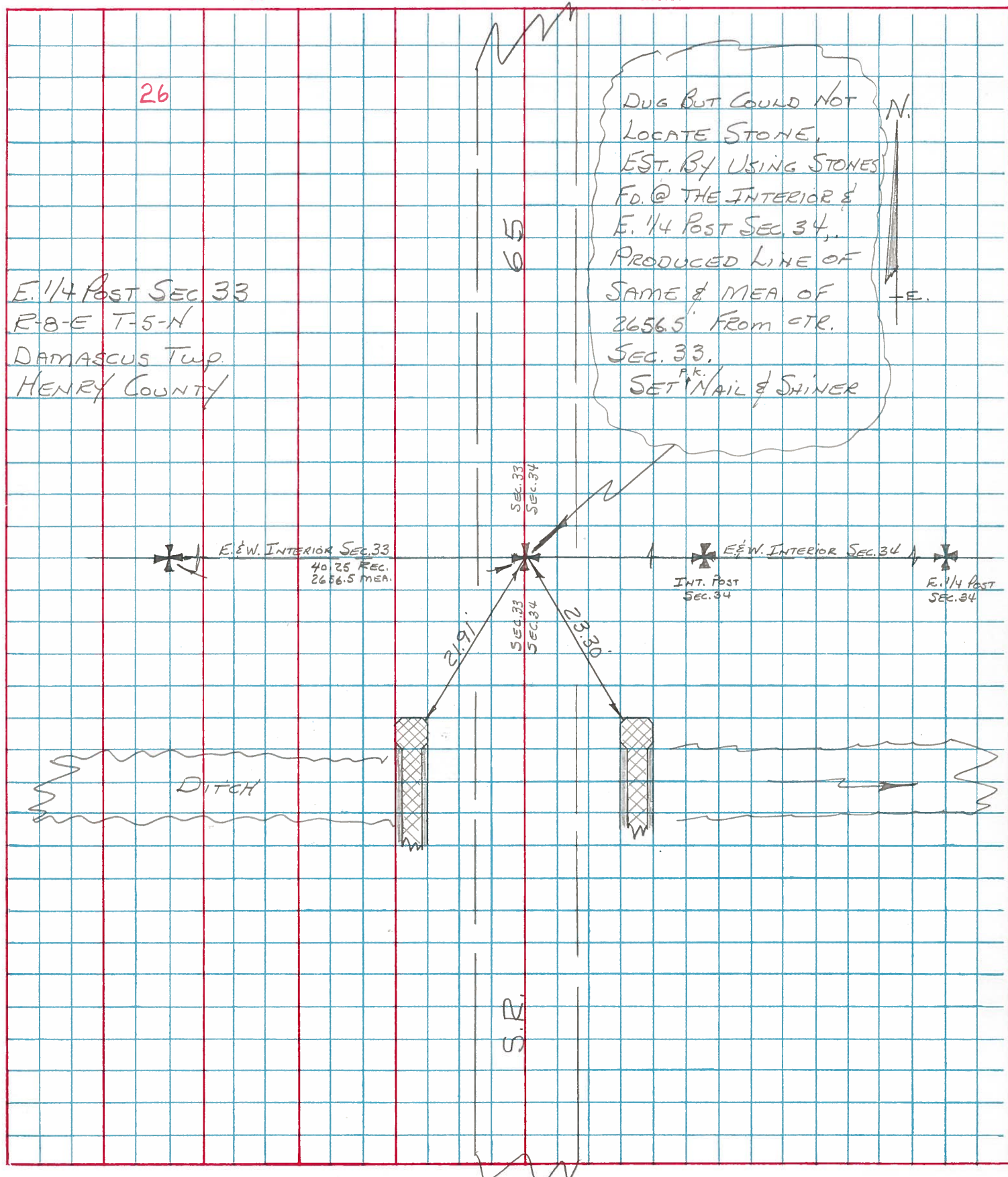
7/2/80 R.W., J.J., C.S.

- D - Found iron pin over small stone over true stone (7" x 10" x 10) 15" below road surface.
 Removed iron pin and small stone. Placed 5/8" iron pin with top of pin over top center of stone.
 P.K.'s 6' N.E. & S.E. Stone is 1.3' west of west edge 10' pavement.
 26.53' W. to near face 3" iron post
 146.80' N.N.W. to duplex E/S power pole
 20.61' E. to spike W/S wool fence post
 116.74' S.S.E. to duplex SW/S telephone pole

PERSONNEL	TITLE	PERSONNEL	TITLE
BURNSIDE			
SMITH			
BOWERS			
MEAD			

COUNTY HENRY DATE 7-15-75
 S. R. 65 WEATHER CLEAR
 SEC. E 1/4 Post Sec. 33 TEMP. +83°

DESCRIPTION REF. TO SECTION CORNER (SET) JOB NO. _____



PERSONNEL	TITLE	PERSONNEL	TITLE
BURNSIDE			
SMITH			
BOWERS			
MEAD			

COUNTY HENRY DATE 10-22-74
 S. R. Co. Rd. 3-A WEATHER CLEAR
 SEC. 34 DAMASCUS TWP. INTERIOR COR. TEMP. +52°

DESCRIPTION LOCATE SECTION CORNER JOB NO. _____
 LEFT CENTER LINE RIGHT

