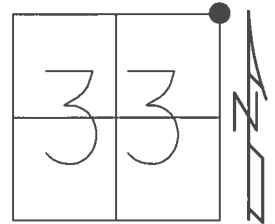


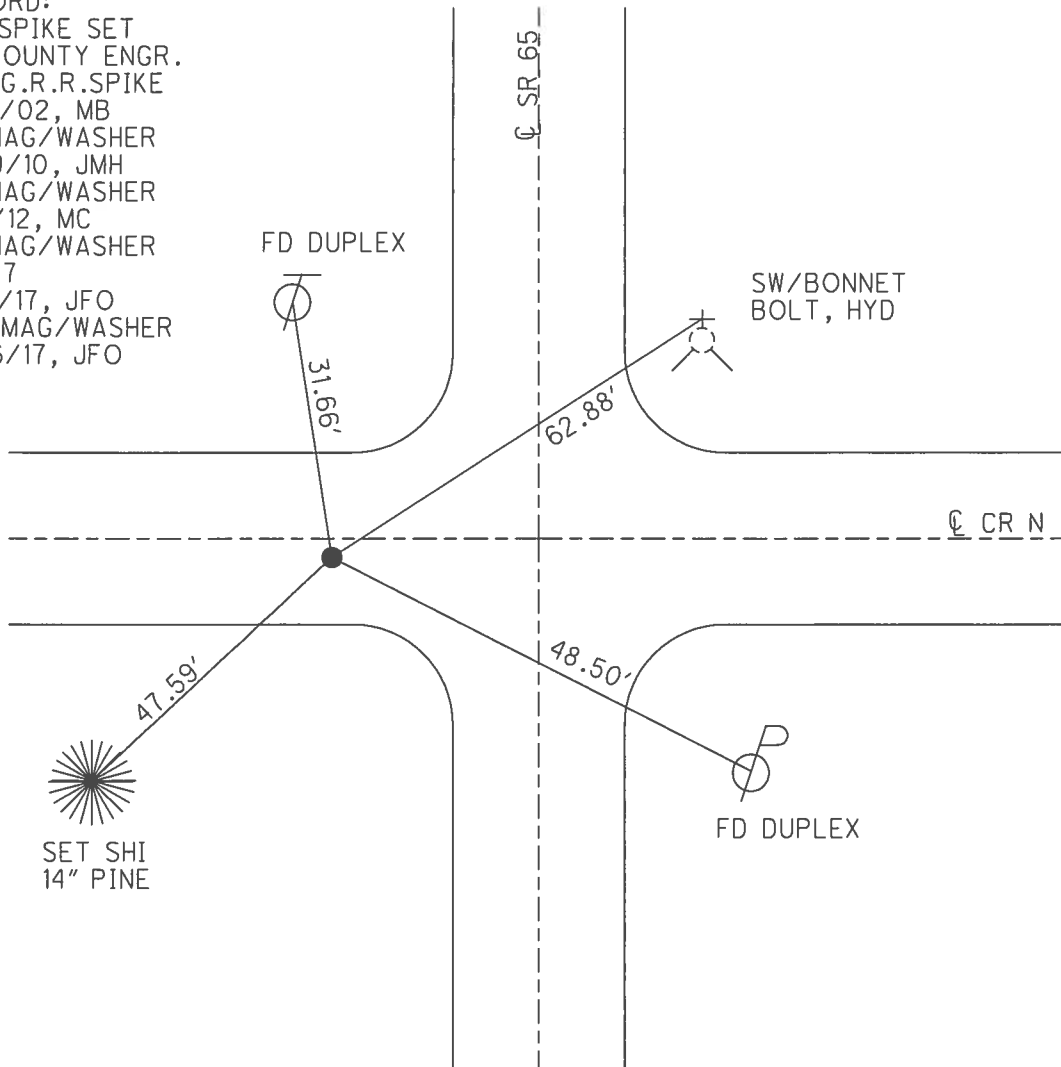
O.D.O.T. DISTRICT 2 SURVEY OFFICE (USE ONLY)

PERSONNEL \_\_\_\_\_ REFERENCE NO. 27 SHEET 32 OF 42  
 NOTES RHOADES DATE 5/9/17 ROUTE SR 65  
 H.C. O'DONNELL WEATHER SUNNY COUNTY HENRY  
 R.C. RHOADES TEMP. 47° TOWNSHIP DAMASCUS  
 SECTION 33  
 T 5 N R 8 E

TYPE MONUMENT \_\_\_\_\_ MAG/WASHER \_\_\_\_\_  
 ON SURFACE - ~~BELOW~~ \_\_\_\_\_ ON \_\_\_\_\_  
 LEFT - ☉ PAV'T - ~~RIGHT~~ 19.1', 9.8' N. OF S. EP CR N  
9.2' LT OF LT EDGE PAVEMENT  
 S.L.M. 689+56.8  
 GRID: NORTHING: 619039.800 EASTING: 1572804.487



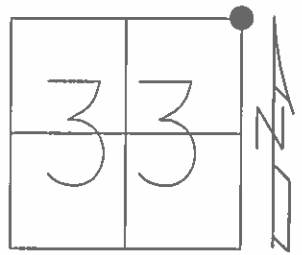
RECORD:  
 R.R.SPIKE SET  
 BY COUNTY ENGR.  
 FD LG.R.R.SPIKE  
 10/7/02, MB  
 FD MAG/WASHER  
 9/29/10, JMH  
 FD MAG/WASHER  
 5/6/12, MC  
 FD MAG/WASHER  
 REF27  
 5/12/17, JFO  
 SET MAG/WASHER  
 9/26/17, JFO



O.D.O.T. DISTRICT 2 SURVEY OFFICE (USE ONLY)

PERSONNEL	REFERENCE NO. <u>27</u>	SHEET <u>32</u> OF <u>42</u>
NOTES <u>HUSS</u>	DATE <u>05-06-12</u>	ROUTE <u>SR 65</u>
H.C. <u>HUSS</u>	WEATHER <u>SUNNY</u>	COUNTY <u>HENRY</u>
R.C. <u>CANTERBURY</u>	TEMP. <u>+67° F</u>	TOWNSHIP <u>DAMASCUS</u>
		SECTION <u>33</u>
		T <u>5</u> N R <u>8</u> E

TYPE MONUMENT \_\_\_\_\_ MAG/W \_\_\_\_\_  
 ON SURFACE - ~~BELOW~~ \_\_\_\_\_ YES \_\_\_\_\_  
 LEFT - Q PAV'T - ~~RIGHT~~ 19.1', 9.8' N OF S. EP CR N  
9.2' LT OF LT EDGE PAVEMENT  
 S.L.M. 13.06 STA: 689+56.8  
 Grid: Northing: 619039.896 Easting: 1572804.407



RECORD

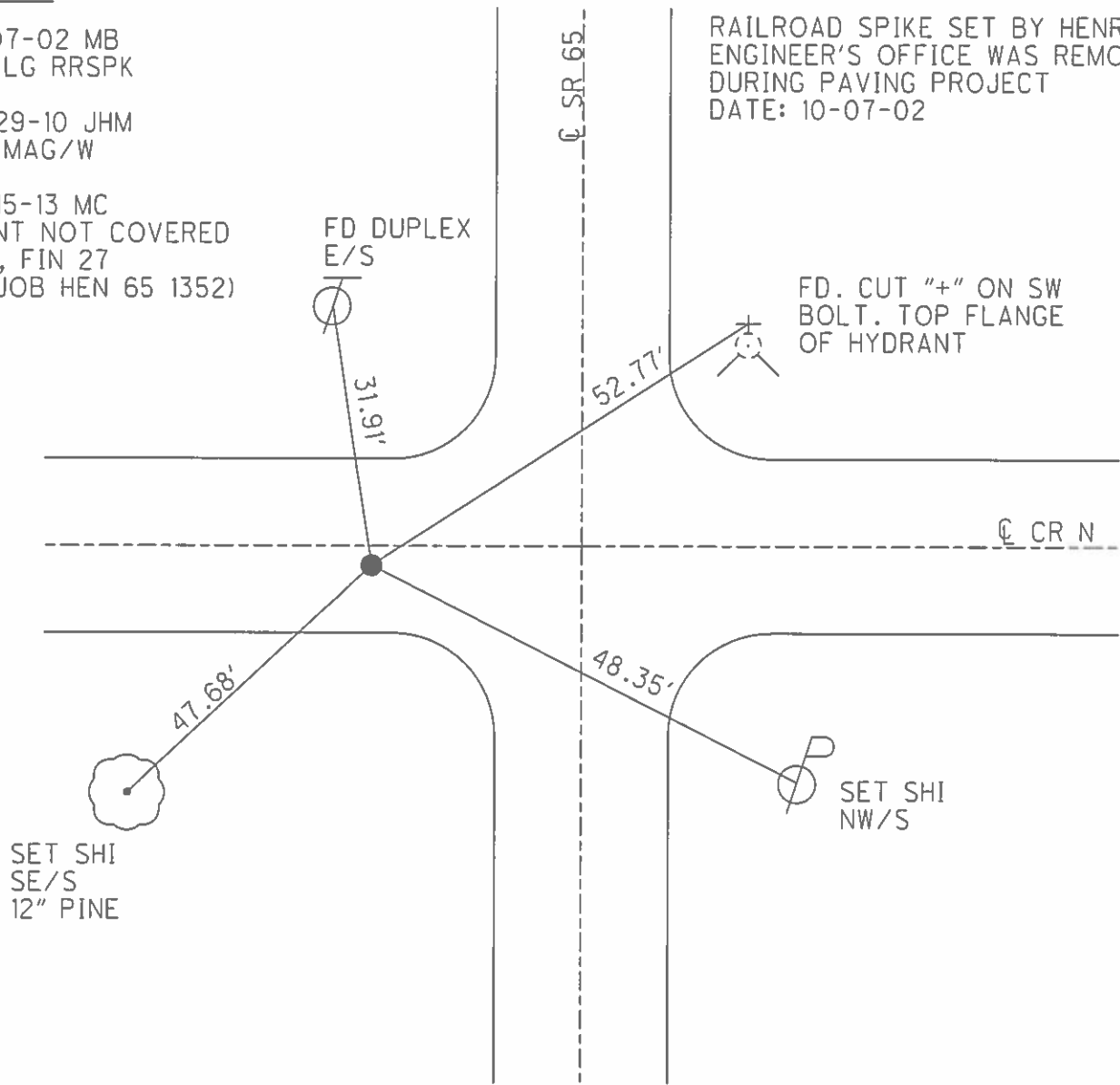
10-07-02 MB  
FD. LG RRSPK

09-29-10 JHM  
FD. MAG/W

03-15-13 MC  
POINT NOT COVERED  
GPS, FIN 27  
(IN JOB HEN 65 1352)

RAILROAD SPIKE SET BY HENRY CO  
ENGINEER'S OFFICE WAS REMOVED  
DURING PAVING PROJECT  
DATE: 10-07-02

FD. CUT "+" ON SW  
BOLT. TOP FLANGE  
OF HYDRANT



SET SHI  
SE/S  
12" PINE

SET SHI  
NW/S

O.D.O.T. DISTRICT 2 SURVEY OFFICE

PERSONNEL

REFERENCE NO. 27

SHEET 29 OF 29

NOTES BARNHISEL RC

H.C. CANTERBURY

DATE 10-07-02

ROUTE 65

R.C. \_\_\_\_\_

WEATHER SUNNY

COUNTY HENRY

TEMP. +59°

TOWNSHIP DAMACUS

SECTION 33

T. 5 N R. 8 N

TYPE MONUMENT Log RR Spk

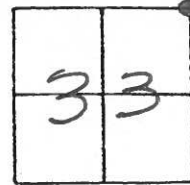
ON SURFACE - BELOW 2.5"

LEFT - LT 0 PAV'T. - RIGHT 19.4'

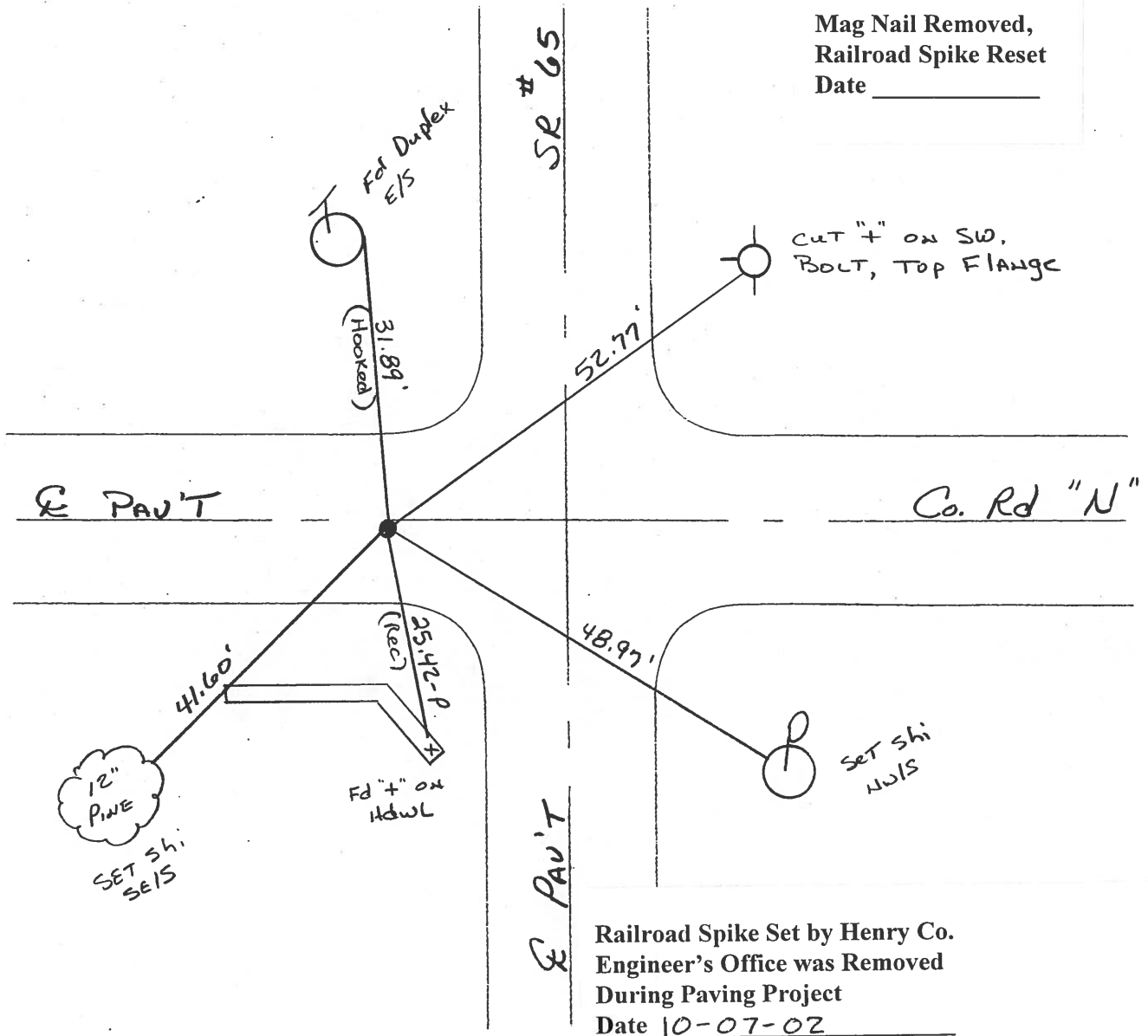
9.2' TO OF LT EDGE PAVEMENT 9.8' N. OF SOUTH E. PAV'T

S.L.M. 689+55

C. Rd "N"



Mag Nail Removed,  
Railroad Spike Reset  
Date \_\_\_\_\_



Railroad Spike Set by Henry Co.  
Engineer's Office was Removed  
During Paving Project  
Date 10-07-02

# O.D.O.T. DISTRICT 2 SURVEY OFFICE

3319

PERSONNEL

REFERENCE NO. 27

SHEET      OF     

NOTES BARNHISEL ✓

H.C. " " MC

DATE 4-11-90

ROUTE 65

R.C. Hoffman UB

WEATHER cloudy Sunny

COUNTY Henry

TEMP. +40° +59

TOWNSHIP DAMACUS

SECTION 33

T.S. N R B E

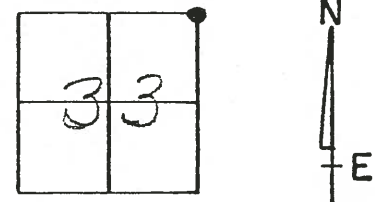
TYPE MONUMENT PK. Shank

ON SURFACE - BELOW YES 2.5"

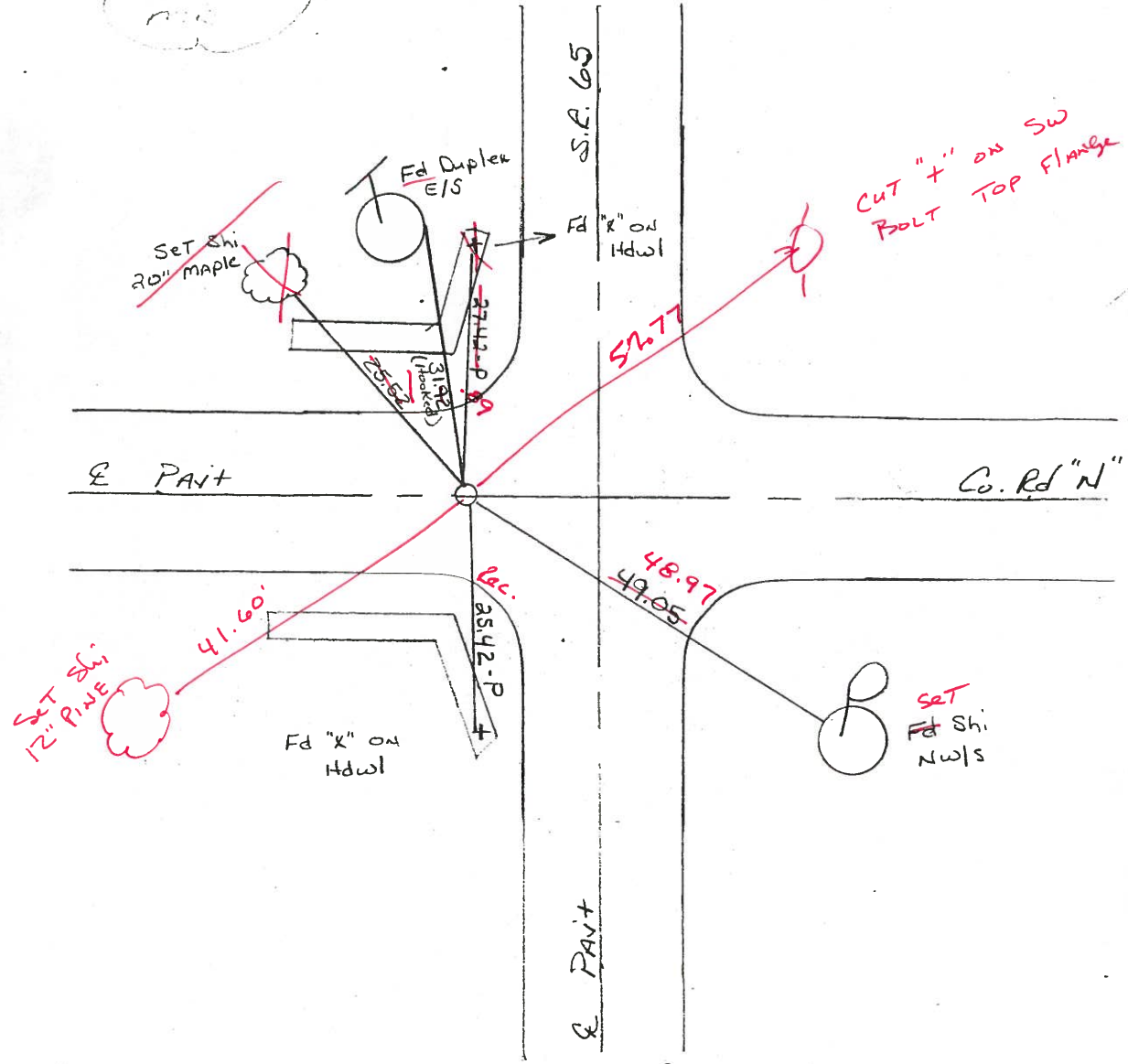
LEFT-   PAV'T. - RIGHT 19.4 ✓

9.2' 10' 11' 12' 13' 14' 15' 16' 17' 18' 19' 20' 21' 22' 23' 24' 25' 26' 27' 28' 29' 30' 31' 32' 33' 34' 35' 36' 37' 38' 39' 40' 41' 42' 43' 44' 45' 46' 47' 48' 49' 50' 51' 52' 53' 54' 55' 56' 57' 58' 59' 60' 9.8 N of S. E.P. of Co Rd "N"

S.L.M. 689+66 683+02 689+55



*Set P.K. & witness  
Date 10  
1990*



ODOT. DISTRICT 2 SURVEY OFFICE

SHEET \_\_\_\_\_ OF \_\_\_\_\_

County HENRY S.R. 65

Date 2-1-84

Township DAMASCUS

Weather Cloudy

Section 33

Temp. +18°

T5N, R8E

Personnel HOFFMAN

28	27
33	34



LOEHKE H.C.

HOUSEHOLDER R.C.

BARNHISEL

# 27

Fd CTR PUNCHED R.R. SPIK @ SURFACE

SLM = 689 + 61

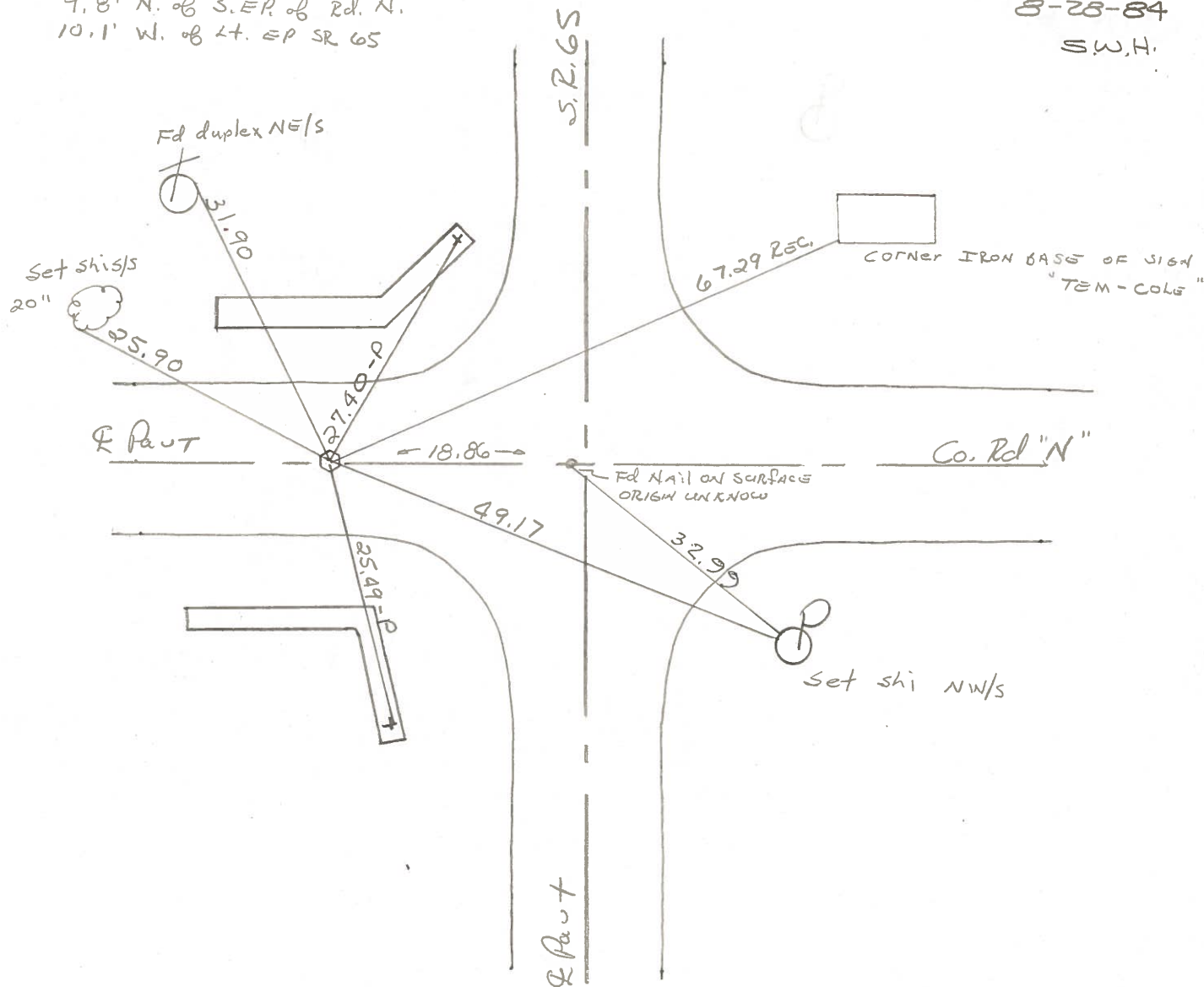
Set BY COUNTY

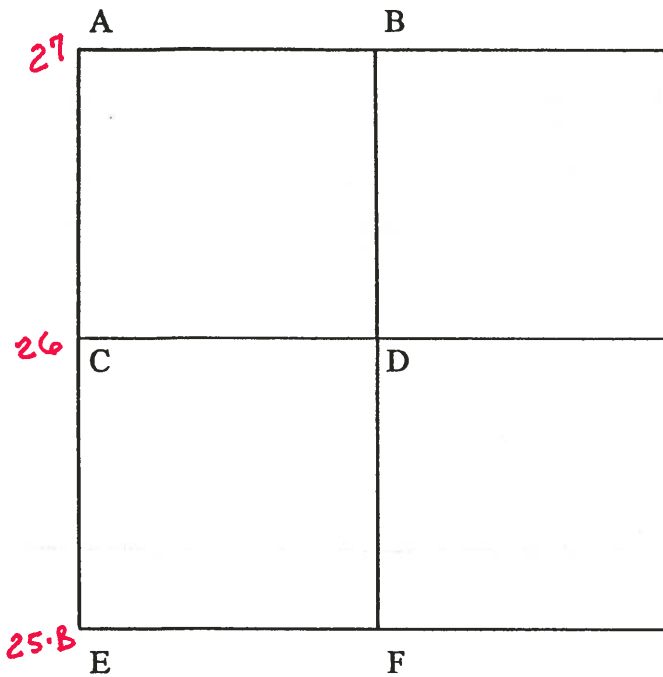
19.4' LT. of & PAUT SR65  
 9.8' N. of S.E.R. of Rd. "N"  
 10.1' W. of Lt. EP SR 65

SET PK/WASHER

8-28-84

S.W.H.





COUNTY: HENRY

TOWNSHIP: DAMASCUS

T- 5 -N R- 8 -E

SECTION: 34

8/7/80 R.W., J.J., C.S.

A - Searched for stone. Did not locate. Re-established corner from recorded witness ties by O.D.O.T. Placed center punched R.R. spike on surface. P.K.'s 6' N&W. Spike is 10.1' west of west edge 18' pavement and 9.8' north of south edge 20' pavement.

31.89' N.W. to duplex NE/S telephone pole

27.37' N.N.E. to "+" N.E. end concrete wall (P)

67.29' N.E. to S.W. corner iron base Tem-cole, Inc. sign

49.26' S.E. to nail and shiner NW/S power pole

7/3/80 R.W., J.J., C.S.

B - Found recorded R.R. spike 19.0' south and 0.80' east of high point of stone (3" x 9" x 12") 17" below road surface. Cornerstone sits on a flat stone. Removed recorded R.R. spike. Placed center punched R.R. spike on surface over high point of stone. P.K.'s 6' S&E. Stone is 2.4' west of west edge 10' pavement and 6.5' south of north edge 12' pavement.

28.25' N.W. to duplex SW/S power pole

29.87' N.N.W. to "+" north end 48" R.C.P. (P)

35.78' N.E. to "+" S.E. corner catch basin

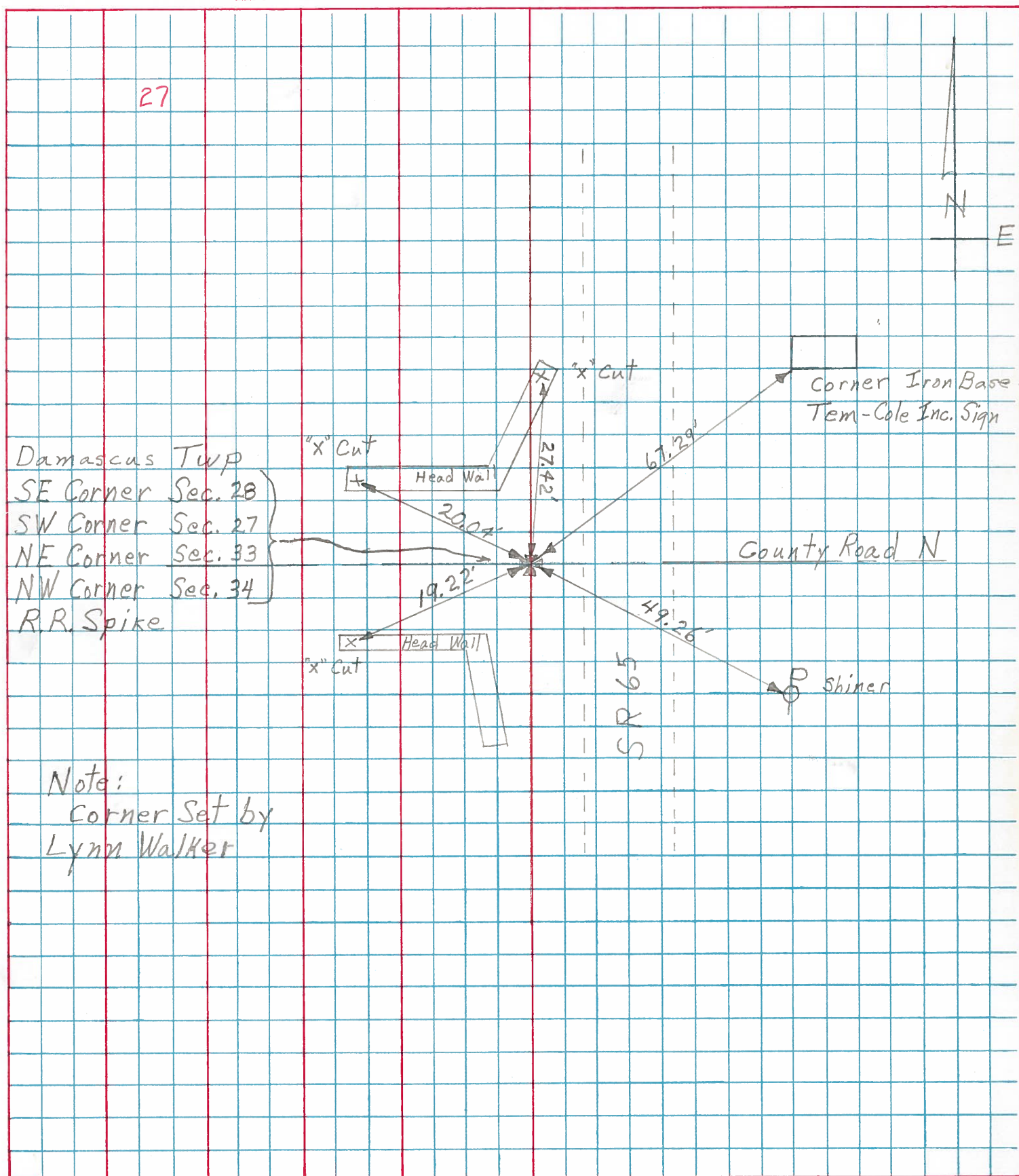
37.47' S.E. to duplex SW/S cable marker post

28.72' S.W. to "+" south end 48" R.C.P. (P)

PERSONNEL	TITLE	PERSONNEL	TITLE
Smith			
Bowers			

COUNTY Henry DATE 8-25-1975  
 S. R. 65 WEATHER Cloudy  
 SEC. 27-28-33-34 TEMP. 84°

DESCRIPTION Witness Ties Damascus Twp JOB NO. \_\_\_\_\_  
 LEFT CENTER LINE RIGHT

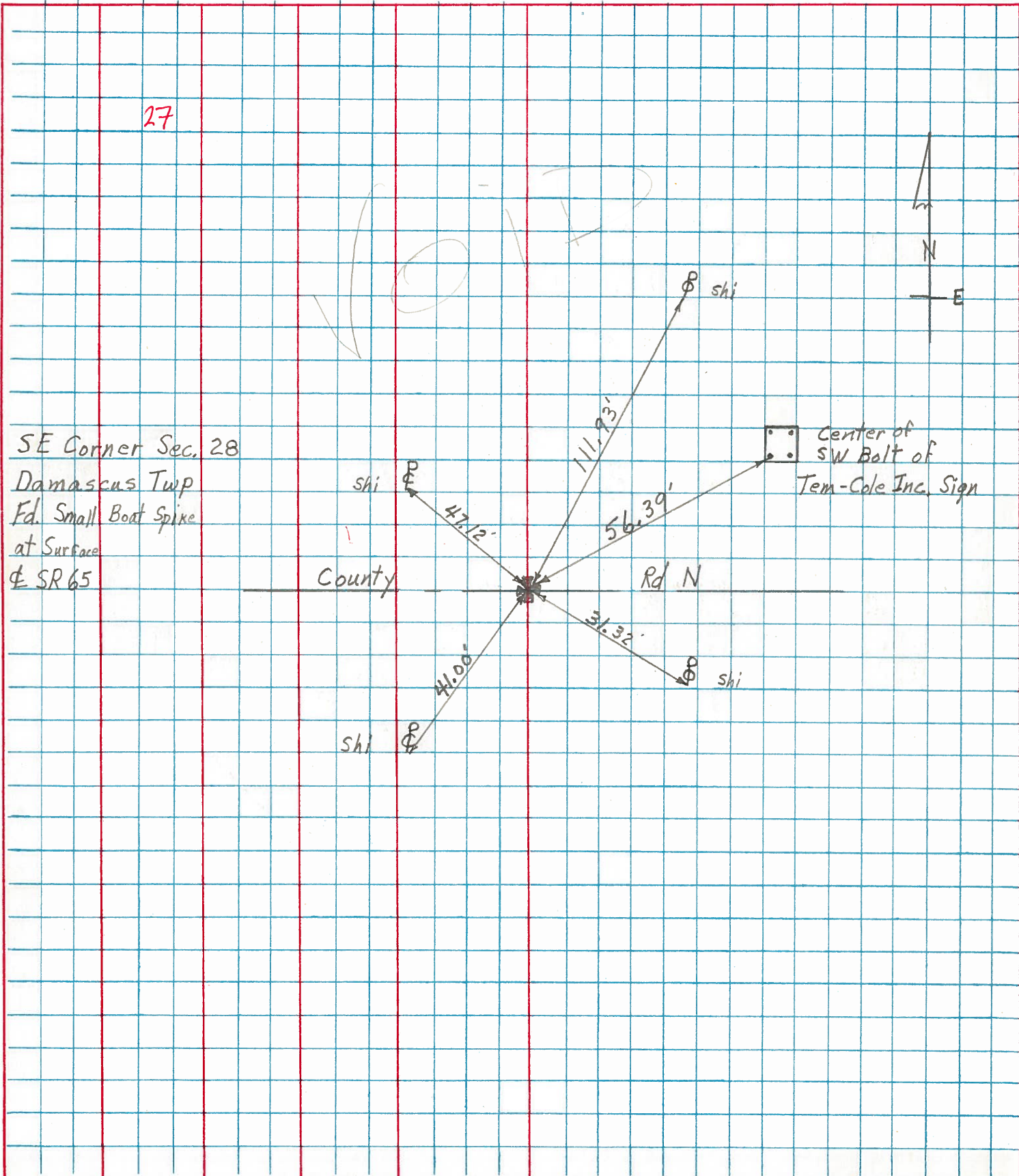


Note:  
 Corner Set by  
 Lynn Walker

SHEET NO. \_\_\_\_\_

PERSONNEL	TITLE	PERSONNEL	TITLE	COUNTY	Henry	DATE	4-16-1974
Smith	_____	_____	_____	S. R.	65	WEATHER	Clear-Mild
Bowers	_____	_____	_____	SEC.	Damascus Twp	TEMP.	50°
Mead	_____	_____	_____				

DESCRIPTION ± Control Ties JOB NO. \_\_\_\_\_



SE Corner Sec. 28  
 Damascus Twp  
 Ed. Small Boat Spike  
 at Surface  
 ± SR 65