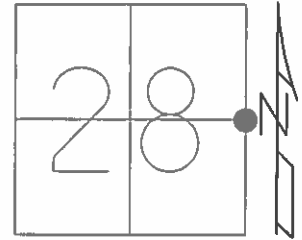


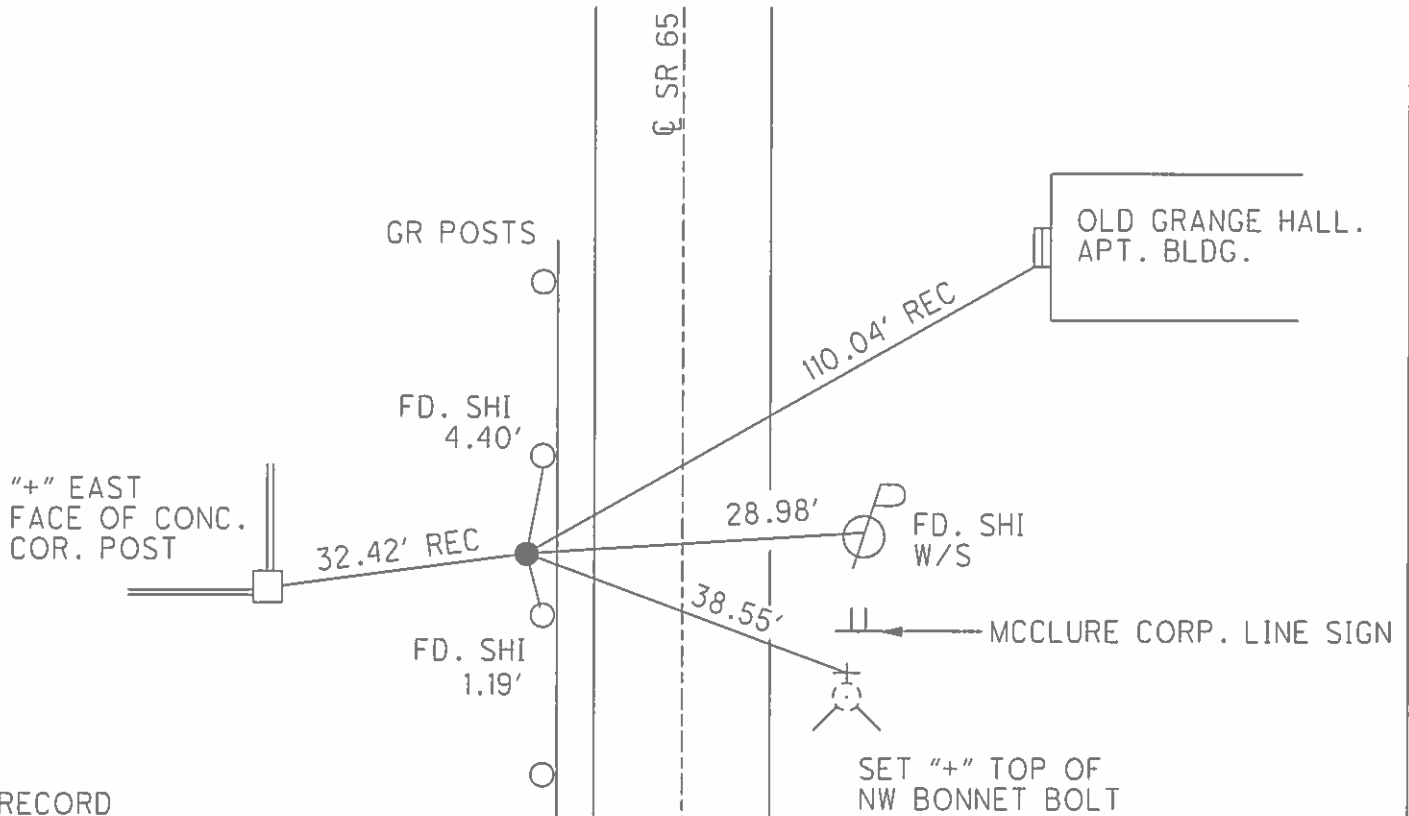
O.D.O.T. DISTRICT 2 SURVEY OFFICE (USE ONLY)

PERSONNEL	REFERENCE NO. <u>28</u>	SHEET <u>33</u> OF <u>42</u>
NOTES <u>HUSS</u>	DATE <u>06-06-12</u>	ROUTE <u>SR 65</u>
H.C. <u>HUSS</u>	WEATHER <u>SUNNY</u>	COUNTY <u>HENRY</u>
R.C. <u>CANTERBURY</u>	TEMP. <u>+68° F</u>	TOWNSHIP <u>DAMASCUS</u>
		SECTION <u>28</u>
		T <u>5</u> N R <u>8</u> E

TYPE MONUMENT IPIPE
 ON SURFACE - ~~BELOW~~ ON
 LEFT - Q PAV'T - ~~RIGHT~~ 13.8'
3.2' LT OF LT EDGE PAVEMENT
 S.L.M. 716+17.51



Grid: Northing: 621699.950 Easting: 1572865.126



RECORD

- 06-22-95 BVD
FD. IRON PIPE AT SURFACE
- 10-01-96 BVD
FD IRON PIPE AT SURFACE
- 09-29-10 JHM
FD. IRON PIPE
- 03-15-13 MC
POINT NOT COVERED
GPS, FIN 28 (IN JOB HEN 65 1352)

O.D.O.T. DISTRICT 2 SURVEY OFFICE

PERSONNEL

REFERENCE NO. 28

SHEET 1 OF 4

NOTES Huss

H.C. VAN DUJEN

DATE 6-22-95

ROUTE S.R. 65

R.C. MOJER

WEATHER SUNNY

COUNTY HENRY

TEMP. +91° F

TOWNSHIP DAMASCUS

SECTION 28

T5 NR 8 E

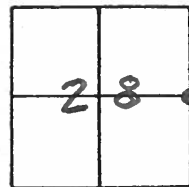
TYPE MONUMENT IRON PIPE

ON SURFACE - BELOW YES

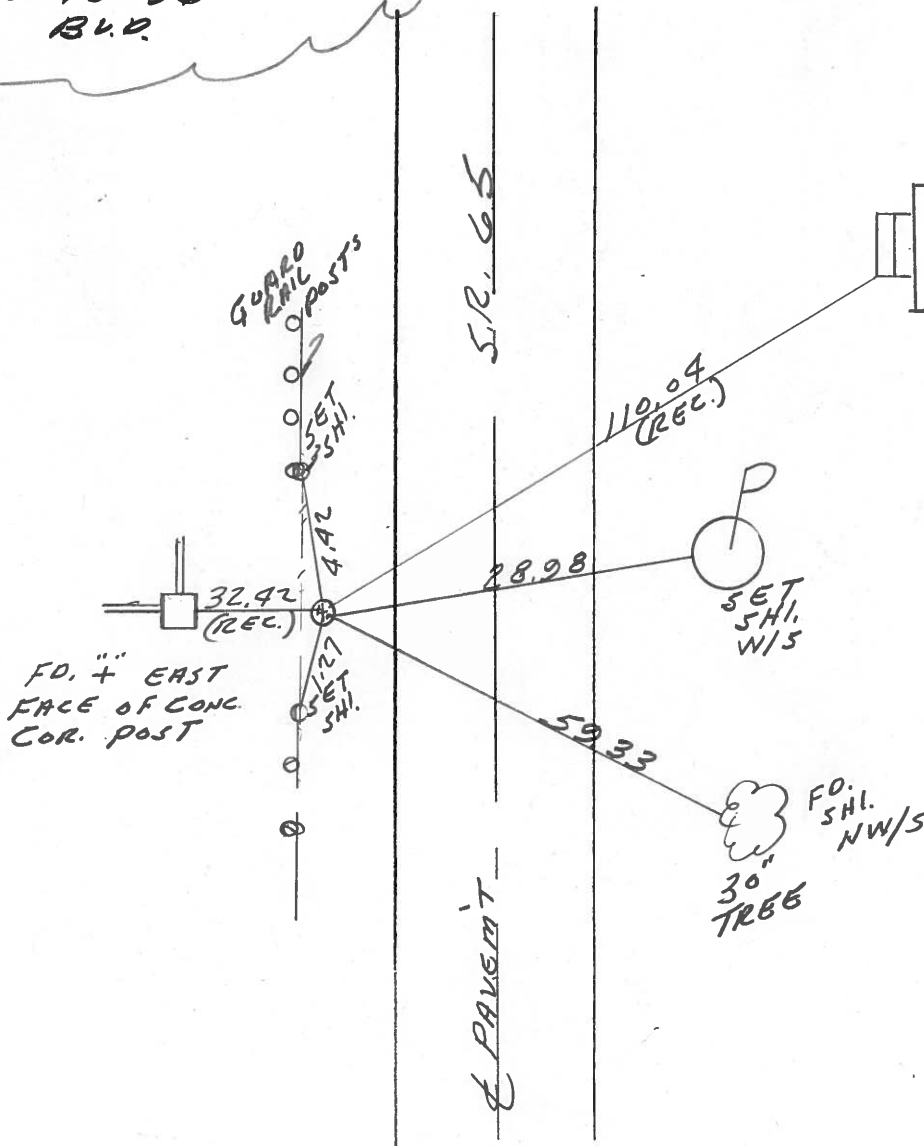
LEFT- & PAV'T. - RIGHT 13.2

TO EDGE PAVEMENT 3.2 LT. OF LT. EP

S.L.M. 716+21



FD. IRON PIPE @ SURFACE
10-10-96
B.V.D.



FD. 4" EAST
FACE OF CONC.
COR. POST

GUARD
RAIL
POSTS

SET
5HI.

SET
5HI.

SET
5HI.

P
SET
5HI.
W/S

FD.
5HI.
NW/S
30"
TREE

Resurfaced 1996

ODOT DISTRICT 2 SURVEY OFFICE

SHEET _____ OF _____

County HENRY S.R. 65

Date 2-1-84

Township DAMASCUS

Weather Cloudy

Section 28

Temp. 18°

TSN, R0E

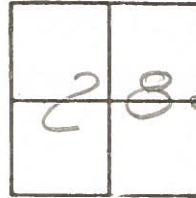
Personnel HOFFMAN

LOEHRKE H.C.

HOUSEHOLDER R.C.

BARNHISEL

28

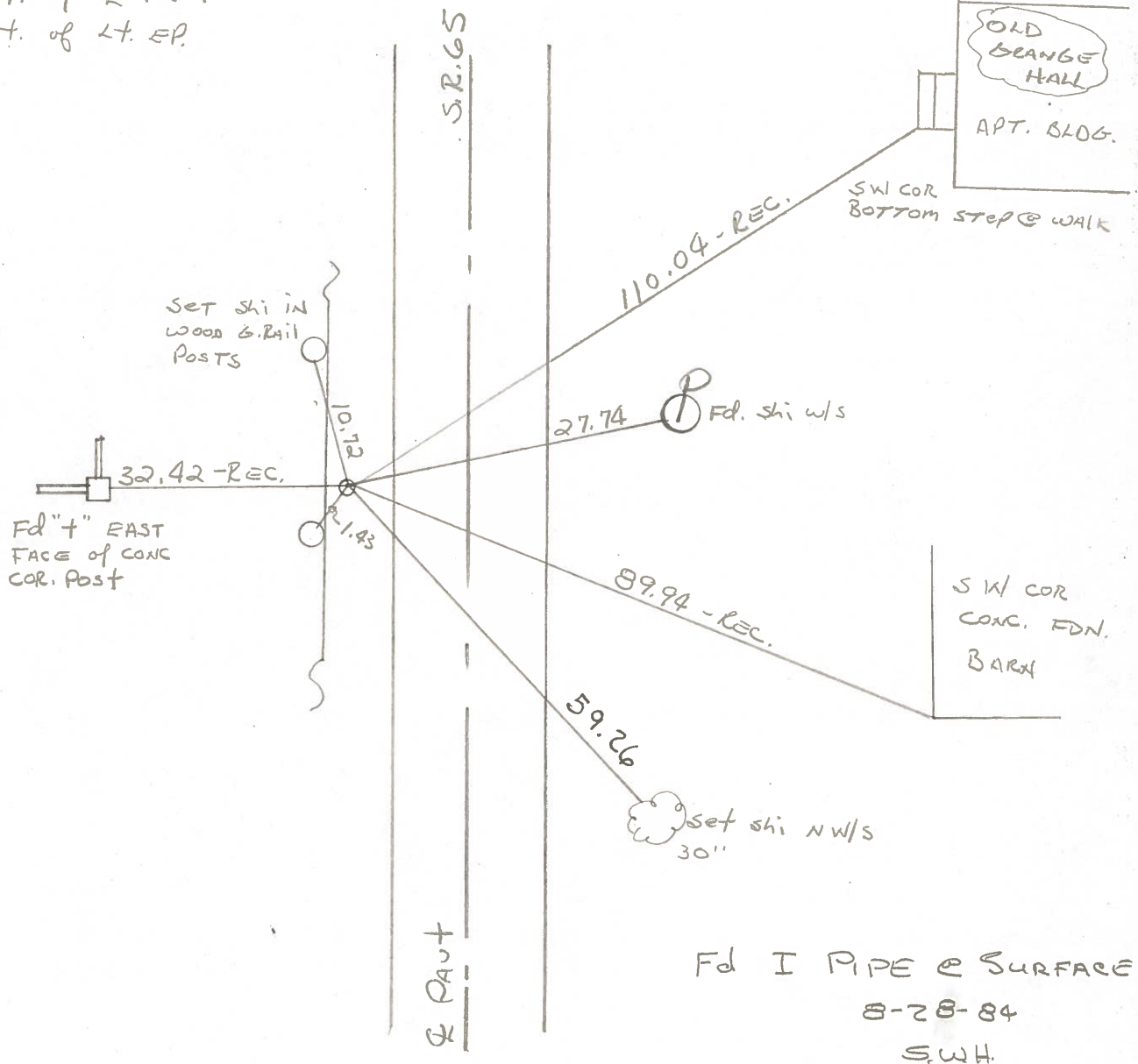


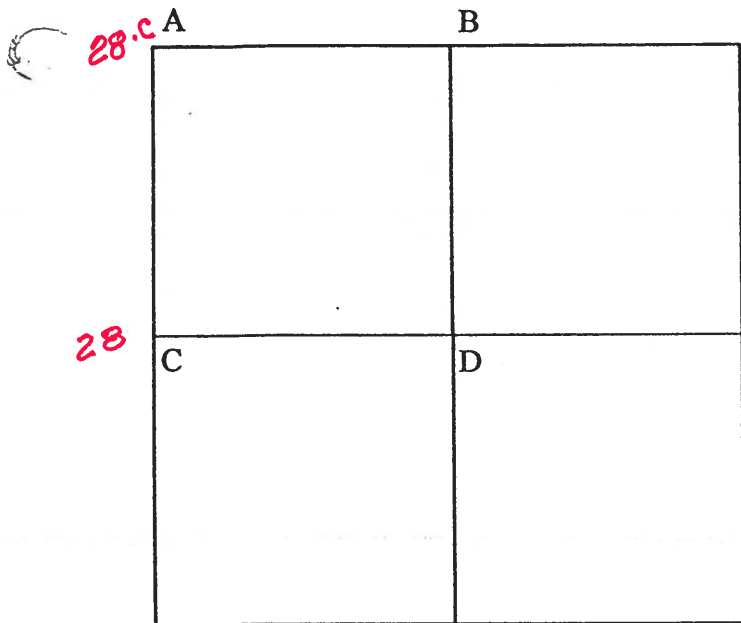
Fd. IRON PIPE, 3/4" O.D. 2" below surface

SLM 716 + 21

13.2' Lt. of Q Pavt

3.1' Lt. of Lt. EP.





COUNTY: HENRY

TOWNSHIP: DAMASCUS

T- 5 -N R- 8 -E

SECTION: 27

R.W., J.J., C.S.

- A -
28.C
Found brass monument in center of pavement.
40.47' N.W. to "+" face concrete island guard.
46.15' N.E. to nail and shiner SW/S centerline
41.64' S.E. to nail and shiner NW/S telephone pole
38.52' S.E. to "+" top concrete curb
47.57' S.W. to nail and shiner NE/S power pole
45.78' S.W. to "+" top concrete curb

J.J., C.S.

- B -
Found brass monument in center of pavement.
100.30' N.W. to nail and shiner SE/S power pole
35.28' N.E. to nail and shiner SW/S telephone pole
57.39' S.E. to ctr. brass plate R/W monument.
46.00' S.S.E. to nail and shiner NE/S power pole
34.66' S.E. to nail and shiner NE/S/power pole

R.W., C.S.

- 28 C - Found 3/4" iron pipe from state references, noted as being over stone. Iron pipe is 2.5' west of west edge pavement.
32.42' W. to "+" face concrete fence post
27.65' E.N.E. to nail & shiner W/S power pole
90.08' S.E. to S.W. corner conc. barn foundation

PERSONNEL	TITLE	PERSONNEL	TITLE
BURNSIDE			
SMITH			
BOWERS			
MEAD			

COUNTY HENRY DATE 7-15-75
 S. R. 65 WEATHER CLEAR
 SEC. E 1/4 Post Sec. 28 TEMP. +77°

DESCRIPTION REF. TO SECTION CORNER JOB NO. _____
 LEFT CENTER LINE RIGHT

