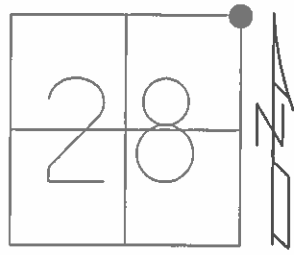


O.D.O.T. DISTRICT 2 SURVEY OFFICE (USE ONLY)

PERSONNEL	REFERENCE NO. <u>28 C</u>	SHEET <u>36</u> OF <u>42</u>
NOTES <u>HUSS</u>	DATE <u>06-06-12</u>	ROUTE <u>SR 65</u>
H.C. <u>HUSS</u>	WEATHER <u>SUNNY</u>	COUNTY <u>HENRY</u>
R.C. <u>CANTERBURY</u>	TEMP. <u>+74° F</u>	TOWNSHIP <u>DAMASCUS</u>
		SECTION <u>28</u>
		T <u>5</u> N R <u>8</u> E

TYPE MONUMENT MAG NAIL & WASHER  
 ON SURFACE - ~~BELOW~~ ON \_\_\_\_\_  
~~LEFT~~ - Q PAV'T - ~~RIGHT~~ 2.6'  
 \_\_\_\_\_ TO \_\_\_\_\_ EDGE PAVEMENT  
 S.L.M. 742+69.17

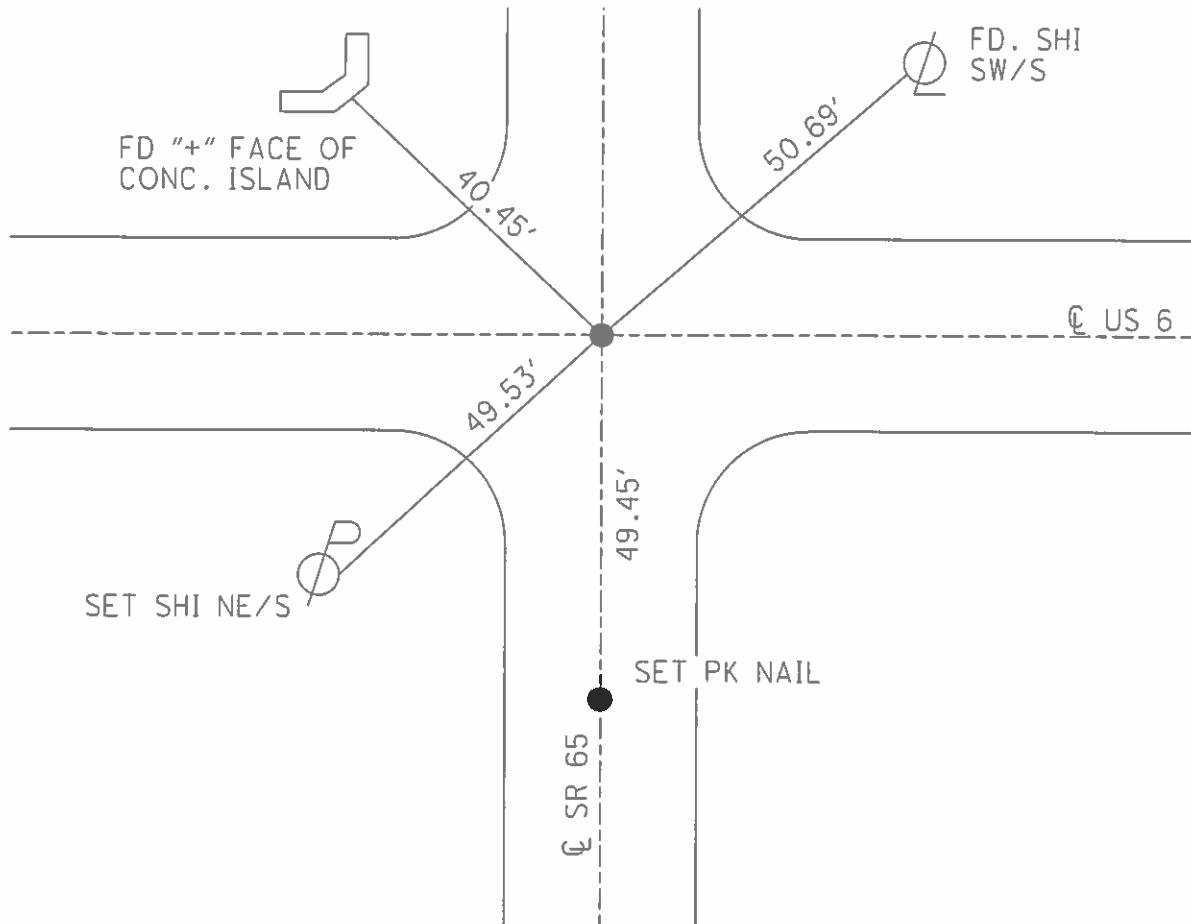


Grid: Northing: 624351.412 Easting: 1572900.522

RECORD

02-19-52 FD. IRON PIN	05-10-72 FD. BRASS MON.	06-20-88 SWH SET SM. RRSPK	04-21-03 DCH SET MAG/W
06-09-54 FD. IRON PIN	02-01-84 SWH FD. BRASS MON. W/"+" ON TOP	10-10-96 BVD FD. SM. RR SPIKE AT SURFACE.	09-29-10 JHM FD. MAG/W
08-20-54 SET MOBARA (BRASS) MON.	04-08-88 SWH FD. RRSPK	07-18-02 DCH FD. SM. RRSPK	03-15-13 MC POINT NOT COVERED GPS, FIN C28 (IN JOB HEN 65 1352)

NOTE: REF #54 ON SR 6



O.D.O.T. DISTRICT 2 SURVEY OFFICE

PERSONNEL

REFERENCE NO. 54

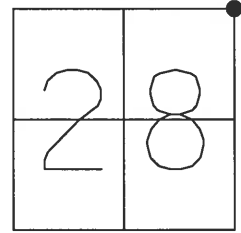
SHEET 11 OF 17

NOTES HOMAN  
 H.C. ROUSOS  
 R.C. BEAUMONT  
CHLEBECK

DATE 7-18-02  
 WEATHER SUNNY  
 TEMP. 90°

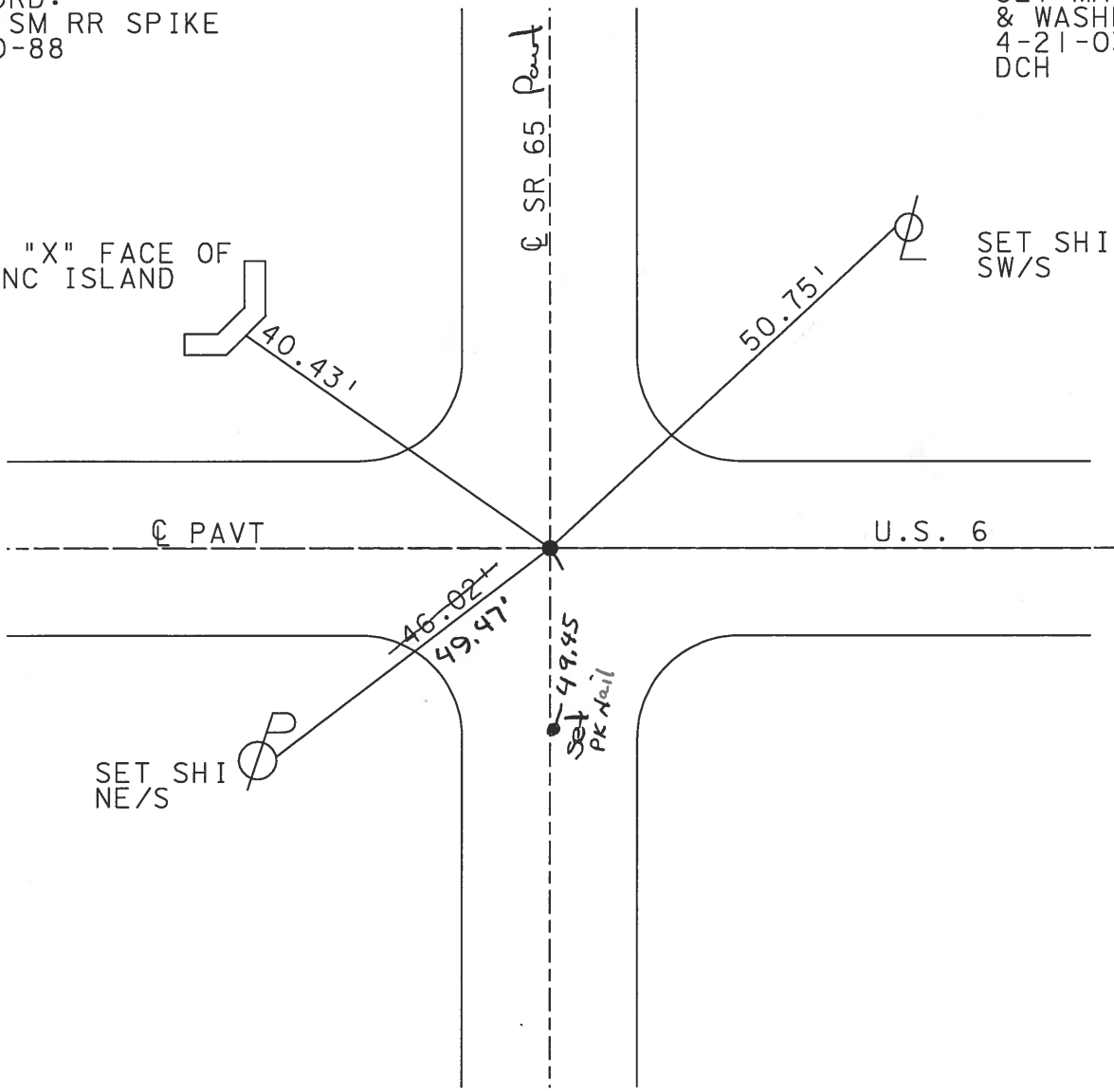
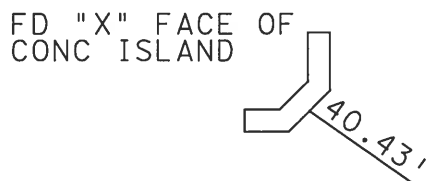
ROUTE US 6  
 COUNTY HENRY  
 TOWNSHIP DAMASCUS  
 SECTION 28  
T 5 N R 8 E

TYPE MONUMENT SM RR SPIKE  
 ON SURFACE - ~~BELOW~~ YES  
~~LEFT~~ - Q PAVT - ~~RIGHT~~ YES  
TO EDGE PAVEMENT  
 S.L.M. 1317+71  
SLM = 24.96 = 1317 + 88.8



RECORD:  
 SET SM RR SPIKE  
 6-20-88  
 SWH

SET MAG NAIL  
 & WASHER  
 4-21-03  
 DCH



O.D.O.T. DISTRICT 2 SURVEY OFFICE

PERSONNEL

REFERENCE NO. 28-C  
# 54 U.S. 6

SHEET 4 OF 4

NOTES STEVE HUSS

H.C. BOB VAUDUSEN

DATE 6-22-95

ROUTE 65

R.C. KEVIN MOSER

WEATHER CLEAR

COUNTY HENRY

TEMP. +91°F

TOWNSHIP DAMASCUS

SECTION 28

T S N R B E

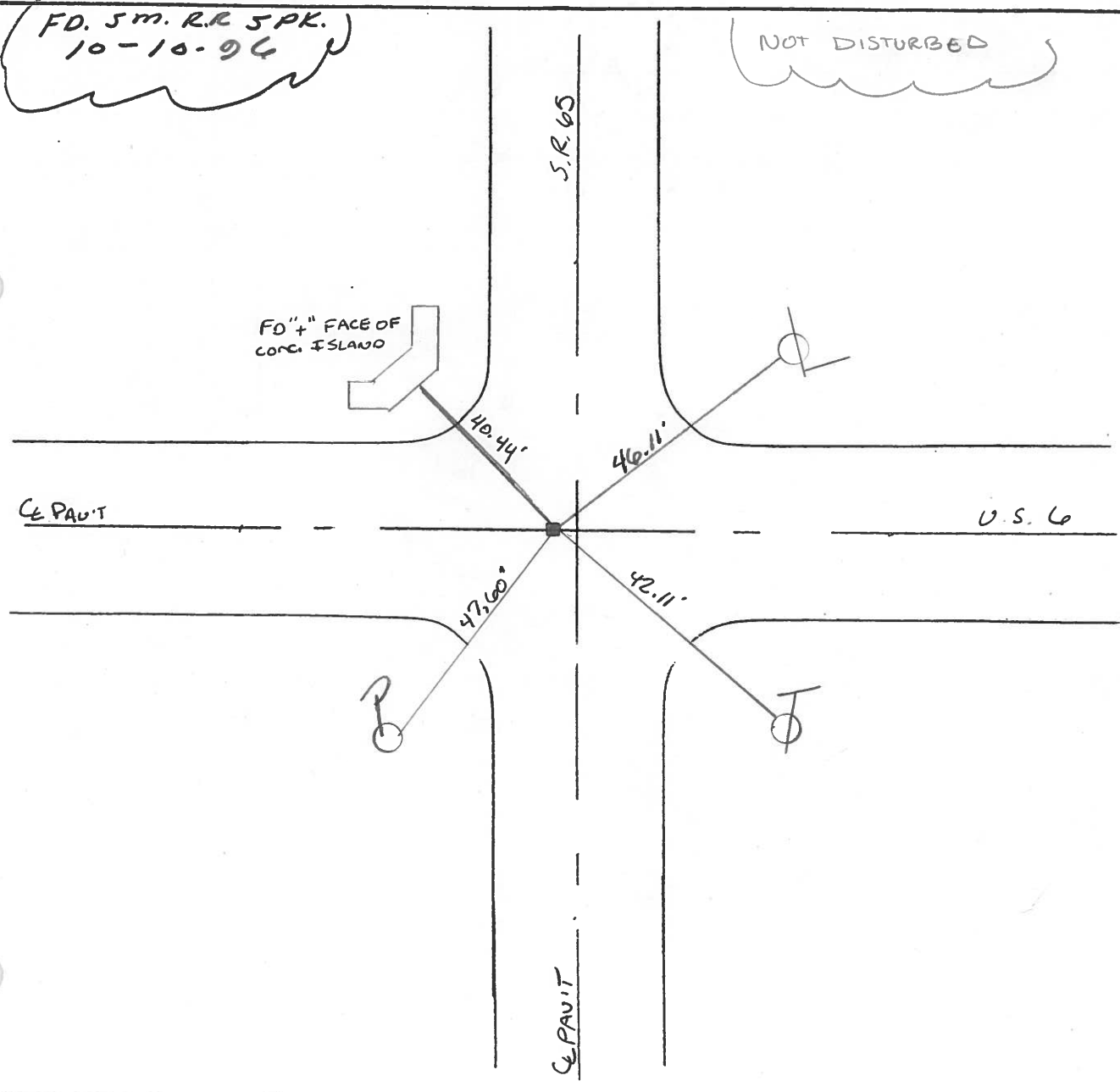
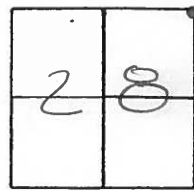
TYPE MONUMENT BRASS PLATE

ON SURFACE - BELOW YES

LEFT - C PAV'T. - RIGHT 2.6' LT S.R. 65 N

TO EDGE PAVEMENT

S.L.M. 742+83 S.R. 65



Q.D.O.T. DISTRICT 2 SURVEY OFFICE

SHEET \_\_\_\_\_ OF \_\_\_\_\_

County HENRY S.R. 65

Date 2-1-84

Township DAMASCUS

Weather Cloudy

Section 28

Temp. 18°

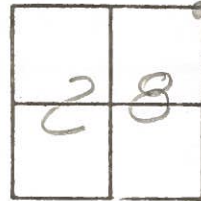
T5N, R0E

Personnel HOFFMAN

#54 on U.S. 6 LOERKE H.C.

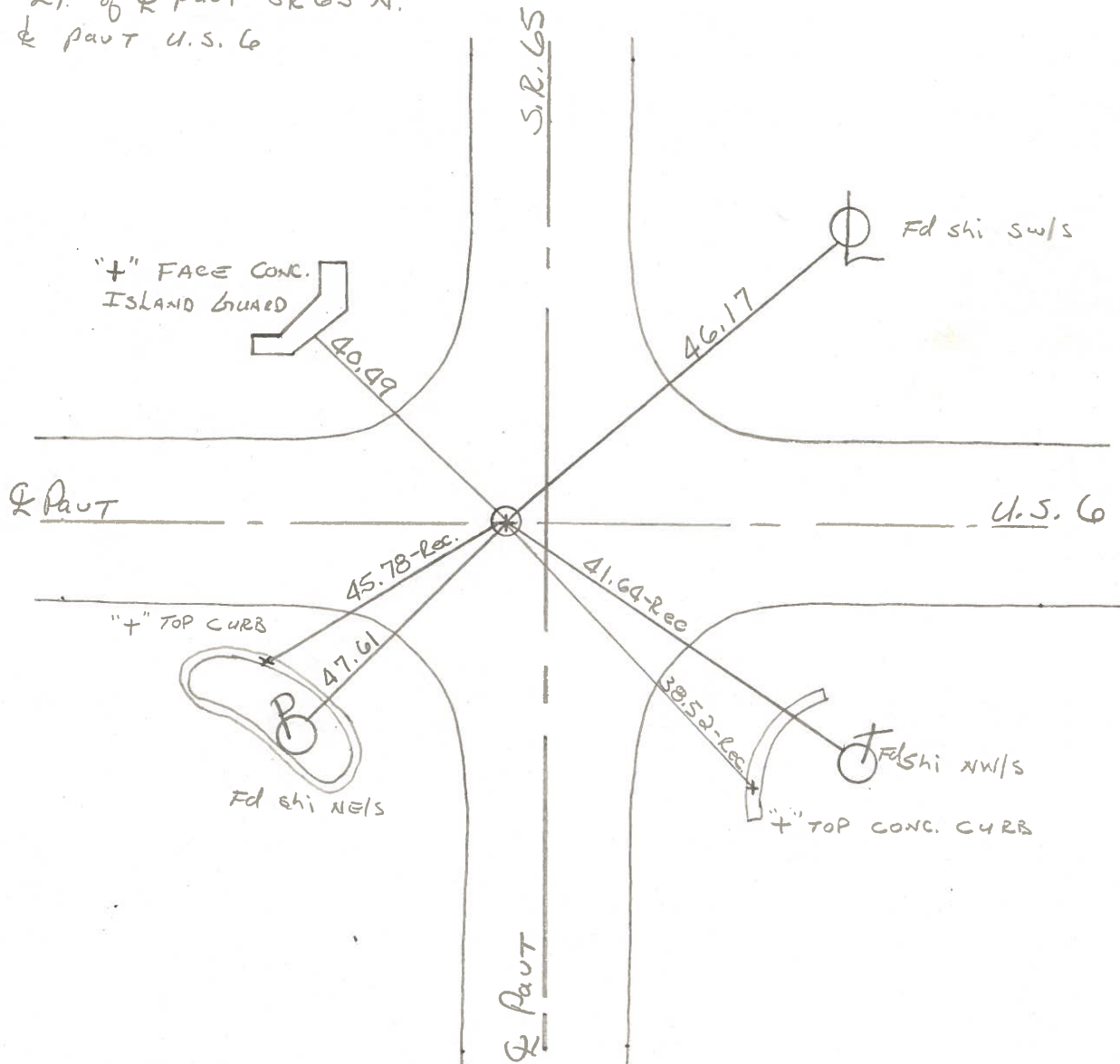
28C on SR 65 HOUSEHOLDER R.C.

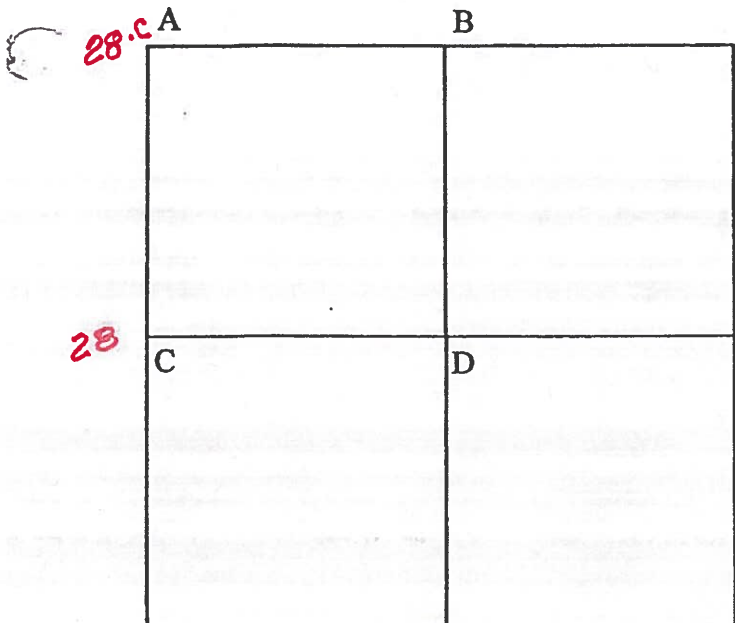
BARNHISEL



Fd BRASS PLATE 1" Below surface  
Ref. to "+" ON TOP

2.0' Lt. of & part SR 65 N.  
on & part U.S. 6





COUNTY: HENRY

TOWNSHIP: DAMASCUS

T- 5 -N R- 8 -E

SECTION: 27

R.W., J.J., C.S.

- A - **28.c**  
 Found brass monument in center of pavement.  
 40.47' N.W. to "+" face concrete island guard.  
 46.15' N.E. to nail and shiner SW/S centerline  
 41.64' S.E. to nail and shiner NW/S telephone pole  
 38.52' S.E. to "+" top concrete curb  
 47.57' S.W. to nail and shiner NE/S power pole  
 45.78' S.W. to "+" top concrete curb

J.J., C.S.

- B - Found brass monument in center of pavement.  
 100.30' N.W. to nail and shiner SE/S power pole  
 35.28' N.E. to nail and shiner SW/S telephone pole  
 57.39' S.E. to ctr. brass plate R/W monument.  
 46.00' S.S.E. to nail and shiner NE/S power pole  
 34.66' S.E. to nail and shiner NE/S/power pole

R.W., C.S.

- 28** C - Found 3/4" iron pipe from state references, noted as being over stone. Iron pipe is 2.5' west of west edge pavement.  
 32.42' W. to "+" face concrete fence post  
 27.65' E.N.E. to nail & shiner W/S power pole  
 90.08' S.E. to S.W. corner conc. barn foundation